



CYBONET

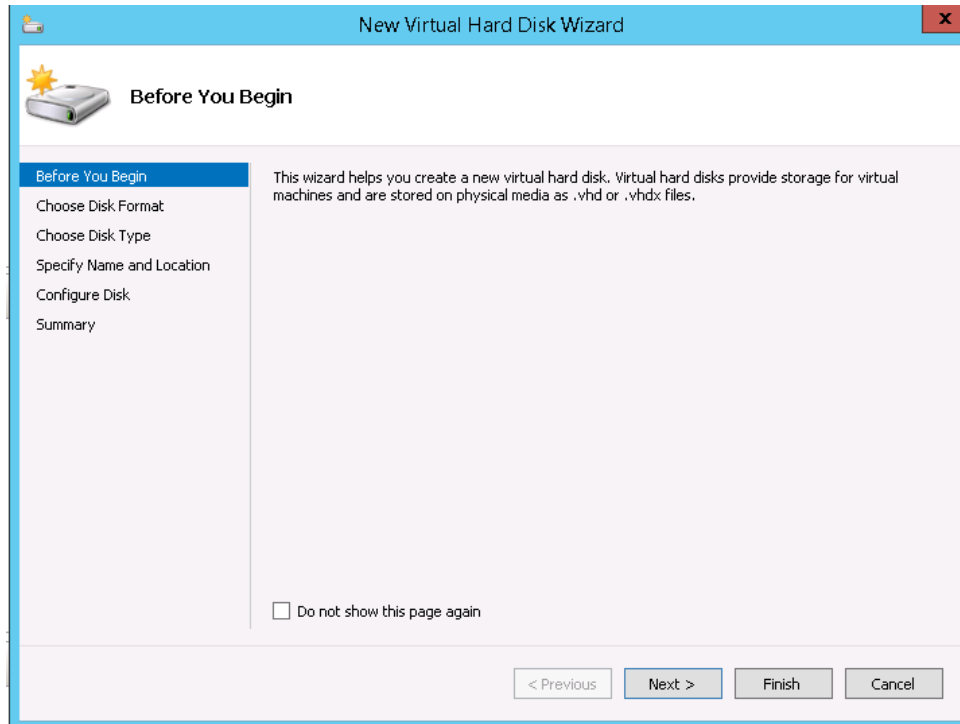


Hyper V

Quick Installation Guide

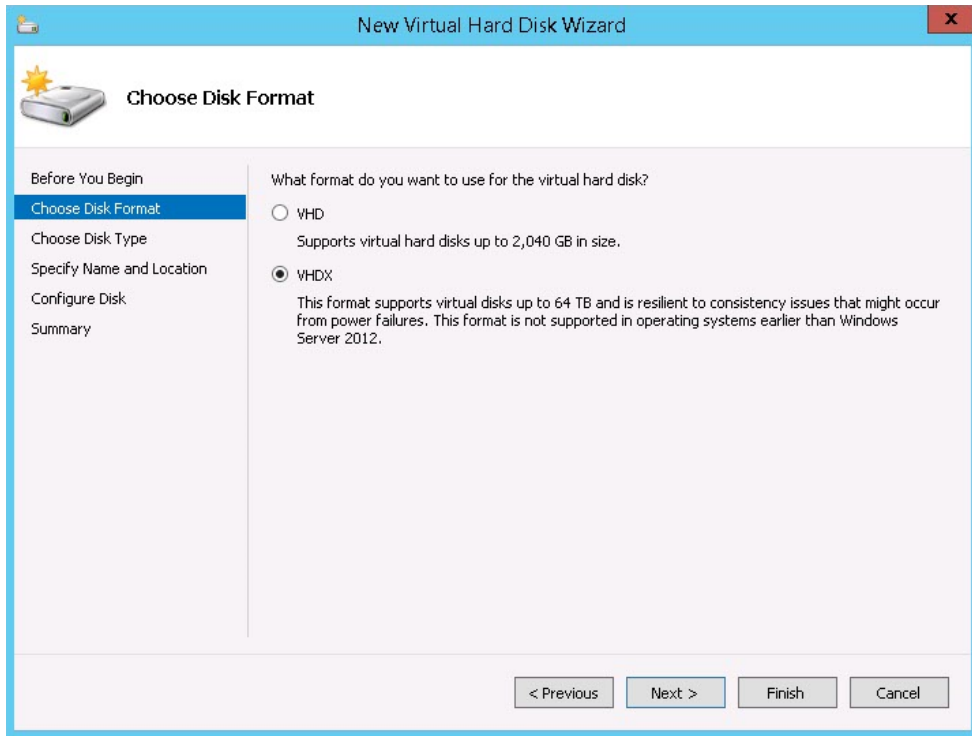
Step 1: Installing PineApp Mail Secure over virtual machine.

1. Please choose **New Virtual Hard Wizard** and click on **Next >** button.





2. Under **Choose Disk Format** menu, please select **VHDX** option as mentioned below and click Next.





- Under **Choose Disk Type**, please select **Fixed Size** and continue wizard.

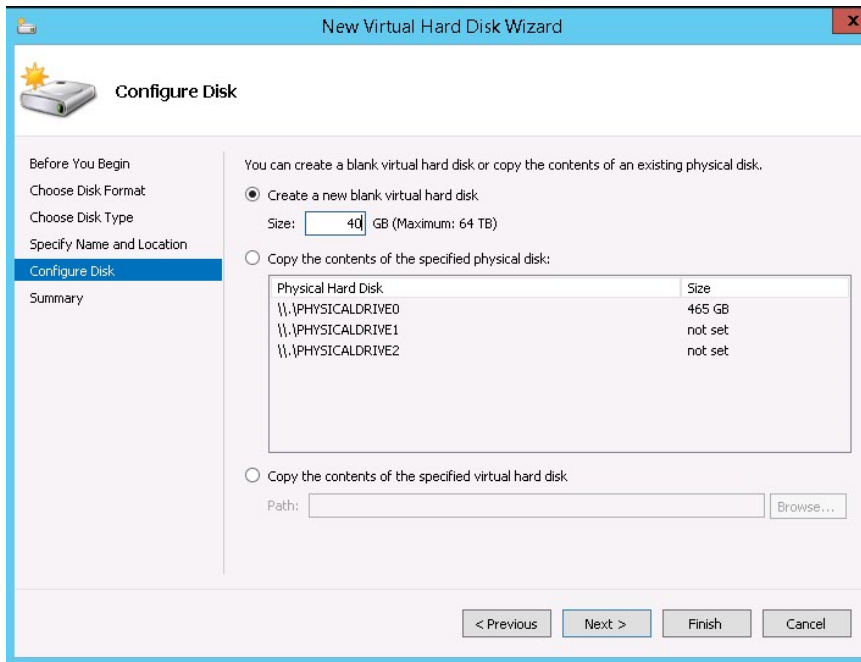
The screenshot shows the 'New Virtual Hard Disk Wizard' dialog box. The title bar reads 'New Virtual Hard Disk Wizard'. The main window has a blue header with a sun icon and the text 'Choose Disk Type'. On the left, a vertical navigation pane lists the steps: 'Before You Begin', 'Choose Disk Format', 'Choose Disk Type' (highlighted), 'Specify Name and Location', 'Configure Disk', and 'Summary'. The main area contains the question 'What type of virtual hard disk do you want to create?' with three radio button options: 'Fixed size' (selected), 'Dynamically expanding', and 'Differencing'. Each option has a descriptive paragraph. At the bottom, there are four buttons: '< Previous', 'Next >', 'Finish', and 'Cancel'.

- Under **Specify Name and Location**, assign name for virtual disk and specify location.

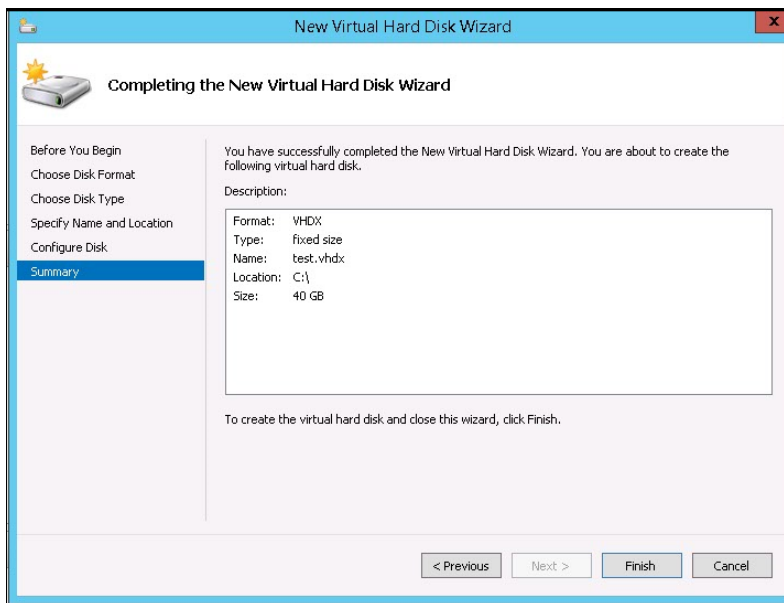
The screenshot shows the 'New Virtual Hard Disk Wizard' dialog box. The title bar reads 'New Virtual Hard Disk Wizard'. The main window has a blue header with a sun icon and the text 'Specify Name and Location'. On the left, a vertical navigation pane lists the steps: 'Before You Begin', 'Choose Disk Format', 'Choose Disk Type', 'Specify Name and Location' (highlighted), 'Configure Disk', and 'Summary'. The main area contains the instruction 'Specify the name and location of the virtual hard disk file.' with two input fields: 'Name:' containing 'New Virtual Hard Disk.vhdx' and 'Location:' containing 'C:\'. A 'Browse...' button is next to the location field. At the bottom, there are four buttons: '< Previous', 'Next >', 'Finish', and 'Cancel'.



- Under **Configure Disk**, please specify disk size. For standalone unit is **300GB**, for scanner unit in cluster enough – **120GB** and click on **Next >** button.

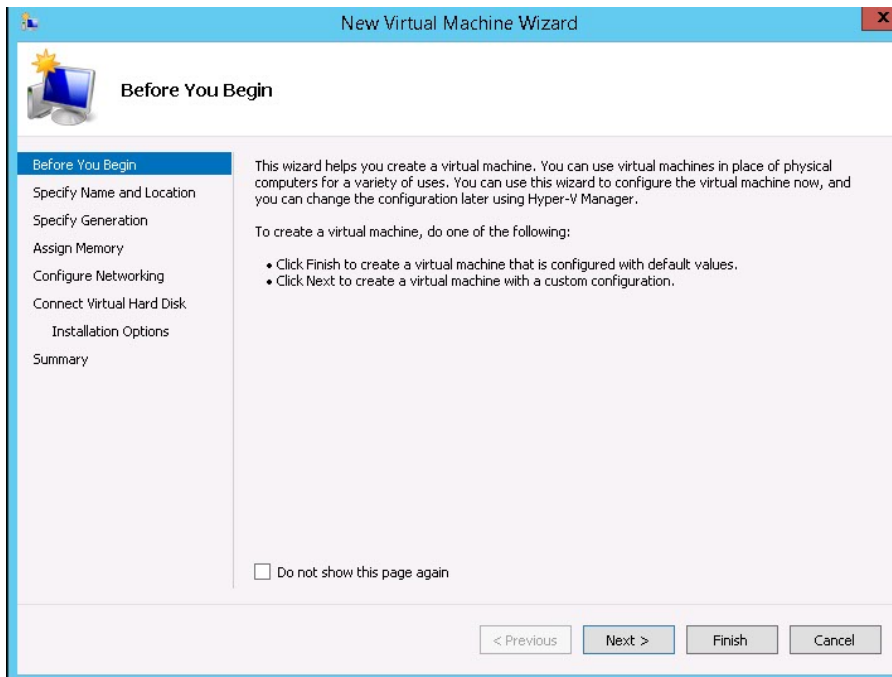


- Under **Summary** window, please verify your virtual machine description and click on **Finish**.

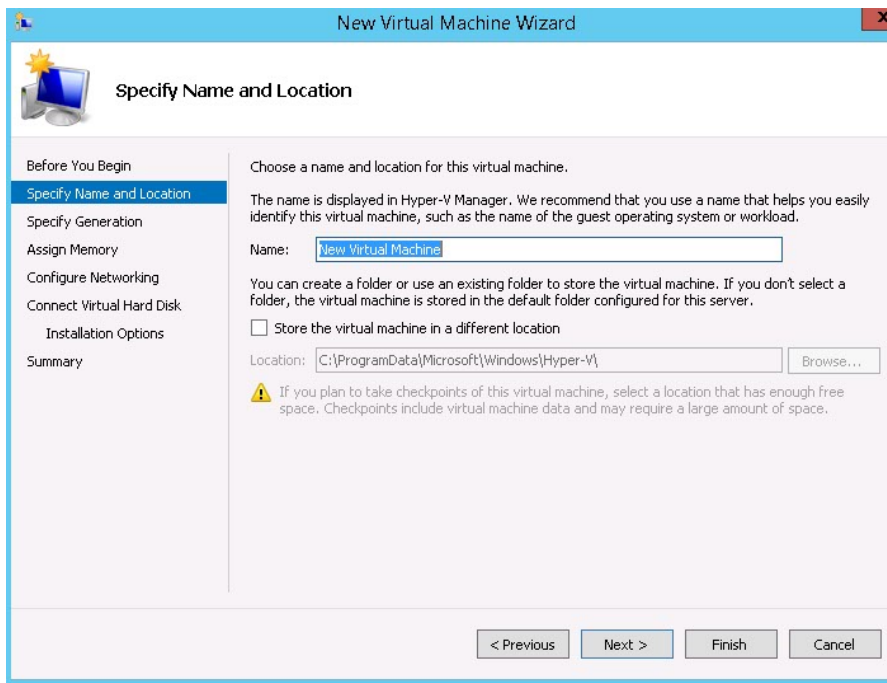




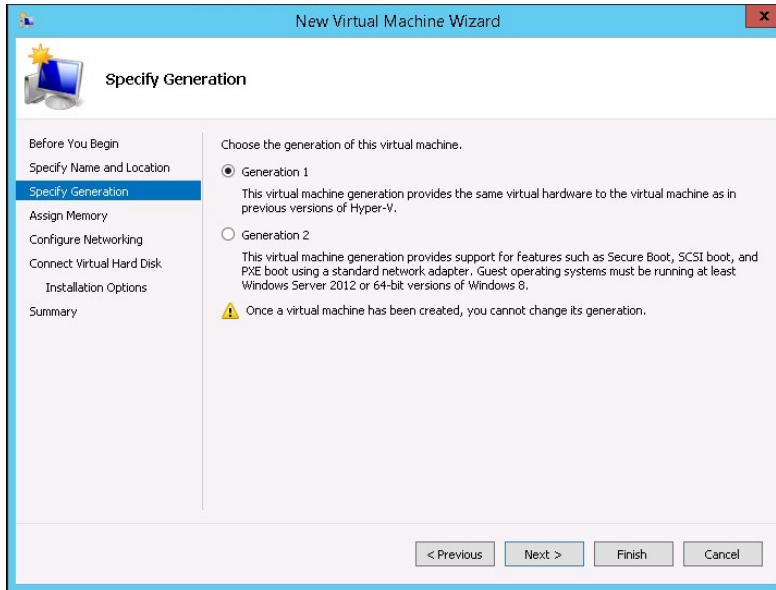
7. Continue with wizard, by clicking **Next** button.



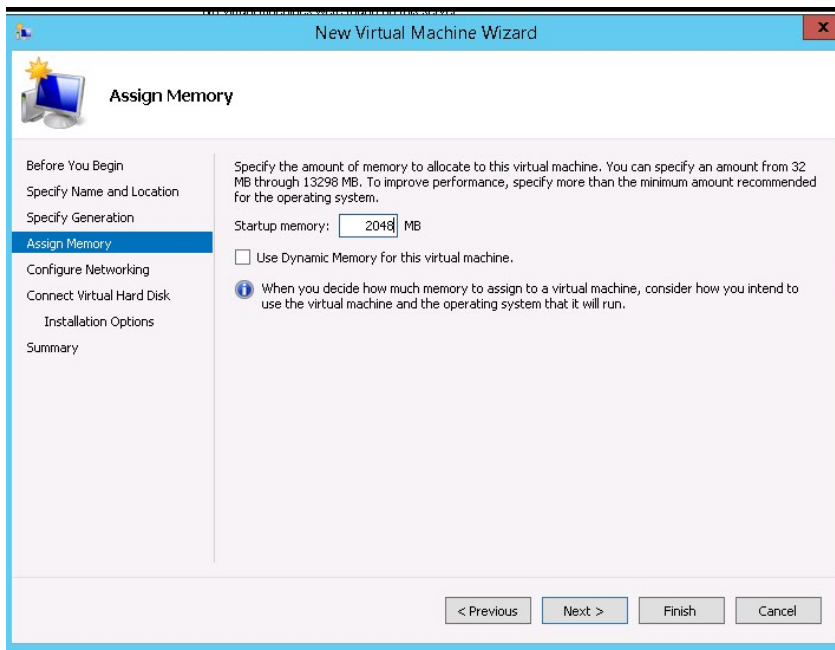
8. Under **Specify Name and Location** menu, assign name for PineApp Mail Secure installation (for example – **PineApp**) and click on **Next** button.



- Under **Generation** menu, please specify **Generation 1** as mentioned on a screenshot below and click **Next >**.

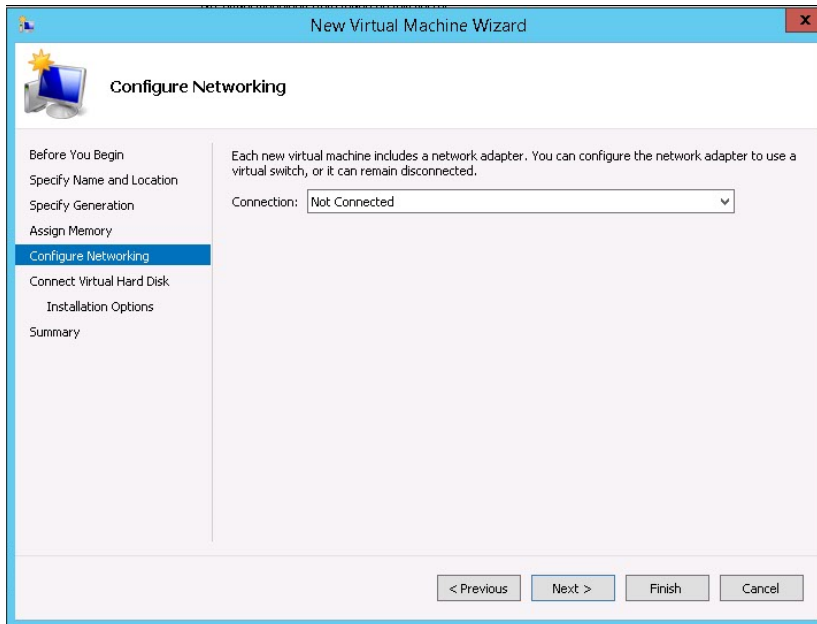


- Under Memory menu, assign RAM size. Minimum recommended value is – **4GB RAM (4096MB)**

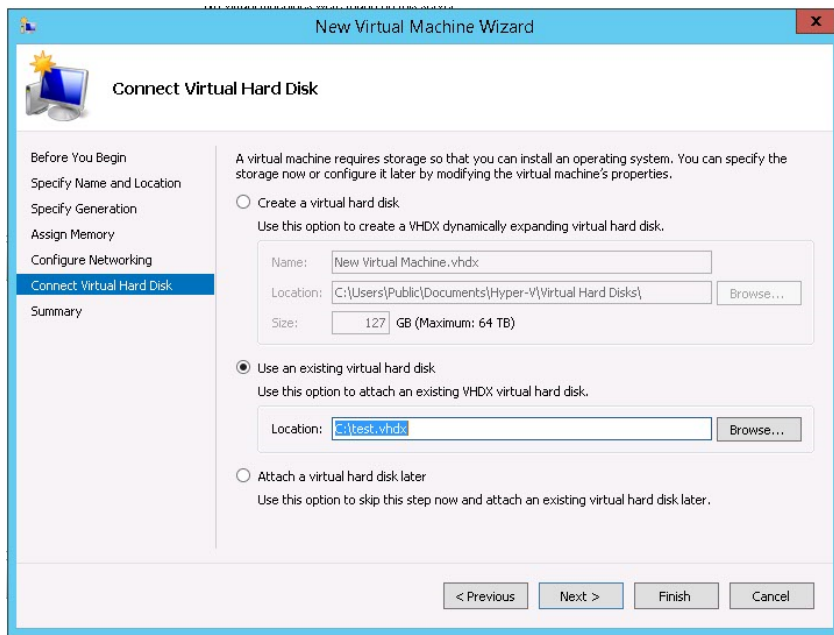




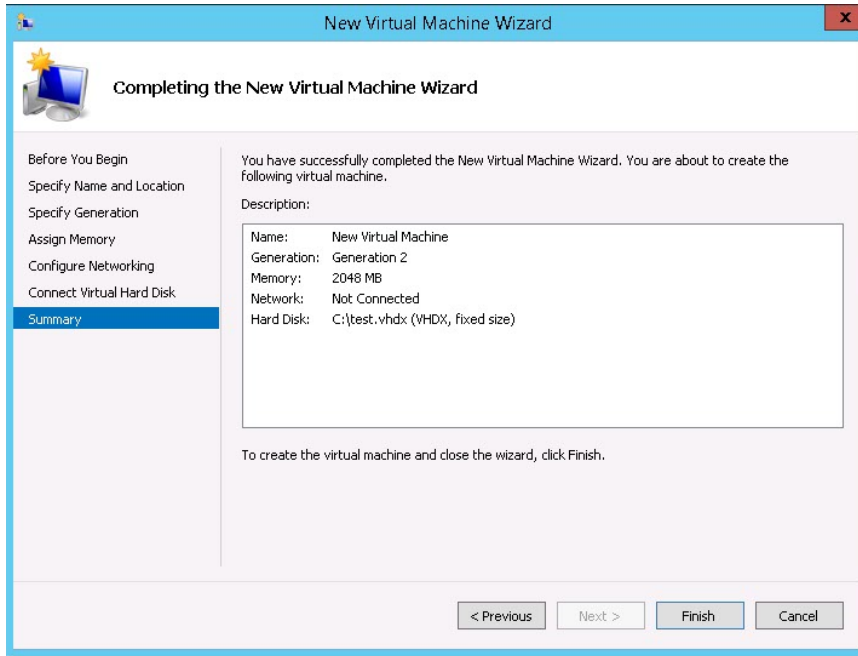
11. Under **Networking** menu, please choose network connection.



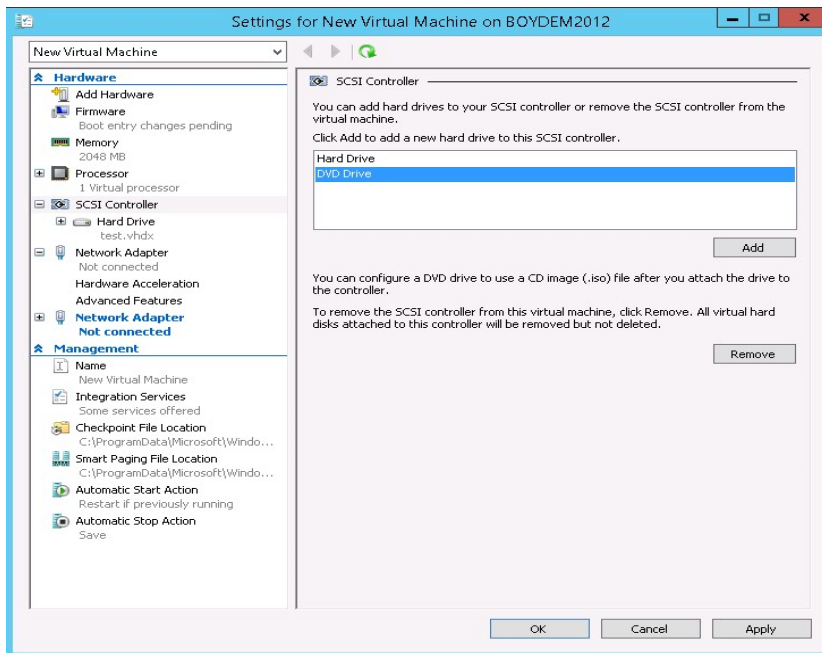
12. Under **Virtual Hard Disk** menu, please connect previously created virtual disk from instruction number 4 and click on **Next**.



- Under Summary menu, please verify that virtual machine settings are to your expectations and click on **Finish** button.

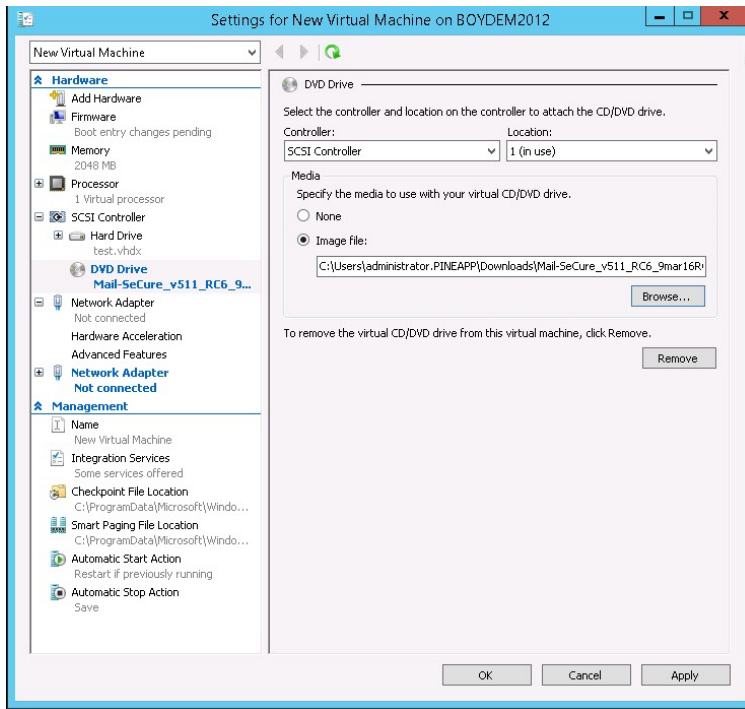


- Enter **Settings** of newly created machine, choose **SCSI Controller** and select **DVD Drive** and click on **Add** button.

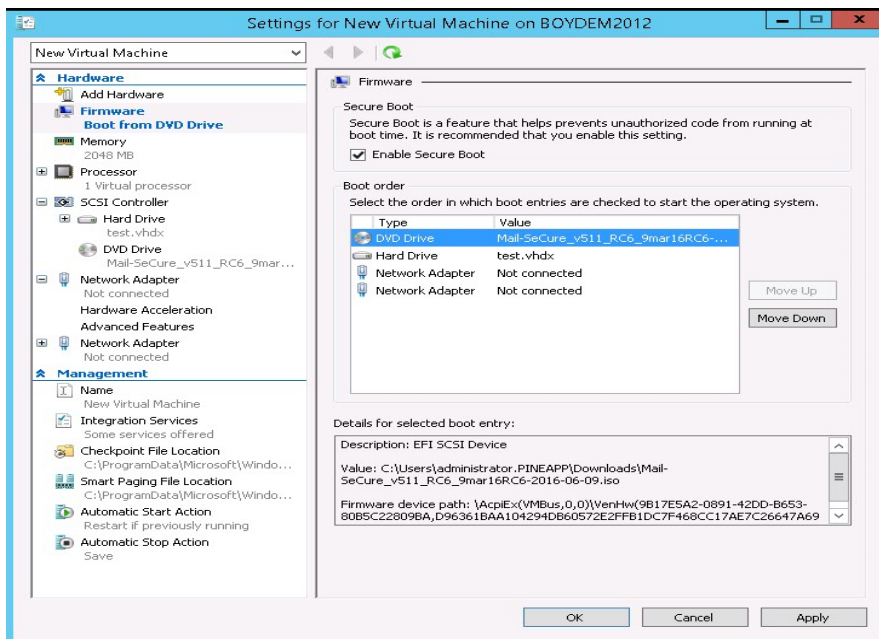




15. In a new window please select the previously downloaded CYBONET image as seen on this screenshot below.

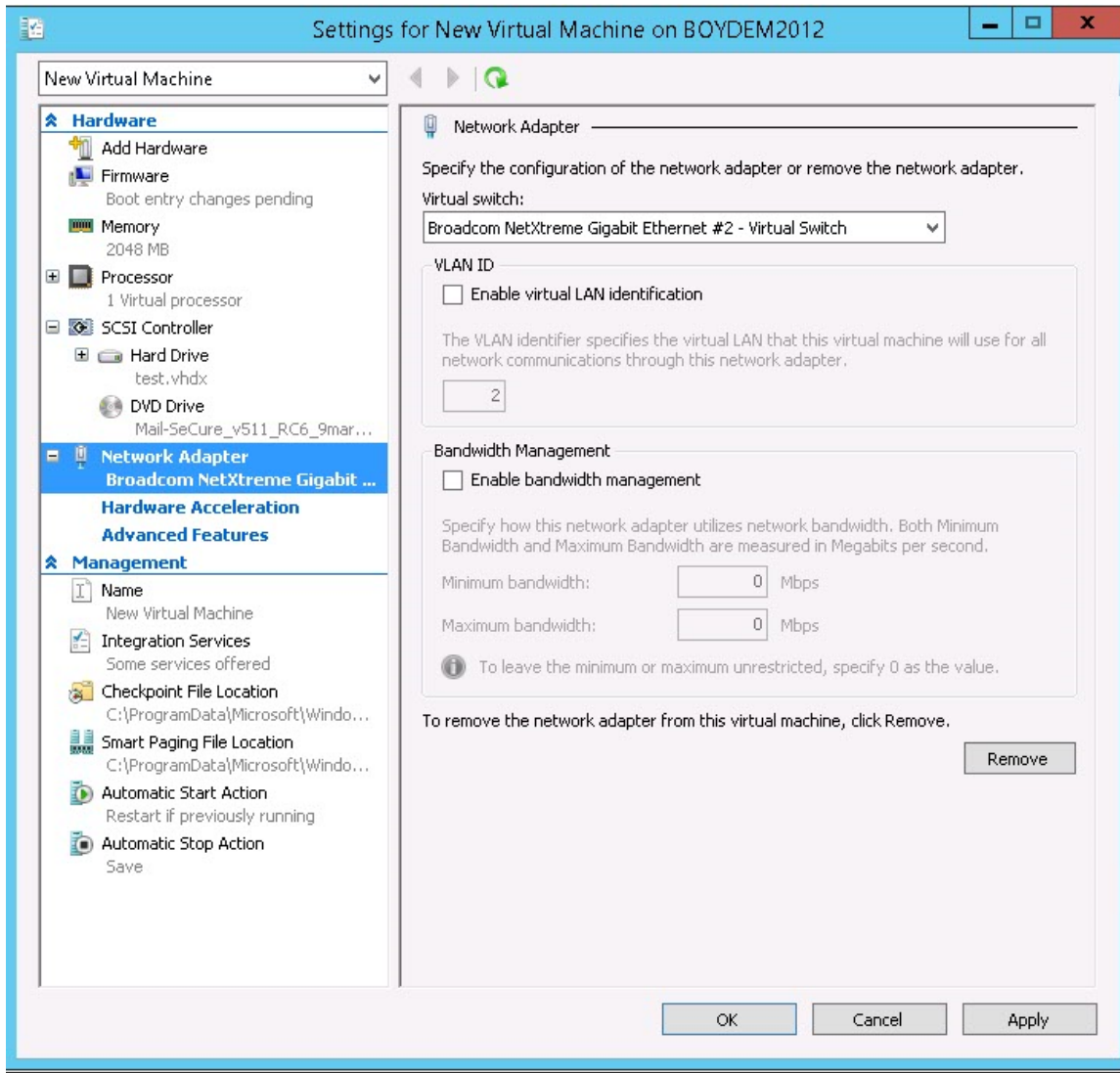


16. Select **Firmware** menu and choose to boot from **DVD Drive**.



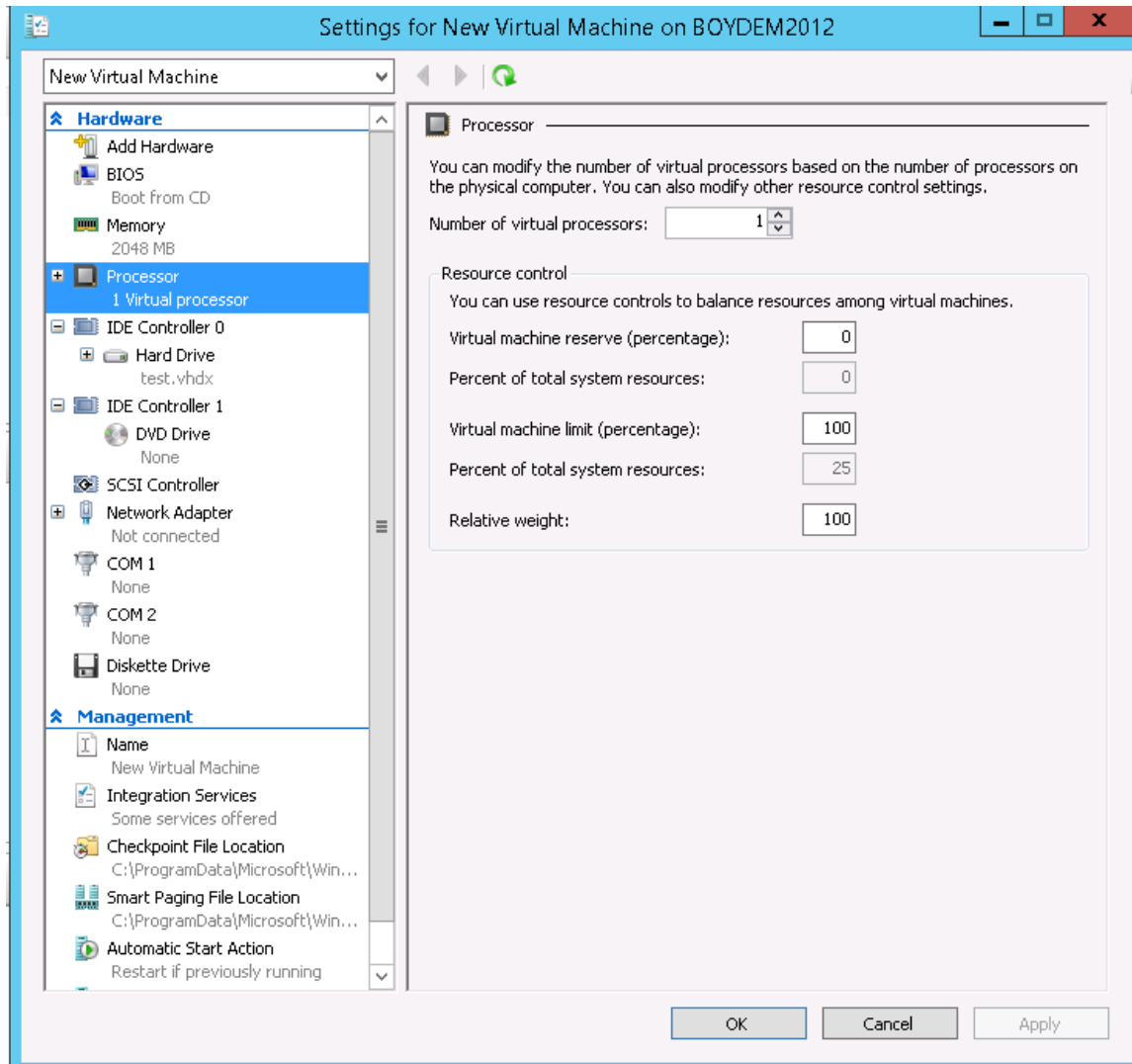


17. Under **Network Adapter** menu, please choose **NIC** as mentioned below and **Apply** Settings.





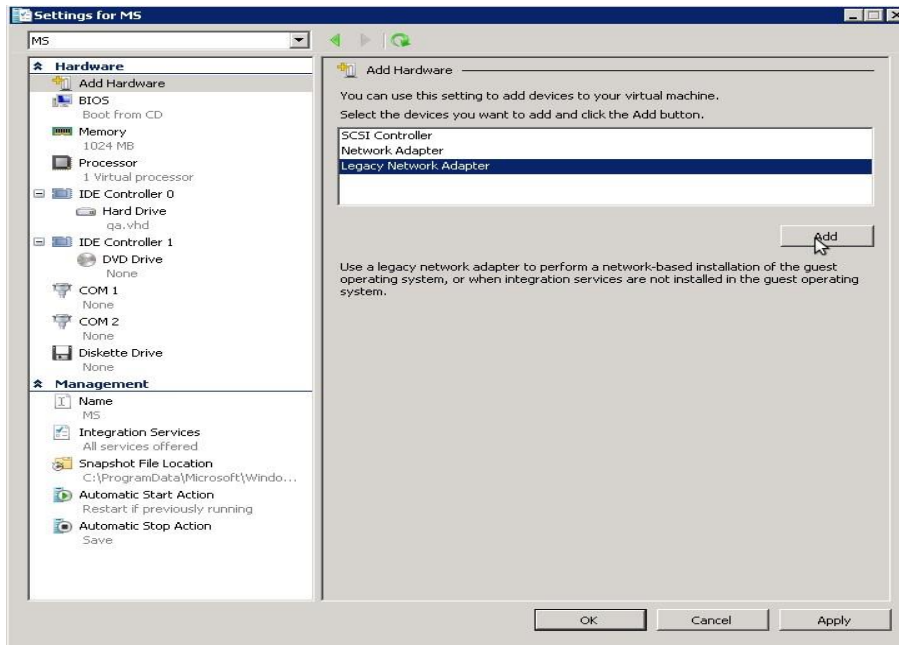
18. Under **Processor** menu, please choose required number of CPU cores, minimum recommended value is – **2 cores**.



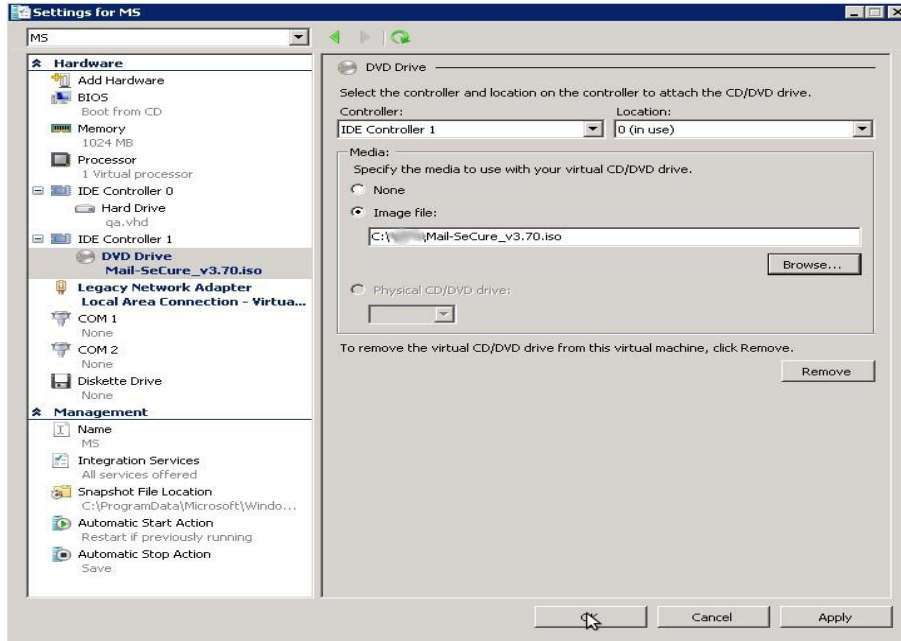
19. Make VM Adjustments; Connect to your VM (do NOT power on it yet!)

Go to **File->Settings**, and fill in the following settings in each of the tabs:

- **BIOS** - Ensure that the boot order is CD, IDE, Legacy Network adapter, Floppy



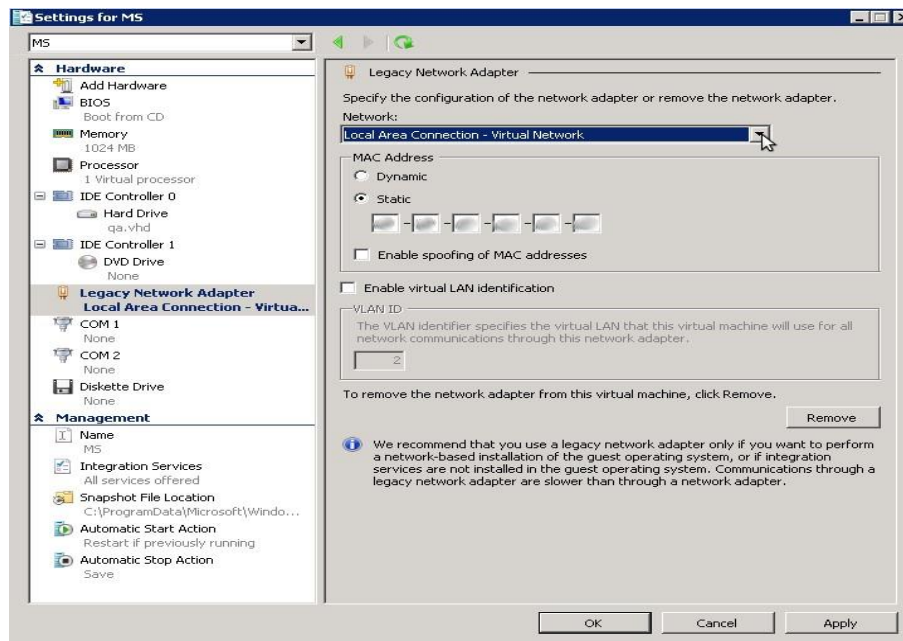
- **Memory** - tune up amount of memory (at least 1024MB)
- **Processor** - tune up amount of Virtual Processors (current version supports up to 8)
- **IDE Controller 0 (Hard Drive)** - point the drive to VHD image file previously created
- **IDE Controller 1 (DVD Drive)** - point the drive to the downloaded installation's ISO image file





20. Network Adapter:

- Remove existing adapter
- Click on Add Hardware, choose Legacy Network Adapter and click on Add
- In Network section choose your Virtual Network
- In MAC address section choose Static and write down desired MAC address
- Click **OK**





Step 2: Activating the PineApp Mail Secure product on a Virtual Machine

In order to complete installation and activate your newly installed virtual machine:

- a. Go to menu with virtual machines
- b. Check the newly added system
- c. **Power ON** new instance

About CYBONET

CYBONET, formerly PineApp, was originally established as an Email Security Solutions Company. Since 2002 CYBONET's internet security and network control products enable SMB/Es and Telcos to comprehensively protect their critical network infrastructure. Whether through the flagship PineApp Mail Secure solution or the next generation of Cyber Protection solutions, CYBONET is dedicated to security. With a renewed emphasis on our valued Partner community, as well as the development of a platform for Managed Service Providers to more efficiently deliver our solutions, CYBONET is committed to bringing our technologies to all corners of the globe.

For further details, contact info@cybonet.com

www.cybonet.com