



AtW Assessors Guide to Recommending Messenger Pigeon



What is Messenger Pigeon?

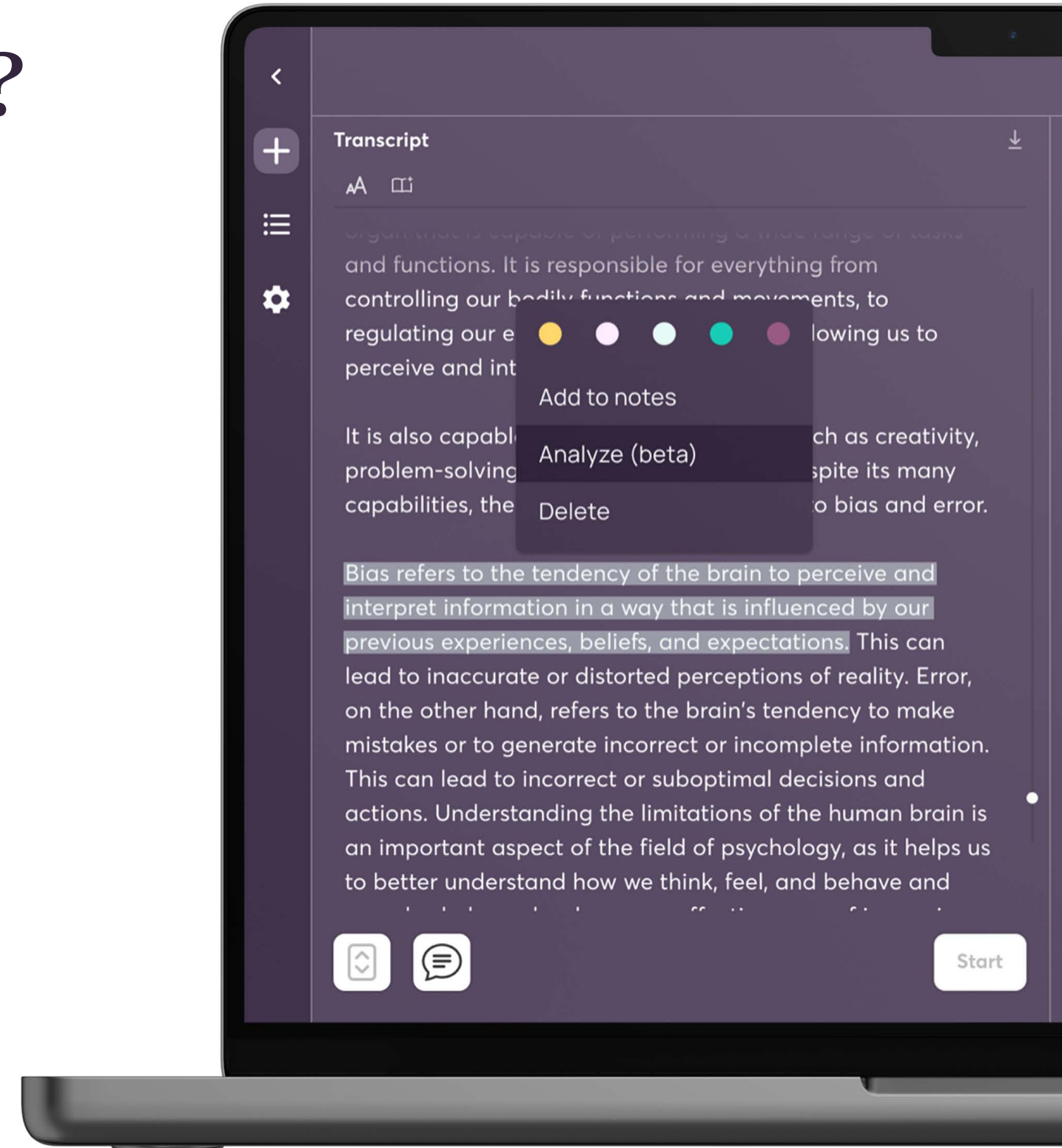
Messenger Pigeon is our comprehensive note-taking and transcription app. Designed to create more inclusive and meaningful workplaces. Messenger Pigeon allows you to not only capture and organize content but also engage with it.

Transcription: Fast and accurate transcription from any recording for more inclusive meetings and interactions.

Summary Notes: Jot down personalized insights and reminders with just one click.

AI Study Assistant: Engage with content and materials, using generative AI. Employees can choose from a selection of prompts designed for engagement.

Pro services: Additional options to connect to a team of professional note takers and captioners.



Who can benefit from Messenger Pigeon through AtW?

Reading and writing difficulties

Employees with dyslexia, dyspraxia, dyscalculia and other specific learning difficulties.

Mental health conditions

Employees with anxiety, depression, OCD, stress, ADHD/ADD, working memory difficulty and other mental health conditions.

Motion and dexterity

Employees who have difficulty with motion and dexterity skills.

Hearing impaired

Employees who are deaf or have hearing impairments

Reading and writing difficulties

Employees with dyslexia, dyspraxia, dyscalculia and otherspecific learning difficulties

Where Messenger Pigeon can help:

- Slow and labour-intensive writing or typing
- Difficulty listening and writing or typing at the same time
- Problems with spelling, which makes written notes challenging to comprehend
- Difficulty handwriting
- Difficulty summarising information
- Deficit in working memory
- Deficit in concentration

Key Messenger Pigeon features:

- Automated AI transcript
- One-click add to notes functions
- Bookmarking
- Customised interface: size, font and colours.
- AI Study Assistant to help employees engage with content and materials.

Mental health conditions

Employees with anxiety, depression, OCD, stress, ADHD/ADD, working memory difficulty and other mental health conditions

Where Messenger Pigeon can help:

- Deficit in working memory
- Deficit in concentration
- Anxiety around missing important information
- Cognitive load difficulties
- Feeling overwhelmed by large amounts of text
- Difficulty multitasking
- Difficulty organising materials and structuring work tasks.

Key Messenger Pigeon features:

- Automated AI transcript
- One-click add to notes functions
- Bookmarking
- Customised interface: size, font and colours.
- AI Study Assistant to help employees engage with content and materials.

Motion and dexterity

Employees who have difficulty with motion and dexterity skills

Where Messenger Pigeon can help:

- Difficulty or inability to write or type
- Difficulty handwriting

Key Messenger Pigeon features:

- One-click recording
- Automated AI transcript
- One-click add to notes functions
- Bookmarking
- Customised interface: size, font and colours.
- AI Study Assistant to help employees engage with content and materials.
- Additional access to professional captioners and note takers.

Hearing impairment

Employees who are deaf or have hearing impairments

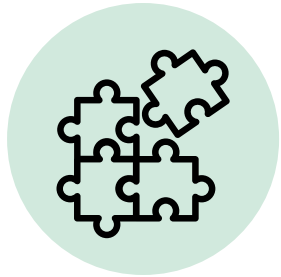
Where Messenger Pigeon can help:

- Difficulty or inability to interpret the spoken word
- Captions provided are often not accurate, customisable or downloadable.
- Captions are only provided for pre-recorded, planned media
- Feelings of stress and anxiety while waiting for transcripts and captions

Key Messenger Pigeon features:

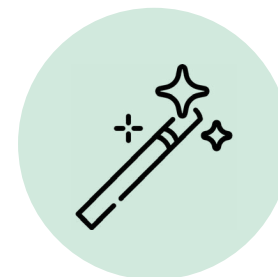
- Fast and accurate live captions
- Automated AI transcript
- One-click add to notes functions
- Bookmarking
- Customised interface: size, font and colours.
- AI Study Assistant to help employees engage with content and materials.

How does Messenger Pigeon help with barriers in the workplace?



Capture and Organize with Ease:

Consolidate all your content and materials effortlessly in one place—recordings, transcripts, and notes.



Intelligent Study Assistant:

Our flagship feature provides deep engagement. Get insightful summaries, relevant keywords, and interactive quizzes to reinforce knowledge and improve retention.



Access Anytime, Anywhere:

Enjoy flexibility with mobile, desktop, and web platforms. Access your learning materials wherever and whenever you need them.



Professional Services:

Enhance your employees experience with expert note takers and captioners.

Get in touch to learn more about recommending Messenger Pigeon !

salesuk@habitatlearn.com
+44(0)1483 473810