



CRAFTED TO REDUCE SMOKE™

WWW.BURLYUSA.COM



SPECIALTY FIRE PITS

GATHER

21" inside diameter | 18.5" tall
24" outside diameter | weight - 72 lbs
(Both inner & outer units weigh 36 lbs each)



Matte Black



Stainless

- Crafted to reduce smoke
- Easy to get a fire started - as long as the firewood is seasoned and not green or wet
- Produces significant radiant heat
- Very few sparks form compared to traditional wood burning fire pit
- Portable handles make it easy to move around

SCOUT

17" inside diameter | 17" tall
20" outside diameter | weight - 43 lbs



Matte Black



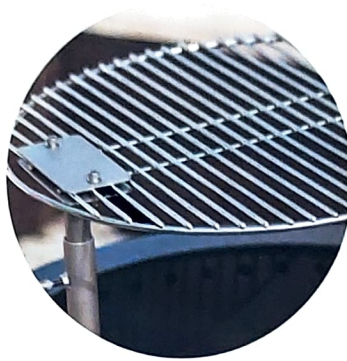
Stainless

- Long lasting
- Two piece system which allows for easy clean out and transport
- Each unit comes assembled ready to use
- Made in the USA
- Patent pending technology

ACCESSORIES



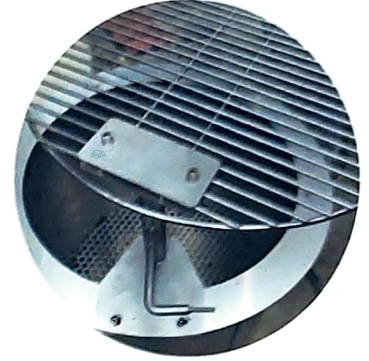
Gather Snuffer Lid



Gather Grill Feature



Scout Snuffer Lid



Scout Grill Feature



Fire Pit Gloves



Fire Poker



Fire Pit Cover



MAINTENANCE

For the matte black GATHER unit, please try to burn a hot fire in your fire pit within 24-48 hours of having your fire pit outside. The initial burn will help the paint fully cure on the outside and top of the fire pit. The color of the inside walls may show imperfections over time where there is direct contact with the flames. This is considered normal wear and tear.

For the stainless SCOUT unit, it is important to note that it will patina once used. The patina look gives the unit a bronze/copper hue with hints of purple. Burly fire pits are built with state-of-the-art craftsmanship, so your fire pit will last a long time with proper maintenance.

When the pit is not in use, the Burly team recommends a cover or to store in a garage or shed. Storing when not in use will help prolong the life of the product. Do not store inside unless the fire pit is cleaned out and completely cooled down. Covering the fire pit with the Burly snuffer lid will help increase the life of the product by keeping moisture out, which will prevent corrosion. Do not cover the fire pit until the fire is completely out.

Our two-piece design makes cleaning out your fire pit easy. Make sure to clean out the fire pit after every two or three fires. Cleaning out the ash will protect the unit and ensure that there is proper airflow. Do not leave ash in the bottom of the fire pit for extended periods of time.

SAFETY

Burly fire pits are designed for outside use only. Please reach out to us if you are considering placing your fire pit on any type of combustible surface such as a wooden or composite deck. Set up the fire pit on a level surface when using. Do not use a flammable liquid to start your fire. Never leave your fire pit unattended and keep children a safe distance away. The outside of the fire pit can get extremely hot and can cause severe burns if touched. Always wear gloves or use fire implements when making adjustments to the fire pit to avoid burns.

*Note: Consider purchasing our high-heat rated gloves and fire poker.

OUR STORY

Like many great endeavors, Burly started with a few friends gathered around a fire with an idea. It was simple: to invent a wood burning fire pit where no one gets stuck with the **smoky seat**.

Thus, the birth of the Burly... a heavy-duty, long lasting fire feature that is **easy to start and, more importantly, hand-crafted to reduce smoke**. Because the worst part about any campfire is having to play musical chairs every time the wind shifts. We have all been there, and it is no fun. With the Burly you don't have to thanks to its specially designed flange and airflow system which vaporizes the smoke almost entirely. Now, whether you are sitting on your backyard terrace or camping in the mountains, thanks to the Burly there is **no bad seat™ at the fire**.

HOW IT WORKS

The Burly fire pit has a unique 2-piece design feature that is engineered to **take away the headaches** associated with conventional outdoor wood fires. The fire pit has a **perforated, inner floor**, which allows for air to circulate under the fire making seasoned wood **ignite quickly and burn clean**.

The hot air is forced between the walls of the two units and is circulated **through holes** under our specially designed flange. These holes introduce oxygen **back into the fire** and excess smoke is burned off leaving an almost smoke free experience.





908.621.3017 ♦ stoltzfusshed@gmail.com
410 State Route 94, Columbia, NJ 07832
Rent to Own Options Available
RGSheds.com



#NOBADSEAT™



MADE IN USA



BREED



ZENTRO

Smokeless Fire Pit Insert

Designed for the patio enthusiast, our line of Zentro products is designed to accommodate any type of block, stone, or concrete backyard fire pit surround! We offer two Zentro fire pit sizes that fit almost any size fire pit surround. Installation time needed to turn your smoky block fire pit into an efficiently burning & beautiful centerpiece is less than a minute. No assembly is required, simply drop your Zentro unit into the top of your surround. Attach any of the optional add-on Breeo grilling accessories to your Zentro and cook an epic meal, then remove, and settle in for a long evening of relaxing around your smokeless fire!





AVAILABLE IN 2 SHAPES, 2 SIZES, & 2 MATERIALS!

ZENTRO 24 INCH:

**Fits into 27- 33" Inside Diameter of Block,
Paver, or Stone Surround
Seating Estimate: 8-9 People**

ZENTRO 30 INCH:

**Fits into 34- 39" Inside Diameter of Block,
Paver, or Stone Surround
Seating Estimate: 10-11 People**

ZENTRO 24 INCH SQUARE:

**Fits into 27-33" Inside Diameter of Block,
Paver, or Stone Surround
Seating Estimate: 9-10 People**

**ALL 3 VARIANTS ARE AVAILABLE IN:
Steel Painted Black or 304 Stainless Steel**





LUXEVE 24 INCH

Inside Diameter: 24"

Outside Diameter: 33"

Material: 304 Stainless Steel

Height: 15"

Weight: 135.5 lbs.



CHOOSE YOUR FIRE GLASS COLOR:



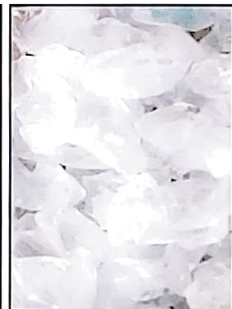
Black



Blue



Brown



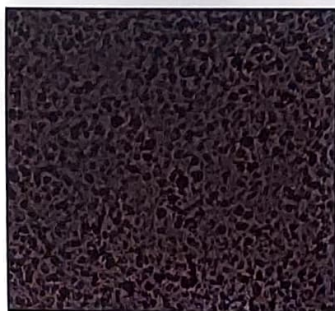
Clear



Gray



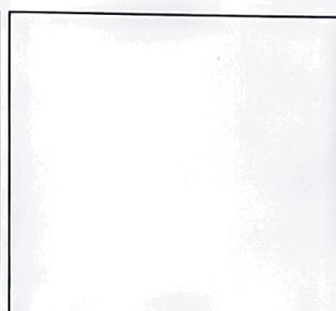
CHOOSE YOUR OUTER WALL COLOR:



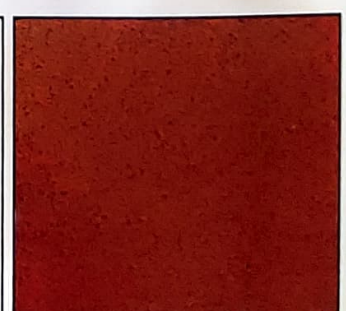
Silver Vein



Bronze Vein



White River



Earth Rust

Modern & elegant with clean lines and an air of sophistication, the Luxeve fire pit brings class to the world of wood-burning fire pits. Designed in stainless steel with a powder-coated exterior wall and colorful fire pit glass around the rim, the Luxeve allows you to create your own unique look. Designed for use on patios and outdoor spaces all across the country, the Luxeve is a beautiful campfire experience.



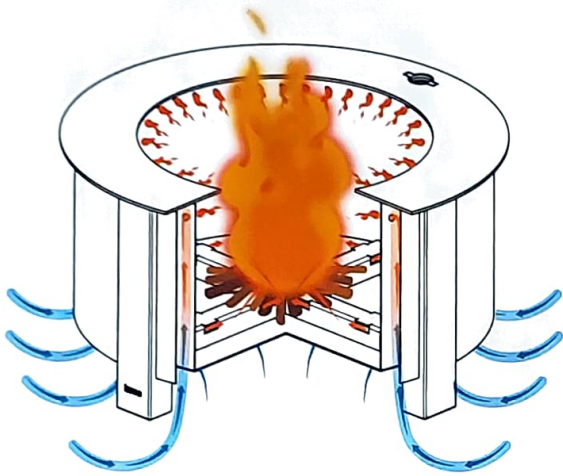
LUXEVE

Smokeless Fire Pit



Here at Breeo, we are passionate about bringing people together through fire and food. With our handcrafted, American-made, and lifetime-warrantied fire pits, you will have the tools needed to become a Firemaster, someone who has the ability to build beautiful fires and to cook epic meals over those open flames. All of our fire pits are built with the same secondary combustion technology that we pioneered almost 10 years ago, allowing you to enjoy smokeless fires all year round.

Our newest product line, the X Series, is designed to bring legendary open-fire wood cooking straight to you. Built for the backyard grillmaster, it's the only fire pit with our patent-pending Sear Plate. With the ability to sear steaks at 1,000 degrees, a patent-pending post lock system, and optional accessories including a newly redesigned grill and kettle hook, the X Series Fire Pit™ is the grilling experience of a lifetime, as well as an epic backyard fire pit.



**BUY A BREEO,
BECOME A
FIREMASTER!**





Introducing the **X SERIES** Fire Pit™

X SERIES 19 FIRE PIT™

Inside Diameter: 19"

Outside Diameter: 23.5"

Height: 15"

Weight: 56 lbs.

Sear Plate Width: 3.5 in.

X SERIES 30 FIRE PIT™

Inside Diameter: 30"

Outside Diameter: 35.5"

Height: 15"

Weight: 110 lbs.

Sear Plate Width: 7 in.

BR-X19P

BR-X19PS

BR-X19S

BR-X19SS

BR-X30P

BR-X30PS

BR-X30S

BR-X30SS

X SERIES 24 FIRE PIT™

Inside Diameter: 24"

Outside Diameter: 29.5"

Height: 15"

Weight: 78 lbs.

Sear Plate Width: 4.5 in.

BR-X24P

BR-X24PS

BR-X24S

BR-X24SS

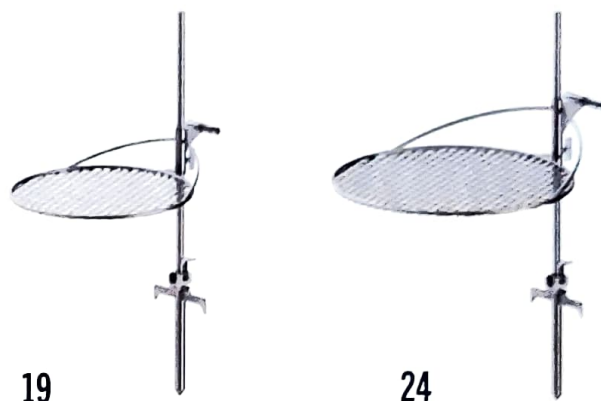
All X Series Legs & Searplates: 304 Stainless Steel

X Series Fire Pits are all available with COR-TEN Steel or Stainless Steel Outer Walls, and with or without the searplate.

OUTPOST

19" or 24" with Carrying Bag

The Outpost offers a clean, simple solution for campfire cooking no matter where you are: the backyard, beach, or campground. Our patent-pending Anchorpoint® allows you to firmly plant the Outpost® system in the ground to give you a stable grilling surface anywhere! If you already have one of our fire pits, lock the grill and post quickly and easily into that!



OUTPOST 19" & 24"

High Grade 304 Stainless Steel

Solid Stainless Post

Machined Tip

Stainless Welds

Individually Hand Welded



**ZENTRO 24" ROUND SMOKELESS FIRE
PIT INSERT WITH LID**

**ZO-24SLFP OR
ZO-24SLFP-SS**

- Fits into 27" - 33" Inside Diameter of Block Surround
- Inside Diameter: 24"
- Top Flange Outside Diameter: 35"
- Height: 12"
- Weight (Steel): 99 lbs.
- Weight (Stainless Steel): 105 lbs.



**ZENTRO 30" ROUND SMOKELESS FIRE
PIT INSERT WITH LID**

**ZO-30SLFP OR
ZO-30SLFP-SS**

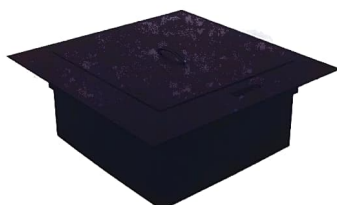
- Fits into 34" - 39" Inside Diameter of Block Surround
- Inside Diameter: 30"
- Top Flange Outside Diameter: 41"
- Height: 12"
- Weight (Steel): 120 lbs.
- Weight (Stainless Steel): 127 lbs.



**ZENTRO 24" SQUARE SMOKELESS FIRE
PIT INSERT WITH LID**

**ZO-24SLFP-SQ OR
ZO-24SLFP-SQ-SS**

- Fits into 27" - 33" Inside Dimensions of Block Surround
- Inside Dimensions: 24"x24"
- Top Flange Outside Dimensions: 35"x35"
- Height: 12"
- Weight (Steel): 124 lbs.
- Weight (Stainless Steel): 130 lbs.



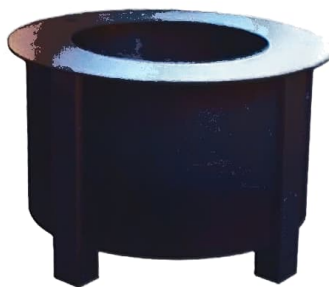
COMPLETE THE COLLECTION:



**OUTPOST 24
BR-OP24**



**BREEO 24
KETTLE HOOK
BR-KH24**



X SERIES 19 SMOKELESS FIRE PIT

- Seating Estimate: Approx. 4-6 people
- The Ultimate Grilling Fire Pit
- Patent-pending X Airflow™

COMPLETE THE COLLECTION:



OUTPOST 19
BR-OP19



BREEO 19 KETTLE
HOOK
BR-KH19



X SERIES 19 LID
STAINLESS STEEL
BR-LD19



X SERIES 19 INSERT
RING - STAINLESS STEEL
BR-IN19RD
Fits into 22-26" surround

BR-X19P
BR-X19PS
BR-X19S
BR-X19SS



X SERIES 24 SMOKELESS FIRE PIT

- Seating Estimate: Approx. 7-9 people
- The Ultimate Grilling Fire Pit
- Patent-pending X Airflow™

COMPLETE THE COLLECTION:



OUTPOST 24
BR-OP24



BREEO 24 KETTLE
HOOK
BR-KH24



X SERIES 24 LID
STAINLESS STEEL
BR-LD24



X SERIES 24 INSERT
RING - STAINLESS STEEL
BR-IN24RD
Fits into 27-33" surround

BR-X24P
BR-X24PS
BR-X24S
BR-X24SS



X SERIES 30 SMOKELESS FIRE PIT

- Seating Estimate: Approx. 10-14 people
- The Ultimate Grilling Fire Pit
- Patent-pending X Airflow™

COMPLETE THE COLLECTION:



OUTPOST 24
BR-OP24



BREEO 24 KETTLE
HOOK
BR-KH24



X SERIES 30 LID
STAINLESS STEEL
BR-LD30



X SERIES 30 INSERT
RING - STAINLESS STEEL
BR-IN30RD
Fits into 34-39" surround

BR-X30P
BR-X30PS
BR-X30S
BR-X30SS

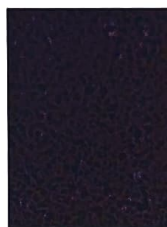


LUXEVE 24" SMOKELESS FIRE PIT WITH LID

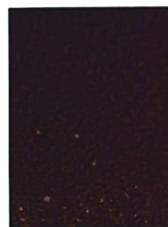
LU-24SLFP

- Seating Estimate: Approx. 8-9 people
- Includes 1 13lb. bag of fire glass
- Lid Included

AVAILABLE OUTER RING COLORS:



Silver Vein



Bronze Vein



White River



Earth Rust



BREEO 19 SPARK SCREEN

BR-SS19

- Stainless Steel
- For use with the X Series 19 Fire Pits ONLY



BREEO 24 SPARK SCREEN

BR-SS24

- Stainless Steel
- For use with the X Series 24 & Zentro 24" Round Fire Pits ONLY



BREEO 30 SPARK SCREEN

BR-SS30

- Stainless Steel
- For use with the X Series 30 and Zentro 30" Round Fire Pit ONLY



BREEO CAST IRON KETTLE

BR-1380: 1.25 GALLON
BR-1381: 1.75 GALLON
BR-1382: 2.25 GALLON

- Lid Included
- Pre-Seasoned



BREEO ASH REMOVAL TOOL

BR-ART

- Stainless Steel
- For Use with All Breeo Fire Pits



BREEO LEATHER BBQ APRON

BR-LAPN

- 100% Real Leather
- Adjustable Neck Strap
- 29" Long x 22.5" Wide



BREEO TRUCKER HAT

BR-BLHT OR BR-WLHT

- Black or White
- Snapback Closure
- One Size Fits Most
- 100% Leather Patch



570.216.5670 ♦ stoltzfusshed@gmail.com
410 State Route 94, Columbia, NJ 07832
Rent to Own Options Available
RGSheds.com