

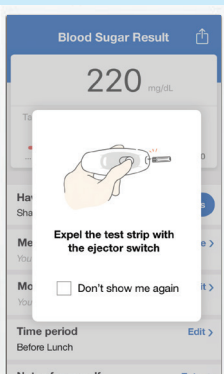


**iHealth® Unified Care**  
Your personal care team connecting  
your home and doctor's office

## Blood Sugar Testing

### Quick Start Guide

#### 9 Eject the strip Use the switch to expel the text strip



The switch is the on the  
back of the device

#### Test Strip Storage:

Discard 5 months after opening. Do not store in direct sunlight or in refrigerator. Do not combine test strips from different bottles. Do not put lancets in test strip bottle. Make sure test strip box is stored at room temperature (60° to 80°F) for at least 2 hours before opening.

#### 1 Equipment list



iHealth Gluco+



Lancing Device



Lancet



Test Strip

#### 2 Loading the lancet Puncture Depth: 1=Shallowest, 5=Deepest



1



2



3



4



5



6

Unified Care Technical Support (866) 899-3998

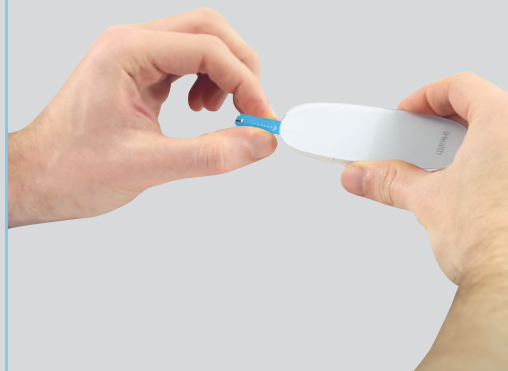
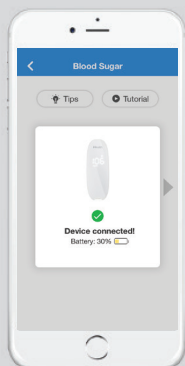
### 3 Prep your finger Wash hands and massage finger for blood flow.



**i** The Unified Care mobile app must be open at this point. Press the START button on the home page to begin measuring.

### 4 Connect the device through Bluetooth and insert test strip

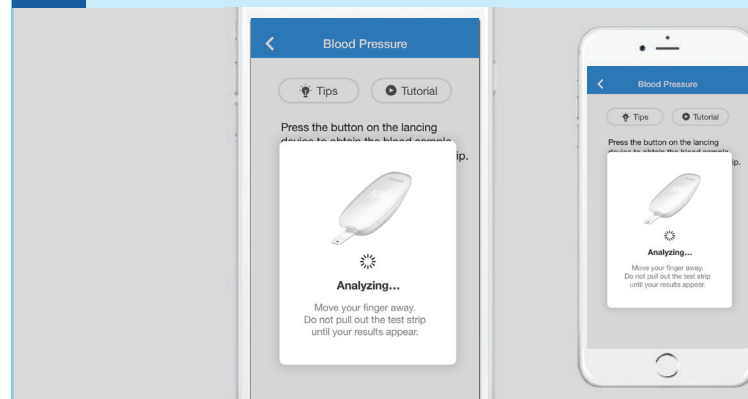
Make sure your Bluetooth is ON



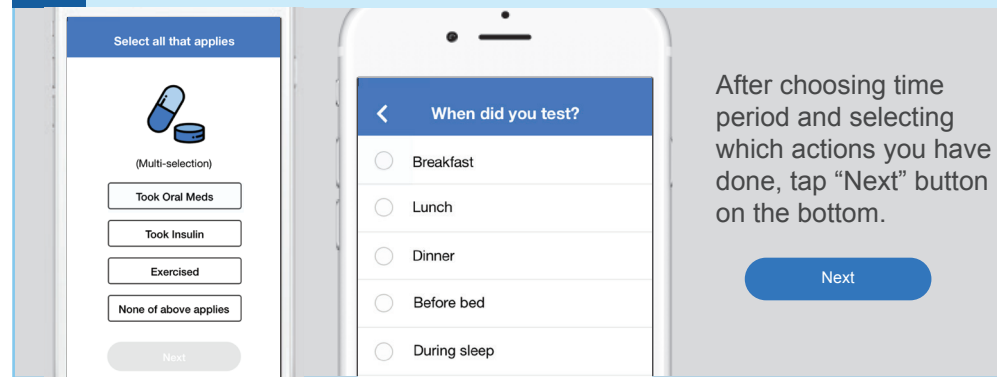
### 5 Blood sample Touch blood sample to the tip of the test strip.



### 6 Wait for the result It takes about 5 seconds to analyze sample.



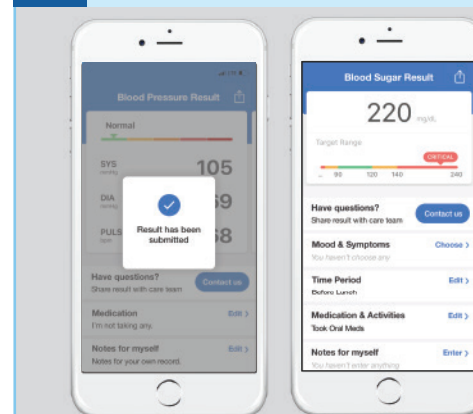
### 7 Provide Details Select medication and time period.



After choosing time period and selecting which actions you have done, tap "Next" button on the bottom.

Next

### 8 View Results The result will be submitted automatically.



Tap on "Contact us" if you have any questions about your reading. You can also leave a note for your own record.

After the measurement, please expel the test strip with the ejector switch on the back of the device.