



iHealth® Unified Care
Your personal care team connecting
your home and doctor's office

Replace battery



Waste Disposal:

Lancets must be inserted back into the cover before disposal to prevent injury. Used test strips and lancets must be disposed into a sharp container.

Test Strip Storage:

Discard 5 months after opening. Do not store in direct sunlight or in refrigerator. Do not combine test strips from different bottles. Do not put lancets in test strip bottle. Make sure test strip box is stored at room temperature (60° to 80°F) for at least 2 hours before opening.

Unified Care Technical Support (866) 899-3998

Blood Sugar Testing

Quick Start Guide

1 Equipment list



iHealth Align



Lancing Device

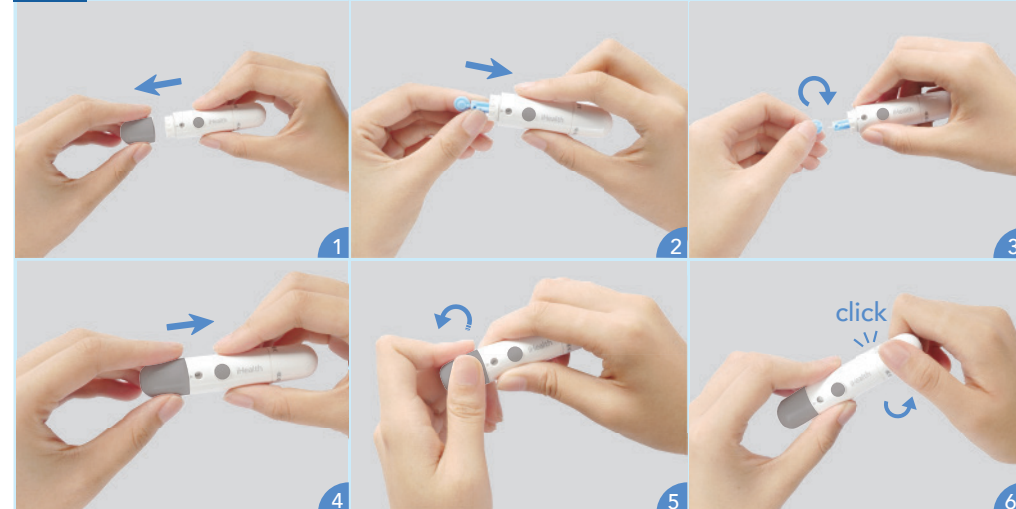


Lancet



Test Strip

2 Loading the lancet Puncture Depth: 1=Shallowest, 5=Deepest

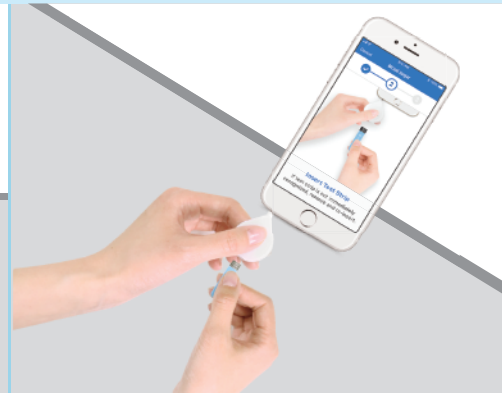


3 Prep your finger Wash hands and massage finger for blood flow.



i The Unified Care mobile app must be open at this point. Press the START button on the home page to begin measuring.

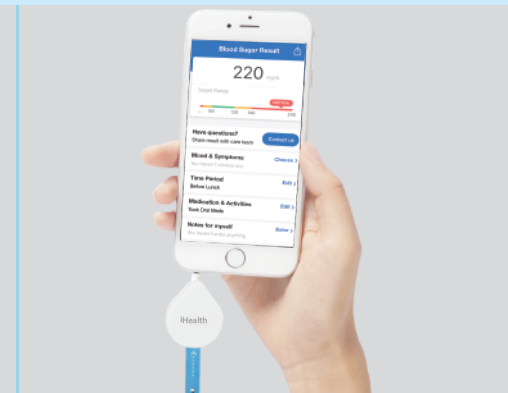
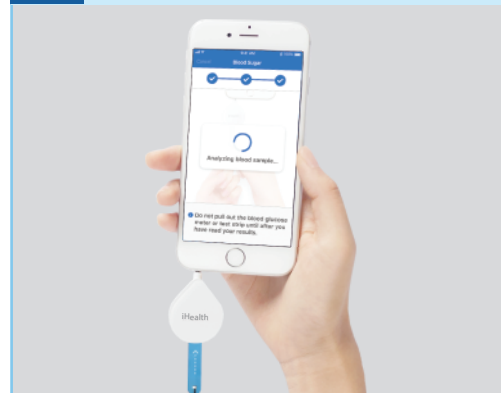
4 Connect the meter and insert test strip



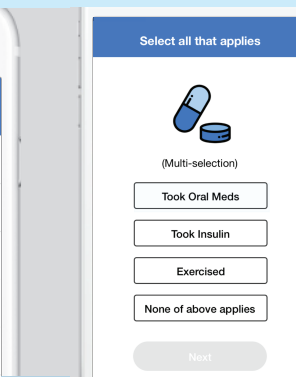
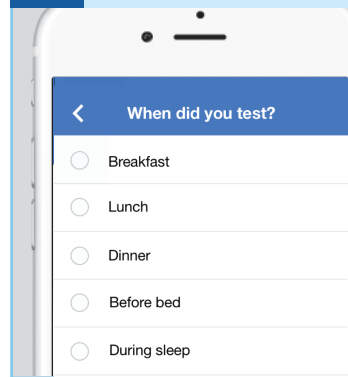
5 Blood sample Touch blood sample to the tip of the test strip.



6 Wait for the result It takes about 5 seconds to analyze sample.



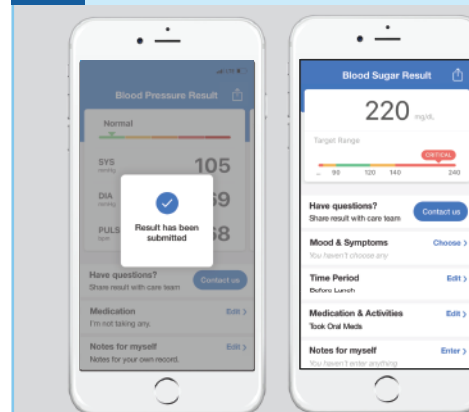
7 Provide Details Select time period and medication.



After choosing time period and selecting which actions you have done, tap "Next" button on the bottom.

Next

8 View Results The result will be submitted automatically.



Tap on "Contact us" if you have any question about your reading. You can also leave a note for your own record.