

Prepare for the new office

Solution overview.



A better workplace. Suited for the future.

The office is the setting of our work lives. It's a reference point. A base. The office constitutes the point of departure of everything the company does and creates. On a low level, this is where the people of the company spend most of their waking hours - even in a world of remote work and flexible work hours.

The way we use our offices has a great influence on company culture, performance, job satisfaction, and costs. And, long-term, even on the climate.

The Ubiqisense solution is helping transform a building from a bunch of bricks into a living and comfortable environment which stimulates productivity and creativity, and it contributes to shaping the smart 21st-century workplace as well as making it future proof.

Your benefits

End-to-end solution

Highly intelligent sensors, best-in-class data granularity, open APIs, and a comprehensive analytics platform offers you the most versatile end-to-end solution available

Futureproof AI

The intelligent workspace sensors deploy the latest in deep learning with continuous deployment of sensor intelligence improvements and new features seamlessly over-the-air.

Actionable insight

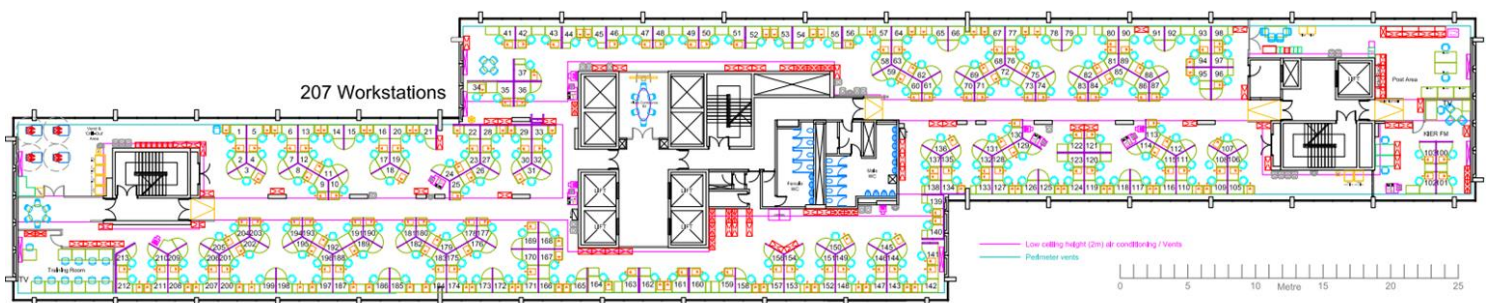
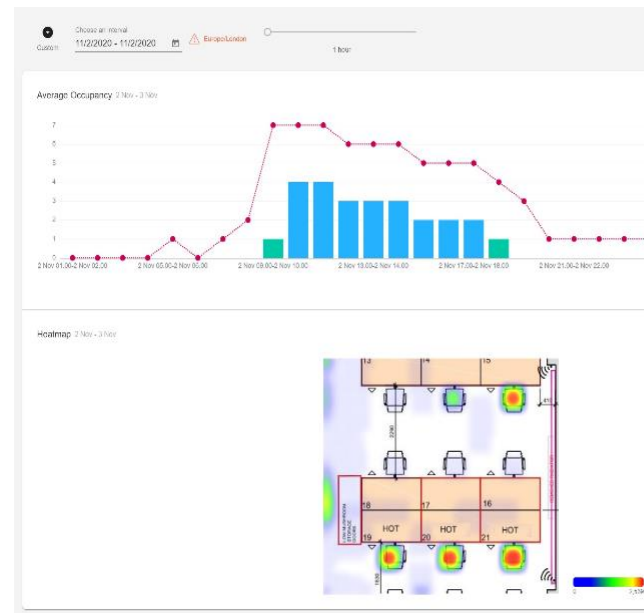
Access to dashboard offers insights that are highly actionable to help maximize office (and building) spaces, eliminate employee waste time, and save millions in unused real estate



Use cases

Ubiqisense will help you answer the below questions

- How many people have used/are using our buildings, rooms and desks?
- Which areas have been utilized - how frequently and by how many?
- What is the utilization rate of our rooms and workstations?
- Are our meeting rooms the right size for our needs?
- Do we have sufficient space to stop viral spread?
- How is the occupancy level evolving?
- Do we need more space or less in the future?



Sense humans. Optimize space.



Ubiqisense has introduced a new technology which gives you unique and detailed insights into how you use your office, and how it can be optimized.

The core solution is an AI-based sensor which collects data on your interactions with the office and the building, and it helps you adjust. All this with the aim to support company culture and the needs of employees and to create a workplace which spurs innovation, growth, and job satisfaction.

The sensor, which is of Danish design and 100% GDPR-compliant, is mounted discreetly on the wall, from where it registers the number of people and their occupancy in different areas and rooms as well as behavioral and activity-based patterns in the building.

01 Foot Fall

Get accurate people counting across meeting rooms, offices, entries, and exits.

03 Occupancy

Remove the guesswork and identify your factual office and building usage. Narrow your search across sites, offices, and meeting rooms and transform your building into a smart, people-centric hub.

05 Sensor stitching

Our stitching sensor solution is relevant when bigger areas of interest are needed and multiple sensors are required. Stereo calibration makes it possible to have many sensors work as one.

07 Unlimited users

Enable as many users with different user rights as needed. The Dashboard comes with three predefined users: Super Admin, Technical user, and view only.

02 Automation

Avoid meeting rooms and desks appearing booked when actually being empty. No-shows are no longer a problem. Integrated with any booking or workspace management system through the free of charge API.

04 Social distance

Define the maximum number of people in a space and be notified when the limit is reached, making it easier to plan for a safer and more controlled return to the office.

06 Virtual Zones

Create specific areas and zones down to single desks in our system and get full insights on usage. Integrate into any booking system for desk booking capabilities.

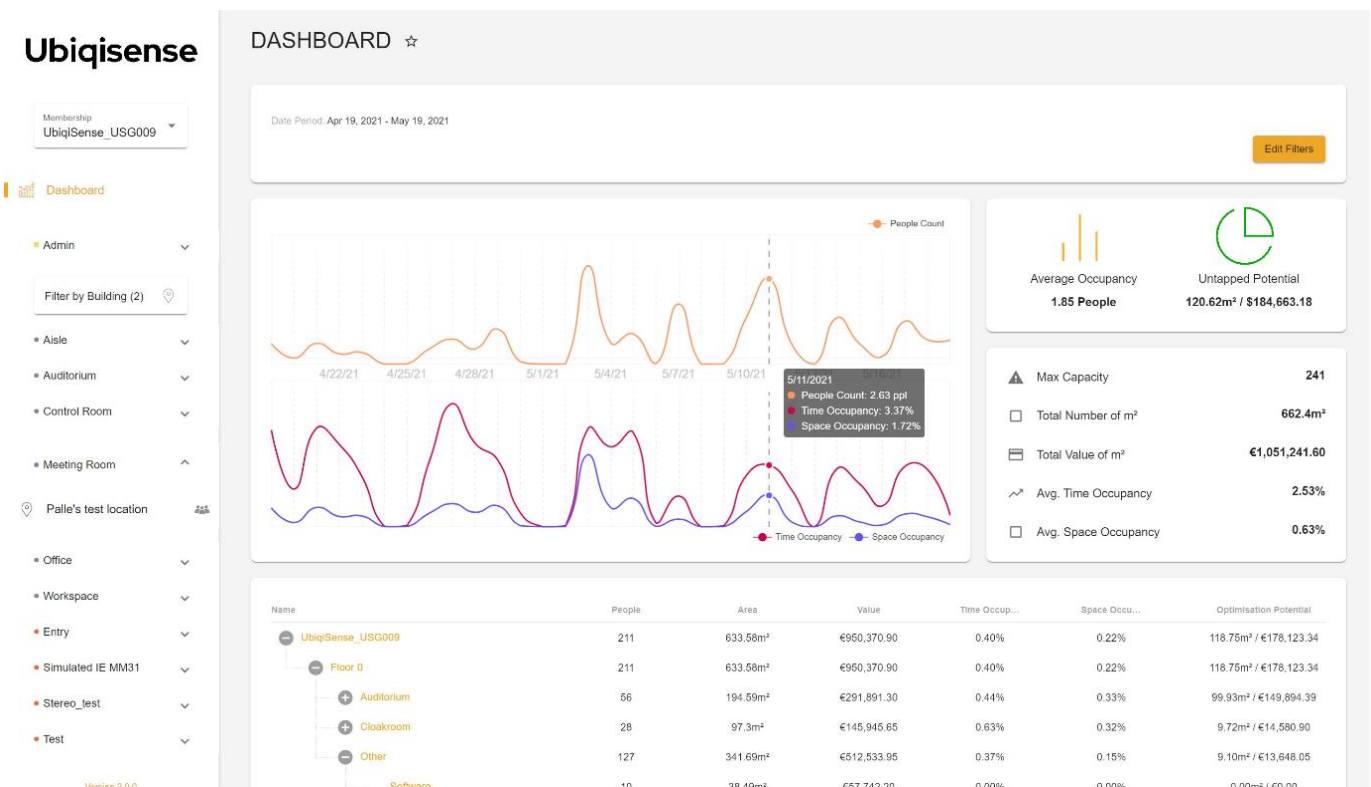
08 Geo fencing

Control and manage the sensor coverage area and avoid double counting, blind zones, glass walls, and irrelevant spaces.

Dashboard

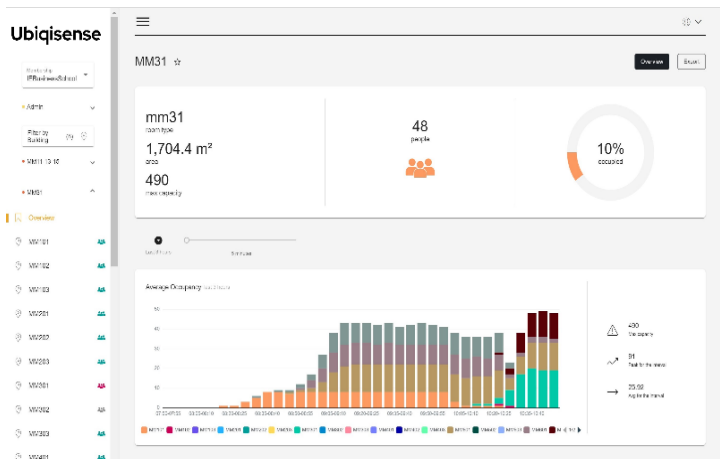
The dashboard helps users and organizations view and compare data across the entire building portfolio in an easy and intuitive manner.

[Book a demo](#)



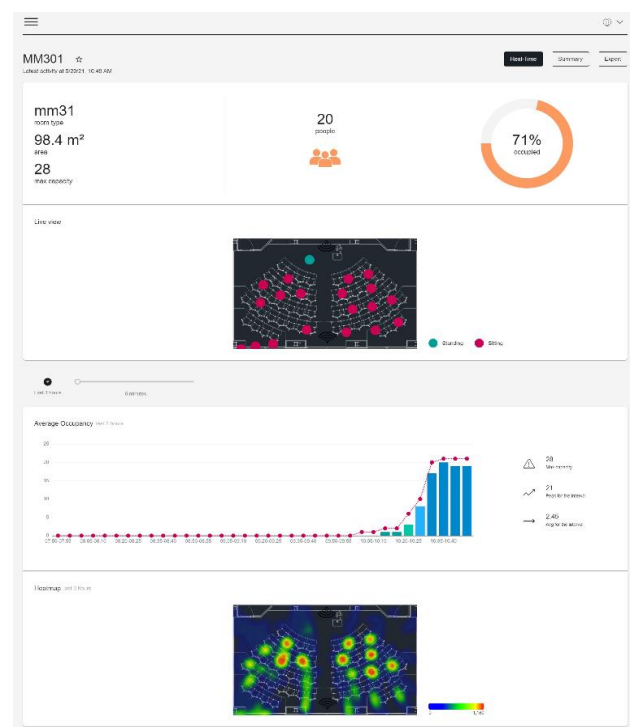
Monitor. Analyze. Adapt

It has never been easier to understand the way tenants, employees, and visitors use their premises while locating under-utilized spaces.



Get an overview of all similar room types or rooms belonging the specific department in real time as well as historically,

Dive deep into the individual locations to get real-time occupancy, Live View of the positions of people present, whether they are standing or sitting, as well as a heatmap showing the most utilized areas in the location



"Enterprise customers can benefit from Ubiqisense occupancy sensors which are seamlessly integrated with Planon software solutions. The highly valuable and reliable insights into building occupancy are becoming more and more important and valuable."

**Iwan van Eldijk,
VP Partnership & Alliances**



Verticals

Serving your purpose

Corporate offices

Minimize your operational cost

Count footfall in all entries and exits and learn the number of visitors in peak periods. Adjust your office set-up, manage operational cost, and ensure your employees' safety by only allowing a limited number of people.

Develop Company Culture

Enrich your company culture with sensor data providing valuable insights into how people and employees interact in the office space.

Avoid bad decisions and unnecessary costs

Get powerful workplace insights across single and multiple sites with the click of a button. Always be ahead to see trends, patterns, and potential space challenges.



Verticals

Serving your purpose

Co-working spaces

Ensure tenant satisfaction and prevent cancelled contracts

Using our intelligent software in your property enables you to identify issues before they turn into real problems such as residents outgrowing available space.



Higher education

Ensure tenant satisfaction and prevent cancelled contracts

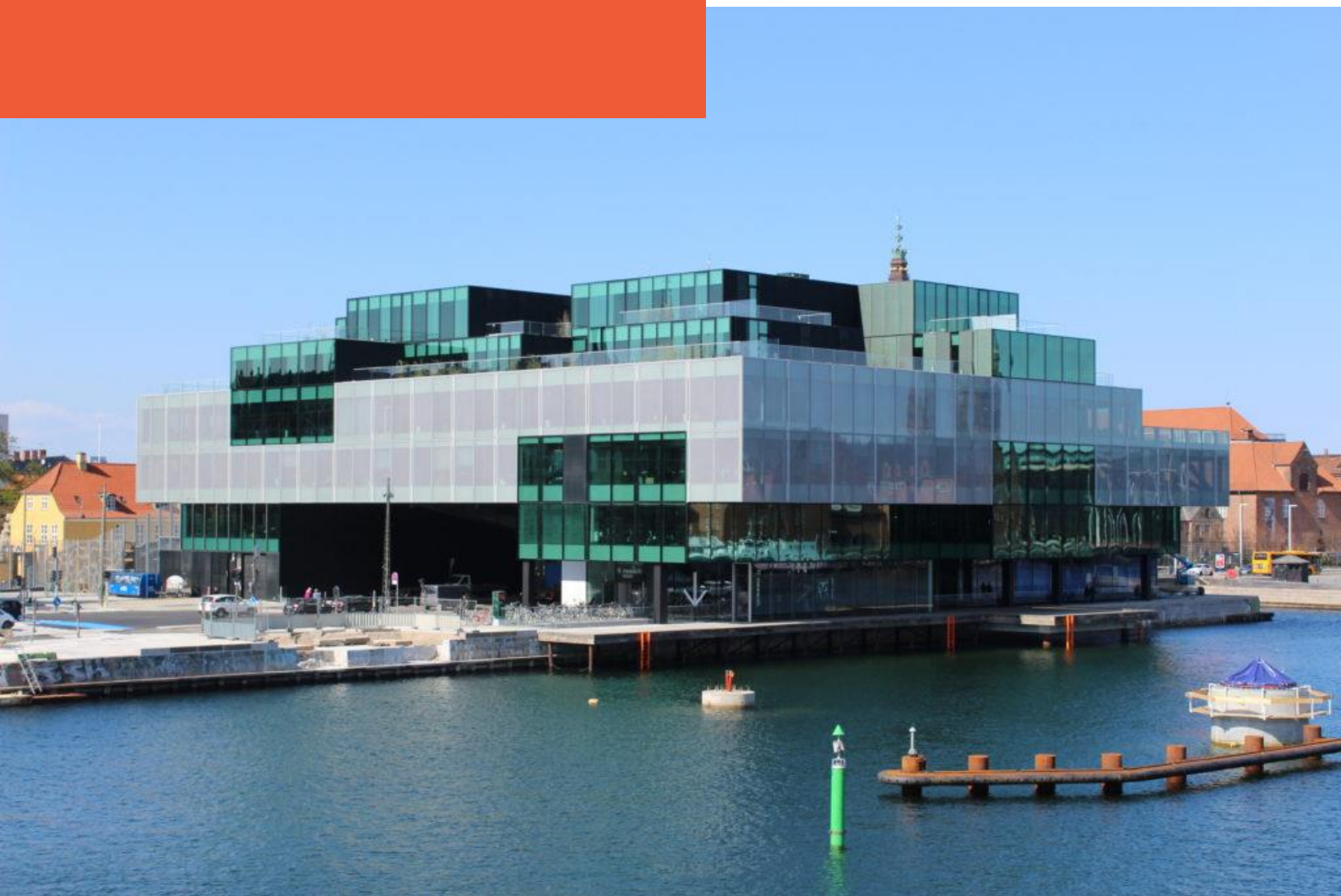
Using our intelligent software in your property enables you to identify issues before they turn into real problems such as residents outgrowing available space.

“With Ubiquisense’s solution, we gain insights on how and when our spaces are being utilized.

This enables us to adjust and be ahead of our customers' needs while maximizing our spaces as every square meter comes with a cost.”

Frederik Tauber
Chief Operating Officer

BLOX



Technology partners

Space Management, Booking system,
Video management, and more..



Our mission

Empowering human interaction

We transform spaces
into a living and
intelligent environment
which stimulates
productivity and
ultimately shapes the
21st-century workplace.

