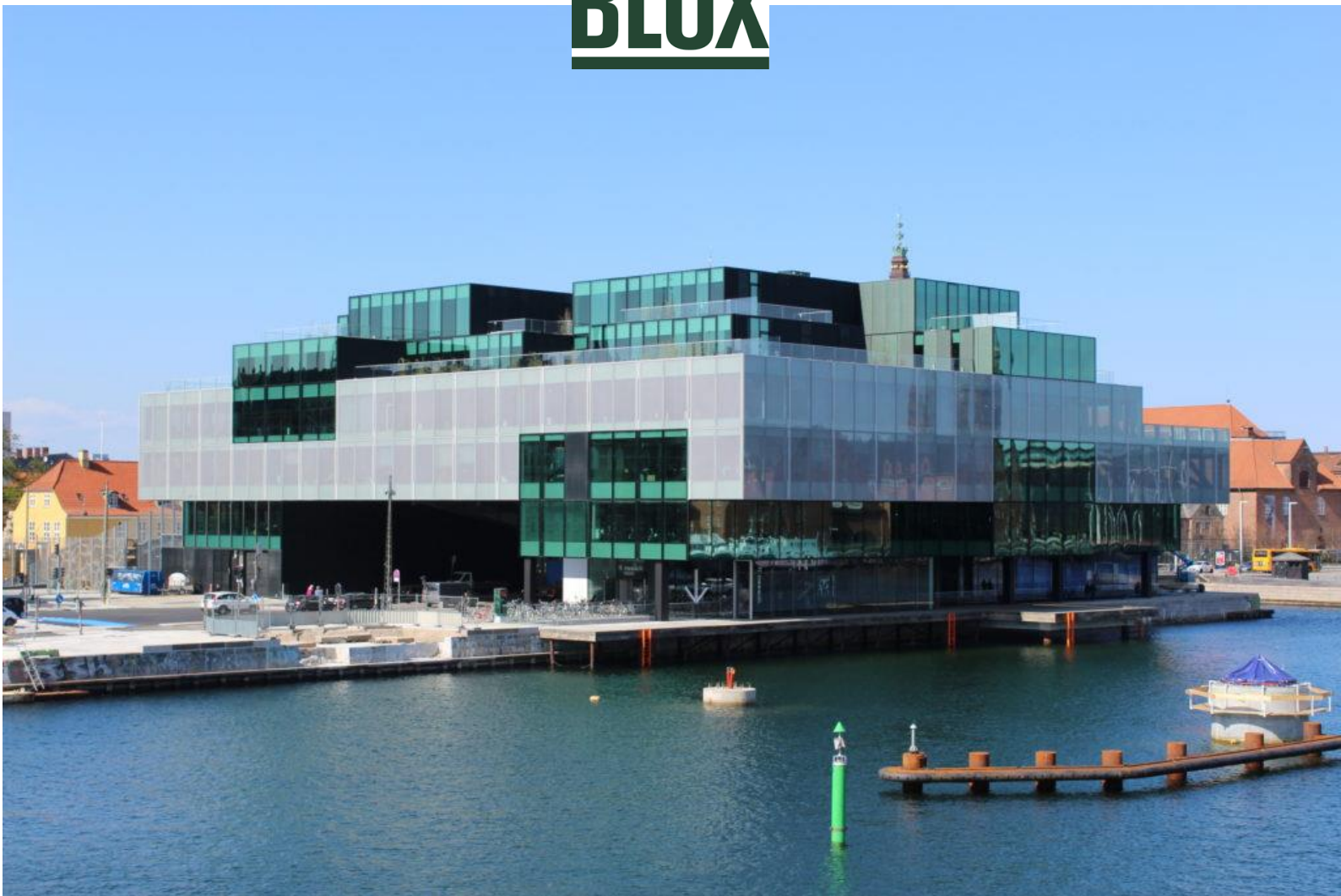


Customer story

How Bloxhub maximizes every square feet through occupancy analytics

BLOX



A better workplace. Suited for the future.

Background

By 2050, two thirds of the world's population will have moved to cities, making the urbanization of society ever more prevalent. The other side of the coin, however, is that this will demand more from the cities and buildings, with cities running the risk of being overpopulated.

Bloxhub is a 100.000 square feet co-working space and innovation hub centered in the BLOX building in central Copenhagen.

With a large, modern, and easily recognizable black building facing the water, Bloxhub is the Nordic center of innovation and urbanization. However, it doesn't stop there - Bloxhub and its partners work on both a local and global scale, co-creating an urban future.

"We needed to figure out a way to utilize the meeting rooms in a much more efficient way".

Frederik Tauber,
Chief Operating Officer, Bloxhub



Increase human interaction. Actionable insights.

Challenge

Having 120+ companies, 350 member organizations, more than 800 daily visitors, and a growing number of new customers, Bloxhub's co-working space is facing a major challenge in providing the best working and meeting environment while reaching maximum floor and room capacity.

What constitutes the biggest pain for Bloxhub are misused meeting rooms and ghost meetings, which is when a room is reserved, but no-one shows up. This is a problem when there's already a capacity shortage.

Balancing between limited space, employee growth, and a fixed number of meeting rooms between the members is an ongoing challenge that needs to be solved.

Adjusting to cater for the future, it's a challenge for Bloxhub to ensure smooth booking, seating, desks, and a good work environment for all users and tenants.

"It's guaranteed that there will never be enough meeting rooms and increasing more floor capacity is simply not an option."

Frederik Tauber,
Chief Operating Officer, Bloxhub



Monitor occupancy. Optimize space.



Solution

For Bloxhub's business model, adjustments to doing rental and utilizing both hot desks and fixed desks are very important. Apart from that, for residents and visitors to be satisfied, meeting room utilization had to be optimized, and Bloxhub needed data to do just that.

Sensors

Understanding people, employee, and building behavior became a must, and through smart occupancy sensors, Bloxhub could start monitoring and tracking how meeting rooms, open spaces, break out areas, and desks were used on a daily, weekly, and monthly basis.

As part of the decision process, Bloxhub wanted sensors that wouldn't intrude on the décor of the building while being GDPR compliant, making Ubiqisense's discreet sensors the perfect choice.

Today, Ubiqisense helps Bloxhub utilize meeting rooms more efficiently through smart occupancy sensors that allow Bloxhub to monitor real-time and historical occupancy data.

Time is money So is space.

Dashboard

The intelligent occupancy sensors allow Bloxhub to monitor real-time and historical occupancy data using a cloud-based dashboard.

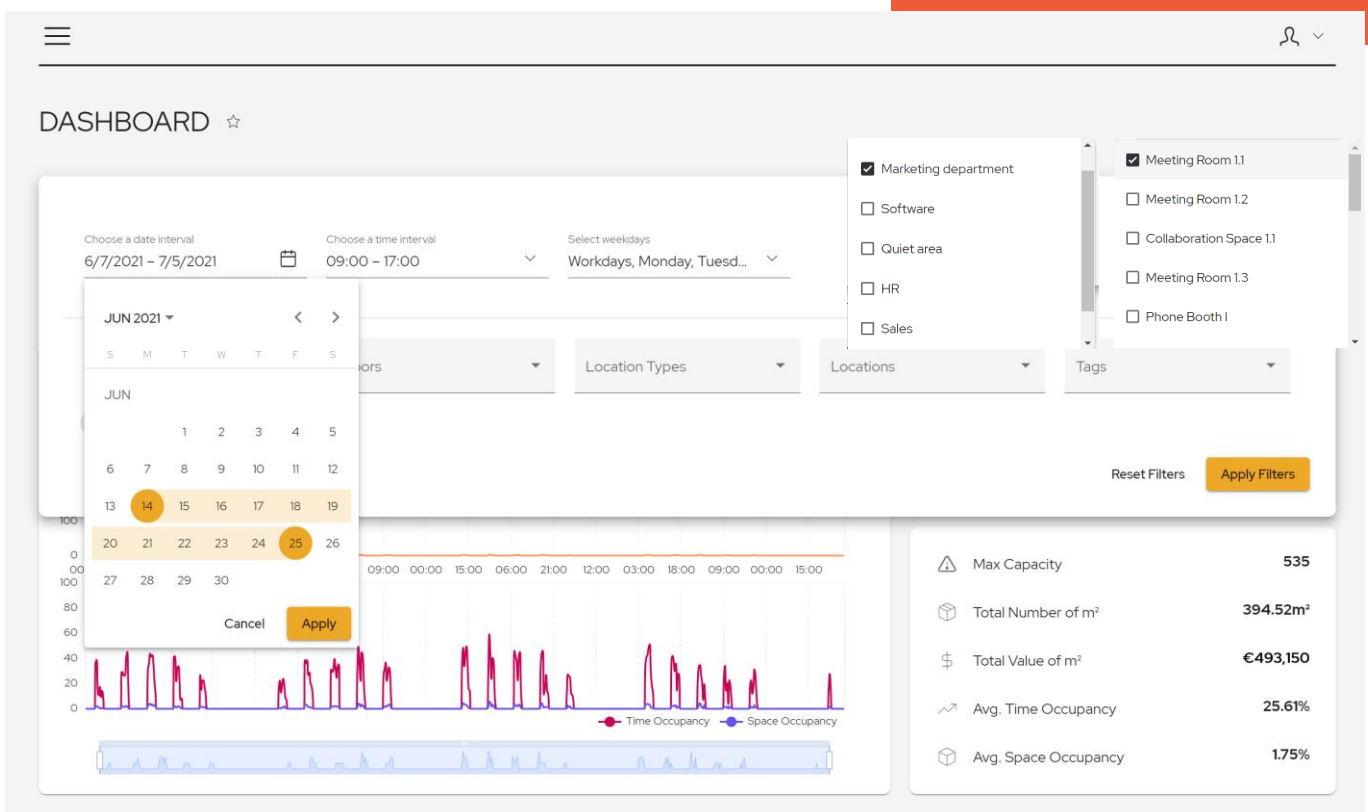
Having access to highly granular and accurate data allows for apt decision-making while removing guesswork.

With Ubiqisense' dashboard, you can tailor your insights across your entire building portfolio, or specifically for selected floors, rooms, or departments.

View and compare spaces to gain a deep understanding of redundant or underutilized rooms, busy areas and times, and the optimization potential of your buildings.

"The analytics dashboard makes it easy to constantly have access to important insight through the data coming from the sensors in the building."

Frederik Tauber,
Chief Operating Officer, Bloxhub



Intelligent offices. Avoiding ghost meetings

What's next

There is a growing urbanization in society, and with occupancy solutions, Bloxhub can create the best possible work environment for its customers and facilitate innovation, sustainable urbanization, and co-creation.

Going forward, technology becomes a vital part in enabling a smarter building and intelligent office environments. As more flexibility is offered to members and visitors, this also falls back on the business itself, resulting in a higher demand for future proof technology.

Making the office intelligent

Ghost meetings and reservations with no-shows will come to an end thanks to Ubiqisense's "automatic check out" feature. The sensors detect and count people and when no-one shows up, the sensors will communicate to the booking system, freeing up the rooms and allowing others to use the facilities.

Same functionality will be used when meetings end earlier than scheduled. This will be done through an integration between the existing booking system and Ubiqisense's API.

[Book a demo](#)

"It's guaranteed that there will never be enough meeting rooms and increasing more floor capacity is simply not an option."

Frederik Tauber,
Chief Operating Officer of Bloxhub

"With Ubiqisense's solution, we gain insights on how and when our spaces are being utilized.

This enables us to adjust and be ahead of our customers' needs while maximizing our spaces as every square meter comes with a cost. "

Frederik Tauber
Chief Operating Officer



About Ubiqisense

Empowering human interaction

Ubiqisense is an innovative data analytics platform combined with discreet sensors of Scandinavian design. Providing granular and highly accurate data, companies get great insights that can help them optimize space utilization, make better decisions, and increase employee productivity.

Ubiqisense provides both real-time and historical data from our cloud-based solution, and as sensor data is completely anonymized, the solution ensures 100% GDPR compliance and privacy.

Ubiqisense has both local and global customers and partners and was founded in 2016.



Our mission

Empowering human interaction

We transform spaces into a living and intelligent environment which stimulates productivity and ultimately shapes the 21st-century workplace.

[Book a demo](#)

