



Chelan-Douglas Health District

200 Valley Mall Parkway, East Wenatchee, WA 98802

Chelan-Douglas Health District Board of Health Regular Meeting Minutes – January 22, 2024

Board Members Present (quorum):

Marc Straub (4)
Kevin Overbay (1)
Sharon Waters (6)
Bindu Nayak (8)
Bill Sullivan (10)

Shon Smith, Vice Chair (2)
Dan Sutton (3)
Marissa Smith (7)
Alma Chacon (9)
Joseph Hunter (11)

Board Members Absent:

Jerrilea Crawford, Chair (5)

Non-Voting Alternate Board Members Present:

Maria Hansen (11)
Carin Smith (9)

Michael Peterson (7)

Staff Present:

Diane Forhan, Operations Director
Mariana Fletcher, Environmental Health Director
Cari Hammond, Community and Family Health Director
Dr. James Wallace, Interim Health Officer
Luke Davies, Health Administrator

Kent Sisson, EPR Director
Kristen Hosey, Deputy Director
Hollie Casey, Clerk of the Board
Peter Williams, CD/Epi Director
Erin McCool, CDHD Attorney

Public Present-

The meeting was held in person and via zoom and phone conferencing with members of the public attending and listening to the meeting.

Meeting-

Chair Marc Straub called the meeting to order at 3:00 PM and requested the Board Clerk to take attendance.

Approval of Agenda- (1:22)

Vice Chair Shon Smith moved to approve the agenda as presented. Kevin Overbay seconded the motion and the motion passed unanimously.

Public Comment – (1:42)

Chair Marc Straub explained that 20 minutes has been set aside for public comment and asked for those present in person and via Zoom who wanted to speak during public comment to identify themselves. Once Chair Straub identified the number of members of the public that wanted to speak, he allotted three minutes to each presenter.

- Laurie Buhler of Douglas County, Darlene Crum of Douglas County, and Lisa Templeton of King County each shared their concerns about the COVID vaccines.

Executive Session: RCW 42.30.110 (1)(i) Pending and Potential Litigation (9:43)

Kevin Overbay moved to go into Executive Session, for no more than 10 minutes, until 3:23. Dan Sutton seconded the motion and the motion passed unanimously.

The Board went into an Executive Session at 3:13 for 10 minutes. The Board came out of the Executive Session at 3:23.

Consent Agenda– (14:35)

- a. Approval of the December 18, 2023 Board Meeting Minutes
- b. Approval of December Payroll in the amount of \$313,964.71
- c. Approval of December Benefits in the amount of \$103,276.83
- d. Approval of Payment of 2023 Vouchers No. 20230841-20230880 in the amount of \$48,340.12 and 2024 Vouchers No. 20240001-20240038 in the amount of \$43,893.95
- e. Approval of the Contract Matrix

Bill Sullivan moved to approve the Consent Agenda with the removal of item e. Contract Matrix, to discuss separately. Joseph Hunter seconded, and the motion passed unanimously. Board discussion followed.

There was some discussion around item e. Contract Matrix, Consolidated Contract CHL31004 Amendment #16 Office of Immunization COVID-19 Vaccine. Marc Straub then moved to approve the Contract Matrix without the Consolidated Contract CHL31004 Amendment #16 Office of Immunization COVID-19 Vaccine, and there was no second.

Board discussion followed around the contract in question and Consolidated Contract CLH31004 Amendment #17 FFY21 CDC COVID-19 PHWFD-LHJ . Luke Davies, Health Administrator, reviewed the contract language for the contract amendments: Consolidated Contract CHL31004 Amendment #16 Office of Immunization COVID-19 Vaccine and Consolidated Contract CLH31004 Amendment #17 FFY21 CDC COVID-19 PHWFD-LHJ. After more Board discussion, Bindu Nyak moved to approve the Contract Matrix as is and Shon Smith seconded the motion. The motion passed with eight in favor of the motion, one opposed (Sullivan), and one abstained (Sutton).

There was Board discussion around receiving the amended contracts in advance of the meetings for Board review, when possible. Marc Straub suggested that the Executive Team explore options for a future process that the Board can review.

New Business- (49:27)

- a. First Quarter Surplus List (Action Item) (49:30)
Diane Forhan, Fiscal Director, reviewed the items on the surplus list and explained that the items that are obsolete and still in used and/or good condition can possibly be posted on Ebay. Other items will most likely go to the landfill or recycling.

Vice Chair Shon Smith moved to approve the First Quarter Surplus List provided on page 15 of the Board packet. Bindu Nayak seconded the motion and the motion passed unanimously.

b. Testing Management MOU for Septic System Installers with Washington Onsite Sewage Association (WOSSA) (51:08)

Luke Davies, Health Administrator, introduced Richmond Petty, the On-Site Septic Supervisor, and explained the proposal of the WOSSA training process to the Board and reviewed the handout given out at the meeting. Board discussion followed, and it was agreed to split this item into two separate motions for clarity.

Kevin Overbay moved to approve adjusting the fee schedule to what was presented to the Board, with elected voting members only. Dan Sutton seconded the motion, and the motion passed unanimously.

Dan Sutton moved to approve the MOU provided in the Board packet, with all Members of the Board voting. Joseph Hunter seconded the motion and the motion passed unanimously.

Reports – (1:10:34)

Health Officer Report (1:10:38)

Interim Health Officer, Dr. James Wallace reviewed the current respiratory illness status with a map of the US. Washington State is currently at the low to moderate level for respiratory related illnesses. Emergency department visits peaked at the end of December and are all down trending at this time for Influenza, COVID, and RSV. Influenza, and RSV numbers are down in comparison to last year's numbers nationwide and locally. In NCW we are seeing a downward trend in Influenza, COVID, and RSV for emergency room visits. We are above our seasonal threshold for RSV and below our seasonal threshold for Influenza. There was a measles outbreak in Clark and Wahkiakum Counties recently, and individuals were in isolation and no infection was spread due to well-coordinated responses that caught the illness early and isolated the individuals very quickly. Working with the CDC, DOH, and other states to investigate the recent Salmonella outbreak that occurred across 22 states in the US to see if there is a link for the multi-state outbreak. There was a reported Salmonella case in each Chelan and Douglas Counties. There was a local case of wound Botulism. Dr. Wallace stated that wound Botulism is incredibly rare. The CDC has only had 206 cases of wound Botulism reported over the last 10 years, however, due to the use of needles for intravenous drug users, this may be an underreported number. Board discussion followed.

Fiscal Report -

Diane Forhan, Operations Director (1:35:38)

Diane Forhan presented an overview of her fiscal and operations report provided in the Board packet.

Community and Family Health --

Carl Hammond, Personal Health Director (1:37:47)

Cari Hammond presented an overview of her report provided in the Board packet.

Health Communications Report --

Kristen Hosey, Deputy Administrator (1:42:38)

Kristen Hosey presented an overview of her report provided in the Board packet.

Environmental Health Report --

Mariana Fletcher, Environmental Health Director (1:51:29)

Mariana Fletcher presented an overview of her report provided in the Board packet.

CD/Epi Report --

Peter Williams, CD/Epi Director (1:55:59)

Peter Williams presented an overview of his report provided in the Board packet.

EPR Report --

Kent Sisson, EPR Director (2:01:58)

Kent Sisson presented an overview of his report provided in the Board packet.

Administrator Report --

Luke Davies, Administrator (2:09:23)

Luke Davies presented an overview of his report provided in the Board packet.

Luke also noted in the meeting that in October the District extended Liz Walker's contract for an additional two months. The District is now in the process of entering into the interlocal operating agreement as well as Chelan County DNR to set up the EPA Grant that the District applied for last year and would like to have that position continue through 2024. The District will have more for the Board in February.

Chair Marc Straub declared the meeting adjourned at 5:35PM.



Marc Straub, Board Chair



Hollie Casey, Clerk of the Board



Chelan-Douglas Health District

200 Valley Mall Parkway, East Wenatchee, WA 98802

Chelan-Douglas Health District Health Officer Update

James Wallace, MD, MPH

January 22nd, 2024

Chelan-Douglas Health Officer Update

Respiratory Illness Activity

- State & regional epidemiology reflects mid-season activity with downward trend
- Hospitalization rates remain higher for COVID than influenza and RSV
- Continued reports of cases & absenteeism for non-COVID/influenza/RSV respiratory illness, public health investigation of severe respiratory illness & notifiable conditions

Measles Outbreak

- 6 cases in Clark County, rapidly identified and isolated

Salmonella Outbreak

- Multi-state outbreak involving charcuterie meats, 2 cases in CDHD

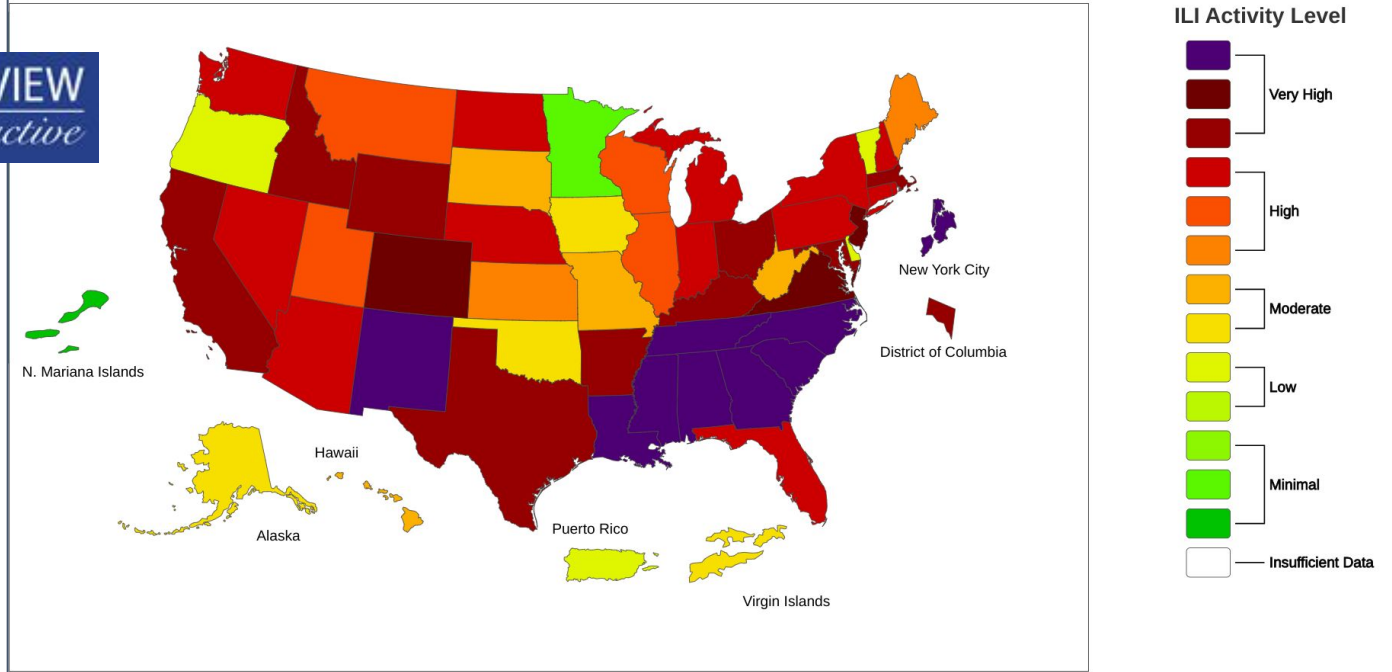
Wound Botulism

- Rapid diagnosis & treatment with activation of state & federal public health systems

Respiratory Disease Activity: National Trends

FLUVIEW
interactive

2023-24 Influenza Season Week 52 ending Dec 30, 2023

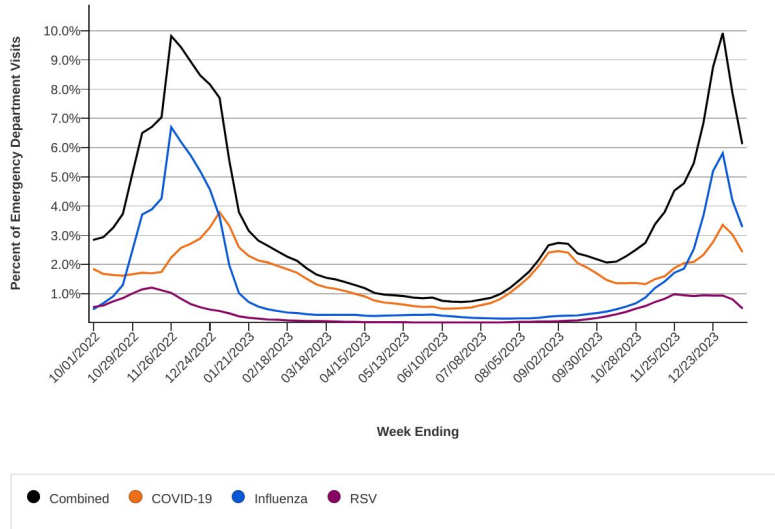


<https://gis.cdc.gov/grasp/fluview/main.html>

Respiratory Disease Activity: National Trends

Emergency Department Visits for Viral Respiratory Illness

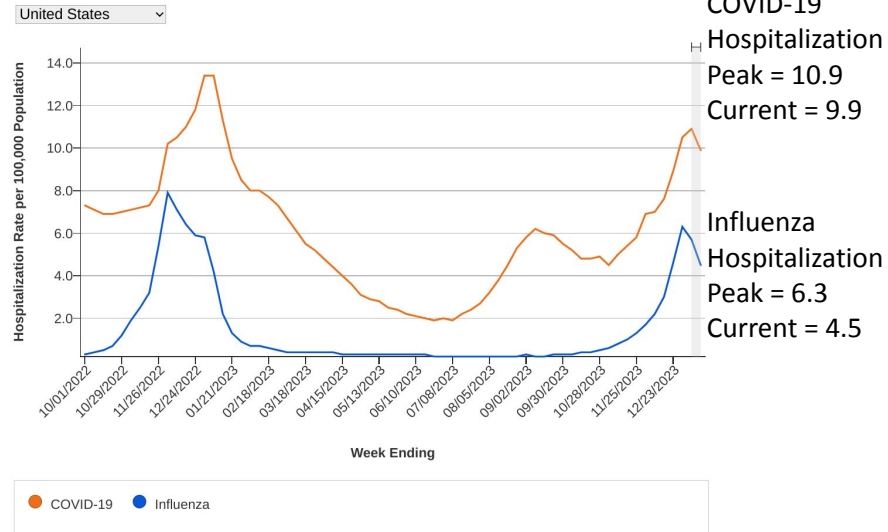
Weekly percent of total emergency department visits associated with COVID-19, influenza, and RSV.



Data presented through: 01/13/2024; Data as of: 01/17/2024

COVID-19 and Influenza Hospitalization Rates

Weekly (7-day total) hospitalization rates reported per 100,000 population. RSV hospitalizations are not included in this dataset (see footnotes). Preliminary data are shaded in gray.



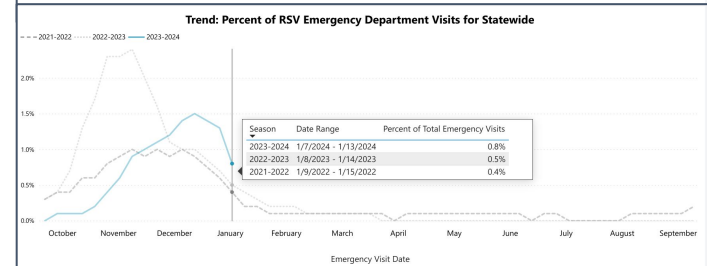
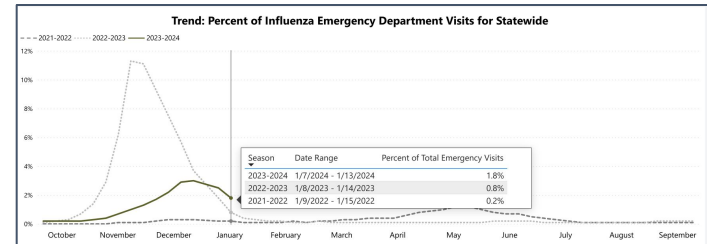
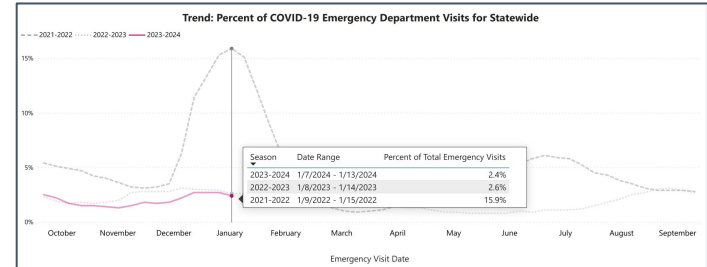
RSV hospitalizations peaked at 3.8 per 100,000, now at 1.8

Respiratory Disease Activity: Washington

WA Statewide Respiratory Illness Epi

- COVID-19, Influenza, RSV *downtrending*
 - COVID-19 = 2.4% of ED visits
 - Influenza = 1.8% of ED visits
 - RSV = 0.8% of ED visits
- Influenza & RSV remain above historic state seasonal thresholds
 - COVID-19 threshold = 4%
 - Influenza threshold = 1.2%
 - RSV threshold = 0.3%

<https://doh.wa.gov/data-and-statistical-reports/diseases-and-chronic-conditions/communicable-disease-surveillance-data/respiratory-illness-data-dashboard>

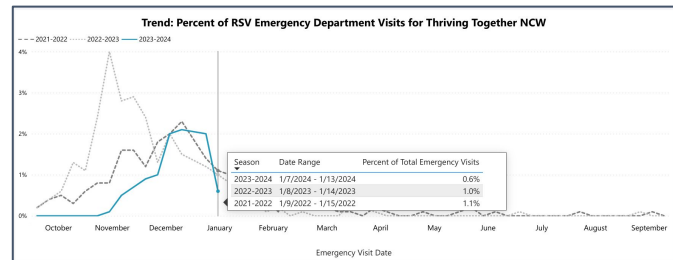
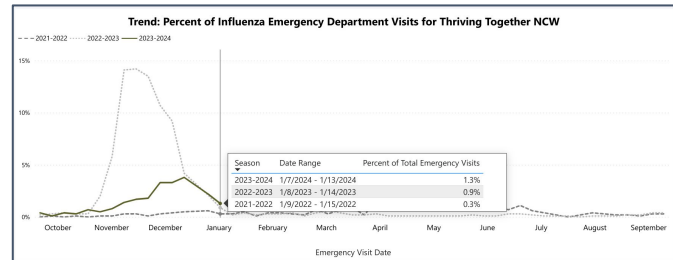
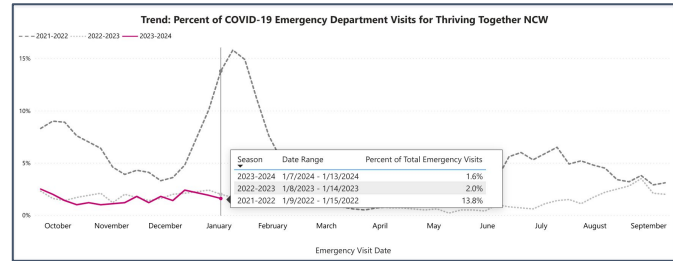


Respiratory Disease Activity: North Central WA

NCW Respiratory Illness Epi

- **COVID-19** = 1.6% of ED visits
 - Seasonal threshold = 4%
- **Influenza** = 1.3% of ED visits
 - Seasonal threshold = 4%
- **RSV** = 0.6% of ED visits
 - Seasonal threshold = 0.5%
- COVID-19 wastewater surveillance downtrending in Wenatchee & Brewster
- Healthcare & schools reporting continued absenteeism due to respiratory illness
- Investigation & response conducted/ongoing for other severe respiratory illnesses (pertussis, varicella, invasive streptococcal infection)

<https://doh.wa.gov/data-and-statistical-reports/diseases-and-chronic-conditions/communicable-disease-surveillance-data/respiratory-illness-data-dashboard>

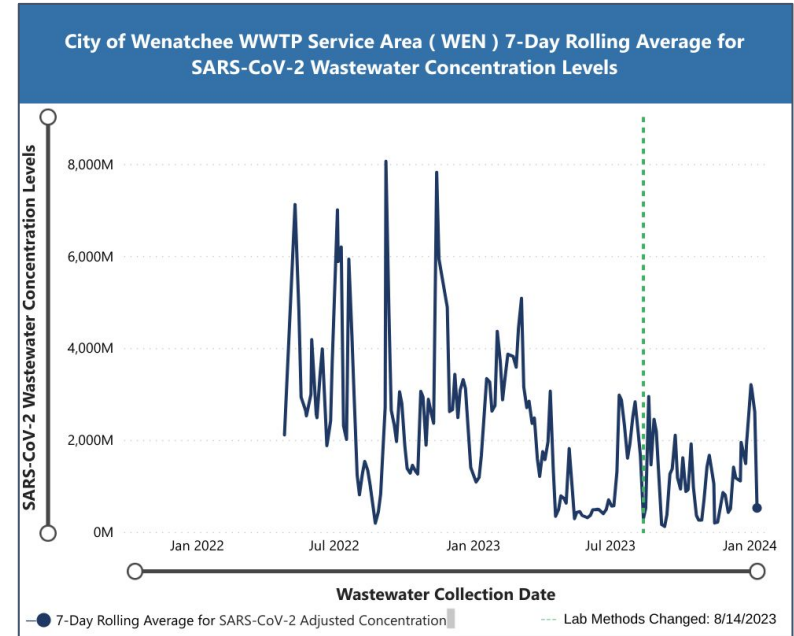


Respiratory Disease Activity: North Central WA

NCW Respiratory Illness Epi

- **COVID-19** = 1.6% of ED visits
 - Seasonal threshold = 4%
- **Influenza** = 1.3% of ED visits
 - Seasonal threshold = 4%
- **RSV** = 0.6% of ED visits
 - Seasonal threshold = 0.5%
- COVID-19 wastewater surveillance downtrending in Wenatchee & Brewster
- Healthcare & schools reporting continued absenteeism due to respiratory illness
- Investigation & response conducted/ongoing for other severe respiratory illnesses (pertussis, H. flu, varicella, invasive streptococcal infection)

<https://doh.wa.gov/data-and-statistical-reports/diseases-and-chronic-conditions/communicable-disease-surveillance-data/respiratory-illness-data-dashboard>



Measles Outbreak - Clark County

January 6, 2004

- 6 cases identified in Clark and Wahkiakum Counties with travel history
- Individuals quickly isolated and caused no known exposure to others
- Example of well-coordinated public health and healthcare response

Measles Infection

- Mild-moderate fever, cough, coryza, conjunctivitis
- Koplik spots then rash from face → body
- Complications occur in 30% or more, ranging from diarrhea to pneumonia, encephalitis (may be delayed) and death
- Higher risk = extremes of age, pregnancy, immunocompromised

Public Health Outbreak Response & Prevention Measures

- Immediate notification required
- Facilitate lab testing
- Case investigation, contact tracing, identification of unvaccinated contacts
- Ensure isolation of cases
- Notification and surveillance of individuals and locations of transmission
- Incident management, communication and collaboration with healthcare & DOH

<https://www.cdc.gov/mmwr/volumes/68/wr/mm6819a5.htm>

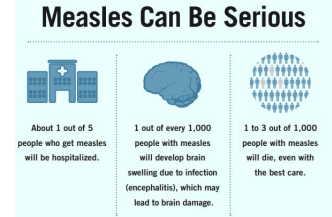
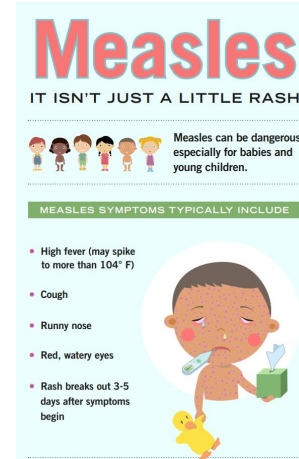
<https://www.cdc.gov/measles/index.html>



Public Health
Prevent. Promote. Protect.

Region 4 Public Health
Clark, Cowlitz, Skamania, Wahkiakum
counties, and Cowlitz Tribe

<https://clark.wa.gov/sites/default/files/media/document/2024-01/2024-01-06%20measles%20cases%20regional.pdf>



Watch for measles symptoms:

- Problems**
- Mild to moderate fever
 - Cough
 - Coryza (runny nose)
 - Conjunctivitis
- Rash onset**
- First spots, often as high as 104° to 105° F
 - Red, maculopapular rash that may become confluent—typically starts at hairline, then face, then spreads quickly down body
 - Koplik's spots (tiny blue/white spots on the bright red back ground of the buccal mucosa) may be present
- 

Suspect measles if the patient has:

- Fever and rash
 - Traveled or had contact with international visitors in the past 2 weeks
 - Had contact with a person with measles or Measles outbreak
- Note: A history of 5 days of MMWR vaccine does not exclude a measles diagnosis.

If you suspect measles:

- Start airborne infection control precautions immediately. Mask and isolate patient (negative pressure room, if available).
- Only permit staff immune to measles to be near the patient.
- Call your local health department while the patient is still present to discuss testing for measles.
- Safeguard other facilities; ensure airborne infection control precautions before referring patients.
- Disinfect any non-regulated exam room for at least 2 hours after a suspected measles patient has left the room.

www.doh.wa.gov/immunization

Salmonella Multi-state Outbreak

2024 Salmonella Outbreak

WA DOH, CDHD working with state & federal agencies on a multi-state salmonella outbreak tied to charcuterie meats from Sam's Club and Costco

- 47 people infected from 22 states, 10 hospitalizations
- Bussetto brand charcuterie sampler (Sam's Club)
- Fratelli Beretta Antipasto (Costco)
 - black pepper-coated dry salami, Italian dry salami, dry coppa and prosciutto
- WA: 1 King County, 2 Spokane, 1 Chelan, 1 Douglas
- Costco recalled meats, notified customers
- CDHD, DOH published Health Advisories

Salmonella Infection

- Diarrhea and fever higher than 102F
- Diarrhea for over 3 days that is not improving
- Bloody diarrhea
- Vomiting with signs of dehydration

Public Advisory

- Discard impacted products and wash surfaces with hot soapy water
- Contact your healthcare provider for symptoms of salmonella
- Retailers should suspend sales and discard affected products



Costco members may return Fratelli Beretta Antipasto Gran Beretta product with a “Best By” date prior to June 13th 2024 for a full refund.

<https://doh.wa.gov/you-and-your-family/illness-and-disease-z/foodborne-illness/outbreaks/2024-salmonella-charcuterie-meats>

Wound Botulism

Botulism

- *Clostridium botulinum* spores lie dormant in soil
- Spores activated, bacteria replicate in live tissue and release neurotoxin
- Neurotoxin attacks nerve synapses and results in paralysis

Clinical Impact

- Incubation period 12-36hrs of food ingestion, 10-14d after skin exposure
- Initial symptoms include droopy eyelids, blurred/double vision, difficulty swallowing, neck and limb weakness
- Progression to difficulty breathing, respiratory failure and paralysis in >50% of cases
- Rapid treatment with antitoxin results in improvement over 2-6 months

Botulism Epidemiology

- Annual cases in WA include:
 - 0-2 reports of foodborne botulism
 - 0-6 reports of infant botulism
 - 0-2 reports of wound botulism
- CDC reports 206 cases of wound botulism from 2010-2019, likely under-reported

Public Health Response

- Support for healthcare partners' rapid diagnosis and treatment
- Case investigation, contact tracing, identification of source/outbreak
- Public awareness of cases, sources of contamination & outbreak containment
- Emergency response for outbreaks and bioterrorism response

WARNING:
INJECTED DRUGS
MAY BE CONTAMINATED



DRUGS CONTAMINATED WITH BOTULISM HAVE CAUSED SERIOUS ILLNESS AND DEATH IN OUR AREA.

 **Muscling and skin-popping have the GREATEST RISK**

 **NO WAY TO KNOW OR TEST which drugs are bad**

 **Cooking DOES NOT KILL IT**

IF YOU HAVE THESE SYMPTOMS, GO TO A HOSPITAL.

 **Weakness and drooping eyelids**

 **Blurred or double vision**

 **Extreme dry mouth and sore throat**

 **Trouble breathing, intense shortness of breath**

These symptoms can start several days to several weeks after injecting contaminated drugs. You may or may not notice an abscess. If not treated quickly, botulism can cause paralysis, shut down your breathing and cause death. If it is caught early, it can be treated.

If you have any of the symptoms, **go the nearest EMERGENCY ROOM** immediately. Take this flyer so you will be seen quickly.



If you want to quit and need help,
Call WA Recovery Help Line 866-789-1511
<https://www.warecoveryhelpline.org>

Graphics and content based on LA County.
<http://publichealth.lacounty.gov/Adm/Docs/BotWarningPoster.pdf>

Chelan-Douglas Health Officer Update

Respiratory Illness Activity

- State & regional epidemiology reflects mid-season activity with downward trend
- Hospitalization rates remain higher for COVID than influenza and RSV
- Continued reports of cases & absenteeism for non-COVID/influenza/RSV respiratory illness, public health investigation of severe respiratory illness & notifiable conditions

Measles Outbreak

- 6 cases in Clark County, rapidly identified and isolated

Salmonella Outbreak

- Multi-state outbreak involving charcuterie meats, 2 cases in CDHD

Wound Botulism

- Rapid diagnosis & treatment with activation of state & federal public health systems