

CHELAN-DOUGLAS HEALTH DISTRICT



2018 ANNUAL REPORT



Chelan–Douglas Health District



*To protect and improve the health of individuals
and communities in Chelan and Douglas
Counties through the promotion of health and the
prevention of disease and injury.*



TABLE OF CONTENTS

Strategic Plan.....	1
Board of Health.....	3
2018 Organizational Chart.....	4
What is Public Health?.....	5
Personal Health	
Communicable Diseases.....	6
Sexual Transmitted Diseases.....	7
Immunizations.....	8
CSHCN.....	9
ABCD.....	10
WIC.....	11
Vital Statistics.....	12
Public Health Emergency Preparedness & Response.....	13
Environmental Health	
Food Safety.....	14
Onsite Septic Systems and Land Development.....	15
Solid and Hazardous Waste.....	16
Drinking Water.....	17
Water Recreation.....	17
Community Outreach.....	18
Agency Funding.....	19
Social Media.....	20

STRATEGIC PLAN

Strategic Plan – Chelan-Douglas Health District

Approved by Board of Health on March 18, 2019

Scope of This Plan

Because this is an internal strategic plan for our organization, rather than a community health improvement plan, it focuses on our organization and its needs. Strategic Initiatives are meant to address the five years following their adoption by the Board of Health.

Vision

Chelan-Douglas Health District makes optimal use of available resources and partnerships to provide high quality public health services in Chelan and Douglas Counties. Its program priorities emphasize the foundational public health functions basic to public safety in any community.

Mission

To protect and improve the health of individuals and communities in Chelan and Douglas Counties through the promotion of health and the prevention of disease and injury.

We Value

Prevention: We believe that prevention is the most effective way to protect our community from disease and injury.

Collaboration: Community partnerships produce cost effective health outcomes by bringing people, resources and organizations together.

Population-based services: We make data-driven decisions and deliver science-based programs, knowing that the provision of population-based services is the defining responsibility of public health.

Equity: We believe everyone in our community deserves an equal opportunity for a healthy life.

Community Service and Accountability: As vigilant stewards of the public's trust, we provide efficient services that are responsive and accountable to the community and its elected representatives.

Improvement: We continuously improve the quality of our services and systems to better serve our community through a system of benchmarks and program evaluation.

Education: Education is a key tool in achieving all public health objectives.

STRATEGIC PLAN

Strategic Initiatives 2019-2023

1. Participate actively in efforts to establish a system of sustainable funding for Foundational Public Health Services.
 - a. Participate at the state level through WSALPHO and WSAC.
 - b. Consider the feasibility of proposals for city funding of specific public health services.
2. Maintain financial stability, the facilities and the openness of the Health District.
 - a. Maintain year-to-year cash carryover sufficient to assure financial stability.
 - b. Maintain and improve Health District facilities.
 - c. Maintain the high level of fiscal transparency achieved in the Health District by continuing to make detailed financial statements available to staff, management and any interested members of the public on a monthly and quarterly basis.
3. Foster a sustainable and skilled public health workforce.
 - a. Attempt to assure that salaries and benefits keep pace with those at LHJs in similar jurisdictions in the state, and review health benefits especially with regard to family members and options such as VIBA plans.
 - b. Support continuing education experiences for staff.
 - c. Develop desk manuals for all appropriate positions and store them on a shared network drive.
 - d. Plan for the expected retirement of some key staff members over the next few years to assure an effective transition minimizing the loss of specialized knowledge.
4. Improve the visibility of public health in the community and especially among community leaders.
 - a. Maintain the Health District web site and optimize educational content.
 - b. Regularly provide presentations on public health to service organizations, city councils, and similar venues which include community and private sector leaders.
 - c. Expand use of social media to disseminate public health messages.
5. Maintain effective partnerships through active participation in local coalitions of health care providers, social service providers and emergency response partners. Some of these are standing coalitions but we also participate in *ad hoc* groups involving special or emergent circumstances.
6. When interacting with individuals and organizations regulated by the Health District, maintain a helpful, educational and respectful approach, resorting to penalties only when other approaches have failed to achieve results.
7. The Health District will acquire, maintain and use up to date digital technology and provide sufficient staff training and technical support to assure its effective use.
 - a. The Health District will, as much as possible, conduct its business on-line.
 - b. The Health District will implement commercially supported Environmental Health software.
 - c. Health district computing equipment, software and infrastructure will remain current with established industry standards.
8. Health District managers will continue to provide accurate and complete information to the Board of Health and to be responsive to the Board's governance and leadership.
9. Future program funding opportunities will be evaluated for their priority in relation to foundational public health services and for sustainability.

BOARD OF HEALTH

Doug England, Chair
Chelan County Commissioner

Jill Thomspen, Vice Chair
Waterville City Council Member

Kevin Overbay
Chelan County Commissioner

Marc Straub
Douglas County Commissioner

Dan Sutton
Douglas County Commissioner

Keith Huffaker
Wenatchee City Council

John Sterk
East Wenatchee City Council Member

John R. Alt II
Entiat City Mayor

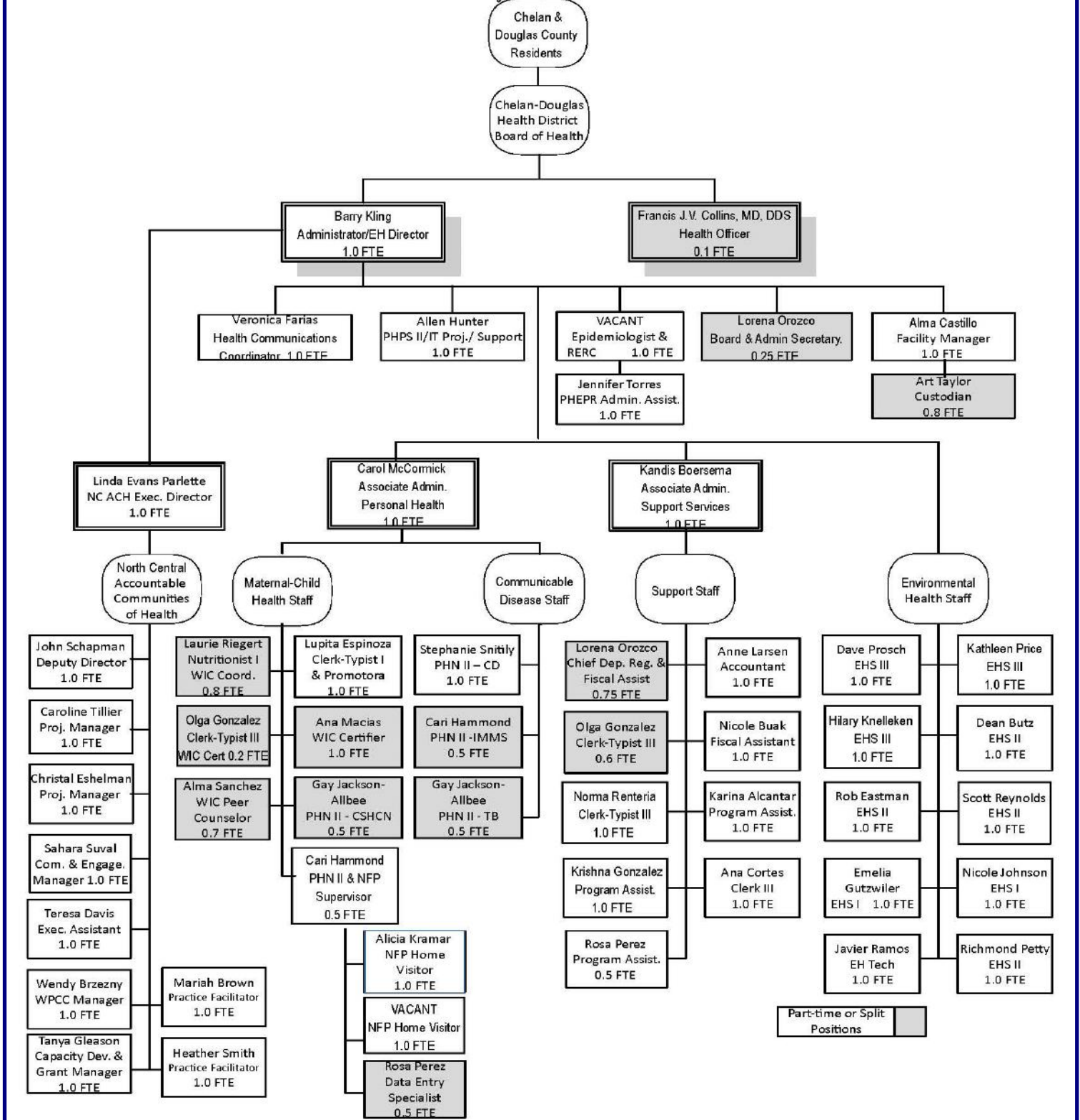
Francis J. V. Collins, MD, DDS
Health Officer

Barry Kling, MSPH
Administrator

ORGANIZATIONAL CHART

Chelan-Douglas Health District 2019 Organization Chart

May 29, 2019



WHAT IS PUBLIC HEALTH?

Public Health is an *essential* agency to any community, just like fire departments and law enforcement. Local, state, and federal funds help support public health departments. Public Health consist of a group of professionals dedicated to protecting and improving the health of individuals and their communities. This work is achieved by promoting healthy lifestyles, researching disease and injury prevention, and responding to contagious outbreaks and natural disasters.

Examples of Public Health services include:

- Controlling tuberculosis and other contagious diseases;
- Keeping food safe through restaurant inspections;
- Protecting at-risk children through public health nursing visits
- Provide supplemental foods for Women, Infants, and Children (WIC);
- Disease outbreak investigations;
- Safe landfills to protect air and water;
- Safe septic systems to prevent disease and protect drinking groundwater;
- Resolving problems with illegal dumps and other solid waste issues; and
- Preparedness for health emergencies such as pandemic influenza and wildfires



PERSONAL HEALTH

Communicable Diseases

Reported Condition	2016	2017	2018
Campylobacter	17	20	20
Carbapenem-Resistant Enterobacteriaceae (CRE)	0	0	0
Coccidioidomycosis	3	1	1
E. Coli	1	2	6
Giardia	16	8	9
Hemophilus Influenzae Type B (Hib)	0	1	1
Hepatitis A	0	0	0
Hepatitis B (acute)	0	1	0
Hepatitis B (chronic)	3	3	11
Hepatitis C (chronic)	60	88	56
Infant Botulism	0	0	0
Influenza Death	1	6	5
Legionella	3	1	0
Listeria	1	0	0
Malaria	0	0	0
Neonatal Herpes Simplex	0	0	0
Pertussis	1	7	24
Rabies Prophylaxis	11	4	27
Salmonella	8	5	9
Shigella	2	3	5
Tuberculosis	3	3	0
Vibriosis	1	0	1
West Nile Virus	0	0	0
Wound Botulism	0	0	0
Zika	1	0	0
Total	132	153	175

The purpose of notifiable condition reporting is to provide the information necessary for officials to protect the public's health by tracking communicable diseases and other conditions. Based on these reports, public health officials take protective steps, such as verifying treatment, securing preventive therapies for certain individuals who came into contact with infectious agents, investigating outbreaks, and removing harmful health exposures. Public health workers also use the data collected during investigations to assess broader patterns including trends and geographic clustering. By analyzing the broader picture, public health is able to take appropriate actions, including outbreak investigation, redirection of program activities, and policy development.

Caution!
Watch for Bats!



There was a total of 27 rabid bats during the 2018 "bat season"

PERSONAL HEALTH

Communicable Diseases — Sexual Transmitted Diseases

Sexually Transmitted Diseases (STDs) are the most commonly reported diseases in Chelan and Douglas Counties. Many are curable, others are treatable, **all are preventable**.

Most people with STDs don't have obvious symptoms, but without treatment they can spread disease and possibly develop serious complications. Anyone under the age of 25 and sexually active should get tested annually. At any age, if you think you may have been exposed to a sexually transmitted disease, you and your sex partner(s) should visit a health care provider for testing.

STD	2016	2017	2018
Chlamydia	410	439	475
Herpes Simplex Virus (HSV)	9	19	13
Gonorrhea	52	44	71
Lymphogranuloma Venereum (LGV)	0	0	0
Syphilis	10	13	8
Human Immunodeficiency Virus (HIV)	8	2	4
Total	489	517	571

Benefits TODAY from the **HPV Vaccine**

In just 5 - 6 years after HPV vaccination became available, studies found...

- 64% DROP** in cancer-causing HPV Infections in girls age 14 - 19
- 47% LOWER** risk of Cervical Pre-Cancer
- 61% DROP** in treatment of Genital Warts

But rates of HPV vaccination in U.S. lag behind other countries

- United States: 38%
- Australia: 71%

Get Kids Vaccinated

More info: cdc.gov/hpv, cancernewsincontext.org

© 2014 Bristol-Myers Squibb

TALK

Talk openly about STDs with your partners & healthcare providers.

TEST

Get tested. It's the only way to know if you have an STD.

TREAT

If you have an STD, work with your provider to get the right medicine.

PERSONAL HEALTH

Immunizations

Immunization Activity by CDHD	2016	2017	2018
Flu Vaccines Given to Children	60	52	51
Flu Vaccines Given to Adults	262	225	192
Total Flu Vaccines Given	322	277	243

The immunization program works to achieve high immunization rates for our adolescent and adult populations, educate parents about the risks associated with not vaccinating, and assures access to immunizations for our underserved populations (i.e.. people residing in rural areas, underinsured or uninsured people). We continue to work to increase the uptake of new and underused vaccines

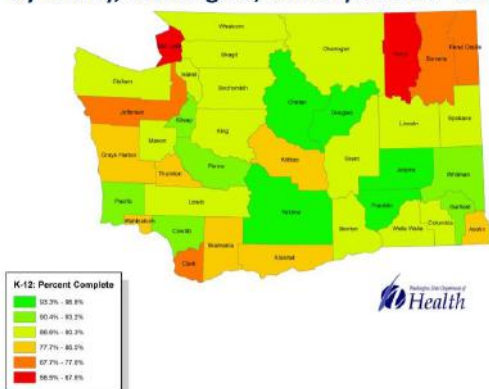
for adolescents, offer immunization services to the underserved through outreach clinics, and improve adult immunization rates by sharing effective immunization strategies with providers caring for adults and children.

95% of students in Chelan & Douglas Counties are *completely* immunized for childhood preventable diseases!

1.9 % of students in Douglas County have immunization exemptions (medical, personal, religious)

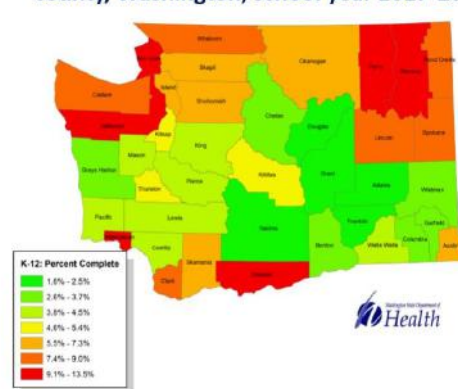
3.1% of students in Chelan County have immunization exemptions (medical, personal, religious)

Students in grades K – 12 complete for required immunizations by county, Washington, school year 2017-2018



Data source: WA State Department of Health, Office of Immunization and Child Profile, 2017-2018 school data. Created March 2018.

Students in grades K-12 with school immunization exemptions by county, Washington, school year 2017-2018



Data source: WA State Department of Health, Office of Immunization and Child Profile, 2017-2018 school data. Created March 2018.

PERSONAL HEALTH

Children with Special Health Care Needs (CSHCN)

CSHCN provides public health nurse visits for children (birth to 18 years) who have physical, behavioral or emotional conditions that require services beyond those required by children in general. Examples include developmental delays, cancer, down’s syndrome, and premature birth. A public health nurse and/or community health worker facilitates access to health care needs, provides care coordination, supports family centered care, teaches advocacy skills, and promotes the coordination of care across systems.

CSHCN Activities	2016	2017	2018
New Referrals Received	32	41	29
Home / Office Visits	84	122	146
New Clients	29	39	23
Total Clients Served	86	99	198
Other Contacts Made (phone, email, text, fax, letter)	1,054	1,198	776
Referrals Made to Other Agencies	100	127	66



A total of 198 clients were served by CSHCN staff in 2018! That’s 99 clients more than the previous year!



LEFT: CDHD outreach at the 2018 Autism Awareness 5k Run in Wenatchee. The table booth included CSHCN program resources and ABCD toothbrushes.

PERSONAL HEALTH

Access to Baby & Child Dentistry (ABCD)

ABCD focuses on preventive and restorative dental care for Medicaid-eligible children from birth to age six, with emphasis on enrollment by age one. It is based upon the premise that starting dental visits early will yield positive behaviors by both parents and children, thereby helping to control the caries process and reduce the need for costly future restorative work.



ABCD Activities	2016	2017	2018
Children Enrolled in ABCD	101	81	100
ABCD Dentists	10	10	12
New ABCD Dentists	1	1	3

TOP: Lupita Espinoza, Promotora de Salud, is the Program Coordinator for CSHCN & ABCD.

RIGHT: Rosa Perez, Program Assistant, at the 2018 Kid's Fest in Wenatchee



65% of new children enrolled in ABCD program due to outreach efforts in 2018!

PERSONAL HEALTH

WIC—Women, Infants, and Children



WIC is a supplemental nutritional program for income eligible families and also supports successful, long-term breastfeeding. Almost half of all babies in our state receive WIC. WIC improves the health of mothers and children through nutrition education, breastfeeding support, monthly checks for food, and health screenings and referrals.

WIC foods meet the special nutritional needs of pregnant breastfeeding and postpartum moms, infants, and children up to 5 years old. WIC provides a wide variety of healthy foods that include: wholegrains, breakfast cereals fortified with iron and low in sugar, fresh fruits and vegetables, low sodium and low fat choices, a variety of protein foods such as eggs, dried peas and beans, peanut butter, and tofu, and good sources of calcium, such as, milk, cheese, and fortified soy beverages.



Carol McCormick, Personal Health Director and Laurie Riegert, WIC Coordinator, at a WIC booth during Farmer's Market.

Chelan-Douglas Health District WIC program provided \$775,459 in 2018.

Chelan-Douglas Health District WIC — 2018

Total Women Participating	317
% of Women with High Nutrition Risk	45.1%
Breastfeeding > 6 Months	29.6%
Breastfeeding Initiation Rate	91.1 %
Total Infants/Children Participating	820
% of Children with High Nutrition Risk	43.5%
Nutrition Education Sessions	3015
Referrals	4,552
Total Clients Participating	1,137

Total Food Dollars Redeemed in 2018 for Fresh Fruits and Vegetables — \$41,780—

Total Food Dollars Redeemed in 2018 for WIC Farmers Market — \$2,516—

VITAL STATISTICS

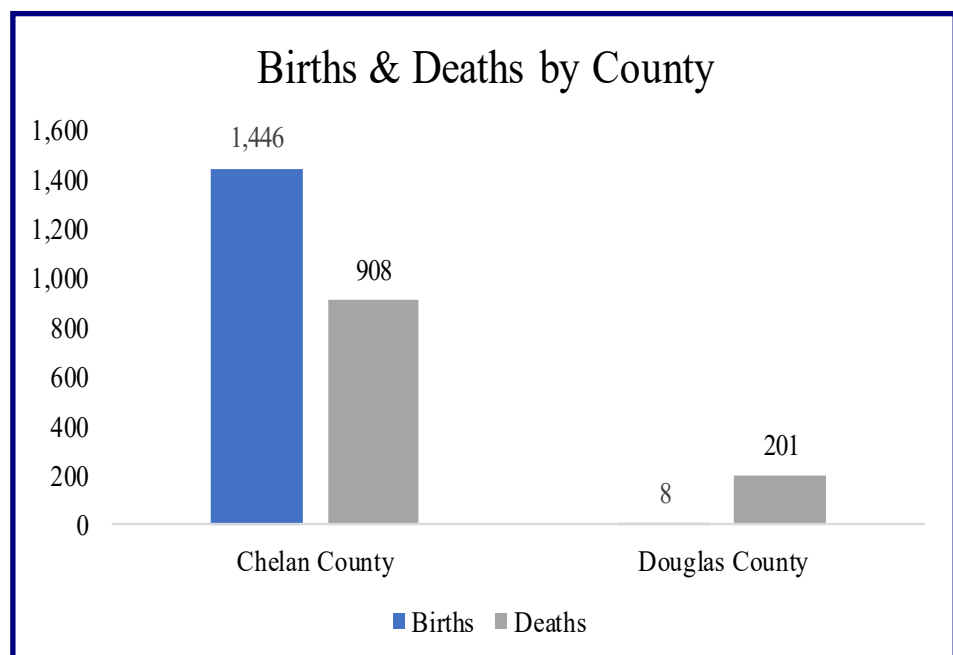
Birth & Death Certificates

Chelan-Douglas Health District issues Washington State birth and death certificates, certifies death records, and files affidavit for corrections with the Washington State Department of Health. Vital statistics are the compilation and analysis of information collected from vital event records reported in Chelan and Douglas counties and the entire state. Some of the most important information about the health of the population comes from vital records, such as leading causes of death, low birth weight babies, and mother's access to prenatal care. Vital records data are used throughout the state and nation for analysis of health trends, program planning, and policy development.

Birth & Death Certificates	2016	2017	2018
Birth certificates issued	3972	3708	3953
Death certificates issued	4860	5149	4628
Total	8832	8857	8581

1,454 Births in Both Counties in 2018

1,109 Deaths in Both Counties in 2018



EMERGENCY PREPAREDNESS

Public Health Emergency Preparedness and Response

Nearly all natural disasters and emergencies affect the health of a community, from air quality during wildfires, food safety during power outages, to a pandemic flu outbreak. Our Public Health Emergency Preparedness and Response program ensures that we are properly prepared with plans, procedures, training, supplies, and communication systems to respond to and recover from public health emergencies.

Regional Emergency and Disaster Healthcare Coalition 2018-2019 Leadership

Travis Nichols
Coalition Director

Hannah Cylkowski
Information Management Coordinator

Carolyn Cartwright
Planning Coordinator

Barry Kling
Emergency Response Coordinator

CDHD established over 32 mask distribution locations throughout Chelan and Douglas County during the 2018 fire season, including a mask site at the Manson Post Office (pictured at the right).



Over 58,000 masks distributed throughout Chelan and Douglas County during the 2018 fire season.

Preparedness Activities	2016	2017	2018
# of after hours calls for 24/7 system for the public and doctors	61	46	98
# of public health alerts sent to partners and providers	124	212	201
# of ICS activations for a public health event	0	0	0
# of times we activated the ICS system for exercises	1	0	1



CDHD staff helped with a massive mask delivery by WA Department of Health. Over 600 cases of masks were delivered during the 2018 fire season!

ENVIRONMENTAL HEALTH

Food Safety

Food safety is an important public health priority. The Centers for Disease Control and Prevention estimates that each year roughly 1 in 6 Americans (or 48 million people) get sick, 128,000 are hospitalized, and 3,000 die of foodborne diseases. Foodborne illness is a common public health problem. Our Food Safety Program works to ensure that food vendors are permitted, food workers are educated, and that food is properly and safely handled, prepared, and served, to prevent illnesses from food.

In 2018, our food safety program specialists conducted a total of 1,185 restaurant inspections throughout both Chelan and Douglas County. A total of 34 food safety complaints were also investigated in 2018.



Food Safety Program Specialists Emelia and Nicole, along with Program Supervisor, Rob, ready to conduct food inspections at the 2018 Apple Blossom Food Fair.

6,415 Food workers were educated on proper food handling and received their food worker safety cards.

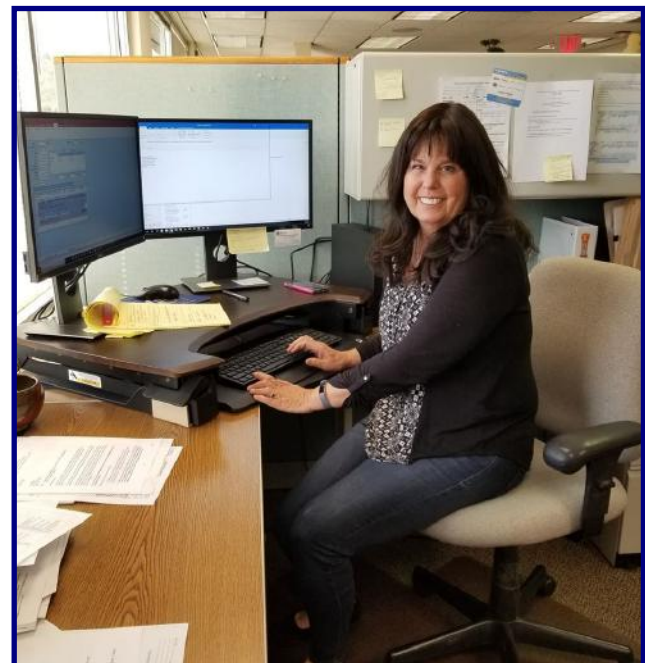
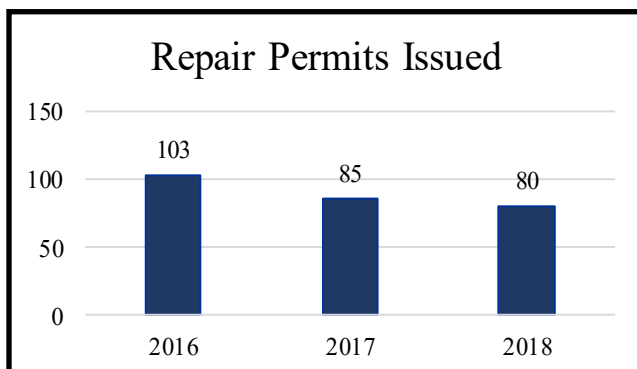
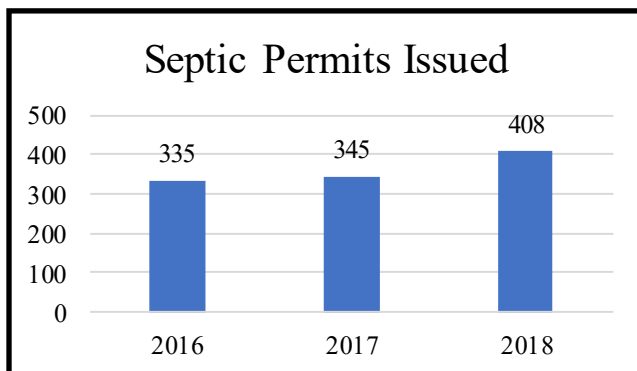
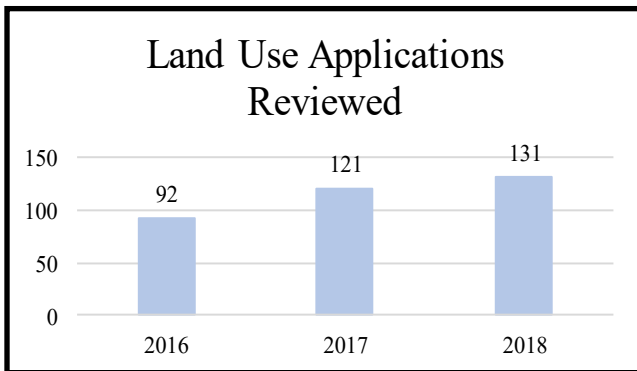
Food Safety Activities	2016	2017	2018
Restaurants Permitted Annually	727	739	780
Restaurant Inspections Conducted	1083	1055	1,185
Temporary Food Service Events Permitted	428	425	450
Temporary food Service Inspections	333	361	379
# of restaurants with unsatisfactory inspections >35 critical points.	31	31	22
Food Safety Complaints Investigated	44	70	34

ENVIRONMENTAL HEALTH

On-Site Septic Systems and Land Development

The purpose of this program is to protect public health and the environment by ensuring proper treatment and disposal of waste water to protect our drinking water and the environment. We issue permits, inspect installed systems, and investigate complaints associated with on-site sewage systems. Other activities include site evaluations, plan preparation, review of proposed land developments, and licensing industry professionals such as septic tank pumpers, on-site septic installers, and operation and maintenance providers.

On-Site Septic Systems and Land Development	2016	2017	2018
New On-site Septic System Permits Issued	335	345	408
Repair On-site Septic System Permits Issued	103	85	80
Land Use Applications Reviewed	92	121	131
Septic Industry Professionals Licensed	122	120	117



Kathleen Price oversees CDHD's On-site, Land Development and Water Recreation Programs

ENVIRONMENTAL HEALTH

Solid & Hazardous Waste

Solid & Hazardous Waste	2016	2017	2018
Number of Solid Waste Complaints Received	84	76	62
Solid Waste Complaints Investigated & Resolved	73	76	50
Solid Waste Facility Inspections Conducted	64	91	53

Improper waste disposal has the potential to attract disease carrying vermin and adversely impact air and water quality. To protect public health, staff members investigate complaints concerning solid waste accumulations and illegal dumping, regulate the operation of solid waste facilities review design plans for proposed solid waste facilities, and monitor the maintenance of closed landfills.

CDHD Permitted 13 Solid Waste Facilities & Monitored 4 Closed Landfills in 2018.



Municipal Solid Waste Facility Inspection

Inert Solid Waste Facility Inspection



ENVIRONMENTAL HEALTH

Drinking Water

Contaminated drinking water is a known cause of serious waterborne illnesses. To protect public health, staff members review development proposals for the presence of approved water sources, conduct site evaluations for new water systems, and monitor water quality data for operating water systems.

**95 New Private Water Sources
Evaluated in 2018**

**10 New Public Water Systems
Reviewed in 2018**

**27 Group A Sanitary Surveys
Conducted in 2018**

Boil Water Advisories

Year	No. of Advisories	People Affected
2016	2	80
2017	4	1631
2018	0	0



Water Recreation

Pools, spas, and water parks are a potential source for waterborne illnesses, unintentional injuries, and accidental drowning. To protect public health, staff members review plans for proposed facilities, investigate complaints, and conduct health and safety inspections on all permitted facilities throughout Chelan and Douglas County.



**190 Water Recreational Facilities
Permitted in 2018**

**146 Water Recreational
Inspections Conducted in 2018**

ENVIRONMENTAL HEALTH

Community Outreach

The outreach committee is dedicated in promoting public health throughout Chelan and Douglas County. The committee is made up of employees from various programs to ensure all aspects of public health are represented including: healthy lifestyles, disease and injury prevention, and emergency preparedness.



Lupita, Rosa, and Krishna at the Columbia Valley Community Health Back to School Health Fair



CDHD booth at the Lake Chelan Back to School Fair



Jennifer and Lupita at WIC Farmer's Market



Javier at a Family Resource Fair in Wenatchee.

2018 Goal	No. of Events Attended	Event Location(s)
Attend at least 12 events throughout both counties	24 events attended throughout both Counties & one event took place in Grant County	Wenatchee (15) East Wenatchee (3) Leavenworth (1) Cashmere (2) Entiat (1) Chelan (1) Coulee City (1)



Alma at the Latina Family Health Fair



Emelia at the Fiestas de los Santos Apostoles



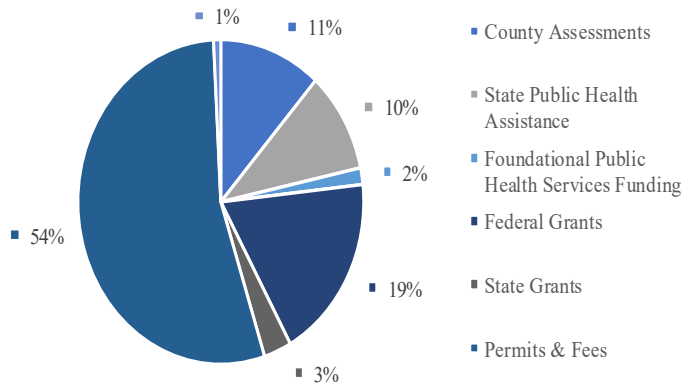
Karina and Lupita at the Survive and Thrive Event

FUNDING

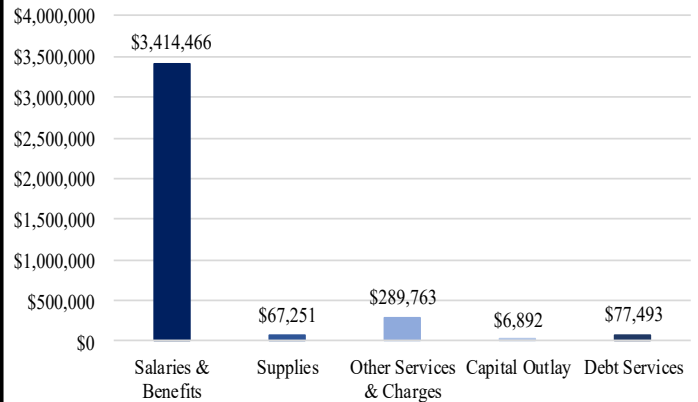
2018 Total Funding
\$3,855,865

2018 Total Expenses
\$2,406,275

2018 Funding Sources



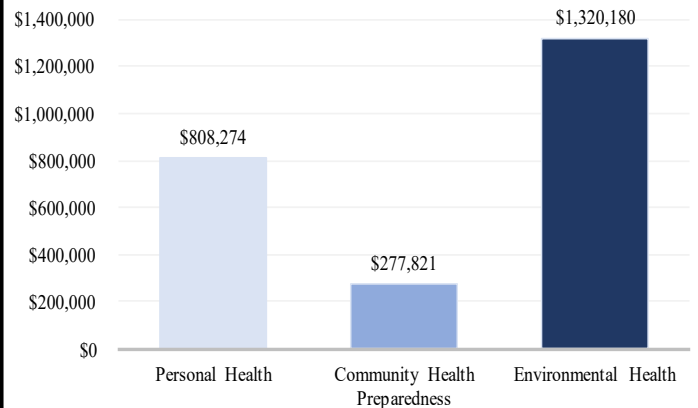
Expenses by Type



2018 Agency Funding

County Assessments	\$457,819
State Public Health Assistance	\$399,634
Foundational Public Health Services Funding	\$65,679
Federal Grants	\$738,811
State Grants	\$123,982
Permits and Fees	\$2,146,678
Miscellaneous	\$32,351
Total Funding	\$3,964,954

Expenses by Program



all figures are preliminary at time of publishing and subject to change

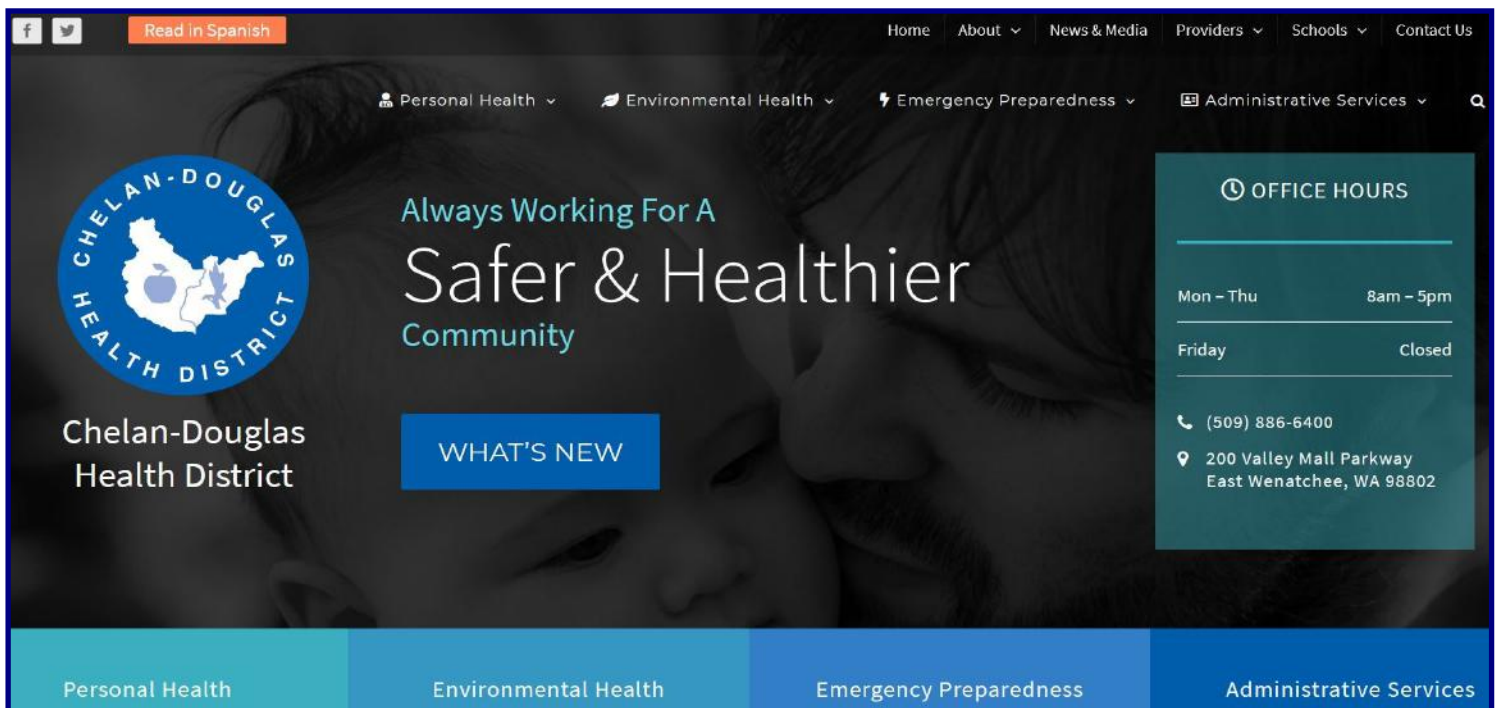
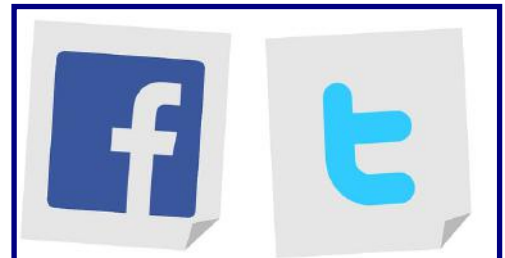
SOCIAL MEDIA & WEBSITE



Facebook grew by 225% in 2018!

CDHD's Top Post in 2018 Reached over 20,959 People!

Follow us on Twitter and Facebook:
@ChelanDouglasHD



CDHD Launched its New Website in January 2018.

Always Working for a Safer and Healthier Community



Chelan-Douglas Health District

200 Valley Mall Parkway, East Wenatchee, WA 98802

P: 509-886-6400 | F: 509-886-6478

www.cdhd.wa.gov

Facebook: @ChelanDouglasHD | Twitter: @ChelanDouglasHD