

TB 110 Conveyor Spec Sheet

Conveyors

Conveyor horizontal reach

Maximum at 0°	(32.34m)
Maximum at 30°	(27.91m)
Conveyor belt width	(457mm)
Feed conveyor length	(11.60m)
Feed conveyor belt width	(457mm)
Trunk/end hose length	(4.57m)

Discharge height from grade

Maximum at 30°	(18.36m)
Maximum at -15° -	(-6.11m)
Rated capacity at 0°	(4.60m ³ /min)
main & feed conveyors	(275m ³ /hr)
Rated capacity up to 20°	(2.90m ³ /min)
main & feed conveyors	(175m ³ /hr)

Outriggers

Net reach beyond outriggers

Maximum at 0°	(30.65m)
Maximum at 30°	(26.23m)
Outrigger spread L - R — front swing out hydraulic up/down	(7.05m)
Outrigger spread L - R — rear swing out hydraulic up/down	(8.17m)

General Specifications

Water tank capacity	(757L)
Hydraulic oil tank capacity with cooler	(568L)

Truck Specifications**

Weight	(9,215kg)
Engine horsepower	(302kW)
Wheelbase	(7,290mm)
Cab height	(2,642mm)
Steering radius (outside)	(13.87m)
Steering angle	30°
Fuel tank capacity	(303L)
Transmission	Mack T309LR 9-Speed

Transport Axle Weights**

Steering	(8,733kg)
Pusher	(4,989kg)
Tandem	(14,185kg)
Total	(27,907kg)

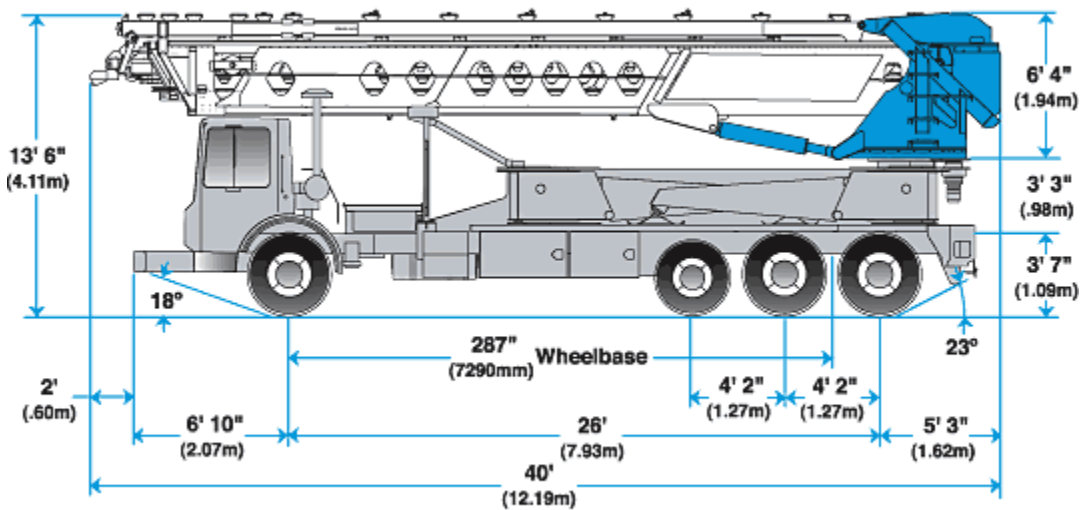
Maximum theoretical values listed.

* Truck dimensions will vary with different truck makes, models and specifications.

** Weights are approximate and include conveyor truck, full hydraulic oil, fuel, driver and 100 gal (379L) of water.

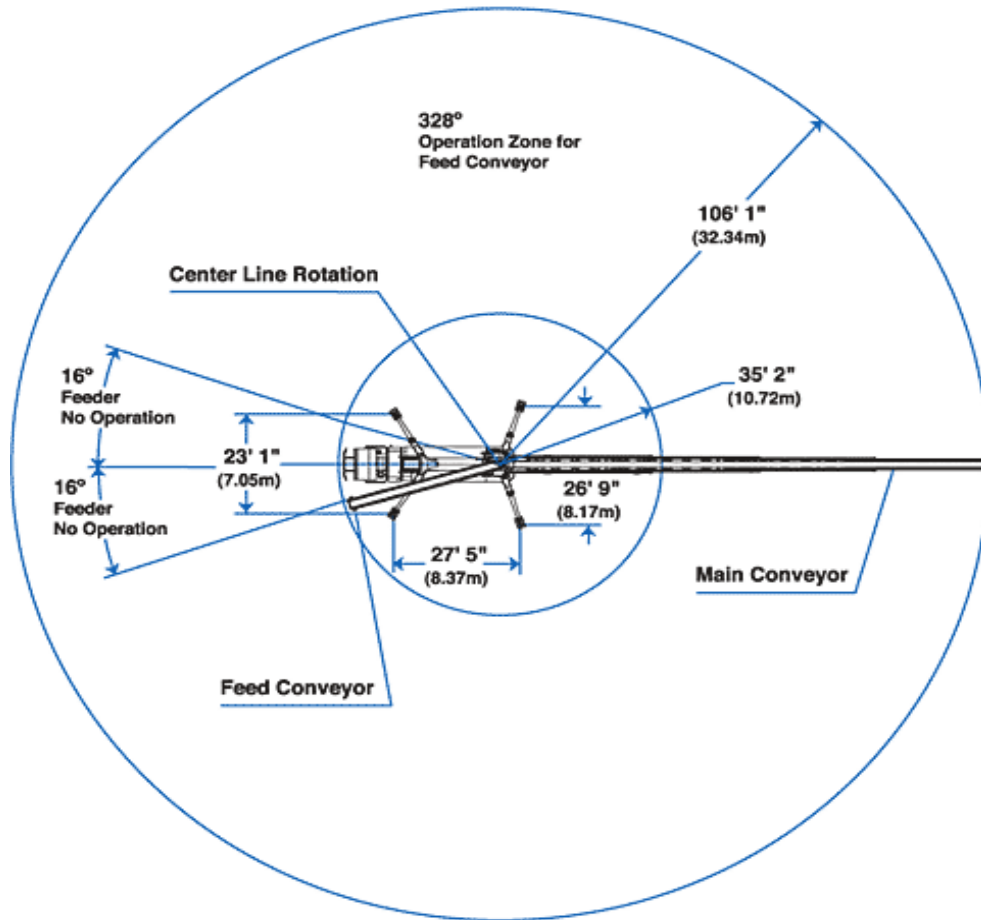
+ All specifications apply to units mounted on Mack MRU 613.

Features: TB 110 Specification Drawing



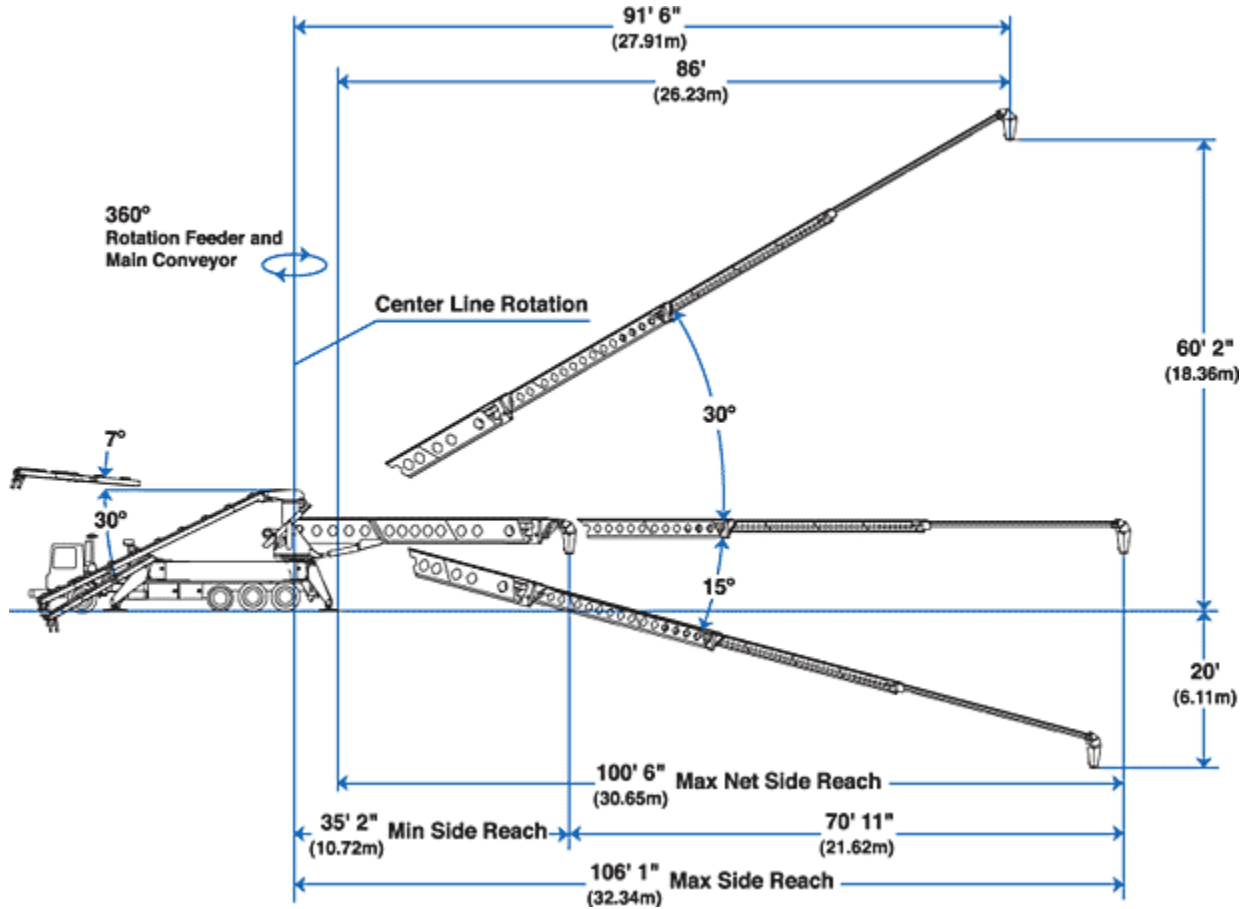
MINING

Features: TB 110 Operation Zone



SHIPPING

Features: TB 110



CONSTRUCTION