

THE APSLEY Advocate

CIRCULATION 1920 – P 02 6777 1111 F 02 6777 1112 wtc@walchatelecottage.com.au walchatelecottage.com.au

13 March 2024

Annyka recognised for service to the community

Annyka Overton was recognised for her contribution to Coaching at the Equestrian NSW annual awards recently. The evening celebrated the extraordinary achievements of New South Wales' highest performing athletes, coaches, volunteers and officials.

Annyka received the Service to Community - Coaching award from Olympian Rachael Downs at the awards dinner.

Annyka mentioned she was incredibly proud and humbled to be in the room with so many of Australia's top Equestrians. "It all felt quite surreal. I couldn't believe it at first when I received the email about my nomination."

Annyka is the current head coach and Equestrian Co-ordinator at NEGS Equestrian in Armidale, as well as still regularly competing herself.

"The award had gone to such amazing coaches in previous years, I thought it way out of my league. To have been awarded it this year, feels absolutely amazing.

"I am just so grateful to NEGS, my family and the many coaches and students who have helped me along the way."



Annyka is pictured second from left with Rachael Downs, Colleen Brooke, Sally-Anne Barbera and Prue Barrett

Financial Services

- Rural and Commercial Finance
- Leasing
- Home Loans
- Insurance Premium Funding

Kel Penfold



6766 5309 : 0427 667 118



Show Results Page 8 – 10



Purchase
CYDECTIN PLATINUM
or CYDECTIN LONG
ACTING INJECTION
and go in the draw to WIN



6 Aberbaldie Road
Walcha
6777 2588
www.wvs.com.au



WIN
A HONDA XR190
FARM BIKE!





OK EARTHMOVING

Specialising in road construction & maintenance

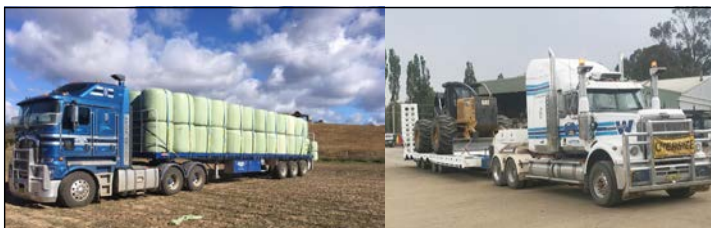
• Stickraking • Dam building • Erosion works



Bulldozers • Excavator • Tip-truck • Vibrating Roller

PH 6777 7430 FAX 6777 7448

PETER O'KEEFE: 0429 944 821



45ft flat top • 45ft single deck cattle float • 26mtr B Double
19mtr mini B Double • Low Loader available for hire



BRIAN
Smith
**TIMBER
TRANSPORT**

Call us for
your large
Transport
needs

WALCHA
02 67772126

Bonnie Smith 0429 772 077
Brian Smith 0427 780 216

around the traps



By SIMON NEWTON

The Walcha Show weekend has come and gone and by all reports another great success with the local community turning out in droves to support this local event. The weather has us all asking questions with the days being quite hot and then heading for a jacket in the evening, that easterly breeze has quite the chill in it. The district continues to deteriorate as we reach the halfway mark of March with some areas extremely dry and running out of feed. Some producers have planted their annual crops and others too dry to start but if we don't get some rain in the next few weeks, those who have planted and plants that have germinated will come under stress. The forecast is not looking good for rain over the next week, nor the rest of the month and decisions will need to be made fast. If you haven't already sourced hay, at least there seems to be plenty advertised in the northwest.

A trip to Gloucester and Wingham last week was another huge change in seasons with those areas looking very good and carrying a nice body of feed. It was only late last year it was brown, dry and hot but what I did notice was the amount of weeds through those parts, the lantana is out of control and poisonous to livestock. Drones would get a lot of work in those areas as the country is too steep in a lot of parts for tractors and ATVs to spray which is where most of the weeds are getting out of control. Lantana was imported as an ornamental garden flower back in 1841 it has just spread like wildfire throughout the coastal regions. I'm glad it doesn't grow in the tablelands but who knows, in the future as these weeds tend to adapt over time.

The cattle market is coming under pressure once again with numbers continuing to flow in the Autumn offload. The weather is forcing more numbers out and the south is actually quite dry but carrying a reasonable body of dry feed. The cow market has taken the biggest dip with cows dropping by as much as 40c/kg in Wagga on Monday with the best cow selling to 230c/kg. Processors have the upper hand once again with a buoyant trim and ground beef market to overseas, especially the USA gaining momentum. Interestingly Brazil has already filled its tariff free beef quota for the year which means they will now have to pay a 26.4 percent quota tariff on all beef shipments into the USA for the rest of the year. The USA demand for beef is growing as their domestic production is in sharp decline and Australian beef exports can now be more competitive against Brazil due to these tariffs. I just hope our processors can get the labour required to handle the extra kill numbers because the world is hungry for protein, and we have a great product.

1680 cattle were yarded in Tamworth on Monday with all prices trending downwards as restockers paid to 356c/kg for Angus weaners and 298c/kg for heifers. Yearling cattle to feed sold to 358c/kg for Angus steers while the heifer portion topped at 322c/kg. Heavy export cattle topped at 290c/kg while cows sold to 242c/kg, weighing 695kg. 6600 sheep and lambs were yarded on Monday in Tamworth will the market trend heading south like the cattle job. Restocking lambs met less competition with numbers and quality affecting values with the best of the restocking lambs selling to \$95 for 2nd X lambs. Trade weight kill lambs topped at \$158 while heavy weight lambs over 70kg topped at \$227. Heavy mutton bucked the downward trend selling to a dearer market with heavy XB mutton making to \$82, light mutton was once again on the nose with plenty of sheep making under \$20. Lamb contracts came out last week which gave lamb producers some confidence with values around 750-800c/kg carcass weight available for early winter.

If you are looking for a day out this Sunday then the Ellandonan clearance sale is on, commencing at 11am out at the end of the Bark Hut Road.

Walcha region Autumn photo competition

'Autumn Colours of Walcha'

From Walcha Tourism

The Walcha region is renowned for its distinct and beautiful seasons. As the landscapes of our region become awash with sensational Autumn colours we want to celebrate and showcase this. We are excited to announce the launch of a new photographic competition *Autumn Colours of Walcha*.

Autumn Colours of Walcha photo competition will offer two categories. Category 1 will focus on a traditional approach and could include (but is not limited to) landscapes, streetscapes, garden images or Autumn flora.

Category 2 is all about creativity and colour and could include (but is not limited to) digital manipulation, multiple exposures, abstract images or humorous photos.

With \$500 worth of prizes up for grabs we hope this encourages all those serious and budding photographers to get out and about. First place in each category will receive a \$200 Gift Card and a local hamper. Highly commended will also be acknowledged.

To enter simply email your images to tourism@walcha.nsw.gov.au OR upload your images via the Walcha Region Autumn Photo Competition - Submit Entries link on the Walcha Tourism website at www.walchansw.com.au/whats-on/ Entries close 24 May 2024. Please include your full name and contact information, optional brief description of the photo, optional social media tags.

Judging will be undertaken by Walcha Tourism and the winner from each category will be announced on 5 June 2024.

Photographs must be taken in the Walcha region and should



prominently show the colours and beauty of Autumn in Walcha.

There is no limit to the number of submissions for either category. For all the details, terms and conditions go to www.walchansw.com.au/whats-on and scroll down to the *Walcha Region Autumn Photo Competition*.



Stock and Property Watch

www.nutrienharcourts.com.au

SOLID BRICK FAMILY HOME



Lovely brick and tile home set on a flat block.

- Open plan kitchen/dining
- Spacious lounge
- Three bedrooms, all of a generous size with built-ins
- Well designed bathroom, easy care layout with a separate toilet
- Laundry with second toilet
- Large sunroom with new flooring, perfect sunny area for cold winter days
- Reverse cycle and wood heating ducted through a radiator system to each room
- Cement drive, double garage, double carport, workshop, tank and solar panels
- Short stroll to local Central School

Brick homes rarely come on the market in Walcha – so now is your chance to secure yours.

Enquiries to Peta Carter: 0407 350 781

REDUCED to \$530,000

SHORT STROLL TO TOWN



This quaint little home has cladding with an iron roof, featuring a detached garage.

- Two generous size bedrooms with built-ins
- Lounge room has wood heating and gas point
- Kitchen has an abundance of cupboard space with separate dining
- Bathroom includes shower/vanity/toilet
- Sunroom with new flooring opens onto patio

This property is on a large flat block and fully fenced

Enquiries to Peta Carter: 0407 350 781

\$350,000

Nutrien Boulton's Walcha ■ 3n Derby Street Walcha ■ 6777 2044

CLEARING SALE

"ELLANDONAN"

1007 Bark Hut Road Walcha 2354
(Property Sold)

A/c The Estate of the Late G Schaefer

Sunday 17th March

Commencing at 11.00am

Items for sale include but are not limited to: Massey Fergusson 5465 Dyna 4 tractor 4WA 2817 hrs, Challenge 3821 series FEL with bucket & pallet forks; Nissan MK240 diesel truck with 20' tray 147632km Reg AL 90 ME; Enclosed horse float 20'; 2nd enclosed horse float; Nissan Patrol Ute 11/09 built Diesel Alloy tray many extras Reg DB 56 HC; 1985 Hilux ute unreg 2ltr runs; Old Holden Rodeo ute unreg; Dual axle Woods trailer Reg Y23892; 2.4 mtr 4in1 bucket with Euro hitch; combination blade / stick rake Euro hitch; Vicon 2 tonne 3PL fert spreader dual hyd spinners (good cond); Croplands 08/14 mod 3PL 12' boom & spray reel (V little use); 600 ltr Rapid spray tank with Honda motor on a ute frame; Steel A frame engine lifting gantry with hyd powered endless chain; John Shearer 9' scarifier (old); John Shearer 5GP one way plough 14 disc(X2); Connor Shea 18 disc one way plough; harrows; MF 3PL ripper; MF post hole digger; Page 10' slasher (needs work); Towing root rake approx. 4m wide; Michell 14' grain bin (old); Messmate Crump training super spreader (old); Insulated truck tray used as container side and rear doors; Cool room (10 amp); Band saw; Silvan 100 ltr ute back spot sprayer; Toolex combination welder / generator (Honda GX390 motor); Jacky feeder bin; Old fire fighting trailer with near new Honda pump; Ute tray with steel floor (x2); 3 X fuel tanks on stands; Lyco Power Tech wool press (10amp); wool table; portable wool pack holders; several good qty steel work benches; Qty of workshop tools; Pallet racking; WSM 200 welder; Smootharc 181 Mig welder; Magmate 220 plasma cutter; General TUV laser level; McNaught hydraulic steel post driver; Gallagher wire spinner; ringlock strainer; dolly's; Qty of Husqvarna & Stihl chainsaws; 2 x gal sheep feeders; 3 x shelter frames; 2 x old sheep handlers; sheep weighing crate; 5 x 1 tonne bags of Riddleys sheep & cattle pellets; As new Gallagher MBS 2800i Multi powered fence energiser kit; qty gal cattle yard panels & gates; 2 x new 12' gates; 3 lengths of large steel pipe (approx. 50cm); several road grids; sling of cattle rail; qty of steel strainer posts; approx. 5 slings of 2nd grade gal RHS; sling of 12 lengths 8 mtr RHS 89x89x6; 5 lengths 6mtr 150 mls pipe; Qty used gal iron; lge qty sawn timber rails; qty Gal Maxi posts; sling of gal J10 steel posts; Qty steel gal posts; qty used steel posts; 9 rolls 6' wire netting; 11 rolls 2.85mm HT long life wire; 3 rolls 2.5mm tyeasy; Qty insulated wall panels; lge qty of GE out door Roadway light fittings LED P4P5; several stock saddles include McKellar & Kilmore made, significant qty of horse gear (rugs, bridles etc).

Other vendors: 2 x belt cotton seed cattle feeders; C-Dax 100 ltr spray tank (tank only); Rudweigh cattle scales;

Directions: Take Winterbourne Road from Walcha for approx. 16km, turn right onto Bark Hut Road and follow 10km to the end of the road. Catering: Light refreshments will be available on site.

Terms & Conditions: EFTPOS available. Cash or approved cheque on the day of sale. Numbers system will apply and ID required.

Outside vendors invited

Selling agents

NUTRIEN BOULTON'S

(02) 6777 2044

Miles Archdale 0428 660326

Dan Coulthurst 0419 879793



Stock and Property Watch
www.nutrienharcourts.com.au

AUCTION RARE OPPORTUNITY "GREEN HILLS"

160 Aberbaldie Rd Walcha 2354
68.36 ha / 168.9 ac

Just minutes from the centre of town
Building entitlement – Outstanding home sites
Highly desirable east and north easterly aspect
Magnificent undulating productive country
Basalt & trap country – supered pastures
Watered by dams – three paddocks

Formerly part of "Red Hill"
**Such a rare opportunity to purchase
a parcel of land so close to town**

AUCTION
Wednesday 27th March at 11am
at Walcha Vet Supplies

Inspections strictly by appointment
NUTRIEN BOULTON'S 6777 2044
Bruce Rutherford 0428 660328

FAMILY HOME VIEWS OVER TOWN



- This spacious home is situated a short stroll from town.
- The weatherboard and iron home consists of four bedrooms, three with built ins. The fourth bedroom has a walk in robe and large ensuite with corner spa.
- Open plan lounge with wood heater and the most amazing views of town.
- Spacious dining flowing through to the sun drenched family room with gas heating for winter.
- Huge timber kitchen with cooktop, under bench oven, dishwasher and an abundance of cupboards.
- Fully enclosed two tier yard with covered entertaining area, wood shed, garden shed and double garage with remote access.

Enquiries Peta Carter: 0407 350 781

REDUCED TO \$490,000

Nutrien Boulton's Walcha ■ 3n Derby Street Walcha ■ 6777 2044

Diocesan Winter Trials



From Dallas Hyatt, Principal

Last Friday, Angus, Albert, Henry, and Lochie (Boys Football), along with Emily, Claire, and Claire (Girls Football), Jessica and Grace F (Girls Hockey) and Bentley (Open Rugby League), journeyed to Tamworth with the aim of earning a spot in the Armidale Diocese Team for their respective sports.

Emily and Albert advanced to the possibles vs probables stage,

but unfortunately none of the students in football or rugby league were able to secure a place in the Diocesan representative team due to tough competition from participants across the Diocese.

Nonetheless, we extend our congratulations to Grace and Jessica for being chosen to represent the Armidale Diocesan Girls Hockey Team at the Polding Winter Trials in Tamworth on Friday, 3rd May. We wish them both the best of luck.



New England Renewable Energy Zone

The Energy Corporation of NSW (EnergyCo) is delivering the New England Renewable Energy Zone (REZ) to provide a clean, affordable and reliable power supply for energy consumers across NSW.

Community information sessions

EnergyCo has updated the preliminary study corridor for the New England REZ transmission project. We will be holding community information sessions in March 2024 so you can meet the project team, ask questions and provide feedback on the revised corridor.

No formal presentation will be given, so you can drop in any time during the sessions:

Monday 25 March, 2pm-7pm

Armidale Town Hall, 127 Rusden Street, Armidale

Tuesday 26 March, 2pm-7pm

Tamworth Community Event Centre, 3 Darling Street, Tamworth

Wednesday 27 March, 2pm-7pm

Muswellbrook Library, 126 Bridge Street, Muswellbrook

More information

To learn more about the New England REZ transmission project, please visit our website at energyco.nsw.gov.au/ne or by using the QR code. If you have any questions, you can contact our team on **1800 061 114** (toll free) or by emailing nerez@energyco.nsw.gov.au. We look forward to hearing from you.



SE1453

2024 ART CLASSES with SUE JACKSON

INTRODUCTION TO ART – Beginners 6 weeks, starting 14 April (not including Mother's Day). 1-4pm Sundays. \$500 pp. All materials supplied, concluding with a work on canvas to take home. Afternoon tea provided. Limited places available.

DEVELOPING SKILLS WITH ACRYLIC PAINT – 3 weeks starting 6 June. 1-4pm Sundays. \$150 pp. Materials list provided when booking. Maximum 10 participants.

DISCOVERING WATERCOLOUR FOR BEGINNERS – 3 weeks. Starting 7 July. 1-4pm Sundays. \$150 pp. All materials provided. Maximum 10 participants.

Class Venue: Community Care Rooms 11s Middle Street, Walcha.

Contact: sue.18@hotmail.com or ph: 0400 425 185

Email preferred method due to limited phone service at Sue's home but can return a message when in service areas.

LOOKING FORWARD TO INSPIRING THIS YEARS' ARTISTS

JAMES TAYLOR RURAL CONTRACTING

- ✓ Contract Sowing
- ✓ Double Disc Agrowdrill with Guidance
- ✓ Contract Fencing

CALL ARIANNE ON 0428 471 269

PKF

PKF Chartered Accountants offer clients access to full suite of professional services including:

- Accounting and financial reporting
- Taxation Services
- Business Support
- Superannuation
- Cash flow projections
- GST support and advice
- Bookkeeping and record systems
- Audit and assurance
- Strategic alliances

www.pkf.com.au
12n Derby Street
Walcha NSW 2354
Phone: 6777-2377



Complete forms to be included in new Quota Caller's Guide

Quota's extremely useful Caller's Guide is coming out again this year, so it's time to act now so you don't miss out on your advertising and having your numbers listed.

In this week's Advocate you will find a form for **NEW BUSINESS ADVERTISERS** to complete if you would like a display ad in the Caller's Guide. In upcoming editions Quota will have a green form in the Advocate for you to complete to have your number listed in the Caller's Guide.

If you would like to know the cost for the different sizes of advertisements available you can contact the Quota members listed on the bottom of the form.

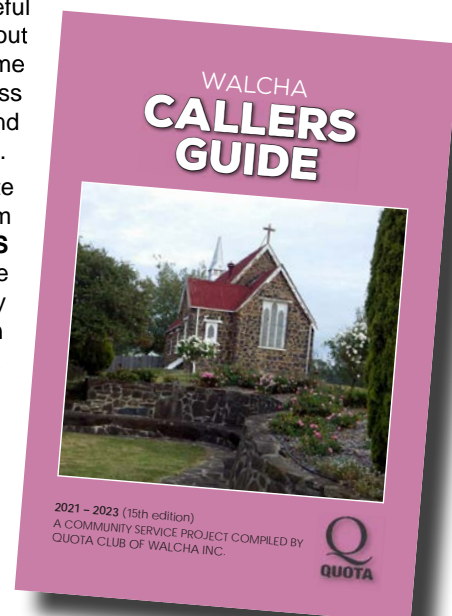
"It is great value for the size of the advertisements and remember, they last for three years," Quota member, Pam Makeham said.

To ensure the Guide benefits the community, the Quota Club is encouraging everyone to include their numbers. "Many people no longer have land lines, so we encourage everyone to get their mobile numbers in the Caller's Guide to make it a great community phone book," Pam said.

The Caller's Guide is published every three years, with this being the 16th edition. It is easy to use and read compared to other phone directories and is completely local. Funds raised by the Quota Club are used within the Walcha community in the schools, and charities which help locals.

You need to act quickly to secure your advertising space, so return this form by Friday 5 April to secure your spot and payment should be made to Quota Club of Walcha BSB 062-699 Account: 2800 9573 with Business Name used in the ad in the description.

Forms can be dropped in the box outside Walcha Post Office.



thumbs



- 👍 To Kylie Goodwin who found my purse over the weekend and returned it.
- 👍 To James Tickle and his helpers for another wonderful running of the motorcycle events at the Show.
- 👍 To the Walcha Show Society for their huge efforts in providing so much entertainment over the weekend. We are extremely fortunate to have such a vibrant Show for the community to support and enjoy.
- 👍 To Di and Lorraine for the wonderful job they did in keeping the bathrooms clean at the Show.
- 👍 To people on rural properties who let their dogs bark all night.

Contributions will be received in person, by phone or email and must be accompanied by your name and contact details. They will be printed at the discretion of the editor.

QUOTA WALCHA CALLERS GUIDE

2024 UPDATE

- The local phone book covers Walcha and the surrounding areas of Brackendale, Kentucky, Moona Plains, Niangala, Nowendoc, Walcha Road, Wollun, Woolbrook and Yarrowitch.
- The Walcha Callers Guide is published at least every 3 years.



BUSINESS DISPLAY ADS

Please complete relevant section below and return this form by 5 April 2024:

SECTION 1: EXISTING ADVERTISERS

1. ☐ I AM HAPPY WITH MY CURRENT AD

Business Name

2. ☐ I NEED CHANGES TO MY CURRENT AD

Business Name

Please discuss your changes with the staff at Walcha Telecottage

SECTION 2: NEW ADVERTISERS ONLY

Please complete details below

Various sizes to choose, starting at \$160 for 50mm h x 90mm w.

Please contact Julie Yates for size options and pricing. Phone 0427 780 132

NOTE
All business display
advertisers will receive
a bold listing and a
free copy of the Callers
Guide.

NEW ADVERTISING DETAILS *Please print clearly and complete all details*

Business Name

Contact Person

Phone

Email

- ☐ I will be supplying my own completed ad

Please supply as a high resolution PDF to correct ad size no later than **5 April 2024**.

OR

- ☐ I require my ad to be designed for me

Please email all wording and high resolution logos to wtc@walchateleccottage.com.au no later than **5 April 2024**. A proof will be sent to the email listed above.

FORMS: PLEASE RETURN TO QUOTA DROP-OFF BOX AT WALCHA POST OFFICE

Enquiries: Contact Quota – Julie Yates 0427 780 132



Will Brennan scoops the Golf Pool

By AJ Cross

Club Captain Willy Brennan certainly had a golfing day to remember when he scooped the pool on the final day of the 2024 Mens Championships last Sunday.

The new Club Champion carded a three round total of 236 (80,78,78) to defeat runner up Michael Stackman 239 (79,79,81) by three shots with Miles Archdale 241 (79,79,83) finishing in third position.

He wasn't finished there, also winning the Nick Cross Memorial for the best nett score over three rounds on 210 (71,69,70) from Miles Archdale 212 (69,69,74) and the Veterans Championship with 236.

'Molleydooker' Jamie Bowden 257 (86,87,84) snuck home by a shot from Don Brooks 258 (88,85,85) to win his seventh 'B' Grade title whereas a three hole play off was called for to determine 'C' Grade before reigning champion Drew Bird 284 (99,94,91) prevailed over his second cousin Darren Bird 284 (98,95,91) by one stroke in the play off.

Playing for President Allan Green's trophy last Sunday John McCormack ran out the winner after he registered a 68 nett while sweepstakes went to Cheryl McDonald 69, Will Brennan and Darren Bird both 70, Don Brooks, Jamie Bowden and Col Berry all 71.

Sharpest shooters at the pins were Vicki Heffernan (3), Wayne Brennan (9) and Jenny Lisle (18).

Last Saturday Vicki Heffernan accumulated 20 stableford points to win the weekly 9 hole competition from runner up Pete Whellan on 17 points who also took out the N.T.P on 3.

This Sunday is the annual Colleen and I.J Cross Memorial played under a 4BBB Medley format.



Willy Brennan(A Grade), Jamie Bowden (B) and Drew Bird (C)

Court named in honour of Trish

From Trevor Gibson

Trish Partridge was honoured by the Walcha Tennis Association with the placement of a memorial plaque on Court 1. Trish was a longstanding Member of our Club and was our Club Secretary. She gave many hours of her time to the Club and was great at her role as Club Secretary.

Trish is missed and fondly thought of by her many friends at the Club and in the broader community. Sandra Laurie and Jenny Hoy were close to Trish and are pictured below the plaque placed in her honour.



Pitt Son's REAL ESTATE & LIVESTOCK

SAM PAYNE 0428 667 404 | ANDREW BLOMFIELD 0428 667 402

RON VINCENT 0427 775 821 | TROY DAVEY 0427 157 557

FOR LATEST UPDATES



6777 2000 |

www.pittsons.com.au



Lovely Outlook

- Three bedrooms. Built-ins to two
- Open plan kitchen, dining and loungeroom
- Good size kitchen with dishwasher
- loungeroom with wood heater
- Lovely sunroom on northern side office
- Lock up garage

Priced for quick sale
\$395,000



2024 WALCHA SHOW RESULTS

Merino Sheep

Champion Extra Superfine won by Westvale (Ram) Shalimar Park (Ewe). **Champion Superfine** Shalimar Park (Ram and Ewe). **Champion Fine Airlie** (Ram), Shalimar Park (Ewe). **Champion Fine/Medium Airlie** (Ram), Nerstane (Ewe). **Junior Champion Airlie** (Ram) Glenburnie (Ewe) and Queenlee (Pair). **Grand Champion of Show** to Airlie (Ram) and Shalimar Park (Ewe). **National Australia Bank Supreme Merino of the Show** to Airlie. Breeders Group 3 Rams to Queenlee.

Flowers

Champion: Dahlia Bridgette Hone, **Rose** Kate Mackaway, **Miscellaneous** Ros Little, **Open**

Decorative Julie Ireland, **Restricted** Helen Wake, **Olga Lisle Trophy** Helen Wake. A big thank you to the schools that contributed to our magnificent display.

Knitting and Crochet

Champion: Piece of Knitting Lesley Andrews, **Crochet** Marissa Taylor, **Encouragement Award:** Steph Blake

Pet Competition

Class 1. 1st Smokey **Champion** Smokey **Concolation** Pippa. **Class 2** 1st Lilla, 2nd Liv. **Class 3** 1st Noodle. **Class 4** 1st Harry. **Class 5** 1st Lagather, 2nd Pippa, =3rd Banjo and Hot Wheels. **Class 6** 1st Poppy, 2nd Cookie, 3rd Coco. **Class 7** 1st Pippa.

Poultry

Walcha Poultry Club had a successful Show, with just under 200 entries. Thank you to Reece Hancock for doing a great job judging and to all who came along and entered. It was a great display of poultry for show-goers to view.

Bird of Show: Ron Brown. **Hard Feather:** **Champion Large** Mick Sharkey **Reserve** Graeme Cleghorn, **Champion Bantam** Ron Brown **Reserve** Stu Wellings, **Large Pair** Brendan Schmutter, **Bantam Pair** Barry Partridge **Soft Feather:** **Champion Large** Adam Nordstrom, **Reserve** Georgia Burnes, **Champion Bantam** Danny Mackney **Reserve** Geoff Hines, **Large Pair** Penelope Taylor, **Bantam Pair** Archie Little. **Waterfowl** **Champion** Riley Nordstrom **Reserve** Riley Nordstrom, **Champion Junior** Brock Lockyer **Champion Waterfowl** Gibson family.



PRELIMINARY NOTICE



AuctionsPlus™

2nd Annual New England Twilight Weaner/Feeder/Breeder Cattle Sale

Thursday 28 March 6pm AuctionsPlus

Entries invited and highly recommended



CONTACTS

Miles Archdale 0428 660 326
Simon Newton 0467 660 320
Mathew Larkings 0427 002 427
Dan Coulthurst 0419 879 793



WE NEED your Books?

Our annual Quota Book Fair is on again in April!

If you have books to donate, please drop them off to:

Youth Club Hall from
18th March - 25th March or to
Sue Reardon 61n Thee Street or
Chris Hamel 62n South Street

**THE QUOTA BOOK FAIR
WILL BE HELD
25 MARCH – 5 APRIL 2024**





Winners of the 'Chris Lisle Memorial Trophy', The Station Angus, with Chris' nephew Scott Hawkins and Chris' long-time friend, fellow Hereford breeder and Judge of the Walcha Show 2024 Cattle Section, Chris Law.



At Friday's Official Opening congratulations were in order for several of the Walcha Show Society's long-time members. Above: Don Murchie was presented with his Zone Life Membership by Andrew Hancock, President Group 13. Below: Walcha Show Society Life Membership was presented to Stephen King by Barnaby Joyce, Member for New England, and to Andrew Roberston by Adam Marshall, Member for the Northern Tablelands. Bottom: Gypsy-lee Marshall, Group 13 Delegate from ASC Next Generation presented Josh Lockyer with an award for his immense dedication to the Walcha Show Society.



Cattle

Friday

Junior Heifer Show: Jnr Champion Heifer Ben Nevis Jean, Snr Champion Heifer Clifton Tartan, Grand Champion Heifer Clifton Tartan, Purebred Steer NEGS Chilli, Crossbred Steer NEGS Mac, Grand Champion Steer NEGS Chilli.

Paraders: Under 10 Brodie Scott, 11 – 12yrs Anthea Taylor, 13yrs Imogen Lubke-Wood, 14yrs Macey Cabot, 15yrs Meg Trindle, 16yrs Kieran Watts, Opens Hannah Dunn, Grand Champion parader Hannah Dunn.

Saturday

Angus: Jnr Champion Heifer The Station Jean, Snr Champion Heifer and Grand Champ. Ben Nevis Jean S416, Jnr and Grand Champion Bull The Station King, Breeders Group Ben Nevis. **Red Poll:** Jnr and Grand Champion Heifer Lagoonu Rebecca. **Speckle Park:** Jnr Champion Heifer Flagship Thunder Babe. Snr Champion Heifer Flagship New Beginnings, Grand Champion Heifer Flagship Thunder Babe. Jnr and Grand Champion Bull Flagship Taskmaster. Breeders Group Flagship.

Simmentals: Jnr and Grand Champion Bull BAL Under the Milkyway. **Herefords & Poll**

Herefords: Jnr Champion Yalgoo Blush, Senior and Grand Champion Heifer Kylandee Dowager, Jnr and Grand Champion Bull Te Angie Turbo, Senior Champion Bull Kylandee Train, Breeders Group Kylandee. **Shorthorns:** Jnr and Grand Champion Heifer Nagol Park Romance T140, Snr Champion Heifer Nagol Park Belle S104. Jnr and Grand Champion Bull Nagol Park Tequilla T106, Breeders Group Nagol Park. **Limousin:** Jnr Champion Heifer KST Tailor-Made T3, Snr Champion Heifer KST Topaz, Grand Champion Heifer KST Tailor-made T3. Jnr Champion Bull KST Urock Jock, Breeders Group KST.

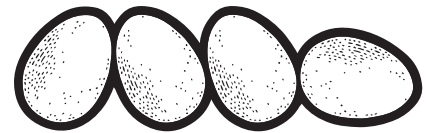
Cairnie Trophy: Nagol Park, **Nairn Park Trophy:** The Station Angus, **Yalgoo Trophy** Ben Nevis, **Ivybank Trophy** The Station Angus, **Ben Nevis Trophy:** Ben Nevis, **Supreme Exhibit** sponsored by Southcote Shorthorns: The Station Angus, **Chris Lisle Memorial Trophy** (most successful exhibitor): The Station Angus.

Results continued on page 10 >

MARKETS THIS SAT!!

Join us

FOR AN ARRAY OF
SEASONAL PRODUCE,
FRESH COFFEE,
SWEETS & PASTRIES,
BACON & EGG ROLLS,
PLANTS AND TREES
PLUS MUCH MORE!!!



GOT ANY **EXTRA** PRODUCE?*

BRING ALONG YOUR
HOME-MADE CONDIMENTS,
BAKING, FRESH PRODUCE,
PLANTS, EGGS AND SO ON TO
THE COMMUNITY STALL WE CAN
SELL THEM ON YOUR BEHALF

* SEE TERMS AND CONDITIONS ONLINE



NEW STALLHOLDERS WELCOME
WALCHAFARMERSMARKET.ORG.AU

Horse Section

Friday

Ring 1. Thoroughbred Led Phoebe Camper 'Estroncie', **Reserve** Samantha Croft 'Vincero'. **ANSA Led** Russell Quirk 'Nethany TC', **Reserve** Abby Partridge 'Secret Heart CC'. **Registered ASH Led** Russell Quirk 'Nethany TC', **Reserve** Peta Moore 'Silverthorne J'. **Any Other Breed Over 15hh** Led Genevive Freer 'Boonara VF'. **Pure or Part Quarterhorse Led** Sybella Miller 'Chicken Joe', **Reserve** John Byrne 'Chisums Scarlet'. **Any Other Breed 14hh ne 15hh** Lisa Burr 'Roseglen Coshicen' **Reserve** Deann Baines 'El Mac'. **Ridden Breed Hack** Russell Quirk 'Nethany TC', **Reserve** Abby Partridge 'Secret Heart CC'. **Ridden Quarterhorse or Any Other Breed** Sybella Miller 'Chicken Joe', **Reserve** Sophie Mulligan 'Chisel Rose'.

Ring 2. Miniature Tamara Gallop 'GT First Edition', **Reserve** Amy Breedon 'Uralla Water'. **Registered Saddle Pony Led** C Purdy 'Mackar Eclipse', **Reserve** Bethany Rhode 'Bamborough M'. **Registered Riding Pony Led** Shae Partridge 'SP Renegade' **Reserve** Clare Munro 'Park Masquerade'. **Registered Welsh or Part Welsh Pony Led** Steph Woolridge 'Bells Mt Jansen'. **Reserve** Claire Munro 'Canter Masquerade'. **Stud Book Pony Led** C Purdy 'Mackar Eclipse'. **Any Other Breed ne 14hh** C Purdy 'Mackar Eclipse'

Reserve Tallulah O'Brien 'Pebbles'. **Ridden Breed Pony** Shae Partridge 'SP Renegade' **Reserve** Steph Woolridge 'Bells Mt Jansen'.

Ring 3. Walcha District Junior Girl Rider Phoebe Grills, **Reserve** Jessica Patterson-Cain. **Walcha District Junior Boy Rider** Benji Provost **Reserve** Jack Provost **Walcha District Senior Girl Rider** Bella Miller **Reserve** Abigail Van Eyk **Champion Walcha District Senior Boy Rider** Lochie Provost. **Walcha District Adult Rider** Shae Partridge **Reserve** Abbey Partridge **IS Balmain Champion Walcha District Hack** Abbey Partridge **Reserve** Georgia Powell **Rosedale Champion Walcha District Galloway** Shae Partridge 'SP Renegade', **Reserve** Bella Miller 'Millers C Joe' **Landmark Boutons Champion Walcha District Pony Hack** Jessica Patterson-Cain 'Dexter' **Reserve** Jack Provost 'Tumby' **Grand Champion Walcha District Hack Galloway or Pony** Shae Partridge 'SP Renegade'

Saturday

Ring 1. Joan Oatley Memorial 1st Abbey Partridge, 2nd Brie Aitkin, 3rd Fiona McCarther **Champion Adult Rider** Brie Aitkin **Reserve** Len Partridge. **Champion Show Hunter Horse Led** 'Newby Park Fabiana' **Reserve** 'Bullseye Bandit' **Champion Show Hunter Horse Ridden** 'Sindalia Park Rivoeli Roy' **Reserve** 'Newby Park Fabiana' **EW King Memorial Champion Hack** Brie Atkin 'Wenona Artistry' **Reserve Champion Hack** Sam Croff 'Pip +

Took FW Nivison Supreme Champion Hack or Pony Brie Atkin 'Wenona Artistry'.

Ring 2. McCormack Family Trophy Miller Family **Champion Junior Boy Rider** Austin Kelly **Reserve Champion Junior Boy Rider** Benji Provost **Champion Senior Boy Rider** Lachie Provost **Champion Show Hunter Galloway Led** 'Riverdale Misconduct' **Reserve** 'Chicken Joe' **Champion Show Hunter Galloway Ridden** McKenzie Ellem 'Coolidough Blonde' **Reserve** S Robinson 'Kolbeth' **Cameron Martin Fertiliser Champion Open Pony Hack** C Purdie 'McCann Eclipse' **Reserve** F O'Brien 'Twilight Dancer'.

Ring 3. Champion Junior Girl Rider Harriet McMaster **Reserve** Jessica Patterson-Kane **Champion Senior Girl Rider** Sienna Robertson **Reserve** Dominique Baker **Jill Martin Memorial Grand Champion Child Rider** Sienna Robertson **Champion Show Hunter Pony Led** 'Bamoronah Moonglon' **Reserve** 'Bavaria'. **Champion Show Hunter Pony Ridden** 'Bavaria'. **Reserve** Kodak Coolidowns. **Grand Champion Hunter Hack, Galloway or Pony** McKenzie Ellem 'Coolidowns Blondie'. **O'Gorman Pty Limited Champion Open Galloway Hack** Rain Pritchard 'Crosshair Holly'.

Please Note: Every effort has been made to print correct names from the handwritten material supplied. We apologise for any errors.



Farmers' Market this Saturday

The Walcha Farmers' Market is on this Saturday 16 March in McHattan Park. There are only three markets left for the season, before the winter break.

John from Guyra is returning with his sought-after spuds, and there'll be seasonal fruit and veg from Thom and his family's expanding stall.

Sienna's Seedlings can go in the garden while the ground is still warm, along with potted plants and trees from Carinya North Nursery.

There'll be bread and bakery treats, smoked trout, goat's cheese and goat's milk skin products, homemade cakes and slices.

Grab a coffee from Jazz and visit the Walcha Historical Society's stall and Stamp Ahead.

Keep an eye on the Walcha Farmers' Market facebook page to check if Shoreline Oysters will be in attendance, depending on river conditions.

The market is on from 8.30am to 12.30pm every third Saturday of the month during spring, summer, and autumn.

Pharmacy trial reaches 12,000 treatments delivered

The NSW Government last week announced that its scope of practice trial for pharmacists has seen 12,000 treatments delivered.

Under the trial, which Kings Pharmacy in Walcha was participating, patients can access treatment for uncomplicated UTIs and repeat prescriptions of the oral contraceptive pill at the Pharmacy.

Beginning in May 2023 with just 100 pharmacies participating, the trial has expanded to include over 1,000 pharmacies across the state.

The trial is set to expand further in coming weeks to include skin conditions like impetigo, shingles, and dermatitis.

These and other scope of practice reforms are anticipated to deliver a total dollar benefit of \$1.6 billion annually to the New South Wales economy in productivity gains and reduced healthcare costs, as patients are able to access the treatment they need without presenting to an emergency department or waiting for a doctors' appointment.

"Patients need affordable, accessible everyday healthcare," said the Pharmacy Guild's NSW Branch President, David Heffernan. "With pharmacists working closer to their full scope of practice, 12,000 patients across the state have accessed treatment at their local community pharmacy, taking pressure off of hospital emergency departments and GPs."

advocate sport



Tennis

Round 5 of the 24 Summer Comp was played out on Tues 5th March.

Purcell: E Blomfield, P O'Brien, D Wall and P Tape defeated Rodionova: K Creighton, B Hoy (floater), A Blomfield and T Gibson 33 to 28.

Birrell: DA Locke, R Bagnall, G Wall and S Blake defeated Popyrin: H Thomson, C Ireland, M Ireland (floater) and S Ireland 30 to 24.

Gadecki: H Locke (floater), D Clarke, K Smith and A Fox defeated DeMinaur: D Sweeney, E Wauch (floater), E Habermann and M Luchich 29 to 27 in a tough battle.

The next Club meeting will be held on Mon 18th March at 6.30pm. All members are welcome and encouraged to attend. See you all at the net soon.

Wednesday Golf

Deb Richards trophy was up for grabs last Wednesday and it was a par event.

Julie Hoad was the winner with a square. Sweepstakes went to Pauline Carter with -1, Penny King -1, Sue Partridge -2, Marg Davidson -2, and Jill Burnell -2 on a countback.

Alison Cameron was the closest to the pin on Hole 3 and Lorraine Walshe on Hole 16.

Deb gave extra trophies for second shots on Holes 7 and 18 and the winners were Vicki Heffernan on 7 and Julie Hoad on 18.

Today we are playing a Graham Betts stableford for a trophy donated by Lorraine Walshe.

Bowls

Dads Army: Two games of pairs were played on Thursday afternoon with the results of both games very close with only three shots dividing each. In the first game Jason Asmus and John McCormack defeated Brian Goodwin and John Watts 23 - 20 and in the second game Barry Kliendienst and Geoff Salt were 14- 11 winners over the Noel Goodwin and Peter Hayes.

Jason and John won the chooks and the raffle was won by Gary Natty.

Twilight: The fourteen teams again enjoyed good weather on Friday evening for their game of bowls.

Team seven had a good game against their opponents although they lost and the "champs" had a close encounter with an all women's team.

Draw for Saturday:

Pairs - N&B.Goodwin v G.Carter & R.Kerr.

J&T Asmus v M.Steep & M.Hamel.

If anyone else wants to play their championship games feel free to organise them.

Cricket

Walcha/Uralla v Ex - Services 2nd Grade

Ex - Services

IROSHAN b M Harper.....	14
CHANDIMAL st B Hoy b E Blomfield	26
C SMITH c B Moore b M Harper	4
S SANDHU c B Moore b B Hall	32
M SANDHU c B Hall b B Hall	2
N NISH c E Blomfield b N Swan.....	2
MD SAIFAL c B Moore b B Hall	3
M RETON n.o.....	19
FAHIM AFNAN c? b N Swan	1
ASHOKA b N Swan.....	8
KASUN lbw M Harper	1
Total 124. Extras 5. Bowling (overs/maidens/wkts/runs)	
M Harper 6-0-3-19, P Mooney 6-0-0-26, D Boyd 5-2-0-8,	
B Hall 9-0-3-34, E Blomfield 4-0-1-15, N Swan 9-2-3-19.	

Walcha/Uralla

E BLOMFIELD lbw Nish	7
B HALL c Saiful b Iroshan	11
D BOYD c Nish b Sandhu.....	17
N ENDACOTT r.o Afnan	24
S RAFFERTY n.o.....	37
B HOY c Nish b Afnan.....	0
B MOORE n.o	21
Total 129. Extras 15. Bowling (overs/maidens/wkts/runs)	
H Iroshan 9-1-1-25, N Nish 9-2-1-21, S Sandhu 9-0-1-23,	
N Chandimal 8-1-0-30, B Sandhu 3-1-0-9, F Afnan 3.3-0-1-15.	

Walcha/Uralla 2nd Grade cricket team qualified for the preliminary final of their Armidale and District competition when they defeated Ex Services by five wickets at Rologas field in Armidale last Saturday.

The homeside batted first after winning the toss and set the visitors a total of 124 before they were dismissed in their 39th over.

Three Walcha/Uralla bowlers snared three wickets each opener Matt Harper 3/19 off his six overs, Nathan Swan 3/19 off nine overs and Ben Hall 3/34 off nine overs.

Captain Ed Blomfield claimed the remaining wicket when evergreen wicket keeper Barry Hoy executed a stumping off his bowling.

Walcha/Uralla weren't in a big hurry to pass their assignment and were into their 42nd over before getting the job done.

Number five batsman Shannon Rafferty top scored with an unbeaten 37 and received valuable support from veteran Nick Endacott 24 and Blaine Moore 21 not out whereas Daniel Boyd 17 openers Ben Hall 11 and Ed Blomfield also contributed.

Walcha/Uralla now play Hillgrove in the preliminary final this Saturday somewhere in Armidale to determine who takes on TAS in the grand final the following weekend.

Ladies Bowls

Last week six lady bowlers played a game of triples with Lee McCoy, Janice Rizzi and Esther Hunt winning 26-14 from Marg Tickle, Wendy Moore and June Hayes.

This week is the start of our 2024 Championships with Minor Singles and the draw is Carmel Ryan v Rosie Aitken marker Pam Makeham Marg Tickle v Wendy Moore marker June Hayes. Full uniform must be worn.

Last Saturday June Hayes attended the 50th Anniversary of the Armidale Ex-Services Club Ladies Bowls and had a successful day playing in the winning team with Ken House and Reg Battersby from Ex-Services and also winning a raffle prize.

There will be social bowls this week for those not playing in the Championships.

There's a sheet on the board for the Bendemeer Presidents Day.



Apsley Advocate editor Anthea Macpherson rarely doesn't have a smile on her dial but there would have been none bigger than last Saturday afternoon when 'Kingston Charm' the racehorse co-owned by her partner Walcha Jockey Club President Jim Nivison saluted in the opening race at Randwick last Saturday. Pretty sure the 'Dynamic Duo' enjoyed some of the \$66.60 for a win and \$14.60 for a place paid out by the TAB after 'Kingston Charm' was listed at 70-1 before the race.

...

Don't know what I was thinking while attending the Show last Saturday when just before the 'Dodgem Cars' were about to commence a new session I decided to jump in a car driven by my grandson Eli - what could go wrong? (Pictured on page 10). Well it didn't take long to find out, everytime we were rammed by another car my left knee smashed into the dashboard of our car resulting in an abrasion to my leg. Fellow family members, either driving cars or spectating thought the whole thing was a great joke and although it isn't known how long the session lasted it certainly felt like an hour and a half.

...

There was plenty of action happening at the Showground not only last Friday and Saturday but also on Thursday when preparations were being made including the pavilion where my sister Tracey Crisp was carrying out duties as a Cooking Steward. Some of the girls in the nearby Preserves, Jams and Jellies section noticed 'Tracky' was wearing her shirt back to front before quickly pointing it out. In fairness when I saw the way Tracey was wearing the shirt I thought that's how it should have been worn.

...

Still in the Preserves, Jams and Jellies section my niece Audi Dunn must have handed down plenty of tips to her children Kayleigh and Alex who followed their mum's footsteps by collecting plenty of prizes at the Show last weekend. In my opinion nobody makes better Chillli Relish than Audi. Good on ya guys.

...

Walcha/Uralla Cricketer Daniel Boyd reached the milestone of scoring 600 runs last Saturday when he made 17 runs against Ex Services in Armidale. So far this season the new Walcha Council employee has scored 601 runs including three unbeaten centuries at an average of 42.92 everytime he visits the batting crease. Way to go Daniel.

...

Sometimes knocking champions can come back to bite you as happened last weekend when veteran Walcha cricketer Peter Mooney suggested to local enthusiast Brian Wellings that Australian wicketkeeper Alex Carey should be dropped from the team as he wasn't scoring enough runs. That was before Carey saved the match for the Aussies last Monday with an unconquered 98 runs. Go the Molleydookers.

...

Best fo luck to local axeman Mitchell Scrivener when he travels to Cairns this weekend to compete in the Stihl Timbersports 2024 Australian Trophy where he will be up against 15 other axemen in the 'Big Boys' division after progressing from 'Rookies' to Opens. Go gettum Mitch.

...

Certainly hope your footy tipping got off to a better start than mine in Round 1 of the NRL competition over the past two weekends, after I only correctly selected three winners. But having done that there must be a helluva lot of worse tipsters about considering I'm in an ESPN tipping competition currently running 116,507th out of 414,775 nearly 300,000 in front of the rest.

...

Local Big Wigs of the week - Newie - Eve Smith 14 pts. Apsley - Henry Williams, Ryan Withers, Karl Withers all 14 pts (might have to get some tips off you four). B.C - 'Kitchen Ladies' Cheryl and Di 12 pts. Thunderbolts Way Cafe - Jacki Nash, Miles Lawrence both 12 pts. Sadly for Trent Stackman he failed to score at T.W.C. Vet Supplies - Raya Kirby, Tahlia Bird both 8 pts.

...

Nothing much has changed at the Walcha Golf Club after they held their AGM last Sunday where the majority of the committee were re-elected. President Allan Green has commenced his 16th term, Secretary Jenny Lisle her 17th, Treasurer Margaret Davidson her 15th, Handicapper Don Brooks his 15th, Captain Willy Brennan his 20th and Publicity Officer A.J Cross his 21st. Vice President Miles Archdale, Sue Partridge, John McCormack, Craig Morgan, Caroline Street and Don Brools remain as directors, whereas Michael Stackman replaces Neil Dark on the committee. Life members of the club Col Berry and Margaret Davidson were returned to their Patron positions.



Death Notice

FISHER: Nancy Elaine

5th March 2024

née Gibbs

Formerly of Walcha & Woolbrook

Beloved wife of Jack (dec).

Loving mother & mother-in-law of Greg & Meg,
Ken & Colleen and Geoff & Karen.

Loved grandmother and great-grandmother of her
family.

Aged 88 years

Privately Cremated.

A celebration for Nancy's life will be held upstairs
at the Armidale Bowling Club on the 28th March
2024 commencing at 10am.

Piddington's AFDA 6772 2288

Position Vacant

Stable Hand, Would suit young person. Part-time/
full-time. Apply to George 0427 018 493.

Public Notice

DR GENEVIEVE FREER

Phone 6777 2068 0429 668 583

Shoreline Oysters will be at the Farmers Markets
this Saturday.

Save the Date

25th May 2024 Trivia Night for Woolbrook &
District Progress Association.

For Sale

Laver pullets, all breeds, 20 wks. Delivered
Friday 22.3.24. Phone Jim 0428 194 105.

DJ'S SEASONED FIREWOOD - simple stuff,
buy it, burn it, keep warm. Bulk only 6m³ or 12m³
loads. Call Dave 0427 335 631.

Budgies \$15 each. Phone 6777 2338

Garage Sale

Saturday 16th March, 8am at the corner of Hill &
South Street.

Meeting

Walcha Junior Indoor Hockey AGM, Thursday
28th March, 5.15pm at Walcha Bowling Club.

**ADVERTISING
DEADLINE
4.30PM ON MONDAYS**



WALCHA LAW
SOLICITORS

Sophie Thomson | James Levingston

Conveyancing | Power of Attorneys
Wills | Estates | Traffic Offences

Local Firm - over 70yrs in the Community

02 6777 2066 info@walchalaw.com.au
walchalaw.com.au

INCORPORATING PATTERSON BYFIELD & BRYEN



Refrigeration and
Airconditioning Services

Coolrooms, Freezers & Airconditioning
Repairs, Installs and Services

Phone Paul 0481 245 061

**MOBILE-FIX
AUTO+AIR**

Mobile Repairer &
Airconditioning Specialist

Licensed Vehicle Repairer
Lic.No.46696 RTA Lic No. AU22616

PATRICK STAGE - WALCHA
Mob. 0428 780 077 Ph. 6778 0595



CHIROPRACTOR

K Samantha Goor

B.Sc. Anatomy (NSW) M Chiroprac (Macq)

Tuesday & Friday from 9.00am

6777 1340



CURTIS

MOWERS & SMALL ENGINES

- Mowers • Ride-ons
- Pumps • Chainsaws
- Whipper snippers
- Chain sharpening
- Bar dressing

SELLING New 30 & 40 Tonne Petrol Hydraulic
WOOD SPLITTERS

- Chainsaw chain • Pumps & Generators •

JAMES - 0488 020 762 (7 Days)

Nick Moore

PLUMBING & EXCAVATION SERVICES

WALCHA & SURROUNDING AREAS



Highly qualified and
experienced plumber
All aspects of Plumbing
and Gas Fitting
Wood heater installation
Roofing and Guttering
Gold License No 59555C

Nick 0418 691 306

nickmoore203@yahoo.com.au

Katy 0422 034 660



CPC SPRAYING SERVICES

- Boom and Reel Spraying
- GPS Fitted 4WD Small Truck

Phone Peter 0404 471 105

JK PACIFIC TILING

WALL & FLOOR TILING
WATERPROOFING

0419 972 129

Email: jake.kerby@hotmail.com
ABN: 76781656814 Licence no: 335540c

**A G W
RURAL CONTRACTING**

GPS Equipped boom spraying

Andrew Wauch 0427 549 748

New England IT

**ONSITE COMPUTER
SERVICE + SALES**

Tim Sutton 0414 874 523

SELF STORAGE

NORTH STREET - WALCHA
**VARIOUS SIZED SHEDS
SECURITY FENCED**

67773899 0428 653 307



Andrew: 0427 549 748

Toni: 0421 972 354

**STORAGE CENTRE
WALCHA**

20' Containers available for rent \$35 pw + GST
Secure Undercover parking for cars,
vans etc \$15 pw +GST

ANGUS 0427 787 332

Tree lopping
Tree removal
Truck & chipper
Bobcat
Post hole digger
Trencher
Woolshed cleaning
Stockyard cleaning



Scott Kermode

0427 100 889

**TREETOP
services**

treetopservices@bigpond.com

church notices



ANGLICAN

Holy Communion 7:30am & Family
Service 10:00am

Phone 6777 2543 or email:
walchaanglican@gmail.com

PRESBYTERIAN

Walcha, every Sunday 9.30am

Combined church Youth Group in the
Hall, every Saturday 5pm - 7pm.

All welcome. Phone 6777 2539.

CATHOLIC

Sunday Mass 10.00am

DISCLAIMER LETTERS TO THE
EDITOR are submitted on the condition
that The Walcha Telecottage as the
publisher of The Apsley Advocate may
edit and has the right to, and license third
parties to reproduce in electronic form
and communicate these letters. They
are published at the discretion of the
Editor and Board. The Apsley Advocate
is printed by The Walcha Telecottage,
PO Box 116 Walcha NSW 2354. Phone
6777 1111 Fax 6777 1112. The Walcha
Technology Co Operative Limited, the
Editor and Staff of this Newspaper have
published any article here-in in good faith
and bear no responsibility in respect to
the accuracy of the information contained
in such article. Any person or persons
publishing material in this Newspaper
do so in the knowledge that they shall
personally accept any responsibility for the
accuracy and other correctness of such
articles and also accept full responsibility
for the legal consequences if it be found
that the article contains any inaccuracies
in the contents of any such articles.

DEADLINE MONDAY 4.30PM Editor:
Anthea Macpherson. Advertising and
Sport: Rosalie Gibson, Megan Scrivener,
Emily Scrivener and Joscisca Matapakia.

Marchant

BROS. PTY. Est. 2000

WATER CARTING

DELIVERING
7 DAYS
A WEEK

WALCHA COUNCIL
CERTIFIED DOMESTIC
WATER CARTER
10,000 litre tank



A FULL RANGE OF AFFORDABLE TRANSPORT & EARTHMOVING
Dam construction/maintenance, stick raking, road building,
site prep, pipe laying and all timber work.

Check out our website for the full range of machinery,
attachments and services available

FIREWOOD AVAILABLE

Earthmoving and Heavy Haulage Transport
Jason 0427 490 487

02 6777 2024 marchantbros@bigpond.com
www.marchantbros.com.au

WALCHA

BOWLING & RECREATION CLUB

Thursday 14 12pm – Close

Ladies bowls from 9am
Social bowls from 12.30pm

Friday 15 2pm – Close

2.00pm BINGO

6.00pm Bistro

- Chicken and Garlic Prawn Parcels
- Breakfast for Dinner
- Mango and Prawn Fettuccine
- Bread of the week (Parmigiana Bread)
- Normal menu available, takeaway & delicious desserts

6.00pm Free Bingo

6.00pm Tickets for raffles

MEAT & VEG TRAYS

8.00pm Raffles & Members Draw

Saturday 16 11am – Close

6.00pm Bistro

Sunday 17 11am – Close

12.00pm Bistro

12.00pm

MEAT & VEG TRAYS

12-2pm \$5 schooners

Bistro Easter
**COLOURING
COMPETITION**
Now open
Ends 27 March

**MEMBERS
DRAW
\$250**

YOU MUST BE A MEMBER FOR
2023/2024 TO BE ELIGIBLE TO WIN

Sunday 17 March
**St Patrick's Day
LUNCHEON**
Try the Luck of the Irish
at our Sunday Meat Raffles
Drawn 1pm

Do you live in Walcha Shire?
If so you MUST be a member
to enter the Club
Social Membership \$15
Full Membership \$105
PHONE 6777 2077

FOR ALL YOUR EARTHWORKS
TRANSPORT AND ELECTRICAL NEEDS

ALL ASPECTS OF RURAL, COMMERCIAL & CIVIL WORKS



- Freight & Transport • Machinery Float • Stick Raking
- Road construction and maintenance • Trenching
- General Earthworks • Drilling • Mulching
- Dam maintenance and construction
- Erosion Control • Site Preparation • Electrical Works

Ian Notley 04188 29188 • Mark Notley 0422 637 686

www.eteservices.com.au



Wayne Hoy: 0427 281 060
Matthew Hoy: 0427 322 640
Aaron Bullen: 0409 776 340

**SPRAYING
SOWING**

**EXCAVATING
EARTHMOVING**

GPS & Auto Steer Equipped

- Komatsu PC300 Excavator
- Cat 324 Excavator
- Cat D6N Dozer
- 2000ltr Quikspray Trailers
- Casotti's
- 4 x4 Tip Truck
- 4x4 Trucks & Boomsprays
- Full auto Rate Control
- GPS & Autosteer
- 4x4 Tractors GPS Equipped
- 20 & 24 disc Williams Seeders
- Fencing & Rural Contracting