

THE APSLEY Advocate

CIRCULATION 1920 – P 02 6777 1111 F 02 6777 1112 wtc@walchatelecottage.com.au walchatelecottage.com.au

21 February 2024

2024 Walcha Show Special Event 4TH ANNUAL MERINO FLOCK EWE COMPETITION

On-farm District Tour and Judging
Friday 1 March

Ribbon Presentation Walcha Show
Friday 8 March

The top four flocks will have a
sample of ewes on display at
Walcha Show all day Friday 8 March

Enquiries

Angus Laurie - 0418 587 643

Hamish McLaren - 0429 772 778

Car-pool available on
Friday 1 March leaving from
Commercial Hotel 7:30am



Cattle this Friday



AuctionsPlus

A/c - JA & KD
Southeron

70 mixed sex Angus X
Weaners

D&D Searle assets

20 Angus X Cows and
Calves

Contact
Mat Larkings
0427 002 427

Tummel Female Dispersal next Wednesday at TRLX

The Tummel Hereford Stud and Lisle family have been synonymous with the Hereford breed for over 45 years. Chris lived and breathed outstanding cattle and would purchase ones he liked without hesitation. With the passing of Chris in September 2023, sadly this year marks the 68th and final year of the stud. The female herd will be dispersed on Wednesday 28 February at the Tamworth Regional Livestock Exchange (TRLX) from 11.30am. The sale will offer 215 lots, including heifers, cows and calves, commercial stock, stud sires and a semen sale. Chris always selected cattle that had an outstanding phenotype, with a focus on structure and carcass. These cattle had to be backed up by a maternal matron who was chocked full of proven performance and functionality.

Originally selling stud sires at multi-vendor sales, in 1985 Chris and his parents Gordon and Olga conducted their first on farm sale at 'Lochaber' in a purpose-built shed and sale ring. After Gordon passed in 2010, Chris continued these successful annual sire sales.

The family had many memorable years in the show ring. At the 1987 Sydney Royal Easter Show Tummel Proserpine won the under 24 month class and sold for \$44,000 – a definite highlight for the family. This trajectory of successful showing and selling continued at the 1991 Sydney Royal with Tummel James selling for \$20,000 and Tummel Ventriloquist for \$21,000.

Chris introduced Poll Herefords into the stud in early 2000's, realising the value of the poll's genetics. In 2023 at Tummel's 40th annual on-farm sale, Chris offered 34 bulls and secured a top price \$16,000 for Tummel Cash Up S043. Chris also attended the Guyra Show where he won Grand Champion Bull, and came home with the much-coveted Grand Champion of Wodonga, purchasing Glendan Park Soprano for \$45,000.

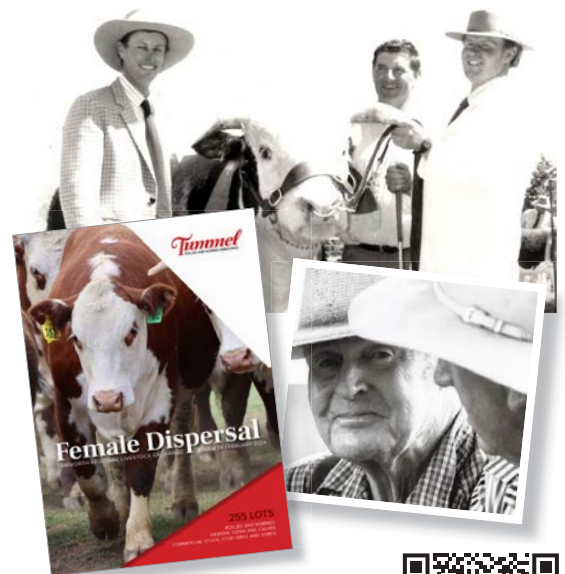
"As the final chapter closes on the Tummel Hereford Stud, I am genuinely excited to see how Chris' cows

continue to influence the breed into the future" said Sam Martin.

"The upcoming Female Dispersal Sale offers the potential for people to begin their own Hereford adventure or to consolidate their high-performance herds. From this I am sure numerous champions and high sellers will be produced" he continued.

Next week at TRLX, Phase 1 of the Tummel Dispersal will be an opportunity for Hereford breeders to purchase high quality females, both horned and polled, that have been bred and selected over four decades.

Phase 2 of the dispersal will be held on-property at 'Lochaber', on Tuesday 23 July, with 40 quality stud bulls on offer.



Top: Chris (far right) had many a success in the Show Ring. Inset: Chris Lisle. Scan the QR code to view or download the Female Dispersal sale catalogue.



ORDER YOUR SEED NOW

- Custom permanent pasture mixes
 - 1 and 2 year Ryegrass
 - Limited amount of Oats



6 Aberbaldie Road Walcha
Phone 6777 2588 www.wvs.com.au



OK EARTHMOVING

Specialising in road construction & maintenance

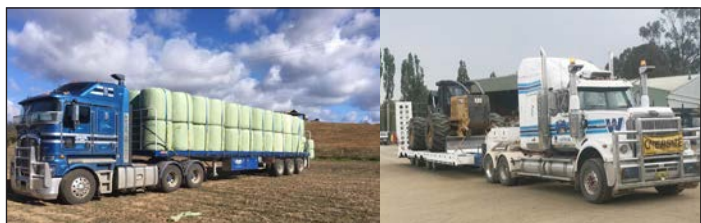
• Stickraking • Dam building • Erosion works



Bulldozers • Excavator • Tip-truck • Vibrating Roller

PH 6777 7430 FAX 6777 7448

PETER O'KEEFE: 0429 944 821



45ft flat top • 45ft single deck cattle float • 26mtr B Double
19mtr mini B Double • Low Loader available for hire



BRIAN
Smith
**TIMBER
TRANSPORT**

Call us for
your large
Transport
needs

WALCHA
02 67772126

Bonnie Smith 0429 772 077
Brian Smith 0427 780 216

around the traps



By SIMON NEWTON

Edging closer to Autumn you could say we have nearly finished with the hot weather as the last week has been ideal temperature with the cooler nights just starting to creep in. Rain has been about as well and once again the storm activity has been extremely patchy. I'm not sure what Woolbrook has done right this year, but they seem to catch every storm that rolls into the district, and it looks a picture. Falls of 10-50mm of rain fell in parts of the district over the weekend which didn't affect the Walcha Antique Machinery and Truck Show. By all reports it was bigger and better than the previous years and it had a great turn out.

Every time you turn the TV or radio on now we hear that crime is extremely bad throughout the larger towns and metropolitan areas with thieves becoming more brazen by the day. People are no longer safe in their own homes and the escalation of people committing these crimes and videoing them is a concerning trend. Sadly, Walcha is not sheltered from crime due to our location with thieves breaking into town businesses and cars just last week. People need to be vigilant and look after your belongings, leaving your vehicle unlocked, which I know used to be ok in this town is no longer. Keep the local police and your neighbours informed of suspicious behaviour.

The Rural Commodity Index has risen to levels not seen since last May after cattle rose nearly 60% in value since its low in October 2023. The rise in the value of cattle has underpinned the lift in the rural commodity index, coupled with the rise in lamb and dairy. These rises have come on the back of a better than anticipated season and exports kicking the year off in strong fashion with demand up. The RBA is still tipped to hold its current cash rate until the end of the year with murmurs of an interest rate drop possible towards the latter end of the year.

The Red Sea crisis on global shipping is still causing havoc and now it seems that it will hit everyone's pocket in one way or another. Global shipping prices have shot through the roof and in some cases between the likes of the USA and China, a dramatic increase in price of over 200 percent due to longer shipping transit times.

The first live export boat to Indonesia has set sail over the weekend after Indonesia finally granted 2024 import permits which has been delayed. Australia exported 60,000 head of live cattle to Indonesia in December, the high on record for a month for some time but we are led to believe the country has had its focus on its presidential and parliamentary elections as the most likely disruption to trade.

All eyes are on the USA beef market as a surge in imported grinding beef might be early signs of internal supply stress after their herd has sunk to a 40 year low. Grinding beef has lifted 10 percent since the start of the year, and 13 percent since the same time as last year. The biggest improvement has been the actual volume heading into the US which can only mean good things for Australian beef producers. Compared to 12 months ago the entire world has tidied up their cold storage stocks of beef and demand is gradually increasing for all proteins from Australia.

2,085 head of cattle were yarded on Monday in Tamworth, a reduction of 800 head which met a falling market and saw softer trends throughout the yarding. The only shining light was the light restocking steers that nearly held firm and sold to 412c/kg while the heifer portion was down by as much as 30c/kg. Yearlings sold to softer trends while feeder weight steers topped at 358c/kg and feeder heifers back 20c/kg to sell to a top of 305c/kg. Heavy kill steers made to 295c/kg, while the cows market held relatively firm and topped at 259c/kg. Heavy mutton topped at \$68 while light mutton struggled to attract much competition at all.

7,300 sheep and lambs were yarded in Tamworth with a large consignment of store lambs yarded from multiple producers and topping at \$95. The lamb market softened with trade weight lambs sold to a topping at \$140 while heavy export made to \$186.

Jacob set for a rollercoaster ride around the world

After completing his University degree in film making and production at UNE, local Jacob Hunt headed to Sydney to work, and further his career. Little did he realise at the time this would lead him on the trip of a lifetime taking him around the world making films about the best rollercoasters in every country.

Jacob landed a position at Luna Park as a ride operator and then as a team leader and this is where he developed a passion for rollercoasters of all shapes and sizes. "It became a big hobby of mine, and I started a YouTube channel on rollercoasters which now has 2000 subscribers," Jacob said.

Jacob will set off on this adventure on 4 March, flying firstly to Singapore with a stopover to ride the best rollercoaster on this small south-east Asian island before jetting off to Europe.

"I am going to base myself in Ireland and travel throughout Europe during the year to tick off rollercoasters country by country."

To tie in with this adventure, Jacob has secured a job at a theme park in Ireland, so he will be able to get some inside information as to where the best rollercoasters are in each European country.

Jacob would really like to encourage anyone who is interested to



follow his YouTube page: *Maloneys Coasters*, as he will have polls for each country so you can vote for your favourite rollercoaster and follow his journey. "I have some rollercoasters up on YouTube for the coming months so you can cast your vote now," he said.

Like a true film maker, Jacob has his camera gear packed and will be documenting his journey and also placing it on YouTube. "I really like to travel and will document not only the theme parks, but also my experiences of travelling in each country."

The 25 year old has already ticked off two of the world's 197 countries, having ridden a rollercoaster on the Gold Coast, as well as travelling to New Zealand last week to ride a rollercoaster on the North Island. "That was a fun and interesting trip, I met a guy who designed and made a rollercoaster in his backyard (*pictured*)."

For now, Jacob is back to the planning table, getting documentation finalised before heading off on this solo mission. He has no set time frame to complete the worldwide rollercoaster ride, we wish him well and look forward to following his adventures via his films on YouTube.



Stock and Property Watch

www.nutrienharcourts.com.au

PRELIMINARY NOTICE

CLEARING SALE

"ELLANDONAN"

PROPERTY SOLD

SUNDAY, 17TH MARCH 2024

AT "ELLANDONAN", 1007 BARK HUT ROAD, WALCHA

Outside vendors invited

CONTACTS

Miles Archdale 0428 660 326
Simone Newton 0467 660 320
Bruce Rutherford 0428 660 328
Mathew Larkings 0427 002 427
Dan Coulthurst 0419 879 793

AUCTION

RARE OPPORTUNITY

"GREEN HILLS"

160 Aberbaldie Rd Walcha 2354

68.36 ha / 168.9 ac

Just minutes from the centre of town
Building entitlement – Outstanding home sites
Highly desirable east and north easterly aspect
Magnificent undulating productive country
Basalt & trap country – supered pastures
Watered by dams – three paddocks

Formerly part of "Red Hill"

**Such a rare opportunity to purchase
a parcel of land so close to town**

AUCTION

**Wednesday 27th March at 11am
at Walcha Vet Supplies**

Inspections strictly by appointment

NUTRIEN BOULTON'S 6777 2044
Bruce Rutherford 0428 660328

Shalimar White Suffolk Stud Uralla

Registered White Suffolk **RAMS for SALE**

Excellent quality | 18 months old
| Ready to join | Brucellosis accredited free

\$600 plus GST

Call Joe van Eyk on 0417 614 755
"Windee" 404 Gostwyck Rd

New ceiling for the Museum

From Jane Morrison

The Walcha Historical Society had a dilemma. How to replace the ageing, discoloured, stained calico ceiling in the two front rooms and hallway in the Museum Building?

Apart from the calico being over 60 years old, our uninvited guest possum had thrown a party in the roof. He/she used the calico as a trampoline and public convenience which left it even more stained, and torn from its tacks.

We purchased the necessary 28 metres of fabric and our industrious ladies cut it to size and sewed it down the centre to fit the rooms. However, we were left with the problem of how to get it installed. (Our current workforce ranging in age from 74 to 94 years young).

Over the hill came the answer in the form of the students from Back Track, based in Armidale. It took two days and two groups of young, able bodied girls and boys to achieve what we could not. The squads took down the old calico, swept up and placed all the rubbish (plenty of it) in our trailer. They then had the task of lifting the calico up and stapling it to the rafters. Not an easy task as the calico was quite heavy. Milo was wonderful with his stapling skills. The workers left a very tidy workplace when they left.

They could not do enough for us. They were polite, inquisitive, interested in the exhibits and in our members. It was a pleasure to have them so we fed them well and they appreciated it. Those who had not completed their school work were able to do so onsite with Nicki their teacher and her travelling office. We would highly recommend them for any community project.

It was sad to see them go.

Thank you again to the Back Track students and their mentors for their wonderful work.

WANTED

Your feedback on weeds

**By Scott Kermode,
Walcha Councillor and Delegate Councillor to the
New England Weeds Authority**

As we are nearer to the end of weed season than the beginning, I thought I would write an article to impart some information and request some feedback regarding the role of council and the New England Weeds Authority (NEWA) of which Walcha Council is a member. In simple terms every council in the state is responsible for control of weeds, noxious or otherwise, within their respective areas. The level of control is dictated by the council themselves, the NSW Department of Primary Industry and legislatively by the Biosecurity Act. Some weeds are more important than others and that importance is monitored by several levels of government and committees. For example, a weed like Coolatai Grass in the Inverell area is well established and has a relatively low economic impact as opposed to Chilean Needle Grass in the Walcha LGA. Chilean Needle Grass in the Walcha LGA is rare but its impact if it became established would be disastrous. Noxious weeds are prioritised by region and not by LGA.

In terms of the NEWA coverage area Walcha is a bit unique, we have largely an agriculturally based economy, very few small holdings and are largely free of the very significant weeds that infect other councils. Weeds such as Chilean Needle Grass, Serrated Tussock and nasty water weeds. If we are not vigilant to weed incursions a large price will have to be paid.

Walcha Council delegated the responsibility for administering and enforcing the Biosecurity Act to a County Council many years ago. That County Council is now called The New England Tablelands (Noxious Plants) County Council trading as The New England Weeds Authority (NEWA). NEWA has four constituent councils, Armidale Regional Council (ARC), Walcha Council, Uralla Council, and Glen Innes Council. Representation on the County Council goes like this: ARC three councillors, Walcha, Uralla, and Glen Innes get one each.

Most councils in the state are not members of a County Council. Since Walcha Council delegated its responsibilities years ago many things have changed. There has been an Armidale/Guyra merger; Glen Innes has joined; statutory compliance has exploded; and the representative make-up of the County Council has changed. Many of the efficiencies which existed in the past no longer exist. All NEWA staff are based in Armidale and have been for over a decade.

Since Walcha's weed functions are delegated to NEWA, it is the job of NEWA to control noxious weeds on all council land including fenced roadsides, streets and parks. For this service Walcha Council contributes around \$100,000 to NEWA each year. In addition to this Walcha Council also engages NEWA to do private works which is the spraying of non-noxious weeds in council areas. These are things like spraying Bindiis on the ovals, weeds in the cemetery, depot and landfill. This has traditionally been in the region of \$50,000 per year. The state government also contributes to NEWA for property inspections under the Weeds Action Program (WAP) the Walcha share of this amounts to roughly \$100,000 making the total NEWA take from the Walcha LGA circa \$250,000 annually. Every property in the LGA should be inspected at least once every five years to meet WAP requirements.

NEWA has just about finished building a new \$2 million depot at the Armidale airport industrial area. It must be noted that NEWA has been housed in a very small non-compliant corner of the ARC depot along with a small office area in town also owned by ARC. However, I have been opposed to the process involved in the decision making to build the new depot. I believe that the cost benefit analysis was not done at all, or not sufficiently. I also strongly believe that the benefit to Walcha is very questionable to non-existent.

It is my opinion as Walcha's current councillor to NEWA, a landholder and a former employee of NEWA, that we have not been getting value for money. I would welcome the views of ratepayers – both positive and negative. How long since you've been inspected? Was the biosecurity officer helpful? Do you think the roadsides have been sprayed adequately, is the service getting better or worse? I'd like to know. Could Walcha Council do a better job on our own? Let me know your opinion via email: skermode@walcha.nsw.gov.au or give me a call (evenings are best) 0427 100 889.

Busy start to the year at Niangala Public School

Niangala Public School has had a wonderful start to 2024, welcoming five Kindergarten students this year.

Charney, Chyler, Elsie, Holly and Joey have enjoyed their first few weeks and are having fun and are busy learning about their new school routine.

On Friday 9 February Niangala students attended the Wild Rivers Alliance Swimming Carnival at the Walcha Pool.

A fun day was had by all children at this local small schools' carnival, with students from Woolbrook, Yarowitch and Niangala attending. Niangala Public School would like to thank Yarowitch Public School for organising and hosting the day.



Above, pictured from left: Niangala PS Kindergarten students Holly, Charney, Joey, Elsie and Chyler. Right: Chaise, Valerie and Chaise at with their swimming carnival ribbons. Below: Niangala students enjoyed a great day at Walcha pool.



Walcha Business Networking Group starting up

With experience in business support and development, Fiona Barden, co-owner of Wood we Create, Walcha, is keen to start a networking group for local Walcha businesses. A place to share ideas, explore opportunities and build support.

Kicking off the new group on Tuesday February 27 from 4.30pm, at the Woodturning Gallery (32w Fitzroy Street, Walcha), Fiona is keen to bring together businesses of all types, initially for an informal gathering to start networking and share ideas. Sharing on what's working and what's not from a business point of view, along with exploring collaborative ideas to build successes for business and community will be a key feature of this first meeting.

If you can't make it, because we know there is not one time that suits all businesses, please share your ideas, and let Fiona know your interested and what sort of time suits you best. The aim is to build this into a regular business network. You can RSVP or provide feedback to Fiona by text on 0429 690 679 or email at fionaebarden1704@gmail.com.

Toys for treatment helping the needy

Samantha Goor was thrilled with the support she received from the Walcha community for her annual Toys for Treatment Day in December. Samantha is pictured with a Salvation Army volunteer delivering the toys and generous donations before Christmas to the new Salvation Army Store on Bridge Street West Tamworth. The cash donations Sam received for ten dollar meal plates were distributed to people in the Walcha and district. Sam would like to thank the Walcha community for their outstanding generosity.



TWELVE HOMES FOR SALE

"EastGate Walcha"

Near new condition
\$220,000 - \$230,000 each

- 2 Bedroom, lounge/dining kitchen
- Bathroom, laundry
- Carport and fenced yard
- 2 x reverse cycle air conditioners
- Fully insulated
- Easy access ramp entry
- Most homes are fully furnished
- Landscaped
- Security gated C/W intercom
- Small site fee
- Delayed settlement if required



A LAND LEASE COMMUNITY is commonly known as an over 55's village. Generally, the resident community members have entered into retirement or have slowed their work pace. Some towns/cities attract these villages for various reasons, including lifestyle, community benefits, close to facilities, affordability and the list goes on.

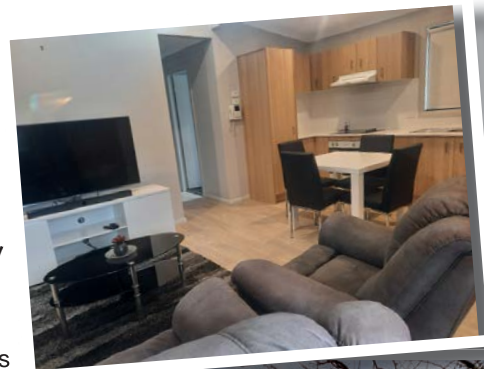
The resident community member purchases the home, generally from the operator and it must be stressed, it is the home only – no land is involved in the transaction – this is where the name land lease comes in and it is exactly that. The resident home owner pays a site fee to the operator for the use of the land. No rates are applicable.

Walcha has only one such Land Lease Community of twelve only homes – 'EastGate Walcha'.

Facilities on site include, secure entry gates with intercom connection, caravan storage, community kitchen/meeting hall with BBQ. Machinery/tools – no charge for use.

'EastGate' has been operating for six years as a rental community and all homes are now being offered for sale.

If required – the rental management can continue (for investors) or the operator/agent can offer delayed settlement for up to six months giving you the opportunity to dispose of the family home before making the move.



Scenic walk to shopping centre

DON'T DELAY. ENQUIRE NOW



Iain Mackintosh
www.imacka.com
admin@imacka.com
6778 3066 or 0416 160 180

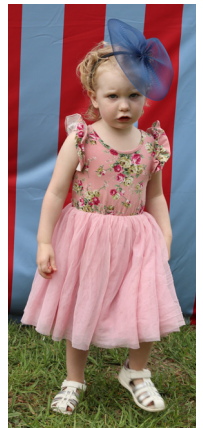


Ron Vincent
pittsons.com.au
6777 2000 or 0427 775 821

Walcha Races Kids Fashion winners



Top Left: Infants/Lower Primary Girls Phoebe Grills (winner) and Lilah Dark (RU). Above: Preschool Boys Harrison Taiki (winner) and Finn Lordanic (RU). Above Right: Upper Primary/Secondary Millie Laurie (winner) and Georgina Arundale Fuller (RU). Left: Best dressed family Samantha Bayley and Arizona. Right: Infants/Primary Boys Levi Williams (winner) and Harry Fletcher (RU). Far right: Preschool Girls Stella Dark (winner) and Ellie Lordanic (RU).



Pitt Son's

REAL ESTATE
& LIVESTOCK

SAM PAYNE 0428 667 404 | ANDREW BLOMFIELD 0428 667 402
RON VINCENT 0427 775 821 | TROY DAVEY 0427 157 557

FOR LATEST
UPDATES

Like us on
Facebook

6777 2000 | www.pittsons.com.au

SOMETHING SPECIAL



This is a lovely home
Worth inspecting

- Three bedroom all with built ins
- Open plan living
- New kitchen with dishwasher
- Lovely sunroom catching the sun all day
- Walk-in pantry
- New bathroom with shower and tub

\$495,000





It certainly has been a rough couple of weeks regarding locals and former Walcha residents leaving this world. One of nature's lovely ladies Ollie Wall, 1975 Walcha Roos and Group 4 premiership winning winger Robert Legge, 1975 Walcha Ladies Golf Champion Helen Henry, wife of Ian 'Wack' Henry and former Walcha Swimming Pool attendant Terry Eather, are no longer with us. Condolences to the family and friends of all four people and may Ollie, Rob, Helen and Terry all rest in peace.

...

On a lighter note anyone who read last week's WTGoss paragraph where a bloke named Jake swam two legs of his junior relay and then backed up for another in the senior relay may have been wondering who Jake was. Unfortunately Jake's surname Wellings was somehow left out. Sorry about that young fella.

...

What a magnificent spectacle the Walcha Antique Machinery and Truck Show parade was last Saturday morning, where plenty of cars, trucks, bikes and tractors took to the streets. I didn't count how many vehicles were in the parade but I wouldn't mind just one cent in the dollar for what they were all worth. Could be wrong, but the parade seems have gotten bigger and better this year. A big pat on the back to all the organisers for their efforts before and over the weekend.

...

Congratulations are in order for teenage opening batsman Ben Hall who registered an unconquered 118 runs playing for Walcha/Uralla 2nd Grade cricket team against Ex-Services at Peter Fenwicke Oval last Saturday. Batting throughout the innings Ben belted six along the ground boundaries, along with lifting three balls out of the ground. Good on ya Ben.

...

One thing local golfer Will Nicholls won't be doing anytime soon is playing off a handicap of 15, which was the case when he won a stroke

medal round last Sunday with a great nett score of 61. Unfortunately for Will he went off a week too early as the Championships commence this Sunday and is now in 'A' Grade off 9 instead of competing for the 'B' Grade title after having lost six shots in one hit. Well done Will.

...

Good luck to all Walcha Central School swimmers and Small School competitors who have qualified for the Armidale Zone PSSA Swimming Carnival to be held at Monkton Aquatic Centre this Thursday. Students who qualify for the PSSA North West Regional Carnival will return to Armidale to compete on 11 March. There are no zone trials for secondary swimming. For swimmers to qualify for the regional trials on Tuesday 12 March they must submit qualifying times that have been set.

...

Pakington Street the Walcha wonderdog won his first greyhound race in 13 starts when he cruised home at Gunnedah last week. He backed up at Dubbo on Monday night where he was checked a couple of times during the race before finishing fourth. To date Pakington Street has had 25 starts for four wins, four seconds and two thirds.

...

Calling all footy tipsters – the 2024 NRL season commences Sunday 3 March! Two games are scheduled for Las Vegas: Sea Eagles v Rabbitohs and Roosters v Broncos. The usual suspects are conducting tipping competitions including the Newie, BC and Apsley Arms and they are still taking names. Keep an eye out for any developments at Apsley Motors who ran a successful online competition last year.

...

Word has it that a local resident travelled to Dungowan to pick up some bales of hay recently, something he had done on a few occasions before. But for the first time our 'knight in shining armour' decided to travel back home via Port Stephens cutting. It was around that time he checked his load only to find four or five bails had escaped off the trailer he was towing. Wonder if the local builder, Apsley Street dweller, 'Molleydooker' golfer and former English wrestler will use the Port Stephens cutting route next time?



Lambs on the Hook

All lambs entered in the Hoof Competition at the Walcha Show will go on to be entered in the Hook Competition at Thomas Foods International Works, Tamworth. They will remain in the four classes: Shorn Export, Woolly Export, Shorn Trade and Woolly Trade. Lambs will be transported directly from the showground on Friday and slaughtered in Tamworth on Monday 11 March, with judging taking place in the chiller room that morning. Please note trade lambs must dress over 18kg to meet grid specifications.

Each 'Pen of Four Lambs' will be judged on their market suitability, including weight, colour, shape and conformation. This is an important part of the competition as it relates to the end product. Producers will be provided with a feedback sheet of results.

For more information contact Tim Norton, Chief Steward Lambs on the Hook on 0417 738 581.

Live Lambs

Looking to enter lambs in this year's Walcha Show? Lambs are in pens of four, with a maximum of two pens per class for each exhibitor. Lambs are to be sorted into their classes please. The Judge for this year is Austin Finlayson from Fletchers International.

The categories for the Fat Lamb Show are as follows:

- 1a. Four Prime woolly lambs, suitable for the trade, with a live weight of 40kg to 49.9kg
- 1b. Four Prime shorn lambs, suitable for the trade, with a live weight of 40kg to 49.9kg
- 2a. Four Prime woolly lambs, suitable for Export, with a live weight 50kg and over.
- 2b. Four Prime shorn lambs, suitable for Export, with a live weight 50kg and over.

All lambs to be sorted into their pens before 10.30am. After Judging all lambs will head to Tamworth to be slaughtered.

See you at the show. For further information contact Steven Wiggins, Chief Steward Live Lambs on 0419 933 622.

Merino Sheep

The 2024 Walcha Merino Sheep Show is shaping up to be a terrific event. Judging commences at 9.00am Friday, with our judge Mr Patrick Davis from Demondrille Merino Stud. The Davis Family produce heavy cutting, superfine wool at Murrumburrah NSW.

The Walcha Merino Sheep Show will be the last chance in the northern area for Studs to show their sheep before heading to The Sydney Royal. This year we are expecting great competition from many local studs from Ultra Fine, Superfine, Fine and Fine/Medium Wool sections. Participating studs from around the district include Westvale, Shalimar Park, Queenlee, Airlie, Glenburnie and Nerstane.

As a new concept this year the finalists from

the NSW Stud Breeders Local Commercial Ewe Competition will have a pen of ewes on display with the winners announced on the day. For further information please contact Jock McLaren, Chief Steward Merino Sheep on 0429 775 891.

Pet Show

The judging of the Pet Show will take place in front of the Poultry Building at 10.00am Saturday 9 March, not 12 March as listed in the Show Schedule.

Handlers must be children and the competition is open to all school students up to Year 10, including pre-schoolers.

Exhibitors must provide their own cage, pen or lead and can enter as many classes as they like. Puppies and kittens must have their eyes open and it is recommended that your pet's vaccinations be up-to-date.

Dog Jump

Due to popular demand, the Dog Jumping Competition will once again take place on Friday evening in front of the bar at the Show.

There are two divisions – 'Domestic and Working Dogs', and 'Poodles and Small Dogs', so get your pooches in training!

The best local dog will be sponsored by G Stier and AG Callister Partnership.

For more information contact Charles Norton, Chief Steward Dog Jump on 6777 3874.



SENIORS TOURNAMENT COMING UP

On 1 – 3 March people will come from far and wide to compete. More information and entry forms are available to download on the Walcha Tennis Association Facebook page, or pick up your copy from the Walcha Telecottage. Volunteers are needed to help in the canteen over the three days and goodies to sell in the canteen would be gratefully received. Contact Roxana Mathews 0455 501 482 or Trevor Gibson 0459 799 119 if you can help.

Round 1 of the 2024 Summer Comp was a washout. **Round 2** was played on Tues 13 Feb in pleasant conditions. Rodionova: Michael Lockyer, Katie Creighton, Andrew Blomfield and Trevor Gibson defeated Popyrin: Hyde Thomson, Craig Ireland, Adam Barillaro and Safina Ireland 33 to 24 in a tough battle. Gadecki: Todd Whillock, Dave Clarke, Kathryn Smith and Angus Fox defeated Birrell: DA Locke, Barry Hoy (floater), Graeme Wall and Steve Blake in a great close match 30 to 27. Purcell: Ed Blomfield, Pip O'Brien, Dennis Wall and Peter Tape defeated De Minaur: Dave Sweeney, Chris Bruce, Ella Habermann and Michael Luchich 26 to 24 in another close tussle.

WORKING BEE Sunday 25 February at 9.00am any help will be greatly received. The next Club meeting – Monday 18 March, 6.30pm all members are welcome to attend.

Wednesday Golf

Wednesday saw us welcoming two beginners, and we believe there are more to come which is fantastic. We welcomed Anne Martin and Jayann Jones to the fore. A par event was played for Marg Higgins trophy and the winner was Deb Richards with +2 on a countback from Alison Cameron on +2. Jenny Lisle won the front 9 with +1 and Pip Monie the back 9 with +0. Sweepstakes were won by Carl Street with -2 and Robyn Salt with -5. Nearest the pin on 3 Alison Cameron, and Vicki Heffernan best second shot on 18 which was in the hole. A nice birdie Vicki.

Today we are playing a Graham Betts stableford for Betty Borthwick's trophy, and it is also the Guyra Open, a 4BBB. Best of luck to those travelling to Guyra to play in that. Next Tuesday and Wednesday is the Glen Innes 2 day tournament and here at Walcha will be a Stroke, Putting and Monthly mug playing for a trophy donated by Lorraine Rennie.

At the Nineteenth

A stroke medal round for a trophy donated by club handicapper Don Brooks attracted 28 players last Sunday where the consistent Will Nicholls shot the best scratch score on the day, a six over par 76 which equated to an excellent 61 nett, the winning overall total.

He also won the B Grade mug and rounded up Michael Stackman 6 and 4 which included an eagle on the eighth hole to rob the 'Eagles Nest', sponsored by Dark's Plumbing of 7 balls.

A Grade went to Lee Fletcher on 73 nett whereas John McLaren carded a 64 nett to take out C Grade. Sweepstakes were claimed by Simeon Cross 66, Crichton Barr 68 and John McCormack 69.

In other match play contests, Simeon Cross snuck home 1 up against Willy Brennan, the same score Miles Archdale prevailed over Andrew Crawford.

NTP Lee Fletcher (3), Vic Coulter (9), Andrew Crawford (16) and Miles Archdale (18). Long drives sponsored by Tony 'Backhand Larry' Asmus were drilled by Michael

Stackman (A Grade) and Don Brooks (B) while no player could find the fairway in C Grade.

Putting competition: Mal Ballard won the 24 putts while the 'Pink Shirt' for most putts went to Alex Gill with 34 jabs. Last Saturday Crichton Barr accumulated 20 stableford points to win the weekly 9 hole event from runner up John McLaren on 19 points who also took out the NTP on 3. The second round of the New England Veterans Pennants was played at Uralla last week where Ross King was runner up in A grade on 37 points, Doug McDonald finished runner up in B Grade with 38 points, Bill Heazlett came runner up in C Grade on 35 pts and Jenny Lisle was the ladies A Grade winner with 33 pts just ahead of runner up Cheryl McDonald on 32 pts. Condolences to the family and friends of 1975 Walcha Ladies A Grade champion Helen Henry who left this world last weekend. This Sunday is the opening round of the 2024 Championships for a prize supplied by Captain Willy Brennan.

Flippers

The Walcha Swimming Club held their sixth swim meeting of the season last week where nine swimmers gained full points - Fergus Davies, Valerie Ham, Charlie Makeham, Isobel Mulligan, Ben Lockyer, Benji Provost, Eliza Nivison, Tom Lisle and Flynn O'Connell.

There were only two movers and shakers last week, Kix Brown who moved up from Frogs to Turtles and Anthea Taylor from Crocodiles to Dolphins.

Swimmer of the Week is Anthea Taylor who swam all her races during the afternoon and then stayed around to swim an individual medley in an attempt to qualify for the upcoming PSSA carnival. Anthea also swam two P.B's Tuesday last week which elevated her up a group into Dolphins.

A total of 81 P.B's were registered last week taking the season tally to 370. Despite only a few members of the Flippers lending a hand the club made over \$570 from the clean up of containers at the recent Walcha Races which equates to over 5,700 containers picked up. Well done to those few that did help out.

Cricket

Walcha/Uralla v Ex Services 2nd Grade

Ex Service	
N CHANDIMAH c D Boyd b E Blomfield.....	48
H IROSHAN c S Haslem b D Boyd.....	32
W ROBERT c L Fletcher b E Blomfield	31
N NISH c B Hall b J Wearne.....	6
C CLIFFORD lbw J Wearne.....	18
S MALINGA b E Blomfield	8
MD SAIFUL lbw J Grills.....	52
V NATH c B Hall b J Wearne.....	0
J SOMARATHA r.o J Wearne.....	7
K WEERASINGHE n.o.....	3
M CHANDIMAL n.o.....	2
Total 229. Extras 22. Bowling (overs/maidens/wkts/runs)	
M Harper 8-0-0-51, L Fletcher 2-1-0-4, D Boyd 5-0-1-22, J Grills 8-0-1-23, W Robert 8-0-0-51, N Nish 9-0-0-37, H Blomfield 9-2-3-33, G Youll 2-0-0-25.	

Walcha/Uralla

E BLOMFIELD c N Nish b L Clifford.....	4
B HALL n.o.....	118
J WEARNE b S Malinga	26
D Boyd c L Clifford b M Chandiman	9
S RAFFERTY c Md Saiful b L Clifford.....	25
J GRILLS c Bishop b H Roshan.....	23
B MANSFIELD c N Nish b H Roshan	0
G YOULL n.o.....	5
Total 216. Extras 8. Bowling (overs/maidens/wkts/runs)	
L Clifford 9-1-2-43, W Robert 8-0-0-51, N Nish 9-0-0-37, H Roshan 9-0-2-31, N Chandiamn 7-0-1-39, Malinga 3-0-1-15.	

Walcha/Uralla v Hillgrove 3rd Grade

Hillgrove	
P TOWNSEND c ? b C Mooney.....	0

L EASTWOOD c B Jex b P Mooney.....	0
H EASTWOOD c H Williams b C Mooney.....	8
T JONES c C Mooney b J Sherrin.....	8
B JORDAN c B Jex b J Sherrin.....	2
H JONES c B Jex b C Watts.....	10
C JORDAN c B Jex b B Ussher	14
S MAXWELL c N Swan b C Watts	12
A DULLAWAY b D Morley	11
A PARTRIDGE n.o.....	19
R VANDERVEER c & b D Morley	3
Total 105. Extras 17. Bowlings (overs/maidens/wkts/runs)	
C Mooney 4-1-2-8, P Mooney 2-1-1-6, J Sherrin 6-0-2-18, C Watts 10-2-2-21, H Ussher 4-0-0-10, M Tasik 3-1-0-5, D Morley 4-4-0-16, B Ussher 3-0-1-11, N Swan 3-0-0-8.	

Walcha/Uralla

C MOONEY c ? b A Partridge.....	11
H USSHER b L Eastwood	0
H WILLIAMS b L Eastwood	4
D MORLEY c ? b L Eastwood	2
N SWAN b A Partridge	4
P MOONEY b A Partridge	17
B USSHER c ? b S Maxwell.....	5
J SHERRIN b C Jordan	4
C WATTS b C Jordan.....	7
M TASIK c ? b C Jordan.....	10
B JEX n.o.....	1
Total 79. Extras 10. Bowlings (overs/maidens/wkts/runs)	
S Marwell 7-0-1-26, A Dullaway 7-1-1-15, A Partridge 8-2-12, L Eastwood 5-2-3-6, C Jordan 3-2-0-3-12.	

Walcha/Uralla were defeated in both grades. Here in Walcha, Ex Services batted after winning the toss setting a total of 229 for the loss of nine wickets.

Wicket takers for the hosts were Ed Blomfield 3/33, Josh Wearne 3/37, Daniel Boyd 1/22 and Jay Grills 1/23. Walcha/Uralla fell just short in their run chase after they scored 216 runs for the loss of six wickets off their allotted 45 overs.

Openers Ben Hall scored an unbeaten 118 after he batted right though the innings which included six boundaries and three maximums. Also contributing to the total were Josh Wearne 26 Shannon Rafferty 25 and Jay Grills 23.

At Uralla batting first Hillgrove set the homeside an assignment of 105 runs after they were dismissed in their 40th over.

Four Walcha/Uralla trundlers took a brace of wickets, each opener Cameron Mooney 2/8, David Morley 2/16, Jacob Sherrin 2/18 and Chris Watts 2/21 while Peter Mooney 1/6 and Ben Ussher 1/11 picked up scalp each. In reply the hosts were bundled out for 79 in their 31st over after Peter Mooney top scored with 17 whereas opener Cameron Mooney 11 and Matt Tasik 10 were the only other batsmen to reach double figures.

Bowls

Dad's Army: Six bowlers played a game of triples on Thursday. Baz, made up the teams and we all enjoyed a great game and as the result showed he did a great job. The final score was 16-15 to Barry Kliendienst, Geoff Salt and Eric O'Keefe over John Watts, Peter Hayes and Brian Goodwin.

Twilight: Some very close results. Once again we had plenty of floaters playing. Two of these helped team seven play a draw against their opponents six all and winning four ends each.

Ladies Bowls

Last Thursday ten ladies attended bowls and played a game of pairs and a game of triples. The results being in the pairs Wendy Moore and June Hayes had a convincing win over Phyllis Hoy and Esther Hunt and triples Janice Rizzi, Debbie Richards and Pam Makeham won 15-7 against Carmel Ryan, Lyn Burnell and Marg Tickle.

Reminder – Guyra Presidents Day is 27 February. The sheets are on the notice board for the Club Championships with nominations closing 3rd March. They will start on the 14th March with the Minor Singles.



Funeral Notice

LEGGE: Robert Alfred

Passed away Wednesday
14th February 2024

Aged 71 years.

Loving husband of Lorraine.
Adored father and father-in-law of
Ben & Maddie.

Cherished grandfather of Jack,
Maggie and Emma.

Dearly loved brother and
brother-in-law of Di & Bill.

Much loved uncle of Tracey,
Michael & Melissa (dec).

Relatives and friends of the late Robert
Legge are warmly invited to attend
his funeral.

The cremation service is set to commence
at 11am, Wednesday 21st February 2024,
at the Alston Memorial Chapel 35 Workshop
Lane Tamworth.

Burke & Douglas Funerals

Public Notice

DR GENEVIEVE FREER

Phone 6777 2068 0429 668 583

Splita ir Electrical and Air Conditioning
will be closed until further notice due to
serious health concerns.

McDonalds Gas will be closed 22 Feb to 3
March. No deliveries or pick ups during this
period.

WALCHA COURSES

New England Community College

- Combined Food Safety Supervisors
Level 1 & 2 – Tuesday 5th March 2024
- Prepare and Serve Espresso Coffee –
Wednesday 6th March 2024

Course will be held at Walcha Vets Supplies,
6 Aberbaldie Rd, Walcha NSW 2354

For any inquiries please
contact the Guyra Office
on (02) 6779 2132,
admin@gala.org.au



Meetings

Walcha Golf Club AGM, Sunday 10 March
9:30am at Golf Club.

Walcha Support Group Thursday 29
February in WCCC Rooms, Middle Street
Meditation from 12:30pm. Meeting begins at
1:30pm – All Welcome.

Walcha Pony Club AGM Thursday 29
February, 7.00pm at Apsley Hotel.

For Sale

Border Leicester Rams

Two Tooth

Brucl Tested

Chain O Pond Bloodlines

\$495 including GST

Oakburn Pastoral Company

Ph Cameron 0459 177 005

PRELIMINARY NOTICE



2nd Annual New England Twilight Weaner/Feeder/Breeder Cattle Sale

Thursday 28 March 6pm AuctionsPlus

Entries invited and highly recommended



CONTACTS

Miles Archdale 0428 660 326
Simone Newton 0467 660 320
Mathew Larkings 0427 002 427
Dan Coulthurst 0419 879 793



thumbs



- 👍 To the Walcha Antique Machinery and Truck Show it was fabulous and entertaining. The Street Parade was an absolute ripper. Well done to the organising committee and volunteers. What a fantastic event for our town.
- 👍 To the Oxley Highway being opened for the weekend! It sure made a difference to our local businesses.
- 👍 To Walcha Community Care staff for the trip to Glen Innes. We loved the Museum and Information Centre and the standing stones. A great day.
- 👍 To Dallas at Richo's Hardware for his professionalism and excellent service.
- 👍 To Jess and Meg at Community Care for helping with my urgent transport. What a wonderful service.
- 👍 To the young children in Walcha who have helped me a couple of times. One was a young man who carried a parcel for me before Christmas and to the young man who picked up my change and gave it back to me.

Contributions will be received in person, by phone or email and must be accompanied by your name and contact details. They will be printed at the discretion of the editor.



Nick Moore PLUMBING & EXCAVATION SERVICES WALCHA & SURROUNDING AREAS



Highly qualified and experienced plumber
All aspects of Plumbing and Gas Fitting
Wood heater installation
Roofing and Guttering
Gold License No 59555C

Nick 0418 691 306
nickmoore203@yahoo.com.au
Katy 0422 034 660

STACES FAST FREIGHT

Delivering
Tamworth – Walcha
0429 608 409



ENGINEERING

John Wall

• Stock floats • Feeders • Sheep & cattle yards • Steel framed sheds & mobile welding

6778 0588 • 0428 778 087



CURTIS

MOWERS & SMALL ENGINES

- Mowers • Ride-ons
- Pumps • Chainsaws
- Whipper snippers
- Chain sharpening
- Bar dressing

SELLING New 30 & 40 Tonne Petrol Hydraulic WOOD SPLITTERS

• Chainsaw chain • Pumps & Generators •

JAMES – 0488 020 762 (7 Days)

M L MASSAGE THERAPY

Remedial and Sport Massage

MADDIE LANCE

TUES TO FRI 9AM - 6:30PM

0432 635 994



MOBILE
TREATMENTS
AVAILABLE



CPC SPRAYING SERVICES

- Boom and Reel Spraying
- GPS Fitted 4WD Small Truck

Phone Peter 0404 471 105

STORAGE CENTRE WALCHA

20' Containers available for rent \$35 pw + GST
Secure Undercover parking for cars,
vans etc \$15 pw + GST

ANGUS 0427 787 332

Tree lopping
Tree removal
Truck & chipper
Bobcat
Post hole digger
Trencher
Woolshed cleaning
Stockyard cleaning



Scott Kermode
0427 100 889

TREETOP
services

treetopservices@bigpond.com

WALCHA HIRE
Andrew: 0427 549 748
Toni: 0421 972 354

CHIROPRACTOR

K Samantha Goor

B.Sc. Anatomy (NSW) M Chiroprac (Macq)

Tuesday & Friday from 9.00am

6777 1340

**MOBILE-FIX
AUTO+AIR**
Mobile Repairer &
Airconditioning Specialist
Licensed Vehicle Repairer
Lic No. 46696 RTA Lic No. AU22616
PATRICK STACE – WALCHA
Mob. 0428 780 077 Ph. 6778 0595

**A G W
RURAL CONTRACTING**
GPS Equipped boom spraying
Andrew Wauch 0427 549 748

DISCLAIMER LETTERS TO THE EDITOR are submitted on the condition that The Walcha Telecottage as the publisher of The Apsley Advocate may edit and has the right to, and license third parties to reproduce in electronic form and communicate these letters. They are published at the discretion of the Editor and Board. The Apsley Advocate is printed by The Walcha Telecottage, PO Box 116 Walcha NSW 2354. Phone 6777 1111 Fax 6777 1112. The Walcha Technology Co Operative Limited, the Editor and Staff of this Newspaper have published any article here-in in good faith and bear no responsibility in respect to the accuracy of the information contained in such article. Any person or persons publishing material in this Newspaper do so in the knowledge that they shall personally accept any responsibility for the accuracy and other correctness of such articles and also accept full responsibility for the legal consequences if it be found that the article contains any inaccuracies in the contents of any such articles. **DEADLINE MONDAY 4.30PM**
Editor: Anthea Macpherson. Advertising and Sport: Rosalie Gibson, Megan Scrivener, Emily Scrivener and Joscisca Matapakia.

church notices



ANGLICAN

Combined service with Presbyterians at St Paul's Presbyterian Church **9:30am**
(note changed time)

Phone 6777 2543 or email:
walchaanglican@gmail.com

PRESBYTERIAN

Walcha, every Sunday 9.30am

Combined church Youth Group in the Hall, every Saturday 5pm - 7pm.
All welcome. Phone 6777 2539.

CATHOLIC

Sunday Mass 10.00am

THE APSLEY Advocate

Advertise here!

Like to advertise on our Trade Page?
Small box ad 30mm h x 63mm w \$30.00 p/wk
Large 54mm h x 63mm w \$40.00 p/wk

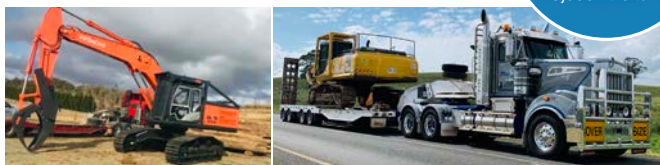
Call us today on 6777 1111

Marchant Bros. Pty. Ltd. Est. 2000

WATER CARTING

DELIVERING
7 DAYS
A WEEK

WALCHA COUNCIL
CERTIFIED DOMESTIC
**WATER
CARTER**
10,000 litre tank



A FULL RANGE OF AFFORDABLE TRANSPORT & EARTHMOVING
Dam construction/maintenance, stick raking, road building,
site prep, pipe laying and all timber work.

Check out our website for the full range of machinery,
attachments and services available

FIREWOOD AVAILABLE

Earthmoving and Heavy Haulage Transport
Jason 0427 490 487

02 6777 2024 marchantbros@bigpond.com
www.marchantbros.com.au

WALCHA

BOWLING & RECREATION CLUB

Thursday 22 12pm – Close

Ladies bowls from 9am

Friday 23 2pm – Close

2.00pm BINGO

6.00pm Bistro

- HOMEMADE PIES
- SWEET & SPICY CHICKEN STIR FRY
- GRILLED OCEAN TROUT

• Normal menu available,
takeaway & delicious deserts

6.00pm Free Bingo

6.00pm Tickets for raffles

MEAT & VEG TRAYS

8.00pm Raffles & Members Draw

Saturday 24 11am – Close

6.00pm Bistro

Sunday 25 11am – Close

12.00pm Bistro

12.00pm

MEAT & VEG TRAYS

12-2pm \$5 schooners

SOCIAL BOWLS

Every Thursday.
Names 12:30 for 1pm
All welcome

**MEMBERS
DRAW
\$50**

YOU MUST BE A MEMBER FOR
2023/2024 TO BE ELIGIBLE TO WIN

SUNDAY ROAST

25th February
Show your Seniors Card
for a 10% discount

Do you live in Walcha Shire?
If so you **MUST** be a member
to enter the Club

Social Membership \$15

Full Membership \$105

PHONE 6777 2077

FOR ALL YOUR EARTHWORKS
TRANSPORT AND ELECTRICAL NEEDS

ALL ASPECTS OF RURAL, COMMERCIAL & CIVIL WORKS



- Freight & Transport • Machinery Float • Stick Raking
- Road construction and maintenance • Trenching
- General Earthworks • Drilling • Mulching
- Dam maintenance and construction
- Erosion Control • Site Preparation • Electrical Works

Ian Notley 04188 29188 • Mark Notley 0422 637 686

www.eteservices.com.au



LINMAC ENGINEERING

IF YOU NEED IT – We make it!

CUSTOM TRAYS AND TIPPERS



- Customer consultations to make sure we build to YOUR individual specifications
- Sandblasted and powdercoated
- Toolboxes, timber floors, tipper trays, water tanks ... whatever you need!

AUTHORISED HUSQVARNA DEALER



Check out our new facebook page:
Linmac Engineering Walcha

211N Pakington Street WALCHA
Phone 6777 2822 Email enquiries@linmacengineering.com.au