

THE APSLEY Advocate

CIRCULATION 1920 – P 02 6777 1111 F 02 6777 1112 wtc@walchatelecottage.com.au walchatelecottage.com.au

7 February 2024

And we're off and racing!

By Jim Nivison – Chairman Walcha Jockey Club

Nominations for the 139th Adcock Partners Walcha Cup Carnival have far exceeded expectations of the Walcha Jockey Club. 176 horses have been nominated for the eight race program on Friday and 75 for Saturday's racing with Walcha again being allocated a Showcase meeting by Racing NSW. Increased prizemoney has definitely assisted in bringing in fantastic nominations this year.

Despite the hot dry weather, the track and surrounds are looking good for our annual two day carnival thanks to the tireless work of Bill Fletcher and Brian Hoad in keeping the track and grounds watered.

This year sees the return of the Kids Day with Fashions in the Field, jumping castle, face painting, balloon artist, ice creams and a colouring competition. We are extremely grateful to Charlotte Lyon and Jess Williams for their effort in making this possible. Teamed with free entry for everyone through the gates on Saturday, the Jockey Club are hoping the community supports the Community Family Day at the Races.

Lance Partridge and his assistants have been busy organising foot races for both adults (15 years +) and children to add to the entertainment on Saturday. The races for children will range from 50 – 100 metres and be held after the Kids' fashion parade. The adults will go under the starter's gun after the first race with one mile to the finish line!

The Jockey Club will have undercover marquee seating available in the Members' Area, with anyone able to purchase tickets online or at the gate at a cost of \$30.

Walcha Town and Country Club have kindly organised a limited number of grazing boxes which are available to secure for \$55 (caters for two). These can be pre-ordered online at walcharaces.com and will be available for collection on Friday at the Races.

Walcha Carrying Company are generously sponsoring the Fashions in the Field on Friday

with prizes on offer for Best Dressed Lady, Gent and Couple. This year racegoers will be able to nominate themselves by attending the fashion parade on the Hill. Gents and couples will be judged following Race 4 and Ladies after Race 5.

The Lions Club will operate the bar and Rotary are again serving patrons with their delicious steak sandwiches and other culinary delights.

Walcha Jockey Club would like to express their gratitude to the community for stepping up and assisting them in getting the 2024 Race Carnival off the ground. The extra hands and support have made all the difference and we are excited about hosting the carnival which is a major event on the town's calendar.

All entry tickets are available at the gate, or if you would like to save time, online at walcharaces.com

Friday's race book will be available at the Walcha Newsagency on Thursday, or at the races.



FRIDAY

- FIRST RACE 1pm
- TICKETS available online. walcharaces.com
OR at the gate:
Adults \$20, Concession \$7, Undercover Marquee \$30.
- GRAZING BOXES \$55 (for two people) Order at walcharaces.com
- Walcha Carrying Co. FASHIONS. Be at the hill to enter: Best Dressed Gent and Couple after Race 4 and Best dressed Lady after Race 5.

SATURDAY

Family Day

FREE ENTRY!!

- FIRST RACE between 1.30-2pm
- Betts Transport FOOT RACE (15 yrs +) 1pm
- KIDS' DAY from 1pm rides, Kids' Fashions in the Field, foot races and more.

BOTH DAYS

- GATES OPEN 12pm
- FREE BUSES to and from the course from accommodation and licensed premises. Pickups from 12-2pm and return from 5pm

BBQ
CANTEEN
BAR



!! FEBRUARY SPECIAL !!

Grazon Extra 20 litre
\$610 inc GST

Offer available for February only.
Terms and conditions apply

Phone 6777 2588

WVS
WALCHA VETERINARY SUPPLIES



OK EARTHMOVING

Specialising in road construction & maintenance

• Stickraking • Dam building • Erosion works



Bulldozers • Excavator • Tip-truck • Vibrating Roller

PH 6777 7430 FAX 6777 7448

PETER O'KEEFE: 0429 944 821

40TH

WESTVALE MERINO RAM SALE



WEDNESDAY 14TH FEBRUARY
INSPECTION – 10AM
SALE – 1PM
AT “WESTVALE”, WOLLUN.

CONTACT:

LR & JE Blanch, “Westvale”, Wollun 2354.
6778 7321 or 0428 431 065
Will Church: 0447 812 508

AGENTS:

SCHUTE BELL BADGERY LUMBY
AUSTRALIAN WOOL & PASTORAL COMPANY
NUTRIEN AG SOLUTIONS
Supported by Virbac



around the traps



By SIMON NEWTON

The heat and humidity were nearly unbearable over the weekend and sadly any forecasted rain slipped south of us once again. Walcha is considerably dry in comparison to other areas, especially in a 20km radius of the town. Some people have been extremely lucky and are having an exceptional start to 2024 with over 100mm falling in areas south of town, but others haven't recorded a drop since Christmas. I keep saying it but winter is looking extremely tough once again for a lot of producers unless we can get a decent change in the next four weeks. I keep looking for nature rain signs and hopefully the old black cockatoos flying around home yesterday bring the rain. One thing that the lack of rain hasn't dampened is the excitement of kindergarten kids on their first day. I'm pretty sure they all would have worn their uniform to bed the night before.

The RBA are set to keep the interest rates on hold as they meet for the first time this year, as inflation comes in lower than expected. Household incomes have fallen to their lowest levels in nearly eight years as we have all been hit by the escalating cost of living, rises in interest rates and increased taxes due to wage lifts. The economy seriously has the making for a crash and things will get worse for everyone before they get better.

I spoke only last week about the issues faced on our east coast shipping ports between the Maritime Union of Australia and DP World which is one of the largest container freight providers. We are led to believe they have finally reached an agreement which will hopefully improve the dispatch and receipt of freight around the world. It's welcome news considering it's the best start to a year the Australian beef exports have had since the 2019 drought period. The USA has continued to be a strong consumer, buying double the volume compared to the same period in 2023. The USA cattle industry has reached its lowest level since 1951 due to their prolonged drought. The ramifications of the drought in the USA on their beef production may not be felt just yet until they start to rebuild as the feedlots have been able to fill the void to greater numbers on feed. Their rebuild means only good things for Australian beef as markets such as Japan, which we compete directly for, make us more competitive due to volume and pricing.

The cattle supply, especially in QLD and NT has really dried up due to the widespread rain. Numbers this week through NSW, especially Tamworth, Gunnedah and Inverell have nearly totalled 10,000 cattle through the fat sales on Monday and Tuesday. Tamworth has also yarded more than 12,000 store cattle through three store sales in just under a week. These numbers go to show just how dry it is through the Tablelands and Northwest. It also shows us that the better market is starting to drag a few numbers out while producers take advantage of a better market instead of risking waiting for rain.

Numbers swelled in Tamworth on Monday with agents yarding 3535 hd which has been the biggest fat sale yarding since the drought in 2019. Despite the lift in numbers the market remained firm to a shade dearer in places with restocking weaner cattle topping at 414c/kg for 248kg Angus steers. Feeder weight cattle were once again in hot demand with steers to feed averaging at 371c/kg, while the heifer portion averaged 331c/kg. Heavy grown steers to process topped at 330c/kg while cows remained fully firm and topped at 284c/kg. The sheep and lamb numbers swelled to 9000 hd with numbers doubling for both sheep and lamb numbers this week. A large draft of store lambs helped with the lift in numbers and topped at \$84 for the top of the draft, trade weight lambs sold to cheaper trends topping at \$148 while heavy export lambs topped at \$248. The mutton job sold to dearer trends on the heavier end with XB ewes topping at \$105, merino wethers to \$82.

The Fruit Shop closes this Saturday

Almost six years ago, In March 2018, locals Ross and Sophie Fletcher re-opened Walcha's beloved Fruit Shop on the corner after four weeks of it being closed.

What a transformation the building and business has taken over this six years, with the team opening the popular coffee window in 2019 and diversifying into selling bulk stock feed to farmers during the drought.

Early last year the couple made the decision to sell The Fruit Shop and focus on their farm and growing their family. Sadly the sale did not come to fruition and the tough decision to close was made. The last day of trading will be this Saturday 10 February, however the coffee window will remain open. "We will be focusing all of our energy on slinging brews as of Monday 12 February," Sophie said.

Sophie and Ross wanted to ensure residents had access to fresh produce and items not available at the supermarkets when they opened The Fruit Shop. They survived bushfires, floods and COVID. "COVID lockdowns were tough but the local support was outstanding and really demonstrated the



While no longer offering fruit and veg, Ross and Sophie look forward to brewing you a coffee or two

possibilities when everyone shops locally," Sophie commented.

Sophie believes there are a number of factors which have contributed to the slowing of business, with declining local support and Coles delivering to Walcha, which affects all local businesses. "Combine this with increasing freight costs, higher interest rates and declining stock prices. Local businesses are struggling and need the support of the community."

"Thank you to all our customers over the past six years for ensuring The Fruit Shop lived on and provided our community with fresh, seasonal produce."

"Thank you for ensuring locals had employment opportunities and training that will last a lifetime and for allowing us the privilege to get to know you all and create lasting friendships."

The coffee window will remain open, with the remainder of The Fruit Shop space being leased out. If you are interested in leasing the space please contact Peta at Boultons.

"See you all at the window for coffee soon."



Stock and Property Watch

www.nutrienharcourts.com.au

Investment Opportunity / First Home



This brick and tile home is a short stroll to the Central School

- Three good sized bedrooms, main with built ins
- Northerly facing lounge includes wood heating and reverse cycle
- Kitchen with walk in pantry, electric benchtop stove
- Dining flows through to the southerly sunroom
- The home has ramp access at the rear with a drive through garage
- The property has colour bond fencing for privacy, a garden shed, wood shed and tool shed
- The home is situated on a flat block

**For all enquiries please call
Peta Carter: 0407 350 781**

\$450,000



Nutrien Boulton's Walcha ■ 3n Derby Street Walcha ■ 6777 2044




45ft flat top • 45ft single deck cattle float • 26mtr B Double
19mtr mini B Double • Low Loader available for hire



BRIAN Smith
TIMBER TRANSPORT

Call us for your large Transport needs

WALCHA
02 67772126

Bonnie Smith 0429 772 077
Brian Smith 0427 780 216

Fundraising caps



From Betts Transport

Betts Transport's second round of fundraising hats have arrived. This year we are raising money for the *Make a Wish Foundation* and *Prostate Cancer Australia*. Hats will be for sale at \$45 each and we only have a limited number available.

To purchase a hat please:

1. Phone on 0427 775 804 or drop into Betts Transport, 305 Darjeeling Road Walcha
2. Or, call in and see the wonderful ladies in the office at Mountain Motors (NRMA), 18N Derby Street Walcha

Alternatively, if you wish to donate directly to the organisations please Message Deb Clare on 0427 775 804 and we will pass the link on to you.

Thank you for your kindness.

Summer get-together at Woolbrook

Woolbrook and District Progress Association held their AGM recently and welcomed the new Committee: President Tony Haling, Vice President Tim Laurie, Treasurer Jocelyn Denny, Secretary Janelle Smith.

The committee is supported by a willing group of local volunteer committee members. The Committee has been focused on community engagement over the last year with events held to promote community connections and wellbeing.

The next event is a 'Summer Get-together' on 17 February 2024.

This event will take place from 6.00pm at the Woolbrook AIF Hall and will include a BBQ and dessert. Cost is \$20 per adult, \$5 per child (5 – 12 years), with children under 5 years free. Please BYO Drinks and nibbles.

The evening will also feature ten Mystery Auction items up for bid. For bookings please call Belinda Laurie on 6777 5813.

We welcome all to join us and look forward to seeing you there.

BEEN A WHILE SINCE YOU REVIEWED YOUR FARM INSURANCE?

Contact us today to request a tailored farm insurance quote.

Keeping farmers farming

Join thousands of farmers making the switch to direct specialist agricultural insurer Achmea Australia.

Call 1800 724 214 or visit www.achmea.com.au

achmea 
Farm Insurance

“Helpful. Efficient. Timely.”
George MacDonald
Wallabadah NSW



Deb Maddox
FARM INSURANCE SPECIALIST
Tamworth region

REQUEST A QUOTE

1800 724 214
www.achmea.com.au

thumbs



- 👍 To the Committee for the Ingleba Hall renovations. What a great job.
- 👍 A big thank you to Scott Kermode of Treetop Services for pruning our trees and shrubs ... and cleaning up. A wonderful job.
- 👍 To the trucks who don't slow down in the 40kmh zone outside the Post Office. It is dangerous.

Contributions will be received in person, by phone or email and must be accompanied by your name and contact details. They will be printed at the discretion of the editor.



Why not become a Show Society member?

With the Walcha Show looming on 8 and 9 March, why not consider becoming a member?

Membership of the Show Society is not exclusive – it's open to everyone. Full membership is \$40 annually, which includes complimentary entry to the Walcha Show for both days for the member, their guest and 2 children. If you are single, membership is just \$20 and includes complimentary entry to the Show for 2 days. You can come and go as many times as you like. It also allows free entry into the competitions held in the main horticulture pavilion.

Membership is great value at \$40 for a family as gate entry each day for a family is \$30 (single adult \$15).

We have a great line up of entertainment again this year, more information on this soon.

If you would like to become a new member, please drop by the Show Office at the Showground between 10am and 1pm on February 13, 20 and 27, or from 10am – 4pm from 4 – 7 March. Simply complete a membership form and pick up your Show tickets. Any questions, please contact the Show Secretary, Dale, by email at walchashowsociety@gmail.com

Once you become a member, you will then be sent a membership renewal notice each year with various payment options to make it easy.

If you haven't already picked up a copy of this year's Show Schedule from various businesses around town, competition sections and entertainment for the Show can be found on the website walchashow.org.au or follow us on Facebook.

Daniel Kermode, President

Foot Races for young and old this Saturday at the Walcha Races

From Lance Partridge

The Adult event (one mile) will take place straight after the first horse race this Saturday 10 February. The race is open to all local, or local origin runners turning 15 years of age or over this year. Both men and ladies events will be run together.

We will meet at 1pm in the racing enclosure (horse parading area). We are still looking for more runners and will accept eligible runners until 1pm, which will allow competitors time to warm up before the race.

This year the children's foot race (sprints) will take place straight after the Kids Fashions in the Field which will be after 2pm.

We have four events organised: Preschool and Kindergarten, Infants, Primary, Secondary (14 years and under this year). Boys and girls events will also be run together.

We again have good prizemoney on offer for both the adults and junior races thanks to great sponsorship from Betts Transport.

Interested runners please contact:

Henry Williams0488 224 666
Steven Eveleigh.....0417 297 915
Lance Partridge0491 389 529

PROGRAM

Opens (15yrs +)
marshal at 1.00pm

Children's Races after
Kids Fashions in the Field.
Boys and Girls divisions in
each of the following:

Preschool/Kinder 25m dash
(Parents can accompany children)

Infants 50m dash
Primary 100m
Secondary 100m

Good luck and have fun!

Walcha Royal Cafe & Accommodation

**NIGHT DINING THIS FRIDAY
AFTER THE WALCHA RACES**

(Bookings preferred)

Cocktails & Beer on tap

Trading from 7am for breakfast

**Shalimar White Suffolk
Stud Uralla**

**Registered White Suffolk
RAMS for SALE**

Excellent quality | 18 months old
| Ready to join | Brucellosis accredited free

\$600 plus GST

**Call Joe van Eyk on 0417 614 755
"Windee" 404 Gostwyck Rd**

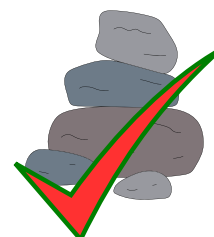


**Its Valentines Day next week....why buy ROSES
when you can buy ROCK!**

**Re-sheet that driveway today and give your loved
one a smooth drive home!**



**Rose are Red
Violets are Blue
Brooklyn Quarry
has the
rocks for you**



✉ SCOTT@BROOKLYNQUARRY.COM.AU

☎ 0434 011 570

📍 1643 OXLEY HWY, WALCHA RD. NSW
(BY APPOINTMENT ONLY)

🌐 WWW.BROOKLYNQUARRY.COM.AU

2023 Walcha Motorcycle Rally wrap-up

From Lisa Kirton – Tourism and Visitor Information Services Coordinator

Firstly, a huge thank you to the generous sponsors and volunteers of the Rally, the event would not be possible without their support. A full list of sponsors and supporters can be viewed on the website at www.walchamotorcyclerrally.com.au/sponsors

Now that the dust has settled from the Rally and Christmas and New Year period we would like to give some feedback regarding the event. The final report will go to the February Council meeting, but until that is released, we have the following information to share.

Donations to Community Organisations

The Walcha Motorcycle Rally Committee was recently able to hand over \$4,135 in donations to the Westpac Rescue Helicopter Service (WRHS) Support Group, which were the funds raised from the Rally auction. Auction items were kindly donated by rally exhibitors, sponsors and committee members. Rally attendees dug deep to support the service. Along with the WRHS stall at the Rally, a total of \$5,663 was raised for the service. WRHS Support Group member, Robyn Watts said “we couldn’t believe the amount raised at the auction – it was absolutely amazing!”.

BackTrack Youthworks is another incredible organisation that received \$478 of donations from generous attendees on the day, following

their entertaining dog jump and show.

The Walcha Golf Club do an excellent job of running the bar– with Miles Archdale playing a huge role in the event. The Golf Club received a donation of \$3000 for this assistance.

Stats and Facts

Attendees were well up from previous years. Over 120 riders took part in the street procession. A group of postie bike riders rode from Dubbo to the event – it took them three days. A Sydney rider came with three friends in 2022 and brought 19 friends with him in 2023.

54% of Rally attendees were from outside the Walcha LGA (within NSW), 12% from interstate, 1% from overseas and 33% were local attendees. Motorcyclists came from as far north as Rockhampton and as far south as Tasmania. The majority of attendees were from the 46 to 65-year-old age bracket. 43.85% of attendees spent a total of three nights in Walcha. The average amount spent in Walcha by individuals during their attendance on fuel, accommodation, food/drink, retail etc. was \$402.

For 25.78% of attendees it was their first-time visiting Walcha, with 88.98% saying they would visit Walcha at another time, other than for the Walcha Motorcycle Rally. They are interested in motorcycling routes, national parks/waterfalls, bushwalking/camping, history/heritage and food/dining experiences.

Community and Business De-brief 13 February 5.00 to 6.00pm

We have had excellent feedback from the attendees, however we would also like to hear from our community members. We have now held three Rallies and we want to hear the community’s thoughts about it. We are holding a community session on Tuesday 13 February from 5 – 6pm at Walcha Council Chambers.



NOWENDOC | NSW

Davidson Cameron & Co.
A NUTRIEN AG SOLUTIONS PARTNER

AUCTION



Land Size – 316 ha | 781 ac *



5 2

Tightly Held High Rainfall Grazing Country

- Water is a feature with 2 creeks and 6 dams, most of which are spring fed.
- A mixture of open grazing sections, well sheltered timbered grazing and established forest country. Natural pastures.
- Well fenced into 7 main paddocks and a laneway system for stock movement.
- A comfortable 5-bedroom home and a large machinery / storage shed. Steel cattle yards with crush and large holding yards.
- Plenty of scope to improve this property in a highly sought after area.

Pee Jay is offered for genuine sale & will be auctioned if not sold prior. A detailed information memorandum is available via request to the listing agent. Inspections are by appointment only.

AUCTION – 29th February 2024

Address: “PEE JAY”
9485 Thunderbolts Way, NOWENDOC NSW

Contact: Simon Burke 0427 634 341
sburke@dcco.com.au

Auction: 11am, Thursday 29th February at the
Darling Street Community Centre Tamworth

Davidson Cameron & Co.
A NUTRIEN AG SOLUTIONS PARTNER

Livestock & Rural Property Agents

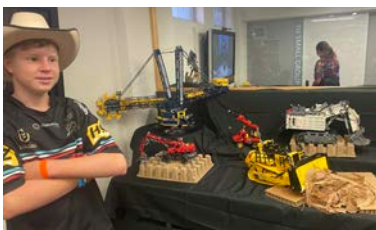
www.dcco.com.au

School's back, but holidays were fantastic

Walcha Council's school holiday program was boosted this summer, with some extra events thanks to the NSW Government. The Festival of Fun, with Greg Inglis, and Lego Day Out were two youth driven activities on the 'wish list' for our young people. These activities were in addition to the very popular Christmas Storytime, craft and dance activities, art workshops including felting and earring making, CNRL Science of Magic workshop, basketball clinic and pool party which attracted approximately 300 people. There was something for everyone.

The Festival of Fun, with Greg Inglis and the Goanna Academy, provided the youth of Walcha (and some die hard parents and community members) an opportunity to receive some coaching, skills and drills from ex-NRL player Greg Inglis. His program also involved a 'chat' at the Bowling Club with teens and their parents, with a focus on sharing his story and being upfront about mental health and wellbeing. The weather was no obstacle for the crowd, with over 100 locals participating on the day. The clinic was coordinated and talk at the club MC'd by Walcha Touch Football Association assets Ben and Sonia Ussher and supported by Youth of Walcha leaders Karen & Graham Barnes, Walcha Rugby League, Walcha Rugby Union and a small army of parent volunteers.

The Lego Day Out saw a bus load of local youth heading to Tamworth to enjoy the Tamworth Country Music Festival atmosphere and activities, and most importantly, the *Connecting with Bricks Inc.* display and workshop with Lego Master celebrities, Andrew and Damien. They visited Walcha last summer, for an epic two days of building workshops, which inspired the concept of *Connecting with Bricks* to be included in the country music festival, for all ages. With a group of almost 40, Walcha certainly made the most of the excursion and the opportunity to rub shoulders with Lego and Country Music royalty. Special thanks goes out to parent volunteers, who were instrumental in making this idea come to life.



Pitt Son's REAL ESTATE & LIVESTOCK

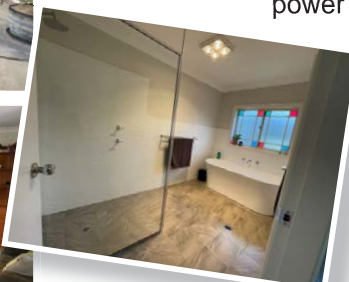
SAM PAYNE 0428 667 404 | ANDREW BLOMFIELD 0428 667 402
RON VINCENT 0427 775 821 | TROY DAVEY 0427 157 557

FOR LATEST
UPDATES



6777 2000 | www.pittsons.com.au

Stunning Brick Home on 2 acres



Exquisite 3 bedroom brick home located on the edge of town. Situated on 2 acres. You'll be captivated by the fresh paint and carpet.

- Kitchen is complete with a walk-in pantry and an abundance of cupboard space.
- The new three-way bathroom adds a touch of luxury to the home
- Outdoor entertaining area, perfect for hosting gatherings and enjoying the barbeque.
- In addition to the bedrooms, this house also features an office, ideal for those who work from home.
- Double garage attached to the main house.
- The property also boasts a large Colorbond double garage and workshop complete with power supply.

Don't miss out on the opportunity to own this beautiful brick home with ample space and new three way bathroom.

\$680,000

what's the goss

with AJ Cross



Staff at Cross Brothers Butchery must have thought Finlai Bird was having trouble with her memory when she ordered two Sirloin Steaks and a Scotch Fillet last week shortly after she had been in the shop just beforehand and placed the very same order! After purchasing her original three steaks Fin called down the street to pick up a few groceries and when she returned to her vehicle 'Ziggy' her dashing Dachshund was no where to be seen – which was very unusual. The reason being 'Ziggy' had found the meat and was giving it a proper going over, hence the re-order.

...

I had the pleasure of attending the residence of my former Walcha Roos teammate David Wright and his bride Jo last weekend to celebrate his 65th Birthday, which doubled as a Wright/Hoy/Gibson reunion. It was great to catch up with relatives of my much better half Linda and her sister Sandra Laurie.

...

A small piece of paradise would be the best way to describe the five acre block where David and Jo live at Richmond Vale just out of Kurri Kurri. It has a swimming pool close to the main house for people to cool off, which a number of us took up the offer when the mercury rose. Anyone who didn't enjoy themselves there last weekend and is looking for someone to blame probably should front up to the nearest mirror.

...

Last Sunday Walcha Senior Sportsperson of the year Margaret Davidson went within an ace of a hole-in-one on the ninth hole, when her tee shot missed the hole by an inch before coming to rest six inches past the cup. Club Captain, Willy Brennan, who witnessed the close call, conducted presentations later in the day. As no one had been clever enough to reach the beach on the home hole, Willy decided he would

give the prize to Margaret as a consolation for her effort on the ninth. When Margaret told Willy he couldn't do that, the immediate response in typical Willy style was 'I can do what I want as he handed over the N.T.P ball'.

...

Walcha/Uralla opening batsman Ed Blomfield scored a century last Saturday against Armidale City here at Peter Fenwicke Oval. This included a 134 run second wicket partnership with Walcha Road Policeman Josh Wearne in 25 overs. Not a bad effort considering City was dismissed for 131 chasing 209. Good on ya boys.

...

A mid order batting collapse didn't help the Walcha/Uralla case when they lost four wickets for just one run during their 14th and 15th overs. In the space of five deliveries Easts bowler, Sergio Northam, had Brian Mansfield caught for ten runs before rearranging the furniture of Paul Eddlington two balls later and then tilted the castle of Phil Frewen two deliveries after that to complete a three wicket maiden. When Blaine Moore went one run later, Walcha/Uralla had slumped from 4/46 to 8/47 and didn't recover. That was despite an unconquered 24 runs by Grant Youll batting at number 9, which set Easts a defendable total, although they did dismiss eight opposition batsmen along the way.

...

The Walcha Flippers are still holding their 'Return and Earn' program thanks to the support of the Walcha Council to help provide funds for some running costs of the club. You can drop off empty recyclable drink containers into the appropriately marked Wheelie bins inside the front gate.

...

Best of luck to Walcha Jockey Club President Jim Nivison and his committee when the annual two day carnival is held this weekend. Hopefully the weather will be kind and if you are having a punt hope you back a winner.



a journey of learning from K-12

WALCHA CENTRAL School NEWS

PHONE 6771 2777

154E NORTH STREET WALCHA NSW 2354 WWW.WALCHA-C.SCHOOLS.NSW.GOV.AU

SECONDARY

HANDSON LEARNING

Cafe and Construction programs will be offered to secondary students through our continuing Hands on Learning Program. Students will sell their wares to the school and wider community.

cafe

+

Construction

2024 Focus Programs


DA VINCI DECATHLON

The da Vinci Decathlon is an academic competition designed to challenge and stimulate the minds of school students. Students compete in teams of eight across 10 disciplines: engineering, mathematics, code breaking, art and poetry, science, English, ideation, creative producers, cartography and legacy.

The da Vinci Decathlon began in 2002 as an exciting offshoot of the very successful da Vinci Program for gifted and talented students at Knox. The Decathlon is designed to celebrate the academic gifts of Australian youth by providing a stimulating and challenging competition run in the spirit of an Olympic Decathlon.

PRIMARY & SECONDARY

garden clippings



The past few weeks have definitely been a challenge to keep our gardens in top condition. In saying this it is not all negative. Vegetable gardens have been bearing produce we haven't seen during the last three wet years. Zucchini, cucumbers, tomatoes, beans, sweet corn and lettuce have been exceptionally good this season – there should also be some good pumpkins and squash. Regular watering and mulching are essential during this heat, water early in the morning before it gets too hot. Water Tomatoes at the base to prevent fungal diseases on leaves. A pot of basil next to your tomatoes will deter any unwanted grubs. Regularly fertilise tomato plants to ensure stem strength and good yields. Yellowing leaves indicate lack of nutrients, remove these leaves and feed the plant with a seaweed/fish emulsion. This helps when plants are heat stressed. A good layer of lucerne around the base will provide nitrogen and prevent moisture loss.

Fruit trees that have finished can now have a mini prune to bring them back into shape. Remove any rotting fruit on the ground as they may have fruit fly larvae in them. Place in a black plastic bag and leave in the sun for a couple of weeks to destroy the larvae then put the bag in the rubbish bin. Last Friday, 38 club members visited gardens on our meeting day. Brigitte Hone, our first host, grows beautiful dahlias, enters them at local shows and sells her blooms to a local florist. Brigitte gave a talk on how to grow and maintain these blooms, which come in many varieties from pom poms to dinner plate sized blooms. Our second garden was Ian and Dar Brookes' at Kelly's Plains. This garden contained a large collection of old fashioned roses, ornamental grasses, various hedges, ceanothus, abelias, and many herbaceous borders. Tiff Tuff Bermuda couch has been planted in various parts of the garden to provide an evergreen soft lawn. Like to gain further knowledge of gardening in our area? Our members have an amazing interest and wealth of knowledge to share with anyone who is interested.

The Walcha Show is on Friday 9 and Saturday 10 March. Please read the schedule for entry details and contacts.



Tennis

The 2024 Walcha Seniors Tournament

To be held over three days on the 1, 2 and 3 March. People will come from far and wide to compete. More information and entry forms are available to download on the Walcha Tennis Association Facebook page or pick up your copy from the Walcha Telecottage.

Volunteers are needed to help in the canteen over the three days and goodies to sell in the canteen would be gratefully received.

Contact Roxana Mathews 0455 501 482 or Trevor Gibson 0459 799 119 if you can help.

The 2024 Summer Night Comp starts this week. Good luck to all players. The next Club meeting will be held on Monday 12 February at 6.30pm. See you all at the net soon.

Bowls

Dads Army: After a couple of weeks where the weather was against us we eventually got to play on Thursday afternoon.

A game of triples and one pairs was played with both winners having good wins.

In the triples John Watts, Peter Hayes and Eric O'Keefe defeated Noel Goodwin and Matt Andrew's who played twice 20-7 and in the pairs Geoff Salt and Brian Goodwin were 20-12 winners over John McCormack and Simon Porter.

Geoff and Brian won the chooks while George Lawrence and John Watts won the raffles.

TWILIGHT: After four rounds, all 14 teams are continuing to enjoy their time on the rinks. There will be no games on Friday. (Race Day).

Flippers

The Walcha Flippers Swimming Club resumed from their Christmas/New Year school holiday break last week where only around half the club members attended.

Seven swimmers gained full points – Logan Dyason, Albert Green, Airlee Tate, Ben Lockyer, Jess Patterson-Kane, Penelope Taylor and Isabella Mooney.

Despite the lack of members attending the swim meet 103 P.B's were registered.

Movers and shakers were Isobel Mulligan, Logan Dyason and Penny Wauch Tadpoles to Frogs, Will Lisle – Frogs to Turtles, Grace Smith – Turtles to Crocodiles and Jasmine Lynch who progressed from Dolphins into the premier group Sharks. Good on ya guys keep up the good work.

At the Nineteenth

A 4BBB Medley was on offer last Sunday for trophies donated by John and Janie McLaren where Miles Archdale and Will Nicholls accumulated 49 stableford points to run out the winners.

Next best was club captain Willy Brennan and club life member Margaret Davidson after they racked up 45 points while the remaining sweepstake prizes went to Mal Ballard and Pauline Carter, John McCormack and Vicki Heffernan, Owen and Jule Presnell all on 43 pts.

Sharpest shooters at the pins were Drew Bird (3) and Margaret Davidson (9). Check out 'What's the Goss' for more details on Margaret's N.T.P.

Last Saturday Pete Whellan carded a very good score of 23 stableford points to win the weekly 9 hole competition

comfortably clear of runner up Pauline Carter on 17 points after she won a three way cutback with her sister Sue Partridge and Max Holstien also on 17 pts. N.T.P on 3 went to Max Holstien - not bad for a 91 year old.

Walcha didn't kick off their New England Veteran Pennants campaign at Armidale as well as what they would have liked when they finished fourth, of the five clubs in the opening round of the competition. Armidale won on 264 followed by Guyra 239, Glen Innes 229, Walcha 218 and Uralla 208.

This Sunday is a two person ambrose where Brian Smith Transport is in charge of supplying the prizes.

Cricket

Walcha/Uralla v City 2nd Grade

Walcha/Uralla	
E BLOMFIELD c&b M Scully	110
B HALL r.o (Bryant)	0
J WEARNE b DTillbrook	40
D BOYD c D Tillbrook b S Butler	9
S RAFFERTY c&b M Sully	8
J GRILLS c Gilbey b S Butler	16
W FLETCHER b M Scully	5
C BOYD c Hanson b M Scully	2
L FLETCHER lbw M Scully	0
B HOY n.o.	7
M HARPER b M Scully	0
Total 209. Extras 12. Bowling (overs/maidens/wkts/runs)	
P Gilbey 4-1-0-14, D Tillbrook 7-0-1-40, R Watson 3-0-0-12, M Scully 8-2-0-6-42, S Butler 9-0-2-50, A Skinner 5-1-0-23, P Lye 5-0-0-26.	

City	
A HANSON lbw Harper	5
P LYE c B Hoy b L Fletcher	28
J RYAN b B Hall	9
A SKINNER lbw b C Boyd	18
M BRYANT r.o (D Boyd)	26
P GILBEY c S Rafferty b J Grills	10
R WATSON c&b M Haper	7
L STONESTREET b J Grills	15
M SCULLY lbw J Grills	2
S BUTLER n.o.	1
D TILLBROOK c B Hoy b M Harper	0
Total 131. Extras 10. Bowling (overs/maidens/wkts/runs)	
M Harper 6-2-1-3-11, W Fletcher 4-0-0-14, L Fletcher 5-0-1-24, B Hall 7-0-1-37, J Grills 8-2-3-29, C Boyd 3-0-1-14.	

Walcha/Uralla v Easts Gold 3rd Grade

Walcha/Uralla	
B JEX c L Northam b M Northam	9
N ENDACOTT c B Mullen b A Paul	2
N SWAN b A Northam	1
B MOORE c M Northam b T Craig	10
C WATTS b T Craig	8
B MANSFIELD c B Mullen b S Northam	10
P EDDLINGTON b S Northam	0
P FREWEN b S Northam	0
G YOULL n.o.	24
H WILLIAMS b M Northam	2
C MOONEY c K Simpson b D Northern	6
Total 96. Extras 24. Bowling (overs/maidens/wkts/runs)	
A Paul 6-1-1-11, M Northam 10-1-3-25, S Northam 8-3-3-22, T Craig 4-0-3-18, D Northam 6-2-0-1-19.	
East Gold	
A PAUL lbw B Moore	10
T CRAIG c C Watts b P Frewen	17
M NORTHAM c B Mansfield b N Swan	41
B MULLEN b C Watts	1
T HISLOP b C Watts	0
L NORTHAM s B Moore b G Youll	12
PJ FERRIS c&b N Swan	0
K SIMPSON b C Watts	4
S NORTHAM n.o.	6
D NORTHAM n.o.	1

Total 97. Extras 8. Bowling (overs/maidens/wkts/runs) C Mooney 3-0-0-12, P Frewen 6-1-1-16, B Moore 4-0-1-16, C Watts 7-2-3-16, G Youll 4-0-1-24, N Swan 4-1-2-10.

Walcha/Uralla Cricket Club won one and lost one when they played Round 9 of the Armidale and District competition last Saturday.

Here at Peter Fenwicke Oval 2nd grade defeated Armidale City by 78 runs after setting the visitors a total of 209 runs thanks mainly to opener Ed Blomfield who posted 110 runs off 32 overs which included a dozen 4's and one over the fence.

Blomfield put on a 134 run second wicket partnership with Josh Wearne who contributed 40 runs while Jay Grills was the only other homeside batsman to reach double figures 16.

In reply City batted for 34 overs to make 131 runs where opener Matt Harper snared 3/11 off 6.2 overs, Grills sent down 8 overs to collect 3/29 while Lachie Fletcher, Ben Hall and Cooper Boyd all picked up a scalp each.

Up at the Uralla sporting complex 3rd Grade were defeated by Easts Gold who had two wickets up their sleeve when they passed the modest home team total of 96.

Sent into bat the homeside were in more trouble than 'Speed Gordon' at 8/47 in their 17th over after having just lost four wickets while scoring one run.

A rear guard effort by Grant Youll who scored an unbeaten 24 runs batting at number 9 bumped the total up to 96 which the visitors passed in their 28th over.

Best of the Walcha/Uralla trundlers was Chris Watts 3/16, Nathan Swan took 2/10 whereas Phil Frewen, Blaine Moore and Youll all grabbed a wicket each.

Walcha Gun Club

Walcha Gun Club will host their annual two day shoot this Saturday and Sunday at the Gun Club on Bergen Road. Starting at 8:30am both days, shooting 250 targets with a shoot off on Sunday to decide the winners.

Canteen running throughout the carnival, with facilities for spectators. All welcome and we thank our sponsors Professionals Armidale, Weelayem Bricks, Drew's Seafood, Jack's Creek Beef and Hone Plumbing.

telecottage
WALCHA

Design, print and secretarial services

- Photocopying
- Laminating
- Business Cards
- Stationery
- Invoice/receipt books
- Labels
- Sale Catalogues
- Brochures
- Resumes
- Cards
- Stamps
- and more.

Phone 6777 1111

wtc@walchateleccottage.com.au



KNITTING AND CROCHET

Do you have any unfinished knitting projects stashed away that need completing ... or have you thought about crocheting a scarf or beanie? With the Show just around the corner, it would be great to see your knitting and crocheting skills on display. There is a class for everyone – 49 of them to be exact – so get those needles and hooks clicking!

Entries to the pavilion by 10:30am Thursday 7 March. For information contact Jenny Hill, Chief Steward Needlework on 0497 910 637.

NEEDLEWORK

Yikes! It's only five weeks until the Show. This year our feature section is bigger than usual, with a total of five. All are in cross stitch, either on linen or aida cloth. Those of you putting your cross stitch in, it must be completed and framed or mounted, all sizes accepted. Needlework covers a huge range of work, for eg, crochet, cushions, quilts, patchwork, embroidery and dress making. We have two Junior Sections for young enthusiasts – U18 and U12 Years.

If you are unsure of what class your work should go in, don't worry. Bring your work in,

clean and finished and we will class it for you. If you have any queries please ring Cathy Lisle on 0427 681 120, or Mary Brearley on 6777 2781. We are both very happy to answer any of your questions.

COOKING

The Walcha Show schedules are out now so you can start practicing for the cooking section. Cooking will need to be in by Thursday 7 March no later than 10.30am please, and no late entries will be accepted.

We have altered the cooking section this year, so please read the schedule carefully before baking ... and don't forget to bring in your completed entry form with your entries.

This year we have a special addition for the Feature Cake in the Open section which is explained in the schedule. Use the recipe specified and don't be tempted to use your very own 'favourite one'.

Handy hints:

1. Use the recipe specified for Feature Cakes in each section
2. If it's not in the schedule, don't bring it in.
3. No cut cake will be accepted.
4. Have a deeper container than your cake so your icing does not stick to the lid.
5. Be patient so you can take your containers home, we do not have storage space.

The Pavilion will close at 5.00pm Saturday for unpacking and will re-open at 5.30pm for collection, not before. This ½ hour is very hectic for the Stewardesses, so please:

- make every effort to pick up your cooking by 6pm Saturday, or advise when entering if you do not want your cooking back.
- encourage your children to participate
- Cooking will be marked off as collected.
- Need advice? We are happy to help.

Vic McIvor, Chief Stewardess 0427 772 950

WOODWORKING

If you have some wood that you can cut, turn or carve, why not bring it along to the show and enter it in the Woodwork Section. It doesn't matter how young you are, old you are, and The Men's Shed members are also encouraged to enter. There'll be a section that will cover anything you make, including one for for restored furniture.

Due to interest in metal work there is also a section for a 'Small Article Made out of Metal. It has to be small, eg something like a tool ... please no gates!!

Entries will be accepted up to 10.30am Thursday 7 March at the main pavilion. Please note not the 8 March as listed in the schedule.

For further information please contact Charlie Koebel on 0428 777 534.

advocateclassifieds



Public Notice

Road Closure for Bridge Works - Niangala Road -

TUESDAY 13 & 20 Feb 2024

Local residents are advised that the below temporary road closure will be in place on Niangala Road this month:

- **Road:** Niangala Road
- **Closed Section:** Crossing Niangala Road
- Scrubby Gully Road to Crossing Niangala Road/Surveyor Creek Road.
- **Closed length:** 8.5km
- **Dates:** 13th and 20th of February 2024 – closure is over 2 separate days
- **Duration:** 9:00am until 2:30pm
- **Reason for closure:** Craning operations being undertaken during this closure as part of the new bridge construction at Boxley over the Pipeclay Gully, parallel to the McDonald River.

Phil Hood, General Manager
Walcha Council, PO Box 2, Walcha NSW



Walcha Council

Part Day Public Holiday

A part day public holiday is to be observed in the Walcha Council Local Government Area commencing at 12 noon and finishing at 6:00pm on Friday, 09 February 2024 for the Walcha Jockey Club's Race Meeting.

The Public Holidays Amendment Order 2023 under the Public Holidays Act 2010 was signed by the Minister for Industrial Relations on Tuesday, 19 December 2023.

Phil Hood, General Manager
Walcha Council, PO Box 2, Walcha NSW



Apsley Riverview Update

During the Ordinary Council meeting held Wednesday 31 January 2024, Council resolved to enter into negotiations with Presbyterian Aged Care for Walcha Council to become the new operator of Riverview Aged Care.

Presbyterian Aged Care (PAC) notified their Apsley Riverview residents and staff of this decision on 1 February 2024.

Council wishes to thank all those members of the community who have contributed their feedback and support to date, which has been overwhelmingly in favour of Council taking on operation of the facility.

Phil Hood, General Manager
Walcha Council, PO Box 2, Walcha NSW



Public Notice *cont*

Woolbrook Church Service 2.00pm, this Sunday. For info Graham Barnes 6777 2539.

DR GENEVIEVE FREER

Phone 6777 2068 0429 668 583

For Sale

Layer pullets, all breeds, 20 wks. Delivered Friday 16.2.24. Phone Jim 0428 194 105.

Wanted

Quality Top Soil

Please call 6777 6445 after hours.

Lost

Diamond from an engagement ring. If found please call 6777 2066. Reward offered.

Beverly Betts Rose Garden Opening Ceremony

The official Opening Ceremony of the Beverly Betts Rose Garden, by Adam Marshall MP, will be held at the rose garden on Tuesday 13 February 2024 at 9:30am.

All welcome

Phil Hood, General Manager
Walcha Council, PO Box 2, Walcha NSW



THE APSLEY Advocate Deadlines

Advertising & Sport Mondays 4.30pm

trade and professions



New England Accounting & Taxation Services Pty Ltd

Specialising in:

- Accounting, Business & Taxation Services
- BAS & IAS Preparation & Lodgement
- Bookkeeping & Secretarial Services



New England Accounting & Taxation Services Pty Ltd is a CPA Practice

Brendan Blake CPA

10W Hamilton St Walcha

Tel.: 02 6778 0054

Fax: 02 6778 0035

Email: ats@ozemail.com.au

Nick Moore PLUMBING & EXCAVATION SERVICES

WALCHA & SURROUNDING AREAS



Highly qualified and experienced plumber
All aspects of Plumbing and Gas Fitting
Wood heater installation
Roofing and Guttering
Gold License No 59555C

Nick 0418 691 306

nickmoore203@yahoo.com.au

Katy 0422 034 660



M L MASSAGE THERAPY

Remedial and Sport Massage

MADDIE LANCE

TUES TO FRI 9AM - 6:30PM

0432 635 994

MOBILE
TREATMENTS
AVAILABLE

Tree lopping
Tree removal
Truck & chipper
Bobcat
Post hole digger
Trencher
Woolshed cleaning
Stockyard cleaning

Scott Kermode
0427 100 889

TREETOP
services

treetopservices@bigpond.com



CURTIS

MOWERS & SMALL ENGINES

- Mowers • Ride-ons
- Pumps • Chainsaws
- Whipper snippers
- Chain sharpening
- Bar dressing

SELLING New 30 & 40 Tonne Petrol Hydraulic
WOOD SPLITTERS

• Chainsaw chain • Pumps & Generators •

JAMES – 0488 020 762 (7 Days)



CPC SPRAYING SERVICES

- Boom and Reel Spraying
- GPS Fitted 4WD Small Truck

Phone Peter 0404 471 105

CHIROPRACTOR

K Samantha Goor

B.Sc. Anatomy (NSW) M Chiroprac (Macq)

Tuesday & Friday from 9.00am

6777 1340

ENGINEERING

John Wall

- Stock floats • Feeders • Sheep & cattle yards • Steel framed sheds & mobile welding

6778 0588 • 0428 778 087

STACES FAST FREIGHT

Delivering
Tamworth – Walcha
0429 608 409



Andrew: 0427 549 748

Toni: 0421 972 354

**MOBILE-FIX
AUTO+AIR**
Mobile Repairer & Airconditioning Specialist
Licensed Vehicle Repairer
Lic.No.46696 RTA Lic No. AU22616
PATRICK STACE – WALCHA
Mob. 0428 780 077 Ph. 6778 0595

STORAGE CENTRE WALCHA

20' Containers available for rent \$35 pw + GST
Secure Undercover parking for cars,
vans etc \$15 pw +GST

ANGUS 0427 787 332

church notices



ANGLICAN

Holy Communion Service 7.30am

Family Service 10.00am

Nowendoc Service 2.00pm

Phone 6777 2543 or email:

walchaanglican@gmail.com

PRESBYTERIAN

Walcha, every Sunday 9.30am

Combined church Youth Group in the
Hall, every Saturday 5pm - 7pm.

All welcome. Phone 6777 2539.

CATHOLIC

Sunday Mass 10.00am

DISCLAIMER LETTERS TO THE EDITOR are submitted on the condition that The Walcha Telecottage as the publisher of The Apsley Advocate may edit and has the right to, and license third parties to reproduce in electronic form and communicate these letters. They are published at the discretion of the Editor and Board. The Apsley Advocate is printed by The Walcha Telecottage, PO Box 116 Walcha NSW 2354. Phone 6777 1111 Fax 6777 1112. The Walcha Technology Co Operative Limited, the Editor and Staff of this Newspaper have published any article here-in in good faith and bear no responsibility in respect to the accuracy of the information contained in such article. Any person or persons publishing material in this Newspaper do so in the knowledge that they shall personally accept any responsibility for the accuracy and other correctness of such articles and also accept full responsibility for the legal consequences if it be found that the article contains any inaccuracies in the contents of any such articles. **DEADLINE MONDAY 4.30PM**
Editor: Anthea Macpherson. Advertising and Sport: Rosalie Gibson, Megan Scrivener, Emily Scrivener and Joscisca Matapakia.

Marchant

BROS. PTY. LTD. Est. 2000

WATER CARTING

DELIVERING
7 DAYS
A WEEK

WALCHA COUNCIL
CERTIFIED DOMESTIC
WATER
CARTER
10,000 litre tank



A FULL RANGE OF AFFORDABLE TRANSPORT & EARTHMOVING
Dam construction/maintenance, stick raking, road building,
site prep, pipe laying and all timber work.

Check out our website for the full range of machinery,
attachments and services available

FIREWOOD AVAILABLE

Earthmoving and Heavy Haulage Transport
Jason 0427 490 487

02 6777 2024 marchantbros@bigpond.com
www.marchantbros.com.au

BOWLING & RECREATION CLUB

FRIDAY RACE NIGHT – FROM 9PM

'Rock N' Mash'



AWARD
WINNING
GUITARIST
'MASHA
MERRICK'

Performing
everyone's
favourites from
Rock to Country,
Reggae to Blues

Friday 9

2.00pm – Close

2.00pm Bingo

6.00pm Bistro

- Homemade rissoles
- Homemade chicken
Kievs
- Grilled prawn salad
- Normal menu
available, takeaway
and delicious
desserts

6.00pm Free Bingo

6.00pm Tickets for
raffles

MEAT & VEG
TRAYS

8.00pm Raffles &
Members Draw

RACES CALCUTTA

Thursday 8 February
7.30pm

Social Membership \$15
Full Membership \$105
PHONE 6777 2077

Thursday 8 12.00pm – Close

Ladies bowls from 9am

Saturday 10 11.00am – Close

6.00pm Bistro

Sunday 11 11.00am – Close

12.00pm Bistro. Children U/10 kids
meal free with an adult order.

12.00pm MEAT & VEG TRAYS

12-2pm \$5 schooners

FOR ALL YOUR EARTHWORKS
TRANSPORT AND ELECTRICAL NEEDS

ALL ASPECTS OF RURAL, COMMERCIAL & CIVIL WORKS



- Freight & Transport • Machinery Float • Stick Raking
- Road construction and maintenance • Trenching
- General Earthworks • Drilling • Mulching
- Dam maintenance and construction
- Erosion Control • Site Preparation • Electrical Works

Ian Notley 04188 29188 • Mark Notley 0422 637 686
www.eteservices.com.au



LINMAC ENGINEERING

IF YOU NEED IT – We make it!

CUSTOM TRAYS AND TIPPERS



- Customer consultations
to make sure we build
to YOUR individual
specifications
- Sandblasted and
powdercoated
- Toolboxes, timber floors,
tipper trays, water tanks ...
whatever you need!

AUTHORISED HUSQVARNA DEALER



Check out our new facebook page:
Linmac Engineering Walcha

211N Pakington Street WALCHA
Phone 6777 2822 Email enquiries@linmacengineering.com.au