

THE APSLEY Advocate

CIRCULATION 1920 – P 02 6777 1111 F 02 6777 1112 wtc@walchatelecottage.com.au walchatelecottage.com.au

24 January 2024

Australia Day Breakfast

Airlie
Merinos & Poll Merinos

RAM SALE

Thursday 1st February



Sale at Walcha Showgrounds

50 RAMS

Including 25 Polls
White, Bright, Heavy cutting,
Non mulesed fine wools

Walcha Showground
• Inspection 11.00am • Sale 1.00pm

JOHN CROAKE
0428 977 589
BRETT COOPER
0407 136 129

GRAHAM ANDREWS
0400 342 227
TODD CLARKE
0428 248 427

Murray Power: 0429 918 631
www.airliemerino.com.au

On Australia Day we celebrate all the things we love about Australia: land, sense of fair go, lifestyle, democracy, the freedoms we enjoy but particularly our people.

This will be the focus of Walcha's Australia Day Breakfast in the Park this Friday with the presentation of awards to those in our community who have contributed through their voluntary work and sporting pursuits being recognised in our Citizenship Awards.

While enjoying your breakfast you will also have the opportunity to listen to music by Howard Greenwood and Barbara Dunn, as well as poetry by Gordon Edmonds. The children haven't been forgotten with Sand Art activities throughout the morning. Walcha Historical Society will also have a display in the Park for you to wander through.

This year we are fortunate to have the inspirational Nicholas Gleeson as our Ambassador. Nick will give our Australia Day address and it is one not to miss as over the years he has built up an enviable reputation for public speaking. Nick has that rare gift of being able to convey a serious message – that of overcoming the challenges of living with blindness – with warmth, humour and honesty.

He was born in the working-class Melbourne suburb of Broadmeadows in the 1960s, back when a cricket bat was a piece of wood borrowed from a fence.

Nick's life changed forever at age seven when an electronic swinging supermarket door hit him on the side of his head, causing a retinal detachment.



McHattan Park 26 January 2024

- 7:30am – Breakfast in the Park \$8 per head or \$25 per family CASH ONLY
- 9:00am – Ceremony begins with raising of the Australian flag, Bush Poet Gordon Edmonds and address by our Australia Day Ambassador, Nicholas Gleeson followed by presentation of Citizenship Awards. No Lamingtons will be available for sale this year due to retirement.
- Wet weather venue: Walcha MPC

He attended a boarding school for children who were blind and was one of the first of his peers to finish Year 12. Nick went on to complete a Bachelor of Arts at Melbourne University – no mean feat considering the difficulty a person who is blind faced in accessing information back then.

Despite his academic achievements, Nick's great passion has always been sport and adventure. He has represented Australia in athletics on three occasions, racing in America, England and Hong Kong. He also played blind cricket (much like the traditional game, but using an audible ball) for almost 20 seasons, representing Victoria, New South Wales and Australia.

Much of Nick's success as a speaker is down to his ability to bring his sporting and travel adventures to life. These include three times crossing the finish line in the New York City Marathon, carrying the Sydney Olympic Torch, racing up the 1,576 steps of the Empire State Building and completing the gruelling 90km from Durban to Pietermaritzburg in the Comrades ultra-Marathon.

Although these situations are extraordinary to most of us, Nick's down-to-earth nature and compelling descriptions of what he smelt, heard and felt at the time enable the listener to place themselves in his well-travelled shoes. Nick will be travelling to Walcha with his Guide Dog Jarvis.

LORELMO

Poll Merinos

RAM SALE

80 POLL RAMS 5th Feb

Inspection 10:30am

Auction 1pm

On property 'TOPDALE' Walcha NSW

DUAL PURPOSE
NON - MULESED
BOLD CRIMP
LONG STAPLE
FERTILE

www.lorelmo.com.au



Eddy Cordingley: 0429 486 380
Tom Henry, Elders: 0409 659 877
John Newsome, Elders: 0428 669 498
Bill Walker: 0428 973 804



ORDER YOUR SEED NOW

- Ryegrass
 - Permanent pasture mixes
- Custom mixing available on site

WVS
WALCHA VETERINARY SUPPLIES

6777 2588



OK EARTHMOVING

Specialising in road construction & maintenance

• Stickraking • Dam building • Erosion works



Bulldozers • Excavator • Tip-truck • Vibrating Roller

PH 6777 7430 FAX 6777 7448

PETER O'KEEFE: 0429 944 821

old woombi
POLL DORSET STUD



Chain-o-Ponds
BORDER LEICESTERS

RAM SALE TUES 6 FEBRUARY



1.00PM – 'ASHFIELD'
OXLEY HWY, WALCHA

**40 BORDER
LEICESTER RAMS**

71 POLL DORSET RAMS



Sam and Kate Lisle

02 6777 2605 or 0427 773 944

Elders Walcha.....02 6774 2600

Tom Henry.....0409 659 877

Allan Laurie.....0455 821 394

Lincoln McKinlay...0400 552 458

James Sharpe.....0409 272 490

READ OUR 2024
SALE CATALOGUE



around the traps



By SIMON NEWTON

The rain last week was ideal for many but once again it was extremely patchy around the district and tablelands. Falls of between 50-60mm fell in the east while most of the district recorded between 20-35mm. Parts of western NSW recorded more than 100mm which will get the grass growing. I was west of Barraba last week and they are having an exceptional season with feed around their knees, it's a remarkable turn around when only back in November they were just dirt. The second tropical cyclone is forming off the coast of QLD which is once again set to bring heavy rain and flash flooding to large parts of the QLD coast. The cyclone looks to be entering QLD a far way further south than cyclone Jasper which may also drive some decent moisture south to us.

The conflict continues to rise in the Red Sea as an Australian live export shipment of sheep and cattle has been turned around and sent back to Australia due to safety concerns. The Red Sea is a major shipping channel from Australia to Europe and the Middle East and the vessels travelling this path have been under attack from the Yemen-based, Iran backed Houthi rebel group. These attacks started back in November with dozens of attacks on commercial ships in the Red Sea which has forced the exit of shipping companies from that region. The continual attacks threaten to disrupt supply chains and increase consumer prices on everything. Food, fuel and our ability to market agricultural goods to the world will be under pressure affecting our farm gate prices. These continual attacks have forced United States and the United Kingdom militaries to step in with force.

Not only are we having issues with the freight channels in the Red Sea, but it seems an industry dispute on our Australian ports is escalating. The dispute is between the Maritime Union of Australia and Stevedore DP World which is affecting all the East coast ports in Australia where DP World operates. DP World is one of the largest container freight service providers for incoming and outgoing trade movement and the renewal of DP World's agreement with waterside workers has stalled. Just like the rest of Australia they are asking for a large pay rise and now we are confronted with work stoppages and a 24-hr ban on loading and unloading trucks and trains at ports this Friday. These stoppages are costing our nation \$80 million a week and the longer this dispute goes on the worse our ability to deliver product to port and get it on these vessels to the world. Some ships have already cancelled from their unloading and loading out of Brisbane due to strikes. The government needs to step in and help sort this mess out as it affects everyone's back pocket. We need to get our produce to the world, quickly and efficiently, otherwise they will look elsewhere as we will be known to be unreliable.

The beef market continues its gradual rise with grass continuing to grow in the paddock and a huge reduction of direct consignment cattle being held back from feedlots and processors, as producers now have the ability to fatten. Tamworth yarded 2650 cattle which saw most classes of cattle sell to dearer trends. Light weight restocking steers sold to a top of 428c/kg while the heifer portion made to 366c/kg. Feeder weight cattle were in demand with increases of 10-20c/kg and topping at 358c/kg for steers and 336c/kg for heifers. Well finished kill cattle topped at 308c/kg for steers and 300c/kg for heifers while the cow market was 20c/kg dearer topping at 267c/kg. Tamworth yarded 2400 sheep and 2000 lambs which saw lambs sell to cheaper and mutton sold to a dearer trend. Trade weight lambs sold from \$110-155 depending on condition and weight while the heavy export lambs topped at \$205. Heavy ewes topped at \$125, dorpers to \$100 and merinos topped at \$73.

The local rodeo took centre stage on Saturday night, and it was great to see a great turnout for the annual event. This year event was a little different in that we saw plenty of locals take part in the rodeo, competing in events suitable for local competitors.

The local Rams sales are in full swing this week so be sure not to miss your chosen seedstock producers' sale.

Emily to represent Walcha at the Young Woman Zone Final

From Pip Monie, Walcha Show Society

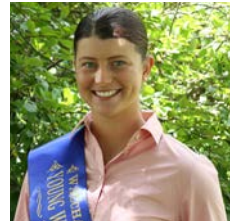
Not only does Emily Scrivener work at the Walcha Telecottage, helping with secretarial duties and getting the Advocate to print each week, she is also the Walcha Show Society's Young Woman representative at the 2024 Zone Four Finals.

Emily is an ambassador for the Walcha community, the agricultural industry and for rural youth with her involvement in equestrian, woodchopping and beef cattle shows, along with her voluntary work in community events such as the Walcha Show.

Emily believes the The Land Sydney Royal Ag Shows NSW Young Woman Competition is an opportunity to share both experiences and issues faced on the land with other like-minded, inspiring young women and that it provides a platform to develop both personally and professionally.

On Saturday 10 February Emily will travel to Tamworth to represent Walcha at the Zone 4 Final. From there, two winners will be chosen to go to the Sydney Royal Agricultural Show in March to compete for the title of *The Land Sydney Royal AgShows NSW Young Woman of the Year*.

We are very proud of your achievements Emily and wish you lots of luck at Zone.



thumbs



- 👉 To the ladies at Community Transport for your excellent and compassionate service.
- 👉 To Danny Hoy for giving me a lift from Walcha Road Station when I had no phone reception and no way into town. Greatly appreciated.
- 👉 To Daniel Boyd for a fantastic job of preparing the cricket pitch at the Ovals.
- 👉 To Harry King and the Golden Gate committee for running a great three day campdraft and rodeo event.
- 👉 To the staff at the Walcha Memorial Baths for always having smiles on their faces.
- 👉 To all the people who open the windows in a climate controlled gym and don't close them on hot days.

Contributions will be received in person, by phone or email and must be accompanied by your name and contact details. They will be printed at the discretion of the editor.

Nutrien Boulton's

Stock and Property Watch

www.nutrienharcourts.com.au

Home for the extended family



- Five large bedrooms with built-ins, new paint and carpet
- Main bedroom with new ensuite
- Three comfortable living areas two with wood heating
- Large rumpus room
- Two bathrooms
- Outside is also taken care of with double garage and carport
- All this is set on approx 1.6 acres of land in the middle of town

\$590,000

For all enquiries please call Peta Carter: 0407 350 781

Country retreat – a rare find



Beautifully presented brick home, with Colorbond roof, set amongst landscaped gardens on approx 2 acres on the edge of town.

- Three large bedrooms with built-in robes
- Open plan with wood heating
- New painting and carpets throughout the home
- Newly renovated three-way bathroom, consists of a large easy-clean shower and free standing bath
- Family room that leads to the outdoor entertaining area and your very own veggie garden
- Large Colorbond double garage and workshop with power

\$680,000

Nutrien Boulton's Walcha ■ 3n Derby Street Walcha ■ 6777 2044



SALWAY
MATERNAL COMPOSITES



OPEN DAY
18 January • Salway
10am – 12pm

RAM SALE

25 JANUARY 2024

Online only at  **AuctionsPlus**

Contact Salway:
Rob & Anna Mulligan
02 6777 3914 or
0427 773 914

Nutrien Boulton's Walcha:
Miles Archdale 0428 660 326
Matt Larkings 0427 002 427
Simon Newton 0467 660 320




www.salway.com.au




New England Merino Field Day


Uralla Showground
Friday 12th Jan 2024
9am–4pm

On-property Ram Sale - 36 rams

1pm Thursday 8th Feb 2024
Inspections from 10.30am

Todd Whillock 0427 740 283
clovernook@antmail.com.au
1049 Campfire Rd Woolbrook NSW




120 PROFIT DRIVING RAMS

35TH YALGOO RAM SALE

11:30am SATURDAY
27 JANUARY 2024



- ✓ Number 1 ranking MP+ ram in the industry – 220557
- ✓ Top 2 ranking FP+ rams in the industry – 220557 & 220430
- ✓ 3 of the top 4 FP+ rams in the industry
- ✓ Sale rams average -Top 4% FP+ index
- ✓ Top 9% MP+ index
- ✓ Top 20% DP+ index
- ✓ Top 5% EBIT/DSE (2021 BM)
- ✓ Industry leading client benchmarking and wether trial data
- ✓ Selection is driven by profit not fads and validated through benchmarking, sire evaluations and wether trials
- ✓ Maximum accuracy: Entire flock genomic tested

Catalogues available at Sheep Genetics,
www.yalgoogenetics.com.au, Auctionsplus

OR contact
Jock Nivison 0497 762 977
jock@yalgoogenetics.com.au

Fabric and old curtains come to life again

The *Nowendoc Hay Bale Twine Collective* ladies have very generously made Clothing Protectors and donated them to the residents of Apsley Riverview.

There are about ten ladies who meet in Nowendoc on Tuesdays for exercises and then they either plait baling twine to make dog leads or sew the clothing protectors using donated fabrics which may otherwise ended up in landfill.

Local Nowendoc resident Sue Lyon embellished some with Christmas motifs or beautiful lace to add interest to the garments.

The staff and residents are very pleased with the generous donation from the group and thank the ladies very much.

The ladies will gratefully accept any donations of unwanted fabrics, even old curtains can be reused.



Rugby Camp fun

Ten budding young Walcha rugby players enjoyed four days of training last week, learning from rugby professionals at the National Rugby Camp in Armidale. Walcha Ram Lambs fielded players in three age divisions:

Under 14'sHamish Clark

Under 12'sAngus Fletcher, Digby Clark and Flynn O'Connell

Under 8'sHarry Fletcher, Levi Williams, Max Martin, Archer Clark, Harry & Archie King

The camp provides a unique opportunity to 'live in' (stay on site at TAS) and get a full holistic Rugby experience with focus on the on field and off field development. NSW RUGBY Development and Coaching staff provided all the on field curriculum and coaching with off field development around nutrition, flexibility and strength.

The boys learnt ball familiarisation, agility and evasion, tackling and ruck, catch and pass skills and finished off the camp with a morning of rugby games.

The children all had an amazing couple of days making new friends and learning new skills. "The Junior club would like to thank the Senior Rugby Club for their financial assistance in helping get the juniors to the National Rugby Camp for 2024. Hopefully, the children learnt some valuable skills to help them on their road to becoming a Walcha Ram," Trina Fletcher commented.

The 12 & 14 year olds went into camp on Sunday 14th and stayed at TAS over three nights and four days.



Under 8's pictured below with NSW Waratah Ned Hannigan



PLC
PRESBYTERIAN
LADIES' COLLEGE
ARMIDALE
1887

Equip her for a life of significance

2025 Enrolments now open

plcarmidale.nsw.edu.au

02 6770 1700



Vets Cricket hits town

By A.J. Cross

The weather gods smiled down when Walcha hosted a four team over 60's Veteran Cricket competition on Tuesday and Wednesday of last week.

Out at John Oxley Sportsground on the first day New England defeated Port Jackson in a thriller that went right down to the wire, passing their assignment of 190 runs in the final over with just one wicket up their sleeve.

During that game former Colts player Craig Stoddart hit the only half century of the tournament playing for New England scoring 56 before he was run out, with victory just a few runs away.

Each batsman can either score 30 runs or face 30 deliveries before they are required to retire, but can return later in the innings if their teammates are dismissed.

The same day Mid North Coast 4/140 rounded up Hunter Taveners 139 at Peter Fenwicke Oval and then the following day won their first Michael Collins Memorial Shield, when they rolled Port Jackson 9/189 to 9/153 at the same venue.

The Michael Collins Memorial Shield is played between the two clubs in honour of the former Parramatta Rugby League Player who played cricket for both Mid North Coast and Port Jackson. Chief organiser Bill Duncan who wasn't playing due to an injury he suffered at the National Over



Vets cricketers enjoyed dinner at the Commercial Hotel
Left to Right: Eric Higgins, Bill Duncan, Dale Brazel, Mayor Eric Noakes, Steph Sweeney, Stephen Haslem and Barry Everingham

60's titles in Perth late last year, would like to thank Betts Transport, E.T.E Services and IGA for their support along with the New England Hotel (Welcoming BBQ) and the Commercial Hotel (Dinner) for their hospitality.

Last, but far from least, Bill was full of praise for curator Daniel Boyd on a job well done at both venues.

NOWENDOC | NSW



AUCTION



Land Size - 316 ha | 781 ac *

5 2

Tightly Held High Rainfall Grazing Country

- Water is a feature with 2 creeks and 6 dams, most of which are spring fed.
- A mixture of open grazing sections, well sheltered timbered grazing and established forest country. Natural pastures.
- Well fenced into 7 main paddocks and a laneway system for stock movement.
- A comfortable 5-bedroom home and a large machinery / storage shed. Steel cattle yards with crush and large holding yards.
- Plenty of scope to improve this property in a highly sought after area.

Pee Jay is offered for genuine sale & will be auctioned if not sold prior. A detailed information memorandum is available via request to the listing agent. Inspections are by appointment only.

AUCTION - 29th February 2024

Address: "PEE JAY"
9485 Thunderbolts Way, NOWENDOC NSW

Contact: Simon Burke 0427 634 341
sburke@dcco.com.au

Auction: 11am, Thursday 29th February at the
Darling Street Community Centre Tamworth



Bernie Brady saddles in the feature film 'Just a Farmer'

From Leila Sweeney

As I was writing *Just a Farmer* I could visualise every scene unfolding in my mind. Every detail, from the characters' clothing to the backdrop of each scene, played out in my imagination. My writing process is an immersive experience; the story takes on a life of its own, often I have no idea where it is going to end up.

I have things from my life that I wanted to include that have a significant meaning to me and in some ways a reason why I wrote this story. During my teenage years, I spent many weekends at Brady's Saddlery. I would repair rugs, fix broken tack, and do some odd jobs around the workshop. I would listen to Old Tom's captivating stories and humorous anecdotes. Though Tom has since passed away, he and Bernie are renowned as two of Australia's finest saddle makers. It was during my time at the Saddlery that I gained an appreciation for the importance of a high-quality saddle and the craftsmanship that goes into making one. My natural creativity and passion for crafting were encouraged by Bernie, who patiently listened to my youthful, often unconventional ideas and dreams for the future.

You may wonder how these stories tie into the film *Just a Farmer*. In the film, I insisted that all the saddles used be Bernie's, and I wanted to feature one of his Australian Stock Saddles in a particular scene. The saddle showcased in the film is a custom creation made by Bernie for me, and it holds a special place in my heart. It is comfortable, fits all my horses perfectly, and will outlive me, but the best thing about it is that I feel safe in it. Bernie knew exactly what the saddle needed to suit me, and he gave it just enough bling for my tastes.

Old Tom once told me that one couldn't work at a saddlery without mastering the art of cracking a whip. He taught me the intricacies of various whip types, including stock whips of different lengths and bullock whips. He even guided me in whip-making, although I'll never



Leila on set of *Just a Farmer* with one of Bernie Brady's stock saddles

match his plaiting skills. As we worked on our whips, Tom told me with stories of his younger years as a stockman.

My father, too, had his own experiences working as a station hand and drover in Western Australia. I loved listening to these stories, as they were shared by men who had truly lived the lives of stockmen and drovers. These stories profoundly influenced my portrayal of Alec, the farmer in *Just a Farmer*. Alec embodies the essence of an Australian stockman. His attire consists of practical work clothes, his daily uniform, and he rides proudly in an Australian Stock Saddle.

Pitt Son's REAL ESTATE & LIVESTOCK

SAM PAYNE 0428 667 404 | ANDREW BLOMFIELD 0428 667 402

RON VINCENT 0427 775 821 | TROY DAVEY 0427 157 557

FOR LATEST
UPDATES



6777 2000

www.pittsons.com.au

CHARMING HOME PERFECTLY LOCATED

A SHORT WALK TO TOWN CENTRE



- Two bedrooms
- Open lounge plan
- Dining and kitchen
- Cosy wood fire
- Generous shed with endless possibilities

~~\$380,000~~ **\$370,000**

LOVELY FLAT BLOCK, NO STEPS



- Charming three bedroom home
- Spacious lounge room
- New kitchen boasting ample cupboard space and a new dishwasher

- New carpet
- Fresh interior and exterior paint
- New roof
- Secure lock-up garage

\$480,000

Ram Sale 40 RAMS

INCLUDING
17 POLLS



Friday 2nd February 2024 – 1pm
Inspections 11am at Walcha Showground



SELLING AGENT
John Croake 0428 977 589

OWNERS
Paul & Sally Pittman
0429 260 600

Donate your drink bottles to help our swimmers

Walcha Swimming Club are encouraging locals to help them with their fundraising by donating drink bottles which they can recycle for cash.

"We have a yellow bin at the pool and the money we raise through the 'Return and Earn' program will allow us to provide our young swimmers with breakfast after squad training, as well as assisting us with our swimming awards," Swimming Club President Yolanda Mooney said.

Most drink containers can be donated, just look for the 10c label on the container to see if it is eligible for a refund. Remember to leave the lids on when returning your containers as they can be recycled too.

Good to go: most drink bottles and cans

These containers are most commonly found as litter in NSW. They're often consumed 'on the go'.

- Cans (e.g. soft drinks)
- Bottles (e.g. beer bottles)
- Cartons
- Juice boxes or poppers

Most containers between 150ml and 3 litres are accepted and can get you a refund.

However, they must..

- Be in good condition (not be crushed or broken)
- Be empty
- Have the label attached.
- Look for the 10c label on the container to see if it is eligible for a refund.



PETER BRAZEL

HAY & SILAGE SALES



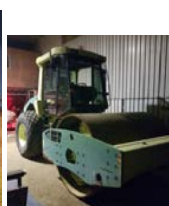
Silage Contracting

22 TON EXCAVATOR - 13 TON LOADER
15 TON VIBRATING ROLLER

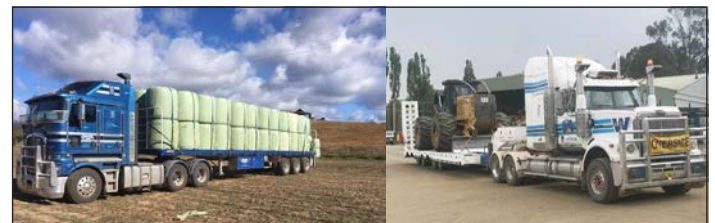
Tipper

PASTURE SPRAYING

D3 DOZER - 45ft DROP DECK TRAILER



Peter 0427 013 133 or 6777 6534
Irwin 0408 311 321



45ft flat top • 45ft single deck cattle float • 26mtr B Double
19mtr mini B Double • Low Loader available for hire



BRIAN
Smith
TIMBER
TRANSPORT

Call us for
your large
Transport
needs

WALCHA
02 67772126

Bonnie Smith 0429 772 077
Brian Smith 0427 780 216

Sanity prevails south of Walcha in the New England Renewable Energy Zone

Member for Northern Tablelands Adam Marshall MP has welcomed the decision by NSW EnergyCo to remove the southern-most pieces of electricity transmission infrastructure proposed by the department as part of the New England Renewable Energy Zone (REZ).

"Finally some sanity has prevailed with EnergyCo and we are getting some sensible decisions being made that reflect the reality of the local situation and community views," Mr Marshall said.

"Everyone in Walcha has known for some time that there were no, and should be no, renewable generation projects happening south of Walcha.

"The farmers don't want them, haven't signed up for them and have made it clear they have no plans of ever doing that.

"So if they don't want to host renewables then why was EnergyCo planning for an enormous electricity substation and transmission lines south of Walcha?

"It simply didn't make sense, when there are other landholders in other areas happy to host renewables.

"Finally we are starting to see common sense prevail and evidence that EnergyCo is listening and is going to plan a renewable energy zone that actually matches on-the-ground reality."

Mr Marshall said that while EnergyCo was yet to make the change public, he had confirmation that it had begun informing impacted landholders, as well as Walcha Council.

The change will see the south electricity hub (one of five proposed) and associated transmission line removed from the REZ.

"I've been pushing the Minister and EnergyCo to start making the New England REZ work for those of us carrying the impact of the renewables transition," Mr Marshall said.

"I consider this decision a step in the right direction, but there needs to be many more, and I'm putting EnergyCo on notice that our communities will continue to advocate and demand outcomes which benefit us, not just the aspiring developers."



LOCAL BUSINESS SPONSORS



Thank you to the businesses who generously donated to support the Rotary Club of Walcha's Christmas Stocking raffle: Walcha Royal Café, Walcha Smash Repairs, Walcha Veterinary Supplies, Walcha Energy, Hoy's Ready Mix Concrete, New England Accounting & Taxation Services, Mobile Fix Auto & Air, OK Earthmoving, Shearer's Quarters Barber Shop, Pitt Son's, IJ & CK Cameron Electrical, John Stuart Towing, The New Birds Boutique, Carlo's IGA, Norm & Di Bazeley, Café Graze, Walcha Craft Shop, Zenziwear, Walcha Fruit Shop, New England Hotel, New Beginnings Hair Salon, Paperdolls House, Patterson Byfield Bryen, Walcha Carrying Co., Regional Australia Bank, Walcha Telecottage, Ian Bird Electrical, Moon's Bakery, Walcha Pumps & Irrigation, Apsley Motors, Walcha Post Office, Cross Bros. Butchery, Café Amor, National Australia Bank, Walcha Newsagency, Richardson's Home Timber & Hardware, Nutrien Boulton's, Commonwealth Bank, Walcha Motel, Stack's Law, Commercial Hotel, PKF Lawler, Neil Dark Plumbing, M Ballard Builder, Thunderbolt's Takeaway, Walcha Chinese Restaurant, King's Amcal Pharmacy, Walcha Tyre Service, Elder's Walcha, Peter Norbury Motors, Linmac Engineering, Apsley Arms Hotel, Mountain Motors, Walcha Gas – Elgas, Betts Transport, Royal Hotel, Ron Latham Building, Wayne Hoy Spraying, Treetop Services, Brian Smith Timber Transport, Barry & Mona Spry, John Wall Engineering, AgFix, Oxley Explorer, Simon Wall Machine Hire, Cameron Martin Fertiliser Services, Samantha Physiotherapy, Marchant Bros., Stuart & Samantha Bayley and family, Dan & Aggie Micallef.

We wish you all a happy and prosperous New Year – Rotary Club of Walcha 2023

Winterbourne Wind ... What will we hear?

For a wind project to be compliant, the noise level from the turbines should not exceed 35dB(A) or the background noise plus 5dB(A), whichever is greater.

So, what does 35dB sound like? It is similar to the sound of a quiet library or a soft murmur. OK, not too bad.

But there is more ... What is background noise plus 5dB? Background noise is 'measured' by the developer, then 5dB is added. This now becomes the allowable noise from the wind farm. The background noise plus 5dB for the Winterbourne project means some households have allowable noise levels of 41dB. Again, not too bad.

Unless ... the developer's sound report 'underestimates' the noise from the turbines or 'overestimates' the background noise. Unfortunately, the developers are focused on maximising the number of turbines, not minimising the noise nuisance to nearby residents. This is particularly the case if the developers are also supplying the turbines (Vestas).

Voice for Walcha commissioned a Peer Review of the Winterbourne Wind Noise and Vibration Assessment (NVA) which was undertaken by Les Huson and Associates on behalf of the Walcha community because of concerns around some of the findings in the noise assessment undertaken by Sonus on behalf of Winterbourne Wind. This review questions - on a number of grounds - the validity of this assessment.

This Peer Review states ...

"The NVA significantly underestimates the noise impact in the community surrounding the proposed wind farm by at least 14dB."

If we add 14dB to the projected noise levels of non-involved households in the proximity of the Winterbourne Wind project, the noise resulting from the windfarm could be 55dB or higher.

What does 55dB sound like? **55dB is the sound of moderate to severe snoring. Remember, this is 24 hours a day at residences that do not receive any financial benefit from this project.** Adding 14dB means some involved residences may have noise levels of 60dB.

This is obviously a major concern for all residents who live in the vicinity of the Winterbourne Wind Project. It should also be a major concern for the developer and the host landholders. If a project is found to be non-compliant, even if it has been approved by the Planning Department, this can result in the turbines being shut down and damages awarded to complainants. A possible interpretation is that the Host Landowners can be forced to take on the role of developer, therefore may be responsible for the noise nuisance that occurs.

It is in the whole community's interest to ensure a compliant noise and vibration assessment is undertaken by Winterbourne Wind to ensure noise compliance before the project is progressed through planning. On this front, Winterbourne Wind Farm are very quiet. To date, there has been no commitment that this community commissioned Peer Review will be addressed. In fact, there has been no acknowledgement at all.

If anyone is concerned about noise caused by the proposed Winterbourne Wind Farm, please get in touch with Voice for Walcha.





There has been plenty of discussion about Australia Day during recent times, about if it should or shouldn't be observed, but one thing our family will always hold close to our hearts on 26 January is we lost mum Colleen that day at the much too young age of 49 years. At least she is now with her husband I.J Cross along with her parents Harold Alexander Keightley and his wife Laurel. May they all continue to rest in peace.

...

Best of luck to Walcha Rough Riders Lachie and Benji Provost when they compete in the ABCRA Junior National Rodeo finals at the AELEC in Tamworth this Thursday, Friday and Saturday. Lachie will be competing in the 11-14 years Mini Bulls event while Benji is lining up in 8-11 years Mini Bulls and Steer Ride. Go Gettum Boys.

...

It was great to catch up with a few old familiar faces when the veterans Over 60's cricket carnival was held here in town last week - either blokes I had played cricket or footy with or against over the years. There were plenty of yarns told over a refreshment or two with most pretty close to what actually went on at the time.

...

Three of the players from the Mid North Coast North Coast team Brian Holstien, Eric Higgins and Rob Lamb were members of our Wheatons Touring Team which played in Brisbane Country week between Boxing Day and New Years Day back in the 1980's. Another Mid North Coast player was Barry Everingham a very talented wicketkeeper/batsman and Rugby player who we used to battle with when he played district cricket for Armidale.

...

On one of the Wheatons, tour Captain Eric Higgins introduced a few rules including no drinking while our team was batting which came unstuck on Day 2 of the carnival. The day before skipper Eric had scored

a century and when he went out to bat on the second day a few of his team mates who were a bit thirsty at the time, thought as he would probably be at the crease for a while, just one beer wouldn't hurt. Well wasn't there a scatter when Eric was dismissed cheaply, some blokes ducking out behind the dressing shed to scull their beer.

...

Former Tamworth City Rugby League player David Head played with the Hunter Taveners last week and remembers a torrid Group 4 Minor Semi Final here at the park in 1977 which included a fierce all in brawl early in the game where our prop Ian Cameron had his nose badly broken. We won the game 16-9 after brilliant five eighth the late Bobby Delaney scored a try and kicked four goals while halfback Des Hanna crossed for the other Roos try. All City's points came from their centre David Head who touched down on three occasions.

...

Former Gunnedah Bulldogs player David Jurd, brother of Parramatta and North Sydney prop Stan Jurd, played for New England along with ex Armidale Rams player Lee Fittler, local Stephen Haslem, North Haven ring in Stevie Sweeney, Colts pair Dale 'Fox' Brazel and Craig Stoddart who was the only batter to score half a ton over the two days.

...

Before play commenced on one of the days, one eagle eyed player suggested the pitch at John Oxley Sportground looked a bit long. When measured it was found to be about a metre over in length and had to be re-marked before play could take place. Besides that one little hiccup curator Daniel Boyd did a great job preparing both pitches at Peter Fenwicke Oval and John Oxley Sportsground. Good on ya Daniel.

...

In just under 40 years of living at our current residence at Apsley Street I have witnessed a few blue tongue lizards present but thankfully no snakes. Well up until last Sunday around lunch time when a five foot black snake slithered down the side of the house. Not as bad as the tiger snake that entered the premises at the Newie last Saturday morning before opening hours. It was relocated by snake catcher Brad 'Dr Dolittle' Keable.

...

With the way the hot weather is predicted over the next few days one of the best places to be this afternoon would have to be the annual Pool Party held at the Walcha Memorial Baths. Supported by the Walcha Council entry is free as is the sausage sizzle from 5pm and the inflatable obstacle course will be on offer from 1pm to 6pm. Mad if you miss it.

Not Clean, Not Green, Not Net Zero.

RECKLESS RENEWABLES RALLY CANBERRA

DATE
TUES 6 FEBRUARY



TIME
10.00AM



WHERE
PARLIAMENT HOUSE
LAWN, CANBERRA



NOT HERE, NOT THERE, NOT ANYWHERE

Like to attend but need transport?

Email recklessrenewables@gmail.com
to find out more about transport to the
event from your area.

Shalimar White Suffolk Stud Uralla

Registered White Suffolk

RAMS for SALE

Excellent quality | 18 months old
| Ready to join | Brucellosis accredited free

\$600 plus GST

Call Joe van Eyk on 0417 614 755
W indee" 404 Gostwyck Rd

Cricket

Walcha/Uralla v Guyra 3rd Grade

Guyra

T LOCKYER c B Jex b C Mooney.....	1
T FOSTER c? b C Mooney.....	2
J LENEHAN c B Jex b C Mooney.....	0
M FOSTER b C Mooney.....	0
L FOSTER b C Watts.....	3
T MITCHELL b C Watts.....	10
H BRAZIER c? b N Swan.....	12
N FOSTER b M Tasik.....	9
C BRENNAN r.o.....	10
D MITCHELL c? b M Tasik.....	3
L BROWN n.o.....	1

Total 59. Extras 8. Bowling (overs/maidens/wkts/runs)

C Mooney 4-1-4-9, P Mooney 4-2-0-5, N Swan 4-0-1-13, C Watts 4-0-2-15, D Morley 2-0-0-5, M Tasik 2-0-2-1.

Walcha/Uralla

P EDDINSTON c? b C Brennan.....	0
B JEX b M Foster.....	11
D MORLEY c? b M Foster.....	6
P MOONEY c? b M Foster.....	0
N SWAN c J Lenehan b N Foster.....	15
B MOORE n.o.....	15
C WATTS n.o.....	2

Total 62. Extras 13. Bowling (overs/maidens/wkts/runs)

C Brennan 2-0-0-14, L Brown 2-0-0-7, M Foster 4-0-3-6, L Foster 2-0-0-9, T Michell 2-0-0-11, H Brazer 2-0-0-8, N Foster 1-0-1-7.

Walcha/Uralla v Guyra 2nd Grade

Guyra

T MARTIN c E Blomfield b C Boyd.....	6
I PEARSON c S Rafferty b M Harper.....	2
D TORRENS c S Little b B Hall.....	0
C TORRENS b C Boyd.....	19
B WILLIAMS b C Boyd.....	0
A BONEY c S Little b C Boyd.....	8
M BLAIR c E Blomfield b C Boyd.....	0
L PERRETT b E Blomfield.....	9
T TANNER c M Harper b D Boyd.....	2
T PATTERSON n.o.....	7
G BEATTIE n.o.....	4

Total 69. Extras 9. Bowling (overs/maidens/wkts/runs)

M Harper 4-1-1-6, J Sherrin 3-0-0-13, C Boyd 4-0-5-15, E Blomfield 3-0-1-6, D Boyd 3-0-1-11, B Hall 3-0-1-19.

Walcha/Uralla

E BLOMFIELD lbw M Blair.....	0
B HALL b T Tanners.....	14
D BOYD b T Tanners.....	18
S RAFFERTY n.o.....	45
S LITTLE b C Torrens.....	0
B MANSFIELD c? b C Torrens.....	2
J SHERRIN b C Torrens.....	0
C BOYD b A Boney.....	37

Total 131. Extras 14. Bowling (overs/maidens/wkts/runs)

M Blair 4-0-1-24, D Torrens 4-1-0-17, T Tanners 4-0-2-38, C Torrens 4-0-3-23, G Beattie 1-0-0-19, A Boney 2-0-1-5, L Perrett 1-0-0-5.

Walcha/Uralla completed their Armidale and District T20 competitions with a win in both 2nd and 3rd grades against Guyra at Rologas No 1 ground in Armidale last Saturday.

In 2nd Grade Walcha/Uralla set their opponents a total of 131 off their 20 overs while losing seven wickets along the way.

Number four batter Shannon Rafferty scored an unbeaten 45 and put on an 82 run seventh wicket partnership with Cooper Boyd who made 37.

Man of the match Boyd then backed up to snare 5/15 off his four overs whereas opener Matt Harper, Ed Blomfield, Daniel Boyd and Ben Hall all picked up a wicket each to dismiss Guyra for 69.

In 3rd grade Guyra posted a modest total of 59 off their 20 overs after Walcha/Uralla opener Cameron Mooney tore through the top order capturing four wickets during his first 14 deliveries before ending up with 4/9 off four overs.

The other wicket takers were Matt Tasik 2/11, Chris Watts 2/15 and Nathan Swan 1/13.

Walcha/Uralla passed their assignment with five overs up their sleeve losing five wickets in doing so.

BEEN A WHILE SINCE YOU REVIEWED YOUR FARM INSURANCE?

Helpful. Efficient.
Timely.
George MacDonald
Wallabadah NSW

Contact us today
to request a tailored
farm insurance quote.

Keeping farmers farming

Join thousands of
farmers making the
switch to direct specialist
agricultural insurer
Achmea Australia.

Call 1800 724 214 or
visit www.achmea.com.au



Farm Insurance

Insurance issued by Achmea Schadeverzekeringen N.V. (Achmea) ABN 86 158 237 702 AFSL 433984. The information in this document is general advice only and does not take into account your individual objectives, financial situation or needs (your personal circumstances). This means any advice may not be appropriate for your circumstances. Before using this information to decide whether to purchase the insurance policy, you will need to consider the appropriateness of any general information or advice we give you and how it relates to your specific situation to ensure the insurance cover meets your needs and the relevant Product Disclosure Statement and Target Market Determination (TMD) available from the 'Downloads' section of our website achmea.com.au/downloads. For feedback and complaints, visit achmea.com.au/complaints. To view Achmea Australia's privacy statement, visit achmea.com.au/privacy.



Deb Maddox
FARM INSURANCE
SPECIALIST
Tamworth region

REQUEST A QUOTE

1800 724 214
www.achmea.com.au

Both Blaine Moore and Swan contributed an unconquered 15 runs each while Veteran opener Bob Jex chipped in 11 runs at the top of the order.
The T20 Grand Finals will be played at Armidale Sportsground this Friday 26 January where Second Grade have qualified to play Easts from 1pm.
Then on Saturday 3rd Grade take on Easts Green at a ground to be confirmed whereas 2nd grade have had their scheduled match against TAS postponed.

Bowls

Draw for this Saturday 1:00pm Start

A Grade singles:

K.Goodwin v T.Parker marker F.Cameron
S.Goodwin v E.O'Keefe marker G.Clare
J.Kerr v B.Goodwin marker N.Goodwin
M.Hamel v K.Creighton marker S.Bath
G.Carter v J.Asmus marker B.Kliendienst.

If anyone is unavailable to play please let your opponent and marker know.

At the Nineteenth

Playing off a handicap of one, club champion Andrew Bowden scored an incredible 42 stableford points off the back of a five under par 65 last Sunday to win a club trophy.

Runner up was his father Jamie on 37 pts.

While the remaining sweepstake prizes went to Miles Archdale 36, Jenny Lisle 34, John McLaren 34 and Wayne Brennan 33 in a three way countback with John McCormack and Junior Hamish Warden.

Sharpest shooters at the pins were Margaret Davidson (3) and Jamie Bowden (16).

In match play Miles Archdale defeated John McCormack 2 up and James Norton rounded up club head honcho Allan Green 2 and 1. Last Saturday Crichton Barr accumulated 20 points to win the weekly 9 hole competition ahead of Jenny Lisle on 17 points which included the N.T.P on 3.

The previous Saturday club greenkeeper Mark Hogan got the job done with 20pts, runner up was Jenny Lisle after she racked up 18 points whereas Lorraine Rennie hit the most accurate tee shot at the third pin.

This Sunday is a Multiplier Draw for partners where Wayne Brennan and former English Wrestler Mal Ballard are in charge of supplying the prizes.



In Memoriam

Robert Edward Crisp

24.1.21

Those we love don't go away
They walk beside us everyday
Unseen, unheard but always near
Still loved, still missed and very dear
Rest in Peace
Bent ak e Bob

Colleen Cross

26.1.1986

Rest in love and peace
For what the heart has once owned
It shall never lose
Miss you Mum

Positions Vacant

Walcha Council Positions Vacant



We have a number of existing positions available and are seeking suitable applicants to join our team in 2024.

WHS Advisor Walcha Council & Uralla Shire Council

Applications close 29 Jan 2024. A shared role between Walcha & Uralla Council's for a passionate Work Health and Safety expert.

Manager Urban & Utilities

Applications close 29 Jan 2024. We are looking for a permanent manager for our Water, Wastewater, Urban and Waste teams.

Manager Strategic Planning & Environment

Applications close 29 Jan 2024. A great package available in a multi-disciplinary role for a strategist in planning, development and the environment.

Disaster Risk Reduction Coordinator

Applications close 29 Jan 2024. A funded position available on a term to 30 Aug 2024 with a possibility of a 3 year extension. Providing valuable services to the Walcha LGA in our disaster preparedness and resilience.

Please visit Council's Positions Vacant page for more details and to apply. <https://bit.ly/3A30YDc>

Phil Hood, General Manager

Walcha Council, PO Box 2, Walcha NSW

Lost

Small gold clip on earring – if found please call Janice on 0429 772 650.

Public Notices

Walcha Courses

New England Community College

- **Prepare** to work safely in the construction industry – White Card – Monday 29th January 2024
- **Provide** Responsible Service of Alcohol (RSA) – Tuesday 30th January 2024
- **Provide** Responsible Gambling Services (RCG) – Wednesday 31st January 2024

Course will be held at Walcha Vets Supplies, 6 Aberbaldie Rd, Walcha NSW 2354

For any inquiries please contact the Guyra Office on (02) 6779 2132, admin@gala.org.au

Walcha Council

Part Day Public Holiday



A part day public holiday is to be observed in the Walcha Council Local Government Area commencing at 12 noon and finishing at 6:00pm on Friday, 09 February 2024 for the Walcha Jockey Club's Race Meeting.

The Public Holidays Amendment Order 2023 under the Public Holidays Act 2010 was signed by the Minister for Industrial Relations on Tuesday, 19 December 2023.

Phil Hood, General Manager
Walcha Council, PO Box 2, Walcha NSW

Walcha Council

2024 Street Stalls



Applications, IN WRITING, are invited from local organisations for the allotment of dates for STREET STALLS, FETES, MARKETS and the like on FRIDAYS & SATURDAYS ONLY, in 2024.

By Council Policy, each organisation is limited to two (2) Street Stalls per year, to be held only in the street stall shelter, provided that where a surplus of dates is available they may be allocated at the discretion of the General Manager.

Applications are to state SPECIFIC DATES and to give ALTERNATE DATES where possible. However, organisations should be aware that dates are allocated in order of receipt of applications.

Organisations are also requested to provide the names and contact details of current Executives of their organisations so that a current register can be kept at the Council for quick community use.

Phil Hood, General Manager
Walcha Council, PO Box 2, Walcha NSW

For Sale

101 first x ewes (3 – 4 yrs old) joined to Border Leicester Rams. \$105 ea. Ph George 0427 018 493.

Red Gum log splitter, like new. Honda motor \$2000. Ph 0428 931 233.

Layer pullets, all breeds, 20 wks. Delivered Friday 16.2.24. Phone Jim 0428 194 105.

Meetings

Council Meeting January 2024



Council will be holding an Ordinary Meeting of Council on Wednesday 31 January 2024 commencing at 3pm at Council Chambers, 2W Hamilton Street Walcha.

Preceding the meeting EnergyCo will present to Councillors at 2pm to discuss the latest regarding the New England REZ – members of the public are welcome to attend as observers.

Phil Hood, General Manager
Walcha Council, PO Box 2, Walcha NSW

Walcha Garden Club meeting Friday 2 February. Garden 1 – Brigitte Hone's garden, 326 The Gap Rd Uralla for morning tea. Garden 2 – Ian & Dar Brookes' garden, 'Kamarra', 307 Kelly's Plains Rd, Armidale for our lunch and meeting. Cars departing McHattan Park at 9.00am. BYO chair, lunch and cup. Enquiries: D Bailey 0403 464 865, D Lisle 0429 799 083. New members most welcome.

Thank you

To those who sent cards and gave personal condolences for 'Paddles', please accept this as our personal thanks. Denis, Vicki, Jenny and families.

THE APSLEY
Advocate

Deadlines

Advertising & Sport
Mondays 4.30pm

Book your Ad's early
to avoid disappointment

trade and professions



Nick Moore PLUMBING & EXCAVATION SERVICES

WALCHA & SURROUNDING AREAS



Highly qualified and experienced plumber
All aspects of Plumbing and Gas Fitting
Wood heater installation
Roofing and Guttering
Gold License No 59555C

Nick 0418 691 306

nickmoore203@yahoo.com.au

Katy 0422 034 660



CURTIS

MOWERS & SMALL ENGINES

ALL TYPES

- Mowers • Ride-ons
- Pumps • Chainsaws
- Whipper snippers
- Chain sharpening
- Bar dressing

SELLING New 30 & 40 Tonne Petrol Hydraulic
WOOD SPLITTERS

- Chainsaw chain • Pumps & Generators •

JAMES – 0488 020 762 (7 Days)



CPC SPRAYING SERVICES

- Boom and Reel Spraying
- GPS Fitted 4WD Small Truck

Phone Peter 0404 471 105

ENGINEERING

John Wall

- Stock floats • Feeders • Sheep & cattle yards • Steel framed sheds & mobile welding

6778 0588 • 0428 778 087

MOBILE-FIX AUTO+AIR

Mobile Repairer &
Airconditioning Specialist

Licensed Vehicle Repairer
Lic.No.46696 RTA Lic No. AU22616

PATRICK STACE – WALCHA

Mob. 0428 780 077 Ph. 6778 0595



CHIROPRACTOR

K Samantha Goor

B.Sc. Anatomy (NSW) M Chiroprac (Macq)

Tuesday & Friday from 9.00am

6777 1340

STACES FAST FREIGHT

Delivering
Tamworth – Walcha
0429 608 409



STORAGE CENTRE WALCHA

20' Containers available for rent \$35 pw + GST
Secure Undercover parking for cars,
vans etc \$15 pw +GST

ANGUS 0427 787 332



Andrew: 0427 549 748

Toni: 0421 972 354

A G W RURAL CONTRACTING

GPS Equipped boom spraying

Andrew Wauch 0427 549 748

JK | PACIFIC TILING

WALL & FLOOR TILING
WATERPROOFING

0419 972 129

Email: jake.kerby@hotmail.com
ABN: 76781656814 Licence no: 335540c

Tree lopping
Tree removal
Truck & chipper
Bobcat
Post hole digger
Trencher
Woolshed cleaning
Stockyard cleaning



Scott Kermode
0427 100 889

**TREETOP
services**

treetopservices@bigpond.com



M L MASSAGE THERAPY

Remedial and Sport Massage

MADDIE LANCE

TUES TO FRI 9AM - 6:30PM

0432 635 994

MOBILE
TREATMENTS
AVAILABLE

church notices



ANGLICAN

Family Service 10.00am

Phone 6777 2543 or email:

walchaanglican@gmail.com

PRESBYTERIAN

Walcha sunday 9.30am

All welcome. Phone 6777 2539.

CATHOLIC

Sunday Mass 10.00am

DISCLAIMER LETTERS TO THE EDITOR are submitted on the condition that The Walcha Telecottage as the publisher of The Apsley Advocate may edit and has the right to, and license third parties to reproduce in electronic form and communicate these letters. They are published at the discretion of the Editor and Board. The Apsley Advocate is printed by The Walcha Telecottage, PO Box 116 Walcha NSW 2354. Phone 6777 1111 Fax 6777 1112. The Walcha Technology Co Operative Limited, the Editor and Staff of this Newspaper have published any article here-in in good faith and bear no responsibility in respect to the accuracy of the information contained in such article. Any person or persons publishing material in this Newspaper do so in the knowledge that they shall personally accept any responsibility for the accuracy and other correctness of such articles and also accept full responsibility for the legal consequences if it be found that the article contains any inaccuracies in the contents of any such articles. **DEADLINE MONDAY 4.30PM** Editor: Anthea Macpherson. Advertising and Sport: Rosalie Gibson, Megan Scrivener, Emily Scrivener and Joscisca Matapakia.

Marchant Bros. Pty. Ltd. Est. 2000

WATER CARTING

DELIVERING
7 DAYS
A WEEK

WALCHA COUNCIL
CERTIFIED DOMESTIC
**WATER
CARTER**
10,000 litre tank



A FULL RANGE OF AFFORDABLE TRANSPORT & EARTHMOVING
Dam construction/maintenance, stick raking, road building,
site prep, pipe laying and all timber work.

Check out our website for the full range of machinery,
attachments and services available

FIREWOOD AVAILABLE

Earthmoving and Heavy Haulage Transport
Jason 0427 490 487

02 6777 2024 marchantbros@bigpond.com
www.marchantbros.com.au

BOWLING & RECREATION CLUB

Mon – Wed 4.00pm – Close

Thursday 25 12.00pm – Close

Ladies bowls from 9am

Friday 26 2.00pm – Close

2.00pm Bingo

6.00pm Bistro

- BBQ Prawn and Mango Salad
- Lamb Burgers
- Meat Pie Cobs
- Normal menu available, takeaway and delicious desserts.

6.00pm Free Bingo

6.00pm Tickets for raffles

MEAT & VEG TRAYS

8.00pm Raffles & Members Draw

Saturday 27 11.00am – Close

6.00pm Bistro

Sunday 28 11.00am – Close

12.00pm Bistro open. Children
U/10 kids meal free with an adult
order.

12.00pm Meat, fruit and veg
raffles. Drawn at 1pm
12-2pm \$5 schooners

Open as normal on
Australia Day - Raffles
and thong decorating
competition

Social Bowls every
Thursday. All welcome.
Names in by 12:30 for
1pm start

**MEMBERS
DRAW
\$50**

YOU MUST BE A MEMBER FOR
2023/2024 TO BE ELIGIBLE TO WIN

NEXT POKER GAME
SATURDAY 3RD FEB
FROM 3PM

Do you live in Walcha Shire? If so you MUST be a member to enter the Club
Social Membership \$15 – Full Membership \$105. PHONE 6777 2077

FOR ALL YOUR EARTHWORKS
TRANSPORT AND ELECTRICAL NEEDS

ALL ASPECTS OF RURAL, COMMERCIAL & CIVIL WORKS



- Freight & Transport • Machinery Float • Stick Raking
- Road construction and maintenance • Trenching
- General Earthworks • Drilling • Mulching
- Dam maintenance and construction
- Erosion Control • Site Preparation • Electrical Works

Ian Notley 04188 29188 • Mark Notley 0422 637 686
www.eteservices.com.au



LINMAC ENGINEERING

IF YOU NEED IT – We make it!

CUSTOM TRAYS AND TIPPERS



- Customer consultations to make sure we build to YOUR individual specifications
- Sandblasted and powdercoated
- Toolboxes, timber floors, tipper trays, water tanks ... whatever you need!

AUTHORISED HUSQVARNA DEALER



Check out our new facebook page:
Linmac Engineering Walcha

211N Pakington Street WALCHA
Phone 6777 2822 Email enquiries@linmacengineering.com.au