

THE APSLEY Advocate

CIRCULATION 1920 – P 02 6777 1111 F 02 6777 1112 wtc@walchatelecottage.com.au walchatelecottage.com.au

17 January 2024

Rodeo action this weekend

Airlie
Merinos & Poll Merinos

RAM SALE

Thursday 1st February



Sale at
Walcha
Showgrounds

50 RAMS

Including 25 Polls
White, Bright, Heavy cutting,
Non mulesed fine wools.

Walcha Showground
• Inspection 11.00am • Sale 1.00pm

JOHN CROAKE
0428 977 589
BRETT COOPER
0407 136 129

GRAHAM ANDREWS
0400 342 227
TODD CLARKE
0428 248 427

Murray Power: 0429 918 631
www.airliemerino.com.au


SALWAY
MATERNAL COMPOSITES

OPEN DAY

18 JANUARY
10am to 12pm
On Property

SALE 25 JAN
Online only at
 **AuctionsPlus**
www.salway.com.au

Rob Mulligan 0427 773 914
Matt Larkings 0427 002 427
Miles Archdale 0428 660 326
Simon Newton 0467 660 320

Nutrien
Boulton's



FRIDAY FREE ENTRY

- Campdrafting all day
- BBQ and Bar in operation.

SATURDAY

- Campdrafting all day
FREE ENTRY

SATURDAY EVENING

- FAMILY \$35
ADULTS \$15
CHILDREN 5 – 13 YRS \$5
UNDER 5 YRS FREE
- Gates open 4.30pm for Rodeo,
action starts at approx 7.00pm.
- Music from approx 6.00pm
- BBQ and Bar in operation

SUNDAY FREE ENTRY

- Campdrafting and finals
from lunch time.

Walcha is renowned for its iconic Golden Gate Campdraft & Rodeo, and this year it is set to showcase some exciting bronc and rough riding action at the Walcha Showground.

The event, which runs from Friday 19 through to Sunday 21 January, is gearing up to be an exciting one, with Saturday providing some a great entertainment for young and old.

The bronc riding will be a spectacle as this year it will be what is know as a 'Wild Ride' with competitors donning costumes.

The main event will be the bullock ride so get ready to expect the unexpected at this years Rodeo. Make it a family night out, or gather a group of friends and head on over to the showground as the 2024 Golden Gate promises to be a ripper! There will be a BBQ and bar in operation, along with entertainment on Saturday night.

For those who love their campdrafting there will be three days of action packed drafting, with free entry for spectators for the draft events.

Locals who would like to enter either the barrel racing, the steer or the bullock ride need to phone Harry King by Friday evening on 0428 772 050.

The Walcha Bushmen's Campdraft and Rodeo Association is always looking for new members to help with the organisation of this and future events. If you have a few hours to spare this week and are able to assist please call Harry King. The committee would really appreciate the help.



Imported Cattle Rail



115 x 42 x 2mm Gal – 6.1m length

\$10.00 per metre
including gst



Call 6777 2588 6 Aberbaldie Road, Walcha www.wvs.com.au



OK EARTHMOVING

Specialising in road construction & maintenance

• Stickraking • Dam building • Erosion works



Bulldozers • Excavator • Tip-truck • Vibrating Roller

PH 6777 7430 FAX 6777 7448

PETER O'KEEFE: 0429 944 821

Not clean, Not Green, Not Net Zero.

RECKLESS RENEWABLES RALLY CANBERRA



DATE
TUES 6 FEBRUARY



TIME
10.00AM



WHERE
PARLIAMENT HOUSE
LAWN, CANBERRA



NOT HERE, NOT THERE, NOT ANYWHERE

Like to attend but need transport?

Simply email us@voiceforwalcha.com
with as many details as you can so they
can assist organising transport to the rally.

around the traps



By SIMON NEWTON

Hard to believe Christmas was three weeks ago as 2024 has started just as quickly as 2023 went. Our season over the break continued to deliver patchy moisture around the district and just last week if you were under the storm, falls of between 50-90mm fell in a wave of water. Other people weren't so lucky and only recorded 5-10mm over the two days. I hope the forecast of more rain this week is correct as the moisture hasn't been sufficient, nor regular to let the grass get in front of the livestock. The major concern for many locals is the low water levels in their stock dams, with some now bone dry or too muddy for livestock. The weather prediction for later in 2024 is that we will enter back into a possible La Nina period which will be welcomed by all if it eventuates.

The first monsoon in the north is about to hit and has the potential to bring flooding rains back to large parts of northern Australia. The BOM is under pressure from everyone after the last failed prediction from cyclone Jasper when extensive flooding occurred which wasn't predicted. The ongoing rains are also making a mockery of the BOM predictions of a hot dry summer. The large mass of moisture sitting in the north, and along the east coast, will hopefully bring more moisture to our district, but when the wind is in the east, Walcha doesn't get a lot of rain.

The southern weaner sales started off a bit sluggish, but with large parts of the Riverina, Victoria and western NSW getting a drenching in the first week of January the sales responded and continued to get dearer as the second week of sales progressed. The weaners picked up in value by 20-30c/kg over the two weeks and saw quality steers selling from 310-350c/kg for suitable weight cattle to go into feedlots, while backgrounds paid from 320-400c/kg. Feature runs of breeder heifers managed to reach 350c/kg while backgrounds paid from 270-320c/kg for heifers to fatten.

The new year brought about a rise in both the beef and sheep markets with large areas on the eastern seaboard getting rain over the Christmas break. The rain was sufficient to stem the flow of cattle and sheep and give producers the confidence to hang onto livestock. Feedlot values jump 20-35c/kg within the first two weeks of trade, while over the hook kill values climbed by 30-40c/kg. The best of the PTIC females is now making \$2000/hd again while young quality cows with calves at foot are topping at \$2500. The best of restocking weaner steers is now making north of \$4/kg while the heifer portion is topping at 350c/kg. The lack of suitable kill lambs meant processors went head-to-head pushing lamb values in the yards up to nearly 800c/kg, which was a jump of nearly 200c/kg for trade weight lambs. Store lambs followed suit with restockers now paying from \$80-100 for suitable lambs to fatten. Mutton values have also risen from around 200c/kg to 300c/kg while restocking 1st X ewes sold to nearly \$300 at Forbes.

Tamworth yarded 1610 in what was a very strong market with all categories selling to dearer trends. All steers sold to dearer trends with the feeder steers picking up a 20c/kg increase, topping at 357c/kg for over 400kg while the heifer portion to feed topped at 334c/kg. Heavy export steers in prime condition topped at 292c/kg while the female portion made to 289c/kg for a domestic kill order. Cows sold to dearer trends by up to 8c/kg topping at 240c/kg which was 30c/kg behind Wagga on the same day which had cows topping at 270c/kg due to southern processor demand. 1500 sheep and 4000 lambs were yarded on Monday in Tamworth. Most categories sold to dearer trends with light restocking lambs selling from \$55 to \$97. Trade weight kill lambs sold from \$120 to \$174 while heavy export lambs topped at \$238. The mutton market improved with increased processor demand with merino wethers topping at \$90, XB ewes sold to \$88 and dorpers to \$90.

It's ram selling season once again in the New England, so be sure to check out your local seedstock ram breeders around Walcha, we really are spoilt with the local quality.

Leila making her mark on the film industry

When former Walcha girl, Leila McDougall (nee Sweeney) decided to make a film focused on rural mental health, it was her experience as both a farmer and a teacher that guided the message she wanted to convey.

"Creating a documentary about farmer health wasn't going to work because I know, as a teacher, if you say to kids, 'Do you want to watch a documentary or movie?', they're going to go movie," she said.

More than three years on, the finishing touches are being applied to *Just A Farmer*, a narrative drama Leila wrote, produced and stars in.

As the central character Alison, Leila plays a newly widowed mother-of-two, left with the care of an alcoholic father-in-law and a failing farm, after her husband Alec (Joel Jackson) suddenly dies. She is forced to reckon with the reasons for her husband's death while trying to forge a new path for her family.

In the movie Leila's daughter is played by her real life daughter Vivian, while her son Eric is played by Walcha's very own Oliver Overton. Ollie spent six weeks in Victoria shooting in March 2023 and from all accounts had an absolute blast.

Directed by Simon Lyndon and produced through Vam Paddock Productions, *Just A Farmer's* production took place predominantly at Leila and her husband Sean's property in Tatyoon Victoria in early 2023.

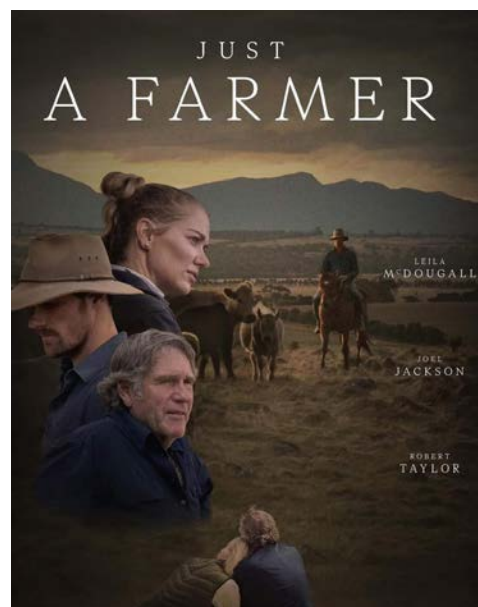
Leila, who founded rural and remote health charitable organisation Live Rural with her husband in 2014, was inspired to tell the story after growing up in rural Australia and witnessing the state of farmers' mental health.

"The conversation has definitely improved over the last ten years, but it's still not great," she said. "I don't want my kids to grow up in a world where they can't talk about their mental health and they're expected to behave and act in a certain way just because they're farmers."

Producer Ahalya Maharaj commented that it was such an authentic script, it was really about making sure she could help to get the movie made. While Director Lyndon, known for his appearances in *Chopper*, *Miss Fisher's Murder Mysteries*, *Puberty Blues*, *Mr Inbetween* and *Troppo*, initially boarded *Just A Farmer* in an undefined capacity, before being asked to helm the project in what is his feature directorial debut.

The surrounding Tatyoon community also played its part in contributing to the accuracy of the rural setting. Everyone from shearers to Leila's horse-owning friends came in as extras, while others dropped off food, or supplied various machinery.

A fine-cut screening was held in early August 2023, a process that aims to select the best takes and refine the pacing, rhythm, and tone of the story. It also gave a small audience the



Above: the official poster for 'Just A Farmer'

opportunity to provide feedback that would potentially be incorporated into the final edit.

Just A Farmer is scheduled for release on 21 March 2024 and we look forward to watching Leila's inspirational and authentic script come to life on the big screen.



Stock and Property Watch

www.nutrienharcourts.com.au

Family Home with views over town



- This spacious home is situated a short stroll from town.
- The weatherboard and iron home consists of four bedrooms, three with built- ins. The fourth bedroom has a walk in robe and large ensuite with corner spa.
- Open plan lounge with wood heater and the most amazing views of town.
- Spacious dining flowing through to the sun drenched family room with gas heating for winter.
- Huge timber kitchen with cooktop, under bench oven, dishwasher and an abundance of cupboards.
- Fully enclosed two-tier yard with covered entertaining area, wood shed, garden shed and double garage with remote access.

\$520,000 open to offers

Enquiries Peta Carter: 0407 350 781



For Rent

One bedroom unit for rent \$140/week

Please contact Peta Carter: 0407 350 781



New England Merino Field Day

Uralla Showground
Friday 12th Jan 2024
9am-4pm

On-property Ram Sale - 36 rams

1pm Thursday 8th Feb 2024
Inspections from 10.30am

Todd Whillock 0427 740 283

cloverbrook@antmail.com.au

1049 Campfire Rd Woolbrook NSW



**SHALIMAR PARK
MERINO STUD**

24th Annual
**On Property
RAM
SALE**

'Shalimar' 619 Bergen Road Walcha
Wednesday 24th January 2024

**55 BIG FRAMED
SUPERFINE & FINEWOOL RAMS**
(including 30 Poll Rams)

OJD-MN3 Accredited. Bruceellosis Free & Footrot free

Inspection 10.00am – Sale 1.00pm (EDST)
Interfaced with Auctions Plus

Contacts: Des and Jane Carlon 0427 787 339

Jack Carlon 0428 268 865

www.shalimarpark-merinostud.com.au



RAM SALE
25 JANUARY 2024

Online only at  **AuctionsPlus**

Contact Salway:
Rob & Anna Mulligan
02 6777 3914 or
0427 773 914

Nutrien Boulton's Walcha:
Miles Archdale 0428 660 326
Matt Larkings 0427 002 427
Simon Newton 0467 660 320



www.salway.com.au

 **GLENBURNIE**
MERINO + POLL MERINO STUD

**Ram
Sale**
**40
RAMS**

**INCLUDING
17 POLLS**



Friday 2nd February 2024 – 1pm
Inspections 11am at Walcha Showground



SELLING AGENT
John Croake 0428 977 589

OWNERS
Paul & Sally Pittman
0429 260 600

Electric vehicle charge station now in Walcha

Two NRMA EV Fast Chargers have been installed in Apsley Street and are already being utilised by travellers and locals alike. This will be great for all EV owners who can now charge up in Walcha.

NRMA has advised that everyone are currently able to use these charge stations for free, but in the future there will be a fee. Members of the NRMA will be eligible for a discount, with all motorists provided with plenty notice before this change is implemented.

The Transport for NSW partnership with the NRMA to deliver more fast chargers in the regions follows a recent announcement by the NSW Government of \$10 million. This was allocated under round two of the Destination Charging Program, which is expected to support the installation of at least 1,500 EV charge ports at tourist destinations.

The north west of NSW is the latest area to be rolled out, with chargers at Inverell, Narrabri, Moree and Dorrigo also switched on recently.



Runners get ready for the Walcha Foot Races



The Betts Transport Mile is on again for local, or local origin runners, fifteen years of age and over at this year's Walcha Race Carnival.

The foot race will be held straight after the first horse race at Walcha Races on Saturday 10 February. This means the foot race usually commences shortly after 1.30pm, although a definite start time will be confirmed and published in issues of the Advocate leading up to the race carnival.

Once again the ladies will run 1,500 metres, while the men will compete over 1,600 metres. The kids have not been forgotten, and while they will not be racing on the race track, a specified area will be used for their races. The Children's foot races will also be held on Saturday and commence at the conclusion of the Children's Fashion in the Field.

Chris Betts is once again sponsoring the footrace and there's great prize money up for grabs. So lace up those joggers and get ready to run.

All interested runners are asked to please contact Henry Williams on 0488 224 666, Steven Everleigh on 0417 297 915 or Lance Partridge on 0491 389 529.



PLC
PRESBYTERIAN
LADIES' COLLEGE
ARMIDALE
— 1887 —

Equip her for a life of significance

2025 Enrolments now open

plcarmidale.nsw.edu.au
02 6770 1700



Need a catalogue for your next sale?

Talk to the Telecottage.

We can design and print, or simply print your artwork for all sale material, including the following:

- **Catalogues** maximum 64 pages including cover
- **Labelled Envelopes** including mailing
- **Flyers**
- **Pen Cards**

telecottage
WALCHA

Phone 6777 1111

wtc@walchateleccottage.com.au

Hopeful for solid sale results



Sheep studs across the New England are at the tail end of preparation for this year's series of northern ram sales.

Over 1000 Merino and Poll Merino rams, combined with several drafts of terminal and maternal sires, will be on offer from mid-January to late February at on-property sales, with most being interfaced with AuctionsPlus.

Despite challenging seasonal conditions across the region, Elders District Wool Manager – Tom Henry, said agents were hopeful of a solid result and good clearance rates.

Tom has had the opportunity to inspect a number of the offered sale rams and said they look fantastic. He also stated that the up-coming sales are a great opportunity to invest in quality Merino and Poll Merino genetics, with rams to suit a range of breeding objectives and environments.

The New England Merino Field Days held in Uralla last weekend, January 12 and 13, provided studs the opportunity to showcase their sale rams.

With both catalogues and flyers hot off the press, local studs are eager to start the year with a bang.



120 PROFIT DRIVING RAMS

35TH YALGOO RAM SALE

**11:30am SATURDAY
27 JANUARY 2024**



- ✓ **Number 1** ranking MP+ ram in the industry – 220557
- ✓ **Top 2** ranking FP+ rams in the industry – 220557 & 220430
- ✓ **3 of the top 4** FP+ rams in the industry
- ✓ **Sale rams average** -Top 4% FP+ index
- ✓ **Top 9%** MP+ index
- ✓ **Top 20%** DP+ index
- ✓ **Top 5%** EBIT/DSE (2021 BM)
- ✓ **Industry leading** client benchmarking and wether trial data
- ✓ **Selection** is driven by profit not fads and validated through benchmarking, sire evaluations and wether trials
- ✓ **Maximum accuracy:** Entire flock genomic tested

Catalogues available at Sheep Genetics, www.yalgoogenetics.com.au, Auctionsplus

OR contact

Jock Nivison 0497 762 977

jock@yalgoogenetics.com.au

Calls for Nowendoc School closure reprieve

Northern Tablelands MP Adam Marshall is strongly objecting to a move to permanently close Nowendoc Public School, requesting the Department of Education give the community and local families another chance to find and enrol local students.

Mr Marshall said he was advised last week by the Department that it was commencing a process to close the school for good and sell off its assets, following three years of the school being 'in recess', with no students enrolled.

The MP said that despite the low number of enrolments in the past few years, there were new families moving into the area who would benefit from the school remaining available for the time being.

"If the Department is allowed to formally close Nowendoc Public School there will be no coming back, it will be gone forever," Mr Marshall said.

"Inevitably, the school buildings, land and even the Principal's house next door would be sold off, which would be a great shame and deny future Nowendoc district youngsters the chance to receive an education close to home.

"I think everyone understands the Department cannot keep the school 'in recess' indefinitely, but with some new young families moving into the area in the last 12 months, there should be one last opportunity given to the community to locate and enrol students.

"A new family has moved into the area recently with three young children, and another with two young children, who would benefit from the school remaining available and re-opening.

"Currently, one Kindergarten student travels from Nowendoc to Walcha to attend school, an almost 150-kilometres round trip on a bus each day.

"While Nowendoc is a small township, it is a beautiful and picturesque location with the potential to grow and develop, especially with many people looking to relocate for the rural lifestyle and due to cost of living pressures."

"The community and I strongly oppose the permanent closure until the Department of Education undertakes some further work to survey the community and cast the net widely for students," he said.

"In the meantime, Nowendoc Public School must remain in recess for the time being, to keep it as an option for future students currently in, or moving into, Nowendoc."

Mr Marshall said he has been in contact with the Minister for Education Prue Car about the decision, urging her to reconsider Nowendoc's permanent closure.



Walcha Mayor, Eric Noakes and Northern Tablelands MP Adam Marshall pictured at Nowendoc Public School.

Pitt Son's REAL ESTATE & LIVESTOCK

SAM PAYNE 0428 667 404 | ANDREW BLOMFIELD 0428 667 402

RON VINCENT 0427 775 821 | TROY DAVEY 0427 157 557

FOR LATEST
UPDATES



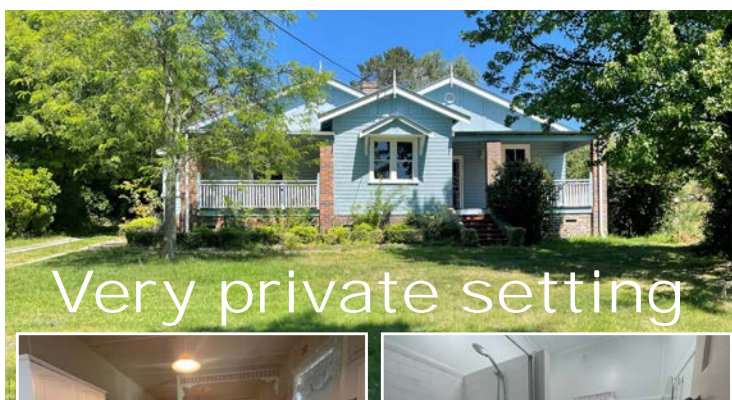
6777 2000

| www.pittsons.com.au



**Nestled in a great location
with great views over town**

- New modern kitchen
- Enjoy the convenience of a brand new bathroom with tub and shower
- New laundry completed with second toilet
- Polished floorboards throughout
- Wood fire
- New garage with roller door and adjoining car port



- Three bedrooms, two with built-ins
- Near new kitchen with island bench
- Lovely sunroom on Northern side
- Dining area
- Spacious loungeroom with woodheater
- Two bathrooms and toilets
- Very private setting with verandah overlooking garden
- Double lock up garage with roller doors

\$490,000



45ft flat top • 45ft single deck cattle float • 26mtr B Double
19mtr mini B Double • Low Loader available for hire



BRIAN
Smith
TIMBER
TRANSPORT

Call us for
your large
Transport
needs

WALCHA
02 67772126

Bonnie Smith 0429 772 077
Brian Smith 0427 780 216

PKF

PKF Chartered Accountants offer clients access to full suite of professional services including:

- Accounting and financial reporting
- Taxation Services
- Business Support
- Superannuation
- Cash flow projections
- GST support and advice
- Bookkeeping and record systems
- Audit and assurance
- Strategic alliances

www.pkf.com.au
12n Derby Street
Walcha NSW 2354
Phone: 6777-2377



letters to the editor



A letter to Walcha Lions Club

My daughter, Kylie Mathews and I, with Kylie's grandson Tommy visited the Lions Park in Walcha recently in the cool of the afternoon, and enjoyed a delightful time.

The venue was a perfect family fun area with so many impressive attractions. The tractor was amazing, showing how it operated and even had a crank start – many children would be unaware of such things. The lunch area was well situated and just right.

What a well planned and operated facility, with great safety for everyone. This is another feather in Lions members' caps. Thank you so much, we will return soon.

Jan Breeze

Christmas Cakes a big hit

We of the Walcha Lions Club wish to thank those who supported us with our Christmas Cakes this year. Especially those who did all the hard work selling them – the Walcha Post Office, Walcha Newsagency and Walcha Telecottage. Without your help it would not have happened.

Thank you

Lloyd Livingston

Fresh produce at the Walcha Farmers' Markets this Saturday

The first Walcha Farmers' Market of 2024 is on this Saturday, January 20, at McHatten Park and there'll be a great range of fresh produce, including bread, fruit and vegetables, oysters, trout and cheese.

For those wanting to make the most of good planting weather, vegetable and flower seedlings will also be available, along with ornamental plants and trees.

Come along to the January Farmers' Markets and enjoy a coffee and a sweet treat from 8.30am till 12.30pm, while catching up with friends.

thumbs



- 👍 To all the traffic that slow down for the stock signs, even though there is no stock.
- 👍 To Steph and John Cross who found my phone after I left it on the school oval. They managed to return it to me using a missed call notification. I consider myself very lucky as it easily could have ended up in the wrong hands!
- 👍 To the delicious hot chips at Thunderbolts Takeaway.
- 👍 To the great school holiday program. Lots of fun.
- 👍 To all the wonderful walking/riding tracks around the levee banks. I had a great time with my children when I returned home to Walcha for a holiday break.
- 👍 To shop workers that park outside other local stores all day.
- 👍 To farmers who leave out their stock signs when there is clearly no stock out.

Contributions will be received in person, by phone or email and must be accompanied by your name and contact details. They will be printed at the discretion of the editor.

Saddlery and leather goods at Walcha Rodeo

It's been more than four years since Rob and Narelle Dale left Walcha to live on Russell Island in Moreton Bay off Brisbane. Narelle, many would remember from Walcha Veterinary Supplies, while Rob worked for Branga Plains and Upton Pastoral.

Rob and Narelle will be at the Walcha Golden Gate Campdraft this Friday, Saturday, as well as Sunday morning, with a display of some of their leather goods. These include beautifully crafted saddles and bridles that they make in their island workshop.

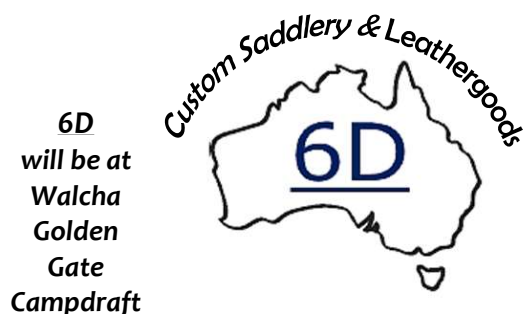
They are enjoying their life on Russell Island, which only has access by passenger ferry or vehicle barge to get to the mainland.

"Even though the island is part of Brisbane, its isolation makes it a tight, small community – similar to towns like Walcha" Narelle said.

Narelle and Rob would love to catch up with old friends in the short time they will be back in town, so pop to the showground and say hi.



6D Saddlery



Rob & Narelle Dale
www.6dleather.com.au
Facebook: 6dleather
sales@6dleather.com.au

WALCHA GOLDEN GATE CAMPDRAFT & RODEO

Bronc 'Wild Ride' – Bull Ride – Bullock Ride

This Saturday Night
6.30pm at Walcha Showground



THIS WEEKEND

FRIDAY 19 JANUARY (Free entry)

- Campdrafting all day
- BBQ and Bar in operation.

SATURDAY 20 JANUARY

- Gates open 4.30pm for Rodeo, action starts approx 7.00pm.

Cost: Family \$35, Adults \$15, Children 5/13yrs \$5, U5 free.

- Campdrafting all day
- BBQ, Bar and Entertainment.

SUNDAY 21 JANUARY (Free entry)

- Campdrafting and finals from lunch time.

WALCHA COUNCIL Summer HOLIDAY PROGRAM JANUARY 2024

FELT ART @ WALCHA LIBRARY

Learn how to make felted products
10am - 11.30am Ages 10+
Tuesday 16th Jan 2024
Call Walcha Library to book 67742550

THE SCIENCE OF MAGIC

The science behind some amazing
magic tricks and take home your own
'Pepper's Ghost' illusion Ages 9+
10.30 - 11.30am Thurs 18th Jan
Call Walcha Library to book 67742550

LEGO DAY OUT

Lego Masters Andrew and Damian have
a display and interactive workshop at
the Tamworth Country Music Festival.
Bus departs Walcha Library 9am &
returns 4pm,
Monday 22nd January 2024
Book online asap to secure
your seat!



BASKETBALL

Travis from Own the Rock Academy is
returning to Walcha MPC for his
basketball clinics this summer!
Tues 23rd Jan 2024
Call Walcha Library to book 67742550

CLAY EARRING WORKSHOP

Make your own clay earrings.
Open to all school aged children.
Walcha Tennis Club
From 2-4pm
Tuesday 23rd Jan
Cost: \$10
Book online now!



Celebrate summer at the Walcha Memorial Pools

Wed 24th Jan 2024 **FREE ENTRY!**

POOL PARTY

Fun for all ages & no booking needed!
Inflatable obstacle course 1-6pm
Music, games & prizes 2-5pm
Free sausage sizzle 5pm



Antique Machinery and Truck Show on next month

This 16 - 18 February will see the
town of Walcha come to life when
the Walcha Antique Machinery and
Truck Show (WAMATS) opens its
gates for the second year running,
but the first year run by local
machinery enthusiasts.

The gates will open to the public from
8.00am Saturday and Sunday, with
a program of events to be released
in the coming weeks for everyone
to access. The program will include
a parade through town starting at
10.00am from the Lions Park, runing
straight through town and turning at
John Stuarts Towing, then back to
the Showground.

We are pleased to announce we
will also host a performance by one
of our amazing local talents Ash
Barnett. Ash and her team of horses
will be putting on a liberty display,
showcasing the trust and connection that can be built between people
and animals.

Ash, the winner of the 2022 Equitana Liberty Championship held in
Melbourne, is proud to be performing in a home town show at WAMATS.
This is a display not to be missed!

A raffle will also be held over the event weekend, tickets will be available
to for purchase for \$2.00 each, with a list of prizes advertised closer to the
event prizes will be advertised closer to the date. As a new club we are
asking local businesses for their support with donations or sponsorship
of either raffle prizes or money to help run the show.

Last year we raised over \$6,000 for three chosen charities around
Walcha. We are hoping that this year we can raise a similar amount or
more to support our local charities to help the community.

If you have any questions or queries please don't hesitate to contact
Megan on 0419 188 534 or wamats@outlook.com



Ash Barnett with one of her
talented horses.

PETER BRAZEL HAY & SILAGE SALES



Silage Contracting

22 TON EXCAVATOR - 13 TON LOADER
15 TON VIBRATING ROLLER

Tipper

PASTURE SPRAYING

D3 DOZER - 45ft DROP DECK TRAILER



Peter 0427 013 133 or 6777 6534
Irwin 0408 311 321

Financial Services



- Rural and Commercial Finance
- Leasing
- Home Loans
- Insurance Premium Funding

Kel Penfold

6766 5309 : 0427 667 118

Exploration update from Nowendoc Minerals 2022 – 2023

The last 12 months has provided Nowendoc Minerals with plenty of news and here Paul Smith reports. Our eight exploration licences cover a total of area of 803 square kilometres, though exploration is only being carried out on land where landowners have agreed for us to do so. As background, Nowendoc Minerals is exploring for metals in the southern tip of the New England region – south of Walcha and inland from Taree and Port Macquarie. In particular, we are exploring for metals which are critical for modern technologies and the energy revolution. The region had a turbulent geological period from about 500 million years ago until about 200 million years ago. Mountain building processes caused giant slabs of the oceanic bed to be thrust beneath the east coast of Australia which resulted in the crust being driven up. Also, during this period, mantle-derived plumes of molten rock rose towards the surface, which caused enrichment of metals in rocks, earthquakes and volcanoes. Elsewhere in the world, those types of geological processes have produced mineral systems which contain many types of critical metals.

In the old days, prospectors explored the countryside and dug shafts in the hope of striking it rich. However, flooding of shafts as well as the physical hardship of working with little equipment in remote mountainous country, prevented the miners from going deeper than about 30 metres. Now, more than one hundred years later, we have been retracing the steps of old timers and searching for signs of mineralisation. Last year we collected 551 bags of rocks (about 1 kg each) which were assayed for a suite of 35 metals. Eight interesting prospects are developing and they are summarised in the table. (The locality of the prospect is not given, in order to protect landowner's privacy.)

The rocks in the photo are from prospect, M2. They are exciting because there is mineralisation in veins of grey quartz, with abundant small crystals of pyrite (dots of yellow iron sulphide), grey stibnite (dots of grey antimony sulphide) and arsenopyrite (dark crystals of iron arsenic sulphide). The odour of sulphurous compounds is quite strong and there are specks of visible gold.

Photo of NM0443: Rocks have small crystals in grey quartz with yellow-brown sulphurous layers.



Table showing a summary of mineral prospects being explored by Nowendoc Minerals.

Prospect	Key metals	Comments and description
GB 1	gold	Gold at 7g/ton to 0.5 g/ton over a strike of 300 metres. The prospect is possibly the top of an epithermal gold system.
PB 1	platinum and palladium	At 0.15 g/ton to 0.07 g/ton over a strike of 150 metres. The prospect is possibly a mineralised layer of a mantle-derived intrusion.
CC 1	copper	No access as yet, but old timers mined the site with copper levels of up to 20%.
BR 1	titanium, vanadium	Ti at 1.5%, V at 350 g/ton over a strike of 350 metres. The prospect is possibly the surface layer of a mantle-derived system.
OY1	copper	Copper at 912 g/ton, sulphur at 1.7%, (strike length is still to be determined). The prospect is possibly a mineralised shear-fault zone.
OY2	Titanium, vanadium	V at 500 g/ton, Ti at 1.5 %, and scandium at 50 g/ton, strike is still to be determined. The prospect is possibly a mineralised shear zone.
MJ 1	copper	No access as yet; in 1908 the mine inspector reported miners were getting up to 20 % from shafts in a shear-fault zone.
M1	lithium	In a recent find, weathered rocks had lithium at 250 g/ton over strike of 250 metres. The prospect is possibly a lithium-bearing dyke.
M2	gold	Quartz veins with abundant sulphur, pyrite, antimony and gold. Strike of over 250 metres - possibly orogenic gold.

MARKETS THIS SAT!!

Join us

**FOR AN ARRAY OF
SEASONAL PRODUCE,
FRESH COFFEE,
SWEETS & PASTRIES,
BACON & EGG ROLLS,
PLANTS AND TREES
PLUS MUCH MORE!!!**



GOT ANY EXTRA PRODUCE?*

**BRING ALONG YOUR
HOME-MADE CONDIMENTS,
BAKING, FRESH PRODUCE,
PLANTS, EGGS AND SO ON TO
THE COMMUNITY STALL WE CAN
SELL THEM ON YOUR BEHALF**

* SEE TERMS AND CONDITIONS ONLINE



NEW STALLHOLDERS WELCOME
WALCHAFARMERSMARKET.ORG.AU



At the 19th

Over two dozen players teed off last Sunday in a stroke medal round for a trophy supplied by A.J Cross and it was Club Captain Willy Brennan who won the event but only after he survived a three way countback with Lee and Lachie Fletcher after all three players carded 66 nett.

The overall winner also collected the A Grade mug after counting out Lee Fletcher, B Grade went to Lachie Fletcher while C Grade was won by Bill Fletcher.

A two over par 72 scored Lee Fletcher the scratch section of the event which also helped him defeat Doug McDonald 4 and 3 in Match Play and collect the first sweepstakes ball with 66 nett.

Just for good measure he also won the putting competition after engaging his flat stick on 21 occasions whereas the 'much sort after' pink shirt for most putts went to Bill Heazlett with 33 jabs.

The remaining sweepstakes went to Michael Stackman 69 Jenny Lisle and Allan Laurie both on 70.

Match Play Michael Stackman rounded up Crichton Barr 3 and 1.

Long drives sponsored by Tony 'Backhand Larry' Asmus were drilled by Andrew Crawford (A), Allan Laurie (B) and Bill Fletcher (C) while sharpest shooters at the pins were Allan Laurie (3) and Willy Brennan (16).

Last week only the second half of the report was publish so now we report it below.

Last Weeks At the 19th

The opening round of 2024 attracted 29 players last Sunday week where a stableford round was on offer played for a trophy donated by Barry Hoad.

Winner on the day was Will Nicholls after he accumulated 38 points but only after he survived a four way countback with Club Captain Willy Brennan, Jamie Bowden and Michael stackman who all carded 38 points also.

The remaining sweepstakes went to Andrew Crawford 37, Don Brooks 37, Simeon Cross 36, David Sweeney 35, Barry Hoad 35 and Margaret Davidson 34.

N.T.P on 3 went to David Sweeney.

The 2024 Match play championships commenced last Sunday where Willy Brennan defeated Alex Gill 1 up, Barry Hoad downed Owen Presnell 2 and 1, Simeon Cross rolled Mal Ballard 3 and 1, Andrew Crawford rounded up Ross King 3 and 2, Will Nicholls beat Mark Hogan 6 and 5, Bill Heazlett was too good for Col Berry 4 and 3 while Don Brooks got home 3 and 2 against Peter Berry.

On New Years Eve a stroke medal round was played for a trophy provided by Ross King where Col Berry was the overall winner after he registered a 71 nett which also entitled him to the B Grade mug.

A Grade went to Wayne Brennan on a countback with Charyl McDonald both on 74 nett whereas C Grade was taken out by Andrew Robertson on 73 nett.

Sweepstake prizes were collected by Don Brooks 72 Allan Laurie 72, Barry Hoad 73 and Cheryl McDonald 74 who also won the putting competition with 32. The coverted 'pink shirt' for most putts went to Julie Hoad after she engaged her flat stick on 33 occasions.

Long drives sponsored by Tony 'Backhanded Larry'. Asmus were smacked by Wayne Brennan (A), Jamie Bowden (B) and Julie Hoad (C).

Best Scratch score went to Wayne Brennan after he had 82 shots off the stick while the sharpest shooter at both the 3rd and 16th pins was 'Mollydooker' Allan Laurie.

Play on christmas Eve was abandoned due to wet weather.

Last Saturday Margaret Parsons racked up 17 points to win the weekly 9 hole competition just a point clear of

runner up Peter Whellan on 16. N.T.P on 3 to Jenny Lisle. The previous Saturday Peter Whellan won with 16 points, runner up was Col Higgins 14 while the NTP on 3 went to Peter Sendall.

Saturday the week before that John McLaren won with 14 points after he snuck home ahead of Mark Hogab on 13 points.

This Sunday is a stableford round.

Bowls

Dad's Army: Two games of triples and a game of pairs were played last Thursday afternoon.

In the first game of triples, Brian Goodwin, John Watts and Adam Hall were 17 - 13 winners over Gary Natty, Peter Hayes and Mark Hogan in the closest result of the day.

The Andrews family of Matt who played twice and Sari won the second game 17 - 10 against Barry Kliendest, John Mc Lean and Geoff Salt.

In the pairs, Noel Goodwin and Warwick Hogan had an easy 15 - 7 win over Eric O'Keefe and John McCormack. Noel and Warwick won the chooks and the three winners of the raffle after Warwick donated his back were Garth Clare, George Lawrence and Brian Goodwin.

Twilight: The usual fourteen teams have nominated for this competition where most were surprised that the committee have decided to play on the top green. During the comp we will be playing week about with the top green and the carpet.

Playing on the grass seen several upsets and close calls as the game between "The Champs" and Team 7.

Pennants: Players are again reminded noms are now open, and all interested players to put their name on the sheet on the notice board.

Tennis

The 2024 Summer Comp kicks off Tuesday 6 February at 7.00pm. Nominations to Hyde 0427 780 391, Trev 0459 799 119 or post on the Tennis Club Facebook page. Nominations close on Friday 26 January. The format will be four-a-side, graded doubles and there will be eight weeks of ordinary rounds with the final to be played on Tuesday 9 April. Get in quick to secure a spot. The next Club meeting will be held on Monday 13 February at 6.30pm. Happy New Year and see you all at the net soon.

Ladies Bowls

Ladies Bowls will resume this Thursday 18 January after the Christmas and New Year break. The starting time is 9.00am for 9.30am.

Cricket

Walcha/Uralla v East Green 3rd Grade

Walcha/Uralla

H WILLIAMS c M Harris b V Simpson	0
N SWAN c b V Simpson	2
D MORLEY n.o.....	27
B JEX b B Moran.....	0
M TASIX b B Moran	0
P MOONEY c M Moran	4
B USSHER b M Harris	5
C WATTS b M Harris.....	2
C MOONEY c G Swilks b B Moran	3
A KEENE c M Moran b B Moran	3
H USSHER s K Davis b M Moran	1
Total 59. Extras 13. Bowling (overs/maidens/runs/wkts)	

V Simpson 3-1-2-4, B Moran 4-1-4-2, M Moran 4-0-2-16, M Harris 1-0-2-7, C Green 3-0-0-12, J Simpson 1-0-0-11.

East Green

M KELLY c M Tasik b C Mooney	8
M HARRIS c P Mooney b A Keene	24
M MORAN c B Jex b P Mooney.....	6
K DAVIES c B Jex b P Mooney	0
G SWILKS b C Watts	11
C GREEN b A Keene	9
N MILLER b C Watts	7
B MORAN n.o.....	9
S KILLEN b M Tasik	3
V SIMPSON lbw H Ussher	2
J SIMPSON lbw H Ussher.....	1
Total 86. Extras 6. Bowling (overs/maidens/runs/wkts)	
C Mooney 3-0-1-19, P Mooney 3-0-2-12, C Watts 4-0-2-25, A Keene 3-0-2-14, H Ussher 2-3-0-2-10, M Tasik 2-1-1-6.	

Walcha/Uralla v Easts 2nd Grade

Walcha/Uralla

D BOYD c A Starr b Savi.....	71
N ENDACOTT b Savi.....	13
J GRILLLS b Swilks	10
J WEARNE n.o.....	42
E BLOMFIELD b Starr	6
J SHERRIN b Starr	4
B MOORE n.o	7
B MANSFIELD c E Relf b Starr	12
Total 182. Extras 21. Bowling (overs/maidens/runs/wkts)	
M Foster 4-0-0-22, E Relf 2-0-0-23, Savi 4-0-2-35, B Swilks 3-0-1-36, A Starr 4-0-3-29, C Foster 3-0-0-33.	

Easts

J SIMPSON b Fletcher.....	7
Savi r.o J Grills	0
H EICHORN lbw M Harper	2
C FOSTER c E Blomfield b J Sherrin.....	1
C MORAN c E Bloomfield b J Sherrin.....	17
R SIMPSON c C Boyd b M Harper	29
E RELF c Fletcher b C Boyd.....	9
B SWILKS b Harper	7
M FOSTER b Fletcher	6
A STARR n.o	0
W GREEN n.o.....	1
Total 90. Extras 11. Bowling (overs/maidens/runs/wkts)	
M Harper 4-0-3-17, L Fletcher 4-1-2-17, J Grills 2-0-0-3, J Sherrin 2-0-2-13, C Boyd 2-0-1-10, J Vealine 2-0-0-15, E Blomfield 2-0-0-8, D Boyd 2-1-0-6.	

This Saturday Walcha/Uralla play Guyra in both second and third grade at Rologas Oval no 1 in armidale.

THE APSLEY
Advocate

Deadlines

Advertising & Sport
Mondays 4.30pm

Book your Ad's early
to avoid disappointment



Read with interest The Commercial Hotel specials Menu lists Garlic Prawns are available at \$23.50. It then goes on to mention the beautiful King Prawns are locally sourced, cooked in a creamy garlic sauce, served on a bed of rice. Don't know which local waterway the prawns are sourced, but no doubt publican Kristian Schmidt will be able to enlighten you where they are from.

...

Heard a bit of whisper former Walcha plumber and Golf Club life member Neil Dark has had a bit of trouble negotiating a small speed hump near his new abode at the Lakewood Retirement Resort, midway between Kew and Laurieton. Details are a bit sketchy, but apparently the incident took place while he was out on one of his fitness power walks – which included a roll over manoeuvre when he came unstuck on the speed hump, then springing to his feet before anyone saw him. The good news is Neil is well on the road to a full recovery.

...

The Newie 777's Competition went off last Saturday after Vagrant won at Fleminton, King of Sparta saluted at the Gold Coast and then Naval College was first to greet the judge at Rosehill all in Race 7 at their respective venues. And wasn't Canterbury Hush Puppies tragic Bradden Jackson a happy chappy as he collected his \$305 – he'd picked the correct numbers 12, 3 and 12. It's on again this Saturday where punters are invited to select the winners of race 7 in Brisbane, Sydney and Melbourne at the princely price of \$2. The jackpot recommences at just over \$50 this Saturday.

...

Walcha Rugby League have decided to spilt with Uralla and attempt to go it alone in 2024. According to Club Secretary Emma Hillier, at least 13 players have indicated they wanted to play with the Roos this season, while another 6 to 8 players are at the 'maybe' stage. Both men and women players are needed and if you are interested in having a run please contact President Barry Partridge or Emma. Training commences next Tuesday 23 January at John Oxley Sportsground from 6.30pm.

...

The first Group 19 round of games is scheduled for 6 April, which won't take long to get around to. Anyone interested in doing volunteer work for the club, including completing a referee course or sideline official sports trainer, please contact Barry or Emma.

Walcha/Uralla Cricketer Daniel Boyd (Danny Boy) scored his 500th run of the season last Saturday. He clobbered 71 runs against Easts at Peter Fenwicke Oval during his eleven over stay at the batting crease. So far this season Daniel has registered three unconquered centuries and averages 71.57 runs every time he goes out to bat. Keep up the good work Daniel.

...

No doubt 2013/2014 Walcha Cricketer of the Year Jay Grills, who has five ducks to his name this season, four in succession, would have his heart in his mouth before he got off the mark last Saturday. He hit the ball directly to a fielder on the boundary! Luckily for Jay the ball ricocheted through the fielders hands and over the fence for six runs. If that hadn't happened he would have joined Johnny Cotterill (1980), Trevor Watson (1990), Ben Cross (2015) and Liam Brennan (2016) in the six ducks in a season since 1979/80.

...

Some of the Veteran Cricketers who were in town for the mini carnival scheduled for the past two days, enjoyed a BBQ dinner at the Newie on Monday evening. Teams from Port Jackson, Hunter Taveners, Mid North Coast and New England will battle it out on both Peter Fenwicke Oval and John Oxley Sportsground.

...

It was great to catch up with several players I have either played with or against over the years – Barry Everingham, Brian Holstien, Dale 'Fox' Brazel and the Golden Haired Wonder child Stevie Sweeney, to exchange a few yarns and also sample a couple (or five) frothy ones.

...

Anyone who thought last weeks 'At the Nineteenth' golf report, including captain Willy Brennan, didn't make sense especially the start of it should know that only the second page of the two page report was published. Hopefully if there is enough space that will be rectified today.

...

Last reminder about the Walcha Holiday Basketball Clinic run by Travis Fisher is being held at Walcha Central School next Tuesday 23 January from 10.00am. Thanks to sponsorship from the Walcha Council, the cost is just \$30 per player. Fees can be paid online or cash on the day.

telecottage

WALCHA

Design, print and secretarial services

- Photocopying
- Laminating
- Business Cards
- Stationery
- Invoice/receipt books
- Labels
- Sale Catalogues
- Brochures
- Resumes
- Cards
- Stamps
- and more.

Phone 6777 1111

wtc@walchatelecottage.com.au



Positions Vacant

Little Kindy currently looking for a Certificate III or higher with a possibility of becoming a room leader. Needs to be flexible with working hours and must have current first aid and working with children check. Please email resumes to:
walcha@littlekindy.com.au

Walcha Council New Casual Employment Information Session



If you are looking for a position with Council, and one of our currently advertised vacancies doesn't suit you, come along and learn about Casual positions with Council.

- WHEN Monday January 22nd at 10AM
- WHERE Council Chambers 2W Hamilton Street Walcha

We have positions available in a number of our Infrastructure areas, including Roads, Urban, Cleaning & more. Team Leaders & Coordinators will be there so you can find out exactly what working with Council would be like. Casual positions can be a great pathway into a rewarding career in local government.

For more information contact Mike Lockie on 02 6774 2500 or hr@walcha.nsw.gov.au

Phil Hood, General Manager

Walcha Council, PO Box 2, Walcha NSW

Public Notice

Walcha Courses

New England Community College

- **Prepare** to work safely in the construction industry – White Card – Monday 29th January 2024
- **Provide** Responsible Service of Alcohol (RSA) – Tuesday 30th January 2024
- **Provide** Responsible Gambling Services (RCG) – Wednesday 31st January 2024

Course will be held at Walcha Vets Supplies, 6 Aberbaldie Rd, Walcha NSW 2354

For any inquiries please contact the Guyra Office on (02) 6779 2132, admin@gala.org.au

Walcha Tennis Summer Comp starts Tues 6th Feb. Nominations to Hyde 0427 780 391, Trev 0459 799 119 or post on the Tennis Club Facebook page. Noms close Fri 26 January.

Walcha Squash Club. Next Comp Tues 6 February. Four or five grades depending on numbers. All abilities welcome. Comp runs for 10 weeks – Term One. Text or call James on 0427 049 378 if you are keen to play.

Public Notice *cont*

Walcha Australia Day 2024

- McHattan Park 26 January 2024
- 7:30am – Breakfast in the Park - \$8 per head or \$25 per family.
- 9:00am – Ceremony begins with raising of the Australian flag, Bush Poet Gordon Edmonds and address by our Australia Day Ambassador, Nicholas Gleeson.



Nicholas is an Adventurer / Motivational Speaker / Athletics Paralympian and is proud to be an Australia Day Ambassador for Walcha and join our community celebrations.

Walsh Street will be closed during Australia Day festivities.

Phil Hood, General Manager

Walcha Council, PO Box 2, Walcha NSW

PRESCHOOL ORIENTATION DAY



All families who have children enrolled in preschool for 2024 (or are thinking about it) are invited to attend the orientation day on Saturday 20th January 2024 from 10am-12pm at the Preschool.

This day is to introduce your child to the preschool environment, and to give them an opportunity to explore and settle in with you there. Many of the preschool staff will be there so come along and meet our educators and have a look around at our preschool. This is also a great opportunity to ask any questions that you may have.

Enrolments are now open and can be completed online by going to: <https://walcha.nsw.gov.au/community/children-young-people/walcha-preschool/>

Paper enrolment forms are available at the preschool during normal opening hours. Children need to be three to attend preschool. Enrolments will be taken and places held for children turning three before 31st July 2024. Children turning three after this date will be able to attend if vacancies exist, but places will not be held for them. Council will be answering any questions you may have, and providing information about fees, subsidies, bus days, extended hours and the preschool program that is based on the Early Years Learning Framework. For enquiries please call Alice on 02 6777 2117 or Walcha Council on 02 6774 2500.

Phil Hood, General Manager

Walcha Council, PO Box 2, Walcha NSW

Zenziwear Wet Felting Workshop, 20/01/24 from 10:30am. Ph 0473 878 560 to book.

Public Notice *cont*

Walcha Council 2024 Street Stalls



Applications, IN WRITING, are invited from local organisations for the allotment of dates for STREET STALLS, FETES, MARKETS and the like on FRIDAYS & SATURDAYS ONLY, in 2024.

By Council Policy, each organisation is limited to two (2) Street Stalls per year, to be held only in the street stall shelter, provided that where a surplus of dates is available they may be allocated at the discretion of the General Manager.

Applications are to state SPECIFIC DATES and to give ALTERNATE DATES where possible. However, organisations should be aware that dates are allocated in order of receipt of applications.

Organisations are also requested to provide the names and contact details of current Executives of their organisations so that a current register can be kept at the Council for quick community use.

Phil Hood, General Manager

Walcha Council, PO Box 2, Walcha NSW

FARRIER Stuart McDonnell back servicing the Walcha area. Also provides equine massage service. Call 0432 494 678.

Meetings

Walcha Support Group, 25 January from 1.00pm. Community Care Rooms, Middle Street. All Welcome.

Jockey Club Committee Meeting Tuesday 23 January 2024 at 7.30pm. Apologies to Secretary 0428 772 307. Reminder Working Bee 4 February 2024.

For Sale

Shoreline Oysters at Farmers Markets this Saturday 20 January. Ph 0447 520 604.

Thank you

The family of the late Marjorie Blanch, beloved wife and mother, wish to convey our sincere thanks for your kind expressions of sympathy in our recent sorrow. To the staff at the Walcha Hospital and Community Care Services, please accept this as our personal thanks for your care of Marj.



WALCHA LAW
SOLICITORS

Sophie Thomson | James Levingston

Conveyancing | Power of Attorneys
Wills | Estates | Traffic Offences

Local Firm - over 70yrs in the Community

02 6777 2066 info@walchalaw.com.au
walchalaw.com.au

INCORPORATING PATTERSON BYFIELD & BRYEN

Nick Moore

PLUMBING & EXCAVATION SERVICES

WALCHA & SURROUNDING AREAS



Highly qualified and experienced plumber
All aspects of Plumbing and Gas Fitting
Wood heater installation
Roofing and Guttering
Gold License No 59555C

Nick 0418 691 306

nickmoore203@yahoo.com.au
Katy 0422 034 660



CURTIS

MOWERS & SMALL ENGINES

- Mowers • Ride-ons
- Pumps • Chainsaws
- Whipper snippers
- Chain sharpening
- Bar dressing

ALL TYPES

SELLING New 30 & 40 Tonne Petrol Hydraulic
WOOD SPLITTERS

- Chainsaw chain • Pumps & Generators •

JAMES – 0488 020 762 (7 Days)



CPC SPRAYING SERVICES

- Boom and Reel Spraying
- GPS Fitted 4WD Small Truck

Phone Peter 0404 471 105

New England IT

**ONSITE COMPUTER
SERVICE + SALES**

Tim Sutton 0414 874 523

A G W

RURAL CONTRACTING

GPS Equipped boom spraying

Andrew Wauch 0427 549 748

**MOBILE-FIX
AUTO+AIR**

Mobile Repairer &
Airconditioning Specialist

Licensed Vehicle Repairer
Lic.No.46696 RTA Lic.No. AU22616

PATRICK STACE – WALCHA
Mob. 0428 780 077 Ph. 6778 0595



**STORAGE CENTRE
WALCHA**

20' Containers available for rent \$35 pw + GST
Secure Undercover parking for cars,
vans etc \$15 pw +GST

ANGUS 0427 787 332

THE APSLEY
Advocate

Advertise here!

Like to advertise on our Trade Page?
Small box ad 30mm h x 63mm w \$30.00 p/wk
Large 54mm h x 63mm w \$40.00 p/wk

Call us today on 6777 1111

SELF STORAGE

NORTH STREET – WALCHA

**VARIOUS SIZED SHEDS
SECURITY FENCED**

67773899 0428 653 307

Tree lopping
Tree removal
Truck & chipper
Bobcat
Post hole digger
Trencher
Woolshed cleaning
Stockyard cleaning



Scott Kermode
0427 100 889

TREETOP
services

treetopservices@bigpond.com

CHIROPRACTOR

K Samantha Goor

B.Sc. Anatomy (NSW) M Chiroprac (Macq)

Tuesday & Friday from 9.00am

6777 1340



Andrew: 0427 549 748

Toni: 0421 972 354

church notices



ANGLICAN

Holy Communion and Family Service
10.00am

Phone 6777 2543 or email:
walchaanglican@gmail.com

PRESBYTERIAN

Walcha sunday 9.30am
All welcome. Phone 6777 2539.

CATHOLIC

Sunday Mass 10.00am

DISCLAIMER LETTERS TO THE EDITOR are submitted on the condition that The Walcha Telecottage as the publisher of The Apsley Advocate may edit and has the right to, and license third parties to reproduce in electronic form and communicate these letters. They are published at the discretion of the Editor and Board. The Apsley Advocate is printed by The Walcha Telecottage, PO Box 116 Walcha NSW 2354. Phone 6777 1111 Fax 6777 1112. The Walcha Technology Co Operative Limited, the Editor and Staff of this Newspaper have published any article here-in in good faith and bear no responsibility in respect to the accuracy of the information contained in such article. Any person or persons publishing material in this Newspaper do so in the knowledge that they shall personally accept any responsibility for the accuracy and other correctness of such articles and also accept full responsibility for the legal consequences if it be found that the article contains any inaccuracies in the contents of any such articles. **DEADLINE MONDAY 4.30PM** Editor: Anthea Macpherson. Advertising and Sport: Rosalie Gibson, Megan Scrivener, Emily Scrivener and Joscisca Matapakia.

Marchant

BROS. LTD. Est. 2000

WATER CARTING

DELIVERING
7 DAYS
A WEEK

WALCHA COUNCIL
CERTIFIED DOMESTIC
WATER CARTER
10,000 litre tank



A FULL RANGE OF AFFORDABLE TRANSPORT & EARTHMOVING
Dam construction/maintenance, stick raking, road building,
site prep, pipe laying and all timber work.

Check out our website for the full range of machinery,
attachments and services available

FIREWOOD AVAILABLE

Earthmoving and Heavy Haulage Transport
Jason 0427 490 487

02 6777 2024 marchantbros@bigpond.com
www.marchantbros.com.au

BOWLING & RECREATION CLUB

Mon – Wed 4.00pm – Close

Thursday 18 12.00pm – Close

Ladies bowls recommence 18
January

Friday 19 2.00pm – Close

2.00pm Bingo

6.00pm Bistro

- Homemade lasagna
- Beer battered basa
- Teriyaki chicken and grilled pineapple salad
- Normal menu available, takeaway and delicious desserts.

6.00pm Free Bingo

6.00pm Tickets for raffles

MEAT & VEG TRAYS

8.00pm Raffles & Members Draw

Saturday 20 11.00am – Close

6.00pm Bistro

Sunday 21 11.00am – Close

12.00pm Bistro open. Children
U/10 kids meal free with an adult
order.

12.00pm Meat, fruit and veg
raffles. Drawn at 1pm

12-2pm \$5 schooners

Open as normal
Australia Day
Raffles and thong
decorating competition

Social Bowls
Thursdays
Names in by 12:30
for 1pm start

MEMBERS
DRAW
\$50

YOU MUST BE A MEMBER FOR
2023/2024 TO BE ELIGIBLE TO WIN

POKER THIS
SATURDAY 3PM

Do you live in Walcha Shire? If so you MUST be a member to enter the Club
Social Membership \$15 – Full Membership \$105. PHONE 6777 2077

FOR ALL YOUR EARTHWORKS
TRANSPORT AND ELECTRICAL NEEDS

ALL ASPECTS OF RURAL, COMMERCIAL & CIVIL WORKS



- Freight & Transport • Machinery Float • Stick Raking
- Road construction and maintenance • Trenching
- General Earthworks • Drilling • Mulching
- Dam maintenance and construction
- Erosion Control • Site Preparation • Electrical Works

Ian Notley 04188 29188 • Mark Notley 0422 637 686

www.eteservices.com.au



Wayne Hoy: 0427 281 060
Matthew Hoy: 0427 322 640
Aaron Bullen: 0409 776 340

**SPRAYING
SOWING**

**EXCAVATING
EARTHMOVING**

GPS & Auto Steer Equipped

- Komatsu PC300 Excavator
- Cat 324 Excavator
- Cat D6N Dozer
- 2000ltr Quikspray Trailers
- Casotti's
- 4 x4 Tip Truck
- 4x4 Trucks & Boomsprays
Full auto Rate Control
GPS & Autosteer
- 4x4 Tractors GPS Equipped
20 & 24 disc Williams Seeders
- Fencing & Rural Contracting