

THE APSLEY Advocate

CIRCULATION 1920 – P 02 6777 1111 F 02 6777 1112 wtc@walchatelecottage.com.au walchatelecottage.com.au

10 January 2024

Mother and daughter team up for their largest ever exhibition

The result of two years work by local artists Julia Griffin and her daughter Gemma King is currently on exhibition at Tamworth Regional Gallery. Titled, *Land and Sky* the exhibition features 50 works which is the largest exhibition Julia and Gemma have ever undertaken.

"We were invited two years ago to hold a mother/daughter exhibition and it has been a labour of love to create this work," Julia said.

Julia created 26 stunning landscape paintings for *Land and Sky*, commenting that the paintings are a response to the country which she has lived in for 40 years on their family farm in Walcha. "At the centre of my reason to paint is wanting to record a moment in time when the elements of light, shadow and the structure within the landscape were held together in a moment of beauty, sometimes humble and unassuming, other times of high drama, desperate drought, stormy weather and in some cases the same view at different times."

Gemma's works focus on making one-off reduction linocuts with 24 pieces currently hanging in the Tamworth Gallery. "I have continued this relatively personal style of printmaking for this body of work, whilst concentrating on improving my printmaking techniques, mark-making, ink application and colour use," Gemma said.

"It is a very special opportunity for the two of us to have this mother and daughter exhibition," Julia commented. "Having such intimate access to each others process is unusual amongst artists; it calls for constant critique and assessment".

The exhibition runs through until 4 February at 466 Peel Street Tamworth. Tamworth Regional Gallery is open from 10am to 5pm Tuesday to Friday and 10am to 4pm on weekends with free admission.



Two of the works featuring in 'Land and Sky' at Tamworth Regional Gallery.
Top: *Clouds Gather over Fenwicks in Spectrum* (Gemma King); Above: *East Kunderang* (Julia Griffin).


SALWAY
MATERNAL COMPOSITES

OPEN DAY

18 JANUARY
10am to 12pm
On Property

SALE 25 JAN
Online only at
 **AuctionsPlus**
www.salway.com.au

Rob Mulligan 0427 773 914
Matt Larkings 0427 002 427
Miles Archdale 0428 660 326
Simon Newton 0467 660 320

Nutrien
Boulton's



Elders Walcha Upcoming RAM SALES!

- Shalimar Merino Ram Sale
24th January
- Nerstane Merino Ram Sale
26th January
- Yalgoo Merino Sale
27th January
- Lorelmo Merino Ram Sale
5th February
- Chain o Ponds and Old Woombi
6th February
- Clovernook Merino Ram Sale
8th February
- British Breeds Ram Sale
14th February

CONTACT:
Thomas Henry: 0409 659 877
James Sharpe: 0409 272 490
Allan Laurie: 0455 821 394
The Office: (02) 6774 2600

We hope to see you there!



For all your water needs contact WVS today



Troughs, pipe, polypipe, fittings, pumps and tanks.

For sales and orders talk to Jason today.


WVS
WALCHA VETERINARY SUPPLIES

Call 6777 2588 6 Aberbaldie Road, Walcha www.wvs.com.au



OK EARTHMOVING

Specialising in road construction & maintenance

• Stickraking • Dam building • Erosion works



Bulldozers • Excavator • Tip-truck • Vibrating Roller

PH 6777 7430 FAX 6777 7448

PETER O'KEEFE: 0429 944 821



New England Merino Field Day

Uralla Showground

Friday 12th Jan 2024

9am-4pm

On-property Ram Sale - 36 rams

1pm Thursday 8th Feb 2024

Inspections from 10.30am

Todd Whillock 0427 740 283

clovernook@antmail.com.au

1049 Campfire Rd Woolbrook NSW



**SHALIMAR PARK
MERINO STUD**

24th Annual On Property **RAM SALE**

FIELD DAY - Friday 11th January - Uralla Showground

OPEN DAY - Saturday 12th January 9am-3pm

'Shalimar' 619 Bergen Road Walcha
Wednesday 24th January 2024

**55 BIG FRAMED
SUPERFINE & FINEWOOL RAMS**
(including 30 Poll Rams)

OJD-MN3 Accredited. Bruceilosis Free & Footrot free

Inspection 10.00am – Sale 1.00pm (EDST)
Interfaced with Auctions Plus

Contacts: Des and Jane Carlon 0427 787 339

Jack Carlon 0428 268 865

www.shalimarpark-merinostud.com.au



SALWAY
MATERNAL COMPOSITES

RAM SALE **25 JANUARY 2024**

Online only at  **AuctionsPlus**

Contact Salway:
Rob & Anna Mulligan
02 6777 3914 or
0427 773 914

Nutrien Boulton's Walcha:
Miles Archdale 0428 660 326
Matt Larkings 0427 002 427
Simon Newton 0467 660 320



Nutrien
Boulton's

www.salway.com.au

New England Merino Field Days on this week



Todd Whillock,
Clovernook Poll
Merinos, President
NEMFD

The 2024 New England Merino Field Days (NEMFD) is being held this Friday 12 January at the Uralla Showground. This year there is an exciting change in format, with 18 member studs showcasing in one location. On Saturday 13 January attendees can take the opportunity to delve deeper into on-property displays at Alfoxton, Maisters Swamp, Mirani, Nerstane, Shalimar, Westvale and Yalgoo.

Collectively, our members studs feel that our new format will bring many benefits to both guests and exhibitors. We are hoping this format allows you, our guests, more time to have to good look at the diversity and quality on display by our member studs, and a relaxed atmosphere to, of course, talk sheep! We hope you leave full of information and enthusiasm for the year to come, which no doubt promises to be a good one for Merinos.

The two years since our last field day have certainly presented some contrasting environmental and market conditions to operate in. The slope was steep to say the least, from record livestock commodity prices and excellent seasonal conditions, to some of the poorest livestock markets seen in many years and quite an extended dry period. The perfect storm seemed to arrive with many factors contributing to the decline.

Despite this, Merino wool has remained quite resilient. Yes, we would like to see prices a little stronger, however, given the uncertainty in global economies, I think Merino wool has been a shining light and has continued to pay the bills for many of us. Medium and long-term market signals for both wool and meat markets look promising, which positions the ever consistently profitable self-replacing Merino enterprise in good stead going forward.

This event comes together through a wonderful collective effort by our committee members. I thank them all, in particular Janet Carter our Secretary, who is the glue and driving force behind it all.

Thank you to our fantastic sponsors. Your contributions assist us greatly in making our event successful and sustainable. Thank you also to our trade displays and dog demonstration. Trade displays are an area of the field day that we are looking to continue to expand to provide more points of interest for our guests.

The genetics our member studs offer are unique, diverse, highly profitable and you can be assured that they are truly tested in an environment that puts enormous pressure on wool quality and animal resilience. I have no doubt that there are genetic options in the New England to take any Merino enterprise forward, regardless of their breeding objectives.

We hope you enjoy taking the time to explore what we have to offer!

Todd Whillock

President, New England Merino Field Days



Images from the 2022 NEMFD.



Stock and Property Watch

www.nutrienharcourts.com.au

FOR SALE BY AUCTION - 'Ellandonan'

One Family Ownership for more than 100 Years

Approx 551.6 ha / 1363 ac

- Very attractive undulating breeding / fattening country N/E Walcha
- Excellent location with elevation and rainfall
- Good quality trap country with basalt outcrops ideal for pasture improvement
- Watered by approx. 30 spring fed dams and seasonal creeks
- Rainfall around 900 mm pa ave
- Three bedroom W/B home, large steel framed machinery shed, three stand wool shed
- steel sheep yards, timber and steel cattle yards
- Huge potential "off farm" income through the proposed Winterbourne Wind project

This is an outstanding property from so many perspectives

Auction: 22nd February 2024

at 11am Walcha Sports Club

Inspections strictly by appointment only with selling agents

NUTRIEN BOULTON'S

(02) 6777 2044

Bruce Rutherford 0428 660 328



**THIS
FRIDAY
12 JANUARY**

165

**Angus Heifers
A/I to High
Marbling
Wagyu Bulls**

Contact:

Miles Archdale

0428 660 326



45ft flat top • 45ft single deck cattle float • 26mtr B Double
19mtr mini B Double • Low Loader available for hire



BRIAN
Smith
TIMBER
TRANSPORT

Call us for
your large
Transport
needs

WALCHA
02 67772126

Bonnie Smith 0429 772 077
Brian Smith 0427 780 216

Join in for a fun Bingo Fundraiser night

It's been a long time coming, but now the Bingo Fundraiser for the Walcha Support Group is only ten more sleeps away. To be held on Saturday 20 January at Walcha Bowling Club, the fundraiser will be 6.00pm for 6:30pm start. Bingo books will cost \$20 (\$10 half book), and jackpot game sheets are only \$1.00 each. There will also be a raffle on the night, with tickets available for purchase now at the club for \$1.00 each.

There are well over 100 prizes on offer for men, women and children. Prizes for the kitchen, garden or bathroom, clothing, alcohol (for over 18s only), toys, groceries and numerous vouchers ranging in value from \$20 – \$350! Prizes have been donated by individuals and businesses from Walcha, Uralla, Armidale and Tamworth. I have had such a fantastic response from businesses that I have approached and individuals have offered things without being asked. Thank you all.

Di and Cheryl will have the Bistro open from 5:30pm and will be putting on grazing plates for \$10/head. Please come along early and support them as well. At intermission, supper will be provided for a gold coin (or better) donation.

I am also holding a Scavenger Hunt and you can get a list of items required when you buy your bingo book. If you don't have an item on the list, you can purchase one from me for a small donation. The first person to collect all the items wins a prize.

Come along and enjoy a great night with lots of fun and laughter. Bring your family, friends, neighbours and anyone else you can think might enjoy a night out to support a very worthwhile local charity. Never played before? Don't worry as there will be plenty of 'professional' Bingo players willing to help.

Hope to see you there – Suzie Harrison

Walcha a caring town

Walcha what a special town and special people who live here.

Philip 'Paddles' Roy Chandler was born, lived and died in Walcha. The outpouring of grief, love and support from this little community has been beyond belief. The morning of Philip's service for our daughter, Tash, to walk into Cafe Graze and to see all the staff wearing those 'bright shirts' was so heart warming for her and also for us to hear.

A thank you to his wonderful Doctor, Alison Jones, who laughed and cried with us and was so much a part of us coping with his situation. We are all so lucky to live in this town.

Olive Chandler

PETER BRAZEL

HAY & SILAGE SALES



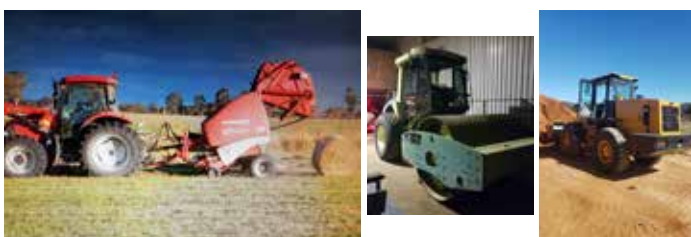
Silage Contracting

22 TON EXCAVATOR - 13 TON LOADER
15 TON VIBRATING ROLLER

Tipper

PASTURE SPRAYING

D3 DOZER - 45ft DROP DECK TRAILER



Peter 0427 013 133 or 6777 6534
Irwin 0408 311 321

thumbs



- 👏 Congratulations to Walcha Golf Club for a beautifully presented course and claiming the World Championships this year.
- 👏 To Alex and Emily for the wonderful music they provided at the Niangala Carols. We may have only been a tiny crowd but your lively music filled the Hall and we all thoroughly enjoyed ourselves. As one youngster said, "Now it feels like Christmas".
- 🙏 To the Council office for being closed in the first week of January. Despite paying more rates, we are receiving less service.
- 🙏 To the person who stole or 'borrowed' the cricket bat supplied for fun at the Ingleba Christmas tree. Please return it so it can be used for future gatherings.
- 🙏 To the person who borrowed a silver flower vase from a headstone at the Catholic Cemetry. Please respectfully return it to its rightful place.

Contributions will be received in person, by phone or email and must be accompanied by your name and contact details. They will be printed at the discretion of the editor.



Now the festive season is over, well to a certain degree, and this is the first column of the year may I take this opportunity to wish everyone a happy, healthy 2024 which goes just the way you want it to.

...

Just before Christmas Rugby League legend Greg Inglis conducted a skills and drills clinic at Peter Fenwicke Oval where a good number of youngsters turned up despite less than favourable weather conditions. From there it was on to the Bowling Club where he shared his story and spoke on Mental Health issues, something he has experienced himself.

...

One interesting thing G.I. mentioned during his talk was that he would never have left the Melbourne Storm had there not been the Salary Cap problems which forced him out of the club. He still believes the Storm are the best run organisation in the NRL.

...

Also in attendance was Australian PM x 111 winger Jakiya Whitfeld who played for the West Tigers in 2023 after switching from the Knights in the NRL Womens Premiership. The talented Jakiya has also represented her country at Rugby Sevens, but sadly missed out on the Tokyo Olympics after injuring her ACL. Jakiya spoke well and answered questions from the audience. The NRL Dally M Winger of the Year has signed with the North Queensland Cowboys for 2024.

...

Don't forget the Walcha holiday basketball clinic will be held at Walcha Central School Tuesday 23 January from 10am by Travis Fisher. The cost is \$30 per child, which is a lot less than last year thanks to the Walcha Council for sponsorship. Fees can be paid online or cash on the day.

...

Just before Christmas plenty of people attended a fundraiser raffle evening at the New England Hotel for the late Philip 'Paddles' Chandler. His wife Olive thanked everyone in attendance for their support mentioning that the love and warmth radiated at the Newie that night won't be forgotten.

...

Newie publican Peter Berry hit dirt when prizes were drawn and he won the chainsaw! Anyone who knows Perc would be aware he also runs a Timber Training company and didn't need another saw, especially this one – a toy saw, so he donated it back. Not that it worried Jayne Dunn much, she won the redraw.

...

After a couple of weeks break the Newie 777's and Punters Club resume this Saturday. The 777's jackpot currently sits at over \$300 where tipsters are required to select the winner of Race 7 in Brisbane, Sydney and Melbourne each Saturday. If no one is clever enough to pick the three winners the pool jackpots.

...

Round 4 of the Armidale & District T20 Cricket comp is scheduled for this Saturday at Peter Fenwicke Oval. Commencing at 12:45pm Walcha/Uralla 3rd Grade take on Easts Green, followed by 2nd Grade where the homeside do battle with Easts. Best of luck to both teams.

...

Still on cricket, a four team Veterans mini carnival is being held in Walcha next week. Sides from Port Jackson, Hunter Taveners, Mid North Coast and New England are drawn to play on Tuesday and Wednesday. Both turf wickets at Peter Fenwicke Oval and John Oxley Sportsground will be in action, with play scheduled to begin at 10am both days.

...

A welcoming BBQ has been organised for the players at New England Hotel on Monday from 6.00pm, followed by a dinner at the Commercial Hotel on Tuesday, also from 6pm, with Gordon Edmonds the guest speaker. Lunch is being provided at the Bowling Club both days. It wouldn't be a surprise to see players like Steph Sweeney and Brian Holstien return to town for the competition. Hopefully the weather will be kind to the organisers.

Ingleba Hall Grand Opening

~ JOIN US ON SATURDAY 3 FEBRUARY ~

After a few years of drought, bushfires, a mini tornado and COVID, the renovations at the Ingleba Hall are complete. The Hall has a brand new kitchen, indoor toilets and shower and a barbecue area. The building has new windows and doors, and is now fully lined with a new ceiling. New stairs have been installed inside and out as well as an access ramp. There is also a fantastic new wood heater in place which will make winter get-togethers a little bit more bearable.

Most of the work has been done by volunteers. Funding for the renovations was made possible by a Trivia Night a few years ago and State Government grants. Thank you to Walcha Council for their valuable assistance in applying for those grants.

Thanks to local tradies, particularly to John Wark who spent a great deal of his time submitting plans and once approved doing most of the work himself during lockdowns – he has done a fantastic job. Thanks also to Ian Olrich who mows the lawn whenever it is needed and has done so for many years.

The community is invited to attend and celebrate the Grand Opening of the Hall renovations and extensions. This will take place on Saturday 3 February at 12.00pm. Lunch will be \$20 for adults and \$5 for children. Please RSVP to Suzie Harrison on 0418 691 244 by 24 January.

advocate sport



Bowls

Dads Army: The 2024 season commenced last Thursday afternoon with two games of triples played. In the first game Peter Hayes, Brian Goodwin and Eric O'Keefe scored a shot on the last end to defeat Barry Hoad, Adam and Julie Hall 12 – 11. The second game was won by Noel Goodwin, Simon Porter and Geoff Salt who defeated the three Johns, (Watts, McCormack and McLean) 16 – 8. The chooks were won by Peter, Brian and Eric and the lucky raffle winner was Max Holstein.

President's Day: Fourteen teams played on Saturday, the winners were Brian and Noel Goodwin. Eric O'Keefe and Barry Hoad with two wins and 18 ends from a Barraba team on 2 wins and 16 ends. Andrews McGuffog, Graham Marshall, Garth Clare and Kevin Creighton came in third with two wins and 15 ends.

Twilight: The next twilight comp will commence on Friday 12 January with a 5:30 start.

Pennants: Players are reminded that the Open Gender Pennant Comp will start 2 March 2024. Names on the sheet on the notice board ASAP. For information contact Jamie Kerr.

Tennis

The 2024 Summer Comp kicks off on Tuesday 6 February at 7pm. Nominations to Hyde 0427 780 391, Trev 0459 799 119 or post on The Tennis Club Facebook page. Nominations close on Friday 26 January. The format will be four-a-side graded doubles, there will be eight weeks of ordinary rounds with the final to be played on Tuesday 9 April. Get in quick to secure a spot. The next Club meeting will be held on Monday 13 February at 6.30pm. Happy New Year and see you all at the net soon.

At the Nineteenth

Allan Laurie 72, Barry Hoad 73 and Cheryl McDonald 74 – who also won the putting competition with 22. The coveted 'Pink Shirt' for most putts went to Julie Hoad after she engaged her flat stick on 33 occasions. Long Drives sponsored by Tony 'Backhanded Larry' Asmus were smacked by Wayne Brennan (A), Jamie Bowden (B) and Julie Hoad (C). Best scratch score went to Wayne Brennan after he had 82 shots off the stick, while the sharpest shooter at both the 3rd and 16th pins was 'Mollydooker' Allan Laurie.

Play on Christmas Eve was abandoned due to wet weather.

Last Saturday Margaret Parsons racked up 17pts to win the weekly 9 Hole Competition, just a point clear of runner-up Peter Whellan on 16. NTP on 3 to Jenny Lisle. The previous Saturday Pete Whellan won with 16 points, runner-up was Col Higgins 14, while the NTP on 3 went to Peter Sendall. Saturday the week prior, John McLaren won with 14 points after he snuck home ahead of Mark Hogan on 13 points.

This Sunday is a stroke medal round for a prize supplied by A.J Cross.



Funeral Notice

LONERAGAN: Richard John

Late of Warrawee.

Formerly of Mudgee and Walcha

23/8/1937 – 6/1/2024

Loving husband of Suzanne (dec).

Much loved father of Amanda, Julie, Guy, Emily, Eve and all their families.

Requiem Mass for the Repose of the Soul of Richard will be Celebrated in it's entirety at St Agatha's Catholic Church, Boundary Rd, Pennant Hills (enter via Trebor Rd) on Monday 15th January at 11am.

Albert & Meyer

Australian Owned

Thornleigh 9484 3992

Death Notice

Eric George Partridge

22/09/1940 – 20/12/2023

Passed away in Bupa Armidale Aged Care
Aged 83

Survived by sisters Lorraine, Mel, Janette
and brother Ian.

Cremated at Piddingtons on 2/1/2024

In Memoriam

Mekinley Jayne Hobbs

26/12/2011

God knows how much we need them
and so he takes but few,

To make the land of Heaven,

more beautiful to view,

Believing this is difficult

still somehow we must try

the saddest word mankind knows

will always be 'Goodbye'

So when a little child departs

we who are left behind

Must realise God loves children

Angles are hard to find

Love Granny



Positions Vacant

Little Kindy currently looking for a Certificate III or higher with a possibility of becoming a room leader. Needs to be flexible with working hours and must have current first aid and working with children check. Please email resumes to: walcha@littlekindy.com.au

Walcha Council Positions Vacant



We have a number of exciting positions available and are seeking suitable applicants to join our team in 2024.

People & Performance Support Officer

Applications close 15 Jan 2024. An exciting, non-traditional Human Resources role, incorporating Risk, Governance, Training and more.

WHS Advisor Walcha Council & Uralla Shire Council

Applications close 29 Jan 2024. A shared role between Walcha & Uralla Council's for a passionate Work Health and Safety expert.

Manager Urban & Utilities

Applications close 29 Jan 2024. We are looking for a permanent manager for our Water, Wastewater, Urban & Waste teams.

Manager Strategic Planning & Environment

Applications close 29 Jan 2024. A great package available in a multi-disciplinary role for a strategist in planning, development & the environment.

Disaster Risk Reduction Coordinator

Applications close 29 Jan 2024. A funded position available on a term to 30 Aug 2024 with a possibility of a 3 year extension. Providing valuable services to the Walcha LGA in our disaster preparedness & resilience.

Please visit Council's Positions Vacant page for more details and to apply. <https://bit.ly/3A30YDc>

Phil Hood, General Manager

Walcha Council, PO Box 2, Walcha NSW

Public Notice

PRESCHOOL ORIENTATION DAY



All families who have children enrolled in preschool for 2024 (or are thinking about it) are invited to attend the orientation day on Saturday 20th January 2024 from 10am-12pm at the Preschool.

This day is to introduce your child to the preschool environment, and to give them an opportunity to explore and settle in with you there. Many of the preschool staff will be there so come along and meet our educators and have a look around at our preschool. This is also a great opportunity to ask any questions that you may have.

Enrolments are now open and can be completed online by going to: <https://walcha.nsw.gov.au/community/children-young-people/walcha-preschool/>

Paper enrolment forms are available at the preschool during normal opening hours. Children need to be three to attend preschool. Enrolments will be taken and places held for children turning three before 31st July 2024. Children turning three after this date will be able to attend if vacancies exist, but places will not be held for them. Council will be answering any questions you may have, and providing information about fees, subsidies, bus days, extended hours and the preschool program that is based on the Early Years Learning Framework. For enquiries please call Alice on 02 6777 2117 or Walcha Council on 02 6774 2500.

Phil Hood, General Manager

Walcha Council, PO Box 2, Walcha NSW

Walcha Tennis Summer Comp starts Tues 6th Feb. Nominations to Hyde 0427 780 391, Trev 0459 799 119 or post on the Tennis Club Facebook page. Noms close Fri 26 January.

For Sale

Ride-on Mower Craftsman by Husqvarna with 2 x bag catcher \$1200. P 0498 382 421.

Kelpie x Border Collie Pups Both parents work. Ready to learn. DOB 30.8.23, W/V/VC. 1F, 1M, MC978142000332927, MC978142000333066. NSW BIN B0006 68102. Kentucky, \$330. Craig 0478 004 706.

WALCHA TELECOTTAGE
FOR ALL YOUR PRINTING NEEDS
PHONE 6777 1111



New England Accounting & Taxation Services Pty Ltd

Specialising in:

- Accounting, Business & Taxation Services
- BAS & IAS Preparation & Lodgement
- Bookkeeping & Secretarial Services



New England Accounting & Taxation Services Pty Ltd is a CPA Practice

Brendan Blake CPA

10W Hamilton St Walcha

Tel.: 02 6778 0054

Fax: 02 6778 0035

Email: ats@ozemail.com.au

Nick Moore

PLUMBING & EXCAVATION SERVICES

WALCHA & SURROUNDING AREAS



Highly qualified and experienced plumber
All aspects of Plumbing and Gas Fitting
Wood heater installation
Roofing and Guttering
Gold License No 59555C

Nick 0418 691 306

nickmoore203@yahoo.com.au

Katy 0422 034 660



CURTIS

MOWERS & SMALL ENGINES

- Mowers • Ride-ons
- Pumps • Chainsaws
- Whipper snippers
- Chain sharpening
- Bar dressing

SELLING New 30 & 40 Tonne Petrol Hydraulic WOOD SPLITTERS

- Chainsaw chain • Pumps & Generators •

JAMES – 0488 020 762 (7 Days)



CPC SPRAYING SERVICES

- Boom and Reel Spraying
- GPS Fitted 4WD Small Truck

Phone Peter 0404 471 105

STORAGE CENTRE WALCHA

20' Containers available for rent \$35 pw + GST
Secure Undercover parking for cars,
vans etc \$15 pw + GST

ANGUS 0427 787 332

Tree lopping
Tree removal
Truck & chipper
Bobcat
Post hole digger
Trencher
Woolshed cleaning
Stockyard cleaning



Scott Kermode

0427 100 889

treetopservices@bigpond.com

A G W RURAL CONTRACTING

GPS Equipped boom spraying

Andrew Wauch 0427 549 748

ENGINEERING

John Wall

- Stock floats • Feeders • Sheep & cattle yards • Steel framed sheds & mobile welding

6778 0588 • 0428 778 087



Andrew: 0427 549 748

Toni: 0421 972 354

CHIROPRACTOR

K Samantha Goor

B.Sc. Anatomy (NSW) M Chiroprac (Macq)

Tuesday & Friday from 9.00am

6777 1340

STACES FAST FREIGHT

Delivering
Tamworth – Walcha
0429 608 409



**MOBILE-FIX
AUTO+AIR**
Mobile Repairer & Airconditioning Specialist
Licensed Vehicle Repairer
Lic No. 45698 RFA Lic No. AU22616
PATRICK STACE – WALCHA
Mob. 0428 780 077 Ph. 6778 0595

**M L MASSAGE
THERAPY**
Remedial and Sport Massage
MADDIE LANCE
TUES TO FRI 9AM - 6:30PM
0432 635 994

MOBILE
TREATMENTS
AVAILABLE

church notices



ANGLICAN

St Andrew's: Family Service 10.00am

Nowendoc: Family Service 2.00pm

Phone 6777 2543 or email:

walchaanglican@gmail.com

PRESBYTERIAN

Walcha sunday 9.30am

All welcome. Phone 6777 2539.

CATHOLIC

Sunday Mass 10.00am

THE APSLEY Advocate

Advertise here!

Like to advertise on our Trade Page?
Small box ad 30mm h x 63mm w \$30.00 p/wk
Large 54mm h x 63mm w \$40.00 p/wk

Call us today on 6777 1111

DISCLAIMER LETTERS TO THE EDITOR are submitted on the condition that The Walcha Telecottage as the publisher of The Apsley Advocate may edit and has the right to, and license third parties to reproduce in electronic form and communicate these letters. They are published at the discretion of the Editor and Board. The Apsley Advocate is printed by The Walcha Telecottage, PO Box 116 Walcha NSW 2354. Phone 6777 1111 Fax 6777 1112. The Walcha Technology Co Operative Limited, the Editor and Staff of this Newspaper have published any article here-in in good faith and bear no responsibility in respect to the accuracy of the information contained in such article. Any person or persons publishing material in this Newspaper do so in the knowledge that they shall personally accept any responsibility for the accuracy and other correctness of such articles and also accept full responsibility for the legal consequences if it be found that the article contains any inaccuracies in the contents of any such articles. **DEADLINE MONDAY 4.30PM** Editor: Anthea Macpherson. Advertising and Sport: Rosalie Gibson, Megan Scrivener, Emily Scrivener and Joscisca Matapakia.

Marchant

BROS. Est. 2000

WATER CARTING

DELIVERING
7 DAYS
A WEEK

WALCHA COUNCIL
CERTIFIED DOMESTIC
WATER
CARTER
10,000 litre tank



A FULL RANGE OF AFFORDABLE TRANSPORT & EARTHMOVING
Dam construction/maintenance, stick raking, road building,
site prep, pipe laying and all timber work.

Check out our website for the full range of machinery,
attachments and services available

FIREWOOD AVAILABLE

Earthmoving and Heavy Haulage Transport
Jason 0427 490 487

02 6777 2024 marchantbros@bigpond.com
www.marchantbros.com.au

BOWLING & RECREATION CLUB

Mon – Wed 4.00pm – Close

Thursday 11 12.00pm – Close

Ladies bowls recommence 18
January

Friday 12 2.00pm – Close

2.00pm Bingo

6.00pm Bistro

- Sticky Pork Ribs
- Thai Beef Salad
- Curried Prawns and Rice
- Normal menu available, takeaway
and delicious desserts.

6.00pm Free Bingo

6.00pm Tickets for raffles

MEAT & VEG TRAYS

8.00pm Raffles & Members Draw

Saturday 13 11.00am – Close

6.00pm Bistro

Sunday 14 11.00am – Close

12.00pm Bistro open. Children
U/10 kids meal free with an adult
order.

12.00pm Meat, fruit and veg
raffles. Drawn at 1pm

12-2pm \$5 schooners

Open as normal on
Australia Day - Raffles
and thong decorating
competition

Twilight Bowls
recommence this Friday

MEMBERS
DRAW
\$50

YOU MUST BE A MEMBER FOR
2023/2024 TO BE ELIGIBLE TO WIN

NEXT POKER GAME
- Saturday 20 January

Do you live in Walcha Shire? If so you MUST be a member to enter the Club
Social Membership \$15 – Full Membership \$105. PHONE 6777 2077

FOR ALL YOUR EARTHWORKS TRANSPORT AND ELECTRICAL NEEDS

ALL ASPECTS OF RURAL, COMMERCIAL & CIVIL WORKS



- Freight & Transport • Machinery Float • Stick Raking
- Road construction and maintenance • Trenching
- General Earthworks • Drilling • Mulching
- Dam maintenance and construction
- Erosion Control • Site Preparation • Electrical Works

Ian Notley 04188 29188 • Mark Notley 0422 637 686

www.eteservices.com.au



LINMAC ENGINEERING

IF YOU NEED IT – *We make it!*

CUSTOM TRAYS AND TIPPERS



- Customer consultations
to make sure we build
to YOUR individual
specifications
- Sandblasted and
powdercoated
- Toolboxes, timber floors,
tipper trays, water tanks ...
whatever you need!

AUTHORISED HUSQVARNA DEALER



Check out our new facebook page:
Linmac Engineering Walcha

211N Pakington Street WALCHA
Phone 6777 2822 Email enquiries@linmacengineering.com.au