

THE APSLEY Advocate

CIRCULATION 1810 – P 02 6777 1111 F 02 6777 1112 wtc@walchatelecottage.com.au walchatelecottage.com.au

6 December 2023

Celebrating Walcha's water security — New \$11 million water storage dam completed —



Walcha Mayor Eric Noakes, Council's Director Infrastructure & Development Alan Butler, General Manager Phil Hood, Northern Tablelands MP Adam Marshall and Member for New England Barnaby Joyce.

A water security revolution has taken place on the outskirts of our town, with the completion of the first water supply dam built in NSW in more than a quarter of a century.

Member for Northern Tablelands Adam Marshall, along with the Member for New England Barnaby Joyce, Walcha Mayor Eric Noakes and community members, were on hand Saturday to celebrate the completion of the \$11 million Water Supply Dam.

The critical project is a joint initiative between the Australian and NSW Governments – the federal funding portion of \$2 million delivered from the National Water Grid Fund Connections Pathway and the State committing \$9 million from the Safe and Secure Water Program. Mr Marshall said it was a 'red letter' day for Walcha, with the completion of the 300 megalitre dam.

"The drought of 2019 drove home to many rural communities just how vulnerable town water supplies are and Walcha was not immune, almost running dry," Mr Marshall said.

"This new dam quadruples Walcha's off-river water storage capacity, building an almost two-year water supply buffer against drought, and enabling the

community to grow.

"I'm incredibly proud of Walcha Council, which is leading the way for the rest of the State, successfully constructing the first new town water supply dam in over 25 years, since Split Rock Dam was opened.

"Congratulations to Walcha Council, especially Mayor Eric Noakes, who spearheaded the push for this project and delivered it quickly and efficiently".

Walcha Mayor Eric Noakes said this project was one of the most important water infrastructure projects in the region's history and would go a long way towards creating a stronger, more resilient community.

"The new storage dam has been the number one priority for Council. It will enable us to be better prepared to face the devastation of drought events by providing a safer and more secure source of drinking water," Cr Noakes said.

"It has also been a major win for Walcha's economy with local tradies and contractors picking up a lot of work, keeping much of the grants funds local."

Council is now filling the dam, pumping from the MacDonald River, under its extraction licence. The dam currently sits at 25 per cent of capacity.



Strawberries & Blueberries

2 for \$10

Avos 2 for \$3

Aussie Grapes

Mangoes & Deanos Trout

Christmas hampers ready to go or made to order

Open from 6.30am Monday to Saturday

'Support local this festive season'

Ph 67772977

Email hello@

thefruitshop.com.au

Taking Christmas Orders

FILL THE FREEZER
READY FOR CHRISTMAS

Hindquarter Beef
or Forequarter Beef
\$12.99kg

Sides of Lamb
\$10.99kg

**CROSS BROS.
BUTCHERY**

SAVE ON BARASTOC GOLDEN YOLK AND SCRATCH MIX

Provide your birds with a nutritious, balanced and complete diet.

Call 6777 2588 6 Aberaldie Rd, Walcha
www.wvs.com.au





OK EARTHMOVING

Specialising in road construction & maintenance

• Stickraking • Dam building • Erosion works



Bulldozers • Excavator • Tip-truck • Vibrating Roller

PH 6777 7430 FAX 6777 7448

PETER O'KEEFE: 0429 944 821



EVE FLOWERS

*Gorgeous fresh flowers
delivered to Walcha, Monday to Friday*

*A lovely seasonal selection direct from our farm and
fellow Australian growers*

*Specialising in unique and sustainable floristry
for weddings, events and funerals.*

Florist open 6 days
Phone 0409 566 099
or order online at eveflowers.com.au
45 Bridge St Uralla 2358

around the traps



By SIMON NEWTON

I hope everyone has enjoyed the mild weather over the past four weeks but summer appears to be moving in this week. Locally the temperature will rise into the early thirties and once you get down from the altitude and onto the plains the sweat will be beading off the brow at around 40 degrees. The rainfall has been a game changer for all with confidence growing as the grass gets longer. We are by far not out of the woods and a week of hot weather will put this to the test. No matter who you talk to around the traps they are still concerned about surface water. Will those heavy dam filling storms still evade the tablelands? We might need to look to the north to help us fill some dams as a tropical cyclone appears to be developing over Far North Qld. The recent change in season has really started to bring the weeds out in force and no doubt chemical is flying off the shelves.

I urge everyone to form your own opinion over the next topic, but if you haven't heard of the federal governments Agriculture and Land Sector Plan then you should do your homework. The Australian government committed to ambitious emission reduction reaching net zero by 2050 and now it is time for you to offer your feedback by the 13 December. No matter how you look at it, this plan will consider options associated with forestry, activity on conservation lands, Indigenous Protected Areas and public and privately held land. Agriculture has made up 16.8% of national greenhouse gas emissions in 2020 – 21 with approximately two-thirds of Agriculture's emissions being methane produced during digestion by ruminant livestock. Predominantly livestock and forestry are what makes our districts economy turn and be aware that there will be major changes coming to keep in line with the governments net zero emission targets. I think it will affect everyone from the local landholders to the consumers, remember if it costs more to produce then the extra price will need to be picked up by someone.

We have been saying it for a while, but finally the major supermarkets Woolworths and Coles will come under a senate inquiry regarding price gouging. I have been saying it for some time that the prices received by the producers compared to the shelf price is well out of proportion. This enquiry comes on the back of both supermarket giants announcing multibillion dollar profits during this high cost of living crisis. It is no doubt that Woolworths and Coles have the monopoly in the supermarket sector, but even the prices on our very own supermarket shelves have increased dramatically.

The livestock markets are continuing to respond to the recent change in the season with the beef market now improving week on week once again with the EYCI rising to 567c/kg, which is 200c/kg above a month ago. Light grass restocker cattle have improved by over 100c/kg and feeder cattle has bounced by nearly 80c/kg. Processing cattle have been a tad slower to respond due to the large backlog of pre-booked cattle which will hang around until January, but they have also improved by 50c/kg in our physical markets. While the grass continues to grow the more people we see re-entering the lamb market, with store lambs improving by \$20-30/head over the last few weeks. Hook rates of \$6/kg have given some producers the confidence to show some market resilience, especially as we are no longer in the mind set of giving our livestock away.

Tamworth yarded 1955 head of cattle, up 805 head on the previous week while Gunnedah drew for 3585 head as producers look to cash in on the recent rise on the beef market before a month-long break for the Christmas period. Demand was strong for restocking and feeder cattle with all categories quoted dearer. Angus steers, 274 kg topped at 388c/kg, feeder steers 466kg topped 333c/kg while the heifer portion to feed made to 293c/kg. Heavy export cattle to kill sold to 301c/kg for 697kg while kill cows gained 10c/kg topping at 220c/kg.

3400 sheep and lambs met stronger competition on Monday in Tamworth with new season lambs selling too \$176, while the best of the old season heavy lambs topping at \$178. Mutton values improved with the best of the merino ewes selling to a top of \$88, XB ewe to \$82 and the best of the wether portion made to \$72.

This weekend don't miss the dog trials

By Tony Overton

Walcha Dog Trials are on again this weekend. With record entries we are looking forward to seeing some fantastic competition, and with both Sheep Utility Trial, and a Cattle Trial there will be plenty of action for spectators.

Due to large entries the committee has decided to start both Sheep and Cattle Trials at 2.00pm on Friday afternoon. The cattle will be starting with a combined Novice and Encourage event, which will continue through most of Saturday then the Open will start.

A Cattle Trial consists of three head of cattle being maneuvered around an obstacle course within five minutes, with the handler only being able to command their dog and open gates. The Utility Trial will also be starting at 2.00pm on Friday with the Novice and Nursery events being run together. The Open will follow with finals on Sunday afternoon. A Utility Sheep trial consists of three sheep being let out into the main ring, the dog will pull them to the other end of the ring then put them into yards, a larger number are then loaded into a drenching race, then three are drafted out and let back into the main ring. These three are then moved through two obstacles and put into a 3m x 3m pen in the middle of the ring.

We would also like to thank our sponsors for their generous support. Walcha Carrying Co for carting the stock, Taylor Family for providing the sheep. Gary Rhonda Olrich and Europambela for the loan of their cattle. Walcha Vet Supplies, Steve Liddle Contracting, Coprice Dog Food, Cobber Dog Food, NTIB Insurance brokers, Pitt Sons, Gates Performance Genetics, Nil-Rain working Dogs and Boehringer Ingelheim and Elders Walcha.



WANTING A DAY OUT

Come to the
Walcha Showground
Full catering - Breakfast
from 7am and lunch
Saturday and Sunday

Walcha Rotary members
catering for the weekend

Walcha Twilight Markets this Friday

Derby Street, Walcha is set to host the Walcha Twilight Markets again. This Friday December 8 from 5 – 7pm. After last year's huge success, there are more stallholders and shops on board.

Local Artisan stallholders include jewellery, pottery, hair packs, honey, homewares, candles, timberwork and skin products.

The shops lining Derby Street and Fitzroy Street will be staying open for extended hours. With many food and drink establishments in town it's a great opportunity to catch up with friends or take your family out for dinner and to get some Christmas shopping done.

There will be live music, face painting available for the kids and a visit from Mrs Claus!

If you would like to attend as a stallholder, please contact Bec Partridge on 0412 143 440 or Bec Hoy 0400 881 775.



Stock and Property Watch

www.nutrienharcourts.com.au

Family Home with views over town



- This spacious home is situated a short stroll from town.
- The weatherboard and iron home consists of four bedrooms, three with built ins. The fourth bedroom has a walk in robe and large ensuite with corner spa.
- Open plan lounge with wood heater and the most amazing views of town.
- Spacious dining flowing through to the sun drenched family room with gas heating for winter.
- Huge timber kitchen with cooktop, under bench oven, dishwasher and an abundance of cupboards.
- Fully enclosed two tier yard with covered entertaining area, wood shed, garden shed and double garage with remote access.

\$520,000 MAKE AN OFFER

Enquiries Peta Carter: 0407 350 781

STOCK FOR SALE



THIS FRIDAY 8 DECEMBER

A/c RM & PL Wright

80 Angus Steers EU

A/c Glen Collin Pastoral Co.

100 PTIC EU Angus Heifers

(Autumn calvers)

140 Angus Feeder steers

A/c J & S Zordrager

50 EU Angus Steers

(12-15mths)

Merry Christmas girls

Enjoy 30% off
shoes and selected
summer fashion

afterpay
SHOP NOW, PAY LATER.
coming soon

Gift
Vouchers
available

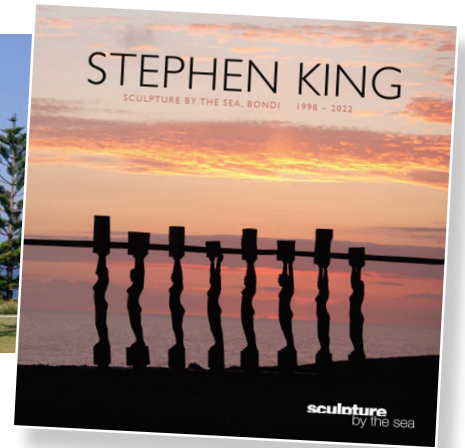
ciao
love Shelley

Christmas trading

Usual trading hours to Friday 22 December, then:
Saturday 23 December 10.00am – 5.00pm
Sunday 24 December 10.00am – 1.00pm

The New Birds Boutique • Fitzroy Street • 6777 2002

Double Decade Club for local sculptor



2023 has been a huge year for local sculptor Stephen King, having just marked an astounding 20 years of exhibiting at Bondi's Sculpture by the Sea.

To celebrate his entry into the Double Decade Club, organisers of the event presented Stephen with this book detailing his sculptures and journey throughout the competition.

Stephen has also been selected five times to exhibit at Sculpture by the Sea in Cottesloe, WA, and his sculptures are featured in the Snowy Valleys Sculpture trail, which was created by the team at Sculpture by the Sea.

This 40 page, colour book, complete with stunning photos of Stephen's sculptures, includes a foreword by Founding CEO David Handley and an essay on the artist by Dr Michael Hill Head of Art History & Theory at the National Art School. There is also an interview with Stephen, as well as his CV and bibliography.

New face at NAB in time for Christmas

Staff at Walcha's NAB welcomed a new team member recently, with the arrival of Miranda Yates (second from left). Miranda joins Annette Beggs, Leanda Tisdell and Jocelynn Denny at NAB. With Christmas fast approaching the team have got into the Christmas spirit, decorating the branch, and look forward to assisting you with all your banking needs.



RayWhite

AUCTION

185W Hill Street, Walcha

- 4.04* ha/10*acres
- Freshly painted 3 bedroom home
- 2 bay lockup garage, garden shed
- Perfect opportunity to down size or start your real estate adventure
- Potential future subdivision

3 1 2

Auction

Thursday 7 December
6pm
Tamworth Town Hall

Baden Chaffey
0488 697 416
baden.chaffey@raywhite.com

WHY WAIT?
Ray White Tamworth | 02 6766 14

LIVE ONLINE AUCTION
raywhitetamworth.com

Mural Opening and Art Show

The local community are invited to attend an Art Show and Mural Opening from 10am on 13 December at Walcha Community Care, Middle Street Walcha.

On display will be artworks from the Community Care Art Group along with a new mural. The mural, started in late June, has been painted and designed by Sue Jackson. Her design depicts the care the community provides for vulnerable citizens and the caring and significant contribution Walcha Council makes to community welfare.

"I have thoroughly enjoyed painting the mural. It was only meant to take two weeks, but it has taken on a life of its own, Sue said.

"The mural has been painted on a wall that is two metres tall by nearly six metres long, so I have had needed a little help. Meg Nolan has been involved doing some supportive painting on sections I couldn't reach, such as the sky."

The mural, which is receiving some final touches this week, will be well worth a look. Walcha Mayor Eric Noakes will be on hand for the opening and some delicious morning tea will be provided. Sue and all at Walcha Community Care hope to see you next Wednesday.



Walcha Races back on track

Walcha Jockey Club returned Jim Nivison as President on Tuesday night at their AGM which was well attended by community members. "I would really like to thank the community for their support, with many new faces attending the AGM," he said.



Anne Martin remains as the Club's Treasurer and Simone Timbs is the Jockey Club Secretary. Many who attended put their hands up to join the Committee which organises the annual race carnival. "We also received many offers of support to help in preparing the grounds and getting ready for the Races on 9 – 10 February next year, which we greatly appreciate and we will be in touch in the New Year," Jim said.

Jess Williams and Charlotte Lyon volunteered to organise the Kids Fun Day on the Saturday and they would love to hear from parents with young children who are able to assist them. "To encourage patronage on the Saturday we are offering free entry for all race-goers," Jim said.

The one mile footrace for adults and footraces for kids will also be a feature on the Saturday, with Lance Partridge taking the helm in organising these. Anyone interested in assisting is asked to contact Lance.

The Committee are planning to have a catered marquee on Friday for those looking to enjoy lunch undercover with a great view of the finishing post.

Tickets for the 2024 Walcha Races and Marquee will go on sale in January.



Christmas Offer!!



Its time to re-sheet that driveway or cattle yard! Take advantage of our LOCALS CHRISTMAS OFFER!

On offer : 15th Nov - 15th Dec!

**** conditions apply***

 SCOTT@BROOKLYNQUARRY.COM.AU

 0434 011 570

 1643 OXLEY HWY, WALCHA RD. NSW (BY APPOINTMENT ONLY)

 WWW.BROOKLYNQUARRY.COM.AU



PKF Chartered Accountants offer clients access to full suite of professional services including:

- Accounting and financial reporting
- Taxation Services
- Business Support
- Superannuation
- Cash flow projections
- GST support and advice
- Bookkeeping and record systems
- Audit and assurance
- Strategic alliances

www.pkf.com.au
12n Derby Street
Walcha NSW 2354
Phone: 6777-2377



PETER BRAZEL

HAY & SILAGE SALES



Silage Contracting

22 TON EXCAVATOR - 13 TON LOADER
15 TON VIBRATING ROLLER

Tipper

PASTURE SPRAYING

D3 DOZER - 45ft DROP DECK TRAILER



Peter 0427 013 133 or 6777 6534
Irwin 0408 311 321

garden clippings



Gardeners and farmers will all be rejoicing with the wonderful rain we have been experiencing. As with any flush of growth, moisture is paramount to maintaining plants, especially in December and January. Lawns require mowing more regularly too. Lift the cutting blades on your mower so the increased grass depth will provide more shade and soil moisture retention. After mowing it is advisable to clean the cutting deck. If possible, try using a garden blower instead of water.

December and January are the months when the hydrangeas are coming into flower. They like a southern aspect to grow in and require regular watering especially on hot days. There are many varieties available and they make a delightful splash of lasting colour during the summer holidays. Colours range from white through to pink and nowadays a lovely bright red. Flower heads vary too – there are the mop heads, double petaled, lace caps and some that have dark stems and foliage. There is a soft leaved white variety called 'Annabel' which is very popular in Canada. It multiplies like a perennial plant and is extremely frost hardy. To maximise their flowering, leave pruning them until very late winter. In mid spring the flowers start to grow in a beautiful lime green then progressing to white then back to lime green at the end of the season. It is very striking planted next to a burgundy coloured shrub such as berberis, physocarpus 'Diablo' or 'Nishiki Red' or Photinia.



Another interesting plant to consider for its flowering appeal this time of year is the Fairy Fishing Rod. Aptly named as it just looks like it. It is drought and frost tolerant with thin reed like foliage. The flowers come in white, pink, salmon-red, purple, and lavender. They grow from a bulb looking much like a miniature gladioli bulb. Division is very easy but they do sulk and may miss a season flowering. They are best planted anywhere except in shade and look wonderful near a pond or water feature for their reflections. They look fabulous when the wind catches the flowers and they float about in the breeze.

In the veggie patch, it's all stations go. Growth is in leaps and bounds this time of year for just about everything. Weed management is very important too and keep an eye out for any unwanted pests. Organic methods are your first line of control. Insect netting is excellent for lettuce, bok choy, spinach, mustard or any leafy green vegetables. Beer traps and wood ash certainly curtail the slugs and snail. Fruit flies are best controlled with Naturelure. Another way is to grow plants that attract predator insects to your garden such as daisies, salvias, zinnias, cosmos, sunflowers, coriander and parsley.

As this is the last Garden Clippings column for 2023 and on behalf of the Walcha Garden Club committee, a very big thankyou to everyone who has helped make our 75th Anniversary year a great success. We also appreciate the support of the Walcha Telecottage in publishing this column.

Merry Christmas and a happy New Year to everyone. We look forward to another successful year in 2024.

Lament – A garden, it feeds more than the table, it feeds the soul.



Walcha Council Community Care

Grand Opening of COMMUNITY CARE MURAL

Opening by Mayor Eric Noaks
 Plus Community Care
 ART GROUP SHOW

11s Middle Street, Walcha
 WED 13 DEC 10am to 11:30am
 Morning tea provided
 All community members welcome

Reducing waste at WCS

This year Walcha Central School was successful in obtaining the Sustainable Schools Grant.

Eighteen students from Years 3 – 6, known as 'Waste Warriors', have been working on the project 'Reduced Waste, Increased Harvest'. The focus of this project was to reduce the amount of waste entering landfill.

Initially we completed a waste audit and as a result, new four-way waste sorting systems were installed in all K-6 classrooms. We now sort our waste in red (general), yellow (recycling), white (10c collectables) and kitchen caddies (compost).

Four extra-large compost bins were installed in the vegetable patch for the food scraps. On average

6.6kg of food scraps are composted each day = 33kg each week = 330kg each term = 1.32 tonnes each year.

A new 3m x 3m greenhouse with shelving and garden beds has been installed. The compost is going to be used to grow plants. We aim to have the greenhouse in operation early 2024.

By sorting our waste, we have successfully achieved over 70% reduction of waste entering landfill. Over 50% of our waste is now composted. Walcha Central School would like to thank local businesses and gardeners who have donated to this project.



Emily, Riley and Veja-Lee filling up the compost bin



Saxon, Riley, Bentley, Franki, Veja-Lee, Emily, Anthea, Dion, Olivia, Max and Kayleigh in front of new garden beds and greenhouse

TRLX SALE DATES

This Friday 8 Dec

STORE SALE

3550 HEAD

Expected

Monday 11 Dec

Last Sale for 2023

Monday 8 Jan

**FIRST FAT SALE
for 2024**

FOR INFORMATION

CALL PITT SON'S

6777 2000

SAM PAYNE

0428 667 404

ANDREW BLOMFIELD

0428 667 402

TROY DAVEY

0427 157 557

Pitt Son's REAL ESTATE
& LIVESTOCK

SAM PAYNE 0428 667 404 | ANDREW BLOMFIELD 0428 667 402

RON VINCENT 0427 775 821 | TROY DAVEY 0427 157 557

FOR LATEST
UPDATES



6777 2000

www.pittsons.com.au

Something Special



Discover your dream home!

- Stunning four bedroom
- Main bedroom featuring an ensuite bathroom and built-in robes
- Modern kitchen, equipped with a Bosch electric oven and induction cooktop
- Spacious lounge room with access to the front garden.
- Very large family room bathed in winter sun, opening onto the deck and lawn area
- New carpet throughout
- Stay cozy with ducted reverse cycle heating and a wood fire
- Entertain in style in the expansive undercover outdoor area
- Garage with an automatic door



Experience this inviting home



\$590,000

what's the goss



with AJ Cross

A Service of thanksgiving and celebration for the life of Philip Roy Chandler was held at Piddingtons Funeral Home and Crematorium on Monday, where 'Paddles' family and friends were requested to wear something colourful and they didn't disappoint. Inside and out there was a sea of Hawaiian shirts, Philip's favourite attire, and colours galore to farewell 74 year old 'Paddles'. May he continue to Rest in Peace.

Over 50 years ago Round Swamp Cricket team were dismissed for a modest 82 on the old Nowendoc School ground by the homeside, thanks to a sensational fast bowling display by R.A (Bob) Laurie who sent down 6.1 overs, four maidens to capture ten wickets at a cost of eleven runs. Top scorer for the Swampers was Philip Chandler who compiled an unbeaten 60 runs batting at number four, practically 75% of the team total. His brothers Denis and Maurice (Blue) failed to score as did Paul Hoy, Gordie Brooks, Gorie Bird, Ray Bird and Robert Marchant who were all dismissed for globes tallying seven out of eleven batsmen in all.

My favourite son-in-law Josh Wellings is currently giving our Apsley Street residence a make over and has replaced an aluminium sliding window (1500 x 1250) which is still in reasonable condition. Anyone who would like a window that size free of cost please contact me or otherwise it will be off to the Waste Management Facility or as most of us refer to as the Tip.

While attending the recent Cook Islander's reunion camping trip at Bonny Hills local adventurer Tim Baumer experienced a few hassles when it came to pitching his tent. His much better half Beta soon worked out what was going wrong when she suggested Tim may have left the tent poles at home. *Correct* - but nothing a quick trip to Port Macquarie

couldn't rectify. Where 'our knight in shining armour' reckons he purchased a bigger and better tent than the one he had and for a cheaper cost. Win win Tim!

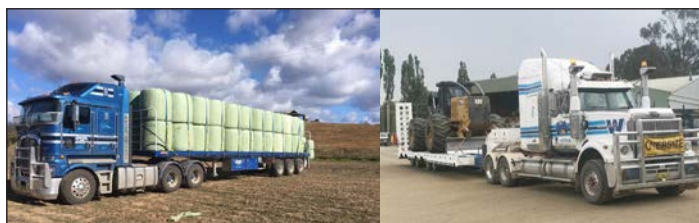
Little wonder punters in the weekly New England 777's competition weren't in the hunt of selecting the winners of Race 7 at Brisbane, Sydney and Melbourne last Saturday. At Doomben 'West of Dalby' saluted at the juicy odds of \$22.50, Phearsan won at Rosehill paying \$17.40 while Serasana got the job done at Caulfield returning \$13.50. Probably the reason no one was alive after Race 1.

Although the Walcha/Urala Cricket team won fairly comfortably last Saturday at Peter Fenwick Oval against Armidale City they hit a bit of a rough patch at the halfway mark of their 20 overs. In the space of seven deliveries City bowler John Glee dismissed opener Shannon Rafferty for 31, Nick Endacott for a golden duck, Jacob Sherrin for silver duck and then Brian Mansfield for two runs to capture 4/2 in seven balls.

Congratulations to local lady lawn bowlers Esther Hunt, Lyn Burnell and Carmel Ryan on winning the Guyra Women's Triples last week after going into the competition as underdogs. The girls defeated two Armidale Ex Service's teams 26 – 16 and 18 – 10 to finish with the best for and against which entitled them to a cash prize of \$100 each. Good on ya Girls.

Also representing Walcha at the Guyra Triples were Sari Andrews, June Hayes and Rosie Aitken who defeated Guyra 24 – 10 before going down 15 – 14 to Glen Innes on the last end of the game. Well done to Sari on winning the Ivy Makeham Memorial Singles title after she downed Lyn Burnell 23 – 13 in the final last week.

There I was thinking if the weather forecast was 100% chance of rain there would be absolutely no chance of it not raining. Luckily Swimming Club organisers didn't take notice of the forecast last week because if they did the Flippers wouldn't have held their first swim meet of the 2023/24 season. Club President Yolanda Mooney reported that all the members that turned up on the day were very enthusiastic about hitting the water.



45ft flat top • 45ft single deck cattle float • 26mtr B Double
19mtr mini B Double • Low Loader available for hire



BRIAN
Smith
TIMBER
TRANSPORT

Call us for
your large
Transport
needs

WALCHA
02 67772126

Bonnie Smith 0429 772 077
Brian Smith 0427 780 216

THE APSLEY Advocate

Weekly editorial and advertising deadlines
Monday 4.30pm

Financial Services



- Rural and Commercial Finance
- Leasing
- Home Loans
- Insurance Premium Funding

Kel Penfold

6766 5309 : 0427 667 118

Wednesday Golf

Our golf was washed out last week, so Pip Monie's trophy was up for grabs again this week.

We played par in quite difficult conditions after all the rain. Marg Parsons was our winner with a score of -2.

Sweepstakes went to Sal McCormack with -3, Simone Sweeney -4, Sally Rutherford -6, and Deb Richards -7, who counted out four others on -7.

NTP on 3 was Robyn Salt and Cheryl McDonald took out the pin on 16, just cms from getting a hole in one.

Cark Street won the second shot on seven and Simone Sweeney was the best with her second shot on 18.

Today is our Presentation Day and Christmas Lunch. We are playing a novelty three person event, and it is a draw for partners.

It is our only Club Charity Day and this year we are supporting ovarian cancer.

At the Nineteenth

A stableford round for a trophy donated by Jamie Bowden was contested last Sunday where Lee Fletcher survived a countback with Will Nicholls to collect the prize after both players accumulated 33 points.

Sweepstakes went to the runner up on 33 points, Will Brennan 32, Michael Stackman, John McCormack, Andrew Robertson, Barry Hoad and Owen Presnell all on 30 points.

In match play Willy Brennan defeated Michael Stackman 1 up and will now take on Barry Hoad in the final, whereas Simone Sweeney rounded up Sue Partridge 1 up.

Bradman's Bat was taken out by Margaret Davidson after she posted a modest 19 points, second shot on the seventh hole went to Michael Stackman while third shot on the 17th was played by Willy Brennan.

Sharpest shooter at the third pin was Pauline Carter and no player was clever enough to reach the beach on the home hole.

This Saturday is the annual Ann Berry Memorial 3 person ambrose event which is scheduled for a 9.30am register for a 10am shotgun start.

Sunday is Presentation Night commencing after a 4BBB Medley has been played for trophies donated by New England Accountants Tax Service. Tee off time on Sunday is at 1pm.

Tennis

Round 7 of the Spring Comp was washed out. Round 8 (the final ordinary round) of the Spring Comp was played out in warm conditions on Tuesday 28 November.

Popyrin: E Blomfield, M Ireland, B Kommeran and T Tape defeated Millman: T Willock, P O'Brien, A Barillaro and J Burgess 32 to 17.

Ebden: D Wall (floating for D Sweeney), C Ireland, S Blake (floating for Trev Gibson) and R Mathews defeated Purcell: M Lockyer, C Bruce, A Blomfield and P Tape 28 to 27 with the match going down to the wire.

DeMinaur: DA Locke, D Clark, G Wall and S Ireland defeated Bolt: H Thomson, E Habermann (floating for R Bagnall), K Smith and T Lestrade (floating for M Luchich) 30 to 17. Well done to all players. Thanks to our floaters.

The teams that made the Semi-final are: Poyrin: 214, DeMinaur: 200, Ebden: 187 and Millman 173. Congrats to those teams. Purcell came in with 163 and Bolt 158. 1 will play 4 and 2 will play 3 on Tuesday 5 December in conjunction with our Christmas Party. All members are welcome and encouraged to attend. Can all team Captains make sure their players are ready to go on the night. Anyone who needs a floater MUST run it pass the Grading Committee being the finals. Kick off is 7.00pm

sharp. The next Club Meeting will be held on Mon 11 Dec at 6.30pm and all members are welcome to attend. See you all at the net soon.

Bowls

Dads Army: Players are reminded that on Thursday the 14th we will be joining the Ladies for their presentation day. Starting time is 9am for 9.30 and for catering purposes please write your name on the sheet on the notice board by the 7th of December.

On a chilly and windy afternoon last Thursday afternoon the ten players present made up a game of triples and a game of pairs.

In the triples, Noel Goodwin, Geoff Salt and John McLean defeated Mick Bullen, Matt Andrews and John Watts 17 - 12. After 8 ends the score was 9 all however after scoring a four on the next end the winners continued on for a good win.

In the pairs, Barry Hoad and Peter Hayes led 8 - 5 against John McCormack and Eric O'Keefe before losing the next six ends only to fight back on the last few ends to force a 16 all draw.

John and Eric won the chooks on a count back and the raffles were won by Barry Hoad and Geoff Salt.

Cricket

City v Walcha/Uralia 3rd Grade

Walcha/Uralia	
B USSHER c Gilby b Landsborough.....	10
D MORLEY c Conroy b M Rhaman.....	34
P MOONEY b Landsborough.....	7
L HUNT retired hurt.....	24
P FREWEN n.o.....	27
C WATTS n.o.....	10
Total 133. Extras 21. Bowling (overs/maidens/runs/wkts)	
L Laycock 4-0-0-14, T Landsborough 4-0-2-23, M Rhaman 4-0-1-21, A Breneton 4-0-0-22, M Conroy 4-0-0-46.	

City	
M CONROY c B Moore b C Mooney.....	10
A BRERETON c sub (B Mansfield) b B Ussher.....	0
K HANDES lbw C Mooney.....	0
T LANDBOROUGH c P Mooney b C Watts.....	4
L LAYCOCK r.o P Frewen.....	19
R BLACKWELL r.o B Moore.....	11
H LIETCH c H Ussher b D Morley.....	6
T WARENGA n.o.....	0
Total 70. Extras 9. Bowling (overs/maidens/runs/wkts)	
C Mooney 4-1-2-8, B Ussher 2-1-1-5, P Mooney 2-1-0-0-7, H Ussher 4-1-1-27, C Watts 4-0-1-15, D Morely 1-0-1-7.	

City v Walcha/Uralia 2nd Grade

Walcha/Uralia	
S RAFFERTY b J Clee.....	31
E BLOMFIED c L Stonestreet b P Gilbey.....	32
D BOYD s L Stonestreet b S Butler.....	31
N ENDACOTT c A Clee b J Clee.....	0
J SHERRIN b J Clee.....	0
W FLETCHER n.o.....	38
B MANSFIELD b J Clee.....	2
B HOY c M Bryard b P Gilbey.....	16
Total 155. Extras 7. Bowling (overs/maidens/runs/wkts)	
D Tillbrook 4-0-0-37, R Watson 2-0-0-23, P Gilbey 4-0-2-29, J Clee 4-1-4-12, S Butler 4-0-1-39, P Lye 2-0-0-15.	

City	
A HANSEN r.o B Mansfield.....	12
P LYE lbw J Sherrin.....	28
A CLEE lbw D Boyd.....	3
J RYAN c M Harper b E Blomfield.....	13
M BRYANT b Fletcher.....	13
P GILDOY c B Hoy b Fletcher.....	11
L STONESTREET b E Blomfield.....	9
S BUTLER n.o.....	1
D TILBROOK b E Blomfield.....	0
J CLEE n.o.....	2
Total 109. Extras 17. Bowling (overs/maidens/runs/wkts)	
M Harper 4-0-0-23, W Fletcher 4-0-2-13, J Sherrin 4-0-1-	

30, D Boyd 4-0-1-16, E Blomfield 4-0-3-19.

Walcha/Uralia Cricket Club won both their 2nd and 3rd Grade matches in the Armidale and District competitions when the opening round of the T20's was played at Peter Fenwicke Oval last Saturday. In third grade the homeside kicked off the double header batting first against Armidale City where they scored 133 runs for a loss of three wickets from their 20 overs.

Opener Dave Morley top scored with a game high 34 runs, Phil Frewen contributed 27, Lachie Hunt made 24 before he retired hurt while opener Ben Ussher and 'comeback kid' Chris Watts both scored 10 runs.

In reply City fell well short when they were dismissed for 70 runs in their 18th over after opener Cameron Mooney lead the bowling capturing two wickets for a cost of just eight runs off his four overs.

Other wicket takers were Ben Ussher, his son Hugo, Morley and Watts who all claim a scalp each.

Batting first in 2nd Grade Walcha/Uralia amassed 155 runs against City for the loss of seven wickets with middle order batsman Will Fletcher leading the way with an unbeaten 38 runs.

Openers Ed Blomfield 32 and Shannon Rafferty 31 both got starts as did Daniel Boyd 31 and Barry Hoy who was caught on the last ball of the runnings after reaching 16.

City fell 46 runs short in their run chase finishing at 8/109 off their 20 overs.

Best trundler for the home side was Blomfield with 3/19, Fletcher snared 2/13, whereas Jacob Sherrin and Daniel Boyd both took a wicket each. This Saturday Walcha/Uralia play Hillgrove at Harris Park in Armidale 3rd Grade at 12.45pm and 2nd Grade at 3.45pm.

Flippers

The Walcha Swimming Club finally got their 2023/24 season off and going last week despite the threatening weather forecast.

Membership numbers currently total 78 which includes 10 new members and 5 swimmers who have returned to the club after having taken time off.

Movers and shakers for week 1 were Lucas Eveleigh straight into Frogs, Grace Smith straight into Turtles, Addison Smith straight into Crocodiles, Benji Provost and Christina Fontanella Tadpoles to Frogs, Eliza Nivison and Nina Blomfield Frogs to Turtles, Connor Sweeney and Leo Blomfield Turtles to Crocodiles.

President Yolanda Mooney declared 'Swimmer of the Week' should go to all swimmers as everyone was extremely keen to get back in the water.

Registrations are still open and for more information please turn up at the pool after school on Tuesdays except during school holidays.

Ladies Bowls

Last Thursday the final of the Ivy Makeham Singles was played in which junior Sari Andrews played more consistently than her opponent to have a convincing 23-13 win over Lyn Burnell congratulations Sari.

A game of pairs was also played with Wendy Moore and Matt Andrews defeating Ellie Pullman and Esther Hunt.

Walcha had two teams entered in the Guyra Women's Triple Carnival last Tuesday with the team of Carmel Ryan, Lyn Burnell and Esther Hunt having a great day in winning the carnival and collecting the prize money on offer after they defeated both Ex-Services teams. The other team of Rosie Aitken, Sari Andrews and June Hayes had win over Guyra and lost the afternoon game against Glen Innes on the last end.

Social bowls this week and the following week is our Presentation and Christmas Party following bowls. Names must be in by Thursday 7th December for catering purposes and don't forget starting time is 9-00 for 9-30 start.



Positions Vacant

FABRICATION APPRENTICESHIP OPPORTUNITY

We would like to offer a position for an apprentice to join our team.

To be successful in this role you must:

- Be reliable and punctual
- Be keen and enthusiastic about the trade
- Great work ethic
- Team player
- Attention for detail
- Excellent communication and written skills

To apply please email a cover letter and your resume to enquiries@linmacengineering.com.au or drop it into us at 211N Pakington Street Walcha.

Wanted to Rent

House in the Walcha district by a local couple, from January for about 12 months while their house is being built. Please phone 0409 780 006.

Public Notices

Woolbrook and District Progress Association Inc.

WOOLBROOK CHRISTMAS GATHERING

Woolbrook AIF Hall

Wednesday 13 December - 5.30pm start

- BYOG and food. BBQ facilities available. Nibbles provided. Bring a side salad or dessert to share.
- Soft drinks, chocolates and candle lights for sale by Woolbrook Public School P&C. Cash only no eftpos facilities available.
- Christmas raffles will be run.
- Carols will be sung by the Woolbrook Public School students and a Community singalong.
- Santa will be making a visit. So remember 5.30 start, everyone welcome. See you there!

Woolbrook Church Service at 2.00pm this Sunday. Info Graham Barnes 677 2539.

Walcha Taxi offering day/night trips away for your next out of town function. 11 passengers. Bookings required. Phone 0436 131 008

CHRISTMAS SHOOT

Walcha Gun Club Sunday 10 December, 9.30am start. Licenced shooters welcome.

The Barber Shop will be closed this Thursday 7, Tuesday 12 and Wednesday 13 December.

Rotary



Rotary Club of Walcha

CHRISTMAS CAROLS

Tuesday 12th December

at McHattan Park

6pm Sausage sizzle – Free sausage sandwich and drink; steak sandwich \$10

7pm Carols and finish 8.30pm

Battery candles \$2 each; songbooks available and to be returned.

BYO chair

Garage sale

Garage Sale 60w Hill Street. All must go. Saturday 9 December, all day.

Meeting

Amaroo Local Aboriginal Land Council Notice of Resumed Annual General Meeting 2022/23

Notice is given of the Resumed Annual General Meeting 2022/23 of the Amaroo LALC.

DATE: 14 DECEMBER 2023

TIME: 12.00pm

VENUE: 36N Derby Str, Walcha NSW 2354

Agenda:

1. Welcome & minutes silence
2. Apologies
3. Completion of the 2023-2027 Board Election of Amaroo LALC
4. Meeting close

Please note: A voting member of the Amaroo LALC is only entitled to vote, nominate, accept a nomination or be elected to office in an election for Board members if the member has attended at least 2 meetings of the Amaroo LALC in the preceeding 12 months as a voting member.

For any enquiries, please contact Mr. Archie Tanna during business hours on 0428 611 909.

Authorised by: Sally Skyring, Registrar. Aboriginal Land Rights Act 1983(NSW) 4 December 2023.

The Registrar is authorised to call this meeting pursuant to clause 2 of part 1 of Schedule 3 to the *Aboriginal Land Rights Act 1983 (NSW)*.

Thank You

Gavin Noon and family would like to express thanks to all who attended Val's funeral and for the many cards, phone calls and messages that we received. Please accept this as our personal thank you.

Lost

CoCo – Chocolate Burmese Cat. Fell out from under car near Walcha Tyre Service 3 weeks ago. If you are looking after her or have seen her, please phone Janelle 0427 771 250. Reward offered.

For Sale

**** HAY – CHRISTMAS SPECIAL ****

Small bales of number one lucerne reduced to \$22, large round bales reduced to \$180.

Call George on 0427 018 493.

thumbs



With thanks to an amazing community for the support you have offered my Mum and Dad (Olive and Paddles) during a truly awful time. We feel so blessed to be a part of such a wonderful community.

To St Patricks school for their end of year play at the MPC. Well done.

To Steven at Mountain Motors/NRMA for his prompt call out response and on a Sunday as well. Thank you.

To the ladies at the Post Office who always go above and beyond with all our banking and postal needs. Your help is greatly appreciated.

To Bec Hoy for her dedication and care of our children in her dance group, and the beautiful end of year dance concert. Very enjoyable.

To Peter at the Post Office for finding my parcel, which I had addressed to the wrong address. Thank you.

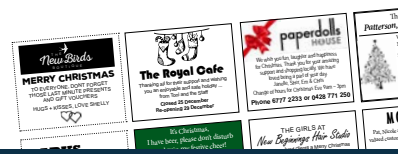
Contributions will be received in person, by phone or email and must be accompanied by your name and contact details. They will be printed at the discretion of the editor.

THE APSLEY Advocate Christmas Box Ads

Book your Christmas box to appear in the final two Advocates for 2023:
Wednesday 13 and 20 of December.

\$50 for one week or \$80 for two
(size 60mm w x 50mm h)

Call 6777 1111 or email wtc@walchatelecottage.com.au





New England Accounting & Taxation Services Pty Ltd

Specialising in:

- Accounting, Business & Taxation Services
- BAS & IAS Preparation & Lodgement
- Bookkeeping & Secretarial Services



Brendan Blake CPA

10W Hamilton St Walcha

Tel.: 02 6778 0054

Fax: 02 6778 0035

Email: ats@ozemail.com.au

New England Accounting & Taxation Services Pty Ltd is a CPA Practice



CURTIS

MOWERS & SMALL ENGINES

- Mowers • Ride-ons
- Pumps • Chainsaws
- Whipper snippers
- Chain sharpening
- Bar dressing

SELLING New 30 & 40 Tonne Petrol Hydraulic WOOD SPLITTERS

- Chainsaw chain • Pumps & Generators •

JAMES – 0488 020 762 (7 Days)



WALCHA LAW
SOLICITORS

Sophie Thomson | James Levingston

Conveyancing | Power of Attorneys
Wills | Estates | Traffic Offences

Local Firm - over 70yrs in the Community

02 6777 2066 info@walchalaw.com.au
walchalaw.com.au

INCORPORATING PATTERSON BYFIELD & BRYEN

Nick Moore

PLUMBING & EXCAVATION SERVICES

WALCHA & SURROUNDING AREAS



Highly qualified and experienced plumber
All aspects of Plumbing and Gas Fitting
Wood heater installation
Roofing and Guttering
Gold License No 59555C

Nick 0418 691 306

nickmoore203@yahoo.com.au

Katy 0422 034 660

Tree lopping
Tree removal
Truck & chipper
Bobcat
Post hole digger
Trencher
Woolshed cleaning
Stockyard cleaning



Scott Kermode

0427 100 889

TREETOP
services

treetopservices@bigpond.com

MOBILE-FIX AUTO+AIR

Mobile Repairer & Airconditioning Specialist

Licensed Vehicle Repairer
Lic No 46696 RTA Lic No AU22616

PATRICK STAGE – WALCHA

Mob. 0428 780 077 Ph. 6778 0595



A G W RURAL CONTRACTING

GPS Equipped boom spraying

Andrew Wauch 0427 549 748



Andrew: 0427 549 748

Toni: 0421 972 354

CHIROPRACTOR

K Samantha Goor

B.Sc. Anatomy (NSW) M Chiroprac (Macq)

Tuesday & Friday from 9.00am

6777 1340



CPC SPRAYING SERVICES

- Boom and Reel Spraying
- GPS Fitted 4WD Small Truck

Phone Peter 0404 471 105

church notices



ANGLICAN

Sunday Holy Communion 7.30am and

Family Service 10.00am

Nowendoc Service 2.30pm

Phone 6777 2543 or email:

walchaanglican@gmail.com

PRESBYTERIAN

Walcha Sunday 9.30am and Woolbrook

2pm, All welcome. Phone 6777 2539.

CATHOLIC

Sunday 10:00am Mass.

STORAGE CENTRE WALCHA

20' Containers available for rent \$35 pw + GST

Secure Undercover parking for cars,
vans etc \$15 pw +GST

ANGUS 0427 787 332

New England IT

ONSITE COMPUTER SERVICE + SALES

Tim Sutton 0414 874 523

SELF STORAGE

NORTH STREET – WALCHA

VARIOUS SIZED SHEDS

SECURITY FENCED

67773899 0428 653 307

SPLITZAIR WALCHA

- AIR CONDITIONING & ELECTRICAL
- Domestic & Commercial
- Split system specialists



Dave 0438 007 275

Lic. 182154c
Lic. AU42686

DISCLAIMER LETTERS TO THE EDITOR are submitted on the condition that The Walcha Telecottage as the publisher of The Apsley Advocate may edit and has the right to, and license third parties to reproduce in electronic form and communicate these letters. They are published at the discretion of the Editor and Board. The Apsley Advocate is printed by The Walcha Telecottage, PO Box 116 Walcha NSW 2354. Phone 6777 1111 Fax 6777 1112. The Walcha Technology Co Operative Limited, the Editor and Staff of this Newspaper have published any article here-in in good faith and bear no responsibility in respect to the accuracy of the information contained in such article. Any person or persons publishing material in this Newspaper do so in the knowledge that they shall personally accept any responsibility for the accuracy and other correctness of such articles and also accept full responsibility for the legal consequences if it be found that the article contains any inaccuracies in the contents of any such articles. **DEADLINE MONDAY 4.30PM** Editor: Anthea Macpherson. Advertising and Sport: Rosalie Gibson, Megan Scrivener, Emily Scrivener and Joscisca Matapakia.

Marchant

BROS. LTD. Est. 2000

WATER CARTING

DELIVERING
7 DAYS
A WEEK

WALCHA COUNCIL
CERTIFIED DOMESTIC
WATER CARTER
10,000 litre tank



A FULL RANGE OF AFFORDABLE TRANSPORT & EARTHMOVING
Dam construction/maintenance, stick raking, road building,
site prep, pipe laying and all timber work.

Check out our website for the full range of machinery,
attachments and services available

FIREWOOD AVAILABLE

Earthmoving and Heavy Haulage Transport
Jason 0427 490 487

02 6777 2024 marchantbros@bigpond.com
www.marchantbros.com.au

BOWLING & RECREATION CLUB

Mon – Wed 4.00pm – Close

Thursday 7 12.00pm – Close

Ladies bowls 9.00am for 10.00am
Social bowls 1.00pm

Friday 8 2.00pm – Close

2.00pm Bingo

6.00pm Bistro

- Sweet and Sour Thai Beef Salad
- Grilled Salmon with Berry Salad
- Pork Sausages with Caramelised Onion
- Normal menu available, takeaway and delicious desserts.

6.00pm Free Bingo

6.00pm Tickets for raffles

MEAT & VEG TRAYS

7.00pm Raffles & Members Draw

Saturday 9 11.00am – Close

THE CLUB IS CLOSED FROM
5PM DUE TO A PRIVATE
FUNCTION

Sunday 10 11.00am – Close

12.00pm Bistro open. Children
U/10 kids meal free with an adult
order.

12.00pm Meat, fruit and veg
raffles. Drawn at 1pm

12-2pm \$5 schooners

Kids
Christmas
party 24th
December
from 4pm

\$5
SCHOONERS
TUES & WED
5-6PM

MEMBERS
DRAW
\$300

YOU MUST BE A MEMBER FOR
2023/2024 TO BE ELIGIBLE TO WIN

*No poker this week due
to the function, next
game 23rd December*

Do you live in Walcha Shire? If so you MUST be a member to enter the Club
Social Membership \$15 – Full Membership \$105. PHONE 6777 2077

FOR ALL YOUR EARTHWORKS
TRANSPORT AND ELECTRICAL NEEDS

ALL ASPECTS OF RURAL, COMMERCIAL & CIVIL WORKS



- Freight & Transport • Machinery Float • Stick Raking
- Road construction and maintenance • Trenching
- General Earthworks • Drilling • Mulching
- Dam maintenance and construction
- Erosion Control • Site Preparation • Electrical Works

Ian Notley 04188 29188 • Mark Notley 0422 637 686

www.eteservices.com.au



Wayne Hoy: 0427 281 060
Matthew Hoy: 0427 322 640
Aaron Bullen: 0409 776 340

**SPRAYING
SOWING**

**EXCAVATING
EARTHMOVING**

GPS & Auto Steer Equipped

- Komatsu PC300 Excavator
- Cat 324 Excavator
- Cat D6N Dozer
- 2000ltr Quikspray Trailers
- Casotti's
- 4 x4 Tip Truck
- 4x4 Trucks & Boomsprays
Full auto Rate Control
GPS & Autosteer
- 4x4 Tractors GPS Equipped
20 & 24 disc Williams Seeders
- Fencing & Rural Contracting