

THE APSLEY Advocate

CIRCULATION 1810 – P 02 6777 1111 F 02 6777 1112 wtc@walchatelecottage.com.au walchatelecottage.com.au

15 November 2023

Amcal+

**Christmas
VIP DAY
16th November**

25% off Gifting lines
Lucky Shopper Prizes
Drinks & Refreshments
Free Gift Wrapping
Kings Pharmacy



telecottage
WALCHA

**Design, print
and secretarial
services**

- Photocopying
- Laminating
- Business Cards
- Stationery
- Invoice/receipt books
- Labels
- Sale Catalogues
- Brochures
- Resumes
- Cards
- Stamps
and more.

Phone 6777 1111

wtc@walchatelecottage.com.au

New attractions at Motorcycle Rally this year

The Walcha Motorcycle Rally is going from strength to strength with hundreds of visitors packing their bags to come to our town this weekend.

A jam packed program has been put together by the team at the Walcha Visitors' Centre with something for locals and visitors alike.

Riders will start to arrive on Thursday, with live music by *Berlyn* at the Showground that evening.

Friday and Saturday from 10am – 4pm at the Showground there will be an exciting new feature which will be popular with locals, an Enduro X course. Set up by the Walcha Hard Enduro Club the track above the rodeo ring will cater for all levels of riders and kids. "We will have coaches there to help with bike techniques," Glen O'Brien said. All you need to do is bring your bike, kit and appropriate safety gear. You can turn up and register on the day. The Club will also be doing demonstrations and time trials.

While you have your bike at the Showground, why not try your luck in the dirt bike barrel racing running from 9am – 3pm on Saturday.

Or for the younger children try the new Strider Bike Races which will be held on Friday at 4:30pm and the Saturday at 12pm. It will be a chance for future riders to get competitive and take out the podium for fastest micro rider in Walcha!

The racing, which is for under 6's, will be a short course held within the showground main ring on grass. Helmets are required and there will be some bikes available for those without, but you are welcome to bring your own.

The Rally Street procession will be a must-see on Saturday. The procession will depart the showground at 11am and travel via Darjeeling Road, down Fitzroy Street to Middle Street and return to the showground.

While you are in town for the procession, you can spend time at the Walcha Farmers' Market between 10am and 12 noon, which will also feature



Come along and try the Enduro X course at the Walcha Showground this Friday and Saturday.



a vintage and classic car display near the markets.

This year the event falls on Australasian Women's Ride Day (AWRD), with a few organised activities for the women riders, including; women riders leading the street procession, fronted by Niki Zak, the world's quickest and fastest female ¼ mile drag racer. Niki will also attend the showground both days with her drag bike, display and merchandise.

At the showground there will be a great range of delicious food stalls to keep you satisfied and a variety of trade stalls and exhibitors.

Join in the fun by grabbing your local spectator tickets online or at the Council Office. The locals discounted ticket is for Walcha LGA ratepayers only, who reside in the 2354 postcode, and allows access to the showground from Thursday 16 to Saturday 18 November.

Woody weeds? Need expert advice?



WVS has the solution for you.
Talk to our team today to find out
the best products for your need.

WVS
WALCHA VETERINARY SUPPLIES

6777 2588
6 Aberaldie Road, Walcha
www.wvs.com.au



OK EARTHMOVING

Specialising in road construction & maintenance

• Stickraking • Dam building • Erosion works



Bulldozers • Excavator • Tip-truck • Vibrating Roller

PH 6777 7430 FAX 6777 7448

PETER O'KEEFE: 0429 944 821

Quota Xmas Markets



Saturday 25 November at McHattan Park. 8am - 2pm

40 stalls - large variety - Christmas shopping



- Onsite Sharpening, bring your knives, scissors and garden tools
- Supporting local organisations such as Walcha Youth Group
- Bacon & egg rolls, tea, coffee, treats and a sausage sizzle

Contact for stalls or info Pam Makeham: 0429 772 419

WALCHA TAXI SERVICE



Walcha Taxi would like to introduce our new Taxi, TC1418, a lovely 12 SEATER TOYOTA HIACE vehicle

Having two taxis will enable us to offer **day/night trips** away to places such as Uralla, Armidale and Tamworth, or even trips to Niangla for their Prawn and Chicken Night, while still being able to continue to supply our normal service to the Walcha community.

- 11 passengers
- Booking will be required for these adventures

Phone Julie for your next out of town function 0436 131 008

around the traps



By SIMON NEWTON

The district has changed colour overnight with last weeks rain the perfect backup to previous falls. Falls of between 40-100mm were recorded around the district and areas throughout the northwest and the tablelands getting under general falls of 40-80mm. The grass is starting to grow and if we can land a few more storms then we will be away, the weather is just like spring has finally come. The big news is that the forecasters are now saying we will head into a possible La Nina cycle during 2024. No doubt we have a hot and dry summer ahead of us, but it seems everyone has a little confidence back.

Last week the RBA lifted the interest rate once again with all four major banks passing it straight onto mortgage holders. The cost of living is really biting hard and for anyone with a mortgage that Australian dream of owning your own home seems to be further slipping away from our grasp. The hard pill to swallow is that these interest rate rises are passed onto consumers directly and then we hear the banks announcing their record multibillion dollar profits for the year. It's just really another kick in the teeth and furthermore the whispers of fuel hitting the \$3 litre mark by Christmas just seems outrageous. Something needs to be done and I'm sure everyone is seeing it in the cost of your weekly grocery shop lately, wow something is out of whack.

The EYCI has kicked 50c/kg in a week on the back of the widespread rain events with it now sitting back over 400c/kg. The EYCI sits a whopping 611c/kg behind the same time as last year, but it looks like we have seen the bottom, and it will continue to rise if we see further rainfall. Restockers are back in the market now knowing that it still can rain regardless of how much the news coverage of an El Nino spooked everyone. Don't get me wrong, a fortnight of hot dry weather will suck the confidence straight out again, worst part is the market was better in 2019 at the height of the actual drought compared to the last month.

The annual Walcha Motorcycle Rally will be held this weekend and it's another great town event that shows off our wonderful community and pristine countryside. Walcha sits right on two of Australia best motorcycle rides and no matter what weekend it is throughout the year you can always bet the bike riders will be passing through or stopping over for a night in Walcha. Be sure to head to the showground and support this local community event.

1600 cattle were yarded in Tamworth on Monday with demand for all livestock up on the previous week. Demand for restocking and feedlot cattle were up with a quality run of EU Angus steers selling to a top of 342c/kg for 292kg, up 60-70c/kg on the previous week. The best of the heifer portion sold to 200c/kg for 270kg of Angus heifer, while feeder weight heifers topped at 216c/kg for 417kg. Feeder steers sold to a top of 262c/kg for Angus steers weighing 462kg while heavy domestic kill cattle topped at 248c/kg. Cows jumped 20c/kg to top at 212c/kg with some sales grossing more than \$1400 for heavy fat cows. 2000 lambs and 1700 sheep went under the hammer in Tamworth on Monday with well finished young lambs quoted up to \$4-7 per head dearer topping at \$120 for sucker lambs, old season trade weight made from \$70-100hd while extra heavy lambs topped at \$140. Dearer trends for well finished sheep with good conditions top at \$61 for heavy xb ewes while most of the mutton made from \$20-40 per head. A run of advertised restocking 1st x ewe lambs topped at \$71 to head back to the paddock as future breeding ewes.

Caps for Cancer Research

Betts Transport were ecstatic with the support they received from the sale of their limited edition caps this year, which allowed them to donate a massive \$17,000. These profits were donated to Ovarian and Breast Cancer Research, with each Foundation receiving \$8,500. Organiser Deb Clare is pictured (inset) with Poppy Betts with the framed certificates they received thanking them for the generous donation. "We had no idea it would take off as well as it did, we sold over 100 caps on the first day," Deb said.

They are now planning their next fundraiser with the proceeds from the 2024 cap sales going to Make a Wish Foundation and Prostate Cancer. The Make a Wish Foundation caps will be in bright colours and feature the photo above of Walcha Preschool children under the brim. The children were so excited to have the big truck come and visit last week for their photo shoot! The Prostate Foundation caps will have an image of the Bev Betts Rose Garden with the Betts Transport truck in the background.

Keep an eye out for these limited edition caps which will be on sale around Walcha in the New Year, or available from the Betts Transport office for \$50 each.



thumbs



- 👉 To an amazing day out and picnic at Mummel Gulf State Forest with the Walcha Community Care. To Sue and Meg for their organisation of the landscape art day – many thanks.
- 👉 To Jane, the two school boys, Council workers and the Vet Clinic staff for helping me with an injured bird.
- 👉 To the Lions Club for having a cool room for hire – such a great asset in our town.
- 👉 To the same producers that consistently have loose stock on the road. It is so dangerous and not that hard to maintain/fix boundary fences.

Contributions will be received in person, by phone or email and must be accompanied by your name and contact details. They will be printed at the discretion of the editor.

Nutrien  **Boulton's**

Stock and Property Watch

www.nutrienharcourts.com.au



SOLID BRICK FAMILY HOME

Lovely brick and tile home set on a flat block.

- Open plan kitchen/dining
- Spacious lounge
- Three bedrooms, all of a generous size with built-ins
- Well designed bathroom, easy care layout with a separate toilet
- Laundry with second toilet
- Large sunroom with new flooring, perfect sunny area for cold winter days
- Reverse cycle and wood heating ducted through a radiator system to each room
- Cement drive, double garage, double carport, workshop, tank and solar panels
- Short stroll to local Central School

Brick homes rarely come on the market in Walcha – so now is your chance to secure yours.

Enquiries to Peta Carter: 0407 350 781



\$550,000

3 1 4



45ft flat top • 45ft single deck cattle float • 26mtr B Double
19mtr mini B Double • Low Loader available for hire



BRIAN
Smith
TIMBER
TRANSPORT

Call us for
your large
Transport
needs

WALCHA
02 67772126

Bonnie Smith 0429 772 077
Brian Smith 0427 780 216



EVE FLOWERS

*Gorgeous fresh flowers
delivered to Walcha, Monday to Friday*

*A lovely seasonal selection direct from our farm and
fellow Australian growers*

*Specialising in unique and sustainable floristry
for weddings, events and funerals.*

Florist open 6 days
Phone 0409 566 099
or order online at eveflowers.com.au
45 Bridge St Uralla 2358

Youth Gym project

Walcha Council have partnered with local young people to improve their access to and strengthen their ability to take full advantage of the state-of-the-art Walcha Community Gymnasium.

The Walcha Youth Gym Project, is a NSW Government, Department of Communities & Justice, Youth Opportunities Project. It provided funding for 20 young people, aged 16 – 24 years, to participate in six months of small group training sessions with qualified personal trainers, covering twelve different topics selected by the young people in consultation with the professionals. The projects overall goal is to enable young people to make full use of the Walcha Community Gym facility to meet their personal health and fitness goals.

The two groups worked through topics such as gym etiquette, goal setting, nutrition, hydration, mobility, stretching, form, technique, rest and recover, different types of exercise, mental health, benefits of exercise, staying motivated and disciplined. One of the teen participants, Thomas Bullen commented, "We did some work on goal setting which helped me put my goals in perspective and what I needed to do to be able to achieve these goals, which I will continue to use even after the completion of this project."



The group were given instruction by two trainers, Ben Pratt from BDP Health & Fitness and Keith Johnson from Armidale PCYC, who taught six sessions each throughout program, giving the participants different information, skills and perspectives. Kirra-Lee Murphy commented that "It was good being able to come to the gym with other people who have only just started and not feel anxious about coming to the gym. We learnt how to do basic lifts properly so we don't get injured."

Participant, Lucy Morris commented that she "thoroughly enjoyed the program ... The theory at the start before the exercises took place was really detailed and he explained it very well. This program definitely has given me the confidence to go to the gym and work on goals that I didn't think I'd be able to do. I look forward to the sessions fortnightly and it gives me more exercises to use confidently in the gym."

The group enjoyed a celebration event at the end of the project, where they reflected on their goals and achievements as a group. Participants who completed the program will be awarded with a further 12 months of membership at the Walcha Gym, and hope to fine tune their health and wellbeing with the further use of this high-quality facility and all of its equipment and space. Participants will use this training to contribute to the wider community by displaying good gym etiquette, providing a role model to other gym users, and support other young people who are new to the gym. Another participant commented "I hope that our presence in the gym, and with our training in how to make good use of the facility, we can help other young people and new users to feel comfortable in the gym too".

On behalf of the group, Thomas would like to thank Cassie McKenna and the Walcha Council for getting this project up and running for the youth.

Hannah reached finals of State Debating



The ten NSW education regions gathered at Collaroy Centre for three days of intense debating competition last week with the standard being exceptional. These teams were selected from trials which were held throughout the state. The New England Region team was chosen in Tamworth:

1. Resanti (Sir Henry Parkes Memorial PS, Tenterfield)
2. Ryka (Ben Venue PS, Armidale)/Hannah Swain (Walcha Central School)
3. Ha Na (Timbumburi PS)
4. Ryka (Ben Venue PS, Armidale)/Hannah Swain (Walcha Central School)

The girls met once for two hours via Zoom before travelling to the camp. The newly formed team got to know each other on the Monday, whilst completing three debates. By the end of those debates after trialling all the positions the girls settled into the above

order. Hannah and Ryka shared the roles of second and fourth speaker. They were so in tune with each other you could not tell when one was reading the other's arguments!

By the end of the five rounds the New England team had won four out of five debates and were the highest ranked team in the competition. They earned themselves a place in the semi-finals against Illawarra/ Southeast. After a very hard fought battle in front of three adjudicators, the result went to Illawarra/ Southeast. Although disappointed, the girls go away with the knowledge they beat both teams that ended up in the final, North Sydney and Illawarra/Southeast, during the competition. They had a wonderful few days improving on their debating skills and making new friends with like-minded kids. They all look forward to many more opportunities like this one in their talented futures.

Congratulations to Tracey Worth, Walcha Central School Assistant Principal on being chosen as New England debating team coach for the State Championships. Well done for supporting these children with this success.

Service for those grieving

For many in our community 2023 has been a year consistently punctuated with grief.

In recognition of this, the Anglican and Presbyterian Churches are holding a special service for those who are grieving to come and remember the loved ones they have lost whenever that may have been.

The service will be held next Wednesday 22 November from 6pm to 6:45pm at Walcha Anglican Church.

We will share afternoon tea, with the service itself having times of prayer, bible readings and songs of reflection as well as a short bible reflection.

People are encouraged, if they would like, to bring a photo of the person or people they are there to remember as well as having the opportunity to come forward and light a candle in memory of them.

All enquiries can be made to Reverend Neil Hunt at the Anglican



Christmas

Offer!!



**BROOKLYN
QUARRY**

\$25/tn

40mm

roadbase

Its time to re-sheet that driveway or cattle yard! Take advantage of our

LOCALS CHRISTMAS OFFER!

On offer : 15th Nov - 15th Dec!

**** conditions apply***

 **SCOTT@BROOKLYNQUARRY.COM.AU**

 **0434 011 570**

 **1643 OXLEY HWY, WALCHA RD. NSW**
(BY APPOINTMENT ONLY)

 **WWW.BROOKLYNQUARRY.COM.AU**



RayWhite

AUCTION

185W Hill Street, Walcha

- 4.04* ha/10*acres
- Freshly painted 3 bedroom home
- 2 bay lockup garage, garden shed
- Perfect opportunity to down size or start your real estate adventure
- Potential future subdivision

3 1 2

Auction

Thursday 7 December
6pm
Tamworth Town Hall
View
Saturday, 1:00 - 1:30

Baden Chaffey

0488 697 416
baden.chaffey@raywhite.com

WHY WAIT?

Ray White Tamworth | 02 6766 14

raywhitetamworth.com



Talk about sobering

From John Heffernan

Over the last month I've presented several quality long-term empirical studies into wind energy. But this one is the best so far, a very impressive work with definite warnings for Australia. The study, by Professor Hughes at the University of Edinburgh's School of Economics, investigates actual capital and operating costs for the bulk of onshore and offshore wind farms built in the UK between 2002 and 2019. It totally debunks widespread claims that the past two decades have seen falls in the costs of wind energy. Based on over 350 wind farms – a far larger sample than any previous research – the study uses exacting statistical and econometric methods to produce a voluminous report of at least 16,000 words plus supporting appendices, and then warns with apposite Scottish brevity that: "The findings are complex but sobering."

Hughes makes it clear that not only have costs of onshore and offshore wind generation not fallen significantly over the last two decades, but that there is little prospect of them doing so in the next five or even ten years. Indeed, far from falling, actual capital costs for new wind farms increased substantially from 2002 to 2015, while reports that costs for new offshore projects might fall by 2025 are "consistently unreliable and incomplete".

The story for operating costs is gloomier, with very strong empirical evidence of a powerful rising trend in costs per MW of wind farm capacity. Onshore projects in the UK have seen an average yearly cost increase of 4.4%, while offshore wind farms increased by 5.5%, plus large hikes for working at depths of 10 – 30 metres or greater than 30 metres. Moreover, things have been made worse by serious reliability problems with new generation turbines suffering rapid performance declines with age, creating a lethal mix of higher maintenance costs alongside much lower yields.

This has focused attention on the economic life of wind farms rather than physical life, seriously shaking confidence in the financial security of the wind energy game. Most wind turbines claim a physical life of 25 – 30 years, but almost all are actually being decommissioned before 25 years, and many before the age of 20. "This means that initial capital cost must be recovered over 15 or 20 years rather than 25 or 30 years." That is creating a super crisis for the Poms whereby those who are financing wind will almost certainly need to be bailed out. The scale of that bailout will be large: "about £30 billion is at risk in the UK wind sector alone", the study states, "with significantly more in Germany, the Netherlands and Denmark." As I said, sobering, especially since this comes from a previous senior advisor on energy and environmental policy at the World Bank.

The facts spell it out. Wind is a highly capital-intensive energy source, has a short economic life due to high operating costs, doesn't work in load-following mode, hides costs behind subsidies, contractual games and system integration charges, and now a great many of its whizz-bang new generation turbines manifest serious performance issues with premature ageing. As for Offshore projects, don't even think about them; they're a cauldron of real nightmare scenarios. No wonder "the fundamental costs of wind generation", as Hughes states, "are rising over time and seem likely to continue to rise for years into the future. This has important implications for the role of wind energy in any politically and economically sustainable low-carbon agenda."

Australia should take on board this invaluable free lesson from the UK and elsewhere. For more details visit the Voice for Walcha website.

Annual Careers Expo

On Wednesday 8 November, Walcha Central School held their annual Careers Expo. Students from Years 3 – 10 attended and were all very interested in talking to businesses and organisations regarding future employment and training.

The Expo was funded by the Rural and Remote Careers Initiative and Walcha Central would like to thank the following businesses and organisations for attending: TAFE NSW, Tamworth Community College, Jobs Australia, Walcha Vet Clinic, Walcha Council, Nutrien Boulton's, NAB, New England Community College – Educational Pathways Program SBAT support officers – Alison Dundon and Mel Abra, Educational Pathways Program Head Teacher and support officer, Walcha GP Clinic and HVTC.

Organisations and businesses who would like to be involved in the 2024 Careers Expo are invited to contact Emma Ireland on 6777 2777.

Pictured below are the 2023 Career Expo participants. Far right: Molly and Ella talking to representatives from Tamworth Community College.



St Patrick's Transition Graduation



St Patrick's Transition students getting ready for their graduation ceremony

Last Friday, St Patrick's Primary School celebrated the graduation of their Transition students who are now ready to begin kindergarten in 2024. The Transition program helps prepare young children for their first year of school, ensuring that they have the skills and confidence they need to succeed.

The graduation ceremony was a wonderful celebration of the hard work and dedication of these young learners. Parents, teachers, and students gathered together to mark this important milestone in their educational journey. The students received certificates and awards for their achievements, and there were plenty of smiles all around.

The Transition program is designed to help children develop the skills they need to succeed in kindergarten and beyond. It focuses on

building strong foundations in literacy, numeracy, and social skills, as well as helping children to develop their creativity and problem-solving abilities. The program is tailored to the needs of each individual child, so that they can learn at their own pace and in their own way.

A big thank you goes out to Mrs Hoy, Mrs Rizzi and Mrs Healey who led the program over the last three months. As we congratulate the Transition students on their graduation, we also look forward to welcoming them to kindergarten in 2024. We are confident that they are well-prepared and ready to take on the challenges and opportunities that lie ahead. We wish them all the best for a bright and successful future.

Pitt Son's REAL ESTATE & LIVESTOCK

SAM PAYNE 0428 667 404 | ANDREW BLOMFIELD 0428 667 402
RON VINCENT 0427 775 821 | TROY DAVEY 0427 157 557

FOR LATEST
UPDATES

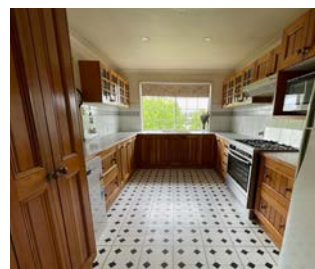


6777 2000 | www.pittsons.com.au

FAVOURERED AREA OF TOWN



- Four bedrooms all with built-ins
- Spacious lounge room with wood fire
- Kitchen with great views and large gas stove
- Separate dining room
- Large, very private entertaining area
- Small front verandah with great views over town



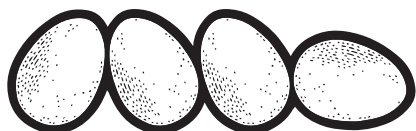
This home has a very private feel and in a great area of town

\$500,000

MARKETS THIS SAT!!

Join us

FOR AN ARRAY OF
SEASONAL PRODUCE,
FRESH COFFEE,
SWEETS & PASTRIES,
BACON & EGG ROLLS,
PLANTS AND TREES
PLUS MUCH MORE!!!



GOT ANY **EXTRA** PRODUCE?*

BRING ALONG YOUR
HOME-MADE CONDIMENTS,
BAKING, FRESH PRODUCE,
PLANTS, EGGS AND SO ON TO
THE COMMUNITY STALL WE CAN
SELL THEM ON YOUR BEHALF

* SEE TERMS AND CONDITIONS ONLINE



NEW STALLHOLDERS WELCOME
WALCHAFARMERSMARKET.ORG.AU

what's the goss

with AJ Cross



Sad to hear former Walcha resident and 'Wyohbie' grazer Jimmy Cross left this world earlier in the week. It's been a while since Jim, along with his late wife Mary-Lou, left Walcha and he has been living at Smiths Lake in the Forster area during recent times. Jim was 70 years old. Condolences to all family members and his many friends. May James Joseph Cross Rest in Peace.

...

Former Kentucky cricketer Preston Boyd was 'pretty surprised' when he was selected in the Tamworth Connolly Cup team to play Gunnedah recently. The 16 year old contributed to Tamworth's 90 run win when he took 2/13 after opening the bowling in the second innings. Playing for Bective East Second Grade earlier in the season he snared 5/8 off six overs against West Tamworth, which no doubt helped elevate Preston into the club's First Grade side.

...

The Boyd family have a 'fair' bloodline when it comes to cricket with Preston's grandfather, Peter 'Duke' Boyd, awarded the ER Brazel Memorial Walcha Cricketer of the Year on six occasions between 1982 and 2007. Preston's father Michael is playing for South Tamworth minor grades and hit 122 runs against Old Boys recently.

...

Still on cricket I certainly feel for 2013/14 Walcha Cricketer of the Year Jay Grills who has commenced this season with four consecutive ducks. Back at the start of the 2000/01 season I had a run of four 0's, two golden, one silver and a seventh baller. Certainly not much fun but I finally scored in Round Five pushing a single off Colts medium pacer Chris Robson. Stick with it Jay.

...

Anyone who didn't see the performance of Aussie allrounder Glenn Maxwell at the Cricket World Cup last week where he hit unbeaten 201 against Afghanistan missed out on one, if not the best, O.D.I's of all time. Chasing 291 runs, Australia were in all sorts of strife at 7/91 before Maxwell cut loose smashing ten 6's and twenty one 4's bringing up his double ton with a 6 which was also the winning runs. Freakish really considering he was batting with cramps in both legs late in his dig.

...

Local lawn bowler June Hayes competed in the Regional Zone 3 play offs at Lightning Ridge late last week and although she didn't win a match thoroughly enjoyed the experience. On Friday June was defeated 25 - 14 and 25 - 16 which took 51 ends and June reckoned she had just about had enough by the end of the day. When June received a forfeit on Saturday she set sail for home.

...

While drawing horses for the Melbourne Cup at the Bowling Club last week David Garth Clare pointed out to sweep organiser Jo Wicks she was using the field for 'The Big Dance' in Sydney not the Melbourne Cup. Don't worry Jo, last year I did exactly the same thing while conducting a sweep at the Tennis Club. Luckily Vicki McIvor came to my rescue just in time.

...

Veteran sporting enthusiast Max Holstien had his own slight hiccup with the Melbourne Cup last week when he was sitting at home well after start time of 3.00pm wondering why the 'Race that Stops the Nation' hadn't appeared on his TV. Simple really - Max had his television tuned into the wrong station.

...

The Walcha Rugby Union AGM will be held at the Rams Club house today, Wednesday 15 November from 6pm. All players and supporters are welcome to attend, especially anyone who wants to be involved with the Club next season.

...

Best of luck to new Walcha Pool manager Petrina Martin when she commences her first 'Head Honcho' role later in the week. Yesterday morning according to the pool temperature monitor the water was running at 24°C and with the next couple of hot days forecast the water should be even warmer when the pool opens on Friday.



Tennis

Round 5 of the Spring Comp was played out on Tuesday 7 November under clear skies.

Purcell: M Lockyer, C Bruce, A Blomfield and P Tape defeated Bolt: H Thomson, R Bagnall, K Smith and M Luchich 33 to 19.

Ebden: D Sweeney, C Ireland, S Blake and R Mathews defeated Popyrin: E Blomfield, M Ireland, B Kommeran and T Tape 29 to 27 in a cliff hanger.

DeMinaur: D A Locke, B Hoy (floating for D Clark), G Wall and S Ireland defeated Millman: S Payne (floating for Todd Whillock), P O'Brien, A Barillaro and J Burgess 29 to 23 in another close battle.

There was a lot of great tennis and laughter on the night. Thanks to our floaters S Blake, B Hoy and S Payne. Thanks to Pip O'Brien and Hyde Thomson who ran the Junior Tennis Coaching on the 11th. The next Club meeting will be on Monday 11 December and all members are welcome to attend. See you all at the net soon.

Bowls

Dads Army: Two games of Triples were played on Thursday afternoon with two close results.

The games were delayed after the 'heavens' opened as we were heading out to play. After a half hour wait we commenced playing, although the greens were a bit damp.

In the first game Mick Bullen, Warwick Hogan and Gordon Bird defeated Matt Andrews, Peter Hayes and John Watts 10 – 9. John McCormack and Tony Asmus, who played twice, were defeated 11 – 9 by Neil Dark, Brian Goodwin and Geoff Salt.

No chooks were played for, but Neil Dark won the raffle.

Twilight was a complete wash out when a big storm hit prior to start time.

Ladies Bowls

Last week Lyn Burnell played Ellie Pullen in the Ivy Makeham Memorial Trophy Singles and won 25 – 8, while Rosie Aitken played Margaret Tickle and won in a very close game 16 – 12.

The draw for 16 November is Lyn Burnell v's Rosie Aitken – marker June Hayes, Esther Hunt v's Carmel Ryan – marker Pam Makeham and Janice Rizzi v's Wendy Moore – marker Marg Tickle.

June Hayes represented us in the Regional Senior Singles which was played in Lightning Ridge last week. June lost all her games which she said were very enjoyable and everyone was friendly. She was pleased she had the opportunity to play.

Social Bowls will be on for those not playing in the Ivy Makeham Singles.

The monthly meeting will be held tomorrow commencing 1.00pm in the Club House.

Wednesday Golf

We played stroke, putting and the monthly mug last Wednesday for the New Birds trophy.

Our winner was Alison Cameron with a 70 nett, counting out Ark Street also with a 70 nett.

Sweepstakes were won by Vicki Heffernan with 72 nett.

NTP on Hole 3 was Sally McCormack and Polly Locke took out the NTP on Hole 16. Putting was won by Ark Street with 25 putts.

Monthly mugs were won by Alison Cameron in Division 1,

Ark Street Division 2 and Marg Higgins Division 3.

Today we are playing Stableford for Barb Mulligan's trophy.

At the 19th

Club Captain Willy Brennan celebrated his 67th birthday in style when he won the monthly stroke medal round last Sunday, after carding a 69 nett and in doing so collected a trophy donated by Vicki Heffernan. He also took out the scratch section of the event with a 10 over par 80, but only after counting out Lee Fletcher also on 80.

B Grade went to Owen Presnell on 73 nett, whereas Club President Allan Green handed in the best C Grade score of 72 nett.

Long drives sponsored by Tony 'Backhand Larry' Asmus were belted by Jamie Bowden (A), Owen Presnell (B) and Andrew Robertson (C).

Sharpest shooters at the pins were Col Berry (3 and 9), Ed Churchill (16) and Alex Gill (18).

The Putting competition went to Lee Fletcher after he engaged his flat stick on 25 occasions, while the coveted 'Pink Shirt' for most putts was 'eagerly' accepted by club Life Member Margaret Davidson after she registered 35 jabs.

Last Saturday Heffernan compiled 15 stableford points to win the weekly 9-hole competition after sneaking home by a point from runner-up Neil Dark on 14 points.

This Sunday is the concluding round of the Patrons (Col Berry and Margaret Davidson) trophy where Allan Green currently leads the way on 37 points, closely followed by Vicki Heffernan and Barry Hoad both on 36 points.

Robert 'Crichton' Barr is in charge of supplying the prize on Sunday.

Cricket

Easts v Walcha/Urala

Walcha/Urala

J Grills c Foster, b Relf	0
E Blomfield b Relf	5
S Rafferty c Ligange, b Relf	0
D Boyd c Green, b Swilks	21
N Endacott lbw, b Foster	18
G Youll b Swilks	0
P Mooney c Harris, b Foster	1
D Sherrin b Ligange	1
P Frewen c Harris, b Ligange	12
M Harper c Foster, b Ligange	5
C Mooney n.o	0
Total 77. Bowling (overs/maidens/runs/wkts)	
E Relf 4,0,3,24. B Swilks 5,0,2,14. M Foster 6,1,2,6. S Ligange 6,2,1,3,30.	

Easts

R Simpson c Blomfield, b Harper	0
M Moran c Grills, b Harper	12
C Foster n.o	28
M Eichorn r.o	11
M Harris b Sherrin	6
J Simpson n.o	18

Total 82. Bowling (overs/maidens/runs/wkts)

M Harper 5,0,2,18. P Mooney 4,0,0,12. P Frewen 4,0,0,19. J Grills 4,2,0,0,20. J Sherrin 1,0,1,12.

Due to a lack of playing personnel Walcha/Urala Cricket Club were only able to field a Second Grade Team last Saturday and were forced to forfeit their Armidale and District Third Grade match.

Batting first at Lambert Park after losing the toss the visitors could only muster 77 runs against Easts where

Daniel Boyd 21, Nick Endacott 18 and Phil Frewen 12 were the only batsmen to reach double figures during Walcha/Urala's 21 and a bit over stint at the batting crease.

The visitors didn't get off to the greatest of starts after opener Jay Grills was dismissed for his fourth successive duck this season in Eric Relf's opening over, only to be followed back to the hut by Shannon Rafferty the very next delivery.

Number four batter Boyd faced the hat trick ball which bounced twice before he belted it to the boundary.

Easts passed their assignment within 19 overs for a loss of four wickets.

Opener Matt Harper captured 2/18 off his five overs while the only other wicket taker was Jacob Sherrin who snared a wicket with his first delivery.

This Saturday Second Grade play Ex-Services at Harris Park and Third Grade are up against TAS at TAS.

Intermittent stoppages this Saturday

Walcha residents are advised of changed traffic conditions on the Oxley Highway on Saturday for the Walcha Motorcycle Rally.

There will be intermittent stoppages at the junction of Oxley Highway and Derby Street from 11.00am to 11.15am Saturday 18 November for the motorcycle procession.

Motorists can expect short delays and are advised to follow event signage directions and traffic control.





Funeral Notice

NOON; Valerie Joan

7th November 2023

Beloved wife of Gavin Noon.
Loving mother of Maria Orr, Louise Poole,
Michael Noon, Therese Ryan and
Nicole Newman.
Much loved mother-in-law, grandmother and
great-grandmother to her family.

Aged 85 years

A funeral service to be held at St Patrick's
Catholic Church, Walcha Wednesday, 15th
November 2023 commencing at 10am
followed by interment at the
Walcha Catholic Cemetery.

Piddington's AFDA 6772 2288

ORCHISTON: Anthony Charles

29th October 2023

of Walcha.

Beloved husband of Jill.

Loving father of Mark and a much loved
brother to his family.

A friend to Rhett & family and Kym & family.

Aged 68 years.

A funeral service will be held at Piddingtons
Funeral home on Thursday 16th November
2023 at 10am.

Piddington's AFDA 6772 2288

Death Notice

MACPHERSON; Ruth Jeanette

4.8.1946 – 7.11.2023

of Fitzroy St, Walcha

Dearly loved wife of John.

Loving mother of Duane & Ron and their
families.

Privately Cremated

Piddington's AFDA 6772 2288

Position Vacant

FABRICATION APPRENTICESHIP OPPORTUNITY

We would like to offer a position for an
apprentice to join our team.

To be successful in this role you must:

- Be reliable and punctual
- Be keen and enthusiastic about the trade
- Great work ethic
- Team player
- Attention for detail
- Excellent communication and written skills

To apply please email a cover letter and your
resume to enquiries@linmacengineering.com.au or drop it into us at 211N Pakington
Street Walcha.

Position Vacant *cont*

If you are looking for a
rewarding career with
Walcha Council, take a look
at the positions we have
available now:



Waste Operator – mostly working out of the
Waste Transfer Facility, this position involves
performing various tasks associated the
collection and disposal of various waste
products. Position closes 20/11/23

Water and Wastewater Operator – working
to maintain and improve Walcha's all
important water supply, this position involves
all things water related for the Walcha LGA.
Position closes 20/11/23

These positions can all lead to interesting and
varied careers within Council, from recycling
and waste management to trade work in
the water industry. They are permanent full-
time positions, working a 38 hour week, with
generous conditions.

For more information, and to apply, please
visit our Positions vacant page here <https://bit.ly/3A30YDc>

Small Council, Big Opportunities!

Phillip Hood, General Manager
Walcha Council, PO Box 2, Walcha NSW

Public Notices

DR GENEVIEVE FREER

Phone 6777 2068 0429 668 583

On-site Sharpening at Quota Markets
25th November. Bring your garden tools/
knives and scissors down to be sharpened.
Phone Phillip 0412 706 353.

ROAD CLOSURE FOR SPECIAL EVENT – WALCHA MOTORCYCLE RALLY SATURDAY 18 NOVEMBER 2023



Local residents are advised that a temporary
road closure will be in place on South Street
between Fitzroy Street and Hamilton Street
intersections on Saturday the 18 November
from 10am to 12pm. This section of South
Street has been selected for the Vintage &
Classic Car Display taking place as part of
the Walcha Motorcycle Rally.

Phillip Hood, General Manager
Walcha Council, PO Box 2, Walcha NSW

Public Notices *cont*

Walcha Australia Day Award Nominations – NOW OPEN



Nominations for Walcha
Australia Day Awards are
available in the following
categories:

- Citizen of the Year
- Young Citizen of the Year – Age 24 or
younger
- Senior Sportsperson of the Year
- Junior Sportsperson of the Year – Age 18
or younger
- Walcha Community Group, Organisation
or Community Event

Nomination forms are available on our
website: <https://walcha.nsw.gov.au/walcha-australia-day-awards/> or from Council Office.
Please post, email or drop them into the
Council.

Nominations CLOSE: Wednesday 20
December 2023

Phillip Hood, General Manager
Walcha Council, PO Box 2, Walcha NSW

For Sale

Shoreline Oysters at Farmers Markets this
Saturday 18 November. Ph 0447 520 604.

Layer pullets, all breeds, 20 wks. Delivered
Friday 24.11.23. Phone Jim 0428 194 105.

Oaten hay, 4 x 4 rounds. Small/large orders.
November baled on OUR Tamworth property
(not purchased). Ph Jai 0456 373 113.

Meeting

Walcha Support Group Inc. monthly
meeting, Thursday 30 November at 1pm in
WCCC Rooms. Meditation preceding the
meeting at 12:30 for those interested. This
will be our last meeting for 2023 so if you feel
festive bring a Christmas plate to share. All
welcome.

THE APSLEY Advocate Christmas Box Ads

Start thinking about your Christmas box ads.
Available to book in the last two issues for 2023:
Wednesday 13 & 20 of December.

First Advocate for 2024
Wednesday 10 January



CURTIS

MOWERS & SMALL ENGINES

- Mowers • Ride-ons
- Pumps • Chainsaws
- Whipper snippers
- Chain sharpening
- Bar dressing

SELLING New 30 & 40 Tonne Petrol Hydraulic WOOD SPLITTERS

• Chainsaw chain • Pumps & Generators •

JAMES – 0488 020 762 (7 Days)



CPC SPRAYING SERVICES

- Boom and Reel Spraying
- GPS Fitted 4WD Small Truck

Phone Peter 0404 471 105

Nick Moore

PLUMBING & EXCAVATION SERVICES

WALCHA & SURROUNDING AREAS



Highly qualified and experienced plumber
All aspects of Plumbing and Gas Fitting
Wood heater installation
Roofing and Guttering
Gold License No 59555C

Nick 0418 691 306

nickmoore203@yahoo.com.au

Katy 0422 034 660

CHIROPRACTOR

K Samantha Goor

B.Sc. Anatomy (NSW) M Chiroprac (Macq)

Tuesday & Friday from 9.00am

6777 1340

**MOBILE-FIX
AUTO+AIR**
Mobile Repairer & Airconditioning Specialist
Licensed Vehicle Repairer
Lic.No.46696 RTA Lic.No. AU22616
PATRICK STAGE – WALCHA
Mob. 0428 780 077 Ph. 6778 0595

STORAGE CENTRE WALCHA

20' Containers available for rent \$35 pw + GST
Secure Undercover parking for cars, vans etc \$15 pw +GST

ANGUS 0427 787 332



Andrew: 0427 549 748

Toni: 0421 972 354

A G W RURAL CONTRACTING

GPS Equipped boom spraying
Andrew Wauch 0427 549 748

Tree lopping
Tree removal
Truck & chipper
Bobcat
Post hole digger
Trencher
Woolshed cleaning
Stockyard cleaning



Scott Kermode
0427 100 889

TREETOP
services

treetopservices@bigpond.com

ENGINEERING

John Wall

• Stock floats • Feeders • Sheep & cattle yards • Steel framed sheds & mobile welding

6778 0588 • 0428 778 087

STACES FAST FREIGHT

Delivering
Tamworth – Walcha
0429 608 409



M L MASSAGE THERAPY



Remedial and Sport Massage

MADDIE LANCE

TUES TO FRI 9AM - 6:30PM

0432 635 994

MOBILE
TREATMENTS
AVAILABLE

ELECTRICIAN WALCHA

LICENSED CONTRACTOR SINCE 1990

"Not just that air conditioning guy"

Residential & Commercial work

Dave 0438 007 275

SPLITZAIR (NSW) Pty Ltd 182154c

Lic. EC41191

church notices



ANGLICAN

Holy Communion and Family Service
10:00am.

Phone 6777 2543 or email:
walchaanglican@gmail.com

PRESBYTERIAN

Walcha Sunday 9.30am
All welcome. Phone 6777 2539.

CATHOLIC

Sunday 10:00am Mass.

DISCLAIMER LETTERS TO THE EDITOR are submitted on the condition that The Walcha Telecottage as the publisher of The Apsley Advocate may edit and has the right to, and license third parties to reproduce in electronic form and communicate these letters. They are published at the discretion of the Editor and Board. The Apsley Advocate is printed by The Walcha Telecottage, PO Box 116 Walcha NSW 2354. Phone 6777 1111 Fax 6777 1112. The Walcha Technology Co Operative Limited, the Editor and Staff of this Newspaper have published any article here-in in good faith and bear no responsibility in respect to the accuracy of the information contained in such article. Any person or persons publishing material in this Newspaper do so in the knowledge that they shall personally accept any responsibility for the accuracy and other correctness of such articles and also accept full responsibility for the legal consequences if it be found that the article contains any inaccuracies in the contents of any such articles. **DEADLINE MONDAY 4.30PM** Editor: Anthea Macpherson. Advertising and Sport: Rosalie Gibson, Megan Scrivener, Emily Scrivener and Joscisca Matapakia.

THE APSLEY Advocate

Advertise here!

Like to advertise on our Trade Page?
Small box ad 30mm h x 63mm w \$30.00 p/wk
Large 54mm h x 63mm w \$40.00 p/wk

Call us today on 6777 1111

Marchant Bros. Pty. Est. 2000

WATER CARTING

DELIVERING
7 DAYS
A WEEK

WALCHA COUNCIL
CERTIFIED DOMESTIC
WATER CARTER
10,000 litre tank



A FULL RANGE OF AFFORDABLE TRANSPORT & EARTHMOVING
Dam construction/maintenance, stick raking, road building,
site prep, pipe laying and all timber work.

Check out our website for the full range of machinery,
attachments and services available

FIREWOOD AVAILABLE

Earthmoving and Heavy Haulage Transport
Jason 0427 490 487

02 6777 2024 marchantbros@bigpond.com
www.marchantbros.com.au

BOWLING & RECREATION CLUB

Mon – Wed 4.00pm – Close

Thursday 16 12.00pm – Close

Ladies bowls 9.30am for 10.00am start
Social bowls 1.00pm

Friday 17 2.00pm – Close

2.00pm Bingo

6.00pm Bistro

- Satay Chicken noodle bowl
- Beer battered Basa
- Beef enchiladas with avocado salsa
- Normal menu available, takeaway and delicious desserts.

6.00pm Tickets available for raffles –
meat and veg trays

6.00pm Free Bingo

7.00pm Raffles drawn & Members Draw

Saturday 18 11.00am – Close

6:00pm Bistro

Sunday 19 11.00am – Close

12.00pm Bistro open. Children U/10
kids meal free with an adult order

12.00pm Meat, fruit and veg raffles

1.00pm Raffles drawn

**MEMBERS
DRAW
\$150**

YOU MUST BE A MEMBER FOR
2023/2024 TO BE ELIGIBLE TO WIN

Due to the upcoming power
outage, the club will be closed
on Sunday 26th November.

NPL POKER

Next game Saturday 25th
November. \$15 buy-in.
Cash prizes to be won

Christmas Functions

Taking bookings
Big or small

Choose from finger food, sit
down meals, smorgasbord or
themed food.

Do you live in Walcha Shire? If so you MUST be a member to enter the Club
Social Membership \$15 – Full Membership \$105. PHONE 6777 2077

FOR ALL YOUR EARTHWORKS
TRANSPORT AND ELECTRICAL NEEDS

ALL ASPECTS OF RURAL, COMMERCIAL & CIVIL WORKS



- Freight & Transport • Machinery Float • Stick Raking
- Road construction and maintenance • Trenching
- General Earthworks • Drilling • Mulching
- Dam maintenance and construction
- Erosion Control • Site Preparation • Electrical Works

Ian Notley 04188 29188 • Mark Notley 0422 637 686
www.eteservices.com.au



LINMAC ENGINEERING

IF YOU NEED IT – *We make it!*

CUSTOM TRAYS AND TIPPERS



- Customer consultations to make sure we build to YOUR individual specifications
- Sandblasted and powdercoated
- Toolboxes, timber floors, tipper trays, water tanks ... whatever you need!

AUTHORISED HUSQVARNA DEALER



Check out our new facebook page:
Linmac Engineering Walcha

211N Pakington Street WALCHA
Phone 6777 2822 Email enquiries@linmacengineering.com.au