

# THE APSLEY Advocate

CIRCULATION 1810 – P 02 6777 1111 F 02 6777 1112 wtc@walchatelecottage.com.au walchatelecottage.com.au

25 October 2023



**adcock partners**  
PROPERTY & LIVESTOCK

## Properties Wanted

We have genuine inquiries for cattle properties.

Both breeder and fattening properties required.

## Livestock Wanted

Quality Young Angus  
Cows and Calves

EU Angus Feeder Steers

British Bred Cows  
and Calves

Store Cows to Fatten

Angus Heifers, PTIC to  
Angus Bulls, Feb/Mar  
calving

Long Term Lease  
Cattle Country  
required

Min 3 – 5 year Lease  
option

## Adcock Partners

Nick Hall  
0436 449 033

Brad Hine  
0434 257 198

## Little Kindy now open in Walcha



The sounds of laughter and excited young voices rang out from Walcha's new state-of-the-art child care centre last Wednesday.

*Little Kindy* opened in the building previously occupied by NEFT in Hamilton Street. Boasting two new rooms, one for the Gumnuts (0 – 3 years) and the other for Kookaburras (3 – 5 years) the Centre offers Child Care Monday to Friday from 6:30am to 6:00pm.

Centre Manager, Kailyn Moisy grew up in Walcha and is thrilled to be back in her home town. Kailyn has been managing two of the *Little Kindy* centres in Tamworth prior to moving back to Walcha.

Everything is provided, all you need to do is drop your child off. There is a fully operational kitchen

providing five meals per day for your child. The Centre also provides all nappies and supplies.

*Little Kindy* is open throughout the year, including school holidays, however it is only licensed to care for children who aren't yet attending school. "We don't offer school holiday care for school-aged children, or Out of School Hours care," Kailyn Moisy said.

*Little Kindy* can cater for up to 42 children per day with the fee being \$139 per child, which is then reduced if you are eligible for Child Care subsidy.

There are currently places available on each day. *Little Kindy* can be contacted on 6713 0066 for bookings and enquiries or at [walcha@littlekindy.com.au](mailto:walcha@littlekindy.com.au)



## RAPID SPRAY 200L AND 400L DIESEL UNIT

- 40l/min pump lockable lid
- Auto shut-off nozzle
- Four metre hose
- 15 year tank warranty

**WVS**  
WALCHA VETERINARY SUPPLIES

6 Aberbaldie Rd Walcha • [www.wvs.com.au](http://www.wvs.com.au) • Call 6777 2588



## OK EARTHMOVING

### *Specialising in road construction & maintenance*

• Stickraking • Dam building • Erosion works



Bulldozers • Excavator • Tip-truck • Vibrating Roller

**PH 6777 7430 FAX 6777 7448**

**PETER O'KEEFE: 0429 944 821**



***Our brand new CONE CRUSHER has arrived....which means that we now have 20mm roadbase ready to deliver!***

***20mm roadbase is perfect for your driveway, stock yards, airstrip...etc***

***NO JOB TOO BIG OR SMALL!***

***We have a variety of products that will suit your every need: big rocks, small rocks, rocks of any size!***

✉ SCOTT@BROOKLYNQUARRY.COM.AU

☎ 0434 011 570

📍 1643 OXLEY HWY, WALCHA RD. NSW  
(BY APPOINTMENT ONLY)

🌐 WWW.BROOKLYNQUARRY.COM.AU

## around the traps



By SIMON NEWTON

The smoke is back in the air which brings those memories of 2019 flooding back and after a weekend of weather we have just had, no wonder some bush fires have ramped up. Sunday could have been one of the worst days so far this year, hot and a howling westerly blowing any moisture away we had left in the grass to keep it fresh. The district is looking a little worse for wear and the longer we go without a shower of rain, the longer the grass will take to recover and begin to grow. There is some rain forecast this weekend, looks to be around 10mm which we will all take but we need a couple of inches to get us firing. There looks to be a tropical cyclone forming off the northern coast of QLD which may just turn into some much-needed moisture for the coastal areas. The coast is currently very dry and experiencing some terrible bush fires.

The alarming outlook for our season ahead won't help our receding surface water levels. Numerous people tell me their dams are struggling and the creeks have all but stop running which would be the first time since the last drought broke. We need some storms asap to fill dams and water tanks as there is no one busier in town than the businesses delivering fresh water. It's amazing just how much water people actually use on a daily basis and the small amount of water storage they actually rely on to run a household. It is interesting that we have found ourselves in this predicament considering how quick this has happened. 2019 was a consecutive number of years of below average rainfall but it's like it's just fallen off a cliff this time around.

Farm profitability has taken a huge hit this year with the season going against the farmer, and the processing sector now enjoying some profitable times. Although they say meat trading conditions are tough, Australia is exporting plenty of red meat now at lower costs while buying the product from farmers at reduced values due to the supply. Someone told me that they had a family member in Japan recently and F1 wagyu steak was as dear as it has ever been and was told supply was the issue. It seems strange considering all we are told is that the high end markets are shot for the short term and global trading is tough. Another person who recently visited the USA mentioned a steak was around \$50 and the high end long fed Angus or F1 wagyu steak was only sold to the locals due to short supply. Someone is turning a large profit somewhere along the chain and while ever we cannot grow grass, everyone bar the producer will be holding the stick.

The downturn in farm profits has also created a shift in the property market with a few properties now not selling at Auction. I think we have seen the peak of the property market for the time being and unless people are willing to meet the current market then more properties will remain unsold. The residential markets seem to be bucking the trend and still surprisingly selling well given the squeeze on the cost-of-living pressures. People are still travelling through our beautiful town and showing plenty of interest in the local area who see great investment or relocation opportunities, especially from the larger metropolitan centres.

1820 cattle were yarded in Tamworth on Monday which saw a firm to dearer market throughout. Light restocking weaner steers sold to a dearer trend topping at 236c/kg while the heifer portion made to 165c/kg, feeder heifers topped at 182c/kg while steers topped at 230c/kg. Domestic kill cattle sold to 228c/kg while the best of the cows made 181c/kg. 1600 lambs and 1150 sheep were yarded on Monday with old season lambs topping at 122 while new season heavy lambs made to \$136. Restocking new season light lambs made from \$30-50 while the small penning of mutton topped at \$50 and hgts to \$80.



# Celebrating 50 years of Pasture Wonderland

By Aidan Wall

This Saturday and Sunday 28 and 29 October, Walcha Bowling will celebrate the 50th year of the running of the Pasture Wonderland Men's 4 Tournament and I have been asked by the club to tell a brief record of this event.

The brief from the Annual General Meeting of August 1974 was to develop a tournament for Walcha as a Pasture Wonderland and highlight the many attractions in the district, as well as the good fellowship of bowls. One must acknowledge the hard work of many people, most of which are not with us today.

To Frank Lynch (Manager of Permewan's (Now IGA)) for arranging corporate sponsorship in conjunction with the Nivison family. Their wonderful support and design of the A.S. Nivison Memorial Shield to be the Perpetual Trophy. To Alan Carter the then Manager of the Club in taking nominations and general ideas on how to run the event. To Owen Sweeney for his work in gathering support from local businesses whom have been very generous. In the 25 years I was associated with the running of the carnival local businesses contributed more than \$30,000 in sponsorship with all businesses in town very involved.

Nominations for the carnival come from a wide area, from St Marys in Sydney, Swansea Works Club, Brewarrina, Coolah, Tamworth, Taree, Sawtell, Guyra, Uralla, Wauchope and Armidale. Players enjoyed their time so much that all rooms are booked in for the following year and a waiting list was needed for teams wishing to enter, and this has remained so ever since.

The lady bowlers and the social committee made large contributions, provided high teas and along with Noel Cross a barbeque on Saturday night using Walcha produced steak and lamb.

To Ron Cotterill, Alan Flanagan, Roy Olrich, Denis Makeham who came to our home on the Thursday nights prior to the carnival to do the draw. My late wife Gwenda would type every detail on the draw sheet and no mistakes were allowed. Also Betty Buckland, Ned Fisher, Derek Star, Bob Burnett and Joyce Henry for their help. They were very dedicated staff.

Several changes have been made to the carnival format, to its betterment. Originally then two games Saturday, two Sunday morning, with Semi Finals and Final after lunch Sunday. Along with a consolation event for those not involved in the finals.

Today the competition starts at 10.00am Saturday morning with one game, and two games in the afternoon. Two games Sunday morning and one game in the afternoon.



*Billy Brooker and Aidan Wall back in 2009.*

*Billy has only missed two tournaments and will be here on the weekend for this one.*

*Aidan ran the carnival for around 30 years.*

For this carnival to run for 50 years with two greens full (108 players) is a great achievement, which very few clubs, if any, have achieved.

This is a tournament for teams to compete for prestigious trophies and at the same time have an annual reunion with old friends. Thanks also to all staff, including kitchen staff for sharing Walcha's great hospitality.

Finally I would like to thank all Walcha businesses for their help and courtesy extended to myself and the club in my time involved with this great carnival. To all concerned in running this event Tony Asmus, Noel Goodwin, President Adam Hall, Gordon Michie, Gordon Bird and Andrew McGuffog who give so much time to prepare the top green and surrounds, many thanks. A big thank you also to the current bar staff for their wonderful service.



## Stock and Property Watch

[www.nutrienharcourts.com.au](http://www.nutrienharcourts.com.au)

### Family Home with views over town



- This spacious home is situated a short stroll from town.
- The weatherboard and iron home consists of four bedrooms, three with built ins. The fourth bedroom has a walk in robe and large ensuite with corner spa.
- Open plan lounge with wood heater and the most amazing views of town.
- Spacious dining flowing through to the sun drenched family room with gas heating for winter.
- Huge timber kitchen with cooktop, under bench oven, dishwasher and an abundance of cupboards.
- Fully enclosed two tier yard with covered entertaining area, wood shed, garden shed and double garage with remote access.

Enquiries to Peta Carter: 0407 350 781

**REDUCED TO \$520,000**



45ft flat top • 45ft single deck cattle float • 26mtr B Double  
19mtr mini B Double • Low Loader available for hire



**BRIAN**  
**Smith**  
**TIMBER**  
**TRANSPORT**

Call us for  
your large  
Transport  
needs

**WALCHA**  
**02 67772126**

**Bonnie Smith 0429 772 077**  
**Brian Smith 0427 780 216**



## EVE FLOWERS

*Gorgeous fresh flowers  
delivered to Walcha, Monday to Friday*

*A lovely seasonal selection direct from our farm and  
fellow Australian growers*

*Specialising in unique and sustainable floristry  
for weddings, events and funerals.*

Florist open 6 days  
Phone 0409 566 099  
or order online at [eveflowers.com.au](http://eveflowers.com.au)  
45 Bridge St Uralla 2358

# Scams evening

**From Pam Makeham**

Over 50 people enjoyed the evening with Quota last Wednesday night with community members joining the Quota ladies for an evening of friendship and fellowship.

Quotarians and their guests were all educated by Anne, Margaret and Alice from the Commonwealth Bank on Cyber safety. Topics covered included: Knowing how to detect scams and fraud on devices; to know the difference and what to do if caught up in one. How many different types there are and how professionally the scammers operate. Another one to look out for is senior financial abuse. Remember: if it sounds too good to be true then it probably is - delete and report it, was their advice.

It was incredible to learn that Australia had more reported incidents of scams than America and the United Kingdom put together and lost over \$500 million in 2022.

Di once again provided a beautiful baked dinner, with homemade apple pie, custard, ice-cream and plenty of chocolates.

Everyone enjoyed a happy, friendly night and came away with a greater awareness of cyber security.

Thank you to our guest speakers Anne, Margaret and Alice for a very informative presentation and also the information package.



## Travelling stock reserves

With seasonal conditions drying across the state, Local Land Services is encouraging landholders and drovers to plan ahead when it comes to using travelling stock reserves (TSRs).

TSRs can play a key role during dry conditions and drought, with reserves providing emergency movement, refuge or fodder for livestock.

Local Land Services Business Partner – TSRs, Sam Hand said if landholders are considering using a TSR in the near future, it's important to speak to their local TSR ranger first.

"Our TSR teams are regularly assessing the condition of reserves for groundcover, feed and water availability, as well as the potential for grazing impacts to biodiversity values," Mr Hand said.

"Unfortunately, TSRs are not immune from dry conditions.

"We encourage landholders and drovers to contact their local TSR team to see what reserves and options are available." Landholders and drovers are required to hold a permit before using a TSR.

If you have any questions about TSR usage and management, please call your closest LLS office and ask for a member of the TSR team.

## Financial Services



- **Rural and Commercial Finance**
- **Leasing**
- **Home Loans**
- **Insurance Premium Funding**

**Kel Penfold**

6766 5309; 0427 667 118



# Give your child a flying start to school

Do you have a child starting school in 2024 or 2025? Would you like to give your little one a flying start to kindergarten? Parents and carers are invited to hear some tips about how to help their child prepare to start school.

Amelia and Sarah from the 'Happy Dots' Occupational Therapy team will explain how you can give your child a great start to kindergarten with some easy tips and strategies. Walcha Central School teachers will also provide pointers for reading with your child.

Join us for this one-hour session at Walcha Central School Library on Tuesday 31st October 5pm, or at Walcha Preschool on Wednesday 1st November 9am.

For more information, contact Walcha Central School 6777 2777. This workshop is thanks to the support of Schools Plus.

# Celebrate 50 years this Friday at the New Birds Boutique

The sails on the iconic Opera House lit up over the weekend to celebrate its 50th birthday, and Walcha's iconic ladies fashion boutique, The New Birds, will light up this Friday to mark over 50 years of providing the Walcha community with the latest in fashion.

Shelley Relf is looking forward to celebrating this milestone with the community on Friday from 10.00am. Pop into The New Birds for insane deals that will be running all day, as well as cake and champagne. It will be a great opportunity for you to stock up on Christmas gifts, or something special to wear to Christmas festivities.

Shelley has been a 'New Bird' for 14 years now, running the store with Helen Henry for a few years before taking over the store on her own.

The New Birds was opened back in 1972 by Jan Weber and Barabra Fenwicke to supplement their families' farm income. The two ladies put their heads together and asked lots of their friends what they should name the boutique. Eventually all names were put into a hat and out came 'The New Birds'. It is quite astonishing that the name, or the location hasn't changed in over 50 years... and has become an icon in Walcha!

Jan and Barbara sold the boutique to sisters-in-law Jill and Jenny Whiteman before sisters Shirley Hinton and Helen Henry purchased the store.

The New Birds stock many of Australia's top

fashion labels and Shelley has diversified into gift ware, to make the store a beautiful boutique with something for everyone.

So stay tuned on Social Media and in the front window this Thursday evening when the 50th Birthday bargains will be revealed!



Join Shelley this Friday at The New Birds for cake, champagne and amazing birthday specials storewide.

**'How to prepare your child for starting school next year'**

Presented by  
'Happy Dots' Occupational Therapy team  
& Walcha Central School

**Hear how to give your child a great start to kindergarten with tips and easy strategies.**

Join us on either  
Tuesday 31 October 5pm - 6pm  
Walcha Central School Library  
OR  
Wednesday 1 November 9am - 10am  
Walcha Preschool

An initiative of  
**happydots** Occupational Therapy for Children  
**Schools Plus**

**Walcha citizens,**  
Get to **Know your Providers**

*Local Business*

Do you want to know about different services for your business?  
Do you want to improve your business network?  
Do you have questions about services provided for your business?

**Come along to network over brekkie and coffee.**

This is a relaxed forum for you to meet all the business and agri-business service providers, increase your awareness, and network.

Also, an opportunity to ask any questions you may have relating to the upcoming motorcycle rally.

**Free breakfast and free barista coffee for all the attendees!**

RSVP to Walcha Council by Nov 01  
at 02 6774 2500 or [council@walcha.nsw.gov.au](mailto:council@walcha.nsw.gov.au)

When?	What time?	Where?
November 08 (Wed)	7AM-9AM	Walcha Bowling Club

**Main Presenters-**

# Walcha Resilience Stories

Another story from Walcha Council's Disaster Risk Reduction Co-ordinator Kruthika Nagananda who is compiling stories from locals as to how they survived recent disasters to help people learn from each other, and for the community to realise they are not alone as everyone has different ways of coping.

## Vicki McIvor's journey in Volunteering

This is a story of a volunteers journey who lives in the Walcha township. While Vicki has not experienced any disasters, her life journey in the town plays an important role. Volunteerism and disasters go hand in hand - many volunteer organisations and groups helped the Walcha community in returning to normality post-bushfires in 2019-20 Vicki was involved through Country Women's Association for donation management. Her journey in the town gives the narrative of reflection of Walcha's growth in volunteering.

Vicki has lived all her life in Walcha, has lived in the town for about 40 years and served the community with pride. She is country born and bred, one of six children in her family. She worked as a nurse for 40 years, now retired. She has been part of multiple organisations and groups; Walcha Hospital Auxiliary as a secretary for 21 years, member of Historical Society, Country Women's Association, Walcha RSL Auxiliary, Meals on Wheels just to name a few over the years. She also works in a craft shop several times a month.

Vicki defines resilience as 'keeping mentally and physically going and keeping yourself busy'. "Everybody experiences pain, we need to go through for a while...and move on. Dwelling on it, would only lead to depression", she says. She expresses gratitude to her family and friends for their support during her difficult moments. She has experienced many setbacks in life; however, she considers

volunteering to be a fulfilling and rewarding experience that motivates her to continue, even after her retirement.

"We don't necessarily call it 'volunteering', instead it is looking after our neighbours. Everyone is a neighbour in our small community, and helping each other out in this community is something I have learnt from my father. He believed in the barter system; he grew potatoes and sometimes exchanged a bag, for something he did not have. But he always said, give your neighbour a hand but 'don't expect your neighbour to help you', you do it out of kindness, and that's what I have done", she said. Her initial upbringing in the community helped her to be a part of the community organisations to keep her life fulfilled.

Through her journey she has seen a shift in volunteerism, "I have seen this shift in the attitude, it is hard to get volunteers nowadays. Every organisation I work is reflecting the same, we need more people to help us out. Even if it is for a small thing, like mowing the lawn, or watering plants." She has seen most changes post COVID, bush fires and road closures- she thinks those might be the cause. In her observation, COVID changed a lot of things around Walcha- it kept everyone isolated, the bush fire stopped the traffic coming, "has that changed the volunteering spirit in Walcha?", she wonders.

"The younger generation doesn't seem to be eager to volunteer. Many of our organisations are of the same generation and find it a bit harder, so we need young blood and something needs to be done, but I am not sure what!", she said.

Added statistics according to the report published by Volunteering Australia in September 2022, 'the rate of volunteering, as of 2020, was 14.33 per cent, down from 23.2 per cent in 2001.' (as shown in the figure).

The 2022 report reports that, 'participants in the 15-40 and 41-65 age groups were declining, while the rate among the oldest cohort gradually increased. Regarding volunteering intensity, volunteers aged 66+ consistently worked more hours during 2001-2020 than those aged 41-65'. This proves Vicki's experience and concerns on volunteer decline. Her urge to do something about this concern has led to this article.

Volunteerism has brightened her social circle and the need to serve the community, which she thoroughly enjoys. "There are ranges of volunteering organisations and groups. Walcha has 52 volunteering organisations today. I remember the days when we had over 100 volunteering groups. It has certainly declined, but still going strong," she says. With 52 volunteering options, there are many things one can find which fits their interest and purpose. "In volunteering, you can choose what you want to do. That is the beauty of it", she says.

Vicki's story of volunteering is certainly inspiring. She urges everyone in the community to experience this joy of serving. She is happy to answer any of your concerns regarding volunteering. Please reach out to her if you are interested and want to explore volunteering. "I would like to see Walcha continue to thrive in volunteerism", she adds.

10-11  
NOVEMBER  
2023  
ARMIDALE  
SHOWGROUND  
FRI 2 - 5PM | SAT 9AM - LATE





FOOD TRUCKS  
MARKET STALLS  
TRACTOR PULLS  
DRAUGHT HORSES  
VINTAGE MACHINERY  
AUSTRALIAN MUSCLE CARS  
STEAM POWERED ENGINES  
WORKING DEMONSTRATIONS  
SAW MILL & BLACKSMITHING

SUN - 12 NOV - FREE ENTRY TO AUCTION  
SUNDAY MEGA  
ANTIQUE FARM  
EQUIPMENT AUCTION  
TICKETS  
ADULT \$10  
KIDS UNDER 16 FREE

Stallholder and event participation information  
Would you like to participate in this year's event with a display of antique machinery, lost trade or as a stallholder or food truck vendor?  
Please contact club secretary Bronwyn on 0408 658 594 or president Rob Taber on 0428 751 275 or email neamcarmidale@gmail.com

Brought to you by the New England Antique Machinery Club



Year	Participation in formal volunteering
2001	0.23
2002	0.19
2003	0.21
2004	0.20
2005	0.19
2006	0.22
2007	0.20
2008	0.20
2009	0.19
2010	0.22
2011	0.18
2012	0.19
2013	0.21
2014	0.20
2015	0.19
2016	0.18
2017	0.19
2018	0.20
2019	0.17
2020	0.14

Page 6 ... 25 October 2023



# Local success at NSW Women's Sandgreens

By AJ Cross

Walcha Golf Club hosted the 2023 NSW Women's Sandgreen Championships where 92 players teed off last Saturday and Sunday, including 27 members from the host club.

Club champion Simone Sweeney combined with former champion Cheryl McDonald and her sister Donna Martin to win the Scratch Teams division for the SWLGA Bowl. The trio registered a two round total of 332 (161, 171) for a comfortable four shot victory over a Nyngan team on 336.

Locals Rose Baumer, Julie Presnell and Sally McCormack carded a 267 (131,136) to finish runners up in the Nett Teams RLGA division. Wauchope golfer Ann-Marie Campbell won the main event after she posted a 36 hole total of 160 (79,81). Walcha's best was Cheryl McDonald 164 (79,85).

Defending champion Sheree Lokan from Iluka was a bit off the pace on 166 (86,80), whereas Simone Sweeney finished in the Top 10 with 168 (82,86).

In the Division 1 Nett Julie Presnell was runner up on 132 (64,68) while Barbara Mulligan took out the Division 2 second day Nett with 64.

Runners up in the Division 2 Scratch were Julie Olrich (94,90) and Polly Locke (92,92) both on 184 over the two rounds, while Cheryl McDonald won a long drive and Cark Street a N.T.P.



*Donna Martin, Simone Sweeney and Cheryl McDonald were all smiles after their big win last weekend.*

thumbs



- 👍 To Fiona and Millie at the Walcha MPS for their friendly and professional service last Saturday. Much appreciated.
- 👍 To Lance Partridge for hosting the school reunion barbecue and luncheon last Saturday. A great weekend for 30 ex-WCS students turning 70 years old.
- 👍 To the ladies at Walcha Central School office for helping me out with a charger cord for my laptop. You saved my day. Cheesecake is on the way.
- 👍 Thank you to the staff at the Telecottage for always being so helpful.
- 👍 Thank you to Betty Sweeney for taking time to mentor and inspire players on the tennis court and bridge table. You make such a difference!
- 👎 To those who damage vehicles and machinery in order to steal the fuel.

**Contributions will be received in person, by phone or email and must be accompanied by your name and contact details. They will be printed at the discretion of the editor.**

**Pitt Son's** REAL ESTATE & LIVESTOCK

SAM PAYNE 0428 667 404 | ANDREW BLOMFIELD 0428 667 402  
RON VINCENT 0427 775 821 | TROY DAVEY 0427 157 557

FOR LATEST  
UPDATES



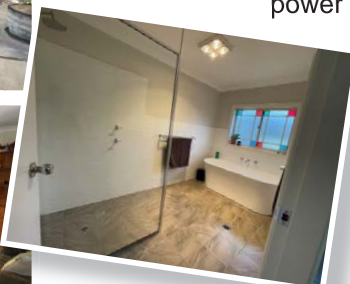
6777 2000 | [www.pittsons.com.au](http://www.pittsons.com.au)

## Stunning Brick Home on 2 acres



**Exquisite 3 bedroom brick home located on the edge of town. Situated on 2 acres. You'll be captivated by the fresh paint and carpet.**

- Kitchen is complete with a walk-in pantry and an abundance of cupboard space.
- The new three-way bathroom adds a touch of luxury to the home
- Outdoor entertaining area, perfect for hosting gatherings and enjoying the barbeque.
- In addition to the bedrooms, this house also features an office, ideal for those who work from home.
- Double garage attached to the main house.
- The property also boasts a large Colorbond double garage and workshop complete with power supply.



**Don't miss out on the opportunity to own this beautiful brick home with ample space and modern renovations.**

**\$680,000**



# Grandparents' Day at Walcha Central



Left: The Towney family. Right: The Nicholls and Young family



Left: Arielle and family. Centre: Cheyanne and family.  
Right: Toby, Charlie and Alex with Linda.



Left: Warwick, Fletcher and Jackie. Centre: Kix and Nancy. Right: Archie with his Pop.

Walcha Central School celebrated the special people in their lives last Friday with Grandparents Day.

Over 100 family and friends joined Kindergarten to Year 6 in the classroom for a delicious luncheon supplied to grandparents by the canteen and teachers. The students were excited to show their special guests around the classroom, playground and vegetable garden.

Six classes entertained grandparents with various performances, of poetry recitals, dances, singing and personal story telling. This showcase concluded with a whole K-6 musical performance of *What a Wonderful World* and the WCS School Song.

Grandparents held this event in high regard with many travelling from as far away as Tasmania, Orange, Gloucester, Tweed Valley, Young and Port Macquarie.



Left: Makeham family. Centre: Margaret, Topia and Correll.  
Right: Trevor, Rosalie and Bonnie



Left: Toni, Violet and John. Right: Anthea and family.



## 21T EXCAVATOR

Available for all timber work or dam cleaning  
Fully Insured • Competitive rates



## NOW AVAILABLE KUBOTA 75 BOBCAT

- Ideal for cleaning and regravelling sheep or cattle yards
- Stick raking
- All small scale earthworks

Please contact Andrew Wark 0427 040 832

**PKF**  
Wealth



Achieve the best outcome for your investment and retirement goals. Contact our highly qualified and professional financial adviser today.

**Greig Meyer** is a Certified Financial Planner and principal of PKF Wealth based in Tamworth and Walcha. For more information or to make an appointment contact one of our friendly staff now.

### Tamworth

22-24 Bourke Street

Tamworth NSW 2340

### Walcha

12 Derby Street

Walcha NSW 2354

Greig Meyer is an Authorised Representative of PKF Wealth TMW Pty Ltd

ABN 21 154 894 130 AFSL No. 515733



## Rural



### Highly Developed — Turnkey Beef Production

**'Carinya Aggregation', Yarrowitch, NSW**

- 966.7ha\* (2,388.8\* acres) comprising 'Carinya' 630.5ha\* (1,558\* acres) & 'Carinya Park' 336.2ha\* (830.8\* acres)
- 2 homes + 2 cottages, modern livestock handling infrastructure, commodity & plant storage, internal rd access
- 50km\* E of Walcha, centrally located between the regional cities of Port Macquarie, Tamworth & Armidale
- Well-watered with reticulation to troughs, dams & frontage to the Yarrowitch River
- Excellent fencing, 29 main paddocks + laneways, pasture improved, strong fertiliser inputs
- 'Carinya Aggregation' will be auctioned on the same day as the neighbouring property 'Windaroo'

[raywhiteruralnsw.com.au](http://raywhiteruralnsw.com.au)

#### Auction

Friday 24 November 10:30am  
Walcha Vet Supplies

**Andrew Starr** 0428 792 466

**Bruce Birch** 0428 363 063

**Ray White Rural NSW**

\*approx.

## Rural



### Prime Grazing in a Reliable District

**'Windaroo', Yarrowitch, NSW**

- 315.65ha\* (780\* acres) offering modern pastures, strong fertiliser inputs, ease of management & high rainfall
- 50km\* E Walcha, centrally located between the regional cities of Port Macquarie, Tamworth & Armidale
- Well-fenced, subdivided into 10 paddocks with 18 dams, Rocky Gully traverses with spring fed water, substantial road frontage with multiple all weather access points
- 2 titles & 2 dwelling entitlements offering elevated & uninterrupted views of the nearby gorge country
- 'Windaroo' will be auctioned on the same day as the neighbouring 'Carinya Aggregation'

[raywhiteruralnsw.com.au](http://raywhiteruralnsw.com.au)

#### Auction

Friday 24 November 10:30am  
Walcha Vet Supplies

**Andrew Starr** 0428 792 466

**Bruce Birch** 0428 363 063

**Ray White Rural NSW**

\*approx.





**Sophie Thomson | James Levingston**

Conveyancing | Power of Attorneys  
Wills | Estates | Traffic Offences

Local Firm - over 70yrs in the Community

**02 6777 2066** info@walchalaw.com.au  
walchalaw.com.au

INCORPORATING PATTERSON BYFIELD & BRYEN

## Nick Moore PLUMBING & EXCAVATION SERVICES

WALCHA & SURROUNDING AREAS



Highly qualified and experienced plumber  
All aspects of Plumbing and Gas Fitting  
Wood heater installation  
Roofing and Guttering  
Gold License No 59555C

**Nick 0418 691 306**

nickmoore203@yahoo.com.au

Katy 0422 034 660

## EXCEED PROPERTY MAINTENANCE



**PHONE GREG  
0401 344 537**

- Roof Repairs
- Residential Carpentry
- Gutter Cleaning
- Solar Panel Cleaning
- Chimney Cleaning
- Int/Ext Painting
- Hedge Cutting/Tree Pruning
- And much more

**25 YRS EXPERIENCE, LICENSED & INSURED** lic no 356559c

## TRU BLU RECYCLING

**CASH FOR CARS & TRUCKS**  
ANY CONDITION

TRUSTED LOCAL OPERATOR  
FOR OVER 15 YEARS

Mark 0412 310 650

## CURTIS

MOWERS & SMALL ENGINES

- Mowers • Ride-ons
- Pumps • Chainsaws
- Whipper snippers
- Chain sharpening
- Bar dressing

**ALL TYPES**

SELLING New 30 & 40 Tonne Petrol Hydraulic WOOD SPLITTERS  
• Chainsaw chain • Pumps & Generators •

**JAMES - 0488 020 762 (7 Days)**

## STORAGE CENTRE WALCHA

20' Containers available for rent \$35 pw + GST  
Secure Undercover parking for cars, vans etc \$15 pw +GST

**ANGUS 0427 787 332**

## CHIROPRACTOR

**K Samantha Goor**  
B.Sc. Anatomy (NSW) M Chiroprac (Macq)  
Tuesday & Friday from 9.00am  
**6777 1340**

## WALCHA HIRE

**Andrew: 0427 549 748**  
**Toni: 0421 972 354**

## A G W RURAL CONTRACTING

GPS Equipped boom spraying  
**Andrew Wauch 0427 549 748**

## Remote Bookkeeping, Bas Agent & Business Consulting Services

Mel Byrnes  
0435 473 767  
BAS Agent - 26141064  
www.everybusinesssolutions.com.au

## SELF STORAGE

NORTH STREET - WALCHA  
VARIOUS SIZED SHEDS  
SECURITY FENCED  
**67773899 0428 653 307**

## MOBILE-FIX AUTO+AIR

Mobile Repairer & Airconditioning Specialist  
Lic.No.46696 RTA Lic No. AU22616  
**PATRICK STACE - WALCHA**  
Mob. 0428 780 077 Ph. 6778 0595

## TREETOP services

Tree lopping  
Tree removal  
Truck & chipper  
Bobcat  
Post hole digger  
Trencher  
Woolshed cleaning  
Stockyard cleaning

**Scott Kermode 0427 100 889**  
treetopservices@bigpond.com

## New England IT

## ONSITE COMPUTER SERVICE + SALES

**Tim Sutton 0414 874 523**

## SPLITZAIR WALCHA

- AIR CONDITIONING & ELECTRICAL
- Domestic & Commercial
- Split system specialists

**Dave 0438 007 275** Lic. 182154c

**DISCLAIMER** LETTERS TO THE EDITOR are submitted on the condition that The Walcha Telecottage as the publisher of The Apsley Advocate may edit and has the right to, and license third parties to reproduce in electronic form and communicate these letters. They are published at the discretion of the Editor and Board. The Apsley Advocate is printed by The Walcha Telecottage, PO Box 116 Walcha NSW 2354. Phone 6777 1111 Fax 6777 1112. The Walcha Technology Co Operative Limited, the Editor and Staff of this Newspaper have published any article here-in in good faith and bear no responsibility in respect to the accuracy of the information contained in such article. Any person or persons publishing material in this Newspaper do so in the knowledge that they shall personally accept any responsibility for the accuracy and other correctness of such articles and also accept full responsibility for the legal consequences if it be found that the article contains any inaccuracies in the contents of any such articles. **DEADLINE MONDAY 4.30PM** Editor: Anthea Macpherson. Advertising and Sport: Rosalie Gibson, Megan Scrivener, Emily Scrivener and Joscisca Matapakia.



## Tennis

Round 2 of the 2023 Spring Comp was played out on Tues 17th Oct in very windy cold conditions.

Ebden: D Sweeney, C Ireland, T Gibson and R Mathews drew with Millman: T Whillock, P O'Brien, A Barillaro and J Burgess 23 all in a hard fought battle.

Popyrin: E Blomfield, M Ireland, B Kommeran and T Tape defeated Bolt: H Thomson, R Bagnall, K Smith and M Luchich 31 to 28 in a great close match.

De Minaur: D A Locke, D Clark, G Wall and J Hoy (floating for S Ireland) defeated Purcell: M Lockyer, C Bruce, A Blomfield and P Tape 30 to 22.

Another great night of Tennis. Thanks to Jen for floating. Next Club meeting will be held on Mon 13th Nov at 6.30pm all members are welcome to attend. See you all at the net soon.

## Gun Club

Walcha Gun Club welcomed 30 shooters at the Bergen range on Saturday 14th September. Visitors came from Tamworth, Port Macquarie, Guyra, Newcastle, Armidale and Walcha. On a lovely sunny day with a prominent S/E breeze there were some excellent scores shot, none more than 16 year old Jodie Henshall shooting 49/50 in Double Rise (where 2 clays are thrown at once) on her birthday. Now there's a challenge for young boys.

### Results

#### Event 1. 50 Target Double Barrell.

AA grade 1st Tammy Henshall 50/50 2nd Brad Henshall 49/50

A grade 1st John Lisle 50/50 2nd Dean Rumbel 49/50

B grade 1st Trevor Flaxman 49/50 2nd Jim Abell 48/50

C grade 1st Lesley Langer 43/50 2nd Will Davidson 42/50

#### Event 2. 50 Target Point Score

AA grade 1st Brad Henshall 148/150 2nd Craig Rogers 147/150

A grade 1st Terry Rumbel 147/150 2nd Bill Fletcher 141/150

B grade E 1st Jim Abell 140/150 Glen Dickson 140/150

C grade 1st Will Davidson 125/150 2nd Lesley Langer 116/150

#### Event 3. 25 Pair Double Rise

AA grade 1st Tammy Henshall 46/50 Brad Hensall 46/50

A grade 1st Bill Fletcher 45/50 2nd Jamie Poole 38/50

B grade 1st Jodie Henshall 49/50 2nd Craig Rogers 43/50

C grade 1st Trevor Flaxman 38/50 2nd David Lawrence 37/50

The days High Gun for best overall score went to Brad Henshall with a great 243/250. Our next shoot is on 11th November where the summer weather is eagerly awaited.

## Bowls

**Dads Army:** Another big number of players turned up on Thursday afternoon for the Dads Army comp. This allowed for two games of triples and a game of pairs.

The first game of triples saw Eric O'Keefe, Matt Andrews and Mark Hogan 14 - 9 winners over Noel Goodwin, John McCormack and Geoff Salt.

The second game was a one shot win to Terry Parker, Peter Hayes and John Watts after Barry Kliendienst and Mick Bullen who played twice scored six shots on the last end to go down 16 - 15.

Barry Hoad and Gordon Bird were the chook winners after they defeated Tony Asmus and Neil Dark 18 - 12.

The raffles were won by Mark Hogan and George Lawrence.

Twilight: The conditions were perfect for the twilight bowls on Friday night.

Several fill ins were again evident to make sure all games could be played.

Team 3 had their first win after defeating Team 7.

Team 8 started slowly but ended up comfortable winners over Team 1.

On rink 2 the score was 8 all with one end to play. The result ended up 9 all when the scorer could not decide which bowl was closest to the jack.

## Ladies Bowls

In beautiful weather conditions last Thursday twelve players attended Bowls in which we played three games of pairs the results being Marg Tickle and Esther Hunt defeated Lee McCoy and Phyllis Hoy 18-9, Sari Andrews and Kirra-lee Murphy defeated Elly Pullen and June Hayes 20-13, Rosie Aitken and Matt Andrews defeated Janice Rizzi and Carmel Ryan 19-14.

This week is the last chance you have to put your name down for Association Day which is being held in Walcha on 2nd November starting time is 9-00 for 9-30 with full uniform to be worn.

Also starting from the 2nd November our starting time has changed it being 9-00 for 9-30 start.

Social bowls on again this week.

The Ivy Makeham Singles nominations close this Thursday 26th November with games to commence on the 9th November and is also a full uniform event.

## Cricket

### Walcha/Uralla v Hillgrove 2nd Grade

#### Hillgrove

H EASTWOOD ro b B Mansfield..... 15

B HEAGNEY c M Harper b Blomfield ..... 74

B MARSHALL c D Boyd b C Boyd ..... 16

I GILPATHAGE c D Boyd b C Boyd ..... 22

C RAINGER b C Boyd ..... 5

M LAURIE not out ..... 15

M RAZA not out ..... 8

Total 170. Extras 15. Bowling (overs/maidens/runs/wkts)

M Harper 6-2-0-27, W Fletcher 5-1-0-15, T Crombie 6-0-

0-32, J Grills 5-0-0-20, B Hall 4-0-0-19, C Boyd 8-0-3-35,

E Blomfield 3-0-1-17.

#### Walcha/Uralla

J GRILLS lbw H Raza ..... 0

B HALL c K Rainger b D Waters..... 28

E BLOMFIELD b M Raza ..... 16

D BOYD b H Raza ..... 5

S RAFFERTY b D Waters..... 18

C BOYD b D Waters ..... 16

T CROMBIE c M Laurie b M Raza ..... 0

B HOY b M Laurie..... 17

B MANSFIELD b Pk Sinha ..... 24

W FLETCHER not out..... 14

M HARPER ro B Marshall..... 7

Total 168. Extras 24. Bowling (overs/maidens/runs/wkts)

Haider Raza 6-1-1-17, C Hunter 3-0-0-28, D Waters 7-0-

3-40, M Raza 7-1-2-36, Pk Sinha 5-0-1-28, M Laurie 2-3-

0-1-12.

### Walcha/Uralla v East Gold 3rd Grade

#### Walcha/Uralla

N SWAN b A Paul..... 0

B JEX b A Paul ..... 11

D MORLEY lbw M Mather ..... 45

P MOONEY c ? b H Sharp ..... 109

B MOORE c ? M Mather ..... 0

M TASIK c ? b H Sharp ..... 13

J MCFARLAND lbw H Sharp ..... 4

L HUNT not out ..... 7

C MOONEY not out ..... 13

Total 219. Extras 15 Bowling (overs/maidens/runs/wkts) A

Paul 8-0-2-29, E Northam 8-0-0-45, G Craig 8-0-0-35, T

Craig 3-0-0-15, T Adams 3-0-0-23, M Mather 6-0-2-40, H

Sharp 4-0-3-30.

#### East's Gold

A PAUL lbw N Swan ..... 11

T CRAIG b D Morley ..... 38

T ADAMS b D Morley ..... 20

D NORTHAM c Tasik b D Morley ..... 28

L NORTHAM c Tasik b B Ussher ..... 28

H SHARP b H Ussher ..... 11

G CRAIG lbw B Ussher ..... 0

S NORTHAM b H Ussher ..... 2

K SIMPSON c C Mooney b D Morley ..... 11

MICK MATHER c Tasik b C Mooney ..... 25

T HISLOP not out ..... 12

Total 203. Extras 17. Bowling (overs/maidens/runs/wkts)

P Mooney 4-1-0-10, J McFarlane 8-0-0-45, N Swan 1-0-

1-8, C Mooney 5-4-0-1-38, D Morley 9-0-4-54, B Ussher

7-1-0-19, M Tasik 2-0-0-18, H Ussher 3-0-2-11.

## Wednesdays Golf

Last Wednesday we played a par event for Cathy Lisle's trophy.

Penny King came in the winner with a +4, counting out Maddie Lance with +4. Next sweepstakes went to Sue Partridge with +3, Pauline Carter +1 and Polly Locke -1.

Maddie Lance was also the closest to the pin on Hole 3 and Sue Partridge claimed the NTP on Hole 16.

We hosted the NSW Sandgreen Championships over the weekend and some of our girls were in the winner's circle. (See Page 7 for results)

I would like to thank all the members who kindly donated raffle prizes, baked delicious goodies, arranged magnificent flowers, raked the greens, lent their carts, and helped in any way to make the championship such a resounding success.

Today we are playing Stableford for the Patrons trophy.



*The Walcha Neighbourhood Centre operates Mondays and Fridays from 9:30 to 2:30*

Mondays we have a cuppa and a yarn, and occasional group activities. Fridays we offer a food pantry where you can grab a bag of groceries for \$20.

We look forward to seeing you there. Everyone Welcome!

**Unit 2, 27e Fitzroy St | 0493 560 587**



**First up, a big shout out to my old** Walcha Roos and Rugby League Cricket Club teammate Wayne 'Pothole' Boyd who has been experiencing some challenging health issues for a little while now. The Walcha/Uralla Cricket President has been under the care of John Hunter Hospital staff this week who have been dealing with a severe blood clot in one of his legs. Hopefully your recovery is a swift one Wayne.

...

**Congratulations to another one** of my former Rugby League Cricket team mates Peter 'Duke' Boyd on being a member of the Tamworth team that won Division 2 of the NSW overs 70's Cricket Championships held in Armidale, Guyra and Walcha last week. Despite losing their opening game to Central Coast on Monday Duke scored an unbeaten 19 runs and took 2/20.

...

**In game 2 Tamworth defeated** New England/Quirindi which included current Walcha/Uralla 3rd Grade opening bat and wicket keeper Bob Jex after chasing down 102 for the loss of just one wicket in 23 overs. 'Duke' didn't bat in that game but snared 2/16 while Bob made 21 runs before he retired.

...

**'Duke' saved his best for last scoring** 12 runs in the final at Lambert Park in Armidale against Monaro out of the Tamworth total of 6/166 before then sending down seven overs, four maidens including a two wicket second over maiden to capture four wickets at a miserly cost of just eight runs.

...

**A little while back Chris Betts** strolled into the Bowling Club to attend a tropical themed 40th Birthday party for Cassie McKenna but was surprised to find people dressed up as Zombies and Ghosts. When Chris found out the tropical party for Cassie was actually at the Golf Club he soon exited the BC Halloween 'Shindig' and made a quick detour to the correct venue.

...

**It has taken a bit of time but** I finally removed my remaining possessions from the pool last week where during the clean out I came across a Walcha Flippers towel that had been put aside to return to Molly Furneaux after she had left it behind some time ago.

...

**When I handed the towel over to** Molly's mum Cindy I explained that Swimming Club organisers came up with the excellent idea of writing the name of the swimmer on the bottom of the towel with permanent marker and that's how I knew it was Molly's. Cindy replied that Molly had hers but when she checked it out Cindy found a somewhat faded Simon W written on it and when I told my oldest grandson Simon Wellings he confirmed he had lost his a fair while ago. All's well that ends well.

...

**Congratulations to the Armidale Bushrangers** Under 11's representative Cricket team, which includes Walcha players Bentley Brennan and Henry Blomfield on their win over Gunnedah last weekend. Armidale mustered 43 runs for a loss of seven wickets where Henry top scored with and unbeaten 11 runs. Gunnedah were all out for 40 runs with Bentley contributing by taking two catches while wicket keeping. Good on ya boys.

...

**Well done to Apsley Arms** 'Head Honcho' Ganesh and his offsideers Anisha and Sami for their hospitality at the pub's footy tipping party held last Saturday where punters enjoyed a few complimentary beverages, oysters and prawns along with a few other sides. Ganesh reckons he would like to make it even bigger and better next season.

...

**The Walcha Bowling Club Fishing Club** headed to Glenbawn Dam last weekend where 13 adults and 3 kids wet a line. Vice President Darren Bird reported there weren't many fish caught and they certainly didn't lower the 96% water level of the pond. Best fish caught was a 52cm Yellowbelly by youngster Toby Rizzi.

...

**Walcha/Uralla Cricket allrounder Peter Mooney** has started the 2023/24 season with a bang scoring 109 runs last Saturday to back up his neat half century in the opening round. Pete is playing in the 3rd Grade team alongside his son Cameron who belted three boundaries on his way to an unconquered 13 runs late in the innings.



## Meetings

**The Annual General Meeting** of the Walcha Senior & District Rugby League Club, will be held at the Walcha Bowling Club on Sunday 5th November 2023 at 3pm. All committee positions will be declared vacant. Any and all parties are welcome to attend.

**Walcha Jockey Club AGM** 7.30pm, Tuesday 14 November 2023 at Council Chambers, Hamilton Street, Walcha.

Agenda:

- Election of officer bearers: President, Vice Presidents (three), Secretary, Treasurer, Patrons (two)
- 2024 Race Meeting
- Financial statements for the previous year

Jim Nivison President.

**Walcha Garden Club** meeting Friday 3rd November at Robert & Suzanne Elliott's garden 'The Folkly', 12743 Oxley Highway, Walcha. Cars depart McHattan Park at 9.30am. BYO cup, lunch & chair. Enquiries: D.Bazeley 0403464865, D.Lisle 0429799083. New members welcome.

**Walcha Support Group Inc.** AGM tomorrow Thursday 26th October 1pm WCCC Rooms Middle St. All Welcome.

## MEMBERS ANNUAL GENERAL MEETING(AGM) 2022/2023 AGENDA



Date: 17/11/2023

Time: 12.00pm

Venue: Amaroo 36N Derby Street

- Attendance – Welcome by Chairperson
- Apologies
- Pecuniary Interests – if any
- Reading of Previous Members Meeting/Actions
- Amaroo LALC Budget 2022 – 2023 and 2023 – 2024
- Receipt of 2022/2023 Amaroo LALC Annual Report including CLBP implementation report;
- Receipt of 2022/2023 Amaroo LALC Audited Financial Statements and Management Letter;
- Election of the Amaroo LALC Board for 2023 – 2027;
- Meeting Closed

## Public Notices

DR GENEVIEVE FREER

Phone 6777 2068 0429 668 583

# High Tea

WALCHA HISTORICAL SOCIETY MUSEUM



**Saturday 4 November, from 2pm**

It's on again. Bring your friends and join us for High Tea at the Historical Museum.

\$20.00 per person • Toys and dolls display • Lucky door prizes

Contact Nerida Hoy 0429 060 740





## Public Notice *cont*

**Remedial Massage Therapy:** Olivia Tickle is available for Remedial Massage treatments every Wednesday 9.00am – 4.30pm from 1/11/23. Appointments can be made by contacting Walcha Physio on (02) 6778 0011.

**Remedial Massage:** Every Tuesday and Friday. Over 20 years experience, working with elite sporting teams and Olympians. Health fund rebates. Contact Brett on 0414 349 625.

### **PRESCHOOL 2024 ENROLMENTS ARE OPEN**



Enrolments are now open for children aged between 3 and 5 to attend Walcha Preschool in 2024. Enrolments are being accepted for children turning 3 before 31 July 2024.

If your child turns 3 after 31 July 2024 then they may also attend if vacancies exist at the time. Unfortunately, these places cannot be reserved for them.

Paper enrolment forms are available at the Preschool and Council offices during normal opening hours. Enrolments can also be completed online by visiting:

<https://www.walcha.nsw.gov.au/community/children-young-people/walcha-preschool.aspx>

An orientation evening will be held during January where Preschool staff will be available to answer any questions you may have.

For enquiries, please call Alice on 6777 2117.

Phillip Hood, General Manager

Walcha Council, PO Box 2, Walcha NSW

### **Walcha Council Closures**

Residents are advised that due to Essential Energy planned power outages these Council sites will be closed at the following times:

Friday 3rd November 2023: 8:30am – 5:00pm

- Council Office
- Library
- Service NSW Agency

Monday 6th November 2023: 8:30am – 5:00pm

- Community Care Office
- Council Office
- Library
- Service NSW Agency
- Community Gym
- Walcha Preschool

Phillip Hood, General Manager

Walcha Council, PO Box 2, Walcha NSW

## Positions Vacant

### **WHS Advisor Walcha Council & Uralla Shire Council**



Are you passionate about Work Health and Safety and looking for a great opportunity to provide your expertise to Walcha and Uralla Councils? If so, we have the role for you.

We are looking for an expert in WHS to advise both Councils and ensure that we develop and implement the necessary policies, procedures and systems to let our staff work in a safe environment every day.

You will be working both in the field and in the office and will hold relevant qualifications or industry experience in Work Health and Safety, and ideally have experience in Local Government.

You will enjoy travel, and visiting construction sites, depots and other Council facilities, and communicating effectively with our staff.

Supported by a friendly and progressive minded Executive team and dynamic General Manager, this is an opportunity that you don't want to miss.

This is a permanent full-time position (35 hours per week) with a (negotiable for the right candidate) starting wage of \$1951.60 (gross per week) based on the Local Government (State) Award 2023.

We also offer all the usual great benefits of working in Local Government; generous Long Service Leave, flexible working conditions, and generous sick leave allowance.

As the role involves travel, the position includes a commuter use Council vehicle, with the option of a leaseback arrangement, as well as mobile phone. If you are considering re-locating to Walcha (it's a fantastic community) there is also the possibility of Council provided housing.

For more information please visit our website positions vacant at <https://bit.ly/3A30YDc>

Applications close Monday 30 October 2023

*Small Council, Big Opportunities!*

Phillip Hood, General Manager

Walcha Council, PO Box 2, Walcha NSW

## Positions Vacant *cont*

### **Employment Opportunity**

Richardsons Hardware and Agriculture Walcha is a retailer of hardware, building supplies and agricultural supplies based in Walcha.

We currently have a vacancy in our business for a suitable team member. The position will involve providing great customer service to our clients be they farmers, builders, DIY and the general public. The candidate should be capable of conducting activities of the running of a hardware and agricultural business such as merchandising, using point of sale software, stocktaking, customer service etc. Previous experience in relation to this would be highly valued. The position could be full time or part time depending on the candidate and would have some good career opportunities.

Interested candidates should forward the cover letter and resume to:

The Manager,  
Richardsons Hardware and Agriculture  
16w Fitzroy Street, Walcha 2354.

## For Sale

**Large round bales** of clean Oaten & Rye Hay, \$220 plus GST. Small bales of Number One lucerne, \$25 plus GST. Phone George 0427 018 493.

## Wanted

**Agistment wanted** for 35 to 40 cows + 24 calves. Please ring Tania on 0427 460 004.

### **CASH FOR LOCAL BOTTLES**



Up to \$1000 for the right bottle  
Walcha/Uralla/Armidale/Guyra

**Phone 0459 799 119  
for a free appraisal**



## church notices



### **ANGLICAN**

No Services Phone 6777 2543 or email: [walchaanglican@gmail.com](mailto:walchaanglican@gmail.com)

### **PRESBYTERIAN**

Walcha Sunday 9.30am

All welcome. Phone 6777 2539.

### **CATHOLIC**

Sunday 10:00am Mass.

# THE APSLEY Advocate

**Editorial and  
Advertising deadlines  
Monday 4.30pm**

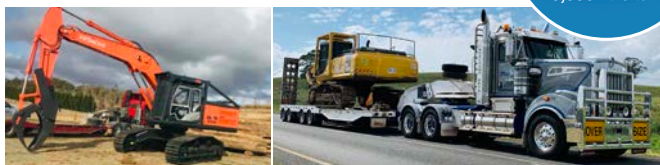
# Marchant

BROS. PTY. LTD. Est. 2000

## WATER CARTING

DELIVERING  
7 DAYS  
A WEEK

WALCHA COUNCIL  
CERTIFIED DOMESTIC  
**WATER CARTER**  
10,000 litre tank



A FULL RANGE OF AFFORDABLE TRANSPORT & EARTHMOVING  
Dam construction/maintenance, stick raking, road building,  
site prep, pipe laying and all timber work.

Check out our website for the full range of machinery,  
attachments and services available

**FIREWOOD AVAILABLE**

**Earthmoving and Heavy Haulage Transport**  
Jason 0427 490 487

02 6777 2024 marchantbros@bigpond.com  
www.marchantbros.com.au

# BOWLING & RECREATION CLUB

**Mon – Wed** 4.00pm – Close

**Thursday 26** 12.00pm – Close

Ladies bowls 9.30am for 10.00am start  
Social bowls 1.00pm

**Friday 27** 2.00pm – Close

**2.00pm** Bingo

**6.00pm** Bistro

- Fresh Prawns with Mango Salad
- Homemade Chicken Kiev
- Ravioli Lasanga
- Normal menu available, takeaway and delicious desserts.

**6.00pm** Tickets available for raffles –  
meat and veg trays

**6.00pm** Free Bingo

**7.00pm** Raffles drawn & Members Draw

**Saturday 28** 11.00am – Close

**6:00pm** Bistro

**2 – 4pm** TOSS THE BOSS

**Sunday 29** 11.00am – Close

**12.00pm** Bistro open. Children U/10  
kids meal free with an adult order

**12.00pm** Meat, fruit and veg raffles

**1.00pm** Raffles drawn

**MEMBERS  
DRAW  
\$450**

YOU MUST BE A MEMBER FOR  
2023/2024 TO BE ELIGIBLE TO WIN

**PASTURE WONDERLAND  
THIS WEEKEND**

1st game starts at 10.30pm

**Melbourne Cup Luncheon  
and fashion parade**

7 November

**NPL POKER**  
This Saturday 28th October  
from 3pm

**Christmas Functions**

Taking bookings  
Big or small

Choose from finger food, sit  
down meals, smorgasbord or  
themed food.

Do you live in Walcha Shire? If so you **MUST** be a member to enter the Club  
Social Membership ..... \$15 – Full Membership \$105. PHONE 6777 2077

**FOR ALL YOUR EARTHWORKS  
TRANSPORT AND ELECTRICAL NEEDS**

**ALL ASPECTS OF RURAL, COMMERCIAL & CIVIL WORKS**



- Freight & Transport • Machinery Float • Stick Raking
- Road construction and maintenance • Trenching
- General Earthworks • Drilling • Mulching
- Dam maintenance and construction
- Erosion Control • Site Preparation • Electrical Works

Ian Notley 04188 29188 • Mark Notley 0422 637 686

www.eteservices.com.au



Wayne Hoy: 0427 281 060  
Matthew Hoy: 0427 322 640  
Aaron Bullen: 0409 776 340

**SPRAYING  
SOWING**

**EXCAVATING  
EARTHMOVING**

*GPS & Auto Steer Equipped*

- Komatsu PC300 Excavator
- Cat 324 Excavator
- Cat D6N Dozer
- 2000ltr Quikspray Trailers
- Casotti's
- 4 x4 Tip Truck
- 4x4 Trucks & Boomsprays
- Full auto Rate Control
- GPS & Autosteer
- 4x4 Tractors GPS Equipped
- 20 & 24 disc Williams Seeders
- Fencing & Rural Contracting