

# THE APSLEY Advocate

CIRCULATION 1810 – P 02 6777 1111 F 02 6777 1112 wtc@walchatelecottage.com.au walchatelecottage.com.au

18 October 2023

## NSW Womens Sandgreen titles here this weekend

By AJ Cross

Walcha Golf Club will host the 2023 NSW Womens Sandgreen Championships this weekend where 94 competitors will represent 25 clubs including 28 players from the host club.

Nyngan have the next best representation with 11 while Barraba, Coleambally, Wauchope and Werris Creek all have 5 players registered to play.

Last years Champion Sheree Lokan from the Iluka Club will be back to defend her 2022 title. Former Walcha resident Maree Townsend is returning from Gilgandra to play whereas Fay Schliebs has a fair trip in front of her before she represents the Commercial Albury Golf Club.

Walcha Club Champion Simone Sweeney has indicated she will tee off over the weekend as will former club champions Cheryl McDonald and Margaret Davidson.

Also flying the Walcha flag are Alison



Debbie Richards, Julie Hoad, Rose Baumer, Julie Presnell, Pauline Carter, Jenny Lisle, Margaret Davidson and Donna Martin are all playing in N.S.W. Sandgreen Championships this weekend

Cameron, Barbara Mulligan, Caroline Street, Debbie Richards, Donna Martin, Jenny Lisle, Jill Burnell, Julie Hoad, Julie Olrich, Julie Presnell, Katie Smith, Lorraine Walshe, Lyn Laurie, Margaret Higgins, Margaret Parsons, Pauline Carter, Penny King, Polly Locke, Robyn Salt, Rose Baumer, Ruth Fletcher, Sally McCormack, Sally Rutherford, Sue Partridge and Vicki Heffernan.

The tournament is played over 36 holes of stroke play, 18 holes on both Saturday and Sunday including scratch and nett events over two divisions which also incorporates a scratch and teams event.

While the championships are in progress the Walcha Golf course is closed to everyone else.

Best of luck to all players.

**Drones In Agriculture NIGHT**  
**TUESDAY 24 OCTOBER 2023**  
6:30pm - 9:00pm  
Walcha Bowling Club  
FREE Event + Dinner  
**Speakers:**  
• Kieran Croft - Croft Dusting Drones  
• Matt Sharpham - EnviroAg Drones  
• Brooke Watts - Bralca  
• Emma Clifton - DPI Young Farmer Business Program  
• Mitch Scrivener - Lyon Ag Drone Solutions  
• Katie Barnett - Armidale Node (SQNNWS Hub) Drone Project Update  
• Producers using Drones on Farm  
**RSVP 22 OCTOBER 2023:**  
katie.barnett@glenrac.org.au  
(02) 6732 3443

**Nutrien Boulton's**  
**This Friday 20 October** AuctionsPlus

A/c RF & PM King  
**120 EU Cows & Calves**  
A/c Wirribilla Farms  
**150 Angus Hfrs – 350kg**  
**60 Angus X Hfrs**  
A/c BDN Partnership  
**170 Mixed sex Wagyu X Angus yearlings**

**LIVESTOCK WANTED**  
**250-300 Merino Wethers**  
Contact Simon Newton  
0467 660 320

**LIVESTOCK FOR SALE**  
**80 1st X Border/Merino Maiden ewe hoggets**  
Contact Simon Newton  
0467 660 320

**Premium Performance for Cattle**  
**Treats gastrointestinal worms cattle tick and sucking lice**  
**99.8% EFFICACY**  
**NEW DECTOMAX**  
doramectin and levamisole injection  
Call 6777 2588  
6 Aberbaldie Road Walcha  
www.wvs.com.au  
**zoetis**  
Australia's FIRST DUAL ACTIVE injectable drench for cattle



# OK EARTHMOVING

## *Specialising in road construction & maintenance*

• Stickraking • Dam building • Erosion works



Bulldozers • Excavator • Tip-truck • Vibrating Roller

**PH 6777 7430 FAX 6777 7448**

**PETER O'KEEFE: 0429 944 821**



***Our brand new CONE CRUSHER has arrived....which means that we now have 20mm roadbase ready to deliver!***

***20mm roadbase is perfect for your driveway, stock yards, airstrip...etc***

***NO JOB TOO BIG OR SMALL!***

***We have a variety of products that will suit your every need: big rocks, small rocks, rocks of any size!***

✉ SCOTT@BROOKLYNQUARRY.COM.AU

☎ 0434 011 570

📍 1643 OXLEY HWY, WALCHA RD. NSW  
(BY APPOINTMENT ONLY)

🌐 WWW.BROOKLYNQUARRY.COM.AU

# around the traps



By SIMON NEWTON

The westerly wind on Monday blew winds of up to 50km and really put a dent in any optimism regarding the season. The best spot was to be inside out of the wind. It was the last thing our countryside needed. The district appears to be going off and the further east you head in our district the drier and browner it looks. I'm sure like myself that everyone is sick of looking at forecasts and it appears that a change of decent rain is a fortnight out and then it just disappears all together. All I can see now is no moisture for the next week and I'm still hopeful despite predictions that a change in the season is not too far away.

The prime minister Anthony Albanese will be fighting to keep his job after the majority of the Australian people voted NO in the referendum on Saturday. The division amongst the Australian people is now greater than ever because of this vote and Mr Albanese has a lot of work to do. The answer isn't to spend more money on a growing issue but figure out where it is going and the best way forward to help. Clearly what the government has been doing isn't working and the 500 million or so they spent on the referendum could have been better spent elsewhere on stemming some of the major issues the First Nation communities are faced with, and a path forward.

Speaking with major buyers within the sheep and lamb business they all believe we have seen the bottom of the markets. They believe both markets will be in better shape next year and clearly when Wagga are forecasted to yard 70,000 sheep and lambs for the next 8 weeks the numbers are too much for the processing system to handle. It's a perfect storm for processors as they blame the restockers as the ones that dictate the market values and yes, they do which is all driven by the weather.

If you are intending on getting kill space this year for cattle then you might already be out of luck. Space looks to be booked out as far as late January and without any rain more pressure will mount on the saleyards. Feedlots, although they are buying cheaper cattle look to be also feeling the pressure with contract prices for their kill cattle further reducing while the cost of their ration is rising. Domestically the product is selling and selling well but the export markets are still sluggish, although the shining light is the ground beef with exports on the rise into countries like the USA. Currently both Australia and the USA are at the opposite ends of the drought/recovery cycle with the price gap never so wide over the past decade. These recent shift in values has brought Australian beef prices much closer to Brazil and Argentina.

The price of hay won't be getting any cheaper as the longer the dry goes on and the more likely it is to get dearer. The cost of fuel is a major component to the cost of getting hay made and delivered, even if you can buy the hay from the surrounding areas, the price per ton in on par with the southern hay. The main issue is that there is a lot of poor quality hay about. Do your homework and try to buy hay with a feed test and make sure it doesn't have any nasty weeds and no chemical residues. The majority of the hay made last year looks cheap, but it is also low in protein as it was such a wet season.

Tamworth yarded 1175 hd of cattle with the light restocking and lighter condition cattle selling to softer trends. Weaners back to the paddock topped at 222c/kg for steers while the heifer portion made to 174c/kg. Feeder steers topped at 230c/kg while the heifer portion sold to 189c/kg. Domestic kill heifers topped at 206c/kg and cows made to a top of 178c/kg.

Last Thursday Wagga yarded 70,000 sheep and lambs with consignments coming from as far away as Longreach and Broken Hill. The extra numbers put a lot of pressure on the market with lambs selling to cheaper trends but still quite well. Old season lambs sold between \$116-170 while new season lambs made from \$114 -180. Mutton sold to weak competition, heavy mutton fell by \$50/hd with killable weight mutton selling between 80-104c/kg carcass weight.



# New home lending specialist for Walcha

The Regional Australia Bank continues to show its commitment to small communities, with the recent appointment of Karen Frost to the role of Home Lending Specialist.

Karen has been with the Regional Australia Bank for 11 years, and in the banking industry for 25 years.

Whether it be a loan for your first home, your dream home, or an investment property, Karen is able to schedule face to face interviews with you in Walcha at a suitable time to discuss your lending requirements.

"As a valued member of our Regional Australia Bank team, Karen has access to competitive products and pricing," Business Development Manager, Troy Johnson said.

The Walcha branch is open five days a week from 10am to 3pm. "We like to keep banking local and the Regional Australia Bank has targeted 45 postcodes over the coming five years as a part of our Regional Expansion Program," Troy explained.

So if you would like to enquire about home loans, Karen can be contacted on 0417 129 578 or [kfrost@regionalaustaliabank.com.au](mailto:kfrost@regionalaustaliabank.com.au)



# Possum Magic

Last week Walcha Central students in K-2 enjoyed a day excursion to Tamworth.

After getting over the excitement of the bus trip down, they visited the Marsupial Park where they enjoyed a walk around, dodging the parrot who steals earrings, talking to the cockatoos and touching an emu egg. This was followed by a play in the amazing playground in the park.

Then it was off to Possum Magic in the Capitol Theatre. Students were lucky enough to be sitting up the front of the theatre, which allowed them an amazing view of the costumes of the actors and actresses. Teachers and students were mesmerised at seeing one of their favourite picture books come to life and the incredible magic tricks which made the show.



## Stock and Property Watch

[www.nutrienharcourts.com.au](http://www.nutrienharcourts.com.au)

## Magnificent Views over Walcha



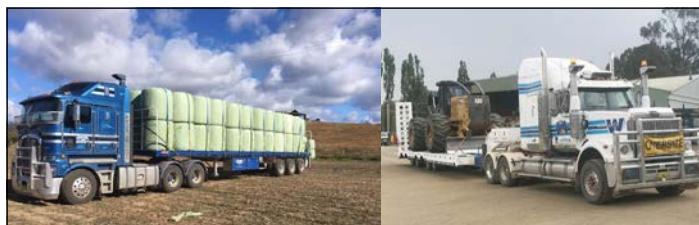
- Brick and tile three bedroom home on a large block with panoramic views
- Large northerly facing lounge with ducted reverse cycle air conditioning
- Timber kitchen with an abundance of cupboards, electric wall oven and ceramic cooktop
- Large bathroom with bath/shower/vanity and separate toilet
- Formal Dining room
- Covered back verandah
- Front verandah has enclosed card/games room with double glazed windows
- Double garage and storage area



**P.O.A.**

Nutrien Boulton's Walcha ■ 3n Derby Street Walcha ■ 6777 2044





45ft flat top • 45ft single deck cattle float • 26mtr B Double  
19mtr mini B Double • Low Loader available for hire



**BRIAN**  
**Smith**  
**TIMBER**  
**TRANSPORT**

Call us for  
your large  
Transport  
needs

**WALCHA**  
**02 67772126**

**Bonnie Smith 0429 772 077**  
**Brian Smith 0427 780 216**

## **WALCHA JUNIOR CRICKET** **2023/24 SEASON**

### **WOOLWORTHS CRICKET BLAST**

For Boys and Girls aged 5 – 10. Your kids will make new friends, learn new skills and experience the thrill of being part of a team



### **JUNIOR CRICKET – UNDER 9'S TO UNDER 15'S**

Hardball competitive cricket in the Armidale & District Junior Cricket competition.

Fixtures to be played Saturday mornings across the summer.



# **Discounted locals ticket**

## **Walcha Motorcycle Rally 17 & 18 November**

The Walcha Motorcycle Rally is fast approaching, with visitors attending from far and wide. With an exciting program of events at the showground, now is the time to grab your discounted locals ticket and be part of the fun. This is only for those who reside in the 2354 postcode area and will give access to the showground from Thursday night through to Saturday night.

The discounted tickets are \$15/person (Kids 16 & Under are FREE when attending with paying supervising adult). They are NOT AVAILABLE AT THE GATE and must be purchased either online or at Council reception.

To purchase online: -

- Go to [www.walchamotorcyclerrally.com.au](http://www.walchamotorcyclerrally.com.au) and click BUY TICKETS
- Select 2 DAY RALLY PASS (discount only applies to this ticket type)
- Enter the number of tickets you wish to purchase
- Enter Discount Code RALLY2354 (all in capitals)
- Please note:
- Children 16 and under are free if accompanied by a paying supervising adult
- The discount code only works on the 2 Day Rally Pass and allows you to attend all days.
- Photo ID, showing proof of your local 2354 residency, is required
- If you pay at the gate then normal fees will apply (\$35 for the day or \$60 for all days)

Our incredible MC, actor and singer Ben Mingay, can't wait to get back to Walcha again this year and will entertain and guide us through the exciting program. At the showground there will be new stunt shows, skills demonstrations, a motorcycle show & shine, hilarious postie bike soccer and grass track derby, barrel racing, enduro-x, BackTrack dog jumping, a multi-bike challenge, kids strider bike challenge, tyre throwing competition, woodchopping, exhibitors and trade stalls, a motorcycle swap meet, evening live music, demolition derby and more...

In town on Saturday 18 November the motorcycle street procession will thunder through at 11am with a vintage car display also being held near the Farmers' Market.

This year's event falls on Australasian Women's Ride Day (AWRD) and there will be a host of activities for the women riders also.

To view the program and to purchase your local tickets go to [www.walchamotorcyclerrally.com.au](http://www.walchamotorcyclerrally.com.au)

The full program and street procession route will be printed in the Advocate closer to the event date.

Please note: The Oxley Highway will be open Thursday 16 to Monday 20 November, so will not impact this event.



*Bugsy Plowman Photography*



# NSW selection for Baz and Bill

By AJ Cross

Two local cricketers, Barry Hoy and Bill Duncan, have been selected to represent NSW at the Australian Veterans over 60's Championships in Perth later in the year following the NSW titles at Dubbo last week.

Representing New England, Hoy was named in the NSW Number One team while Duncan was picked in the NSW Number Two side after playing four games last week.

Also in the New England team was local Stephen Haslem along with former Walcha players Steph Sweeney and Craig Stoddart.

After winning their opening game against Port Jackson Blue, 7/142 to 139, New England were belted by Macquarie Valley, 3/252 to 128, before going down to Central West, 161 to 136, in their third match and then in the playoff for fifth and sixth position, New England extinguished the Western Wildfires, 1/100 to 98.

Individual highlights in the opening encounter was a game high 40 runs to Sweeney, 35 retired to Hoy who also executed two stumpings and a catch.

Sweeney continued his good form into game two, top scoring with 22 runs while Stoddart compiled 16 runs and took a wicket.

In game three Haslem remained unconquered on 32 runs and Duncan racked up 21 with both players snaring a victim each.

Haslem went on with it in the playoff game amassing an unbeaten 30 runs to finish highest run getter of the five



*Craig Stoddart, Stephen Haslem, Bill Duncan, Steph Sweeney and Barry Hoy played at NSW Vets Over 60's Championships at Dubbo last week.*

players for the week with 68 runs just ahead of Sweeney on 67 who, along with Hoy and Stoddart, didn't bat in the final game.

Another local cricketer, Peter Boyd, has been playing in an over 70's tournament this week being held in Armidale and Walcha.



## EVE FLOWERS

*Gorgeous fresh flowers  
delivered to Walcha, Monday to Friday*

*A lovely seasonal selection direct from our farm and  
fellow Australian growers*

*Specialising in unique and sustainable floristry  
for weddings, events and funerals.*

Florist open 6 days  
Phone 0409 566 099  
or order online at [eveflowers.com.au](http://eveflowers.com.au)  
45 Bridge St Uralla 2358



- 1.7 ton Excavator
- 1.8 ton Bobcat
- Kanga
- Car Trailer
- Log Splitter
- 7 KVA Generator
- Carpet Cleaner
- Jackhammer

### FIRE WOOD

*Give us a call to save your back with our  
1500 psi log splitter*

**Andrew: 0427 549 748**  
**Toni: 0421 972 354**

# Mayoral Column

## PROJECTS UPDATE



### OFF CREEK STORAGE

The long awaited stage to begin filling the recently completed off creek storage (OCS) has seen around 80 megalitres or 25% of capacity pumped into it to date. While this is a long way off ideal, licencing and compliance issues have added time to the progress. The complexities of legislation and rules surrounding water, especially as our raw water source fits into the Murray Darling Basin never ceases to amaze and frustrate me. Still, after many years of frustration we have a new storage so maybe the process works. Another hurdle has been supply chain issues around pumping infrastructure delivery which has delayed our first fill. Having said that, we currently have 80 megalitres more in storage than we did at the last drought and despite this project pushing its timeline it still sits within our allocated grant funded budget – so no cost to ratepayers. We will soon have an open day for anyone who wishes to see the finished product. I believe it is a very impressive outcome for all of us.

### RIVERVIEW

Following up on the initial communication to our community in relation to the Riverview Aged Care Hostel and the path for Presbyterian Aged Care to divest themselves of this facility, Walcha Council has been analysing the financial position and risks of taking over their operations. Obviously, this needs to be a thorough process and we need to understand all implications of this move before we can initiate a public meeting to inform everyone of the outcome of that review. This meeting will be held as soon as practical and all views on the viability of this move will be taken into account. The long term viability of Riverview is of the utmost importance and that needs to be weighed up against the critical role it plays in our community. In the end this must be a decision of the brain, not the heart.

### DERBY STREET

Another long awaited project to deliver is the rehabilitation of Derby Street, or where Thunderbolts Way approaches town to the north and south. A long time in its design phase, partly due to funding constraints, the final concept is almost at the point of being put out to public display. This project not only upgrades the road surface but entails kerb and gutter along the verges and a focus on better drainage. Practicality and beautification also forms part of this rehabilitation and while the technical design is rather constrained the “pretty bits” that are there for aesthetic reasons are open for input. This will be another project that will go out to the public to view and comment on in the near future. Keep a look out in this fine publication for that to happen. Obviously there will be disruption during the works but the long term outcome will bring major benefits to our community and travellers.

### OLD HOSPITAL

This old chestnut raises its head whenever poked. It also seems to be the major issue that most politicians and bureaucrats step around. Thankfully after raising it with The Hon Adam Marshall he has become a strong advocate for an outcome and is making representation at the political level. Along this path it must be remembered that the facility is owned by Health NSW, while currently under a land claim which is still yet to be resolved. Health have full responsibility to maintain the building and surrounds. To say the maintenance has been inadequate would be obvious and now leaves our community with a derelict building that impacts our town negatively. Frankly, it's an eyesore. Many figures are bandied around relating to the cost of rehabilitation of the site, ranging from \$2m to level the site to \$5m to redevelop the building. I don't believe that anybody should be expected to take over the site with that cost hovering over a good outcome that could benefit our community. There are a couple of opportunities moving forward that could benefit the wider community and bring a solution to this ongoing problem. Governments constantly talk about a severe lack of housing, especially social housing, so our expectation should be that any opportunities to assist to provide solutions are pursued.

## RENEWABLE ENERGY

While public engagement with this massive issue around Walcha ebbs and flows, it sits in the background all the time and costs Council both time and money to work through the “process”. The fact that Winterbourne Wind (WW) project currently sits separate to the New England Renewable Energy Zone (REZ) complicates Walcha's position and while the constant line from the Department of Planning (DP) is that they understand the complexities for us, it leaves us navigating through this on two fronts.

Firstly, the Voluntary Planning Agreement with Vestas in relation to the WW project sits with BAL Lawyers that represent both Uralla and Walcha Councils. The cost of this engagement is covered by Vestas. This document basically covers the community benefits payable to the respective councils and how it will be administered. Like most agreements there is a bit of to-ing and fro-ing to reach a mutually acceptable outcome, but the implementation of this agreement will generate benefits to Walcha that come from hosting any projects. The yearly figure of \$750,000 indexed to CPI sits in the vicinity of what is becoming the expected amount and is comparable to the 1.5% of build cost that the Coalition of Renewable Energy Mayors has adopted in its statement of expectations. This document will be put on public display before endorsement occurs.

The second part is negotiating with Energy Corporation (EnCo) around the benefits and challenges of the REZ. At this stage we are anticipating \$250,000 a year over 3 years to cover the Council costs to prepare for the implementation and impacts of that part of the REZ. When and if any REZ projects in our LGA gain connection there will be fees paid to the community. EnCo control the route of the contentious transmission lines and while much of this is in the formative negotiations stage it will move quickly over the coming years.

### WALCHA CONNECT

7am on the 8th of November sees a free breakfast at the Walcha Bowling and Recreation Club to allow local businesses and agri-businesses to access and interact with service providers that can assist in many areas of business continuity. Governments recognise the importance of small businesses to the economy and this will be an opportunity to network and engage with these providers. There will also be an opportunity to discuss impacts of the upcoming motorcycle rally. There is no shortage of information easily available on this and it's been timed to keep interruption to your business at a minimum. Register with Council by 1st November.

### ELECTRIC VEHICLE CHARGER

Anyone going past the Telstra building in Apsley Street will notice NRMA have installed two EV chargers – the first for Walcha. There has been some comment on the location of these and who will pay the electricity bill. Council only facilitated the access for these, and the NRMA chose the most suitable site as there are many requirements including safe access, power supply, room and proximity to facilities. This site ticked the most boxes and was therefore chosen by NRMA, who also currently pick up the tab for the installation and power.

## thumbs



- Thank you to the wonderful ladies at the Quota Club.
- A huge thumbs up and thank you to the Walcha community for the warm welcome we have received, to everyone who has popped in to say hello and welcome us to Walcha. We really appreciate your support and look forward to surprising you with new and unique pieces at our Wood Turning Gallery. Also, to all the ladies from the Telecottage, who put together a couple of wonderful articles for us as we kicked off a few weeks ago, THANK YOU.
- Congratulations Mel Ahern on his retirement. He was bus driver for me when I went to school and got my children during their schooling as well. We hope he has an enjoyable retirement.
- Thank you to the thoughtful person who removed the road kill carnage from Aberbaldie road last week. Very much appreciated.
- To Jo Wicks for her compassion in assisting a homeless man with a hot meal. You are a very special lady.



# Annie qualifies for State Athletics



Annie, Jessica, Lachie and Grace getting ready to compete



Annie celebrating her victory on top of the podium

Late last week, Annie, Grace S, Lachie and Jessica travelled to the Sydney Olympic Park Athletic Centre, representing St Patrick's Primary and the Armidale Diocese at the Polding Athletics Trials. The team were hoping to gain selection in the Polding Team which will be competing at the NSW PSSA Athletics Carnival at the same venue on Wednesday 25th and Thursday 26th October. The students competed against the very best athletes from all of the Catholic Primary Schools in the northern half of New South Wales in a number of field and running events.

Unfortunately at the last moment, Jessica had to pull out of the running events due to an injury but she was placed 16th overall in the Junior Girls Discus. Grace S came 8th overall in the Junior Girls

Shot Put, while Lachie gained 15th in the Senior Boys 1500 metres.

Annie had a very successful event as she placed 7th in the Senior Girls 1500m and 12th in the 200m. But it was in her favourite event, the 800m, where Annie excelled as she won the Senior Girls 800m with a time of 2.31.83, which was her personal best time by over nine seconds. Annie should be proud of herself knowing that she is the fastest Senior Girl in 800m from all of the primary Catholic schools across six Dioceses.

Annie, we wish you all of the best in the 800m trials on Wednesday and hopefully we will be cheering you on in the 800m final on the following day.

**Pitt Son's** REAL ESTATE & LIVESTOCK

SAM PAYNE 0428 667 404 | ANDREW BLOMFIELD 0428 667 402  
RON VINCENT 0427 775 821 | TROY DAVEY 0427 157 557

FOR LATEST  
UPDATES



6777 2000 | [www.pittsons.com.au](http://www.pittsons.com.au)

## CHARMING HOUSE PERFECTLY LOCATED

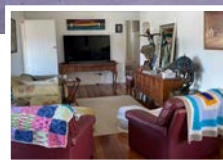
A SHORT WALK TO TOWN CENTRE



- Two bedrooms
- Open lounge plan
- Dining and kitchen
- Cosy wood fire
- Generous shed with endless possibilities

~~\$380,000~~ **\$370,000**

## GREAT VIEWS OVERTOWN



### This 3 bedroom home with plantation shutters

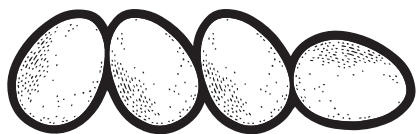
- Renovated kitchen with large gas stove and walk-in pantry
- Wood fire heating plus reverse cycle aircon
- Lovely loungeroom with polished floors
- Bathroom enjoys both bath and shower
- Lock up garage plus a carport

~~\$380,000~~ **\$360,000**

# MARKETS THIS SAT!!

*Join us*

FOR AN ARRAY OF  
SEASONAL PRODUCE,  
FRESH COFFEE,  
SWEETS & PASTRIES,  
BACON & EGG ROLLS,  
PLANTS AND TREES  
PLUS MUCH MORE!!!



GOT ANY **EXTRA** PRODUCE?\*

BRING ALONG YOUR  
HOME-MADE CONDIMENTS,  
BAKING, FRESH PRODUCE,  
PLANTS, EGGS AND SO ON TO  
THE COMMUNITY STALL WE CAN  
SELL THEM ON YOUR BEHALF

\* SEE TERMS AND CONDITIONS ONLINE



**NEW STALLHOLDERS WELCOME**  
WALCHAFARMERSMARKET.ORG.AU

## what's the goss

with AJ Cross



**It's hard to believe that a dual** state Golfing champion has finally won his first individual event after Peter 'Granite' Norbury racked up 40 stableford points to win the Weekly Wednesday Wackers competition at Uralla last week. 'Granite' who has won NSW Sandgreen Nett events with Phil Perry and Wayne Brennan reckons it's his maiden sinngles trophy.

...

**Congratulations to local bowler June Hayes** on winning the New England District Seniors Lawn Bowls Championship at Uralla last Wednesday. June now progresses to the Zone 3 Regional titles where she will be up against Gwydir, Central North and Namoi champions at Lightning Ridge in November. Good luck June.

...

**Former 'Quiet Valley' Riamukka resident** and now Mudgee School teacher Andrew Laurie was a member of the Mudgee over 30's Touch Football team that defeated Wollongong 4-3 in the final of the NSW Country Touch Championships at Mudgee last weekend. Mudgee belted Maitland 6-0 in the semi finals to advance to the 'Big Dance'. Good on ya Andy.

...

**One thing is for certain Stephen 'Wilba' Haslem** must certainly like playing cricket after he played five games in six days last week. 'Wilba' played for the New England over 60's in the NSW Veterans Championships at Dubbo taking the field four days out of five (rest day Wednesday) and then backed up to play for the Walcha/Uralla 3rd Grade team on Saturday. Not a bad effort Wilba.

...

**If you were wondering who has been playing cricket** at Peter Fenwicke Oval this week, an over 70's tournament is in progress both here and in Armdale. Tomorrow is the last day where local player Peter Boyd was hoping for a home game after playing for Tamworth in Armdale on Monday and Tuesday.

...

**Congratulations to Barry Hoy and Bill Duncan** on their selection in the NSW over 60's No 1 and No 2 cricket teams to play

in the Australian Championships in Perth in November following the NSW Veterans tournament at Dubbo last week. Way to go 'Baz' and Bill.

...

**The Apsley Arms Footy Tipping Party** is on this Saturday 21 October from 12 noon to 4pm and as there was no party in 2022 tipsters from the past two seasons are invited to attend.

...

**Former Walcha residents Rodney and Jane Natty** currently live in Bairnsdale Victoria where they experienced some extreme conditions within the space of three days recently. First up it was a bushfire followed by flooding the next day and then a minor earthquake 24 hours later. It would certainly keep you on your toes anyway and thankfully Rodney and Jane are all good.

...

**Pakington Street the 'Walcha Wonder Dog'** ran second at the Dubbo Greyhounds last week and now has racked up 3 wins, 4 seconds and 2 thirds to give him a 50% place record from his 18 starts which has earned him \$10,605 in prize money.

...

**Last Saturday Lagoon Street Legend** Stephen 'Normie' Goodwin purchased a Saturday Telegraph, probably to study the form of the horses running in the Newie 777's amongst other things. When he got the paper home he thought it looked remarkably like the one he had bought the day before. Sure enough 'Normie' then had two copies of the Friday 'Tele' which didn't go unnoticed by his much better half Barb.

...

**On the subject of the Newie 777's** no less than five punters were still left in the competition after 'Alligator Blood' saluted the judge at Caulfield and 'Think About It' got up at Royal Randwick, when 'Steady Ready' won at Eagle Farm. The trio of Anne Martin, 'Red' Hoy and Shane Carter shared the cash jackpot of \$550. Sadly Peter Sendall and AJ Cross also had picked the first two winners but when their choice in the third race 'Devastating' ran third they were devastated!



Don't forget to call into the Telecottage and pick up a box to fill for a child in need this Christmas as a part of Operation Christmas Child. Boxes are due back by the end of October, so they can be delivered in time for Christmas.



## At the 19th

A three way countback was called for to decide the winner of the monthly Stroke Medal round played for a trophy donated by Cheryl McDonald last Sunday where Col Berry got the nod over Angus Warden and Neil Dark after all three players carded 65 nett.

Best scratch score was registered by Cheryl McDonald who shot a seven over par 78 off the stick which equated to a 68 nett the leading A Grade score.

B Grade went to Col Berry after he counted out Angus Warden who collected the first sweepstakes prize, whereas Neil Dark won C Grade.

The remaining sweepstakes went to Doug McDonald 66, Allan Green 67 and Mal Ballard 68 which wasn't a bad effort considering the former 'English Wrestler' finished with the 'Coveted Pink Shirt' for most putts after his 37 jabs. Former Club Champion Wayne Brennan engaged his flat stick on 24 occasions to win the putting competition and he also carried the longest A Grade drive.

Long drives sponsored by Tony 'Backhanded Larry' Asmus also went to Donna Martin (B) and Julie Presnell (C).

Sharpest shooters at the pins were Owen Presnell (3), Barry Hoad (9), John McLaren (16) and Col Berry (18).

Club secretary Jenny Lisle accumulated 21 stableford points to win the weekly 9 hole competition last Saturday comfortably clear of Margaret Parsons on 18pts who hit the most accurate tee shot on the 16th hole.

This weekend is the 2023 NSW Womens Sandgreen Championships where the course is closed to everyone not competing in that tournament.

## Wednesdays Golf

Last Wednesdays golf was the second week of the Secretary's Eclectic playing stroke for Janie Fenwicke's trophy.

Penny King was our winner with a magic score of 65 nett. Janie also kindly donated a runner up trophy, which was won by Marg Higgins again with another great score of 67 nett.

Marg also went onto win the overall Secretary's Eclectic over the two weeks with a total of 55 points. Congratulations Marg.

Sweepstakes was won by Cheryl McDonald with a 71 nett, Cark Street, 71 nett, Pauline Carter, 72 nett and Barb Mulligan, 72 nett.

Nearest the pin on Hole 3 was Simone Sweeney and Julie Hoad had a brilliant second shot on Hole 18.

Today is the NSW Golf Women's Medal District playoff being played at Guyra, and we wish our girls the best of luck. Our A Grader is Simone Sweeney, B Grader is Lorraine Walshe and C Grader is Lyn Laurie.

Here at Walcha, today is a par event playing for Cathy Lisle's trophy and the weekend sees us hosting the NSW Sand Green Championship with around 100 players from over 20 clubs throughout NSW.

## Tennis

Round 1 of the 2023 Spring Comp was played on Tues 10th Oct. We had a full complement of players with all courts full.

Bolt: Hyde Thomson, Ryan Bagnall, Kathryn Smith and Michael Luchich drew with Millman: Todd Whillock, Pippi O'Brien, Adam Barillaro and Jonathon Burgess 29 all in a fantastic close match.

Deminaur: Michael Sweeney (floating for D A Locke), Ella Harbermann (floating for David Clark), Graeme Wall and Safina Ireland drew with Ebdon: Dennis Wall (floating

for David Sweeney), Craig Ireland, Trevor Gibson and Roxanna Mathews 26 all in another hard fought match up. Popyrin: Ed Blomfield, Steve Blake (floating for Matt Ireland), Braedon Kommeran and Troy Tape defeated Purcell: Michael Lockyer, Chris Bruce, Andrew Blomfield and Tommy Lestrade (floating for Peter Tape) 36 to 14.

A great night of Tennis was had with lots of laughter and plenty of great rallies. Thanks to our floaters as always. The next Club meeting will be held on Mon 13th Nov at 6.30pm. All members are welcome to attend. See you all at the net soon.

## Bowls

**Dads Army:** The good playing conditions saw sixteen players turn up on Thursday afternoon which allowed two games of triples and a game of pairs to be played.

The winners were: Mick Bullen, Geoff Salt and Mark Hogan defeated Brian Goodwin, Peter Hayes and Warwick Hogan. Barry Hoad, Zari Andrews and John Watts defeated Neil Dark, John McCormack and Noel Goodwin in the triples and Garth Clare and Matt Andrews defeated Barry Kliendienst in the Pairs.

The chooks were won by Mick, Geoff and Mark and the raffle was won by Bruce.

Twilight: The weather was very cold on Friday afternoon for the twilight comp.

Week two again saw a full complement of bowlers thanks to the number of "fill ins" that played.

Team 8 was all set for their second game when their opponents (team 11) scored four shots on the last end to win by a shot.

Team 13 was all smiles after they defeated Team 4. No player turned up in a "Black Friday" shirt, so next week we are looking for a shirt BRIGHTER than "Frog".

**Draw for this Sunday 12:00 start:**

Pairs - G.Bird & S.Goodwin v J.Byrne & G.Marshall.  
A Grade Singles K.Goodwin v S.Bath marker G.Clare.

## Ladies Bowls

Walcha Ladies Singles Bowls Champion June Hayes is the New England District Seniors Singles Bowls Champion after winning the District event held in Uralla last Wednesday. This qualifies June for the Regional Play Offs which will be held in Lightning Ridge on the 10th and 11th November.

Last Thursday eleven ladies attended Bowls in glorious weather conditions and we played a game of pairs and triples the results being in the pairs Marg Tickle and Deb Richards defeated Jan Cross and Marg Morris 13-7 while the triples Carmel Ryan, Rosie Aitken and Lyn Burnell. Esther Hunt had a convincing win over Ellie Pullen, Janice Rizzi and June Hayes.

Social bowls this week followed by our Monthly Meeting.

## Cricket

**Walcha/Uralla v Ex Services 2nd Grade**

<u>Walcha/Uralla</u>	
E BLOMFIELD lbw O Al Rahman.....	7
J GRILLS b W Roberts .....	0
D BOYD b N Nish .....	31
S RAFFERTY lbw N Chandimal.....	10
N ENDICOTT c N Chandimal.....	5
G YOULL b N Nish .....	16
C BOYD b A Jayawardene.....	6
J SHERAIN b A Jayawardene .....	0
P FREWEN c S Islam .....	5
B MANSFIED n.o.....	11
M HARPER lbw N Nish .....	0
Total 106. Extras 15. Bowling (overs/maidens/runs/wkts)	
W Roberts 6-1-1-23, O Al Rahman 3-0-1-19, N Nish 7-4-0-3-16, N Chandimal 3-0-2-14, S Jayawardene 4-1-2-15, S Islam 2-0-1-13.	
<u>Ex Services</u>	

N CHANDIMAL c C Boyd b Frewen.....	3
N NISH c Sherrin b Frewen .....	22
N WICKIAMTHLAKE r.o B Mansfield.....	0
O AL RAHMAN b C Boyd .....	16
S ISLAM b Blomfield .....	1
T VOIGHT b C Boyd .....	17
M RATAN lbw Blomfield .....	4
K ASIF b FREWEN .....	0
K WEERASINGHE b C Boyd .....	5
A JAYARWARDENE n.o.....	1
W ROBERTS lbw Harper.....	3
Total 93. Extras 21. Bowling (overs/maidens/runs/wkts)	
M Harper 7-3-3-1-12, P Frewen 8-2-3-19, J Sherrin 8-1-0-23, J Grills 3-0-0-7, C Boyd 8-0-3-17, E Blomfield 7-5-2-5.	

**Walcha/Uralla v Easts 3rd Grade**

<u>Easts</u>	
M MORAN c S Haslem b Swan .....	0
M BISHOP c R Jex b Swan .....	5
R KELLY r.o.....	24
C GREEN c D Morley b R Mooney .....	6
K DARIEY c Swan b P Mooney.....	8
B MORAN c B Ussher b Haslem.....	29
G SWILHES c C Mooney b Swan.....	94
S DAVIS st B Jex b H Ussher .....	2
N MILLER c ? b D Morley .....	10
M KELLY c C Mooney b P Mooney.....	40
V SIMPSON n.o.....	1
Total 227. Bowling (overs/maidens/runs/wkts)	
N Swan 4-3-0-6-36, P Mooney 5-1-3-14, C Mooney 6-0-0-39, M Tasik 5-0-0-34, S Haslem 5-0-1-23, H Ussher 5-1-1-18, B Ussher 3-0-0-19, D Morely 3-0-1-13, H William 2-0-0-38.	

<u>Walcha/Uralla</u>	
N SWAN c M Moran b B Moran .....	8
B JEX b Bishop.....	5
D MORELY c M Moran b V Simpson.....	0
P MOONEY c M Moran b K Davis .....	50
S HASLEM b K Davis .....	14
M TASIK st Swills b R Kelly.....	9
C MOONEY c B Moran b R Kelly.....	0
H USSHER n.o.....	9
H WILLIAMS b B Moran .....	4
B USSHER c M Kelly b V Simpson.....	1
H SWANN c G Swills b V Simpson.....	0
Total 123. Extras 13. Bowling (overs/maidens/runs/wkts)	
B Moran 6-1-2-29, V Simpson 6-4-1-3-14, N Miller 3-0-0-22, M Bishop 4-0-1-24, K Davies 3-0-2-14, R Kelly 3-0-1-13, M Moran 2-0-0-5.	

The Walcha/Uralla Cricket Club commenced their 2023/24 season with a win in 2nd Grade and a loss in 3rd Grade while playing the opening round of the Armidale and District competitions last Saturday.

In 2nd Grade here at Peter Fenwicke Oval the homeside defeated Ex Services by 13 runs after setting their opponents a total of 106 of which Daniel Boyd scored a game high 31.

The visitors were dismissed for 93 with Cooper Boyd capturing 3/17 off 8 overs, opener Phil Frewen took 3/19 also off 8 overs while Ed Blomfield sent down 7 overs 5 maidens to snare 2/5.

In Armidale Easts Green batted first in 3rd Grade amassing a total of 227 thanks mainly to Glen Wilks who scored 94 runs and was the last man out after he was dropped earlier when he was on about 20 runs.

Wicket takers for the visitors were Peter Mooney 3/14 and Nathan Swain 3/36 whereas Hugo Ussher, Stephen Haslem and Dave Morley all took a wicket each.

Walcha/Uralla were never really in the run chase hunt falling 104 runs short of their target.

Number four batsman Peter Mooney completed a good allround game scoring a neat half centry while veteran Bob Jex was the only other batsmen to reach double figures with 15.

This week 2nd Grade are up against Hillgrove and 3rd Grade take on Easts Gold with grounds to be announced.

# Farmers Markets this weekend

Now in its eleventh year, the Walcha Farmers' Market continues to go from strength to strength. With a wide variety of stalls, it is always a great destination. This month's Farmers' Market is on this coming Saturday, at McHattan Park, Walcha, from 8:30am to 12:30pm.

There will be baked goods, fresh produce, plants, meat, seafood, cheese, flowers, condiments, books, soap and skincare products, pet care products, barbecue breakfast/lunch and coffee. For the kids, there is the park's play equipment to play on. Howard and Barb will be there with their musical entertainment.

"We work really hard to provide a great community atmosphere with a wide range of stalls" said Denise Cox, president of the WFM committee. "It's a wonderful way to spend a Saturday morning, supporting local businesses and catching up with friends."

Organisers are always keen for any volunteers wanting to help out on the community stall or as committee members. You can visit them at the community stall on the day to register your interest. They also welcome contributions to the community stall such as local fresh produce, baked goods, and eggs. They can sell these for you, for a small commission. The Walcha Farmers' Market is always on the third Saturday of the month, except for during the winter months. Anyone wishing to have a stall can send in the application form on the market's website, and the application will be assessed by the committee. As a Farmers' Market, there is a focus on local goods and businesses, with a "Make it, Bake it,



Thom's Fruit and Veg

Grow it!" theme. The market also supports community groups who wish to have a stall, often providing space for these stalls free of charge. Applications are required for these stalls too. <https://walchafarmersmarket.org.au/> You can also find Walcha Farmers' Market on Facebook.

## advocateclassifieds



### Funeral Notice

**LONERAGAN: SUZANNE  
MARGARET**

Late of Warrawee  
Formerly of Mudgee and Walcha.

21.09.1933 - 11.10.2023

Loving wife of Richard. Much loved mother of Amanda, Julie, Guy, Emily, Eve and all their families.

Requiem Mass for the Repose of the Soul of Suzanne will be Celebrated in its entirety at St Agatha's Catholic Church, Boundary Rd, Pennant Hills (enter via Trebor Rd) on Friday 27th October at 11am.

ALBERT & MEYER  
AUSTRALIAN OWNED  
THORNLEIGH 94843992

### Position Vacant

#### Employment Opportunity

Richardsons Hardware and Agriculture Walcha is a retailer of hardware, building supplies and agricultural supplies based in Walcha.

We currently have a vacancy in our business for a suitable team member. The position will involve providing great customer service to our clients be they farmers, builders, DIY and the general public. The candidate should be capable of conducting activities of the running of a hardware and agricultural business such as merchandising, using point of sale software, stocktaking, customer service etc.

Previous experience in relation to this would be highly valued. The position could be full time or part time depending on the candidate and would have some good career opportunities.

Interested candidates should forward the cover letter and resume to:

The Manager,  
Richardsons Hardware and Agriculture  
16w Fitzroy Street, Walcha 2354.

### Public Notices *cont*

#### **Nominations for Council's Australia Day Advisory Committee**



Council is seeking nominations from community members to serve on the Walcha Council Australia Day Advisory Committee.

No particular qualifications are necessary though a commitment to the activities and a willingness to be actively involved in the event are essential.

Anyone interested in serving on this Committee should pick up a nomination form from the Council Office or download it from our website: <https://www.walcha.nsw.gov.au/news>. Current and past Committee Members are encouraged to apply. Nominations must be submitted to Council by 5:00pm Monday 23 October 2023. For further information please contact Council on 6774 2500.

Phillip Hood, General Manager  
Walcha Council, PO Box 2, Walcha NSW

### For Sale

**Shoreline Oysters** at Farmers Markets this Saturday 21 October. Ph 0447 520 604.

**Large round Bales** of clean Oaten & Rye Hay. \$200 plus GST. Phone George 0427 018 493.

### Public Notices

**DR GENEVIEVE FREER**  
Phone 6777 2068 0429 668 583

**The Barber Shop** will be closed this week. Reopening on the 25 of October. Sorry for any inconvenience.

### Meetings

**The Annual General Meeting** of the Walcha Senior & District Rugby League Club, will be held at the Walcha Bowling Club on Sunday 5th November 2023 at 3pm. All committee positions will be declared vacant. Any and all parties are welcome to attend.





## Nick Moore PLUMBING & EXCAVATION SERVICES

WALCHA & SURROUNDING AREAS



Highly qualified and experienced plumber  
All aspects of Plumbing and Gas Fitting  
Wood heater installation  
Roofing and Guttering  
Gold License No 59555C

**Nick 0418 691 306**

nickmoore203@yahoo.com.au

Katy 0422 034 660



## M L MASSAGE THERAPY

Remedial and Sport Massage

MADDIE LANCE

TUES TO FRI 9AM - 6:30PM

**0432 635 994**

MOBILE  
TREATMENTS  
AVAILABLE

## STACES FAST FREIGHT

Delivering  
Tamworth - Walcha  
**0429 608 409**



## ENGINEERING

**John Wall**

• Stock floats • Feeders • Sheep & cattle  
yards • Steel framed sheds & mobile welding

**6778 0588 • 0428 778 087**



## CURTIS

MOWERS & SMALL ENGINES

ALL  
TYPES

- Mowers • Ride-ons
- Pumps • Chainsaws
- Whipper snippers
- Chain sharpening
- Bar dressing

SELLING New 30 & 40 Tonne Petrol Hydraulic  
WOOD SPLITTERS

• Chainsaw chain • Pumps & Generators •

**JAMES - 0488 020 762 (7 Days)**

## STORAGE CENTRE WALCHA

20' Containers available for rent \$35 pw + GST  
Secure Undercover parking for cars,  
vans etc \$15 pw + GST

**ANGUS 0427 787 332**

**MOBILE-FIX  
AUTO+AIR**  
Mobile Repairer &  
Airconditioning Specialist  
Licensed Vehicle Repairer  
Lic.No.46696 RTA Lic No. AU22616  
**PATRICK STACE - WALCHA**  
Mob. 0428 780 077 Ph. 6778 0595

## TRU BLU RECYCLING

**CASH**  
FOR  
**CARS & TRUCKS**  
ANY CONDITION

TRUSTED LOCAL OPERATOR  
FOR OVER 15 YEARS

**Mark 0412 310 650**

## EXCEED PROPERTY MAINTENANCE



**PHONE GREG  
0401 344 537**

- Roof Repairs
- Residential Carpentry
- Gutter Cleaning
- Solar Panel Cleaning
- Chimney Cleaning
- Int/Ext Painting
- Hedge Cutting/ Tree Pruning
- And much more

**25 YRS EXPERIENCE, LICENSED & INSURED** lic no 356559c

## A G W RURAL CONTRACTING

GPS Equipped boom spraying  
**Andrew Wauch 0427 549 748**

Tree lopping  
Tree removal  
Truck & chipper  
Bobcat  
Post hole digger  
Trencher  
Woolshed cleaning  
Stockyard cleaning



Scott Kermode

**0427 100 889**

**TREETOP  
services**

treetopservices@bigpond.com

## CHIROPRACTOR

**K Samantha Goor**

B.Sc. Anatomy (NSW) M Chiroprac (Macq)

Tuesday & Friday from 9.00am

**6777 1340**

## church notices



### ANGLICAN

Holy Communion 7.30am

Family Service 10.00am

All welcome. Phone 6777 2543 or email:

walchaanglican@gmail.com

### PRESBYTERIAN

Walcha Sunday 9.30am

All welcome. Phone 6777 2539.

### CATHOLIC

Sunday 10:00am Mass.



**Andrew: 0427 549 748**

**Toni: 0421 972 354**



Remote Bookkeeping,  
Bas Agent & Business  
Consulting Services

Mel Byrnes

0435 473 767

BAS Agent - 26141064

www.everybusinesssolutions.com.au

**DISCLAIMER** LETTERS TO THE EDITOR are submitted on the condition that The Walcha Telecottage as the publisher of The Apsley Advocate may edit and has the right to, and license third parties to reproduce in electronic form and communicate these letters. They are published at the discretion of the Editor and Board. The Apsley Advocate is printed by The Walcha Telecottage, PO Box 116 Walcha NSW 2354. Phone 6777 1111 Fax 6777 1112. The Walcha Technology Co Operative Limited, the Editor and Staff of this Newspaper have published any article here-in in good faith and bear no responsibility in respect to the accuracy of the information contained in such article. Any person or persons publishing material in this Newspaper do so in the knowledge that they shall personally accept any responsibility for the accuracy and other correctness of such articles and also accept full responsibility for the legal consequences if it be found that the article contains any inaccuracies in the contents of any such articles. **DEADLINE MONDAY 4.30PM** Editor: Anthea Macpherson. Advertising and Sport: Rosalie Gibson, Megan Scrivener, Emily Scrivener and Joscisca Matapakia.

# Marchant

BROS. PTY. Est. 2000



A FULL RANGE OF AFFORDABLE TRANSPORT & EARTHMOVING  
**COMMERCIAL WATER CARTING**  
 Dam construction/maintenance, stick raking, road building,  
 site prep, pipe laying and all timber work.

Check out our website for the full range of machinery,  
 attachments and services available



**FIREWOOD ORDERS CURRENTLY  
 CLOSED UNTIL WE CATCH UP ON ORDERS**

ORGANIC, LOW SMOKE, HIGH HEAT.  
 Beat the climate change, order now

**Earthmoving and Heavy Haulage Transport**  
 Jason 0427 490 487

02 6777 2024 marchantbros@bigpond.com  
 www.marchantbros.com.au

**FOR ALL YOUR EARTHWORKS  
 TRANSPORT AND ELECTRICAL NEEDS**

**ALL ASPECTS OF RURAL, COMMERCIAL & CIVIL WORKS**



- Freight & Transport • Machinery Float • Stick Raking
- Road construction and maintenance • Trenching
- General Earthworks • Drilling • Mulching
- Dam maintenance and construction
- Erosion Control • Site Preparation • Electrical Works

Ian Notley 04188 29188 • Mark Notley 0422 637 686  
 www.eteservices.com.au



# BOWLING & RECREATION CLUB

**Mon – Wed** 4.00pm – Close

**Thursday 19** 12.00pm – Close

Ladies bowls 9.30am for 10.00am start  
 Social bowls 1.00pm

**Friday 20** 2.00pm – Close

**2.00pm** Bingo

**6.00pm** Bistro

- BBQ sticky pork ribs
- Fish and prawn summer salad
- Chicken meatball carbonara
- Normal menu available, takeaway and delicious desserts.

**6.00pm** Tickets available for raffles –  
 meat and veg trays

**6.00pm** Free Bingo

**7.00pm** Raffles drawn & Members Draw

**Saturday 21** 11.00am – Close

**6:00pm** Bistro

2 – 4pm **TOSS THE BOSS**

**Sunday 22** 11.00am – Close

**12.00pm** Bistro open. Children U/10

kids meal free with an adult order

**12.00pm** Meat, fruit and veg raffles

**1.00pm** Raffles drawn

**MEMBERS  
 DRAW  
 \$400**

YOU MUST BE A MEMBER FOR  
 2023/2024 TO BE ELIGIBLE TO WIN

**TOM'S COCKTAIL  
 GRASSHOPPER**

**Melbourne Cup Luncheon  
 and fashion parade**

7 November

**NPL POKER  
 Saturday 28th October  
 from 3pm**

**Christmas Functions**  
 Taking bookings  
 Big or small

Choose from finger food, sit  
 down meals, smorgasbord or  
 themed food.

Do you live in Walcha Shire? If so you **MUST** be a member to enter the Club  
 Social Membership ..... \$15 – Full Membership \$105. PHONE 6777 2077

# LINMAC ENGINEERING

**IF YOU NEED IT – We make it!**

**CUSTOM TRAYS AND TIPPERS**



- Customer consultations to make sure we build to YOUR individual specifications
- Sandblasted and powdercoated
- Toolboxes, timber floors, tipper trays, water tanks ... whatever you need!

**AUTHORISED HUSQVARNA DEALER**



Check out our new facebook page:  
**Linmac Engineering Walcha**

211N Pakington Street WALCHA  
 Phone 6777 2822 Email enquiries@linmacengineering.com.au