

THE APSLEY Advocate

CIRCULATION 1810 – P 02 6777 1111 F 02 6777 1112 wtc@walchatelecottage.com.au walchatelecottage.com.au

30 August 2023

Hamish is ready to 'Ride for the Chopper'



**THURSDAY
31 AUGUST, 1PM**

Ben Nevis Angus Bull Sale

On property sale in
conjunction with



Held at "Mingary Yards" 645
Brackendale Rd Walcha 2354"

Bulls will be available for inspection
on sale day from 10am

Please Contact

Miles Archdale: 0428 660 326

Mat Larkings: 0427 002 427

Simon Newton: 0467 660 320



Financial Services

- Rural and Commercial Finance
- Leasing
- Home Loans
- Insurance Premium Funding

Kel Penfold



6766 5309 :: 0427 667 118

With the Westpac Rescue Helicopter's 21st Anniversary 'Ride for the Chopper' coming up in September, Woolbrook local Hamish McLaren has jumped back on a pushbike for the first time in years.

Hamish is easing himself back into the saddle for when he takes on a massive 500km trek from Woolgoolga to Tamworth next month. The ride will follow the scenic east coast and then head inland to Dorrigo, Armidale and Walcha, all the while raising funds for the Westpac Rescue Helicopter Service.

While he has ditched the training wheels, Hamish's bike has been modified with a specially purpose built prosthesis to make this ride possible. His partner Sandy is also partaking in the journey, supporting him in training, which includes regular Sunday afternoon rides to Bendemeer and weeknight dashes to Congi Station and Woolbrook village.

The Westpac Rescue Helicopter Service is significant to Hamish. He sustained an injury many years ago and has first-hand knowledge of how detrimental urgent help can be for those living in rural communities. Following his accident Hamish assisted in getting the Westpac Chopper established in the area, knowing it was a service that could have a significant impact on someone else's life.

Hamish commented that, "We all know someone who may need, or has needed, this service at some point".

The 'Ride for the Chopper' will take place over eight days and will be accompanied by a full support crew comprising of safety vehicles, bike trailers, catering crew and some very experienced riders. The group will be visiting local schools along the way, completing activities and participating in themed ride days.

Hamish has already smashed his goal of \$5,000, raising \$12,843 to-date and is leading the ride's Individual Fundraiser leaderboard. To support his ride simply jump online and search for Hamish's profile at: www.events.rescuehelicopter.com.au/event/ride-chopper/donate-fundraisers



24
Ready to
respond **24/7**
365 days

4
Four AW139's
across three
bases

1.5
Servicing **1.5**
Million people in
Northern NSW

75
Saving lives
since 1975



\$2.00 OFF BARASTOC CHOOK FEED

WVS
WALCHA VETERINARY SUPPLIES

6 Aberbaldie Rd Walcha
www.wvs.com.au

6777 2588



OK EARTHMOVING

Specialising in road construction & maintenance

• Stickraking • Dam building • Erosion works



Bulldozers • Excavator • Tip-truck • Vibrating Roller

PH 6777 7430 FAX 6777 7448

PETER O'KEEFE: 0429 944 821



Our brand new CONE CRUSHER has arrived....which means that we now have 20mm roadbase ready to deliver!

20mm roadbase is perfect for your driveway, stock yards, airstrip...etc

NO JOB TOO BIG OR SMALL!

We have a variety of products that will suit your every need: big rocks, small rocks, rocks of any size!

✉ SCOTT@BROOKLYNQUARRY.COM.AU

☎ 0434 011 570

📍 1643 OXLEY HWY, WALCHA RD. NSW
(BY APPOINTMENT ONLY)

🌐 WWW.BROOKLYNQUARRY.COM.AU

around the traps



By SIMON NEWTON

How good has the weather been considering it's the last week of winter and it feels like late September. There looks to be plenty of moisture around with these heavy morning fogs and the mare's tails I have been seeing in the sky. The forecast looked promising with a high chance of 15 – 20mm, but that has once again changed and been downgraded – hopefully they are wrong.

Not sure if you all heard but the ACT Government are set to decriminalise the use of illicit drugs in small quantities. Laws were passed in the territory's parliament back in December after the new legislation was introduced by ACT Labour-Greens majority government. It's out right ludicrous that they would even pass this legislation, what kind of a message are they sending to the people of Australia or even to our kids. Apparently if people are caught with these drugs then they will be fined \$100, or if they attend a drug program the fine will be dropped. Seriously, where are we heading as a society. Too many people are not held accountable for their actions while under the influence of drugs.

There has been plenty of talk around the ratio of male to female calves that have been born this season. A well known producer has marked an incredible number of male calves compared to female calves which has been similar case for many producers. I wonder what this could mean and if you will experience the same ratios in both cattle and sheep? I have only heard about the cattle marking ratios thus far and it would be interesting to see if there are similar trends when you mark your lambs. Some people think it's a sign from mother nature showing us what the upcoming season is likely to do – the more males the drier it will be and the more females better the season shall be.

The sheep job continues to get worse after mutton values have again fallen further, the best of the hook rates now \$2.60/kg. The processors also continue to push around the producers with ideal dress weights for lambs now pushed even higher to a 24kg plus grid. If your lambs weigh less than 24kg then you better prepare yourself. The lamb job is always a moving target, there is never a season where the parameter doesn't change for producers year-on-year. One season they want a domestic lamb to dress 18 – 22kg, the next it's 20 – 24kg and now 24kg plus. It just seems difficult.

There's one local bull sale to go, with Ben Nevis lining up 80 yearling and 18 month old bulls this Thursday, on property at 1.00pm. Do yourself a favour, if your still in the market for a quality Angus bull, head on out to 'Mingary' to check out the impressive line up on offer.

It's sad to mention, but I am not holding my breath for the Wallabies in the World Cup after being beaten on the weekend by France in a friendly. I hope the money they are paying to get Eddie Jones to coach is worth it and he can turn things around for Australian rugby – well he did a great job with England. Looks like Rugby Australia need to sort a few things out in terms of Women's Rugby. Rugby Union seem to be behind the ball when compared to Women's Rugby league and AFL.

1,565 head of cattle were yarded on Monday in Tamworth with a market suppressing further to dry conditions. Weaner steers back to the paddock slipped a further 15 – 20c/kg, while feeder steers 400 – 500kg slipped by as much as 25 – 30c/kg and topped at 280c/kg. Light condition stock struggled to attract much competition, with light heifers back to the paddock under 300kg, topping at 228c/kg. The cow market was like the previous week with heavy cows topping at 225c/kg. 3,700 lambs and 1,200 sheep were yarded in Tamworth on Monday with the good quality, well finished lambs – both trade and export – selling to dearer trends. A draft of new season restocker lambs averaged \$80 straight of their mothers, while heavy kill lambs topped at \$165. Light weight mutton looked hard to sell making from \$20 – \$50, while heavy finished mutton made to a top of \$90 for a run of heavy merino wethers.

Walcha Little Athletics is going ahead!

With a meeting taking place on the 16 August, the Little A's committee was formed bringing Athletics back to Walcha. Congratulations to President Elyce Laurie, Vice President Jess Williams, Treasurer Kelly Makeham, Secretary Bec Whillock, and Registrar Bec Partridge.

To kick it off they are very excited to be offering a volunteer training session, along with two kids 'Come and Try' days. These are FREE, to register please go to www.trybooking.com/CLCRP or contact us at walchalittleathletics@gmail.com.

The volunteer training session will be conducted by Adam Jolliffe, a Development Officer from Little Athletics NSW, on Sunday 8 October 9.00 – 10.30am at Walcha Central School (WCS).

The first 'Come and Try' will be conducted by Adam on the 8 October, following the volunteer session, from 11am – 12 noon. The second session is on Wednesday 11 October 3.30 – 4.30pm at WCS.

To ensure the children have the best opportunity to participate in this amazing sport, the committee needs community members who are interested in helping mentor and train to get in contact with them. You don't have to be a parent, you just need a current working with children check. Please get in touch if you think this sounds like you!

Walcha Little A's hope to be fully up and running and providing the first training day on Wednesday 18 October from 3.30 – 4.30pm at WCS, then carrying on throughout Term 4. You can keep up-to-date by following them on Facebook 'Walcha Little Athletics.'

The new committee would like to say a big thank you to Walcha Central School for allowing them the use of their facilities.



Pictured: Walcha Little Athletics new committee, Treasurer Kelly Makeham, Secretary Bec Whillock and President Elyce Laurie with some keen little athletes.



Stock and Property Watch

www.nutrienharcourts.com.au

Investment Opportunity/ First Home



This three bedroom weatherboard and iron home is situated a short stroll to the local school

- Two bathrooms
- Main bedroom with a walk-in robe
- The home is kept comfortable in the cooler months with a wood heater and the warmer months with ceiling fans
- Two good sized living areas
- Modern kitchen consisting of large gas cooktop/stove, dishwasher and plenty of cupboard space
- The large yard is fully fenced with additional side access
- Single garage with extra storage sheds

\$480,000

Enquiries to Peta Carter: 0407 350 781

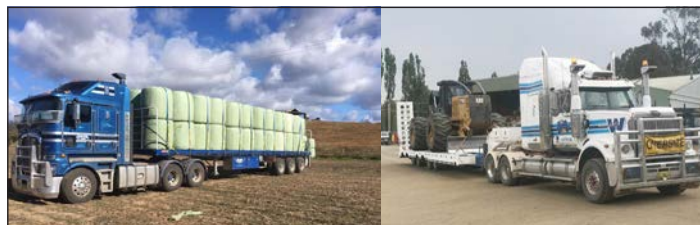
Family home with views over town



- This spacious home is situated a short stroll from town.
- The weatherboard and iron home consists of four bedrooms, three with built-ins. The fourth bedroom has a walk in robe and large ensuite with corner spa.
- Open plan lounge with wood heater and the most amazing views of town.
- Spacious dining flowing through to the sun drenched family room with gas heating for winter.
- Huge timber kitchen with cook top, under bench oven, dishwasher and an abundance of cupboards.
- Fully enclosed two tier yard with covered entertaining area, wood shed, garden shed and double garage with remote access.

Reduced to \$570,000

Nutrien Boulton's Walcha ■ 3n Derby Street Walcha ■ 6777 2044



45ft flat top • 45ft single deck cattle float • 26mtr B Double
19mtr mini B Double • Low Loader available for hire



BRIAN
Smith
TIMBER
TRANSPORT

Call us for
your large
Transport
needs

WALCHA
02 67772126

Bonnie Smith 0429 772 077

Brian Smith 0427 780 216

Walcha/Uralla Rugby League PRESENTATION NIGHT

Saturday 9 September
Walcha Bowling Club

Entertainment by
Jacko's Jukebox

6pm for a 6.30pm dinner
\$28 per head

Please RSVP by 4 September 2023
by depositing money into Walcha Rugby League:

BSB: 932 000

ACCOUNT: 1003 28444

REFERENCE: Your Name



All Welcome



letters to the editor



Time To Step Up

I haven't badgered you for weeks, folks, reckoning you needed a rest. But I'm back, and for a damn good reason: To urge you to voice your opposition to the horde of renewable energy monsters, power lines and transmission towers threatening to invade our region. Time to step up.

I say this for two reasons. (1) First, because "that threat" is growing ludicrously large, requiring us to urge those Decision Makers to end this madness. (2) And secondly, because those Decision Makers actually appear to be listening at last. Voice for Walcha has been informed that renewable projects without social licence or community support will not go ahead. Time to strike.

There are five decision makers you can email on this, listed below. The two main ones are: Penny Sharpe, NSW Minister for Energy and Climate Change; and Mike Young at EnergyCo. Of course you can copy them all into one letter if you wish. I've done my letters, and as a source of ideas you can view my epistle to Minister Sharpe on the VoiceforWalcha website. It's longish, but don't feel yours has to be. A couple of paragraph will be plenty.

Start with your objection(s) to the renewable monster. This could be anything, such as: the huge demand on water and gravel; the years of construction mayhem; the frightening landscape damage; the ecological and environmental destruction; the decimation of thriving local industries; the harm to community cohesion from an out-sourced work force; the agony of decommissioning; the looming possibility of litigation, and more. Then simply end your letter by stating that such a vastly irresponsible project totally lacks social licence and community support.

This is a real opportunity to be heard by the Decision Makers. Use it.

EMAIL ADDRESSES of DECISION MAKERS

Minister Penny Sharpe	office@sharpe.minister.nsw.gov.au
Mike Young	mike.young@dpie.nsw.gov.au
Adam Marshall	northerntablelands@parliament.nsw.gov.au
Barnaby Joyce	barnaby.joyce@mp.nationals.org.au
Tatsiana Bandaruk	tatsiana.bandaruk@planning.nsw.gov.au

John Heffernan and Voice for Walcha

CWA's Awareness Week

This year CWA will be holding their Awareness Week in early September with the focus on Neurodiversity. The following paragraph comes from our CWA August magazine and written by our CEO Danica Leys.

"Neurodiversity includes ADHD, Autism, Dyslexia and Tourette Syndrome, with a particular emphasis on adult women who are being diagnosed with ADHD and the challenges they face around diagnosis and accessing suitable and affordable treatment options, especially in Remote, Rural and Regional NSW".

Walcha CWA will be holding an evening at the Walcha Bowling Club on Wednesday 13 September, with Guest Speaker Mrs Anna Thew. Anna is a Clinical Psychologist with extensive experience in both public and private practice and will be able to expand our knowledge on these medical issues.

Details and cost for the evening will be advertised in the Apsley Advocate next week if you are interested in attending.

Vic McIvor, President

DISCLAIMER LETTERS TO THE EDITOR are submitted on the condition that The Walcha Telecottage as the publisher of The Apsley Advocate may edit and has the right to, and license third parties to reproduce in electronic form and communicate these letters. They are published at the discretion of the Editor and Board. The Apsley Advocate is printed by The Walcha Telecottage, PO Box 116 Walcha NSW 2354. Phone 6777 1111 Fax 6777 1112. The Walcha Technology Co Operative Limited, the Editor and Staff of this Newspaper have published any article here-in in good faith and bear no responsibility in respect to the accuracy of the information contained in such article. Any person or persons publishing material in this Newspaper do so in the knowledge that they shall personally accept any responsibility for the accuracy and other correctness of such articles and also accept full responsibility for the legal consequences if it be found that the article contains any inaccuracies in the contents of any such articles. **DEADLINE MONDAY 4.30PM** Editor: Anthea Macpherson. Advertising and Sport: Rosalie Gibson, Megan Scrivener, Emily Scrivener and Joscisca Matapakia.

Students big and small enjoy Book Week

Walcha Preschool was full of cute characters last week to celebrate Book Week. The children dressed up as their favourite book characters, which included Harry Potter, Where's Wally, Woody, lots of pretty princesses and super heroes, a unicorn and one very cute Shaun the Sheep.



Students at Walcha Central School enjoyed parading their costumes at their annual Book Week celebrations. Once again there were amazing costumes from books such as Disney's *Frozen*, The Brothers Grimm *Rapunzel* and Aaron Blabey's *Piranhas Don't Eat Bananas*, to Kate and Jol Temple's *Bin Chicken* and Simon Green's *Fabulous Frankie*. The teachers also joined in the fun!



thumbs



- 👍 To the wonderful ladies at the Telecottage for all the printing they have done for us. Such a pleasure dealing with such efficient, happy, helpful and organised ladies.
- 👍 To the two lovely ladies who came to my assistance after a medical episode last. Your assistance was very much appreciated. Thank you for being there.
- 👍 To Bernie Brady for taking the time and assisting a WCS student create an amazing saddle for her HSC Major Project. Thank you so much.
- 👍 To Arokiya McDonald for being a great Walcha citizen.
- 👍 To the customer service officers who wear their name tags. Really appreciated.

Contributions will be received in person, by phone or email and must be accompanied by your name and contact details. They will be printed at the discretion of the editor.

Walcha Resilience stories



Another story from Walcha Council's Disaster Risk Reduction Co-ordinator Kruthika Nagananda who is compiling stories from locals as to how they survived recent disasters to help people learn from each other, and for the community to realise they are not alone as everyone has different ways of coping.

Anne-Marie Pointing

By Kruthika Nagananda, Disaster Risk Reduction Coordinator

Similar to everyone in Walcha, Anne-Marie has many roles in the community. She believes that everyone has a purpose and hers is to 'give' - to her family, to her friends and her community. She is a wife, a mother, a grandmother, a Councillor, a land manager of crown land in Yarrowitch and a part of the Yarrowitch campdraft group. She moved with her family 20 years ago from Queensland. Being in cattle farming all her life, Anne-Marie and her family found Yarrowitch special due to the rains and loved the country. She describes Yarrowitch as a "safe country and kind to the livestock".

During droughts

"The seasons are so lovely here, I did not think, in my wildest dreams, Yarrowitch would look like it did. It was an eye opener to me. I have been in several droughts in Queensland, and to think it was as good as any drought as in Queensland is pretty scary", she said. Surrounding herself with family and her community helped her through the drought. Her upbringing, her friends and family helped her to achieve resilience every day. "Resilience is ability to withstand adversity and bounce back from the difficulty. What is your story going to be, if you are not able to withstand or bounce back? It is something we all need to think about", she said. She believes

that knowing that you have someone you can rely on (be it your family or a friend) helps navigate through the difficult situations - knowing the right connections and right people to get the feed supplies, transportation and having good communications with neighbours helps solve many problems. "And this community is amazing, they are there when we need help. Even in the tragedy, community pulled together", she said.

"During drought, dealing with the financial situation is difficult, especially when you do not know when it will end. That is the greatest fear", she said. In rural areas, preparation is only the key; having water security strategies in place, having a dam, thinking of alternative water sources, having plans for the alternative feed, strategies to keep your business running if things get worse. An important connection is a good working relationship with your bank manager and other financial service workers. "Thankfully it did not come to the point where we had to sell our breeders, the rain arrived just in time", she said.

"No two droughts are the same, however with experience we also prepare for the next drought. Never be complacent, the next dry time may be around the corner. Have thoughts about some exit plans for livestock as the season progresses and the feed diminishes. There is always help if you wish to seek it out", she said. Transport subsidy was available during the drought which helped a lot of farmers in the community to transport animals and import feed.

During bushfires

When there were fires, all she could do is stand back and watch it burn. "I remember we had gone to feed the cattle, some of it had burnt the day before, there was still a bit of smoke. When the wind came through, holy smokes! I don't think anyone who hasn't experienced it will be able to understand the depth of the impacts", she said. Bushfires often feature on the TV, however having experienced them is entirely different, "You see these flames in distance and think, should I get in the car now? Do I have time to get my bike in the trailer?", she said.

Bushfire experience taught Anne-Marie to know the impacts of the bushfires when not prepared. She now has strategies in place for bushfire preparedness around her house; knows the places of the hoses, has a checklist of things to do during bushfires, removing things that are volatile, keeping the green minimum adjacent to the house. Her husband has strategies in place such as having roads cleared, equipment working to fight fires and locating water resources. Remembering that others maybe busy fighting their own battle and you could be on your own for some time.

After bushfires

"We live in a generous country, not many realise it; but we received immense support and help right after the bushfires", she said. According to her, it was also hard to accept this help, since she believed there were a lot more people in need of help compared to her. "We also received services as donations from organisations such as Give It and Anglicare, where donations were given to the people in need; Local Land Services donated hay after the fires for the stressed farmers to collect from Walcha", she said. Blaze Aid helped the Yarrowitch community through the reconstruction post bushfires. "Some Blaze Aid volunteers were community members who already had their own drought and bushfire issues to deal with. They and others helped the community for a couple of months. It was a generous time, from our own people, wider Australia, let alone from government grants and support. Such is the country we live in", she said.

The importance of the Yarrowitch community hall was brought into light right after the 2019-20 fires. "The Yarrowitch community realised the importance of the Yarrowitch showgrounds and community hall as a gathering place. Rural Fire Services and Blaze aid camped in the area and donations of various sorts were dropped off over the time. Post the fires, initiatives through grants were undertaken to improve the hall", she said.



Achieve the best outcome for your investment and retirement goals. Contact our highly qualified and professional financial adviser today.

Greig Meyer is a Certified Financial Planner and principal of PKF Wealth based in Tamworth and Walcha. For more information or to make an appointment contact one of our friendly staff now.

Tamworth

22-24 Bourke Street

Tamworth NSW 2340

Walcha

12 Derby Street

Walcha NSW 2354

Greig Meyer is an Authorised Representative of PKF Wealth TMW Pty Ltd

ABN 21 154 894 130 AFSL No. 515733

what's the goss



with AJ Cross

Former Walcha resident Norma Ryan, dearly beloved wife of Bernie Ryan and Gordon Brooks (both deceased), left this world peacefully on the 19 August and was farewelled in Tamworth last Wednesday. May Norma Pearl Ryan Rest in Peace.

Walcha's only senior footy team to make their respective Semi Finals, the Walcha/Uralla Jillaroos went down to Guyra in the Group 19 Ladies League Tag Reserve Grade Grand Final, last Sunday at Bellevue Oval Armidale UNE. To their credit Guyra were the better team on the day with their tagging in defence paving the way to the SuperSpuds deserved victory. Former Niangala resident Macey Clarke was Co-Captain of the winning Guyra squad.

Weather conditions couldn't have been better at Bellevue last Sunday where quite a number of Jillaroos supporters were in attendance for the 'Big Dance'. Lets just say there were more Walcha than Uralla followers present, unless they were somewhere else on the ground, I didn't spot them.

Anyone that travelled to the Grand Final last Sunday and left Walcha from 7.00am probably spotted a scantily attired bloke on the side of the road with his wife waving placards cheering on the Jillaroos. Good on ya Speedy and Mel Ledingham.

Talented Walcha Central School sportsperson Blaine Cooney represented North West at the NSW PSSA Rugby Championships in Camden last week. North West played seven games over three days winning two and narrowly missing out in most of the others. Playing outside centr, Blaine enjoyed the experience making new friends and wants to play more Rugby now. If Blaine was outside centre I would have liked to see how big the North West forward pack was.

Pakington Street, co-owned mainly by Walcha greyhound enthusiasts, resumed from a spell last Saturday at Dubbo completing the 318 metre distance in 18.58 seconds to finish fourth after being boxed in at the start of the race. Pakington Street has now picked up over \$10,000 in prize money from his 14 starts, three wins, three seconds two thirds and four fourths (which also pays prizemoney).

With just one round remaining the leading footy tipsters in various competitions around town look like they are close to being home and hosed, except at Thunderbolts Way Cafe where only two points separate first and second. Naturally the leaders will select the favourites this week, forcing the tipsters behind them to go for upsets which could play havoc with the minor places.

Big wigs of the week: BC – Marley Haines, Newie – Peter Hayes, Apsley – Tim Rumbel all picked the Card. Thunderbolts – Emily Smolders, Kerri McKern and Bec Bullock, Vet Supplies – Raya Kirby, Jason Scott and Kyle Goodwin all 14 points.

Leaders: BC – Kyle Goodwin 290, David 'LJ' Hooker 282, Carly Goodwin 280 and Roder 'Jagger' Jamieson 278. Newie – Liam Brennan 284, Charlotte Lyon 276 and Lachlan 'Filbert' Green 274. Apsley – Stephen 'Normie' Goodwin 277, Scotty Swain 269, Mick O'Reilly, Ian Cameron and Beau Smith all 265. Vet Supplies – Kyle Goodwin 280, Daylight second, then Dion Bird, Peter King and Jason Scott 262. Thunderbolts – Paul Nash 265, Emily Smolders 263 and Shauna Hawkins 257. Good luck to all those punters still involved.

When your luck is in last Friday night at the weekly Oxley Riders chocolate wheel at the Newie, I was lucky enough to collect two meat trays and then at the Sunday BC raffles picked up another couple of trays, all supplied by Cross Bros Butchery. Shop boss Jonnie Cross suggested that it would have cost me a lot more over the counter after I told him how many tickets I purchased at both venues.

Pitt Son's REAL ESTATE & LIVESTOCK

SAM PAYNE 0428 667 404 | ANDREW BLOMFIELD 0428 667 402
RON VINCENT 0427 775 821 | TROY DAVEY 0427 157 557

FOR LATEST
UPDATES



6777 2000 | www.pittsons.com.au



Charming home

- Two bedrooms
- Built-in wardrobes
- Brand new kitchen with dishwasher
- Renovated bathroom with spacious step-free shower and under floor heating
- Very spacious living area
- Wood fire heating
- Flat yard

\$430,000



Food Service SHOP

A great opportunity awaits for the food enthusiast to open their very own fine dining, takeaway or restaurant in the main street of Walcha.

The building is fitted out with all the equipment required:

- Fridges
- Bain marie
- 2 x large cool rooms,
- Cooktops
- Ovens
- Range hoods
- Storage room
- Office
- Bathroom with a shower and toilet.

If you're looking to start your own business without a large setup cost, this might be just what you are looking for!

\$380,000

First day of 'Big School' for St Pat's Transition



Last Friday, St Patrick's Primary welcomed Alice, Alfie, Amelia, Anna, Eden, Emilia, Eve, Evelyn, Harrison, Harry K, Harry M, Heidi, Stirling and Wallace for their first day of Transition.

The students were very busy on their first day at 'Big School' and completed a wide range of fun, exciting activities.

From all accounts, the Transition students had a fantastic day and are very much looking forward to joining the school again this coming Friday.

Thank you to Mrs Hoy and Mrs Rizzi for leading day one of Transition and ensuring all of these young students had an enjoyable time.

advocate sport



Jillaroos

The Walcha/Uralla Jillaroos were defeated by Guyra 14 – 4 in the Group 19 Ladies League Tag Reserve Grade Final on Sunday at Bellvue Oval at Armidale UNE.

Guyra capitalised on an early Jillaroos mistake when they scored within the first two minutes, touching down next to the goal posts. The conversion attempt was missed, but Guyra led 4 – 0 until the 18th minute when Shae Partridge weaved her way over in the corner on the back of a good 15 metre evasive, diagonal run.

Goal kicker Maddie Lance struck her conversion attempt well from out wide but narrowly missed the goal to leave the scores at 4 all, which remained that way until oranges were taken at halftime.

Just three minutes had elapsed in the second session when Guyra scored an unconverted spectacular try in the entrance gate corner after the Jillaroos failed to clean up the ball in their own in goal.

Midway through the second half Jordy Hoy made a great attacking run deep into opposition territory only to be tagged by a desperate defence.

With ten minutes remaining Guyra scored the try of the match from 50 metres out with good team work, despite aggressive defensive attention from Jillaroos skipper Nicola Hoy and fullback Rachael Green.

A successful conversion attempt from close to the post finalised the scoring at 14 – 4.

It wasn't all doom and gloom for the Jillaroos, they did show glimpses of dangerous attack, especially by speedsters Jordy Hoy, Shae Partridge, Jojo Matapakia and Rachael Green. In defence Kirra-Lee Murphy and skipper Nic Hoy were tireless and received good support from Caitlin Harris, Jorjie Ledingham, Natasha Foster, Hannah Byrne, El Brazel, Finlai Bird, Maddie Lance and Bella Swift until she re-injured her knee late in the match.

The Jillaroos went into the Grand Final without Alisha Dillon due to suspension, along with Taneika Landsborough (pregnancy), as well as Chloe Cox and Marrisa Shielah who were both injured.

Captain Nicola Hoy thanked Jillaroos Coach Josh Lordanic for his efforts during the season when she graced the presentation microphone after the game, and was also full of praise for all her teammates. The Walcha/Uralla Rugby Club will wind up their season when they hold presentation night Saturday 9 September at the Bowling Club from 6pm.

At the Nineteenth

A field of 42 teed off in the annual Workplace Challenge sponsored by the New England Hotel last Sunday, where Col Berry, Bill Fletcher and Wayne Brennan ran out the winners of the Three Person Ambrose event with a 56 nett. Runners-up were Gavin White, Drew Bird and Harley Carlon 57. Sweepstakes went to Vic Coulter, Tim Stackman and his son Isaac 59^{1/2}, Michael Stackman, Darren Bird and Melinda Bird 60^{1/3}, David Sweeney, Ross King and D.A Locke 60^{2/3}, Will Brennan, Peter Norbury and Lachie Fletcher 62^{1/2}.

Sharpest shooters at the pins were Lee Fletcher (1), Harley Carlon (3), Byron Cross (9), Pauline Carter (16) and Michael Stackman (18). Most accurate second shots were played by Isaac Stackman (4) and Ross King (14).

Last Saturday Club Secretary Jenny Lisle accumulated an impressive 23 stableford points to win the weekly 9 Hole Competition comfortably from runner-up Col Higgins, who counted out John McCormack on 17 points. NTP on 3 went to John McLaren.

The opening round of the 4BBB Championships is scheduled for this Sunday, where Jimmy Nivison and Jack McLaren are the trophy donors. The second and closing round will be played the following Sunday with Peter Norbury and Tony Asmus in charge of supplying the prizes.

Wednesdays Golf

We played for Cark Street's Presidents Trophy on Wednesday which was stroke, putting, monthly mug, Golden Jubilee and the fifth medal round.

The winner with a 70 nett was Jenny Lisle. The front nine winner with 19 stableford points was Penny King and the back nine winner was Pauline Carter with 20 points.

Sweepstakes went to Simone Sweeney with a 70 nett, and Barb Mulligan with 71 nett. Simone also won the putting with a total of 24 putts.

Penny King was the sharpest shooter on Hole 3 and Sal McCormack claimed closest second shot on Hole 18.

The monthly mugs went to Jenny Lisle – Division 1, Penny King – Division 2, and Barb Mulligan – Division 3.

Today we are playing a Four Ball Multiplier, draw for partners, for Vicki Heffernan and Jill Burnell's trophy.

Bowls

Dads Army: Two games of triples were played last Thursday afternoon.

This week Barry Kliendienst played twice and with the help of Noel Goodwin had a 25 – 13 win against Barry Hoad, John Watts and Brian Goodwin. The second game saw John McCormack, Neil Dark and John McLean defeat Eric O'Keefe, Peter Hayes and Warwick Hogan 15 – 8. Noel and Barry won the chooks.

Pennants: Jamie Kerr has put a form on the board. All players interested in playing Pennants later on in the year please write your names down ASAP.

Results: G Bird and S Goodwin defeated G Clare and B Kliendienst 20 – 12.

Draw: Saturday 1:00 Start: A Grade Singles – F Cameron v B Kliendienst, marker N Goodwin. S Goodwin v E O'Keefe, marker G Clare.

Darts

17 August: Bowling Club – winners were Neil Dark and Glenn Olrich taking \$80.00, second Ben Robinson and Timinka Stackman taking \$30.00 and third place Dean Kelly and Kurt Brazel taking \$20.00. High scores for the night were Dean Kelly 116, 134 and lows of 2 and 2, Matt Settle low of 1, Tim Baumer 86 peg out, Ben Robinson 140 and 115, Karl Anderson with 121 and Kurt Brazel with a low of 5. Thank you to the Bowling Club for helping out with the prizes.

24 August: New England Hotel – winners were Vince Costigan and Glenn Olrich taking home \$70.00, second place Adam Dark and Kurt Brazel taking home \$30.00 and Karl Anderson and Robert Smith taking third place and \$20.00. High scorers for the night were Karl Anderson 100, Timinka Stackman 120, Glenn Olrich 133, Vince Costigan 117, Robert Smith 114 and Kurt Brazel with 112. A shout out to Perc at the New England for helping out with the prizes.

This week: We play at the Apsley Hotel, names in by 7.00pm, \$5.00 entry, everyone is welcome to play.



For Sale

DJ'S Firewood: Best wood in the district. Bulk only – minimum 6m³, maximum 10m³. Deliver Walcha Saturday OR pick-up from Niangala Saturday 1.00 – 4.00pm. Phone 0427 335 631 or 6769 2395.

Rowing Machine still in its box \$200. Jeep Cherokee, petrol, Flat 6 and Rego. Call 0447 014 903

Work Wanted

NDIS FEMALE CARE WORKER available in Walcha for Community Access to appointments, social activities and shopping in and around Walcha. Can also offer assistance with daily life requirements. Six years experience, all required certificates in place. Phone 0448 778 136 for further details. Please use my voice mail if I am unable to answer, I will get back to you.

Meetings

Walcha Support Group Inc. AGM tomorrow Thursday 31 August 1.00pm, Walcha Tennis Club Angle Street. All Welcome.

Raffle Results

Walcha Hospital Auxiliary stall 26.8.23, 1st Jenny Sweeney, 2nd Margaret Higgins, 3rd Mick Wall. Thank you all for your support.

Walcha Women's Bowling Club Raffle: First M Morris, second Prize J Hunt.

Public Notices

Quota Christmas Markets – Saturday 25 November. All enquiries to Pam Makeham 0429 772 419.

Pony Camp forms now available. Please email walchaponyclub@gmail.com for forms.

Public Notices cont.

DR GENEVIEVE FREER
Phone 6777 2068 0429 668 583

church notices



ANGLICAN

Holy Communion 7.30am
Family Service and Kids Club 10.00am
Niangala Service 2.00pm
All welcome. Phone 6777 2543 or email: walchaanglican@gmail.com

PRESBYTERIAN

Walcha Sunday 9.30am.
All welcome. Phone 6777 2539.

CATHOLIC Sunday 10:00am Mass.

trade and professions



WALCHA LAW
SOLICITORS

Sophie Thomson | James Levingston

Conveyancing | Power of Attorneys
Wills | Estates | Traffic Offences

Local Firm - over 70yrs in the Community

02 6777 2066 info@walchalaw.com.au
walchalav.com.au

INCORPORATING PATTERSON BYFIELD & BRYEN

Nick Moore

PLUMBING & EXCAVATION SERVICES

WALCHA & SURROUNDING AREAS



Highly qualified and experienced plumber
All aspects of Plumbing and Gas Fitting
Wood heater installation
Roofing and Guttering
Gold License No 59555C

Nick 0418 691 306

nickmoore203@yahoo.com.au

Katy 0422 034 660



Andrew: 0427 549 748

Toni: 0421 972 354

A G W RURAL CONTRACTING

GPS Equipped boom spraying
Andrew Wauch 0427 549 748

**TRU BLU
RECYCLING**

**CASH
FOR
CARS & TRUCKS**

ANY CONDITION

**TRUSTED LOCAL OPERATOR
FOR OVER 15 YEARS**

Mark 0412 310 650

CURTIS

MOWERS & SMALL ENGINES

- Mowers • Ride-ons
- Pumps • Chainsaws
- Whipper snippers
- Chain sharpening
- Bar dressing

ALL TYPES

SELLING New 30 & 40 Tonne Petrol Hydraulic
WOOD SPLITTERS from \$3,100 delivered
• Chainsaw chain •

JAMES – 0488 020 762 (7 Days)

New England IT

**ONSITE COMPUTER
SERVICE + SALES**

Tim Sutton 0414 874 523

**STORAGE CENTRE
WALCHA**

20' Containers available for rent \$35 pw + GST
Secure Undercover parking for cars,
vans etc \$15 pw +GST

ANGUS 0427 787 332

Tree lopping
Tree removal
Truck & chipper
Bobcat
Post hole digger
Trencher
Woolshed cleaning
Stockyard cleaning

SCOTT KERMODE
0427 100 889

**TREETOP
services**

treetopservices@bigpond.com

CHIROPRACTOR

K Samantha Goor

B.Sc. Anatomy (NSW) M Chiroprac (Macq)

Tuesday & Friday from 9.00am

6777 1340

**MOBILE-FIX
AUTO+AIR**

**Mobile Repairer &
Airconditioning Specialist**

Lic No 46696 RTA Lic No AU22616

PATRICK STAGE – WALCHA
Mob. 0428 780 077 Ph. 6778 0595

Marchant BROS. PTY. Est. 2000



A FULL RANGE OF AFFORDABLE TRANSPORT & EARTHMOVING
COMMERCIAL WATER CARTING
 Dam construction/maintenance, stick raking, road building,
 site prep, pipe laying and all timber work.

Check out our website for the full range of machinery,
 attachments and services available

**FIREWOOD ORDERS CURRENTLY
 CLOSED UNTIL WE CATCH UP ON ORDERS**

ORGANIC, LOW SMOKE, HIGH HEAT.
 Beat the climate change, order now

Earthmoving and Heavy Haulage Transport
Jason 0427 490 487
 02 6777 2024 marchantbros@bigpond.com
 www.marchantbros.com.au

**FOR ALL YOUR EARTHWORKS
 TRANSPORT AND ELECTRICAL NEEDS**

ALL ASPECTS OF RURAL, COMMERCIAL & CIVIL WORKS



- Freight & Transport • Machinery Float • Stick Raking
- Road construction and maintenance • Trenching
- General Earthworks • Drilling • Mulching
- Dam maintenance and construction
- Erosion Control • Site Preparation • Electrical Works

Ian Notley 04188 29188 • Mark Notley 0422 637 686
 www.eteservices.com.au



WALCHA BOWLING & RECREATION CLUB

Mon – Wed 4.00pm – Close

Thursday 31 12.00pm – Close

Ladies bowls 9.30am for 10.00am start
 Social bowls 1.00pm

Friday 1 2.00pm – Close

2.00pm Bingo

6.00pm Bistro

- Sausage with onion gravy.
- Fillets with avocado and feta salad.
- Chicken cutlets.
- Normal menu available, takeaway and delicious dessert.

6.00pm Tickets available for raffles –
 meat and veg trays

6.00pm Free Bingo

7.00pm Raffles drawn & Members Draw

Saturday 2 11.00am – Close

6:00pm Bistro

2-4pm TOSS THE BOSS

Sunday 3 11.00am – Close

12.00pm Bistro open

Children U/10 kids meal free with an
 adult order

12.00pm Meat, fruit and veg raffles

12-2pm HAPPY HOUR

**MEMBERS
 DRAW
 \$50**

YOU MUST BE A MEMBER FOR
 2023/2024 TO BE ELIGIBLE TO WIN

Fathers Day Roast
 Free drinks for all dads

**TOM'S COCKTAIL
 'TEQUILA SUNRISE'**

Social Bowls

Available during opening hours.

**See staff regarding bowls
 equipment.**

YEARLY SUBS - NOW DUE

Social club - Catering for wakes

Do you live in Walcha Shire? If so you **MUST** be a member to enter the Club
Social Membership \$15 – Full Membership \$105. PHONE 6777 2077



Wayne Hoy: 0427 281 060
 Matthew Hoy: 0427 322 640
 Aaron Bullen: 0409 776 340

**SPRAYING
 SOWING**

**EXCAVATING
 EARTHMOVING**

GPS & Auto Steer Equipped

- Komatsu PC300 Excavator
- Cat 324 Excavator
- Cat D6N Dozer
- 2000ltr Quikspray Trailers
- Casotti's
- 4 x4 Tip Truck
- 4x4 Trucks & Boomsprays
- Full auto Rate Control
- GPS & Autosteer
- 4x4 Tractors GPS Equipped
- 20 & 24 disc Williams Seeders
- Fencing & Rural Contracting