

THE APSLEY Advocate

CIRCULATION 1810 – P 02 6777 1111 F 02 6777 1112 wtc@walchatelecottage.com.au walchatelecottage.com.au

12 July 2023



Friday 14 July

AuctionsPlus™

Redhill

79 Angus Heifers
PTIC to High Indexing
Rocola Wagyu Bulls
Mat Larkings 0427 002 427

Ben Nevis Grazing Co

40 EU Angus Steers
40 EU Angus Heifers
10–18 months
Miles Archdale 0428 660 326

Sheep for Sale

WA & PP Monie
104 1st X Ewe Lambs
\$100 + gst
Miles Archdale 0428 660 326

Upcoming Bull Sales

Southcote Shorthorns

4 August

Hazeldean Angus

8 August

Highrent Angus

18 August

Ben Nevis Angus

31 August

Mark these dates
in your diary.
Catalogues
available soon.



Contact

Miles Archdale 0428 660 326
Simon Newton 0467 660 320
Mat Larkings 0427 002 427

NSW Country Champion

Gymnasts from all country clubs across NSW converged on Armidale last week for the Gymnastics NSW Country Championships.

Walcha gymnast, Iona Stanton scooped the pool winning four gold and one silver medal placing her first overall, being named NSW Masters Country Champion.

The 19 year old developed a love of the sport at a young age, starting at Kinder Gym when she was two years old. "Iona loved climbing, and tumbling into the foam pit," her father John Stanton commented.

Seeing the older girls doing complex routines spurred Iona on, and she has now been competing for around 16 years. During this time she has achieved Club, State, National and International recognition.

Since moving to Walcha in 2019, Iona joined the Armidale City Gymnastics Club. This Club hosted these Country Championships which saw more than 40 clubs and 1000 athletes showcasing their skills and hard work in six different gymnastics.

Iona competed in the Women's Artistic disciplines winning beam, vault and floor, and placing second on the uneven bars. She achieved the top score out of all the levels in her session.

Iona has also undertaken a new challenge in the past year, joining Walcha's Fire and Rescue squad.

Congratulations Iona on taking out the Country Championships in such a demanding sport.



NSW Country Gymnastics Masters Champion Iona Stanton

Reward yourself this Spring

Purchase 2 x 20L Extinosad Pour-On OR
4 x 20L Viper Pour-On and receive 100 points
to redeem through Elanco Rewards.

Terms and conditions apply. See in store for details.



6 Aberbaldie Rd Walcha
www.wvs.com.au
6777 2588

Receive
100 Elanco
Reward
Points





OK EARTHMOVING

Specialising in road construction & maintenance

• Stickraking • Dam building • Erosion works



Bulldozers • Excavator • Tip-truck • Vibrating Roller

PH 6777 7430 FAX 6777 7448

PETER O'KEEFE: 0429 944 821



Our brand new CONE CRUSHER has arrived....which means that we now have 20mm roadbase ready to deliver!

20mm roadbase is perfect for your driveway, stock yards, airstrip...etc

NO JOB TOO BIG OR SMALL!

We have a variety of products that will suit your every need: big rocks, small rocks, rocks of any size!

✉ SCOTT@BROOKLYNQUARRY.COM.AU

☎ 0434 011 570

📍 1643 OXLEY HWY, WALCHA RD. NSW
(BY APPOINTMENT ONLY)

🌐 WWW.BROOKLYNQUARRY.COM.AU

around the traps



By SIMON NEWTON

Not only was the rain good last week but the past week without frosts has been even better. The district recorded anywhere from 20 – 40mm of rain with the forecast looking dry for the next fortnight. Hard to believe we are nearly halfway through winter but we all know a Walcha winter lasts 5 months, not 3. I'm not sure if the black cockatoo tale is true but I'm guessing when 42 of them fly in to roost they are coming in for food, not a prediction of days of rain ahead.

There has been a lot of talk surrounding the price gap between what the producers are receiving at the farm gate in comparison to the price consumers are paying at the checkout. Beef and lamb have both significantly dropped in farm gate value with premium grass-fed beef now making 650c/kg carcass price while lamb is making 550c/kg. Large retail supermarkets are charging the consumer \$28-35/kg for prime steak cuts and even \$12-16/kg for mince. Lamb cuts like cutlets are still making \$35/kg and the simple Sunday leg of lamb roast \$20/kg. There is seriously some price gouging going on when the price gap between the farm gate and your fork is beyond 150% mark up. Clearly, we need more people to consume our beef and lamb produce but for some reason the large retail sector continues to excessively charge their consumers. We currently are producing plenty of product for consumers, but they are still turned away on value and choose to buy cheaper proteins like chicken. The consumers have remained as loyal as the price has dictated when the beef and lamb markets reached their extreme heights after the drought but as soon as we can supply cheaper beef and lamb, there seems to be someone in the middle who wants to continue their price gouging on consumers. We should be making the product more affordable, especially when supply is outweighing demand for those who would prefer to eat these proteins if they could afford them.

Bull sale season is quickly approaching as the team at Boulton's have just spent a couple of perfect winter days videoing some exceptional local bulls. I urge you all if you are in the market for a bull to inspect the great lineup of local bulls that will head under the hammer this year. Tummel Herefords will commence the local sales on 25th July followed by Southcote Shorthorns on 4th August, Yalgoo Poll Herefords on 14th August, Highrent Angus on 25th August and Ben Nevis Angus will conclude the local sales on 31st August.

Tamworth yarded 1095 head of cattle on Monday with majority of the categories quoted as being dearer. Yearling steers to restock and feed sold to dearer trends of up to 10-15c/kg better in places depending on breed and quality. Angus feeder steers made to 334c/kg while the best of the weaner steers topped at 382c/kg. Heifers to restock and feed remain firm on last week topping at 280c/kg for 345kg while the heavy export cattle except for cows sold to cheaper trends. The best of the heavy cows were up to 10c/kg better and sold to a top of 224c/kg for 744kg Angus cows. Tamworth yarded just 700 lambs and 170 sheep on Monday with lambs topping at \$157 for heavy export lambs while heavy trades made to \$120. The very few sheep sold to a top of \$150 for XB ewes.

Riverview ticks all the boxes



The thirty residents at Apsley Riverview Residential Aged Care receive the highest care possible with the team passing their recent Accreditation visit with flying colours.

Facility manager, Julie Blake said the visit was unannounced, with the Aged Care Quality and Safety Commission assessing 42 areas whilst at Riverview. "We have very dedicated local and international staff who provide exceptional care, and we met the standards in all 42 areas," Julie said.

Julie also thanked the great local doctors and physiotherapists. "They support us in helping meet these standards," she said.

Apsley Riverview are extremely grateful for the enormous amount of support they receive from

the Walcha community. "We have volunteers and Friends of Riverview who raise money to provide the little extras for the residents," Julie said.

Julie also thanked Graham Barnes for providing the Chaplaincy Services for the residents, as well as Linda Cross who visits as a Pastoral Care worker.

The kitchen staff also provide delicious meals to the residents, as well as for the Meals on Wheels which are delivered around the community.

The community is fortunate to have such a quality facility with dedicated staff who care for the elderly in Walcha.

Pictured: Staff members Brittany, Toni and Khan with residents Gwen Lisle and Doug White

Growing List of completed work on Waterfall Way

The list of completed improvements continues to grow to improve safety and driver experience on this popular mountain road.

The latest included the installation of slow vehicle turnout lanes, safety improvement work at Bakers Creek and safety repair work between Mahers and Boggy Creek Roads. Maintenance on Allans Water and Courtts Water bridges, reseals on various sections and repair work to asphalt in Dorrigo has also been completed. One item next on the list will be finalising installation of electronic advance warning message boards at six locations between Bellingen and Dorrigo.

Transport for NSW are also widening and making improvements to the road just west of Bellingen, carrying out slope repair work near the Ebor tip, improving the pavement quality 60 kilometres east of Armidale and upgrading guardrails at various locations. Following this culvert repairs between Newell and Sherrard Falls, culvert and guardrail repairs west of Dorrigo, permanent repair work to landslip sites at Myers Bluff and Thora, and safety improvement work east of Wills Creek.



Stock and Property Watch

www.nutrienharcourts.com.au

COUNTRY RETREAT



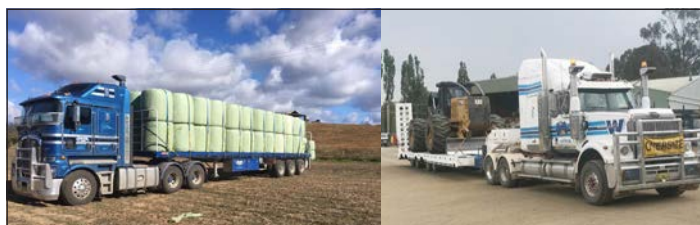
Beautifully presented amongst landscaped gardens

- 3 bedrooms with built in robes.
- Open plan lounge/ dining/ kitchen.
- Wood heating
- Kitchen with walk in pantry, wall oven and dishwasher.
- Newly renovated 3 way bathroom.
- New painting and carpet throughout the home.
- Family room leads to the outdoor entertaining area and very own vege garden.
- Office that can be accessed privately from the rest of the home.
- Double garage attached to the home.
- Large Colourbond double garage and workshop with power.

Enquiries to Peta Carter: 0407 350 781

All ready for the family with cubby house, chicken coops and even room for the pet cow

\$680,000



45ft flat top • 45ft single deck cattle float • 26mtr B Double
19mtr mini B Double • Low Loader available for hire



BRIAN
Smith
TIMBER
TRANSPORT

Call us for
your large
Transport
needs

WALCHA
02 67772126

Bonnie Smith 0429 772 077
Brian Smith 0427 780 216

Reboot your Grazing with Soil Land Food

Resilient, healthy and productive grazing landscapes will be the focus of a free workshop series for farmers in the Guyra and Walcha districts over the coming months.

The first Reboot Your Grazing workshops are designed to increase farmers understanding of soil types and soil health.

"The workshops are devised to give farmers a holistic overview to landscape management", said David Hardwick, Agroecologist from Soil Land Food.

He said, "We use a systems approach through managing farm ecology, regenerating landscapes and helping farmers with good decision making on a whole property scale".

"The first two workshops on soil extension are to help landholders build practical confidence by understanding soils and soil constraints", said David.

The first workshop will be held in July at Guyra on the 24th and Walcha on the 25th, with Kristy Youman, a Farming Systems Extension Specialist from Soil Land Food.

The initial workshop will cover all your essential knowledge on soils from understanding your topsoil, soil types, soil health and soil fertility and the four steps to soil success.

'If you would like to develop your practical knowledge and skills to make good management decisions and increase your drought resilience, I encourage you to take advantage of this opportunity', says Elizabeth Rosser, Project Officer – Sustainable Agriculture, with Southern New England Landcare.

"I am really excited facilitate this opportunity to learn from David and the team at Soil Land Food on how to build soil health and optimise a planned grazing approach", she said.

This project received funding from the Australian Government's Future Drought Fund and the Armidale Regional Council.

For bookings:

Guyra 24 July <https://www.stickytickets.com.au/AWSFN>

Walcha 25 July <https://www.stickytickets.com.au/NW60D>

For more information, visit Southern New England Landcare <https://snelandcare.org.au/event> or contact Elizabeth Rosser on 02 6772 9123 or email elizabeth.rosser@snelandcare.org.au



a journey of learning from K-12

WALCHA CENTRAL
School NEWS

PHONE 6777 2777

154E NORTH STREET WALCHA NSW 2354

WWW.WALCHA-C.SCHOOLS.NSW.GOV.AU

In week 9, K-6 went on a bee hunt to find Bony, Buzzy, Busy, Bonnie, Bennie and Barry. When each bee was found, students had to make a specific word as a group. We had lots of smiles and some great teamwork from everyone. After all the bees had been found, we went to the MPC to have Walcha's official spelling competition. We had 22 students from years 1-6 take the stage to spell words from The Arts Units word lists. All students are commended for giving each word their best effort. The competition continued during week 10 resulting in stage 2 champion speller Arizona and stage 3 champion speller Laurel.



*Premier's
Spelling
Bee*

Stage 6 Biology

For the second HSC assessment in Biology students were required to build a model explaining either the process of meiosis or DNA replication. When they presented their model students had to orally explain the process their model represented. The models were built to be as interactive as possible to help explain the microscopic processes occurring.



Happy Holidays

**K-12 students return
Tuesday 18 July 2023**

*Kindergarten Orientation
Thank you*

To all the families who attended our Kindergarten Orientation June 16. Further Transition information will be posted soon. If you missed out, please call the school for an information pack.



Riverview Ravings

The Friends of Riverview held its AGM recently and Olive Chandler was returned as President, Lyn Laurie Vice President, Don Murchie, Treasurer and Jan Cross Secretary along with Pam and Graeme Fairweather as gift organisers. We lost our wonderful Patron and supporter Claire Brazel during the year. Hazel Cameron has agreed to be our new Patron.

Street Stall – please put Friday 6 October in your diary to perhaps bake a cake or man the stall or offer a raffle prize.

Julie, Carol/Tonia endeavour to attend our meetings which is very productive and cohesive. This allows Riverview and the Friends to have a collegial working relationship, heading towards one common goal, the Residents and their welfare. We all love being a part of the Friends of Riverview where we are made feel very welcome during every visit to the facility.

You do not need to have a family member as a resident in Riverview to become part of the Friends. We meet on the first Wednesday of every month in Willow Wing so please consider becoming a Friend.

Jan Cross, Secretary

Friends of Riverview President's Report for 2022/23

By Olive Chandler, President

To be involved with the Residents is so rewarding and to be able to sit and listen to the varied stories of their lives is a gift in this busy world we live in and the constant threat of COVID.

Being a member of the Friends gives us a chance to support the Residents and appreciate the staff for what they do.

Money raised by the members is used to add little extras to the activities taken on by the staff allowing prizes for Bingo, outings, special lunches, crafts, birthdays, Christmas fillers for the stockings, small white boards for each Resident to have in their rooms for messages etc and any other article that the staff may request.

Bingo is still very popular every Tuesday with one of our members helping out. Thank you Jan for keeping an eye on the need to fill in or organise a helper.

Birthdays are special no matter what your age. Tracey Hoy monograms a handkerchief for each Resident and this she does free of charge. Thank you Tracey. Thank you also to Pam and Graeme who make sure the handkerchief is there on time and Graeme delivers to the men, which I'm sure they appreciate.

A big thank you to Janine Wright and family for buying fillers for the Christmas Stockings, filling the Stockings and being at Riverview on

Christmas morning to give to the Residents.

I'm sure anyone visiting Riverview in December would marvel at how festive everything looked. Thank you Carol and Tim.

Two Street Stalls were held one in October and the other in March with a total of \$2,195.24 being raised. This is amazing and shows what a wonderful community we live in. Thank you to the community for supporting the Street Stalls, Rhonda and Gary Olrich for generously donating wood for our raffles and to our members for their contributions to the stalls.

Presbyterian Women's Association donated \$200 and the Photography Group donated \$500 from the sale of the wonderful calendars. Regional Australia Bank from their Community Partnership Program donated \$1,627.82. Thank you to the Members of RAB who nominated Friends. Many kind donations were made by the family of a Resident, thank you.

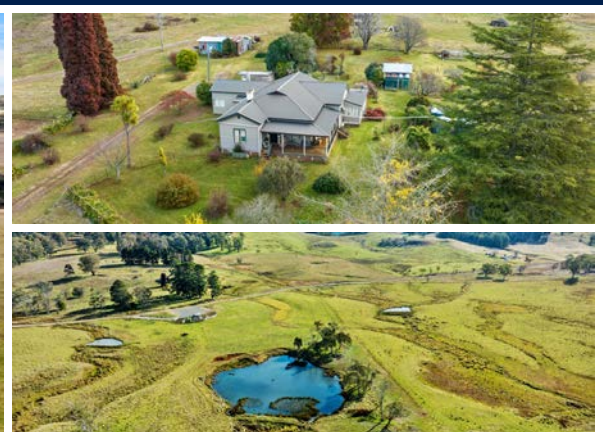
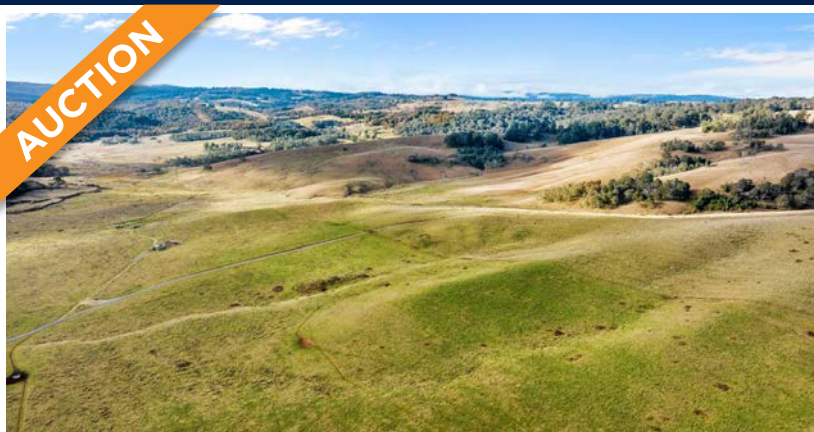
Congratulations to Toni Brazel for her wonderful 30 years working at Riverview. I'm sure the Residents look forward to Toni's presence and warm happy smile.

Julie and the staff have had a very mixed sometimes stressful year, but have come through as a team working together with the welfare of the Residents their highest priority.

Thank you to all of our members and especially Jan and Don who keep the wheels turning, Jan as Secretary and Don as Treasurer.

NOWENDOC | NSW

Davidson Cameron & Co.
A NUTRIEN AG SOLUTIONS PARTNER



Land Size – 1,030 ha | 2,546 ac

2 x

Tightly Held High Rainfall Country – Historic “Riamukka” held in the same family since 1852

“Riamukka” is steeped in history but the standout feature; *It's on the way to become a powerhouse in ability to carry and finish cattle with the improvements of pastures and unlimited access to water.*

Gently undulating grazing land regarded as some of the finest basalt country in the New England. Approx. 708Ha of established permanent pastures with approx. 88Ha ready to be sown down to new pastures.

Water frontage to Nowendoc River, 3 creeks, 18 dams + 45 inch rainfall average. The property is well suited to a breeding block or fattening block. As a cow & calf property the vendor estimates running 700 cows and calves comfortably.

A great deal of further information is available by the way of an Information Memorandum which can be emailed by request by contacting the selling agent.

AUCTION – 11am, 27th July 2023

Auction held at the Darling Street Community Centre, Tamworth

Address: “Riamukka” 5304 Brackendale Road,

NOWENDOC NSW

Video: <https://youtu.be/JbBYxvH3BHs>

Contact: Simon Burke 0427 634 341

Davidson Cameron & Co.
A NUTRIEN AG SOLUTIONS PARTNER

SCAN ME



Livestock & Rural Property Agents

www.dcco.com.au

Walcha/Uralla Rugby League Sponsors Day

LADIES CHARITY AUCTION

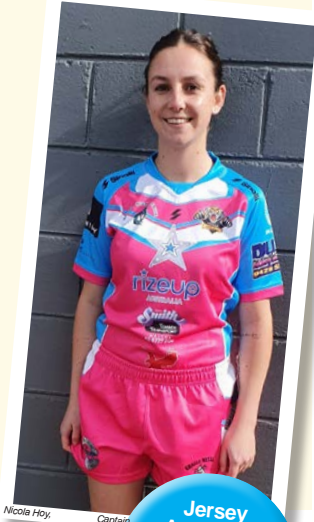
Saturday 22 July
Walcha-Uralla v Bingara

Sponsors invited to a BBQ Lunch
12 noon at Peter Fenwicke Oval
prior to the games

Ladies League Tag 1.00pm
Mens 2.00pm
CHARITY AUCTION - Held at Walcha
Bowling Club 5.30pm

Entertainment after the Auction
'Charlie Fittler'

Charities this year are **Rize Up Australia** (An organisation supporting families impacted by Domestic Violence) and also a local charity the Walcha Hospital Auxiliary. All proceeds (after jersey costs) will be donated.



Nicola Hoy, Captain

Jersey Auction to commence at approx. **5.30pm**

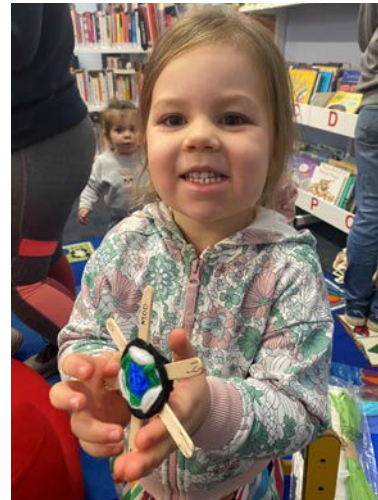
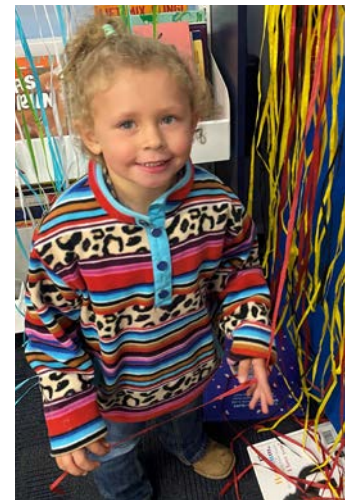
For our Elders

NAIDOC Storytime was held at the Walcha Council Library early in July to celebrate the theme "For our Elders". An impressive group of over thirty children gathered to celebrate Aboriginal and Torres Strait Islander Australian cultures. The children enjoyed reading some favourite First Nations picture books, including 'Silly Birds' by Greg Dreise and 'Thank you Rain' by Sally Morgan and Johnny Warrkatja Malibirr.

Everyone also had the opportunity to learn about traditional languages and join in song and dance from librarian Cassie's Torres Strait Island Culture.

We learnt about who our 'Elders' are and why they are so important to us. There were some great collaborative arts and crafts with sand art native animals, weaving and painting.

Thank you to our volunteers and community helpers, and all the families and daycare groups who attended the day.





50 BULLS

Fertility. Figures. Phenotype.

GATES ANGUS ANNUAL BULL SALE

1PM TUES 25TH JULY 2023

ARMIDALE EXHIBITION CENTRE

BULLS PENNED BY 10AM



SAM SEWELL 0447 255 100
BLAKE O'REILLY 0448 213 668



AuctionsPlus

CATALOGUES OUT NOW

AWI Graduate Training Program for 2024

Applications for the 2024 Australian Wool Innovation (AWI) Graduate Training Program open on 1 August.

The AWI Graduate Training Program provides successful applicants with a thorough and unique understanding of the wool supply chain from fibre to fashion.

The 18-month program starts each year in March and is based primarily at the AWI office in Sydney, where the graduates gain exposure to many areas of the AWI business including On-Farm Research, Processing Innovation and Education Extension, Consultation and Engagement, Global Marketing, Digital, Measurement and Evaluation, and Business Services. Graduates are also given the opportunity to gain global exposure to the wool supply chain through two international rotations. The program also provides the graduates with ongoing professional training and development opportunities, to further enhance their career within the industry.

The program is aimed at graduates from a broad cross section of disciplines who have a background in or connection with the Australian Wool Industry.

AWI Chief Executive John Roberts says the program has unearthed some fantastic young people who are now planning long careers in the wool industry.

"Having worked with the past and current graduates, I've seen firsthand the value of having such an all-encompassing program within the industry, covering the full supply chain, and the benefits it provides the successful graduates in enhancing their career within wool.

We continue to focus on attracting and retaining the top talent and the program is just one of the mechanisms we have in creating a talent pipeline and future proofing human resources in the industry".

In 2023 AWI selected two graduates were selected, they are Kate Rice and Harrison Dunning.

Kate who is originally from Parkes in central NSW says, "the grad program has given me a unique opportunity to combine my passion for agriculture and the wool industry with my love for textiles and design. Coming from a wool growing family, it has been an amazing experience to witness the supply chain in action from the farm gate to end garment. The program so far has presented me with various hands-on learning experiences to see what we as a company can do support Australian growers and their wool."

Harrison Dunning who hails from Sydney found his way to the graduate program through a keen interest in sustainable food and fibre production.

"The experience gained through the AWI graduate program has been invaluable in developing a comprehensive understanding of the wool supply chain and expanding my networks throughout the industry.

Four of the graduates who have already completed the program are still employed by AWI, in the following roles:

- Miles Barritt – Project Manager, Wool Q & Traceability
- Emma Murphy – Trade Marketing Officer
- George Lehmann – Project Coordinator, Training & Education
- Tom Hersee – Project Coordinator, Industry Development

On 1 August, you can apply at <https://careers.wool.com/apply-now/>.

Applications close 31 August 2023.



Pitt Son's REAL ESTATE & LIVESTOCK

SAM PAYNE 0428 667 404 | ANDREW BLOMFIELD 0428 667 402

RON VINCENT 0427 775 821 | TROY DAVEY 0427 157 557

FOR LATEST
UPDATES



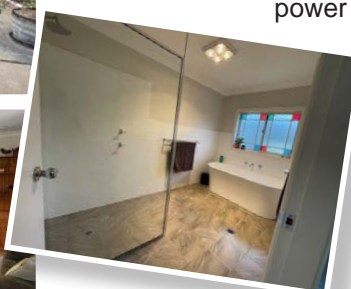
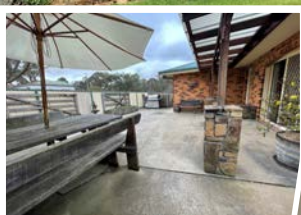
6777 2000 | www.pittsons.com.au

Stunning Brick Home on 2 acres



Exquisite 3 bedroom brick home located on the edge of town. Situated on 2 acres. You'll be captivated by the fresh paint and carpet.

- Kitchen is complete with a walk-in pantry and an abundance of cupboard space.
- The new three-way bathroom adds a touch of luxury to the home
- Outdoor entertaining area, perfect for hosting gatherings and enjoying the barbeque.
- In addition to the bedrooms, this house also features an office, ideal for those who work from home.
- Double garage attached to the main house.
- The property also boasts a large Colorbond double garage and workshop complete with power supply.



Don't miss out on the opportunity to own this beautiful brick house with ample space and modern renovations.

\$680,000

RubyHills Renewable Energy Project

Community Engagement

We continued our engagement for the Ruby Hills Wind project by holding two additional community information sessions in May. These sessions allowed community members to learn more about the project and offer feedback on our early plans.

This feedback will assist us in finalising the Ruby Hills Wind Scoping Report, which we plan to submit to the NSW Government by mid to late 2023. The report is the first formal step in the NSW environmental planning process. Comprehensive social and environmental studies and further community engagement will follow this project's preliminary phase as we move through the approval process.

What we heard

During engagement, we heard that community, the quiet and peaceful surroundings, and the natural landscapes are all important values to the people living in Walcha and its surrounds.

Some of the concerns we heard include:

- The impacts of the project, including the noise and visual impacts, impact on the road network and the process for decommissioning the infrastructure.
 - The general inequity of effects, with rural areas bearing the impacts of energy production when they are not the main users demanding the energy.
 - The cumulative impacts associated with the broader Renewable Energy Zone, as well as the effect of the workforce and flow on effects to community services, such as access to health services and affordable housing.
- The nature of positive impacts related to:
- The local economic benefits include opportunities for local procurement and increased patronage for existing businesses.
 - Opportunities for income diversification and employment opportunities, and training in the energy sector
 - Opportunities for the diversification of the local economy.
 - Transitioning to cleaner energy sources and enhancement of the overall environmental sustainability of the region.

ISSUE 5, JULY 2023

► At a glance

UP TO 158
WIND TURBINES,
GENERATING
870 MEGAWATTS



POWERING THE
EQUIVALENT OF
344,000 AVERAGE
NSW HOMES

DISPLACING
APPROX. 1.72M
TONNES OF
CO2 ANNUALLY



CREATING A
COMMUNITY
ENHANCEMENT
FUND

RubyHillsWind 

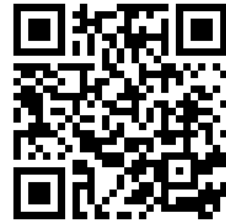
We want to hear from you –
so please contact us via email
enquiry@walchaenergy.com.au
or call us on 1800 841 840
or drop into the office at
13W Fitzroy Street, Walcha.

Your feedback is important

Our independent consultant, AAP Consulting, is conducting an online survey that will remain open to the public until **14 August 2023**. Your input will help us gain valuable insights into what you value about the area and your response to the proposed Project. Your responses will remain anonymous

and will help inform the Social Impact Assessment.

The online survey is one of several data collection methods that will be used to inform the Social Impact Assessment. There will be more opportunities to provide input and learn more about the proposed project in the coming months.



Project status

Work is progressing for the planning of the Ruby Hills Wind project. We have completed preliminary biodiversity, noise and visual assessments for the project, which have helped us draft the preliminary project layout. The assessments have resulted in the removal and relocation of some turbines in an effort to avoid impacts to biodiversity and waterways, as well as sensitive receivers in proximity.

These assessments will accompany the Scoping Report, which is planned to be submitted to the Department of Planning and Environment in Q3 2023. The Scoping Report is the first formal phase of the planning approval process. Once this is submitted, the Department of Planning and Environment will issue the Secretary's Environmental Assessment Requirements, detailing what Walcha Energy will need to assess as part of the Environmental Impact Statement.

Walcha Energy will have two years to complete the Environmental Impact Statement.



Stay in touch

For more information, please contact our community engagement team on enquiry@walchaenergy.com.au or 1800 841 840.



Walcha Resilience stories

Walcha Council's Disaster Risk Reduction Co-ordinator Kruthika Nagananda over the coming months is compiling stories from locals as to how they survived recent disasters to help people learn from each other, and for the community to realise they are not alone as everyone has different ways of coping.

"Losers live in the past. Winners learn from the past and enjoy working in the present, towards the future" – Denis Waitley

Rob Blomfield has been kind enough to be interviewed for the first article.



Introduction

Dear oh dear, when does it all end? From going through the storm, to drought, to bushfires, to COVID, and unbelievable rain for the last three years; I realised that it all ends! It made me realise that I can survive and be resilient. To keep surviving the bad times, my only mantra is "Keep moving forward, don't look back, be ready to adapt to all the changes". The world keeps moving and we have to keep moving with it. We are in the business of supplying food, with this increasing world population hence I know it is an efficient business- this keeps me going.

Rob's background

I was born and bred in Walcha and I am 74 years old. I was educated in Armidale, and made the choice to go on the land when I was 18. I have been married for 46 years with two boys. Growing up, I was involved in many community activities including tennis and cricket, representing the Northern Tablelands, Northern NSW, and NSW country teams for Cricket. Now I am involved in Rotary, Rural Fire Service, NSW Farmers Association, my business, various community clubs and different committees. This helps pushing through the hard times.

The last few years have been testing. There was a storm, I remember, the entire house was shaking. It was like a jumbo jet taking off, trees were all over the garden, fences were destroyed. We still haven't been able to clear all the trees from the storm of 2018. Luckily the storm missed Walcha township.

Then drought – which was a result of nine years of below average rainfall in Walcha. One year of the drought means nothing, but when it starts to compound in the following years, it impacts the soil moisture, feed supply and the livestock which lose condition. It killed 40% trees on our property. The repercussions of it are still evident. Getting fodder during the drought was difficult. Not knowing when it was going to end is the worst part. We were running out of water, we were running out of money, we borrowed money, trying to keep the livestock alive. It was so dry during the drought, bushfires had to come! In a silly way, the fires were a distraction from all the stress that was created by drought, but it wasn't. It added to our problems. The amount of money flowing out of the business when none was flowing in was dreadful.

My typical day during the bushfires (from beginning of the October to Christmas) started from 5am in the morning. I would ring Greg (our local captain) and make a plan for later in the day, preparing back burning and firefighting. We had the entire neighbourhood involved through preparation of vehicles, and equipment etc. It was a challenge to get sourced water since everything had dried out, we used our private property water for most of it. Post preparation, I had breakfast and headed off feeding the livestock and doing farm work. I would come back at 4.00pm, have dinner and head off to fight the fire. It was a relentless

three months, exhausting! I remember in the beginning people from the South Coast, Canberra and South Australia brigades had come to help, however at the end when the south of NSW and Victoria were burning, we couldn't go to help them, we were totally exhausted fighting our fires!

In the middle of the bushfire, my mother-in-law died, with everything happening we had to push her celebration of her life back for three months. A week after the celebration, there came COVID; everything shut down. Walcha was a good place to live during COVID, it was nice a family time. However, the economy dropped and prices increased. I sold my wool I had in stock as I thought the world market would collapse. But that was a mistake. For the next four months, it rained and rained. It was a great Christmas present. The country has never flourished like the last three years. With the rains, and restocking, there was a boom in the market. My decision to sell off the stock meant 50 years of genetics were gone! These things are beyond our control, especially farming through different variables. It requires decisions to be made quickly on the go. Sometimes there are bad decisions made, but it is important to forgive yourself, you can't let it get to you.

When we think of climate change, no one knows what is the right thing. We have to believe what looks best for us and for the community. We all believe we are doing our best.

Learnings/Reflections

I define myself as a farmer, but more than that being part of everything on this land becomes crucial in order to protect this land. If we don't do it, no one else does it. There is a saying, "look after your land, and the land will look after you". Doing so has improved my assets which has in turn improved my financial capacity.

In the early days, that is what our family did. My brother and I developed this land, eventually we bought more land. When we had children, we wanted to give them the opportunity, in order to achieve it, we needed to be financially independent. Hence we took steps, setting up a super fund and investing in share markets. This allowed us to have a stable income. The Farm Management Deposit Scheme is the most beneficial tool for farmers. When there were good times, I could deposit money into the scheme; and when there were bad times, I could utilise it. It helped me manage the business for years and plan for the future.

This allowed our boys to take over our business, and establish it into their own business. All our businesses are different, but we work together. Having a good partner, family, and friends makes it easier, for which I am grateful. Fortunately, my boys came back into the business which was a huge relief. I have been farming for 56 years, having the boys as a support has eased a lot of my burden. My father died when I was young, and I lost my support. I had to make a lot of my decisions along with my brother, but having my kids by my side has been a big support. The younger generation's support is crucial, they know what to do and they are able to keep up with everything! My resilience has helped me nurture them, and now they are good at doing it themselves.

During these difficult times, cutting down the business was the last option. It always comes down to cutting down our lifestyle. I remember Rotary had distributed coupons in the community, that helped! More than helping business, it helped our well-being.

The important thing I learnt in life was, things end! Everyone in the farming community knows that everything in price that goes up, comes down; and vice versa. All bad times end and all good times end, it is just a question of surviving. In those times, there are always people to help. One of my wife's friends from Sydney helped us through drought. It showed there are people to support me and my family, and we are not all alone!

Walcha is a community that has always been supportive. We look after each other. The little things we do for each other help a lot. Farmers usually feel isolated, and in the midst of feeding, no water, fires, and smoke, there is nothing good about the place, but there were always people to get me through it. There were ways to get together and share our stories through a meal, or a drink. I remember ringing up my neighbours in Walcha one Saturday in the middle of drought, and fifty people turned up for the Sunday lunch! It was a special time.

what's the goss

with AJ Cross

Congratulations to local gymnast Emily Zorgdrager on being awarded a National Level Bronze at the NSW Country Championships held at Armidale last week. Competing in four disciplines Vault, Floor, Beam and Bars. Emily scored over 8 points out of 10 in all four sections to finish with 33.856 out of 40 points, the highest Armidale scorer in her group.

...

Competing at the same Championship was Iona Stanton who won the masters division (17 years and over) after winning the Vault, Beam and Floor sections while finishing second on the Bars. Iona competed last Thursday and finished the top scorer in all age divisions on the day. Iona also contributes to our community through her work at Walcha Fire and Rescue which she has been doing for just under 12 months.

...

Oxley Darts Club organiser Neil Dark reports the last two competitions held at the Apsley Arms Hotel and Bowling Club received disappointing attendances the last two Thursdays. Interested players are reminded prize money is up for grabs with the winning amounts depending on how many turn up on the night, but if attendances don't improve this Thursday at the New England Hotel there is a fair chance the pin could be pulled on any further darts competitions. Intending players should register by 7.00pm where the cost is \$5 each.

...

He is back on track – 'Pakington Street' the locally part greyhound owned resumed from a spell last Saturday after he was re-homed at Dubbo recently with trainer Paul Wasson who is a co-owner with his wife Leanne, sister to the late Cathie Brennan. 'Pakington Street' who spent the early part of his career at Ipswich won at Dubbo after he ran the 400 metre journey in 23.06 seconds and now has collected over \$7,500 in prize money from his 10 starts including two wins, a couple of seconds and a third. Not bad, a 50% place success rate. Good boy.

...

Have greyhound will travel. Last weekend co-owners Peter and Cameron Norbury along with fellow owner Wayne Brennan and his partner Cec Casey made the trip to watch 'Pakington Street' run at Dubbo and liked what they saw during the 23 odd seconds of action. Peter did mention it may not have been so thrilling had the hound not won after they had made the lengthy trip out West.

...

State of Origin Rugby League kicked off in 1980 with a one-off game, which was repeated the following year before a three match series was introduced in 1982. Since then there's only been seven 3-0 whitewashes four by Queensland 1988, '89, '95 and 2010 while NSW have achieved the feat on three occasions 1986, 96 and 2000. Queensland will be going for their fifth tonight and without wishing the Maroons any bad luck. I hope the Blues win the match. Go the NSW Blues.

...

Veteran Walcha athlete

Taddy Macfarlane competed in the Gold Coast Marathon 10 km event along with his two sons Rob and Phil earlier this month where he won his age group 75 to 79 years in a time of 54 minutes and 56 seconds. Competing in the 45 to 49 years division Rob stopped the clock at 41 minutes 14 secs to run 12th whereas in the same group Phil finished 47th with a time of 49 minutes 30 secs.

Pictured from left Phil, Taddy and Rob at the Gold Coast Marathon.



IMACKA PROPERTY

56 Bridge Street Uralla

02 6778 3066

Iain Mackintosh 0416 160 180

www.imacka.com

8 Acres with town amenities



REDUCED FROM \$750,000 TO \$680,000

220W HILL STREET WALCHA

This 3.3 hectare property is situated on a level block on the western side of town. The three bedroom hardiplank residence has been renovated in recent years and includes a large kitchen with dishwasher, gas cooktop, island bench and breakfast bar. New floating timber floors extend to the lounge/dining area and the media room. Two of the bedrooms have built-ins and reverse cycle air conditioners while the lounge room has a slow combustion wood heater and reverse cycle air conditioning.

The attached enclosed pergola includes the BBQ area. Plantation Shutters on the windows throughout the house are designed to adapt to the weather changes. Adjoining the house is a new studio that has reverse cycle air conditioning and all the attributes of a granny flat.

Other improvements: double garage with workshop, two stables, storage sheds, chook run, 6 dog kennels, 2 dams. Surrounding the house are beautifully established gardens plus raised garden beds and a greenhouse.

KEEN VENDORS - ALL OFFERS CONSIDERED



EXCEED PROPERTY MAINTENANCE



PHONE GREG
0401 344 537

- Roof Repairs
- Residential Carpentry
- Gutter Cleaning
- Solar Panel Cleaning
- Chimney Cleaning
- Int/Ext Painting
- Hedge Cutting/Tree Pruning
- And much more

25 YRS EXPERIENCE, LICENSED & INSURED lic no 356559c

Nick Moore PLUMBING & EXCAVATION SERVICES

WALCHA & SURROUNDING AREAS



Highly qualified and experienced plumber
All aspects of Plumbing and Gas Fitting
Wood heater installation
Roofing and Guttering
Gold License No 59555C

Nick 0418 691 306
nickmoore203@yahoo.com.au
Katy 0422 034 660



CURTIS

MOWERS & SMALL ENGINES



- Mowers • Ride-ons
- Pumps • Chainsaws
- Whipper snippers
- Chain sharpening
- Bar dressing

SELLING New 30 & 40 Tonne Petrol Hydraulic WOOD SPLITTERS from \$3,100 delivered
• Chainsaw chain •

JAMES – 0488 020 762 (7 Days)

TRU BLU RECYCLING

CASH FOR CARS & TRUCKS

ANY CONDITION

TRUSTED LOCAL OPERATOR FOR OVER 15 YEARS

Mark 0412 310 650

SELF STORAGE
NORTH STREET – WALCHA
VARIOUS SIZED SHEDS
SECURITY FENCED
67773899 0428 653 307

Tree lopping
Tree removal
Truck & chipper
Bobcat
Post hole digger
Trencher
Woolshed cleaning
Stockyard cleaning

Scott Kermode
0427 100 889

TREETOP services
treetopservices@bigpond.com

M L MASSAGE THERAPY

Remedial and Sport Massage

MADDIE LANCE
TUES TO FRI 9AM - 6:30PM
0432 635 994

MOBILE TREATMENTS AVAILABLE

CHIROPRACTOR

K Samantha Goor
B.Sc. Anatomy (NSW) M Chiroprac (Macq)
Tuesday & Friday from 9.00am
6777 1340

GRAPHIC DESIGN

CORPORATE IDENTITY & LOGO DESIGN
BRAND GUIDELINES • SIGNS • BOOKS & MAGAZINES
ANNUAL REPORTS • CATALOGUES • BUSINESS CARDS

0418 281 489 • OSCARWAUGH@GMAIL.COM

ENGINEERING

John Wall

• Stock floats • Feeders • Sheep & cattle yards • Steel framed sheds & mobile welding

6778 0588 • 0428 778 087

WALCHA HIRE

Andrew: 0427 549 748
Toni: 0421 972 354

MOBILE-FIX AUTO+AIR

Mobile Repairer & Airconditioning Specialist

Licensed Vehicle Repairer
Lic.No.46696 RTA Lic.No. AU22616

PATRICK STACE – WALCHA
Mob. 0428 780 077 Ph. 6778 0595

STACES FAST FREIGHT

Delivering
Tamworth – Walcha
0429 608 409

A G W RURAL CONTRACTING

GPS Equipped boom spraying
Andrew Wauch 0427 549 748

DISCLAIMER LETTERS TO THE EDITOR are submitted on the condition that The Walcha Telecottage as the publisher of The Apsley Advocate may edit and has the right to, and license third parties to reproduce in electronic form and communicate these letters. They are published at the discretion of the Editor and Board. The Apsley Advocate is printed by The Walcha Telecottage, PO Box 116 Walcha NSW 2354. Phone 6777 1111 Fax 6777 1112. The Walcha Technology Co Operative Limited, the Editor and Staff of this Newspaper have published any article here-in in good faith and bear no responsibility in respect to the accuracy of the information contained in such article. Any person or persons publishing material in this Newspaper do so in the knowledge that they shall personally accept any responsibility for the accuracy and other correctness of such articles and also accept full responsibility for the legal consequences if it be found that the article contains any inaccuracies in the contents of any such articles. **DEADLINE MONDAY 4.30PM**
Editor: Anthea Macpherson. Advertising and Sport: Rosalie Gibson, Megan Scrivener, Emily Scrivener and Joscisca Matapakia.



Wednesdays Golf

The NSW Women's 4BBB Ambrose Qualifier was programmed for Wednesday's golf, playing for Polly Locke and Penny King's trophy.

As the final of this event will clash with the NSW Sandgreen championships, which are being held here in Walcha on the 21st and 22nd October, it was decided to just play a 4BBB stableford instead.

The winners of this were Cheryl McDonald and Sally McCormack coming in with a score of 37.

First sweepstakes went to Polly Locke and Cark Street with 36, on a count back from Lyn Laurie and Robyn Salt with 36, counting out Margaret Davidson and Jenny Lisle.

Today we are playing Par for Ruth Fletcher's trophy.

At the Nineteenth

Club Vice President and Director Miles Archdale won the monthly stroke medal round after he carded a four over par 74 which equated to a 64 nett and entitled him to collect a trophy donated by Doug McDonald.

He also took out the best scratch score on the day, the putting competition after engaging his flat stick on just 20 occasions and picked up the A Grade Mug.

B Grade went to Doug McDonald with a 69 nett during a round which also included N.T.P's on the third and ninth holes.

Sharpest shooters at the other pins were Cheryl McDonald (16) and Margaret Davidson (18) while Rose Baumer hit the most accurate ladies second shot on 7 and Owen Presnell produced the best mens second shot on 10.

C Grade went to Rose Baumer on 71 nett whereas sweepstakes were claimed by Michael Stackman and Willy Brennan both on 70 nett.

The coveted 'Pink Shirt' for most putts was eagerly received by Pauline Carter after she registered 34 jabs.

Long drives sponsored by Tony 'Backhanded Larry' Asmus were caressed by Andrew Crawford (A) Sam Churchill (B) and Andrew Robertson (C).

Last Saturday John McCormack won the weekly Saturday competition over nine holes when he accumulated 17 stableford points a couple of points clear of runner up Col Higgins on 15 pts.

This Sunday is a 4BBB stableford Medley for prizes supplied by Max Holstien and Bill Heazlett.

Ladies Bowls

A game of pairs was played last Thursday with Sari Andrews and Esther Hunt winning against Marg Tickle and Janice Rizzi 16-7.

There are nomination sheets on the board if you wish to play in the District games.

The AGM is on Thursday 17 August. Nomination forms for executive and match committee positions are on the board. Nomination box is behind the bar.

There will be social bowls tomorrow 9.30am for 10am.

Bowls

Dads Army: Twelve players turned out for our Thursday afternoon game of bowls. At the time of starting the sun was shining brightly but as the afternoon went on the weather became cooler.

Two games of triples were played and at the end of play Terry Parker, Alan Goodwin and John McCormack held a 18 - 12 win over Brian Goodwin, Peter Hayes and Geoff Salt.

In the second game Noel Goodwin, John McLean and Warwick Hogan defeated John Watts, Eric O'Keefe and Adam Hall 17 - 6.

Noel's team won the chooks and Terry and Julie Hall won the raffles.

Results from the weekend.

D.Bird, S & K.Goodwin defeated I.Bird, T.Asmus & N.Dark 27-10 E.O'Keefe, N & B Goodwin defeated G.Bird, G.Carter & R.Kerr 26-19.

Draw for this Saturday pairs :

M.Hamel & M.Steep v T.Parker & F.Cameron.

G.Marshall & J.Byrne v M.Hoy & M.Wall.

N&B.Goodwin v G.Carter & R.Kerr.

Rugby League

With three rounds remaining in the Group 19 Rugby League and Ladies League Tag competitions the Walcha/Uralla club travel to Glen Innes this Sunday followed by a home game against Bingara here at Peter Fenwicke Oval the following Saturday before playing their final competition games against Armidale at Woodville Oval the next Saturday.

Currently the mens competition pointscore is as follows Guyra 18, Narwan and Inverell 14, Moree and Bingara 13, Glen Innes and Tingha 10, Walcha/Uralla 8, Armidale 6, and Warialda 4.

The Ladies League tag points score is Tingha undefeated on 22, Warialda 16, Guyra and Inverell 13, Jillaroos 12, Bingara and Glen Innes 11, Narwan 10, Moree 2, and Armidale 0 meaning the Jillaroos have drawn three teams below them on the ladder for their final three matches.

thumbs



👍 To the assistant in Foodworks who found my purse I had and returned it to me. I was very grateful, thank you.

👍 To Kelly at the Chemist in Walcha for her great help with recommending and explaining medication I wished to purchase. Much appreciated.

👍 To Walcha Council and their holiday Little Master Chefs Workshop at the Walcha Motel last week. The kids had a great time.

👍 To the friendly and helpful staff at Council's Service NSW desk.

👍 To Maria at Laverty Pathology for her friendly and professional service. We missed you while you were away.

Contributions will be received in person, by phone or email and must be accompanied by your name and contact details. They will be printed at the discretion of the editor.

Gubi Gabun Children's Mobile Service

- Free play session on Tuesday mornings, fortnightly from 10am – 12 noon at the Anglican Hall in Walcha.
- All families and carers of children 0 – 5 years are welcome to attend.
- Each session is facilitated by trained early childhood educators and the program is led by an EC teacher.
- The first session for Term 3 is Tuesday 18 July 2023.

Hope to see you there!



telecottage
WALCHA

Design, print and secretarial services

Need a Sale Catalogue?
Contact us today.

- Business Cards
- Stationery
- Invoice/receipt books
- Labels
- Brochures
- Resumes
- Cards
- Stamps
- Photocopying
- Laminating

Phone 6777 1111

wtc@walchatelecottage.com.au



Funeral Notice

~ **Hoad; Nancy Jane** ~
11th July 2023
Of Fitzroy Street, Walcha

Loved wife of Ron 'Digger' Hoad (dec)
Loved mother and mother-in-law of Brian
and Kristine (dec) and Barry and Julie.
Loved sister and sister-in-law of Betty and
Alec and Joan and Archie (dec).
Much loved grandmother, great
grandmother and great-great
grandmother of her family.

Aged 94 years

Funeral service to be held at
Piddingtons Funeral Chapel, Armidale
Tuesday 18th July 2023
commencing at 10am.

Piddington's AFDA 6772 2288

Meetings

**Westpac Rescue Helicopter Service
Walcha Volunteer Support Group AGM** to
be held 18 July 2023 at Council Chambers,
Hamilton Street, Walcha at 5:30pm. All
welcome. Olive Chandler.

You are invited to attend **Walcha Hospital
Auxiliary AGM**, 20 July 6.00pm at Walcha
Council Community Care rooms. Enquiries
to Vicki 0427 772 950

Little Athletics Committee formation
meeting, Wednesday 16 August, 6:30pm
at the Apsley Arms Hotel. Elyce Laurie
0448 165 284, Jess Williams 0418 827 088.

AMAROO LOCAL ABORIGINAL LAND COUNCIL (ALALC)

Notice of Ordinary Members Meeting

Date: 13 July 2023
Time: 4:00 PM
Venue: 36N Derby Street, Walcha (Café)

AGENDA:

- HOUSING
- LALC OPERATIONAL REPORT
- SUMMERVALE ABORIGINAL VILLAGE
- LAND ISSUES
- COMPLAINT PROCESS
- ASSETS
- MEMBERSHIPS

Please Note: No other agenda items can be
added.

Enquiries: A.Stackman,
Chairperson – (02) 67771100.

Public Notices

DR GENEVIEVE FREER
Phone 6777 2068 0429 668 583

Rose Pruning Demonstration at Apsley
Riverview, 20 July commencing 9.00am.
Contact Diana Lisle: 0429 799 083

Walcha Barber Shop closed this Friday and
Saturday. Re-opening Tuesday 18 July.

AMAROO LOCAL ABORIGINAL LAND COUNCIL

Notice of Community Land & Business Plan (CLBP) Workshop

DATE: 20 July 2023

PLACE: Amaroo Cafe

TIME: 4.00pm

AGENDA:

1. Community Land and Business Plan
Workshop

Please Note: All Members and Aboriginal
persons who have a cultural association with
the land within the LALC's area are encouraged
to attend and participate in the workshop.

Authorised: Alena Stackman,
Chairperson – Amaroo LALC

Draft Waste Strategy on Public Exhibition and Waste Collections Calendar 2023 – 2024



Council's draft Waste Strategy is now out
on public exhibition and we would like your
feedback. The draft Strategy is available
on Council's website via our News page.
Submissions should be addressed to the
General Manager via council@walcha.nsw.
gov.au by COB Friday 28 July 2023.

The distribution of the Waste Collections
Calendar for 2023 – 2024 will be delayed
until all community feedback on the draft
Waste Strategy has been received and
considered. Until then, collections for July
and August 2023 will continue on Thursdays
as normal, see dates below. Hard copies
are also available over the counter at our
Customer Services Centre.

Collections*		July 2023				
General (Red)	6th	13th	20th	27th		
Green Waste (Green)	6th					
Recycling (Yellow)		13th		27th		
Collections*		August 2023				
General (Red)	3rd	10th	17th	24th	31st	
Green Waste (Green)	3rd				31st	
Recycling (Yellow)		10th		24th		

* All Collections are on Thursdays, unless
otherwise notified.

Expressions of Interest

Walcha Council Expression of Interest for Photographer



Walcha Council wishes to invite applications
from local photographers to submit an
expression of interest to take photos for the
Walcha Preschool in 2023. The successful
photographer must hold a valid Working with
Children Check. Photographs are required to
be taken during Term 3 and delivered to the
Preschool before the end of October.

As children attend preschool on different
days, photography sessions will need to be
arranged to ensure all children are able to
be photographed. This means attending the
preschool each day for one week.

An ability to take creative portraits of children
aged 3 to 5 years old is a must. Photos that are
required to be taken and printed are:

- Individual and sibling photos - 3 images per
child for approximately 79 children (print size
5 x 7")
- Class Group photos (two classes) – 10
images (print size 8 x 10")
- Group and individual staff photos – 1 image
(print size 8 x 10")
- Special orders (reprints) from families
are a possibility, and would generally
require delivery before the end of school in
December.

Please include in your Expression of Interest:

- a cover letter outlining your previous
experience
- Working with Children Check (volunteer
check acceptable)
- examples of previous work and references if
possible
- hourly rate for photography sessions
- cost per print and reprints of various sizes
- Please indicate if you are able to offer a
digital copy of photos as an option, and the
cost of this.

Please ensure your time costs for editing and
printing photos are included in the cost per
print.

Expressions of Interest can be emailed to
council@walcha.nsw.gov.au before Friday
21st July 2023. For further information, please
contact Karen Kermode on 0497 772 157.

Phillip Hood, Interim General Manager Walcha Council, PO
Box 2, Walcha NSW

THE APSLEY Advocate

DEADLINES

4.30pm Monday for
editorial, advertising and sport



Position Vacant



SEASONAL FORESTRY WORKERS WALCHA/TAMWORTH

What we can offer you:

We have multiple roles at FCNSW which will include identified Indigenous roles:

- 2 Year Maximum term roles starting late August – early September
- Permanent and Casual opportunities starting late August – early September
- Work in the great outdoors with a passionate and diverse team
- Opportunity to grow your career with FCNSW
- Acquire a nationally recognised qualification in firefighting
- Gain qualifications and experience in operating 4WDs, herbicide application, chainsaw use and first aid.
- Receive benefits such as: applicable penalty rates and additional loading for fire-fighting duties.

What you will be doing:

We are seeking enthusiastic and motivated Seasonal Forestry Workers to join our team and assist with a wide range of outdoor work. You will undertake a variety of activities such as:

- Hazard reduction burning and wildfire control
- Clearing and maintaining our fire roads & fire trails (which includes tree pruning)
- Assisting with forest operations, operational surveys and forest patrols
- Assisting with the maintenance of our recreational areas and facilities, vehicles and equipment
- Weed control

This opportunity is seasonal in nature and workloads and work type may vary depending on seasonal and bushfire conditions. This means you will be required to work extended hours/shift/days under physically testing conditions. You will also be part of the organisation's fire readiness strategy and will be on our fire roster. At times you will be required to be on-call at home or on standby at our forestry depot depending on the local fire danger.

About you:

We are looking for someone who:

- Embraces and demonstrates our Values and Behaviours
- Works effectively in a team to meet work standards and deadlines
- Demonstrates excellent verbal communication skills
- Has skills and/or experience in forestry, farming, outdoor or construction works
- Has basic computer skills and willingness to learn new technologies
- Hold and maintain a valid driver's licence

Not essential, but would be highly regarded:

- Experience in bushfire fighting
- Experience and / or qualifications in off-road driving, chainsaw use and chemical application
- First aid qualification
- Truck licence (MR, HR, HC etc) or experience in the operation of heavy plant
- Studying for or have tertiary qualifications, particularly in Forestry, Natural Resource Management, Natural Sciences or related field

How to apply:

Apply via our Careers Website:

<https://www.forestrycorporation.com.au/careers/job-vacancies-list>

For more information, please contact Warren Chawner – Silviculture and Fire Coordinator via email (e) Warren.Chawner@fcnsf.com.au

Applicants who reside within 45 minutes from the Forestry Depots will be looked upon favourably

Applications Close: Sunday 23 July 2023 11:59pm AEST

The successful applicant will be required to satisfactorily complete a Drug and Alcohol screening, and Medical Assessment and/or a Fire Task Based Assessment (TBA). The successful candidate(s) must be fit to perform firefighting activities, which may include working in smoky conditions and the ability to be physically active in uneven or steep terrain. Offers of employment for these roles are subject to the results of the pre-employment Medical Assessment which may preclude candidates for high-risk conditions from being able to meet the inherent requirements of the role.

Position Vacant cont.

Walcha Council Community Care



2 Positions are available now in our dedicated and passionate Community Care Team.

Community Care Officer

Assisting with developing and delivering all the services that the WCCC provides to the Walcha community, this position is Permanent Full-time.

Community Care Administration Officer

Providing administrative assistance to the team, this position is Permanent Part-time with a minimum of 15 hours per week.

You will be working as a valued member within a friendly, supportive and encouraging environment, and your actions will reflect Walcha Council's core values of teamwork, respect, customer first focus and willingness to carry out assigned tasks to the best of your ability. Council is an EEO employer and is a smoke free workplace. For more information, and to apply, visit Council's website – Positions Vacant Section. <https://bit.ly/3A30YDc> Applications close Monday 24 July 2023.

Small Council, Big Opportunities!

Phillip Hood, Interim General Manager
Walcha Council, PO Box 2, Walcha NSW

For Sale

DJ'S Firewood – Best wood in the district. Bulk only – minimum 6m³, maximum 10m³. Deliver Walcha Saturday OR pick-up from Niangala Saturday 1.00 – 4.00pm. Phone 0427 335 631 or 6769 2395.

Layer pullets. All breeds. 20 wks. Delivered Friday 21/7/23. Phone Jim 0428 194 105

Raffle Results

Golf Raffle: Winners Kevin Creighton and Margaret Cross. Thanks everyone for your support.

church notices



ANGLICAN

9.30am Family Service.

All welcome. Phone 6777 2543 or email: walchaanglican@gmail.com

PRESBYTERIAN

Walcha Sunday 9.30am.

All welcome. Phone 6777 2539.

CATHOLIC Sunday 10:00am Mass.

Marchant BROS. PTY. LTD. Est. 2000



A FULL RANGE OF AFFORDABLE TRANSPORT & EARTHMOVING
COMMERCIAL WATER CARTING
 Dam construction/maintenance, stick raking, road building,
 site prep, pipe laying and all timber work.

Check out our website for the full range of machinery,
 attachments and services available



**FIREWOOD ORDERS CURRENTLY
 CLOSED UNTIL WE CATCH UP ON ORDERS**

ORGANIC, LOW SMOKE, HIGH HEAT.
 Beat the climate change, order now

Earthmoving and Heavy Haulage Transport
Jason 0427 490 487
 02 6777 2024 marchantbros@bigpond.com
 www.marchantbros.com.au

WALCHA BOWLING & RECREATION CLUB

Mon – Wed 4.00pm – Close

Thursday 13 12.00pm – Close

Ladies bowls 9.30am for 10.00am start
 Social bowls 1.00pm

Friday 14 2.00pm – Close

2.00pm Bingo

6.00pm Bistro

- Homemade meat pies.
- Chicken and cashew stir-fry.
- Baked fish topped with prawns.
- Normal menu available, takeaway and delicious dessert.

6.00pm Tickets available for raffles –
 meat and veg trays

6.00pm Free Bingo

7.00pm Raffles drawn & Members Draw

Saturday 15 11.00am – Close

6:00pm Bistro

2-4pm **TOSS THE BOSS**

Sunday 16 11.00am – Close

12.00pm Bistro open

Children U/10 kids meal free with an
 adult order

12.00pm Meat, fruit and veg raffles

12-2pm **HAPPY HOUR**

**MEMBERS
 DRAW
 \$150**

YOU MUST BE A MEMBER FOR
 2023/2024 TO BE ELIGIBLE TO WIN

**Friday 21 July
 Christmas in July
 Santa arrives 7pm**

**Dress up competition for
 best Christmas theme**

Pinata for the Children
 Colouring in Competition -
 entries available at the club now.

**TOM'S COCKTAIL
 'COSMOPOLITAN'**

Social Bowls

Available during opening hours.
 See staff regarding bowls
 equipment.

YEARLY SUBS - NOW DUE

Do you live in Walcha Shire? If so you **MUST** be a member to enter the Club
Social Membership \$15 – Full Membership \$105. PHONE 6777 2077

FOR ALL YOUR EARTHWORKS
 TRANSPORT AND ELECTRICAL NEEDS

ALL ASPECTS OF RURAL, COMMERCIAL & CIVIL WORKS



- Freight & Transport • Machinery Float • Stick Raking
- Road construction and maintenance • Trenching
- General Earthworks • Drilling • Mulching
- Dam maintenance and construction
- Erosion Control • Site Preparation • Electrical Works

Ian Notley 04188 29188 • Mark Notley 0422 637 686
 www.eteservices.com.au



LINMAC ENGINEERING

**IF YOU NEED IT
 - We make it!**

**CUSTOM TRAYS
 & TIPPERS**

**HUSQVARNA
 DEALER**



- Customer consultations to make sure we build to YOUR individual specifications
- Sandblasted and powdercoated
- Toolboxes, timber floors, tipper trays, water tanks ... whatever you need!

**PURCHASE
 A CHAINSAW**

in the months of
 June, July & August

for a chance to

**WIN A SHARP
 MASTER CHAIN
 GRINDER VALUED
 AT \$120**



Facebook page: Linmac Engineering Walcha

211N Pakington Street WALCHA
 Phone 6777 2822
 Email enquiries@linmacengineering.com.au