

THE APSLEY Advocate

CIRCULATION 1810 – P 02 6777 1111 F 02 6777 1112 wtc@walchatelecottage.com.au walchatelecottage.com.au

17 May 2023

EST. 1865
COMMERCIAL
HOTEL
WALCHA NSW

OPEN

7 days week from midday
For Real Pub Food

LUNCH + DINNER
Tuesday – Sunday

MONSTER RAFFLE

Friday nights
Drawn 7.30pm

Proud sponsors of Walcha
Rugby, Walcha Cricket, Walcha
Jockey Club & Walcha Tennis
DONATING TO LOCAL CHARITIES

COMMERCIAL LANE
PHONE 6777 2667


AuctionsPlus

Friday 19 May

A/C D&N Powell
60 EU Angus Weaner
steers

A/C Abbottsley Pastoral
53 PTIC Angus second
calvers in calf to
Wagyu bulls

A/C J & L Radburn
30 Mixed sex Speckle
Park weaners

Contact Mat Larkings
0427 002 427

  **Boulton's**

Derby St Walcha P 6777 2044

Unique attraction now open



Alan Churchill put the finishing touches on his project, titled, 'It's Not a Train Set' just before Christmas, which he has now opened to the public to enjoy.

The project which took Alan over seven years to build combines sculptures with a working model railway, and is a feast for all of your senses. With over 1200 miniature figures, 4500 LED lights and 125 metres of track, woven through abstract and semi-abstract sculptures, there is so much to discover.

Alan started his career as a Silversmith Designer in the UK, with his first job being a Master Model Maker in London making miniature figures for two years. After returning to study and qualifying as a teacher Alan began teaching manual arts and art in the UK. Later teaching took the family from the UK to Nigeria, Papua New Guinea and finally to Australia. Retiring after 31 years of teaching, Alan then designed and made vacuum machines for the equine industry and Councils for ten years.

'It's Not a Train Set' combines all of Alan's skillsets. "I had a bit of a 'lightbulb' moment and decided to

combine my modelling interests with my technical skills to create an environment that is 'different'. On a trip to Europe I managed to see the Miniatur Wunderland in Hamburg. It's in the Guinness Book of Records as the world's largest model railway. It was inspirational, but it did convince me to do HO scale railway and it did convince me I was not going realistic," Alan said.

The project transports you around the world with Alan combining elements from all the places he has lived and many landmarks in his travels, with the sculpture of Millau Viaduc bridge in France being a definite highlight.

Since opening to the public earlier in the year, Alan has had numerous travellers visit 'It's Not a Train Set'. Located in Apsley Street, Alan is happy to show people through, with no charge, however donations would be appreciated. "I've had lots of visitors, particularly from Queensland," he said.

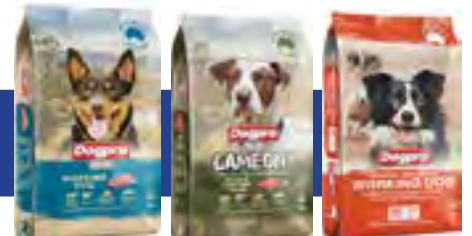
Want to know more or to book? Visit: itsnotatrainset.au or call Alan on 0491 737 669.

Looking for dog tucker?

We've got you covered.


WVS
WALCHA VETERINARY SUPPLIES

**Dogpro in-store
deal now on**



6 Aberbaldie Rd Walcha. Ph 6777 2588. www.wvs.com.au



OK EARTHMOVING

Specialising in road construction & maintenance

• Stickraking • Dam building • Erosion works



Bulldozers • Excavator • Tip-truck • Vibrating Roller

PH 6777 7430 FAX 6777 7448

PETER O'KEEFE: 0429 944 821



**BROOKLYN
QUARRY**

*Commercial Grade
Quarry materials.*

***Accredited and
registered Quarry.***

**LOCAL
DELIVERIES
AVAILABLE FOR
APRIL.**

**MAY- Limited
availability for
deliveries**

*40mm roadbase is
ideal for driveways,
stock yards and most
other areas.*

*We have a variety of products that
will suit your every need:
big rocks, small rocks,
rocks of any size!*

SCOTT@BROOKLYNQUARRY.COM.AU
0434 011 570
1643 OXLEY HWY, WALCHA RD. NSW
(BY APPOINTMENT ONLY)
WWW.BROOKLYNQUARRY.COM.AU

around the traps



By SIMON NEWTON

The past week has been a run of real Autumn weather with a slight frost in the morning followed by some nice sunny days. There is nothing like a few frosts to change everyone's mind about how harsh our winter will be on livestock and feed reserves. What moisture was about has been sucked out and once the frost has turned the fresh grass brown, people begin to panic. We could really use a nice fall of rain now to freshen the crops and pastures up, but we are still in quite good shape in comparison. Speaking with people from Moree on Saturday they mentioned that only a few people have begun planting east of the Newell highway while those croppers west of the Newell hadn't even started. Another person mentioned in a trip to Wodonga that the only reasonable country in good shape was Walcha and Holbrook.

The forecast ahead for rain in May doesn't look that bright with only a slight chance of some light falls predicted. Large areas around NSW haven't seen much rain at all for 2023 and we can see livestock markets responding to these conditions. The cattle market has slipped dramatically over the last few weeks with large volumes of light weaners and middle weight yearlings destined for crops hitting the market now. The areas of the state that plant large volumes of grazing crops are nearly non-existent or haven't had enough rain on the crop to produce enough feed for the stock.

There are reports that some graziers are beginning to hand feed and agistment blocks are running out of feed. It's not a day that passes that we don't have enquiries for agistment as people are asked to leave these agistment paddocks with some graziers opting to hit the long paddock. There are more and more mobs of cattle grazing the roadsides throughout the western parts of NSW and more likely more to head that way. Agistment is available but you need to start looking north around Blackall, Winton and Longreach which by all reports are having an outstanding season. The only issue is that a B double of cattle will nearly get lost in the size of some of those paddocks up north and they will need to be able to walk long distances to water.

Kill space is getting harder to find with many of the processors out by nearly six weeks. Heavy slaughter export cattle look to be topping out at 680c/kg, while cows have dropped to 470c/kg in the past week. The lamb market is currently holding around 680c/kg while the mutton market came down as quick as it went up, sitting around 400c/kg to slaughter. Quality store lambs are still sought after, especially 35kg plus as lamb fatteners can be assured, they can fatten these weight lambs in the required time frame before they cut teeth. The heavier the store lamb the quicker the turnover and the more likely they will be grain assisted to get them as heavy as possible.

Treasurer Jim Chalmers delivered the Labor budget last week and I must admit there are plenty of issues in my eyes, especially for us who live in rural communities. I agree with the Government's decision to beef up Australia's biosecurity measures, especially with the ongoing threats of FMD, but I do not agree that farmers need to pay for the biosecurity costs of importers from other countries. Grass fed beef producers will now pay an extra 50 cents per head on your levy, that is a 10% rise which will be seen throughout all livestock transactions. I don't have the space nor the time today to dissect the changes that will come about to the national infrastructure investment program but be aware it will be a shake up with the Government announcing it will only invest in projects that are truly nationally significant. We have been left out before, no doubt it can happen again.

Tamworth yarded 2463 head on Monday as the pre-winter offload continues and the market continued to trend downwards. The best of the weaners topped at 396c/kg for 270kg of Angus weaner steers, feeder heifers sold to 342c/kg while Angus feeder steers topped at 396c/kg for 464kg. Domestic kill cattle made to 360c/kg for 560kg while cows topped at 233c/kg for 667kg. Tamworth yarded 5200 sheep and lambs with heavy kill lambs quoted to be \$10/hd dearer topping at \$257/hd, while trades sold to \$180. XB ewes topped at \$160 while merino wethers made to \$154.

Local youth hit the gym

In collaboration with local youth, Walcha Council have recently received a grant from the NSW Governments Youth Opportunities Program to kick off the "Walcha Youth Gym Project". This project, set to run throughout 2023, was designed with and led by the youth of Walcha.

The need for this project was highlighted by a group of young people back in 2019, when the new Walcha Community Gym was being built, as part of Council's consultation with the Youth Advisory Committee.

The aim of the program is to set up the support and resources young people need to make the Walcha Community Gym inclusive of all Walcha youth and engage local resources to better the health and wellbeing of young people in the community.

The youth who have registered to take on this project have selected goals and strategies, a brand and ordered equipment, and a schedule and set of topics for training over the next six months.

Those who complete the program will celebrate and share their accomplishments with the community. They will then be able to continue with



their development and pass their learning onto their peers in the community when they are awarded membership to the gym for a further 12 months.

There were initially 20 young people interested in the project, but there are currently 5 places available.

Anyone living in the Walcha LGA, aged 16-24 years who would like to learn how to make



the most of the state-of-the-art gym facility in Walcha, is encouraged to register.

Training sessions will be Wednesday afternoons/evenings, fortnightly from the 17 May.

Those interested should contact Cassie McKenna, the Walcha Council Library & Youth program coordinator to register their interest on 6774 2550 or library.youth@walcha.nsw.gov.au



Stock and Property Watch

www.nutrienharcourts.com.au

Space to move *Fibro cottage in a peaceful area on 2023sqm block*



- 3 bedrooms – one with built-in robe
- Open plan kitchen/dining
- Kitchen with gas cooktop & oven. Walk in pantry
- Lounge with wood heater
- Bathroom – Shower, toilet & basin

- Northerly facing sunroom
- Separate laundry with bath and second toilet
- Grandparent retreat with separate bedroom/entertaining room
- Fully fenced yard with several garden sheds for storage

Enquiries to Peta Carter: 0407 350 781

\$375,000



Mayoral Column

Eric Noakes, Walcha Mayor



BUDGET AND OPERATIONAL PLAN

The end of a financial year is also budget time for all levels of government. A tough time for the bean counters in any organisation and Walcha Council is no different. This year's Draft Budget will be presented to Council today (17 May) and all going according to plan will then be on public display for 28 days. This period allows the public

to make relevant submissions to Council in relation to the budget prior to formal adoption on the 28 June. The budget will form part of the Operational Plan which in-turn links to the Delivery Plan and Community Strategic Plan, a requirement under the Independent Planning and Reporting legislation.

Since presenting a Special Rate Variation (SRV) to our community last year based on the detailed assessment of Professor Joseph Drew, everyone within the organisation has worked hard to present a balanced budget. Ensuring projects are delivered on time and within budget, a focus on our core business and trimming non-targeted expenditure (the fluffy bits) has contributed to an improvement in Council's financial position. The bottom line is obviously contingent on a successful SRV outcome, an announcement that is imminent.

As the saying goes "one swallow doesn't make a summer" we must then adhere to our budget and continually focus on maintaining a positive financial position. In the ensuing years we must constantly reevaluate what services we provide to the community, the most efficient way to deliver them, and most importantly, be transparent in our reporting and cost to deliver. Anyone who has had anything to do with Local Government understands the tight financial and governance control the State Government have in both setting our income, cost shifting onto councils and imposing and raising costs at their will.



45ft flat top • 45ft single deck cattle float • 26mtr B Double
19mtr mini B Double • Low Loader available for hire



BRIAN
Smith
TIMBER
TRANSPORT

Call us for
your large
Transport
needs

WALCHA
02 67772126

Bonnie Smith 0429 772 077
Brian Smith 0427 780 216

EMERGENCY SERVICES LEVY

A recent example of the aforementioned cost shifting to councils is the increase in the Emergency Services Levy. While no one questions that funding of emergency services is essential, the source of the funds is the contentious issue. The ESL is effectively Council funds raised through rates, and paid to the state government who provide the services. A quick read of the draft budget sees Council's cost to RFS @ \$290,000, Urban Fire Brigade @ \$35,000 and Emergency Services Levy @ \$36,000. This total is in the vicinity of \$361,000 out of a current General Rates revenue of \$3.8m – i.e. 10% of all rate revenue. These payments are compulsory and are not capped like our rate revenue is. As I said earlier no one would ever dispute the funding of these services, especially after the devastating natural disasters we have witnessed in the last 5 years but it's not reasonable to push these costs onto local government. The cost alone to the RFS for this year has risen from \$186,000 to \$289,000 including depreciation, while our capacity to fund this increase is capped at 2.7% (\$5,000).

VOLUNTARY PLANNING AGREEMENT (VPA)

As part of any large development the developer is obligated to offer a Voluntary Planning Agreement to the relevant council. The Winterbourne Wind Project is no different. Despite what you may have heard, read or interpreted Walcha Council has not finalised an agreement for this project. The draft VPA presented to both Uralla and Walcha Councils was rejected by both and we will continue to negotiate on behalf of the community for a fair and equitable outcome that has correct governance surrounding it. With more projects mooted for our area Council needs to mandate a set of criteria that recognises and compensates our community for their impacts, both on infrastructure and social. Last year council resolved to take a neutral position on this project, a position it still holds while maintaining a critical dialogue with both the proponent and the Department of Planning. Council acknowledges the State Significant Development process and the Department of Planning's ability to make just recommendation to the Independent Planning Commission who ultimately will have the final say.

While ever projects are sitting in this phase it continues to cause division in this community but the reality is there may be over a year to go yet.

COMMUNITY ENGAGEMENT

Being widely advertised at the moment is Council's next round of community engagement meetings. Interim General Manager Phil Hood felt we should do this earlier during budget season to allow residents to ask questions in relation to the budget. While the budget is centrepiece to these visits no part of Council's performance is off the table. Roads are always front and centre and with council being the recipient of healthy State Government funding in this area we will be asking for your thoughts on where this money is being spent. Water security, renewable energy, waste management, services and their delivery, sustainability and any other issue that Council is responsible for can be on the table. I encourage you to attend one of the venues listed elsewhere in this fine publication and ask your questions. This is your money we are spending and transparency of this process is vital to council, remembering that it is a fine line between service delivery and financial security.

Accompanying Councillors and staff on these visits will be Kruthika Nagananda Council's Disaster Risk Reduction Coordinator. This is a grant funded position, with the aim of having our community prepared when and if another disaster occurs. Holding a Masters in Disaster Reduction and Sustainable Development, Kruthika's role is to identify risks and offer mitigation support to businesses and individuals. I believe that historically for a community like Walcha this may not have been a priority, but the devastating bushfires, constant closure of the Oxley Highway, the 2018 windstorm and severe flood damage highlight issues that impact the day to day operation of any business. Personally I would like to see drought included as a natural disaster to make accessing information easier but at this stage it is not. Besides our regional meetings there will be plenty of opportunity to engage with Kruthika around risk, grants and funding that is available.

Last Farmers' Market before winter

On Saturday 20 May, the final Walcha Farmers' Market for the season will be held at McHattan Park, Walcha. Don't miss your last chance to enjoy our community market before winter!

Kerry Carey will perform a dance at 10am. You are welcome to support and encourage her in this by donating to support Ukrainian dog shelters on the day. Howard the Banjo Man and Barbara the Squeezebox Lady will be back to entertain us.

Armidale RSPCA will be back again, doing microchipping and subsidised desexing of companion animals at the market. Please bring your animal along in a suitable restraint.

There will be a few new stalls this month including Ezidi Community Group with fresh produce. Young Thom will be at the market as Thom's Fruit and Veg, and Lesley Andrews will be there with fresh home grown produce and hand-knitted and crocheted items. Jazz Hayton will be serving Walcha Coffee. The Guyra Potato Man (a seasonal favourite) will be there with his spuds.



Carinya North Nursery's Denise Cox with a selection of plants for your garden.

There will be an array of your favourite stalls, with sweet things (pastries, cakes, slices, macarons, condiments, honey), fresh bread, plants, smoked fish, bacon and egg rolls, and much more. If you have excess produce, please bring it along to the community stall and they will sell it for you. It is always appreciated if it is priced beforehand.

So come along and enjoy the ambience of the market in Walcha's beautiful McHattan Park with the last of the autumn colour. 8:30am – 12:30pm, Saturday 20 May. The markets will then be in recess until resuming with the new season on Saturday 16 September.

thumbs



- 👉 To Murray Rose and Harley for repairing our broken window on Saturday. How lucky are we in Walcha to have such obliging, thoughtful tradesmen.
- 👉 A big thank you to the Walcha Ambulance paramedics for their expert care after my fall. It was greatly appreciated.
- 👉 To St Patrick's School for a great Mother's Day breakfast.
- 👉 To all the volunteer sewers, especially Jane, Jen and Sue, for the beautifully handmade library bags they have donated to the Walcha Library's Baby's first library bag program.
- 👉 What a disappointing attempt by the developers of Ruby Hills Wind Farm to inform the Walcha residents concerning the turbines. We are none the wiser.
- 👉 To the Walcha Energy Information evening for the lack of an open forum and unwillingness to answer questions.

Contributions will be received in person, by phone or email and must be accompanied by your name and contact details. They will be printed at the discretion of the editor.

Computer scam

A local was last week scammed on their computer when doing an internet search.

This Microsoft Windows scam will start flashing on your screen and giving you a warning. The warning reads 'Microsoft warning – your computer is blocked' and advises you to ring a number to unblock your computer.

What ever you do **DONOT** ring the number and immediately turn your computer off at the wall and call a technician.



QUOTA CLUB MOTHERS DAY RAFFLE

Won by Herbert Higgins

THE PRIZE was \$1000 worth of vouchers to spend in Walcha with Walcha businesses.



Local businesses are asked to accept the vouchers and get in touch with

Julie Yates on **0427 780 132** or

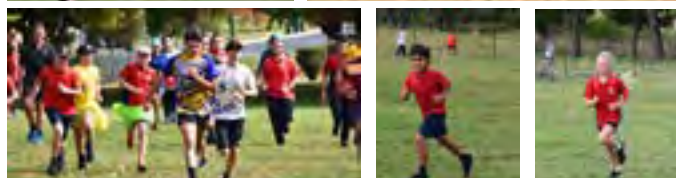
Chris Hamel on **0437 772 333**

and they will be reimbursed with cash.

Thank you to everyone who bought tickets.



a journey of learning from K-12
WALCHA CENTRAL
School **NEWS**



Open Invitation

Anzac Day
25 April 2023



Thursday 25 May
10:30 - 12 noon
Walcha MPC
Prepared by
Hands on Learning
RSVP 22 May
HANDS ON LEARNING



PHONE 6777 2777

154E NORTH STREET WALCHA NSW 2354

WWW.WALCHA-C.SCHOOLS.NSW.GOV.AU

MARKETS THIS SAT!!

Join us

FOR AN ARRAY OF
SEASONAL PRODUCE,
FRESH COFFEE,
SWEETS & PASTRIES,
BACON & EGG ROLLS,
PLANTS AND TREES
PLUS MUCH MORE!!!



**GOT ANY
EXTRA
PRODUCE?** *

BRING ALONG YOUR
HOME-MADE CONDIMENTS,
BAKING, FRESH PRODUCE,
PLANTS, EGGS AND SO ON TO
THE COMMUNITY STALL WE CAN
SELL THEM ON YOUR BEHALF

* SEE TERMS AND CONDITIONS ONLINE



NEW STALLHOLDERS WELCOME
WALCHAFARMERSMARKET.ORG.AU

RUGBY REPORT

WALCHA V MOREE

By Eric the Spider

RESERVE GRADE

In a challenging encounter between Walcha and Moree, it was Moree who emerged victorious with an impressive 52-0 win. Despite the scoreline, Walcha showed great determination and resilience throughout the game.

One standout player for Walcha was Ben "junkyard dog" Burwell, whose relentless efforts in defence prevented Moree from increasing their lead even further. Burwell's fearless tackles and ability to disrupt Moree's attacking plays earned him praise.

Troy "Marrow" Tape showcased his skill and agility, demonstrating excellent footwork and strategic decision-making. Despite the result, Tape's offensive contributions were evident, as he constantly tested Moree's defence with darting runs and offloads.

Toby "ID please" Moore, known for his speed and tenacity, showcased his commitment to the team's cause. Moore never shied away from taking on defenders, offering a constant threat in the backline. Cooper "Mullet fury" Boyd displayed great strength and versatility throughout the match. Boyd's powerful runs and ability to break through Moree's defensive line caused moments of excitement for Walcha supporters.

Ben "34kg wringing wet" Hall, a consistent performer for Walcha, led the team around the field well. Hall's efforts to rally his teammates, even in the face of a significant deficit, showed commitment to the team's values and belief in their ability to bounce back.

Although the final score didn't reflect Walcha's efforts, the team can take pride in their commitment and the individual performances of players showed resilience and determination throughout the match, demonstrating their dedication to the sport and the Walcha rugby community.

Points: 3 Troy Tape, 2 Toby Moore, 1 Sam Colwell, Players' Player Troy Tape

FIRST GRADE

Both teams started the game feeling each other out with some strong running and solid defence. Walcha turned the ball over and were the first team to go on the attack. Walcha then conceded a couple of penalties and Moree were hot on the attack. Some good passing saw Moree get on the outside of Walcha breaking into the back field and backing up to score the first try of the game. Walcha 0 Moree 7. Both teams continued to battle in the middle of the park not giving up any territory. Walcha was holding onto the ball very well showing great patience and control. This patience was rewarded with a clean line break from the backs to put the Rams hot on the attack. Our forwards then went to work with some tight rugby. Strong carries from Ritchie "the coach" Hunt and Archie "sheep man" Lawrence put Walcha in great position. Sione "big Ulu" Kamoto then carried the ball over the line reaching out to score, only to have a Moree player illegally kick the ball from his hands resulting in a penalty try to Walcha. Walcha 7 Moree 7.

Walcha regained the following kick off running a number of phases before setting up for their exit. The exiting kick was hit sweetly and the Moree winger

knocked the ball on inside their own half giving Walcha another chance to attack. The forwards won the resulting scrum and the backs put together a seamless set play which saw Dom "skate park rat" Bower scurry through the line and offload to Patty "the ugly keen" Keen who scored under the post. Walcha 14 Moree 7.



Walcha had their tails up and were starting to show some dominance around the park getting in behind the Moree defensive line and making metres up the field. Once again Walcha found themselves attacking close to the Moree line after a strong run from Sam "just carry" Lomax. The forwards again went to work in close sucking in the Moree defence. The ball was then spun out to the backs on the blindside which saw two outrageous passes from Patty "the ugly keen" Keen and Dom "skate park rat" Bower who both caught the ball low and were forced to tunnel the ball through their legs to leave the Rams with an easy run in for a try close to the line. Walcha 21 Moree 7. Walcha took this lead into the second half having played a solid first half of rugby.

Some missed tackles and ill discipline from the Rams allowed the Moree side to score a try early in the half. Walcha 21 Moree 14. Moree continued to dominate the possession and field position throwing everything at the Walcha defence. Some relentless tackling from Josh "Mr Moll" Moloney and Joe "dungeon master" Makeham managed to repel the Moree attack as Walcha were forced to defend for a long period of time. Eventually the Walcha defence succumbed to the continuous pressure and Moree scored another try with 15 minutes to play, setting up a grandstand finish. Walcha 21 Moree 19.

Both teams were battling for dominance in the last quarter of the match not willing to give up an inch. Some excellent goal line defence from Moree saw them repel a Walcha attack of 15+ phases. Bastien "French guy" Ynard was running strong providing a good platform for the Rams. Wally "slippery Somerton sheep breeder" Davidson looked at home in the centres enjoying both the attack and defence. As the game wore on some missed tackles and ill discipline from Walcha gave Moree a penalty right in front of the post, which they converted to take the lead with 5 minutes remaining. Walcha 21 Moree 22. The Rams were forced to dig deep and put in a huge effort for the last 5 minutes. Moree were next to flinch giving away a penalty close to their own line which the Rams decided to kick at goal. The difficult kick from out near the touch line sailed over and Walcha retook the lead with 2 minutes to go. Walcha 24 Moree 22.

Walcha regained the kickoff and set up for their exit forcing Moree deep into their own 22, leaving them with no option but to kick for touch. Walcha won the line out and got to work, rolling the ball up the field running the clock down. Walcha held the ball for over 10 phases denying the Moree defence a chance at the ball. Joel "joog baby" Ballon was excellent, carrying the ball strongly and leading the forward pack around the ground. Matty "lil tis" Tisdell had another strong game making no errors and marshalling the team. In the end Walcha managed to hang onto the lead and finish the game. Walcha 24 Moree 22.

Next week sees the Rams head to Qurindi in what is shaping up to be an excellent test.

3 Sione Kamoto, 2 Patty Keen, 1 Ed Churchill, Players' Player Joel Ballon

Major Sponsors



Red: Davidson Cameron & Co, Karori Pastoral Co, Marchant Bros

White: Peter McNeill, Agfix Mechanical P/L, Branga Plains Pastoral Co, S.N. Nivison, TA Fields Estates P/L, Nurtien Boultons, Nerstane Merino Stud, MTA Travel

Club: Merlanie Pastoral Co, Ben Nevis Angus, Emu Creek, Peter Norbury Motors, Pitt Sons

Rams Donors: Jemalong Wool, Maryland White Suffolk, Old Woombi Poll Dorset, Productive Pasture Solutions, Ross & Debbie Keen, Cameron & Rachel Greig

Busy time at St Patrick's School



*Years 5-6
students
enjoying
themselves
at the GRIP
Leadership
Day.*

From Dallas Hyatt, Principal

Over the next fortnight all members of the St Patrick's Primary Learning Community will be involved with a number of activities which will feature in future editions of *The Advocate*. To acknowledge all of the great work that our mothers and grandmothers do, the Parents and Friends Committee hosted a Mother's Day Breakfast last Friday. Our mothers and grandmothers were treated with croissants, fresh fruit salad and a wide range of refreshments. Our special guests had the opportunity to have a back massage as well as having their nails done, which was very popular with some of our students! Also, all of our guests were encouraged to pose for a family portrait in the photo booth. This event wouldn't have been a success without the work of Amy Clark and her wonderful group of helpers. Well done ladies and we hope all of you were pampered on Mother's Day.

On Monday all of our Years 5 and 6 students participated in the GRIP Leadership Conference at the Ex Services Club in Armidale. This day focused on providing our senior students with the opportunity to develop and implement various leadership skills, that they can use now and throughout their lives. Our students participated in a number of workshops and they were encouraged to meet and work with other students throughout the region. All of the students had a great day and again thank you to Mrs Davey for supervising the students on the day as well as all of the parents who organised their children to be at school to catch the bus early on Monday morning.

A barking success

Walcha's dog handlers have had a successful few months winning and placing all over NSW in three sheep, yard and cattle trials.

Over the weekend the New England Cattle and Yard Dog Championships were held in Armidale which brought competitors from all over NSW. Again our local handlers found themselves amongst the finalists in many of the events.

From the cattle trial arena Nathan Brown placed 2nd in the Novice with Buckol Megan, Sandy Carlon 4th in the Novice with Balydine Ivy, Dan Mathews was a finalist in the Open cattle with Faye and Tony Overton was a finalist in the Maiden, Novice and Open cattle trial.

In the sheep yard trial arena Nathan Brown won the Encouragement with Gwydir Minnie, James (Ching) Sweeney was a finalist in the Improver yard with Phil, Tony Overton placed 4th in the Maiden with Gwydir Wilga and 2nd Novice with Gwydir Cougar.

Tony also won equal highest aggregate Novice score in the cattle and yard combined.

The Open Yard Championships was taken out by Justine Tombs from Armidale and the Cattle Open Champion was Luke Heagney and Bruce from Armitage and Buckley in Armidale.

Pitt Son's REAL ESTATE
& LIVESTOCK

FOR LATEST
UPDATES



6777 2000 | www.pittsons.com.au

Top Location Double Block



- Three bedrooms
- Kitchen with dishwasher
- Dining room
- Lounge room
- Very spacious living room on Northern side catching sun for winter
- New pure wool carpet throughout
- Entire inside freshly painted
- All new day, night blinds
- Reverse cycle air
- New down lights power points
- Two lock up garages
- Covered BBQ area



\$470,000 o.n.o

AuctionsPlus

Friday May 19

A/C Kambala Partnership

16 Outstanding PTIC Angus Heifers EU
PTIC to Baringa & Glenavon LBW Angus Bulls calving
for a very short 3 week window.

A/C RP & JA Gates

27 Angus Heifers
PTIC to Top Indexing Wagyu Bulls to Calve August/Sept
40 Angus Heifers
PTIC to Top Indexing Wagyu Bulls to Calve August/Sept

A/C Oakburn Pastoral Co

31 Hereford Heifers
PTIC to LBW Booroomooka Angus Bulls

Contact Andrew 0428 667 402
or Sam 0428 667 404

Boyd and Little Cricketers of the Season



Daniel Boyd and Sinclair Little

By AJ Cross

The Walcha/Urala Cricket Club held their annual presentations at the Commercial Hotel last Saturday afternoon where allrounders Daniel Boyd and Sinclair Little were announced as dual E R Brazel Memorial 'Player of the Season' after they polled 18 points each. Two points behind them was Jay Grills 16 followed by Josh McFarland 14, Nick Endacott 13, Ed Blomfield 12, Randel Grewal and Peter Mooney 11, Shannon Rafferty 9 and Matt Harper 7.

Trophies in Second Grade went to

T/20 Batting Aggregate	Daniel Boyd 152 runs
T/20 Batting Average	Daniel Boyd 30.4 runs
T/20 Bowling Aggregate	Jay Grills 10 wickets
T/20 Bowling Average	Sinclair Little 8 wickets at 7.75

One Day Batting Aggregate	Ed Blomfield 441 runs
One Day Batting Average	Ed Blomfield 49.0
One Day Bowling Aggregate	Sinclair Little 23 wickets
One Day Bowling Average	Sinclair Little 7.52
Player of the Final Series	Jay Grills

Trophies in Third Grade went to

T/20 Batting Aggregate	Josh McFarland 130 runs
T/20 Batting Average	Nick Endacott 78.0
T/20 Bowling Aggregate	Josh McFarland 5 wickets
T/20 Bowling Average	Ben Hamilton 8.0

One Day Batting Aggregate	Nick Endacott 274 runs
One Day Batting Average	Nick Endacott 47.67
One Day Bowling Aggregate	Peter Mooney 13 wickets
One Day Bowling Average	Peter Mooney 8.08
Player of the Final Series	Nick Endacott

Under 21's

Under 21's Batting	Cooper Boyd 86 runs at 14.66
Under 21's Bowling	Sinclair Little 31 wickets at 7.58

Centuries

Ed Blomfield	119 v/s TAS
Ed Blomfield	146 v/s Ex Services
Nick Endacott	103 v/s Guyra

Five wicket hauls

Sinclair Little	6/17 v/s Hillgrove
Jay Grills	5/6 v/s Guyra
Randel Grewal	5/8 v/s Hillgrove
Peter Mooney	5/13 v/s Guyra

what's the goss

with AJ Cross

Congratulations to Walcha/Urala Jillaroos player Kirra-Lee Murphy on her selection in the Greater Western Girls Rugby League Squad to compete in the State Trials at Wollongong over three days, 22nd to 24th May after she caught the selectors eye with good performances at Gilgandra recently. Best of luck Kirra.

...

Calling all male basketballers. Organiser Amanda Scott reports the association has enough players nominated for three teams but would like a few more so a four team competition can be played. Any reliable blokes interested in having a run please contact 'Scotty' or indicate via the Walcha Basketball Facebook page.

...

Well done to the 41 athletes who represented Walcha Central School at the Armidale Zone Cross Country held at the UNE last Friday. Congratulations to Veja-Lee Petuha on finishing second in her 10 years girls event and to Sophie Mulligan on her fourth place in the same race. Best of luck when you go to the next level at Coolah in the near future.

...

Three boys Ethan Olrich 7th in the Boys 11 years, Kix Brown 8th in the boys 8/9 years and Ben Lockyer 9th in the Boys 10 years all finished inside the top 10 positions in their events and should be in the Reserves list for Coolah in case some of the runners above them aren't available.

...

Well done to the four athletes who represented Woolbrook at the same Cross Country. Arley Olsen finished 5th, Levi Denny 8th, Zoie Denny 9th and Alyssa Brown 25th in their respective event. Good on ya guys.

...

All footy tipsters should be aware that there is a mistake on most cards used where the Broncos are listed to play twice this weekend. Brisbane do play the Panthers on Thursday night and not the Storm on Saturday as listed which should have been the Dolphins.

...

Dragons supporter (at times) Stephen 'Normie' Goodwin became the first Apsley Arms tipster to correctly select a full card this season last weekend and in doing so collected a couple of bonus points to become equal leader with Lachlan Moran.

...

Around at the Bowling Club leader Darrell 'Bikie' Brazel 'Picked the Card' to increase his lead while at least half a dozen tipsters correctly selected all winning teams. At the Newie Charlotte Lyon has joined Dal Evans on top of the leader board where as my favourite son Ben was pretty happy with himself after he collected maximum points along with three other punters. At Apsley Motors 10 tipsters 'Picked the Card' including leader TH_2023.

...

Heard a whisper that niece Kimberley Lisle had a bit of trouble with footwear selection during recent times. By all accounts when Kim arrived at Junior Rugby training fellow parent Chris Broadbent noticed Kimberley was wearing odd shoes which she was. At least you had another pair at home practically identical Kim.

...

Earlier in the week Gary Brennan was enjoying a late lunch and a frothy refreshment when he became a bit stressed after he was unable to find his credit card despite turning his wallet inside out. There was plenty of relief when fellow patron D.G. Clare pointed out his red card was sitting in disguise on top of one of the red 'X's' in the XXXX drip tray.

...

Congratulations to local Cricketer Daniel Boyd and Sinclair Little on being named E.R. Brazel Memorial Players of the year when the association held their annual presentations at the Commercial Hotel last Saturday afternoon. Despite both 2nd and 3rd Grades winning their respective Armidale and District Premiership only a handful of players attended the prize giving. Sad really.

...



Suggested Reading

The great American humourist and author Mark Twain once said "If you don't read newspapers you are ill-informed, if you do read newspapers then you will be misinformed."

The media has been irresponsible over the wind farms/solar panels and other forms of renewable energy. Our taxpayer funded ABC has been particularly negligent in following the journalistic code by presenting fantasy and not facts.

To help Walcha locals and others who will be affected by the construction of wind towers, may I suggest reading Professor Ian Plimer's latest book, *Green Murder*. Properly informed decisions will then be possible.

It is available on-line from Booktopia.

The meeting on Thursday night, 11th May, where Walcha Energy were meant to answer questions from concerned citizens of the Walcha Community about the construction of wind generators in and around the Walcha district, was an insult to the Walcha community. They obviously think that we are a bunch of hayseeds that should be kept in the dark and fed on B.S.

More and more citizens are starting to realise that our scenic rural landscape will be trashed by these inefficient monstrosities.

Walcha Energy is obviously hell bent on hiding facts. The lack of willingness to openly discuss the project suggests that we are dealing with a ruthless overseas corporation, propped up by subsidies from the Australian Government. This corporation cares not one iota for our beautiful environment.

Adrian Pollard, Moona

advocate sport



Ladies Golf

Wednesday saw a stroke, putting, monthly mug and the third medal round, along with the Mabel McKenzie Brooch playing for Cheryl McDonald's trophy.

Again, this week there were some excellent scores. Simone Sweeney was the winner with 67 stableford points, closely followed by Vicki Heffernan with 68 and Jenny Lisle with 69. NTP on 3 was Alison Cameron and the second shot on 18 went to Jenny Lisle. The putting was won by Vicki Heffernan with a mere 22 putts.

The monthly mugs were won by Simone Sweeney, Division 1 with her 67. Division 2 was won by Lorraine Walshe with 71 and Division 3 by Robyn Salt also with 71.

Today we are playing a Graham Betts stableford qualifier and the trophy is being supplied by Prue Morgan.

Rugby League

Walcha/Uralla were defeated by Narwan when they played their Group 19 matches at Woodville Oval Uralla last Friday. In the main game Narwan ran in four converted tries in the first half to hold a 24 – 0 lead when oranges were taken, to leave the Tigeroos behind the eight ball going into the second session.

Seven minutes into the second half, centre Josh Dailey opened the scoring for the homeside before fullback Shuaib Rhodes-Swain raised the flags to reduce the defeat to 24 – 6.

The visitors responded with another converted try before finalising the score line at 36 – 6 midway through the second stanza, while Tigeroos bench player Michael Moran was spending time in the sin bin.

Group B & F points: 3 Jaiden French (N), 2 Jack Doran (W/U), 1 Henry Strong (N). Club B & F points: 3 Kieren Siff and Players' Player, 2 Jack Doran, 1 Brody Dexter.

A minutes silence was held before the match for staunch Clubman Neil Vincent Doran, better known to everyone as 'Grubby', grandfather of Tigeroos utility play Jack Doran. Current Point Score: Guyra 10 points, Boomerangs and Glen Innes 8, Narwan and Inverell 6, Bingara and Tigeroos 4, Tingha and Armidale 2 and Warialda 0 points.

Jillaroos

The Walcha/Uralla Jillaroos suffered their first defeat of the 2023 season when they went down to Narwan 30 – 18 after leading 12 – 8 at half time.

Nine minutes had lapsed on the clock when Joscisca Matapakia crossed for the opening try, converted by Hannah Byrne to take the homeside to an early 6 – 0 lead. Midway through the first session Taneika Landsborough broke through the visitors defence before racing 70 metres to score under the posts, leaving Matapakia an easy conversion attempt which she was successful with.

Narwan, with whom former Jillaroos player Anika McKenna now plays, scored a converted try three minutes before the main break and then right on half time kicked a penalty goal to leave the score at 12 – 8 as the hooter sounded.

The visitors hit the front 11 – 12 just after the break with a converted try before Matapakia found touch from the kick-off to regain possession for the Jillaroos, who immediately took advantage through the second try to Landsborough.

When Matapakia raised the flags the Jillaroos lead 18 – 14, but that was all she wrote for the homeside. The visitors scored three more further tries to finalise the score 30 – 18. Group B & F: 3 Tyshayla Blair, 2 Taneika Landsborough, 1 Hayley Ford. Club B & F: 3 Taneika Landsborough, 2 Finlai Bird, 1 Natasha Foster. Players' Player Jojo Matapakia. Points Score: Tingha 10 points, Glen Innes and Jillaroos 7, Warialda 6, Bingara and Inverell 5, Narwan and Guyra 4, Boomerangs 2 and Armidale 0 points.

This Saturday the Tigeroos and Jillaroos travel to Warialda to play their Round 6 fixtures.

Tennis

Round 2 of the Eskimo Comp was played out on Tuesday 9 May. Michael Lockyer was the only max scorer on the night with 18 from a possible 18. Well done Michael. Both Dennis Wall and Todd Whillock went close with 17 from a possible 18. Good luck to all braving the cold this week.

The next Club meeting will be held on Monday 10 July at 6.30pm. All members are welcome to attend.

See you all at the net soon.

Bowls

Dads Army: Ten players lined up for bowls on Thursday afternoon and were graded into a game of pairs and a game of triples. Barry Kliendienst and John Watts had to play an extra end against Brian Goodwin and Warwick Hogan to give them the win 18 – 17.

Mark Hogan, John McCormack and Gary Brennan won the chooks after they defeated Noel Goodwin, Geoff Salt and Veronica 14 – 13, after leading 13 – 2 at the halfway point. Brian Goodwin won the raffle.

Ladies Bowls

Last Thursday Esther Hunt and Sari Andrews played in a brilliant game against Debbie Richards and Carmel Ryan in the semi-finals of the four bowl pairs winning 18 – 14. It was very close all the way through and the four girls played exceptionally well. Congratulations Esther and Sari who now play Janice Rizzi and Jan Cross in the finals on Friday. Pat Laurie, Janice Rizzi and Lyn Burnell played a game of consistency with the scores being 18, 28, 37 respectively. Last Wednesday Janice, Jan, Wendy, Lyn, Carmel and Esther played in the Pam Westbury Memorial Trophy in Uralla. Congratulations to Janice, Carmel and Esther on winning spiders.

There is a flyer on the wall regarding the Gloucester Ladies Gala Day on 7 June. Entries close 24 May.

Tomorrow there is social bowls followed by the monthly meeting at 1.00pm. President's Day will be finalised.

At the 19th

Compared to previous years a very modest field of 14 players teed off in the 2023 Men's Foursomes Championships last Sunday. Club Handicapper Don Brooks and multiple Club Champion Simeon Cross combined to win the scratch section of the event after they carded a seven over par 77. Nett Winners were Michael Stackman and Drew Bird on 69 nett, while sweepstakes went to Club President Allan Green and Bill Duncan 71 ½, Tim and Isaac Stackman 72, Club Captain Will Brennan and Wayne Brennan 72 ½.

There were no NTPs on after last Sunday because the Captain apparently had too many things on his mind and forgot to send them out ... not that the Sharpest Shooters Pins are a regular feature on a routine basis every week.

Last Saturday 'Birthday Boy' and competition organiser John McCormack won the weekly 9 hole event after racking up 19 stableford points. Runner-up was Vicki Heffernan on 17 points who also took out the NTP on 3.

This Sunday is a Stroke Medal round for a prize supplied by Lachie Fletcher while the final round of the New England Veterans Pennants Competition was scheduled for Armidale yesterday Tuesday 16 May.

Progressive Points Score into the final round: Guyra 954, Walcha 903, Glen Innes 877, Uralla 839 and Armidale 825.



Death and Funeral Notice

TICKLE; Denise Elizabeth

6th May 2023

Of 'Frog Hollow' Lagoon Street, Walcha.

Dearly loved wife of Philip (Dec). Loving mother & mother-in-law of Karen & Wayne Boyd and Nicole & Todd Jones. Loved grandmother of Maddison, Thomas, Dominic, Daniel, Charlie and great-grandmother of Sophie & Hugo. Loved sister, sister-in-law, aunt and great aunt of her family.

Aged 72 years

Funeral Service to be held at Piddington's Funeral Home, Uralla Road Armidale, Friday 19 May 2023 commencing at 12 noon.

Piddington's AFDA 6772 2288

Meetings

Woolbrook RFS AGM, 20 May 10.00am. Woolbrook AIF Hall. All are welcome.

Walcha Support Group Inc, Thursday 25 May, 1.00pm WCCC Rooms Middle Street. All are welcome.

For Sale

Laver pullets. All breeds. 20 wks. Delivered Friday 2/6/23. Phone Jim 0428 194 105.

DJ'S Firewood – Best wood in the district. Bulk only – minimum 6m³, maximum 10m³. Deliver Walcha Saturday OR pickup from Niangala Saturday 1.00 – 4.00pm. Phone 0427 335 631 or 6769 2395.

One Male Collie X pup – \$100. Phone Glenn 0475 773 987.

Shoreline Oysters at Farmers' Markets this Saturday 20 May. Phone 0447 520 604.

Raffle Results

Walcha Hospital Auxiliary Mothers Day stall: 1st Allan Holmes, 2nd Kathy Innes, 3rd Audi Dunn and 4th Jenny Wright.

Public Notices

Walcha T&C Street Stall

Saturday 20 May from 8:00am

Prizes include:

- Cross Bros Butchery \$50 voucher
- Firewood donated by Laura and John
- Penwood Creations Photography winter mini session
- The Fruit Shop hamper
- Carter Family – accommodation in Port Macquarie

Public Notices *cont.*

Walcha Council Regional Meetings



Residents are advised that Council will again be conducting a number of meetings throughout our Council area. An open invitation is extended to all interested residents to meet with your Council to raise questions, concerns and be informed of Council operations. Meeting details are included below. Your Council looks forward to seeing you there.

Monday, 22 May 2023

10:00am Europambela's Shearers Quarters
2:00pm Ingleba Hall
5:00pm Woolbrook Sport & Rec Ground

Tuesday 23 May 2023

9:00am Yarrowitch Hall.
11:30am "Brockley Park" Shed
2:30pm Nowendoc Hall

Phillip Hood, Interim General Manager Walcha Council,
PO Box 2, Walcha NSW

DR GENEVIEVE FREER
Phone 6777 2068 0429 668 583

Squash Club Winter comp starting Tuesday 23 May. Any interested players please contact James on 0427 049 378.

Positions Vacant

NSW National Parks and Wildlife



Office Cleaner needed: Twice a week cleaning at 188W North Street. Must have ABN and Insurances.

For More Information contact:
Cecilia Casey on 02 6777 4720



SENIOR STAFF REQUIRED

Casual positions available.
Flexible work hours, up to 30 hours per week. May lead to permanent position.
Previous applicants need not apply.
Application forms available from
Carlos IGA Walcha office.



JUNIOR STAFF REQUIRED

Weekend and after school positions available. Must be 14 years old to apply.
Application forms available from
Carlos IGA Walcha office.

Position Vacant *cont.*

Preschool Educator – Term Position



Walcha Preschool is looking for a Preschool Educator for the period 17 July 2023 to 12 April 2024. This is a relief position offering a minimum of 25 hours per week. You will assist Council in developing and delivering educational programs using the Walcha Preschool Philosophy, the Early Years Learning framework and the National Quality Standards as the foundation for daily practice.

You will be working as a valued member within a friendly, supportive and encouraging environment, and your responsibilities and actions will reflect Walcha Council's core values of teamwork, respect, customer first focus and willingness to carry out assigned tasks.

Council is an EEO employer and offers a smoke free workplace. For more information, and to apply, visit Council's website – Positions Vacant Section. <https://bit.ly/3A30YDc>

Applications close Monday 22 May 2023.

Small Council, Big Opportunities!

Phillip Hood, Interim General Manager Walcha Council,
PO Box 2, Walcha NSW

Service NSW/Customer Service Officer



Do you love helping people?

If so Walcha Council has a great opportunity for you. We are looking for an enthusiastic "people person" to assist members of the public, Walcha Council Ratepayers and Service NSW customers at Council's administration office. Your strong computer and communications skills and ability to work well with others, plus your attention to detail and willingness to learn and follow instructions will be an asset to Council and the Walcha region. Service NSW training will be provided.

You will be working as a valued member within a friendly, supportive and encouraging environment, and your responsibilities and actions will reflect Walcha Council's core values of teamwork, respect, customer first focus and willingness to carry out assigned tasks.

Council is an EEO employer and offers a smoke free workplace. For more information, and to apply, visit Council's website – Positions Vacant Section. <https://bit.ly/3A30YDc>

Applications close Monday 29 May 2023.

Small Council, Big Opportunities!

Phillip Hood, Interim General Manager Walcha Council,
PO Box 2, Walcha NSW



STACES FAST FREIGHT

Delivering
Tamworth – Walcha
0429 608 409



CHIROPRACTOR

K Samantha Goor

B.Sc. Anatomy (NSW) M Chiroprac (Macq)
Tuesday & Friday from 9.00am
6777 1340

SPLITZAIR WALCHA

- AIR CONDITIONING & ELECTRICAL
- Domestic & Commercial
- Split system specialists



Dave 0438 007 275 Lic. 182154c

ENGINEERING

John Wall

- Stock floats • Feeders • Sheep & cattle yards • Steel framed sheds & mobile welding

6778 0588 • 0428 778 087

Tree lopping
Tree removal
Truck & chipper
Bobcat
Post hole digger
Trencher
Woolshed cleaning
Stockyard cleaning



Scott Kermode
0427 100 889

TREETOP
services

treetopservices@bigpond.com

STORAGE CENTRE WALCHA

20' Containers available for rent \$35 pw + GST
Secure Undercover parking for cars,
vans etc \$15 pw + GST

ANGUS 0427 787 332



CURTIS

POWERS & SMALL ENGINES

**ALL
TYPES**

- Mowers • Ride-ons
- Pumps • Chainsaws
- Whipper snippers
- Chain sharpening
- Bar dressing

SELLING New 30 & 40 Tonne Petrol Hydraulic
WOOD SPLITTERS from \$3,100 delivered
• Chainsaw chain •

JAMES – 0488 020 762 (7 Days)

TRU BLU RECYCLING

CASH
FOR
CARS & TRUCKS

ANY CONDITION

TRUSTED LOCAL OPERATOR
FOR OVER 15 YEARS
Mark 0412 310 650

Nick Moore

PLUMBING & EXCAVATION SERVICES

WALCHA & SURROUNDING AREAS



Highly qualified and
experienced plumber
All aspects of Plumbing
and Gas Fitting
Wood heater installation
Roofing and Guttering
Gold Licence No 59555C

Nick 0418 691 306

nickmoore203@yahoo.com.au

Katy 0422 034 660

A G W RURAL CONTRACTING

GPS Equipped boom spraying

Andrew Wauch 0427 549 748

JK PACIFIC TILING

WALL & FLOOR TILING
WATERPROOFING

0419 972 129

Email: jake.kerby@hotmail.com
ABN: 76781656814 Licence no: 335540c

M L MASSAGE THERAPY

Remedial and Sport Massage

MADDIE LANCE

TUES TO FRI 9AM - 6:30PM

0432 635 994



MOBILE
TREATMENTS
AVAILABLE

GRAPHIC DESIGN

CORPORATE IDENTITY & LOGO DESIGN

BRAND GUIDELINES • SIGNS • BOOKS & MAGAZINES
ANNUAL REPORTS • CATALOGUES • BUSINESS CARDS

0418 281 489 • OSCARWAUGH@GMAIL.COM



Andrew: 0427 549 748

Toni: 0421 972 354

SELF STORAGE

NORTH STREET – WALCHA

VARIOUS SIZED SHEDS

SECURITY FENCED

67773899 0428 653 307



PATRICK STACE – WALCHA
Mob. 0428 780 077 Ph. 6778 0077

A pure taste with little waste!
PURE RAIN TANK CLEANERS



0428 320 985

James Patterson-Kane

DISCLAIMER LETTERS TO THE EDITOR are submitted on the condition that The Walcha Telecottage as the publisher of The Apsley Advocate may edit and has the right to, and license third parties to reproduce in electronic form and communicate these letters. They are published at the discretion of the Editor and Board. The Apsley Advocate is printed by The Walcha Telecottage, PO Box 116 Walcha NSW 2354. Phone 6777 1111 Fax 6777 1112. The Walcha Technology Co Operative Limited, the Editor and Staff of this Newspaper have published any article here-in in good faith and bear no responsibility in respect to the accuracy of the information contained in such article. Any person or persons publishing material in this Newspaper do so in the knowledge that they shall personally accept any responsibility for the accuracy and other correctness of such articles and also accept full responsibility for the legal consequences if it be found that the article contains any inaccuracies in the contents of any such articles. **DEADLINE MONDAY 4.30PM** Editor: Anthea Macpherson. Advertising and Sport: Rosalie Gibson, Megan Scrivener, Emily Scrivener and Joscisca Matapakia.

Marchant Est. 2000 BROS.



A FULL RANGE OF AFFORDABLE TRANSPORT & EARTHMOVING
COMMERCIAL WATER CARTING
 Dam construction/maintenance, stick raking, road building,
 site prep, pipe laying and all timber work.

Check out our website for the full range of machinery,
 attachments and services available

**FIREWOOD ORDERS CURRENTLY CLOSED
 UNTIL WE CATCH UP ON ORDERS**

ORGANIC, LOW SMOKE, HIGH HEAT.
 Beat the climate change, order now

Earthmoving and Heavy Haulage Transport
Jason 0427 490 487
 02 6777 2024 marchantbros@bigpond.com
 www.marchantbros.com.au

WALCHA BOWLING & RECREATION CLUB

Mon – Wed 4.00pm – Close

Thursday 18 12.00pm – Close

Ladies bowls 9.30am for 10.00am start
 Social bowls 1.00pm

Friday 19 2.00pm – Close

2.00pm Bingo

6.00pm Bistro

- Chessy meat balls & spaghetti
- Garlic butter seafood marinara
- Chicken cutlets
- Normal menu available, takeaway and delicious dessert.

6.00pm Tickets available for raffles –
 meat and veg trays

6.00pm Free Bingo

8.00pm Raffles drawn & Members Draw

Saturday 20 11.00am – Close

6:00pm Bistro

2-4pm TOSS THE BOSS

Sunday 21 11.00am – Close

12.00pm Bistro open

Children U/10 kids meal free with an
 adult order

12.00pm Meat, fruit and veg raffles
 12-2pm HAPPY HOUR

**MEMBERS
DRAW
\$450**

YOU MUST BE A MEMBER FOR
 2023/2024 TO BE ELIGIBLE TO WIN

**TRY TOM'S
NEW
SHIMMER
COCKTAILS**

Social Bowls

Available during opening hours,
 see staff regarding bowls
 equipment

Do you live in Walcha Shire? If so you **MUST** be a member to enter the Club
Social Membership \$15 – Full Membership \$105. PHONE 6777 2077

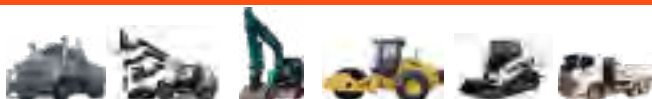
FOR ALL YOUR EARTHWORKS
 TRANSPORT AND ELECTRICAL NEEDS

ALL ASPECTS OF RURAL, COMMERCIAL & CIVIL WORKS



- Freight & Transport • Machinery Float • Stick Raking
- Road construction and maintenance • Trenching
- General Earthworks • Drilling • Mulching
- Dam maintenance and construction
- Erosion Control • Site Preparation • Electrical Works

Ian Notley 04188 29188 • Mark Notley 0422 637 686
 www.eteservices.com.au



LINMAC ENGINEERING

IF YOU NEED IT – We make it!

CUSTOM TRAYS AND TIPPERS



- Customer consultations to make sure we build to YOUR individual specifications
- Sandblasted and powdercoated
- Toolboxes, timber floors, tipper trays, water tanks ... whatever you need!

AUTHORISED HUSQVARNA DEALER



**Check out our new facebook page:
 Linmac Engineering Walcha**

211N Pakington Street WALCHA
 Phone 6777 2822 Email enquiries@linmacengineering.com.au