

THE APSLEY Advocate

CIRCULATION 1810 P 02 6777 1111 F 02 6777 1112 wtc@walchatelecottage.com.au walchatelecottage.com.au

03 May 2023

EST. 1865
COMMERCIAL
HOTEL
WALCHA NSW

OPEN

7 days week from midday
For Real Pub Food

LUNCH + DINNER
Tuesday – Sunday

MONSTER RAFFLE

Friday nights
Drawn 7.30pm

Proud sponsors of Walcha
Rugby, Walcha Cricket, Walcha
Jockey Club & Walcha Tennis
DONATING TO LOCAL CHARITIES

COMMERCIAL LANE
PHONE 6777 2667



AuctionsPlus

Friday 5 May

Lagoona Downs Herd Dispersal

110 Angus PTIC Cows
52 Angus Cows and Calves
24 Angus Cows and Calves
30 Angus Heifers and Calves
13 PTIC Angus Heifers
and Calves
117 Angus Weaners

SK & A Rizzi

10 Angus Weaner Heifers
Mat Larkings 0427 002 427

NT & DV Bazeley

11 Angus/Angus X Steers
12 Angus/Angus X Heifers
Miles Archdale 0428 660 326

Nutrien **Boulton's**

Derby St Walcha P 6777 2044

Locals win State Golf Championships



NSW Vets Scratch Champions Will Brennan and Margaret Davidson with VGA Councillor Peter Taylor



Nett Winners Simeon Cross and Donna Martin

By A.J. Cross

The 2023 NSW Veterans Mixed 4BBB Sandgreen Championships were held here at Walcha last weekend where a number of local members were successful. Winners of the 36 hole Nett event were Simeon Cross and Donna Martin with 93 Stableford points (47, 46) six points clear of runners up Don Brooks and Sue Partridge on 87 (44, 43).

Scratch winners were Will Brennan and Margaret Davidson 56 (29, 27) a couple of points ahead of Miles Archdale and Caroline Street 54 (32, 22).

Day 1 - 18 holes nett went to Wayne Brennan and former Walcha player Maree Townsend 46 points on countback from runners up Craig and Prue Morgan also on 46 points.

Day 1 Scratch to Peter York and Amanda Koopman 31 points whereas Day 2 Scratch was won by Armidale champion Charlie Murray and Lib Thompson 24.

Day 2 Nett was taken out by Reg Walls and Leonie Taylor 43 points from runners up former Walcha Road Policeman Greg Doolan and his wife Jeannie, 41 points.

Sharpest Shooters at the pins on Day 1 were Barry Hoad (3) Peter York (9) Alan Bransdon (16) and Lee Fletcher (18) while Day 2 Leonie Taylor (3) Jeannie Doolan (9) Wendy Jackson (16) D.A Locke (18).

Chief organiser Neil Dark would like to thank major sponsors Walcha Energy for their great support of the event and also mentioned Walcha will be the venue for the championships for the next two years with NSW Vets Vice President John Daley very impressed with the Walcha course to the point where a mention was made that it is the best Sandgreen layout he had played on.



Purchase Cydectin Platinum and go in the draw to **WIN** an Optiweigh system.

• Valued at \$19,250

One entry for every purchase of
Cydectin Platinum 5L, 7L or 10L
or three entries for purchase of a
Target Beef Productivity Pack.

WVS
WALCHA VETERINARY SUPPLIES

6 Aberbaldie Road Walcha • Phone 6777 2588 • www.wvs.com.au



OK EARTHMOVING

Specialising in road construction & maintenance

• Stickraking • Dam building • Erosion works



Bulldozers • Excavator • Tip-truck • Vibrating Roller

PH 6777 7430 FAX 6777 7448

PETER O'KEEFE: 0429 944 821

around the traps



By SIMON NEWTON

Winter is coming and with the extra coolness in the breeze this week I think it will be here to stick around. Looking at the forecast for the next 10 days it looks like our first solid frost might be here on the weekend and the daytime temperature will struggle to get to mid teens. It's hard to believe the tomatoes plants are still growing at this time of year and it can only be said just how kind of an April we have had with the weather. Going without a frost for the month has really allowed graziers to grow some much needed feed for winter and the livestock have done extremely well putting on a mile of weight with condition.

The National budget for 2023-24 is set to be announced on the 9 May and the early indications are that it will be in surplus compared to budget forecasts in October. The interesting part of this is that the Labor government is claiming that this is due to how they are running the country in such a short period. Only time will tell but I'm guessing the price of iron ore has everything to do with it considering it has lifted \$US45/t since October. Iron ore is the leading resource and energy commodity exported from Australia, exporting a whopping 874.144 metric ton mn in 2022. So as you can see an increase in value per ton makes Australia a whole lot of money which has helped deliver this potential surplus. I hope they spend it wisely and pay off some debt that has accumulated.

A huge issue facing the rural sector and especially our ability to process livestock is labour. I have spoken about this topic previously but as the government continues to welcome 7000 migrants into Australia per week to help with these shortages they have forgotten to consider how we will put a roof over their heads. The rental crisis is continuing to go from bad to worse with numerous people being unable to afford their rises in rent and the ability to find a suitable rental in their price range. It was stated yesterday that public housing in Victoria had 65,000 applications just last month for housing. We need skilled labour to enter the country but we also need to be able to accommodate these people who in rural communities would be easier to do, but they tend to stick to the metropolitan areas. There has to be some way the government can direct these migrants to country areas to help with the labour shortages out here.

Liddell Power Station was shut down last week and it will be an interesting space to watch as we enter the time of year when power usage is the greatest during the winter months. They have already warned people of supply shortfall and an increase in power costs with a further four power stations to go close by the end of the decade. Even with the advent of more green sourced energy, the problem is now they won't have the capacity to meet the consistent electricity generated as the coal fired power stations do, which is what Australia needs because we all like to have a light on in our homes, charge our phones that we can't live without and to stay warm.

The beef market looks to have found its feet with the market becoming more consistent over the last six weeks. The annual pre-winter sell off is happening with Tamworth yarding 2600 on Monday while Tuesday markets in both Gunnedah and Inverell yarded over 2200 cattle. Markets were quoted to be firm to slightly cheaper in places due to quality but the spike in cow prices we saw two weeks ago has gone. Heavy cows to slaughter topped at 271c/kg to average 258c/kg, best of the feeder steers made 414c/kg for Angus steers 469kg, while heifers to feed made 355c/kg weighing 371kg. The huge improvement has been the mutton market with mutton quoted to have been making over the \$5/kg dressed value in Tamworth on Monday. Reports are that China is starting to take large volumes of mutton which has been the main driver behind the improvement in this market. Heavy XB wethers topped at \$195 while Merino wethers made to \$156.



**BROOKLYN
QUARRY**

**LOCAL
DELIVERIES
AVAILABLE FOR
APRIL.**

**MAY- Limited
availability for
deliveries**

*Commercial Grade
Quarry materials.*

***Accredited and
registered Quarry.***

*40mm roadbase is
ideal for driveways,
stock yards and most
other areas.*

*We have a variety of products that
will suit your every need:
big rocks, small rocks,
rocks of any size!*

SCOTT@BROOKLYNQUARRY.COM.AU

0434 011 570

1643 OXLEY HWY, WALCHA RD. NSW
(BY APPOINTMENT ONLY)

WWW.BROOKLYNQUARRY.COM.AU

CommBank Walcha supports locals through community donation

Commonwealth Bank Walcha branch has donated \$500 to Quota Club of Walcha as part of a nationwide community donation program. Commonwealth Bank is committed to driving positive change within the communities it serves in order to make a difference locally and nationally.

As part of this, the bank has again pledged to donate a further \$350,000 Australia-wide to recognise those organisations that make a difference to the communities in which they operate. Each Commonwealth Bank branch and customer-facing team has been allocated \$500 to donate to causes important to their local community. Commonwealth Bank's Walcha branch team nominated two local community organisations as potential recipients for the donation. Between December and March, Walcha Branch customers, along with members of the local community, voted for which nominated community organisation they would like to support. The runner-up community organisation then has the opportunity to participate in the next round of the donation program.

"This is one small way we can get behind our local organisations who continue to do good work within the community. Having our customers and the local community share in the voting process was a wonderful way to collectively recognise Quota Club of Walcha," Anne Martin, Commonwealth Bank Walcha, Branch Manager said.

"Quota Club of Walcha makes such a valuable contribution to our community in supporting the Cancer Council and the Walcha Support Group, volunteering for Meals on Wheels, supporting the craft activities at the Elizabeth Cross Wing and contributing their time and support to various community events held in Walcha. We're thrilled to be able to help them continue their great work."



Quota Club Treasurer Julie Yates and President Chris Hamel accept the \$500 donation from Commonwealth Bank staff Anne Martin, Alice Gibson and Margaret Gardiner.

Quota Club President, Chris Hamel was extremely grateful for the donation, and said the Club will use the money to assist locally.



Stock and Property Watch

www.nutrienharcourts.com.au

Investor or Retiree



One bedroom unit overlooking Blair's Gully situated in a unit complex

- Unit is ready to go and is currently tenanted
- Tidy kitchen with electric stove
- Bathroom/laundry with shower/basin and toilet
- Open plan dining and lounge
- Bedroom with built-ins

\$157,000

Space to move



Fibro cottage in a peaceful area on 2023sqm block

- 3 bedrooms – one with built-in robe
- Open plan kitchen/dining with gas cooktop & oven. Walk in pantry
- Lounge with wood heater
- Bathroom – shower, toilet and basin
- Northerly facing sunroom
- Separate laundry with bath and second toilet
- Grandparent retreat with separate bedroom/entertaining room
- Fully fenced yard with several garden sheds for storage

Reduced to \$375,000




2024

St Patrick's Primary School Walcha Kindergarten Open Morning

Thursday 11th May 2023
9.30am - 11.00am
RSVP 67772328 or
spwadmin@arm.catholic.edu.au

Enrolling Now




Polding Winter Trials

Last Friday, Annie and Jessica (representing the Forbes-Wilcannia Diocese) and Angus represented St Patrick's Primary and the Armidale Diocese in both Girls and Boys Hockey at the Polding Winter Trial held at Tamworth.

Competing against the best hockey players from all of the Dioceses in the northern half of NSW, the students participated in a number of games against five other Dioceses in the hope that they gain selection to represent Polding at the NSWPSA Hockey Carnival. Unfortunately Angus missed out on gaining selection as he was up against some very stiff competition. As Jessica was representing the Forbes-Wilcannia Diocese as a goalkeeper, she wasn't eligible to gain selection in the Polding Girls Hockey Team. Hopefully, Jessica will be given the opportunity to represent the Armidale Diocese at these trials next year.



Jessica and Annie Patterson-Kane

However, congratulations go to Annie as she was selected to represent Polding at the NSWPSA Hockey Carnival at Tamworth commencing on Tuesday 30 May. We wish her the very best of luck as she will be competing against the best girls hockey players from the different educational sectors across New South Wales.

Rural Suicide is a real thing

Many of us will know someone who has taken their own life. In rural areas such as the New England suicide can happen at twice the rate of our urban counterparts. The good news is that there is something we can do about it.

This Thursday at the Walcha Bowling Club you are invited to come along and meet the CEO of 'AreYou Bugged Mate', and hear a strong, down-to-earth presentation on how you can lend a hand to a mate who's 'stuck'.

Topics covered will include *How to Reach Out* and *How to Help a Mate*. Coffee and light refreshments will be available. For all enquiries, please contact Nigel on 0427 840 467, or simply turn up on the day.

new england *family* support service



Celebrate Neighbourhood Centre Week

Join us at the Walcha Neighbourhood Centre at Unit 2, 27e Fitzroy Street Walcha next Monday 8 May for a free morning tea from 10:30am to 1.00pm to celebrate Neighbourhood Centre Week.

We look forward to seeing you there!





45ft flat top • 45ft single deck cattle float • 26mtr B Double
19mtr mini B Double • Low Loader available for hire



BRIAN Smith

TIMBER TRANSPORT

Call us for your large Transport needs

WALCHA
02 67772126

Bonnie Smith 0429 772 077
Brian Smith 0427 780 216

ANZAC DAY 2023

~ TUESDAY 25 APRIL ~



Linda Lockyer and Jan Cross



Coral Westfold, Vicki McIvor and Fay Hawkins



Walcha Central School students



Walcha March proceeds along Fitzroy Street



St Patrick's Primary School



Shirley McGuffog with grandson James McGuffog



Bernie Brady on Major Mitchell and Shanlee Duckett on Daisy



Lloyd Levingston and Peter McIvor



Official party entering the War Memorial



Ava, Poppy and Chris Betts

New England Online Multi Vendor Sale

5th May - 9th May 2023

Lot bookings close Monday 24th April

Online via  **AuctionsPlus™**

Antiques & Collectables, Household Items, Machinery, Tools, Parts & So Much More!

**FURTHER ENTRIES
INVITED**

For more information contact:

Nick Rogers 0429 382 108

Angus MacTavish 0427 165 120



Livestock & Rural Property Agents

www.dcco.com.au

thumbs



- 👉 To Neil Dark and his team for a wonderful golf weekend. Also to Lyn and Linda for the delicious meals.
- 👉 To all the helping hands that helped Gene to move house.
- 👉 To the kind person who let me know my drill was still on the bonnet of the car. Thank you from Bill.
- 👉 To the WSC senior students who ran alongside the little kids in Cross Country on Thursday. Hope you weren't all too tired to run your own race!
- 👉 To Brian Smith for his generous donation to the Walcha RSL Sub-branch for their raffle.
- 👉 To David Salter for his annual ANZAC Day flyover. It is very much appreciated.
- 👉 To the citizens of Walcha for coming out in force to support both our Dawn and Main ANZAC Day service.
- 👉 To Nena Hicks for her generous donation of art supplies to the community care art group. Thank you.
- 👉 Many thanks to Diana Lisle for her incredible organisation of our recent Garden Club trip to the Southern Highlands and to Stuart Bayley our bus driver for his patience and safe driving.
- 👉 To the senior rugby boys who came to referee at the Junior Rugby Carnival and saw that we were run off our feet in the canteen and got in and helped. Much appreciated.
- 👉 Massive Thumbs Up to Mountain Motors who came to our rescue as we started our holiday. After being towed back to town they had us back on the road within the hour.

Contributions will be received in person, by phone or email and must be accompanied by your name and contact details. They will be printed at the discretion of the editor.

Machinery Show helps local charities



From Walcha Machinery Group

Last Sunday the committee of Walcha Antique Machinery and Truck show (WAMATS) met with the Historical Society, Hospital Auxiliary and Westpac Rescue Helicopter volunteers to present them with donations of over \$2000 each.

The committee would like to thank everyone involved in the running of the show, with numerous people assisting in the organisation, as well as over the weekend.

A massive thank you to the Wauchope Yesteryear Truck and Machinery club, for helping to get the Show off the ground and assisting with its running. We are also extremely grateful to all of our sponsors and exhibitors who made their way to Walcha.

The show will be held again on the 17/18 February 2024 and we can't wait to see you all there again for a bigger and better show!

The Group are pictured above with the very grateful recipients from Walcha Historical Society, Hospital Auxiliary and Westpac Rescue Helicopter Service receiving their cheques.

Book this week for Wine Tasting Night

Time is running out to book your seat at the Wine Tasting Night next Friday 12 May.

For only \$10 you will be able to taste exclusive wines that aren't available on the shelves of liquor stores, as well as having nibbles, all at the Taphouse for a fun Friday night.

The evening is being organised as a fundraiser for the Walcha Historical Society at the Taphouse from 5pm to 7pm.

Bookings must be made by this Friday 5 May to ensure there are numbers to run the event.

To book contact Sean at the Taphouse on 0414 856 927.

Come along join in the fun and support the Walcha Historical Society. There will be a door prize and raffle on the night.



A successful Woolbrook Stampede

The Village of Woolbrook came alive with the running of the annual Stampede at the Sportsground recently. When the sun rose the weather was marginal, but with record entries the scene was set for a great day of drafting.

The day started with the Walcha Veterinary Supplies and Zoetis Maiden Campdraft which saw Zeb Pearce take out title with Cumburrah IMA Smart one. Next Event was the Brooklyn Park Novice Campdraft which saw Skye Sylvester and Sylvester Midnight Blue take the win.

Molly LeBroq and Double Up proved to be a successful combination in the Phoenix Partnership ladies Campdraft taking home the blue ribbon in what was the start of a successful day for Molly.

The Gerard Oversby (Westy's Farrier) Juvenile Campdraft was won by Sybella Miller riding Palmers Imprint and the Cody Woodward Contracting Junior Campdraft was won by Caitlin Emerton riding Skye. The sporting events got underway with around 20 kids and adults participating. Competition was fast and furious.

Stockman's Chop U/17 title had no winners. It was then onto the Vic Robson Memorial Stockman's Chop where there were record entries. Local Lad Jack Davidson came through for a stirring win showing the older competitors how it has done. Winner of the Cinch Highest Cut Out was won by Joel Mace.

The John Stanton Trophy which is awarded for Horsemanship, Encouragement and Sportsmanship was won by Joshua Bourke.

When it came to dog racing there were dogs arriving from all parts of the ground and this provided some great entertainment for the crowd. Jack and Maddie Davidson took out the small dog section and Jen Quera won the large dog section.

The day concluded with the Final of the Jim Lyons Agency Open Campdraft which saw local competitor and hard-working committee member Peter Grills come out on top by one point riding Traveller. Pete was last out and the pressure had been applied by Molly LeBroq who ran second on Double Up and third on Katie.

The committee would like to thank everyone who assisted on the day to make it a huge success. Cattle Donors Gary and Rhonda Olrich, Amanda Scott and Peter Grills. All the sponsors.



From left: Peter Grills. Open Final placegetters. Top inset: Jack Provost



From left: Vic Robson Memorial Stockman's Chop winner, Jack Davidson. Cinch Highest Cut Out, Joel Mace. Novice draft winner Skye Sylvester

Pitt Son's REAL ESTATE & LIVESTOCK

FOR LATEST
UPDATES



6777 2000 | www.pittsons.com.au



North Facing

- Two bedrooms
- Lounge room
- Gas heater
- Small tidy kitchen
- Laundry
- Lock-up garage



\$265,000



Food Service SHOP

A great opportunity awaits for the food enthusiast to open their very own fine dining, takeaway or restaurant in the main street of Walcha.

The building is fitted out with all the equipment required:

- Fridges
- Cooktops
- Range hoods
- Storage room
- Bathroom with a shower and toilet.
- Bain marie
- Ovens
- 2 x large cool rooms
- Office

If you're looking to start your own business without a large setup cost, this might be just what you are looking for!

\$380,000

Great news for the country that won't cost a cent



An open letter to Treasurer Jim Chalmers regarding the Budget

Dear Dr Chalmers,

There's a crisis in our country you can fix in your first budget, at no extra cost.

With the stroke of a pen you could help secure the future of critical regional news services, using money already allocated in the budget.

All you need to do is allocate a fairer percentage of the federal government's advertising budget to local and regional news services, rather than spending almost all of it with corporate capital city media and foreign-owned digital platforms (which don't produce any content or employ any journalists).

This can be achieved by simply adopting the Victorian Govt policy that mandates a weekly full page government advertisement in every regional and community paper.

Local and regional newspapers connect more than 80% of the country, but they get almost 0% of the government advertising spend.

In an era where false news spreads faster on social media than the truth does, trusted local news services reach more regional Australians than any other medium.

And unlike other media, every government dollar spent with a local newspaper is also an investment in regional journalism jobs.

This shouldn't be controversial.

A recent parliamentary inquiry recommended that a minimum of 20% of government print advertising should be placed with regional news services. A recent study conducted by Deakin University recommended the same thing. In fact, the Minister for Communications, Michelle Rowland, has been advocating for more regional newspaper advertising for many years.

We know there may be bigger budget issues, but this small policy change would be a simple and fair solution to a growing problem for regional Australia.

A policy that ensures weekly federal government advertising is placed in regional newspapers would be great news for the country.

And it won't cost you a cent.

Yours sincerely,

A handwritten signature in black ink, appearing to read "A Manuel".

Andrew Manuel
President
Country Press Australia

A handwritten signature in black ink, appearing to read "Tony Kendall".

Tony Kendall
Managing Director
Australian Community Media

WalchaEnergy will be hosting **2 COMMUNITY OPEN INFORMATION EVENINGS** to provide information about the proposed RubyHillsWind project.

Woolbrook Hall

10th May, 2023

4pm to 7pm

Walcha Showground





11TH May, 2023

4pm to 7pm

Open days will provide the opportunity to talk to our project team and learn more about the project and proposed plan.

Please note: more of these sessions will occur in the future, if you cannot make these dates please, call our office for an appointment so we can arrange a convenient time and location to meet.

Information on the day –

-  Updates on preliminary environmental assessments to accompany the Scoping Report by the relevant environmental consultants, including:
 - Landscape and Visual
 - Noise and Vibration
 - Biodiversity
 - Social
-  Current Project Layout Maps
-  Opportunity to be involved in surveys to inform environmental assessments
-  General project information, including indicative project timeline

Enquiries: www.rubyhillswind.com.au

FREE EVENT

THUNDERBOLT'S WOODLANDS

**RESTORING WOODLAND BIRD
AND KOALA HABITAT 'BIG RIDGE', URALLA**



IS YOUR WOODLAND FUNCTIONAL?
IS YOUR PROPERTY KOALA CONNECTED?
HOW TO BUILD HABITAT INTO YOUR
WHOLE FARM PLAN.

TOPICS INCLUDE:

- WOODLAND BIRDS AS INDICATOR SPECIES FOR THE HEALTH OF WOODLANDS
- FUNCTIONAL HABITAT FOR WOODLAND BIRDS
- THE IMPORTANCE OF CONNECTED HABITAT FOR KOALAS
- LANDHOLDER'S EXPERIENCES WITH SUCCESSFUL REVEGETATION AND HOSTING A SOLAR FARM
- HABITAT RESTORATION WITHIN A WHOLE OF FARM APPROACH
- THE 4 PS OF SUCCESSFUL REVEGETATION
- HEAR FROM DR ANDREW HUGGETT, CONSULTANT ORNITHOLOGIST, INSIGHT ECOLOGY, RICHARD MUNSIE AND GORDON WILLIAMS, EXPERIENCED LANDHOLDERS AND DES ANDERSEN, KOALA CONSERVATION OFFICER, SNEL

**8.30AM FOR A 9AM START - 3PM
FRIDAY 12TH MAY 2023**



MORNING
TEA & LUNCH
PROVIDED



**MORE INFORMATION
& REGISTRATION**

REGISTRATIONS ESSENTIAL AT STICKY TICKETS:

<https://www.stickytickets.com.au/EJX8C>

FOR MORE INFORMATION:

<https://snelandcare.org.au/event/thunderbolts-woodlands-restoring-woodland-bird-and-koala-habitat>

**SOUTHERN NEW ENGLAND
LANDCARE: 02 6772 9123**

RSVP BY WEDNESDAY 10TH MAY

This initiative has been made possible through the Re-connecting Thunderbolt Country for Threatened New England Woodland and Wetland Biodiversity Project funded by the NSW Environmental Trust and the Northern Tablelands Koala Partnership Program, hosted by Southern New England Landcare Ltd, and funded by the NSW Government.

Proudly funded by



Southern
New England
Landcare

TO BOOK, SCAN
THIS QR CODE



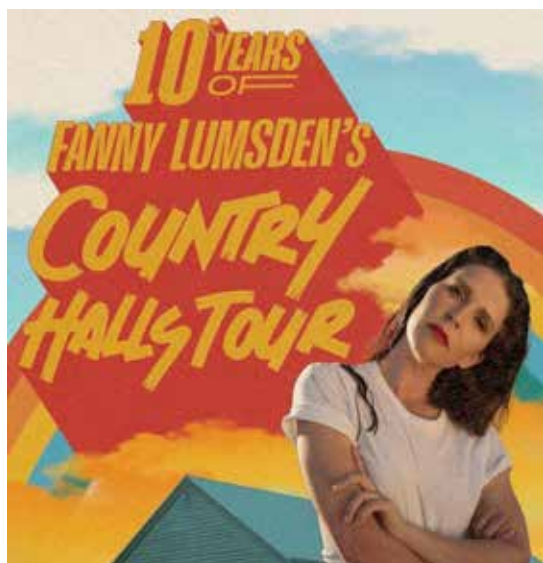
Walcha Central join Kids Lit Quiz

On Monday 3 April, 12 self-nominated students in Years 5 and 6 from Walcha Central School joined 20 teams from over 8 schools in the New England area at Armidale City Public School for a trivia style literary quiz. Walcha teams competed with great sportsmanship against over 70 students, testing their knowledge of all things reading, answering complex questions about genres, characters and books ranging from Dr Seuss through to Shakespeare.

The students had a fantastic day with many coming away saying the questions were hard and made them think some more but it was all part of the fun. Belle said she loved how the prizes were new books to read and Olivia won \$5 by answering a higher order thinking question, 'it was awesome' she said.



Olivia, Xaphyn, Frankie, Morgan and Isabelle working together to answer as many questions as possible



Don't forget to get your Fanny Lumsden tickets

Walcha business owners have stepped up to support the Yarrowitch Community host Fanny Lumsden's Country Halls Tour this Saturday night. Walcha Veterinary Supplies, Cross Bros Butcher, The New Birds Boutique, Amcal Chemist, thebigblackbuilding and Paperdolls House have all generously donated items to be part of a great raffle being held and drawn on the night.

This is guaranteed to be a great night's entertainment for the whole family, featuring Fanny Lumsden and her band – the Prawn Stars, Max Jackson and local talent Lanni Ryan. There will be food available from 5.00pm and camping available. This will also be a great opportunity for those who attend to see the new Yarrowitch Hall renovations.

TICKETS: are selling fast and there is limited seating. You can purchase tickets online at www.fannylumsden.net/country-halls-tour, or they can be bought on the night at the door but will cost a little more.



ARE YOU BOGGED MATE?

How to Help a Mate That's Feeling "Stuck"

ARE YOU BOGGED MATE? aims to boost awareness and start a conversation with the broader community about the rising issue of depression and suicide rates among men in rural areas.

We are confronting the challenges that country men face on a daily basis, talking about mental health, and lighting the path to support.

Mary O'Brian has spent her life in rural communities and understands the nature of rural men and the challenges faced by them and their families on a day to day basis.

Mary gives a great plain English presentation that will help you understand what to look for and how to help a mate that's feeling too "stuck" to go on.

Mary's presentation will be followed by time to have a yarn and a cuppa with Mary and some of our local service providers.



Recover Adapt Connect

HealthWISE

VENUES:

URALLA

WEDNESDAY 3rd MAY, GOLF CLUB, PLANE AVE
- 5.30pm to 7.30pm

WALCHA

THURSDAY 4th MAY, BOWLING CLUB, 14E CROUDACE ST
- 5pm to 7pm

GURYA

FRIDAY 5th MAY, BOWLING CLUB, 192 BRADLEY ST
- 5.30pm to 7.30pm

TINGHA

SATURDAY 6th MAY, 13986 GUYRA RD, (OPPOSITE HOSPITAL)
- 11am to 1pm



REFRESHMENTS SUPPLIED AT ALL VENUES

For more information:

Nigel Forsyth (Rural Recovery) **0427840467**
JUST TURN UP, BOOKINGS APPRECIATED

Mary's visit to the New England region has been made possible by the fund raising efforts of the residents of Robb College.

Walcha Garden Club tour to the Southern Highlands



Bus driver Stuart Bayley with Walcha Garden Club tour passengers

Members of the Walcha, Port Macquarie and Gloucester Garden Clubs enjoyed a four day tour to Mittagong and Bowral for the Southern Highlands Autumn Festival last week.

Members viewed five beautiful autumn gardens which ranged in size from four hectares to town blocks. All were perfectly manicured with the addition of autumn hues throughout.

A rare plant fair held in the grounds of the Southern Highlands Botanic Gardens gave members an opportunity to find something special to bring home for their own gardens.

Members also visited the renowned Red Cow Farm garden at Sutton Forest. A damp afternoon didn't even deter the enthusiastic group from enjoying this beautiful garden.

Some members also visited the Sir Don Bradman Museum whilst others enjoyed a spot of shopping in Bowral.

On their way down the group visited Paradise Botanical Gardens on the Central Coast and on the return trip they thoroughly enjoyed the Hunter Valley Gardens.



Red Cow Farm Garden



Diana and Steve Lisle enjoying the 'Quindalup' garden



Joy Mcleod, Chris Hoy, Mary Moran, Robyn Vincent and Jan Gaudron



Carmel Ryan, Jenny Wright, Olive Chandler, Babs Fawcett, Coll King and Coral Westfold

Students invite you to their Biggest Morning Tea

Walcha Central School is inviting the Walcha community to Australia's Biggest Morning Tea, Thursday 25 May, 10:30am – 12 noon, in the MPC foyer.

Delicious sweet and savory treats and cafe style beverages will be prepared by students participating in the Hands on Learning (HoL) Program under guidance and support from School Chaplain Mark Riordan and Hospitality Teacher, Dinah Jones.

The HoL program was implemented at the school in Term 1 this year for selected high school students. Benefits include gaining skills in barista and safe food handling courses, and developing work ready competencies such as collaboration, organisation, communication and problem solving. Skills such as budgeting, fundraising and marketing are also core elements of the program. Menus are developed each term, HoL students and staff have the opportunity to purchase meals and drinks once a week.

Come and sample the fruits of their labour, whilst making a donation to Cancer Council in their special 30th Birthday BMT celebration. RSVP is required by Monday 22 May by phoning 6777 2777 or email walcha-c.school@det.nsw.edu.au



Maddie with Mark Riordan making pasta during HoL class in WCS commercial kitchen.



IMACKA PROPERTY

56 Bridge Street Uralla

02 6778 3066

Iain Mackintosh 0416 160 180

www.imacka.com



\$1,350,000

"TABLE TOP" 850 TABLE TOP ROAD WALCHA

This 254.4 hectare (628 acre) property is situated approximately 32km north east of Walcha. Principally undulating to hilly basalt and traprock soils in a high rainfall area.

There are 8 main paddocks and 9 dams plus a bore with an electric pump providing water to troughs. Approximately half the property is arable. Creek water runs through the property.

Improvements include a three bedroom cladded weatherboard home with slow combustion wood heating and reverse cycle air conditioning. The kitchen has a wood burning stove and an electric stove plus a walk-in pantry. The bathroom has been renovated and the house has been installed with solar power back to the grid. Woolshed has attached hay shed.



\$750,000

8 Acres — 220W HILL STREET WALCHA

This 3.3 hectare property is situated on a level block on the western side of town. The three bedroom hardiplank residence has been renovated in recent years and includes a large kitchen with dishwasher, gas cooktop, island bench and breakfast bar. New floating timber floors extend to the lounge/dining area and the media room. Two of the bedrooms have built-ins and reverse cycle air conditioners while the lounge room has a slow combustion wood heater and reverse cycle air conditioning.

The attached enclosed pergola includes the BBQ area. Plantation Shutters on the windows throughout the house are designed to adapt to the weather changes. Adjoining the house is a new studio that has reverse cycle air conditioning and all the attributes of a granny flat.

Other improvements: double garage with workshop, two stables, storage sheds, chook run, 6 dog kennels, 2 dams.



**151W
FITZROY
STREET
WALCHA
\$390,000**

Situated on an 847m² block just 600 metres from the CBD, this rendered home is the ideal turn-key investment. The lounge room with slow combustion wood heating and a gas outlet has views to the north and leads to the front sunroom. The two large bedrooms have new carpet, while one has an en-suite bathroom. The second bathroom adjoins the second bedroom, while the laundry has the second toilet. The large kitchen/dining area has room to add your personal touches. A new double Colourbond garage is at the rear of the property.



**102E
APSLEY
STREET
WALCHA
\$298,000**

Situated on an 809m² level block just 500 metres from the town centre is this three bedroom weatherboard home. The large kitchen leads to the living/dining area with a slow combustion wood heater, a gas heater and reverse cycle air conditioning. The two bathrooms have been renovated in recent times. Wheelchair access leads extends from the kitchen and laundry area to the back yard. Included is a single garage, a carport plus a workshop area.

Take advantage of your Vouchers before 30 June

Local parents are reminded to take advantage of the hugely popular Active Kids and Creative Kids Vouchers, made available by the NSW Government.

This year's \$100 vouchers were released in January and local families have until Friday 30 June to claim and spend the vouchers.

The Active Kids and Creative Kids Vouchers are a great opportunity for parents to introduce their kids to a new activity without having to outlay a significant amount of money at a time when the cost of living remains so high.

Families are doing it tough, with many having to make the agonising decision of cutting back on activities. The vouchers are important and ensuring that kids don't miss out on things like swimming lessons, dancing or playing footy for their local club.

Parents with kids aged between four and a half and 18 are eligible, so make sure you get your hands on a voucher today.

The Active Kids program provides a \$100 voucher for parents, guardians, and carers of school-enrolled children to use towards sport and active recreation costs each year.

The Creative Kids program provides a similar \$100 voucher to be used towards the cost of lessons and fees with registered Creative Kids providers.

Current vouchers released on January 1 are valid until 30 June 2023. If you haven't accessed your vouchers you have just under two months to claim. Visit the Service NSW website to have a look at registered providers in our area, then apply.



Beware myGov scam

A cruel scam is targeting unsuspecting Australians struggling with rising cost of living expenses by promising a one-off myGov payment to "help you cope" with the crisis.

The scam text claims to be from the government service, but it instead works by duping the recipient into sharing their personal details.

The scam text message states *"myGov: We're providing \$800 in a single payment to help you cope with the cost of living crisis,"* alongside a link to a faulty URL posing as a government website.

MyGov has issued several recent alerts warning about different scams spoofing the organisation. Its advice for suspicious messages is to never reply, open any links or download any attachments.

myGov will never send you an email, SMS message, or direct message or private chat on social media, asking you to click on a link to sign in to myGov, enter your bank details, tell them your personal details, including your Customer Reference Number (CRN) or Tax File Number (TFN).

Customers who have given their myGov details and other personal information to scammers should contact the Services Australia Scams and Identity Theft Helpdesk.

what's the goss

with AJ Cross



Walcha have four more state Golf Champions after eight time Walcha club champion Simeon Cross teamed up with Donna Martin to win the Nett division of the 2023 NSW Veterans Mixed 4BBB Sandgreen championships hosted here by the Walcha Golf Club last weekend. Club captain Willy Brennan and 14 time ladies club champion Margaret Davidson took out the scratch division. Congratulations to all four players.

...

Still on golf Peter 'Granite' Norbury and Wayne Brennan played a round at Uralla early last week and after they finished their 18 holes headed to the clubhouse for some rehydration. During that time 'Granite' got into a conversation with a bloke where he asked the old mate how he went out on the course which drew the response "You ought to know I went around with you guys." 'Brenno' reckons he also had trouble identifying their opponent after he took off his hat and sunglasses. Talk about an eye for details boys.

...

My Godson Jonnie Cross celebrated the milestone of 40 years on the planet last week and at one stage on his birthday I asked my much better half Linda how old she thought Jonnie might be to which she replied '28'. When I told Jonathon about the guess he said he would take it but did suggest Linda might have been thinking I quizzed her on how old he acts sometimes.

...

Please note – The Walcha/Uralla Tigeroos and Jillaroos take on the Moree Boomerangs at Peter Fenwicke Oval this Sunday (not Saturday) in Round 4 of their Group 19 competitions.

...

Congratulations to local junior rugby players Koby Brennan and Toby Ireland on their selection in the Central North U/14s boys team for the 2023 season after recent trials. Koby plays in the backs while Toby is a utility forward able to handle most positions in the pack. Best of luck boys.

...

Congratulations are also in order for talented Walcha Central School athlete Blaine Cooney who was selected in the North West PSSA Rugby League team after trials last week. Blaine was picked at five eight which makes one wonder how big the team forwards are. Kobie Brown and Brax Kemp also trialled and were unlucky to miss out on selection.

...

It was a busy few days for the trio who then backed up for the Cross Country at Walcha Central the next day but then played for the school boys Touch Football team who progressed to the next level after good performances in a knockout held at John Oxley Sports ground last Friday.

...

Will done to all the athletes who have qualified for the Zone Cross Country to be held at Armidale Friday 12th May after finishing in the top six positions in their respective divisions which included a number of Small School competitors. The Touch team are currently waiting to see who they play in the next round with a date to be set. Good luck to all involved.

...

Local 'Sparky' Ian Bird and his much better half Julie were were interested spectators at the Cross Country there to watch grandsons Max and Ollie Lisle compete. At one stage 'Snow' informed Julie she had just missed Ollie run after he spotted a little blonde haired bloke cruise past. Funny thing happened in the next race when Ollie raced past prompting 'Snow' to declare "Gee some of these kids are hard to identify" much to the delight of Julie. Don't worry Ian yours truly got caught out a couple of times also.

...

Go Andy! Last Sunday I received a message from Golf Club Captain and Horse Racing enthusiast Willy Brennan suggesting I get on Number 12 in Race 7 at Grafton that afternoon. Having read the form guide earlier I thought the odds were a bit big but decided to put a few dollars on for the Newie No2 Syndicate while placing a bit on for myself. Willy reckons he deserves a beer or three after Andy saluted by a comfortable margin paying \$21.30 for the win and \$4.30 a place.

...



Ladies Golf

Last Wednesday was a Graham Betts qualifier playing Stableford for Sarah Days MTA Travel trophy.

The winner with a great score of 40 points was Sue Partridge. Sweepstakes went to Julie Olrich with 36 points, followed by Cheryl McDonald with 35 points.

NTP on 3 was Pauline Carter and the second shot on 18 went to sister Sue Partridge.

Congratulations to the Vets team of Neil Dark and workers for putting on a very successful Vets tournament over the weekend and a special thanks to Lyn Dark and Linda Ballard for supplying such delicious meals for us all on both days.

Today we are playing a Graham Betts Stableford Qualifier for Loretta Blanch's trophy.

Rugby League

Walcha/Urala won both their Group 19 Rugby League matches against Inverell at Woodville Oval Urala last Saturday when the Tigeroos got up 24-20 after the Jillaroos kicked off the afternoon with a 20-12 victory.

In the main game the visitors skipped away to a 10-0 lead after seven minutes through two tries, one of which was converted.

Midway through the opening stanza fullback Shuaib Rhodes-Swain opened the scoring for the home side with an unconverted try and then converted a try by Cooper Boyd in the 29th minute to tie the fixture up at 10 all. Once again the Hawks hit the front with a converted try four minutes later before Jack Doran touched down just 10 seconds before the half-time hooter and when Rhodes-Swain converted the scores were equal again at 16 all.

Unconverted tries to Ben Hamilton and Josh Dailey put the Tigeroos 24-16 in the lead before Inverell bounced back with an unconverted try 10 minutes before the final hooter to finalise the score at 24-20.

One of the game highlights was when speedster Jhorden Coulter intercepted the ball deep inside his own half before racing 85 metres only to be bundled into touch just short of the try line.

Best and fairest points went to - Group 3 Jack Doran 1 Zac Walters; Club 3 Mikey Carter 2 Shuaib Rhodes-Swain 1 Brudy Dexter and Josh Dailey. Players player Cooper Boyd.

Jillaroos

Walcha/Urala were forced to comeback from a 12-4 deficit at half-time to get the job done against Inverell last Saturday.

The visitors scored two converted tries during the opening stanza while the Jillaroos points came from a try to skipper Nicola Hoy. Spectators barely had time to finish their half-time hot dogs when Taneika Landsborough scored the first of her two tries just two minutes into the second session. The flags were raised by Joscisca Matapakia and then she scored a try to give the home side a 14-12 advantage after 12 minutes.

With five minutes remaining on the clock Rachel Green raced 80 metres before off loading a pass to Landsborough five metres out from the try line which finished in a try under the posts. The try scorer landed the conversion to finalise the score at 20-12.

Best and fairest points went to - Group 3 Rachel Green 1 Taneika Landsborough who also received 3 club points. The remaining club points went to Jojo Matapakia 2 and Rachel Green 1. Players player Nicola Hoy and Jojo Matapakia.

Round 4 of the Group 19 competitions are scheduled for this weekend where Walcha/Urala are drawn to take on the Moree Boomerangs here at Peter Fenwicke Oval on Sunday 7 May. Please note the change from the usual Saturday game.

Cricket

The Walcha/Urala Cricket presentations will be held Saturday 13 May at the Commercial Hotel commencing at 12:30pm. All players and supporters are invited to celebrate a very successful first up season in the Armidale and district competition where both 2nd and 3rd Grades both finished premiers.

Could all those people interested in attending please let club President Wayne Boyd or Ed Blomfield know of your availability by Thursday 11 May.

Tennis

The Trish Partridge Memorial afternoon was full of friendship, chat, laughter and of course tennis. There were even a few people spotted on the courts who have not played in a very long time. So much fun was had.

It was lovely that Brooke, Beck and Charlie could join us from Newcastle. A special mention must also go to Trish's good friend Jennifer Clegg (nee Lockyer), Jennifer's brother Paul and his wife Catherine who came all the way from Sydney. Approximately 50 people attended throughout the afternoon and there was a lot more who wished they could have been there.

Thank you to everyone who contributed to the afternoon including donating sausages or making slices, cake, salads and desserts as well as helping with the BBQ and in the kitchen.

Margie Carter was the lucky recipient of the beautiful bowl. Overall it was a wonderful afternoon of love and respect for an amazing lady.

Bowls

Dads Army: A game of triples and a game of pairs was played on Thursday afternoon in glorious sunshine.

In the triples match, Barry Kliendienst, Matt Andrews and Adam Hall could only manage to win two ends in their loss to Brian Goodwin, John Watts and Peter Hayes.

In the doubles encounter the chook winners Sari Andrews and John McCormack defeated Noel Goodwin and Geoff Salt in a closer game.

The raffles were won by Mick Steep and Barry Kliendienst.

Ladies Bowls

Last Thursday the semi-finals of the Club Singles Championships were played and resulted in wins to Sari Andrews over Deb Richards 25-17 and June Hayes defeated Jan Cross 25-11. This week the final will be played between Sari and June with marker Deb Richards. In a social game of pairs Carmel Ryan and Matt Andrews defeated Janet Goodwin and Wendy Moore 24-13.

There is also social bowls on players. Don't forget the starting time is 9:30 for 10:00am.

Last week the date for the Pam Westbury Memorial Bowls Day was incorrect and it is on Wednesday 10 May with names in by the 6 May.

The Walcha Presidents Day is being held on Thursday the 25 May.

Design, print and secretarial services

- Photocopying
- Laminating
- Business Cards
- Stationery
- Invoice/receipt books
- Labels
- Sale Catalogues
- Brochures
- Resumes
- Cards
- Stamps and more...

Book your sale catalogues in now



Phone 6777 1111

wtc@walchateleccottage.com.au

church notices



ANGLICAN Sunday 7 May Holy Communion 7:30am, Family Service and KidsClub 10:00am, Niangala Holy Communion 2:00pm

PRESBYTERIAN

Walcha Sunday 9:30am
Phone 6777 2539

CATHOLIC Sunday 10:00am Mass



Positions Vacant

Presbyterian Aged Care



Apsley Riverview Walcha

We are currently recruiting for the following positions:

Care Workers part time and casual

Registered Nurse full time, part time, casual

Immunisation requirements: you must have had both Covid shots in order to work in an aged care facility with Presbyterian Aged Care.

About us: Our mission is to provide care and accommodation for older Australians with a commitment to excellence. We care for and nurture the whole person and strive to enable our residents to live in a safe and caring environment.

Would you like to opportunity to care for older people in your community? How about working in a role that is truly rewarding in a workplace that feels like a big family? If yes we would love to hear from you.

Employment with Presbyterian Aged Care is subject to satisfactory background checks which include an NDIS Check and reference checks. To be successful in these roles you must hold valid working rights in Australia.

If you would like to join our wonderful team, please contact Julie Blake (Facility Manager) or speak to our office staff for a full job description.

Phone: 02 6777 4400

Email: jblake@pcnsw.org.au

ARE YOU LOOKING FOR A REWARDING CAREER AS A WORKS ENGINEER WITH WALCHA COUNCIL?



Walcha Council are looking for a Works Engineer. We are offering a great package for the right person to develop and deliver high quality programs and projects for Council's road network and other infrastructure works.

We are keen to find the right engineer, which makes us flexible and willing to negotiate the terms of your employment. You could be; about to graduate, recently graduated, or someone with a wealth of experience. We will work out a competitive package with you, which may include Lease Back Vehicle, Relocation assistance and your remuneration amount. The salary and conditions will be in accordance with the Local Government (State) Award 2020.

Council is an EEO employer and offers a smoke free workplace. For more information, and to apply, visit Council's website – Positions Vacant Section. <https://bit.ly/3A30YD>

Applications close Monday 8 May 2023.

Small Council, Big Opportunities!

Phillip Hood, Interim General Manager Walcha Council, PO Box 2, Walcha NSW

Death and Funeral Notice

BARNETT; Maree Esther

23/08/1953 - 28/04/2023

Beloved wife of Tony

Dearly loved mother of Sally Davidson, Rob, Jock Barnett and Ash Wheeler.

Loved mother-in-law and grandmother of their families.

Aged 69 years

As an honour to Maree, the family have requested bright coloured clothing be worn to her service.

Funeral Service to be held at the Walcha Central School, Thursday, 4th May 2023 commencing at 1:00 pm

Piddington's AFDA 6772 2288

Meetings

The Walcha District Tennis Association AGM will be held on Monday 8th May. All Members are welcome to attend.

Walcha Garden Club Community Day Friday 5 May 2023, at the Walcha Health Service commencing 9.00am. BYO garden tools. Morning tea supplied. Enquiries: Di Bazeley 0403 464 865 or D Lisle 0429 799 083.

Public Notices

Amaroo notice to members

EYE CLINIC

Friday 5th May at Amaroo office from 9am - 3pm. Phone bookings 6777 1100 OR email: office@amaroolalc.com.au

DR GENEVIEVE FREER

Phone 6777 2068 0429 668 583



Woolbrook & District Progress Assoc.

TRIVIA NIGHT – ROYAL THEMED

~ Saturday 6 May Woolbrook AIF Hall ~

Dressed as your favourite royal. Cost \$30 pp, includes a 2 course meal. BYOG and snacks.

Hall open 5pm, dinner 7pm followed by trivia. Trivia Teams 6 people (per table), organise your own team or come along and make up a team. Call Belinda Laurie 0428 628 3627 by 28 April.

The Walcha District Tennis Association Street Stall will be held on Sat morning 6th May. 1st Wood, 2nd Meat and 3rd Food Hamper.

Agistment Wanted

Agistment/lease wanted around Woolbrook, Niangala, Bendemeer or Walcha for a small mob of very quiet heifers. Phone Nathan: 0473 878 144.

For Sale

Laver pullets. All breeds. 20 wks. Delivered Friday 12/5/23. Phone Jim 0428 194 105

For Rent

FURNISHED FLATETTE – Kitchenette, ensuite and central heating. Free Wifi. 3km from Walcha. **REDUCED – \$300 p/w.** AVAILABLE NOW. References/Bond/Tenancy agreement. Phone 0428 203 777.

Raffle Results

Anzac Stall winners: 1st and 2nd Don McHattan and Shirley O'Keefe. Wood - kindly donated by Brian Smith. 3rd Joy Hayes – Cross Bros. voucher donated by Vic McIvor 4th Chris Hoy – Bowling Club voucher donated by Adam and Julie Hall. Thank you all for your wonderful support

Give away

Pet cockatoo. Phone 6777 9138.



STACES FAST FREIGHT

Delivering
Tamworth – Walcha
0429 608 409



CHIROPRACTOR

K Samantha Goor

B.Sc. Anatomy (NSW) M Chiroprac (Macq)
Tuesday & Friday from 9.00am
6777 1340

MOBILE-FIX AUTO+AIR

Mobile Repairer &
Airconditioning Specialist

Licensed Vehicle Repairer
Lic No: 460096 RCL Lic No: AU23616

PATRICK STAGE – WALCHA
Mob. 0428 780 077 Ph. 6778 0595



ENGINEERING

John Wall

• Stock floats • Feeders • Sheep & cattle
yards • Steel framed sheds & mobile welding

6778 0588 • 0428 778 087

Tree lopping
Tree removal
Truck & chipper
Bobcat
Post hole digger
Trencher
Woolshed cleaning
Stockyard cleaning



Scott Kermode

0427 100 889

treetopservices@bigpond.com

STORAGE CENTRE WALCHA

20' Containers available for rent \$35 pw + GST
Secure Undercover parking for cars,
vans etc \$15 pw + GST

ANGUS 0427 787 332



CURTIS

MOWERS & SMALL ENGINES

**ALL
TYPES**

- Mowers • Ride-ons
- Pumps • Chainsaws
- Whipper snippers
- Chain sharpening
- Bar dressing

SELLING New 30 & 40 Tonne Petrol Hydraulic
WOOD SPLITTERS from \$3,100 delivered
• Chainsaw chain •

JAMES – 0488 020 762 (7 Days)

TRU BLU RECYCLING

**CASH
FOR
CARS & TRUCKS**
ANY CONDITION

**TRUSTED LOCAL OPERATOR
FOR OVER 15 YEARS**
Mark 0412 310 650

Nick Moore PLUMBING & EXCAVATION SERVICES



Highly qualified and
experienced plumber
All aspects of Plumbing
and Gas Fitting
Wood heater installation
Roofing and Guttering
Gold Licence No 59555C

Nick 0418 691 306
nickmoore203@yahoo.com.au
Katy 0422 034 660

A G W RURAL CONTRACTING

GPS Equipped boom spraying
Andrew Wauch 0427 549 748

ELECTRICIAN WALCHA

LICENSED CONTRACTOR SINCE 1990

"Not just that air conditioning guy"

Residential & Commercial work

Dave 0438 007 275

SPLITZAIR (NSW) Pty Ltd 182154c

Lic. EC41191



M L MASSAGE THERAPY

Remedial and Sport Massage

MADDIE LANCE

TUES TO FRI 9AM - 6:30PM

0432 635 994

MOBILE
TREATMENTS
AVAILABLE



Andrew: 0427 549 748
Toni: 0421 972 354

JK PACIFIC TILING

**WALL & FLOOR TILING
WATERPROOFING**

0419 972 129

Email: jake.kerby@hotmail.com
ABN: 76781656814 Licence no: 335540c

GRAPHIC DESIGN

CORPORATE IDENTITY & LOGO DESIGN
BRAND GUIDELINES • SIGNS • BOOKS & MAGAZINES
ANNUAL REPORTS • CATALOGUES • BUSINESS CARDS

0418 281 489 • OSCARWAUGH@GMAIL.COM

SELF STORAGE

NORTH STREET – WALCHA
VARIOUS SIZED SHEDS
SECURITY FENCED

67773899 0428 653 307

DISCLAIMER LETTERS TO THE EDITOR are submitted on the condition that The Walcha Telecottage as the publisher of The Apsley Advocate may edit and has the right to, and license third parties to reproduce in electronic form and communicate these letters. They are published at the discretion of the Editor and Board. The Apsley Advocate is printed by The Walcha Telecottage, PO Box 116 Walcha NSW 2354. Phone 6777 1111 Fax 6777 1112. The Walcha Technology Co Operative Limited, the Editor and Staff of this Newspaper have published any article here-in in good faith and bear no responsibility in respect to the accuracy of the information contained in such article. Any person or persons publishing material in this Newspaper do so in the knowledge that they shall personally accept any responsibility for the accuracy and other correctness of such articles and also accept full responsibility for the legal consequences if it be found that the article contains any inaccuracies in the contents of any such articles. **DEADLINE MONDAY 4.30PM** Editor: Anthea Macpherson. Advertising and Sport: Rosalie Gibson, Megan Scrivener, Emily Scrivener and Joscisca Matapakia.

Marchant Est. 2000 BROS.



A FULL RANGE OF AFFORDABLE TRANSPORT & EARTHMOVING
COMMERCIAL WATER CARTING
Dam construction/maintenance, stick raking, road building,
site prep, pipe laying and all timber work.

Check out our website for the full range of machinery,
attachments and services available

**FIREWOOD ORDERS CURRENTLY CLOSED
UNTIL WE CATCH UP ON ORDERS**

ORGANIC, LOW SMOKE, HIGH HEAT.
Beat the climate change, order now

Earthmoving and Heavy Haulage Transport
Jason 0427 490 487
02 6777 2024 marchantbros@bigpond.com
www.marchantbros.com.au

WALCHA BOWLING & RECREATION CLUB

Mon – Wed 4.00pm – Close

Thursday 4 12.00pm – Close

Ladies bowls 9.30am for 10.00am start
Social bowls 1.00pm

Friday 5 2.00pm – Close

2.00pm Bingo

6.00pm Bistro

- Creamy lamb chops
- French chicken rissoles
- Italian tomato and prawn linguine
- Normal menu available, takeaway and delicious dessert.

6.00pm Tickets available for raffles –
meat and veg trays

6.00pm Free Bingo

8.00pm Raffles drawn & Members Draw

Saturday 6 11.00am – Close

6:00pm Bistro

2-4pm **TOSS THE BOSS**

Sunday 7 11.00am – Close

12.00pm Bistro open

Children U/10 kids meal free with an
adult order

12.00pm Meat, fruit and veg raffles

12-2pm **HAPPY HOUR**

**MEMBERS
DRAW
\$350**

YOU MUST BE A MEMBER FOR
2023/2024 TO BE ELIGIBLE TO WIN

**TOM'S COCKTAIL
BLUE LAGOON**

Glow Party Disco

12 May – 6.30pm

Dress up in something starting
with 'G'. Great prizes to be won

Mother's Day

14 May – Roast of the day
Music by "Strings & Things"
Free glass of wine or soft drink
for mum and a mothers day
hamper ticket

Do you live in Walcha Shire? If so you **MUST** be a member to enter the Club
Social Membership \$15 – Full Membership \$105. PHONE 6777 2077

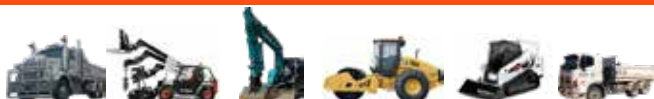
FOR ALL YOUR EARTHWORKS TRANSPORT AND ELECTRICAL NEEDS

ALL ASPECTS OF RURAL, COMMERCIAL & CIVIL WORKS



- Freight & Transport • Machinery Float • Stick Raking
- Road construction and maintenance • Trenching
- General Earthworks • Drilling • Mulching
- Dam maintenance and construction
- Erosion Control • Site Preparation • Electrical Works

Ian Notley 04188 29188 • Mark Notley 0422 637 686
www.eteservices.com.au



LINMAC ENGINEERING

IF YOU NEED IT – We make it!

CUSTOM TRAYS AND TIPPERS



- Customer consultations to make sure we build to YOUR individual specifications
- Sandblasted and powdercoated
- Toolboxes, timber floors, tipper trays, water tanks ... whatever you need!

AUTHORISED HUSQVARNA DEALER



**Check out our new facebook page:
Linmac Engineering Walcha**

211N Pakington Street WALCHA
Phone 6777 2822 Email enquiries@linmacengineering.com.au