

THE APSLEY Advocate

CIRCULATION 1810 P 02 6777 1111 F 02 6777 1112 wtc@walchatelecottage.com.au walchatelecottage.com.au

8 March 2023

It's Show Time

By President Daniel Kermode

The 2023 Walcha Show will be held this Friday 10 and Saturday 11 March, with an exciting array of new entertainment for the whole family, along with many old favourites.

On Friday, competitions begin including Horse events, cattle judging – this year the feature breed is Shorthorns, Merino judging including junior judging, Prime Lambs. HealthWISE will have nursing staff to provide health checks during the day.

Friday evening will see the very talented Walcha equestrian, Ash Barnett, and her amazing horses Chilla and Spider's Liberty Freestyle Horsemanship Show. Ash won the inaugural Liberty Championship at Equitana in 2022 – a huge event in Melbourne showcasing the best of equine competitions. The communication and connection Ash has with her horses has been established over many hundreds of hours of working together. This is an event not to be missed!

Following will be the old favourite Dog Jumping competition, so bring your favourite mutt along.

The famous Walcha Speed Shear competition has moved to Friday night at 7.00pm, with the final event "Walcha versus the World".

Fireworks at 8.30 and the bar and BBQ close at 11.00pm. Sideshow alley will entertain all ages for the duration of the Show.

We have an increased number of trade exhibitors, and some are showing with us for the first time, like Hutchison and Pearce. It could be interesting to see the banter between red and green tractor lovers.

Saturday morning starts with the BBQ at 6.30am, with events starting at 8.00am.

The Horse events continue, Yard Dog trials, Meat Sheep judging, Poultry Judging, Motor Bike Comp, Demolition Derby, Fashion Parade, Peanut Cannon.

At 10.00am the popular Woodchop makes its return on Saturday thanks to Gary Dunn's efforts.

Plus, the Sports Shear will be on Saturday morning.

The Pet Show at 10.00am, remember child handlers only. Then Fairy LaLa will have her first of several

shows at 11.00am with face painting before and after each of Fairy LaLa's shows.

The Pavilions will be stocked with plenty of handicrafts, preserves, vegetables, wool, artwork, photography, flowers and cooking. The men's cooking competition which grows bigger each year will see them creating Monte Carlo biscuits – who will take out the title?

We will have Angus Street CEO of AuctionsPlus as our special guest. Angus will be opening the Show on Saturday, following the Grand Parade.

Available at the fashion parade will be cheese boxes for purchase at the bar, why not grab one of these along with a glass of your tippie of your choice to enjoy while watching the latest fashions.

Before the Demolition Derby on Saturday afternoon, the National Whip Cracking Champion, Daniel Wicks, will entertain the crowd with his skills that have earned him this title for the past 20 years. Following the rounds of the Cattle Dog Challenge on Saturday morning, the final will start at 6.30pm in the rodeo ring, with live music in front of the bar by Tommy Miller from 6.00pm. Bar and BBQ close at 11.00pm.

Once again horse and cattle entries should be made online at <https://showday.online> – with Demolition Derby drivers also able to enter at <https://showday.online>

The Show Society now has a number of Tap'N'Go machines and these can be used to enter at the gates, and can be used at the bar and for horse entries. Memberships can be paid at the Secretary's office using Tap'N'Go this week, up until Thursday. Please note only eligible vehicles are to enter the Showground and this will be via North Street gate, and the pedestrian entry only via Derby Street gate.

Why not consider becoming a member of the Walcha Show Society? This is great value at \$40 which includes complimentary tickets for the member, their guest and two children under 17, for the two days of the Show. Single membership available at \$20. Enter the competitions held in the main pavilion and horticulture pavilion for free once you become a member.

The Show Society committee looks forward to seeing everyone there, all are very welcome!

EST. 1865
COMMERCIAL
HOTEL
WALCHA NSW

OPEN

7 days week from midday
For Real Pub Food

LUNCH + DINNER

Tuesday – Sunday

**MONSTER
RAFFLE**

Friday nights
Drawn 7.30pm

Proud sponsors of Walcha
Rugby, Walcha Cricket, Walcha
Jockey Club & Walcha Tennis
DONATING TO LOCAL CHARITIES

COMMERCIAL LANE
PHONE 6777 2667

**Friday
10 March**


AuctionsPlus

Pomany Angus
50 EU Angus Heifers
PTIC to Wagyu Bulls

Contact Miles Archdale
0428 660 326

 **Nutrien**  **Boulton's**

3n Derby Street Walcha
Phone 6777 2044
admin@boultonswalcha.com.au



**Purchase Cydectin Platinum
and go in the draw to WIN
an Optiweigh system.**

Valued at \$19,250

One entry for every purchase of
Cydectin Platinum 5L, 7L or 10L
or three entries for purchase of a
Target Beef Productivity Pack.


WALCHA VETERINARY SUPPLIES

6 Aberbaldie Road Walcha • Phone 6777 2588 • www.wvs.com.au



OK EARTHMOVING

Specialising in road construction & maintenance

• Stickraking • Dam building • Erosion works



Bulldozers • Excavator • Tip-truck • Vibrating Roller

PH 6777 7430 FAX 6777 7448

PETER O'KEEFE: 0429 944 821



Positions Available:

**Join our Team.
It's a rocking
workplace!!**

**Looking for
Excavator
operators and
Truck Drivers**

\$35-50/hr

**We are back for 2023 and are
taking orders today!**

**Our Quarry Products are perfect
for rural roads that have been
waiting for you to fix.**

**We also supply for highways,
construction jobs, gravel roads,
unspec and spec materials.**

**We have a variety of products
that will suit your every need:
big rocks, small rocks,
of any size!**

Prompt local delivery to you

Contact us today!

Have a rock solid day!

SCOTT@BROOKLYNQUARRY.COM.AU

0434 011 570

1643 OXLEY HWY, WALCHA RD. NSW
(BY APPOINTMENT ONLY)

WWW.BROOKLYNQUARRY.COM.AU

around the traps



By SIMON NEWTON

If you have travelled outside the district recently you don't have to go far to see how dry it's getting once you get off the tablelands. A trip out Barraba over the weekend made me think that we are in a better position than most even though the district is looking for some crucial autumn rain. It was hot, dry and dusty out there and the entire trip we didn't see an oat crop which means there won't be any early fodder crops before May or even June. If you were lucky enough to be under another shower last Thursday, 10-25mm fell around parts of the area and speaking with a few producers over the weekend they had between 30-40mm for the week.

The long term forecast for autumn indicates drier and warmer conditions than usual for large parts of Australia which is not what we are looking for. Autumn is the time of year to grow some soft feed and get the grazing crops well established for the winter months ahead. The showers even though they have been great aren't giving us enough moisture to get the growth ahead of the livestock and for some reason a warm breeze has been hanging around which isn't good. The crops around the area look to have had a great germination and now everyone checks them on a daily basis to see if they have magically grow enough over night as the livestock eagerly want to get on them. It is a hard time of year for many producers as stock earmarked for fattening on crops are taking up paddocks which will be needed for the winter months for breeding, or lighter younger animals. Keep an eye on the northern QLD monsoon trough that is forecasted to head south over the next 10 days, any luck we might getting some spin off moisture from that system.

The dry weather is starting to bite as the spring drop weaners begin to run and sales like last Friday Tamworth weaner and store cattle sale swell to capacity. The market was under pressure with weaner steers making either side of \$1300 to top at \$1500, weaner heifers from \$700-\$900 and topping at \$1400 for joinable weight heifers. PTIC heifers topped at \$2150 while young cows and calves, unjoined look to be some value buying topping at \$2880. The current market offers plenty of buying opportunities especially if you're restocking after selling heavier cattle on the same market. The fat market on Monday saw Tamworth yard 2000 head of cattle and Gunndah back it up on Tuesday with 2500 hd. Tamworth's young restocking steers and feeder steers sold to a dearer trends which was quality related, topping at 516c/kg for 291kg and 388c/kg for 480kg feeders. Cattle to domestic kill sold to a cheaper trend over 500kg while heavy export steers topped at 340c/kg for 612kg and fat cows sold to a slightly cheaper trend topping at 285c/kg.

Tamworth had its largest yarding of 3000 lambs and 4000 mutton on Monday for some time with store lambs meeting reduced competition once again, selling for \$70-100 due to lack of fresh lamb feed. Trade weight kill lambs lost \$8-10/hd topping at \$175. Export lambs also lost ground and sold between \$170-240 while topping at \$286 for some bullock sized lambs. The large yarding of mutton met stronger competition for the better conditioned sheep with a spring fleece. XB ewes topped at \$125, merinos made to \$100 and merino wethers to \$135.

The annual Walcha show is on this weekend which is always a great event on the towns' calendar and I must say one of the best country shows around given the size of our community. Plenty of people travel to visit our show and the committee must be thanked for organising such a great event. Be sure you all head to the show over the weekend.

thumbs



- 👉 To Bill and Trish and the team at Walcha Newsagency - thank you for always providing all the things that we need, and always with a superior level of customer service. What would Walcha do without you?
- 👉 All the Council employees, both gardeners and mowers for taking pride in maintaining the gardens, levee banks and cemeteries. It is a credit to you.
- 👉 To Agfix Mechanical for fixing my tyre straight away.
- 👉 To Karen Barnes and her helpers for securing the Occupational Therapy Services for all the kids in Walcha.
- 👉 To the dogs on the road heading towards Gloucester, causing trouble for the cars and motor bike riders.

St Pat's success at Sport trials

Last Friday, Nate, Albert, Henry (Boys Football), Angus (Boys Hockey) and Annie (Girls Hockey) went to Tamworth in an attempt to gain selection in the Armidale Diocese Team in their respective sports.



Back: Annie Patterson-Kane, Albert Green, Nate Powell and Angus Fletcher. Front Henry Blomfield

Unfortunately, Nate, Albert and Henry missed out on gaining selection in the Boys Football side as they were up against some very stiff competition with over 70 boys participating.

Congratulations goes to both Annie and Angus as they were selected in the Armidale Diocese Girls and Boys Hockey teams that will be competing at the Polding Winter Trials at Tamworth on Friday 28 April. We wish them both the very best of luck.

Walcha Handmade closing down

Walcha Handmade Community Co-Operative Ltd will be closing their doors on 21 April 2023.

Since its inception in July 2014, they have stocked modern contemporary items from local creatives.

Peak membership hit 70, all bringing different wares of woodwork, condiments, quilts, weaving, candles, painting, craft, crocheting, fresh flowers, bake goods, clothes, jewellery, gift cards, pottery, embroidery and much more quirky fun gifts.



Studio space and kids craft corner held many workshops including resin, quilting, embroidery, wreath making, flower arranging, watercolour and photography.

This decision hasn't been made lightly and is conveyed with heavy hearts, dominating factors being fire, drought, road closures, COVID and dwindling member presence.

'Handmade' wish to express their gratitude to Walcha Council for their workshop sponsorship over the years, giving everyone access to their creative space.

Massive thank you to their shoppers, workshop participants and all who made a positive impact to their happy place.

Stock will be available for purchase up until Friday 21 April, any leftover shop /shelving items will be for sale in garage sale on Sat 22 April 8am to 2pm.

Nutrien
Boulton's

Stock and Property Watch

www.nutrienharcourts.com.au



- Two bedroom hardiplank home
- Large renovated kitchen
- Lounge with wood heating
- North westerly dining with reverse cycle
- Renovated laundry with loads of bench space
- Bathroom consists of shower/vanity/bath with separate toilet
- Outdoor entertaining area
- Flat block, fully fenced, 2 x garage sheds, double garage/carport.

\$330,000

Peta Carter 0407 350 781 Trish Donnelly 0427 652 883

New England Twilight
**WEANER FEEDER
& BREEDER CATTLE SALE**

AuctionsPlus™

6pm Thursday 30 March 2023
2800 HEAD ALREADY BOOKED

• FURTHER ENTRIES INVITED •

Call our livestock specialists:

Miles Archdale 0428 660 326 Simon Newton 0467 660 320
Mat Larkings 0427 002 427

AGISTMENT REQUIRED
short and long term

Contact – Simon Newton 0467 660 320
Miles Archdale 0428 660 326 Mat Larkings 0427 002 427



LOCAL SHEARING CONTRACTOR

NO JOB TOO BIG OR TOO SMALL
FREE QUOTES

Available Now

J C SHEARING
JHORDEN COULTER
0474 262 621



Bendemeer 
Renewable Energy Hub

COMMUNITY INFORMATION SESSIONS

WOOLBROOK

23 March, 2023

2.30pm-5pm

Woolbrook Hall

<https://bendemeerenergyhub.com.au/>

Mayoral Column

Eric Noakes, Walcha Mayor

CUMULATIVE IMPACT AND SOCIAL LICENCE

Two weeks ago our Acting GM, Phil Hood, and myself met with representatives from EnergyCo, NSW Department of Planning and Environment (DPE) and The Honourable Matt Kean (NSW Energy Minister and Treasurer). This was in conjunction with the Coalition of Renewable Energy Mayors (CoREM) - Mayors and GMs from a group of councils heavily impacted by the State Government's Renewable Energy Zones (REZ). Walcha sits at the bottom of the New England REZ and has the potential to be heavily impacted by the renewable energy push due to both projected transmission infrastructure and the renewal projects themselves.

The purpose of this meeting was to continue to advocate for agreeable outcomes for communities that are at the centre of the renewable energy revolution. Small councils like Walcha really struggle to resource both finance and staff time to protect our assets and the community so we must stay ahead of the amount of projects that are being scoped for our region. CoREM is not a group that take a stance on renewable energy, we are pushing for better rules, regulation and early engagement from prospective proponents.

From this meeting we gained a commitment for a social, environment and economic impact assessment for the full life in each REZ. Their commitment is to complete this assessment in the 2023 year. There was also commitment of suitable funds over multiple years to bolster our resources through this process. With this, Walcha Council will investigate collaborating with other councils in our REZ to employ engineers or other technical experts to assess infrastructure before, during and after any project at no impact to our budget or the ratepayer. This assessment will form the foundation of the binding agreement to maintain these assets to a standard with any proponent.

Three main expectations for these projects are; payment of 1.5% of build cost to come to affected councils (this is on top of any infrastructure financing agreement), a decommissioning bond to be implemented, and better and early local community engagement. Changes to rating of land used for renewable energy projects are also being explored.

Much of the division that has been seen in our community over the last year or so is the result of poor engagement, information sharing and rumour. While the EIS for Winterbourne Wind sits with DPE at this time, the flyer in the Advocate a couple of weeks ago for the larger Ruby Hills project has the angst simmering within the community again. As I have said before the Australian Energy and Market Operators Report from last year points out that renewable energy projects are coming. Love them or hate them Council's role is to help shape them to fit our community expectations and we must do this well as they will be here for at least 30 years. The aforementioned assessment, and promise by DPE that projects that do not have community support will not be forced onto them, shows a shift in the way that these affected communities are being engaged with by Government.

GENERAL MANAGER

I mentioned our Acting GM Phil Hood earlier, and Phil holds this role while we recruit a new GM following the resignation of Barry Omundson. Barry is off to Tasmania for family reasons, and while we will miss his no nonsense and professional approach we wish him and his family well at this challenging time. During his tenure, Barry has led Walcha Council through some tough decisions leading to rebuilding the foundations of a modern council. There is still plenty of work to be done, but I am confident Council is on the right path to a sustainable future.

EVENTS

The truck and machinery rally in Walcha two weeks ago was certainly a spectacle. The street parade and day at the show ground was extremely well supported. Congratulations to all involved. Many memories and much reminiscing that day. On events, it's only a few days until the Walcha Show. Always a spectacle we wish President Daniel Kermode and his team all the best for another successful show.

Continued on Page 7

Rotary Youth in Agriculture (RYAG)

RYAG Sheep 2023 hits the mark

The students who attended Walcha Rotary Club's sheep industry education camp last week declared it a resounding success. From high tech to sheep handling to working dogs to the food and everything in between, RYAG participants loved it all.

On the first evening 32 nervous teenagers started to get to know their fellow students and the adults running the program. By breakfast next morning new friendships were forming. Then it was off to a very full day at the McLaren family's "Nerstane" Merino Stud where the kids observed vets performing embryo collection and transfers. Next came hands-on workshops including low stress stock handling, sheep classing, selection of rams and a sheep counting competition. In the evening stock transport tuition presented the opportunity to climb aboard a four decker B-double and be introduced to the ins and outs of livestock transport. The evening ended with discovering how it is possible to run a farm from your phone.

Next morning the Blomfield family's "Karori" was transformed into a learning centre. The packed day involved pasture assessments, sheep genetics, tech tools for farm management, feedbase monitoring, breeding strategies, prime lamb production, microscope activities for parasite monitoring and ultrasound carcass scanning. In the evening there was a talk explaining all that happens to wool from greasy bales at the farm gate to innovative clothing, high fashion and even footwear. To round off the night, students were guided through a massive selection of garments in preparation for their wool fashion parade the following evening.

The last full day was again crammed with activities at the showground sheep facility, the butcher shop and dog training pens just out of town. The students plunged into live sheep appraisals, watched a shearing demonstration, had a go at throwing fleeces, skirting them, and classing as well as seeing how on-farm fibre testing is performed. At the butcher



shop, cutting up lambs in numerous ways was demonstrated and some tried their hand at sausage making – not as easy as the experts make it look. In the afternoon there was a talk on the many facets of wool buying and career opportunities in that field. Finally, at James Sweeney's yards, students saw how working dogs are trained and had a go with sheep and a dog to turn theory into practice.

The camp finale was a Gala Dinner at the Walcha Golf Club attended by parents, sponsors, workshop presenters, ag teachers and Rotarians. Students received a certificate and then delighted the adults with their fashion parade of woollen garments. Back at the showground the kids wound down with music and chats around a campfire.

Next morning tired but satisfied students drifted in for a last delicious breakfast followed by farewells to new friends as all headed home to towns and villages across northern NSW.

Walcha Rotarians wish to express their sincere gratitude to our loyal sponsors and amazing workshop presenters without whom these great young adults would not have the opportunity to preview the possibilities of a career in the modern sheep industry.

PKF
Wealth



Achieve the best outcome for your investment and retirement goals. Contact our highly qualified and professional financial adviser today.

Greig Meyer is a Certified Financial Planner and principal of PKF Wealth based in Tamworth and Walcha. For more information or to make an appointment contact one of our friendly staff now.

Tamworth

22-24 Bourke Street
Tamworth NSW 2340

Walcha

12 Derby Street
Walcha NSW 2354

Greig Meyer is an Authorised Representative of PKF Wealth TMW Pty Ltd

ABN 21 154 894 130 AFSL No. 515733



45ft flat top • 45ft single deck cattle float • 26mtr B Double
19mtr mini B Double • Low Loader available for hire



BRIAN
Smith
TIMBER
TRANSPORT

Call us for
your large
Transport
needs

WALCHA

02 67772126

Bonnie Smith 0429 772 077

Brian Smith 0427 780 216

Is the community aware that Walcha Energy are advertising “The Walcha Energy Project” – a 4000MW renewable development, as referenced on their website. *This is over 5.5 times the size of the Winterbourne Wind Project.*

What is the cumulative impact going to be on our community? What will this look like? Walcha Energy, if you are intending to impose this massive industrial project on our district, our community is entitled to answers to these questions. A true community forum is justified and deserving for all members of Walcha.

Traffic – Are we going to have an extra 176 trucks on the road per day for at least 12 years and 288 extra trucks during peak construction, for almost ½ this period. Or worse, if they are overlapping, the impact on the community will be compounded. By the time the construction of these projects is finished, we will be ready to start decommissioning the Winterbourne and subsequent wind projects – similar traffic to construction traffic. This shapes Walcha's next three decades.

Water – The project developer quoted 220ML water requirement for the Winterbourne project. Industry contractor estimates water requirement is 675 ML. On contractor estimates, across all projects, this is enough water to empty our new town water storage, 12 times over.

Housing and Employment – Are we going to have construction villages around our town for 12 years or more? What is the pressure of a large workforce going to do to rental prices in town? Are our locals going to be able to afford to live in Walcha? Where will employees for local businesses (including council) come from and live? How can the council repair roads if they can't find employees?

Loss of Aerial Services – With turbines all over the plateau, what is the future for our aerial services? (Agricultural, leisure or emergency).

Biodiversity – Can we contemplate 5.5 times the impact to environment of the \$64 million offset payments that Winterbourne Wind are willing to pay.

Noise – Sound impacts from the Winterbourne Wind project may be significant as we have demonstrated in the peer review challenging the findings of Sonus in the EIS. What is the health impact going to be if we have projects in all directions around our town? Whatever the wind direction, the community will hear turbines.

Social Impacts – What are the costs going to be on the mental health of our community. How many more “For Sale” signs are we going to see around our district?

Do we want Walcha to be changed from an appealing and attractive agricultural and artistic community with strong tourism attractions, to an industrial powerhouse for NSW supplying 15% of the state's energy? Do we want wind turbines in every corner of our district, which appears to be the intention of Walcha Energy. From Walcha Energy website, “the project covers most of the plateau that surrounds Walcha”.

This is all following on from the Winterbourne Wind Project proposal - a project and EIS described as “worst ever” by Adam Marshall and countless others, also designed and sold by Walcha Energy. **Are future projects going to be any different?**

Is this
really
the future
Walcha
wants?



SCAN CODE FOR
AUDIO VERSION

Walcha Energy,

- **Have you asked the community if they want 630 wind turbines and 2.8 million solar panels?**
- **What is the financial cost / benefit to Walcha** – billions of development dollars, most of which does not enter the district, or leaves the district immediately. A cost and legacy for all of our community to bear for generations to come.
- **Are you going to be honest and transparent with our community?** An advertisement included in the Advocate on Feb 15, 2023, made claims that were not factual ...
 1. The timeline shows a completed project by the end of 2025, the text of the document states scoping is exhibited for 18-24 months, **the time for EIS exhibition and approval is not factored in, nor is a realistic time for construction or installation of powerlines.** Is this a result of a lack of professionalism and experience for a project of this scale? Are associated landholders aware of the realistic timeline of this project? We understand an update is coming after questions from the community flagged these issues. We urge the community to scrutinise this, and all statements made by developers.
 2. The Community Engagement section made a statement that “WalchaEnergy held an information evening at the Woolbrook Hall ... for residents in the Woolbrook Area and properties neighbouring the project.” **It is now apparent this was an event for associated land holders and neighbours, by invitation only, by email and phone call.** *Members of the Woolbrook community did not know about the event.* When are you going to talk to the wider population of affected community members?
- We call on Walcha Energy to **hold a public forum** to discuss their plans and explain the benefits and address the issues and anxiety their projects are causing the Walcha community. The use of private and closed meetings is not for the benefit of the community. The Winterbourne project, that was in the hands of Walcha Energy (or associated companies) for over a decade indicates that community consultation was unsatisfactory and social licence was not achieved.
- **What is the true cumulative impact of all these projects?** We believe the Winterbourne Wind assessment should include the Walcha Energy projects when assessing the cumulative impacts of the project. We would consider these projects to be “reasonably foreseeable”.

Walcha, what can you do?

- **Don't think these projects won't affect you.** Get involved and be proactive. Talk to your friends and neighbours about what you want our town to be in 10 years, 20 years' time. Let's have a community design that we want.
- **Landowners – understand the impact and legal obligations to you and your children, of signing a contract.** Talk to your neighbours and ask them their intentions. Seek good advice. Remember you are dealing with a developer who is motivated by their own profit, NOT community.
- **Get in touch** with Voice for Walcha, as we look to form subgroups for these project areas, as well a conversation about a community owned project, that is appropriately designed and sized.



THIS WEEKEND



Please note some times are approximates only

Friday 11th March

- 8.30am** Horse Events Commence in Rings 1, 2, 3 and Jumping Arena
- 9.00am** **Main Pavilion Displays Opens**- Wool Fleeces, Fruit and Vegetables, Farm Produce, Photography, Cooking, Preserves, Jams and Jellies, Woodwork, Handicrafts including Hostel, Nursing Home and Day Care Section, Needlework, Knitting and Crochet, Fine Art, School Art Entries and Woodwork.
- 9.30am** Merino Sheep Judging
Junior Merino and Meat Sheep Judging-including Zone 13 Finals
National Recovery and Resilience Agency Marquee Opens
Lions BBQ opens
- 10.30am** Prime Lamb Judging
- 12.00pm** **Horticulture Pavilion & Cut Flower Display Opens**
Bar Opens
- 1.00pm** Junior Beef Cattle Judging
- 3.00pm** Junior Heifer Show
Junior Paraders Judging
- 4.00pm** Junior and Open Six Bar Horse Jump
- 5.30pm** **THE HARRINGTON CIRCUS SHOW AND WHEEL OF STEEL**
- 6.30pm** **Dog Jumping Competition**
- 7.30pm** **THE HARRINGTON CIRCUS SHOW AND WHEEL OF STEEL**
- 7.30pm-8.30pm** Charlie Fittler Band
- 8.30pm** **FIREWORKS**
- 9.00pm-11.00pm** Charlie Fittler Band
- 11.00pm** Bar Closes



Saturday 12th March

- 6.30am** Lions BBQ Opens
- 8.00am** **Yard Dog Trials:** Open followed by Novice. (Local Trial followed by Maiden Sunday 8am)
- 8.00am** Horse Events Commence in Rings 1, 2, 3 and Jumping Arena
Stud Beef Cattle Judging
- 9.00am** Main Pavilion Opens
Horticulture Pavilion & Cut Flower Display Opens
Meat Sheep Judging
Poultry Judging
- 10.00am** **Sports Shear** (Nominations at 9.30am)
Pet Competition
Bar Opens
- 10.30am** **Ag Bike Competition** – Practice from 10.30am
Go to www.walchashow.org.au for full details
- 11.00am** **THE HARRINGTON CIRCUS SHOW AND WHEEL OF STEEL**
- 12.00pm** Poultry Pavilion Opens
- 1.00pm** **THE HARRINGTON CIRCUS SHOW AND WHEEL OF STEEL**
- 2.00pm** **Grand Parade and Official Opening** by Michael Millner, President of Royal Agricultural Society of NSW.
Showgirl Announced
- 3.00pm** **Peanut Scatter**
New Birds Boutique Fashion Parade
- 3.30pm** Horse Sporting Events
- 4.00pm** **THE HARRINGTON CIRCUS SHOW AND WHEEL OF STEEL**
- 5.00pm** **Demolition Derby**
Pavilions Close (Photography closes at 4.30pm)
- 5.30pm** Collection of Items from Pavilion
- 6.00pm-9.00pm** **Speed Shear** (Registration at 5.00pm)
'Walcha versus The World' Speed Shear
- 6.30pm-9.00pm** ***FEATURE EVENT* - Cattle Dog Challenge** (Talk and draw done at 6pm)
- 7.00pm** **THE HARRINGTON CIRCUS SHOW AND WHEEL OF STEEL**
- 11.00pm** Bar Closes



The National Recovery and Resilience Agency are proud to sponsor the 2022 Walcha Show.



Proudly funded by the NSW Government

WALCHA SHOWGROUND

JAMIESON STREET

DERBY STREET

NORTH STREET

MAIN ARENA

SIDESHOWS

TRUCK & FLOAT PARKING

STOCK ENTRANCE

PEDESTRIAN ENTRANCE

VEHICLE ENTRANCE

MAIN PAVILION

POULTRY TRADE

LUNCHEON PAVILION

FLOWERS

CIRCUS

TRADE DISPLAYS

ATM

STUD SHEEP LAMBS

SHEARING BAR

BBQ

CATTLE DOG CHALLENGE

AG BIKES

YARDS

ANNOUNCER RING OFFICE

STABLES

STUD CATTLE

CATTLE SHEDS

YARD DOG TRIALS

THUNDERBOLTS WAY

TOWN CENTRE 800m

© Walcha Show 2022

 Australian Government
National Recovery and Resilience Agency



RubyHills Renewable Energy Project

Ruby Hills Renewable project community update

We would like to provide an amendment to our news letter released **15th Feb 2023**.

The below amendment is in reference to the illustrated project timeline in the previous newsletter.

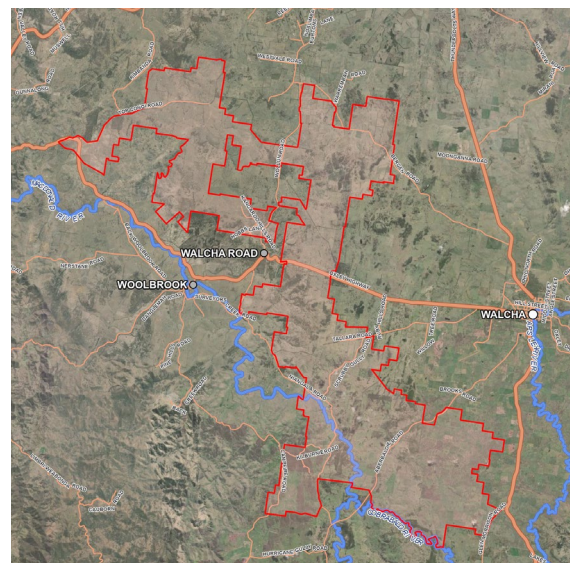
The Ruby Hills project timeline is fully dependent upon State Government upgraded and or new transmission line infrastructure.

Please note; the Ruby Hills timeline will continue to be subject to change until we have a clear understanding of when and where new and or upgraded transmission will occur.

State Government has suggested there will be an announcement regarding proposed NEREZ transmission routes in the latter half of this year.

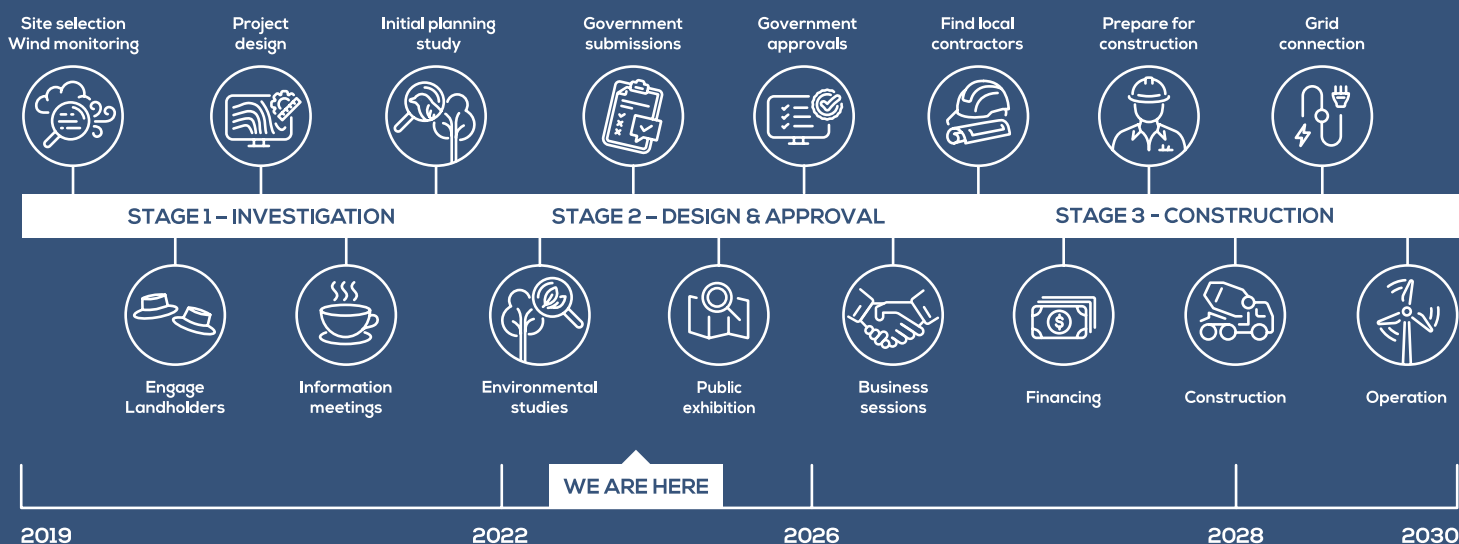
Our project timeline (**below**) will be again shown in our next quarterly newsletter edition and apologise for any concern and or confusion.

If anyone would like to discuss this further please call me on **0402 551 826** or email our enquiries link located on the Walcha Energy (Ruby Hills) website.



Current project footprint and subject to change

Indicative project timeline



Dan Muller
0402 551 826
dan.muller@walchaenergy.com.au

Rubys Hills Renewables is
a WalchaEnergy Project.

Mark Waring
0407 812 053
mark.waring@walchaenergy.com.au

13W Fitzroy Street, Walcha
Project Information and Enquiries:
www.rubyhillswind.com.au

Felicity Hurt (Admin)
Mon/Tues 0419 613 471
felicity.hurt@walchaenergy.com.au

Close games at Seniors Tennis tournament

Walcha District Tennis Association held a very successful tournament last weekend.

Local players were joined by visitors from NSW cities, regions and coast including 21 first time competitors. The 70 players ranged from 30 to 80 years in age. Penny Kraemer (Port Macquarie) and Charles Hempel (Armidale) were the most successful competitors with locals Hyde Thomson and Kris Wall winning their men's doubles division.

The weather was perfect allowing all 32 events to be played with some very thrilling and competitive tennis entertaining the spectators, including some locals who dropped in to 'see how it's done' and catch up with old friends.

Thank you to all the local businesses who provided sponsorship for the tournament, we value your support and generosity.

To all the volunteers who baked, barbequed, filled the canteen roster and prepared the court, your time and energy is invaluable and very much appreciated.



Betty Sweeney Club Treasurer and Life Member receiving a gift from President Hyde Thomson and Secretary Roxana Mathews for her contribution to Tennis in Walcha and for organising the Seniors Tournament over the last 22 years.

Mayoral Column

Eric Noakes, Walcha Mayor

Continued from Page 4

FUNDING

The Honourable Adam Marshall was in town last week to announce what is probably the last of the funding announcements for the current State Government as they have now entered caretaker mode. He brought Paul Toole, the Deputy Premier with him and inspected the now completed off creek storage embankment.

The funding of a sewerage pipeline from John Oxley Oval to connect the oval amenities to our current system, while not being "pretty" will increase the usability and hygiene of this facility. The Golf Club was the recipient of funds to refurbish their clubhouse. An excellent facility in a great setting, these sort of funds are impossible to gain without government assistance.

Passion to engage an Occupational Therapist (OT) to "access screenings, plans and support for kids in need for free" saw Karen Barnes's vision to bring this service to Walcha fully funded for three years. I never realised the role an OT played in helping children who have challenges in some areas until I read the application, and after speaking to an OT realised there was a feeling that Walcha historically sat in no mans' land in relation to this service. Not only is this service coming this year but as stated earlier it is now free. I understand if you contact your education provider if you would like access to this service they can facilitate a way forward.

These projects wrap up the Stronger Country Community Fund that all regional councils have benefited from and have bought so many projects to Walcha over the last 6 years. I hope that whatever party forms government in a couple of weeks they continue the same level of support rural communities have had since I have been on council.

Walcha Show Flower Pavilion

By Phyllis Hoy

Pick your flowers the afternoon before you want them, with a long stem. Put them into a bucket of tepid water with a tablespoon of bleach and a tablespoon of vinegar.

Recut the stem when you enter them. READ your schedule to see which section you want to enter them into. I will be at the Pavilion from 10.00am on Thursday 9 March until 5.30pm. Friday from 7.00am. DON'T BE LATE! Thank you. Phyllis Hoy 0439 310 844.

Pitt Son's REAL ESTATE & LIVESTOCK

SAM PAYNE 0428 667 404 | ANDREW BLOMFIELD 0428 667 402

RON VINCENT 0427 775 821 | TROY DAVEY 0427 157 557

FOR LATEST
UPDATES



6777 2000 | www.pittsons.com.au



'Part Rosewood' offers 166.49ha of productive high rainfall country

Located in the renowned Niangala district with a very strong fertiliser history and excellent water. This property offers a balance of high-performance pasture, native pasture and great shelter for livestock.

- 1000mm rainfall
- Excellent production with improved pasture
- Good water with 10 dams
- Good Access with frontage to Stock Route Road
- Carrying capacity 180 steers
- Very strong fertiliser history

Please contact Andrew Blomfield for further details or to request a copy of the IM.



AuctionsPlus

Tuesday

14 March 1pm

A/C Lisle Pastoral

500 1st x BL Ewe lambs
500 1st x BL Wether lambs

A/C Butler Family Investments

300 1st x BL Ewes 3.5-5.5yrs
450 2nd x PD store lambs

For Private Sale

16 EU Acc Angus Heifers PTIC
to LBW Ben Nevis bulls

Contact Andrew Blomfield

Stop and consider

Check the facts this
State election

elections.nsw.gov.au



what's the goss



with AJ Cross

Talented all-round Sportsperson Shaun McKenna has been selected in a Northern Heat Under 16's Aussie Rules squad to play the Broadbeach Colts on the Gold Coast Saturday 18 March. Both the Northern Heat's Under 16's and 18's players will train together and there is a possibility Shaun could be called into the Senior team also. Go Gettun Shaun.

...

If that isn't going to keep him busy enough Shaun has been named Number One player in the North West Squash Team after winning all his matches at recent trials in Tamworth. Chaden Hawkins also played well at the trials to be picked as the team's reserve player. North West will compete at the NSW Secondary Schools Championships next month which are being held at Coffs Harbour.

...

Back in 1986 after my mother Colleen was cremated, my father IJ had her ashes sprinkled over the Golf Course by pilot David Salter. Now 37 years later Dad has rejoined Mum after my oldest sister Tracey and myself spread his ashes over the first and tenth tees when the Colleen and IJ Cross Memorial was played recently. A big thank you to the Golf Club for all their support especially with the location of seat in memory of Mum and Dad.

...

A few weeks ago Memorial Avenue resident Jo Wicks needed to borrow the lawn mower off her son Sam who resides in Meridian Street up near Hill Street. Jo thought the best way of transporting it would be to walk it between the two abodes, which she did but found Blairs Gully a bit of a challenge. During her adventure local builder Murray Rose drove past and suggested to Jo if she wanted to walk something that bad maybe a dog could be the answer.

...

Then there was the saga of Peter pinching Perc's purse the other day. After sampling a few frothy ones at the Newie recently Peter 'Granite'

Norbury was about to exit the building when he spotted the wallet of his son Cameron lying unattended nearby and decided to teach his young fella a very valuable lesson by taking the wallet with him when he left.

...

Staying at Cameron's place that night 'Granite' asked his son if he could borrow some money off him thinking he would have a bit of trouble lending him some because he had Cameron's wallet. One can only imagine the look on Peter's face when Cameron pulled out his wallet and asked his old man how much money he wanted. On investigation the wallet Peter had picked up was that of Newie Publican Perc Berry which looked identical to Cameron's.

...

Congratulations to Veteran cricketers Peter Mooney and Barry Hoy who are now NSW over 50's Division Three Champions after their New England team won the final of the competition by around 50 runs over Mid North Coast at Lambert Park in Armidale last week. New England defeated Central Coast and Port Jackson on their way to the final where Pete played in all three games claiming a brace of wickets in the last two matches, while Baz played the lead up games but missed the final.

...

Former Walcha Central School teacher Peta Deiderick (nee Baillie) was Marshalling Co-ordinator at the recent Armidale Zone Swimming Carnival where she asked fellow Marshaller Leanne Swain who a certain kid was because he was one of the most polite and well mannered competitors at the carnival. Good on ya Eli Wellings, that's the way to win friends and influence people.

...

A big thank you to Emma Clifton for helping me set up my phone for the Apsley Motors Tipping competition last week. In hindsight I should have got Emma to do my tipping going on the way I went.

...

Best of luck to our two Walcha/Uralla cricket teams when they both play in their major semi final matches this Saturday. The seconds are up against minor premiers Easts at Rolagas No. 1 in Armidale, while here at Peter Fenwicke Oval the thirds take on minor premiers Hillgrove.



LUNCHEON PAVILION

Drop by the Luncheon Pavilion for delicious morning and afternoon tea or lunch on Friday and Saturday at the Show.

Open from 9.00am to 4.00pm ~ everyone welcome.

MORNING/ AFTERNOON TEA

Tea or coffee
and slice
\$5.00
Sandwiches
\$8.00

LUNCH MENU 12.00 – 2.00PM

• Lunch includes dessert and tea/coffee \$20.00 •

Roast pork, roast potatoes with
pear and rocket salad
Chicken and Bacon meatloaf, with roast sweet
potato salad and garden salad
Cottage Pie with broccoli salad and garden salad



FINANCIAL SERVICES

- Rural and Commercial Finance
- Leasing
- Home Loans
- Insurance Premium Funding

KEL PENFOLD

6766 5309 0427 667 118

Cricket

Walcha/Uralla v Guyra Third Grade

Walcha/Uralla

N ENDACOTT not out.....	103
B JEX c H Brazier b T Mitchell	25
D HUNT LBW b H Brazier	4
P MOONEY c C Brennan b L Brown.....	13
G SWILKS not out	58
Total 227. Extras 24. Bowling (overs/maidens/runs/wkts)	
T Foster 4-0-31-0, T Lockyer 1-0-44-0, M Foster 4-1-23-0,	
S Brown 3-1-8-0, T Mitchell 4-0-16-1, H Brazier 3-0-17-1,	
D Foster 4-0-36-0, L Brown 4-0-16-1, C Brennan 3-0-20-0,	
C Lockyer 2-0-11-0.	

Guyra

C LOCKYER C M Tasik b B Hamilton.....	18
S BROWN b J McFarlane	4
T FOSTER c P Mooney b C Mooney.....	28
C BRENNAN c D Hunt b P Mooney.....	7
D MITCHELL b J McFarlane	21
L BROWN c B Hamilton b M Tasik	2
T LOCKYER c B Jex b G Swilkes	0
M FOSTER b C Mooney	2
H BRAZIER not out	1
T MITCHELL b J McFarlane	0
N FOSTER c C Mooney b J McFarlane.....	0
Total 93. Extras 10. Bowling (overs/maidens/runs/wkts)	
J McFarlane 5-0-25-4, B Hamilton 5-1-11-1, C Mooney	
6-0-21-2, P Mooney 4-0-15-1, G Swilkes 4-0-9-1, M Tasik	
3-0-9-1, W Boyd 2-1-3-0.	

Walcha/Uralla v City/UNE Second Grade

City/UNE

P LYE c J Robertson b D Boyd.....	18
A CLEE c A Whackett b S Little	4
M BRYANT c A Whackett b M Harper.....	3
P GILBEY c J Grills b M Harper	0
D TILLBROOK c B Hoy b M Harper.....	0
J FINLAY b A Singh	1
J CLEE c R Grewal b J Grills	2
C HOKIN b R Grewal	7
L McDONALD not out	0
Total 48. Extras 13. Bowling (overs/maidens/runs/wkts)	
S Little 3-0-11-1, M Harper 6-2-10-3, A Singh 5-3-2-1, R	
Grewal 6-0-17-1, J Grills 2-1-3-1, D Boyd 2-0-2-1.	

Walcha/Uralla

R GREWAL b P Gilbey	4
E BLOMFELD LBW P Gilbey	2
M HARPER b D Tillbrook.....	21
A SINGH not out	17
S LITTLE not out	3
Total 51. Extras 4. Bowling (overs/maidens/runs/wkts)	
P Gilbey 4-0-16-2, C Hokin 2-0-12-0, D Tillbrook 3.3-0-9-1,	
J Clee 2-0-14-0.	

Walcha/Uralla won both their final competition matches of the Armidale and District Cricket in Armidale last Saturday to finish second on both the Second and Third Grade pointscore ladders.

In Second Grade at Bellevue Oval the visitors sent Armidale City/UNE into bat before bundling the nine player outfit out for 48 runs. Opener Matt Harper did most of the early damage snaring 3/10 off his six overs which include 3/0 in his third over. All Walcha/Uralla trundlers were successful with opener Sinclair Little, Harkirat Sing, Randy Grewal, Jay Grills and Daniel Boyd all claiming a scalp each.

In reply the visitors were in their 12th over when they

racked up the required runs of which 'Player of the Match' Harper contributed 21 runs and Singh 17 runs not out.

A century to Veteran opener Nick Endacott paved the way for the Third Grade team to defeat Guyra by 134 runs.

Endacott finished 103 not out which included 11 boundaries and he was involved in a 123 unbeaten fourth wicket partnership with Glen Swilks who hit eight boundaries on his way to an unconquered 58 runs.

Guyra fell well short of their target of 227 when they were dismissed for 93. Opener Josh McFarlane grabbed 3/0 in his last over to finish with 4/25, Cameron Mooney picked up 2/21 while Ben Hamilton, Matt Tasik, Peter Mooney and Swilks all took a wicket each.

Tennis

Round 4 of the Summer Comp was played out on Tues 28th Feb: Popyrin: D Sweeney, J Jones, J Fletcher and D Bird defeated Tomljanovic: D A Locke, T Whillock (F), B Konneron and R Mathews 33 to 15.

Ebdon: H Thomson, E Wauch (F), K Smith and M Luchich defeated Saunders: M Lockyer, T Gibson (F), A Pendlebury and T Bird 36 to 7.

Kokkinaakas: E Blomfield, C Bruce, M Bird and M Wall defeated Gavrilova: D Clark, J Burgess, G Wall and A Tozer 31 to 22. Well done to Ebdon who won all their six sets achieving a max score of 36.

Next Club Meeting will be 13th Mar all members are welcome to attend. See you all at the net soon.

Bowls

Dads Army: Everything was ready for a great afternoon, including the weather BUT where are the big Yellow Bowls. Two games triples were played on Thursday afternoon with Tony Asmus, Matt Andrews and John Watts scoring two shots on the last end to defeat John McCormack and Mick Bullen who played twice 13 - 11.

In the second game Peter Hayes, Eric O'Keefe and Warwick Hogan defeated Noel Goodwin, Geoff Salt and Neil Dark 25 - 15 after leading 19 - 4 at the halfway point of the game. Tony's team won the chooks and the raffles were won by Max Holstein and Peter Hayes.

The mystery of the big "Yellow Bowls" was found in the boot of his wife's car in Armidale.

Ladies Bowls

Last Thursday a game of three bowl triples was played where Pat Laurie, Janet Goodwin with Wendy Moore & Lyn Burnell sharing the position, had a win against Esther Hunt, Marg Tickle and Janice Rizzi 16-13.

Don't forget to put your name on the sheets to play in the Club Championships by 23 March.

Flippers

Last week the Swimming Club conducted their handicap competition where swimmers start at different times in each race depending on their times throughout the season.

Handicap winner for 2022/23 was a three way split between Charlie Makeham (Tadpoles), Charlie Lisle (Frogs) and Sophie Ranger (Crocodiles) who won all three of their races on the day.

Outside the three overall winners, group winners were Benji Provost (Tadpoles), Will Lisle (Frogs), Bree Smolders and Lee Blomfield (Turtles), George Blake (Crocodiles) and Nathan Ross (Dolphins).

The opening round of the Club Championships were scheduled for yesterday with 50 metre and 100 metre freestyle, as well as backstroke events on the program.

At the 19th

Last Sunday a Stableford round was played for a trophy donated by Andrew Robertson where Lachie Fletcher survived a three way countback with Doug McDonald and Ruth Fletcher before he was declared the winner after all three players had registered 38 points each.

The remaining sweepstakes went to Barry Hoad 36, Col Berry 35, Cheryl McDonald 34, Don Brookes and Pauline Carter 33, Drew Bird 32, Margaret Davidson 31, Jed Wittig and Simone Sweeney 30 points each.

Sharpest Shooters at the pins were visitor Sue Gilchrist (3) and Michael Stackman (18).

In matchplay Barry Hoad defeated Mark Hogan 6 up, Jed Wittig downed Lee Fletcher 2 and 1 while Doug McDonald got the job done 7 and 5 against Simeon Cross.

Last Saturday 'Mollydooker' Allan Laurie won the Weekly 9-hole event after he racked up 18 Stableford points whereas the runner up was a three way count back between Ruth Fletcher, Sue Partridge and Margaret Higgins who all scored 17 points each.

No NTP on 3.

This Sunday is a Stroke Medal Round for a prize supplied by Drew Bird followed a week later by the opening round of the Mens Club Championships to be played in conjunction with Captains Trophy.

Ladies Golf

We played a Graham Betts Stableford qualifier on Wednesday 22nd for a trophy donated by Betty Borthwick. The winner with 35 points was Sue Partridge, with sweepstakes going to Polly Locke 34 points, Julie Olrich 33 points, Cark Street 32 points and Penny King also with 32. Polly Locke also took out NTP on Hole 3, and Prue Morgan had the best shot on Hole 16.

Our beginners had a 9 Hole comp and it was Maddie Lance who came in the winner.

Wednesday of last week we played stroke, putting and monthly mug, along with the first Medal round for Sue Partridge's trophy, our treasurer.

Cark Street was the winner with a 65 nett. Sue also gave a prize for the Front and Back nines. Donna Martin won the Front 9 with 33, and Lorraine Walshe the Back 9 also with 33.

The sweepstakes were taken out by Ruth Fletcher with 69 nett, Cheryl McDonald with 70 nett, and Simone Sweeney also with a 70 nett.

NTP on the third hole was Cheryl McDonald, and the second shot on 18 went to the trophy giver, Sue Partridge. The monthly mugs were won by Donna Martin, 68 - Division 1, Cark Street, 65 - Division 2 and Ruth Fletcher, 69 - Division 3.

The putting was won by Simone Sweeney with a mere 21 putts.

Our winner in the beginners group was Bec Hall.

Today we are playing par for Sheila Faulkner's trophy.



Positions Vacant

HealthShare NSW



Food and Cleaning

Department: HealthShare NSW
Location: Walcha Multi Purpose Service, Walcha
Classification: Hospital Assistant Grade 2
Employment Type: Permanent Part-Time
Hours: 20 hours per week
Remuneration: \$26.30 per hour plus 10.5% superannuation
Enquiries: Scott Tulley via scott.tulley@health.nsw.gov.au
Closing Date: Midnight, Monday 13 March 2023

To apply visit jobs.health.nsw.gov.au/healthshare Search for Job Reference Number: **REQ380389**

Tourism Officer Part Time



Walcha Council is currently recruiting for a Tourism Officer to join the team. The key focus of this position is to provide support and assistance to visitors to our region. They will assist the Coordinator with the planning and delivery of all functions of the tourism area.

This position is permanent part-time (15hours/week) and is a Grade 3 in Council's salary structure. Days of work to be negotiated with the successful applicant.

For further information and to apply, visit Council's website www.walcha.nsw.gov.au/council/positions-vacant.aspx
 Applications close 9.00am Monday 27 March 2023.

Phil Hood
 Interim General Manager

MOUNTAIN MOTORS

Trades Person/Qualified Mechanic

Looking for someone to help out in the workshop. Either a trades person, tyre fitter, qualified mechanic or happy to learn.

Position is full time with flexible hours available and a great work environment.

Please phone the Office on 67772542 for any further information or apply by email (admin@mountainmotors.com.au) or mail to Mountain Motors 18N Derby Street, Walcha.

Applications close 17/3/23

Meetings

Walcha Golf Club AGM at the Clubhouse 19 March at 9am.

AMAROO LOCAL ABORIGINAL LAND COUNCIL

Notice of Members Meeting
 Date: Friday 24th March
 Time: 12:30 PM
 Venue: 'Camp Kitchen' Summervale Village
AGENDA
 1. Welcome
 2. Apologies
 3. Minutes of previous members meeting
 4. Financial Reports
 5. Memberships
 6. Roads To Home Community Consultation
 Enquiries can be directed to the Chairperson, Alena Stackman via phone: (02) 6777 1100
 or email: office@amaroolalc.com.au during business hours.

Found

Ladies reading glasses found at truck show. Thin Lilac frame. Contact 0458 669 804

Lost

Akubra Hat (Sentimental) - Lost near Mill Hole area. Ph 0438 835 613

Thank You

Walcha District Tennis Association would like to thank local businesses for sponsoring the 2023 Walcha Seniors Tennis Tournament. Cafe Graze, Marchant Bros, McDonald Gas, Mountain Motors, New England Hotel Motel, Parsons Mechanical Repairs, Pitt Son's, Walcha Bowling Club, Walcha Commercial Hotel, Walcha Law Solicitors and Walcha Post Office.

Public Notices

DR GENEVIEVE FREER
 Phone 6777 2088 0429 668 583

Church Service Woolbrook Church, 2pm, this Sunday. Info Graham Barnes 677 2539.

church notices



ANGLICAN Sunday 12th March, 9.30am
 Harvest Festival Family Service and Kids Club in the hall. All welcome. Phone 6777 2543 or email: walchaanglican@gmail.com

PRESBYTERIAN Walcha Sunday 9.30am.
 Woolbrook 2pm. Phone 6777 2539.

CATHOLIC Sunday 10:00am Mass.

Walcha Historical Society Wine Tasting Evening

Walcha Taphouse
17th March 2023 5pm-7pm
 Tickets are now on sale at the Taphouse
 Cost \$15 p/person
 There is a limit of 40 people so get in now.
 Just in time to stock up before Easter.
 The Wines on offer are specially selected and are not available at IGA or Dan Murphy's.
 Cheese and nibbles will be served, come join the fun and discover new tipples to tempt your tastebuds.



WALCHA SHOW GATE ROSTER Friday 10th March

<u>Derby Street</u>	<u>North Street</u>
8-10am G & P Fairweather	8-10am Bevis Hoy
10am-12pm Noel Breeze	10am-12pm George Lawrence
12-2pm I & J Olrich	12-2pm Dennis Wall
2-4pm David Dunn	2-4pm Don Kermode
4-6pm Donald McHattan	4-6pm John Busby
6-8pm N Henry	6-8pm Ian Elys

Saturday 11th March

<u>Derby Street</u>	<u>North Street</u>
8-10am D & M Carter	8-10am Bevis Hoy
10am-12pm Commonwealth Bank staff	10am-12pm George Lawrence
12-2pm J & H Mansfield	12-2pm Stephen Bath
2-4pm H Henry & S Hinton	2-4pm John Busby
4-6pm N Henry	4-6pm David Dunn

For Sale

White Suffolk Rams available. Phone Angus 0427 787 332.

DJ'S Firewood - Best wood in the district. Wood that actually burns. Delivery days - All day Saturday and Sunday afternoon OR pickup from Niangala Sat 1-4pm. Phone 0427 335 631 or 6769 2395.

Layer pullets. All breeds. 20 wks. Delivered Friday 31/3/23. Phone Jim 0428 194 105



Andrew: 0427 549 748
Toni: 0421 972 354

STORAGE CENTRE WALCHA

20' Containers available for rent \$35 pw + GST
Secure Undercover parking for cars,
vans etc \$15 pw + GST

ANGUS 0427 787 332

CHIROPRACTOR

K Samantha Goor

B.Sc. Anatomy (NSW) M Chiroprac (Macq)

Tuesday & Friday from 9.00am

6777 1340



Sophie Thomson | James Levingston

Conveyancing | Power of Attorneys
Wills | Estates | Traffic Offences

Local Firm - over 70yrs in the Community

02 6777 2066 info@walchalaw.com.au
walchalaw.com.au

INCORPORATING PATTERSON BYFIELD & BRYEN

ENGINEERING

John Wall

• Stock floats • Feeders • Sheep & cattle
yards • Steel framed sheds & mobile welding

6778 0588 • 0428 778 087



Rural Fencing Contractor

Matt Klein 0499 607 707

10 years experience ♦ Walcha Based



CORPORATE IDENTITY & LOGO DESIGN
BRAND GUIDELINES • SIGNS • BOOKS & MAGAZINES
ANNUAL REPORTS • CATALOGUES • BUSINESS CARDS

0418 281 489 • OSCARWAUGH@GMAIL.COM

New England IT

ONSITE COMPUTER SERVICE + SALES

Tim Sutton **0414 874 523**

Tree lopping
Tree removal
Truck & chipper
Bobcat
Post hole digger
Trencher
Woolshed cleaning
Stockyard cleaning



Scott Kermode

0427 100 889

treetopservices@bigpond.com



PATRICK STACE - WALCHA

Mob. 0428 780 077 Ph. 6778 0595



CURTIS

MOWERS & SMALL ENGINES



- Mowers • Ride-ons
- Pumps • Chainsaws
- Whipper snippers
- Chain sharpening
- Bar dressing

SELLING New 30 & 40 Tonne Petrol Hydraulic
WOOD SPLITTERS from \$3,100 delivered
• Chainsaw chain •

JAMES - 0488 020 762 (7 Days)

SELF STORAGE

NORTH STREET - WALCHA
VARIOUS SIZED SHEDS
SECURITY FENCED

67773899 0428 653 307



CASH
FOR
CARS & TRUCKS
ANY CONDITION

TRUSTED LOCAL OPERATOR
FOR OVER 15 YEARS

Mark **0412 310 650**

A pure taste with little waste!
PURE RAIN TANK CLEANERS



0428 320 985

James Patterson-Kane



DREW BIRD ELECTRICAL

Call 0456 185 304

RURAL. DOMESTIC. COMMERCIAL.
drewbirdelectrical@gmail.com Lic No.400883C

A G W RURAL CONTRACTING

GPS Equipped boom spraying

Andrew Wauch **0427 549 748**

Nick Moore PLUMBING & EXCAVATION SERVICES



Highly qualified and
experienced plumber
All aspects of Plumbing
and Gas Fitting
Wood heater installation
Roofing and Guttering
Gold Licence No 59555C

Nick 0418 691 306

nickmoore203@yahoo.com.au

Katy **0422 034 660**

DISCLAIMER LETTERS TO THE EDITOR are submitted on the condition that The Walcha Telecottage as the publisher of The Apsley Advocate may edit and has the right to, and license third parties to reproduce in electronic form and communicate these letters. They are published at the discretion of the Editor and Board. The Apsley Advocate is printed by The Walcha Telecottage, PO Box 116 Walcha NSW 2354. Phone 6777 1111 Fax 6777 1112. The Walcha Technology Co Operative Limited, the Editor and Staff of this Newspaper have published any article here-in in good faith and bear no responsibility in respect to the accuracy of the information contained in such article. Any person or persons publishing material in this Newspaper do so in the knowledge that they shall personally accept any responsibility for the accuracy and other correctness of such articles and also accept full responsibility for the legal consequences if it be found that the article contains any inaccuracies in the contents of any such articles. **DEADLINE MONDAY 4.30PM**
Editor: Anthea Macpherson. Advertising and Sport: Rosalie Gibson, Megan Scrivener and Emily Scrivener.

Marchant Est. 2000 BROS.



A FULL RANGE OF AFFORDABLE TRANSPORT & EARTHMOVING
COMMERCIAL WATER CARTING
Dam construction/maintenance, stick raking, road building,
site prep, pipe laying and all timber work.

Check out our website for the full range of machinery,
attachments and services available



Earthmoving and Heavy Haulage Transport
Jason 0427 490 487
02 6777 2024 marchantbros@bigpond.com
www.marchantbros.com.au

FOR ALL YOUR EARTHWORKS TRANSPORT AND ELECTRICAL NEEDS

ALL ASPECTS OF RURAL, COMMERCIAL & CIVIL WORKS



- Freight & Transport • Machinery Float • Stick Raking
- Road construction and maintenance • Trenching
- General Earthworks • Drilling • Mulching
- Dam maintenance and construction
- Erosion Control • Site Preparation • Electrical Works

Ian Notley 04188 29188 • Mark Notley 0422 637 686
www.eteservices.com.au



WALCHA BOWLING & RECREATION CLUB

Mon – Wed 4.00pm – Close

Thursday 9 12.00pm – Close

Ladies bowls 9am for 9.30am start
Social bowls 1.00pm

Friday 10 2.00pm – Close

2.00pm Bingo

6.00pm Bistro

- Moroccan taco boats
- Whole baby barramundi grilled
- Creamy chicken tetrazzini
- Normal menu available, takeaway and delicious dessert.

6.00pm Tickets available for raffles –
meat and veg trays

7.30pm Free Bingo

8.00pm Raffles drawn & Members Draw

Saturday 11 11.00am – Close

6:00pm Bistro

4-6pm HAPPY HOUR

Sunday 12 11.00am – Close

12.00pm Bistro open

Children U/10 kids meal free with an
adult order

12.00pm Meat, fruit and veg raffles

12-2pm HAPPY HOUR

ST PAT'S DAY

FRI – 17 MARCH - 6PM

IRISH – FOOD,
MUSIC & DRINKS

MEMBERS DRAW \$50

YOU MUST BE A MEMBER FOR
2023/2024 TO BE ELIGIBLE TO WIN

TOM'S COCKTAIL
Grasshopper



Do you live in Walcha Shire? If so you **MUST** be a member to enter the Club
Social Membership \$15 – Full Membership \$105. PHONE 6777 2077

LINMAC ENGINEERING

IF YOU NEED IT – We make it!

CUSTOM TRAYS AND TIPPERS



- Customer consultations to make sure we build to YOUR individual specifications
- Sandblasted and powdercoated
- Toolboxes, timber floors, tipper trays, water tanks ... whatever you need!

AUTHORISED HUSQVARNA DEALER



Check out our new facebook page:
Linmac Engineering Walcha

211N Pakington Street WALCHA
Phone 6777 2822 Email enquiries@linmacengineering.com.au