

# THE APSLEY Advocate

CIRCULATION 1810 P 02 6777 1111 F 02 6777 1112 wtc@walchatelecottage.com.au walchatelecottage.com.au

8 February 2023

**LINTON**  
Poll Dorsets  
\$uperBorder\$

## ON PROPERTY RAM SALE

Tuesday 21st February  
1.00pm

**George Carter**  
0447 272 371

**Trish & Brian Carter**  
0428 775 857

**Selling Agents**  
Nutrien Boultons Walcha

**telecottage**  
WALCHA

## Design, print and secretarial services

- Photocopying
- Laminating
- Business Cards
- Stationery
- Invoice/receipt books
- Labels
- Sale Catalogues
- Brochures
- Resumes
- Cards
- Stamps  
and more.

**Phone 6777 1111**

wtc@walchatelecottage.com.au



# Welcome to big school!

Last week marked the beginning of the school journey for these Walcha students. It was a happy start with lots of smiles and laughter coming from their classrooms.

*St Patrick's Kindergarten pictured above from left: Edwina Lisle, Harper Partridge, Charlotte Curtis, Mackenzie Gollan, Jack Provost, Campbell Laurie, Reid Withers and Levi Oakley.*



*Walcha Central School, back row from left: Coen, Finn, Riley, Billy, Leo, Dominic, Brae, Benjamin, Miss Caitlin Harris. Front from left: Reginald, Bronte, Violet, Iyla-Grace, Trinity, Hadley, Frederic, Riley. Absent: Jarell and Zaije.*



**NEW**

**DECTOMAX V**  
doramectin and levamisole injection

## Dectomax V Injectable Parasiticide 500ml

In stock and available at WVS

6 Aberbaldie Road Walcha  
Phone 6777 2588 [www.wvs.com.au](http://www.wvs.com.au)

**WVS**  
WALCHA VETERINARY SUPPLIES



# OK EARTHMOVING

## Specialising in road construction & maintenance

• Stickraking • Dam building • Erosion works



Bulldozers • Excavator • Tip-truck • Vibrating Roller

**PH 6777 7430 FAX 6777 7448**

**PETER O'KEEFE: 0429 944 821**



**BROOKLYN  
QUARRY**

### Positions Available:

**Join our Team.  
Its a rocking  
workplace!!**

**Looking for  
Excavator  
operators and  
Truck Drivers**

**\$35-50/hr**

***We are back for 2023 and are  
taking orders today!***

***Our Quarry Products are perfect  
for rural roads that have been  
waiting for you to fix.***

***We also supply for highways,  
construction jobs, gravel roads,  
unspec and spec materials.***

***We have a variety of products  
that will suit your every need:  
big rocks, small rocks,  
of any size!***

***Prompt local delivery to you***

***Contact us today!***

***Have a rock solid day!***

**SCOTT@BROOKLYNQUARRY.COM.AU**

**0434 011 570**

**1643 OXLEY HWY, WALCHA RD. NSW  
(BY APPOINTMENT ONLY)**

**WWW.BROOKLYNQUARRY.COM.AU**

## around the traps



By SIMON NEWTON

The lawn mowers were out in force on the weekend after some very good general rain throughout the district last week. Twenty five to fifty millimetres fell over much of the area which was a nice backup to some isolated storms from the week before. The week ahead looks dry but the chance of storms heading into next week looks promising again.

The Reserve Bank of Australia is set to meet on Tuesday for its first meeting for 2023 and the word around the big banks is that they will increase the interest rate once again. I'm guessing that this was inevitable considering just how much people spent on Christmas, as they try to stop inflation. It's a fine line though as these rate rises will push people over the edge and risk plunging Australia into a recession. Metropolitan areas have seen a downturn in the residential housing market since the rate rises and I'm guessing the rural property markets may also come under some added pressure. I think rural property owners could absorb the interest rate rises considering the lift in equity in their asset, but now the beef and sheep markets have had 30% of their value wiped off since November, this will make it harder to borrow money to purchase more land. I don't believe grazing country will get any cheaper but we might see it plateau. Corporate companies will still see a good return on investment in rural land but smaller grazing families who have looked to expand might take a more cautious approach and wait to see how these livestock markets evolve.

3500 cattle were yarded in the annual Nutrien Classic cattle sale last Wednesday in what was described from one buyer as, there was something there for everyone. The market was firm to dearer on the better cattle with EU Angus feeder steers topping at \$2190, 445c/kg while strong competition saw yearling XB steers sell over \$1600, ready to join EU Angus heifers sold to \$1810 while Angus heifers PTIC to Wagyu sold to a top at \$3350. An excellent run of cows and calves sold to a top of \$3900. The annual cattle sale was held in conjunction with the Nutrien Classic Horse sale which blew away all expectations. 523 out of 582 horses sold to an average of \$32,681 topping at \$400,000 for a mare. The top priced stallion sold to \$300,000 and a gelding fetched \$110,000 and I must say a huge congratulations to a few of the local breeders who had a great weekend with their horses. Horses went all over Australia.

Talking with a few people from the Central West over the weekend and they stated parts of the region had received good falls of rain but they are still looking for follow up rain before they really dive into some store lambs. The other factor holding lamb fattening producers back out of the market is that there is no forward contract this year which means the uncertainty is too much to gamble on considering the margins for fattening purchased lambs are so tight. Last week's rain did improve the lamb market to a small extent with lambs selling online for a further \$5/hd compared to the previous week.

Tamworth yarded 1465 on Monday which saw a firm to slightly dearer market after some localised rainfall in the previous week. Light restocking weaners met stronger demand with Angus steers selling to \$514c for 260kg, XB feeder cattle strs sold to 393c/kg while the Angus strs topped at 414c/kg. Heavy kill cattle sold to 330c/kg for 645kg while cows topped at 296c/kg. Tamworth yarded 3500 sheep and lambs with mostly all categories selling to dearer trends except for store lambs. Restocking store lambs met reduced competition due to the lack of lamb finishing feed, selling from \$70-\$95, kill lambs were in shorter supply with the best of the heavy trades selling to \$5/hd dearer selling from \$140-170, while heavy export lambs topped at \$218. Mutton gained some ground with heavy XB selling to a top of \$149 while light merino mutton sold from \$50-75hd.

The annual Walcha Races were held on Friday and Saturday and judging by the bar takings it seems everyone was out to have a great time. Once again the local races were a hit with people travelling from near and far to enjoy a day out at the races with the town a buzz all weekend. Congratulations to the all the organisers and the committee for such a great event.





- 👍 To the absolutely beautiful meals at the Commercial on Sunday night and the great service.
- 👍 To the high school kids who helped the younger teams at touch football. Great role models and much appreciated.
- 👍 A big thank you to the Walcha Sports Club for their Colts and Fillies dinner after the Races.
- 👍 To Tim Sutton for fabulous help with all technology.
- 👍 To our town's amazing gardens. Walcha looked picturesque for both Australia Day and the Races.
- 👍 Congratulations to Jim Nivison and his committee who put on an awesome race meeting, and to the Ladies Social Committee for organising a fabulous Marquee with wonderful food and a great atmosphere. We had a great day.
- 👍 A big thumbs up to the girls at the Telecottage for the very informative Race Books for the races on Friday and Saturday. A big job well done.

**Contributions will be received in person, by phone or email and must be accompanied by your name and contact details. They will be printed at the discretion of the editor.**

# Kevin honoured with Life Membership

An emotional Kevin Ferrier accepted Life Membership of the Walcha Jockey Club on Friday at the 2023 Race Carnival.

The Club's secretary for an astounding 31 years, Kevin knows the race track inside out. "Kevin has put his heart and soul into the Walcha Jockey Club for an incredibly long period of time," Club Chairman Jim Nivison said in presenting Kevin with his life membership.

"He has worked closely with Racing NSW to navigate the Club through the many changes that have occurred during amalgamation of the administration of racing," Jim commented.

Horse racing commentator and form analyst for SKY Racing, Gary Kliese has worked with Kevin for 24 years and also paid tribute to the tremendous work he has done for the Club as Secretary.

In presenting the Life Membership badge to Kevin, Jim commented, "The Walcha Jockey Club is in a very strong financial position which a lot of country clubs are not. Kevin's contribution as secretary has played a major role in the prosperity of the Club."



*Kevin is congratulated by WJC Chairman Jim Nivison and SKY Racing's Gary Kliese*

**Nutrien**  
Boulton's

**Stock and Property Watch**

[www.nutrienharcourts.com.au](http://www.nutrienharcourts.com.au)

## Lifestyle Opportunity



**Near new home and acres with elevated position, spectacular views and just minutes from the centre of town.**

- Approx. 2.558ha / 6.32 ac
- Connected to town water and power
- Lovely brick veneer home, verandahs on all sides
- Open plan modern kitchen with living area
- Separate dining room and lounge room
- Three good sized bedrooms, main with an ensuite
- Generous sized main bathroom
- An eco friendly reed bed septic system requiring very little maintenance

Peaceful rural setting and spectacular rural views to the north and east.

Bruce Rutherford ..... 0428 660 328

**POA**



**LINTON**  
Poll Dorsets  
SuperBorder\$

## Upcoming Ram Sale

*Linton Poll Dorset  
and Super Border Ram Sale*

**Tuesday 21 February**

*Inspections from 10.00am*

For more information contact:

Mat Larkings ..... 0427 002 427

Miles Archdale ..... 0428 660 326



45ft flat top • 45ft single deck cattle float • 26mtr B Double  
19mtr mini B Double • Low Loader available for hire



**BRIAN**  
**Smith**  
**TIMBER**  
**TRANSPORT**

Call us for  
your large  
Transport  
needs

**WALCHA**  
**02 67772126**

**Bonnie Smith 0429 772 077**  
**Brian Smith 0427 780 216**

# THE FRUIT SHOP

## THE RUMOURS ARE TRUE... WE ARE EXPANDING INTO NEXT DOOR

To make this expansion happen we need to  
make a lot of noise & even more dust  
– we simply cannot trade through that.

We will also be redoing all of our floors,  
which is a huge, messy job!

To make this all happen we will be  
**CLOSED from Monday 13th February and  
reopening Tuesday 21st February.**

**50% off all fresh produce**  
**THIS Saturday 7 – 1pm**

# Mayoral Column

Eric Noakes, Walcha Mayor



As this is my first column for 2023 it's amazing that it is the second week of February already. Council has kicked into gear with a lot happening and a feast of projects to deliver, and as with most sectors of the economy both internal and external resourcing stretched. Speaking to the Director of Infrastructure on Friday he mentioned that we are attempting to deliver around \$41m worth of projects over the ensuing period. It would be great to put a date instead of saying "ensuing period", but labour and materials make this difficult. I have been reliably informed that this figure will increase over the coming months with more grants coming our way.

Putting the difficulties in delivery aside it is an opportunistic time to analyse that figure. A minimum of \$41m for a council the size of Walcha offers so much opportunity to build, update and manage our capital assets for the benefit of the community, not only in the short term but the medium and long term. From my research and memory this figure far exceeds any funding this council has ever secured and managed, and while some of it is opportunistic much of the credit lies at the feet of our Infrastructure staff who recognise opportunities and through diligence successfully obtain grants. Saying this, funding bodies do not hand out cash without checking councils are working within their community and legislative expectations and that all strategies that sit under the Community Strategic Plan (CSP-YOUR Plan) are aligned and functional. Under our current GM and Directors there has been a concerted and coordinated approach to this outcome. While these plans and strategies (Delivery, Long Term Financial, Workforce and Asset Management) still have some input to finalise them, the formulation and linking of these plans is not only what Government require but more importantly give our community faith in our future. Council in some ways is just another business, while operating in a much more legislated and public environment, we must look long term with a view both to asset management and financial sustainability. All councils find this an extremely fine line to tread but it is constantly pointed out to me that if we don't have our paperwork in order grants are harder to access. I understand the frustration of the community that promised projects have not been delivered, and with inflation adding extra costs the frustration is felt by council but we cannot deliver projects if we cannot find contractors.

### SRV APPLICATION

Last week Walcha Council submitted our application for a special rate variation (SRV) to the Independent Pricing and Regulatory Tribunal (IPART). You will recall council engaged heavily with the community in respect to this step in September and October last year. All documentation, including videos, reasoning and long term financial benefits are still on council's website and are easily sourced.

To briefly reiterate the reasoning and process behind this I will cover the main points again.

#### Reason

- Council was strongly advised to do this immediately a decade ago to arrest this decline in sustainability.
- The current issue has been clearly identified with the arrival of our current GM, and under his guidance council have taken the appropriate steps to rectify the problem.
- We have only asked for enough to "balance the books".
- This SRV will not increase service levels.

#### Process

- Three internationally renowned professors in this area confirmed our council was not and has not been for a long time financially sustainable and our necessity to apply for an SRV.
- Public engagement was thorough, informative and encouraged input.
- The advice was for 3 increments totalling 57.74% over 3 years.
- In May 2023 IPART will announce its decision to the public.

**Continued on next page**



# Mayoral Column

Eric Noakes, Walcha Mayor

## SRV APPLICATION (cont.)

It's not an enviable task to lead the council and community through this process but I am proud of the way Councillors, staff and the community have rallied to get to this point.

- Submissions on this SRV can be made to IPART.

The question may be asked in relation to the first part of this column as to why with so much grant funding that an SRV is required. Grant funding is generally directed at a specific project, or purpose and cannot be used to provide many of the services that council is required to deliver.

## BUSY SEASON

The first quarter of the year sees Walcha buzzing with events. The campdraft and races were blessed with excellent weather and with the Walcha Truck and Machinery Show on 18/19 of this month will highlight machinery that was the backbone of building Walcha as a rich and diverse farming area. Congratulations to the team organising the show and good luck to its success. Something there for everyone I believe. Following in mid March is the Walcha Agricultural Show, an event that needs no introduction due to its status as by far the best show in the north. A large and dedicated committee bring this event together and not only showcases the best produce and livestock but shows what a community can do when we pull together. Good luck for a successful event.

# Join in Youth Group fun

Walcha youth who are in school Years 5 and 6, and high school years are invited to come along and check out Youth Group. Every Saturday night we meet up at the Presbyterian Church from 5pm to 7pm. We spend time playing lots of games, trying out fun challenges and other activities such as scavenger hunts, campfires, cooking and mega nights. Each week we also look at a passage from the Bible and eat dinner together.

Youth Group is FREE to come along to. For more information contact Graham and Karen Barnes 6777 2539.

## Mini Flower Show coming up

### From Phyllis Hoy

We are holding a "Mini Flower" Show on Saturday 18 February at the Showground in the Horticulture Pavilion. Please bring a flower/s according to the schedule. Check the webpage of Walcha Show for the classes.

The day will run from 10am – 2pm and will explain to you what a Judge looks for and showing you how to display your exhibit.

If you are interested, please be in touch with me 0439 310 844 or email [phylhoy@gmail.com](mailto:phylhoy@gmail.com). Bring a friend and learn together. The RSVP 13 February.



- Uniquely Soft & Stylish
- No Mulesing
- High Tops Low Culls
- Top Worm Resistance
- High Profitability
- Excellent Value

## ON-PROPERTY RAM SALE

### 62 RAMS

**THURS 9 FEB 2023 - 1PM**

754 Table Top Road, Walcha

**ED & KAREN BLOMFIELD 0409 608 697**

**ROB & KATRINA BLOMFIELD 0409 779 189**

Email: [ed.karen@karori.com.au](mailto:ed.karen@karori.com.au) Email: [katrina@karori.com.au](mailto:katrina@karori.com.au)

**[www.karori.com.au](http://www.karori.com.au)**



**Winterbourne  
Wind**

**Thank you**



**WinterbourneWind would like to thank community members and organisations who made a submission on the Winterbourne Wind Farm Environmental Impact Statement.**

We are currently reviewing the feedback received through the submissions, and will provide a Submissions Report to the Department of Planning and Environment in response to the issues raised in these submissions.

Get in touch via our website  
**[www.winterbournewindfarm.com.au](http://www.winterbournewindfarm.com.au)**  
or follow us on Facebook.

**Phone:** 1800 252 040 (free call)

**Website:** [www.winterbournewindfarm.com.au](http://www.winterbournewindfarm.com.au)

**Email:** [info@ winterbournewindfarm.com.au](mailto:info@winterbournewindfarm.com.au)



# Kiwi wins Betts Transport foot race

By A.J. Cross

The 23rd running of the annual Walcha Jockey Club foot race took place last Saturday where Braden Kommeren braced the tape first in a time of 6 minutes and 12 seconds.

He is from the North Island of New Zealand and is currently working as a station hand at Yerrawun which is expected to be his home for at least the next 12 months.

Hot on his heels was runner up Jack Bullen in 6:14, just in front of his brother Tom 6:32, followed by ladies winner Kirra Lee Murphy 6:43.

Unfortunately there were conflicting race starting times and Kirra-Lee was the only lady entrant.

Next best in the mens event was Henry Williams 6:45, followed by Sam Payne 6:51, co-organiser Steven Eveleigh 6:56, Graeme Wall 7:13, Connor Sweeney 7:53 and co-race organiser Lance Partridge 10:47.

The foot race was sponsored by Betts Transport and was called by Kevin Creighton who suggested he had just called two races at once – his first and last.



Far left: Foot race winner Braden Kommeren (centre) with Jack and Tom Bullen. Left: Ladies winner Kirra-Lee Murphy



**Editor's note:** Sincere apologies for the confusion over the foot race starting time in the Advocate last week. Unfortunately race times are not published by Racing NSW before we go to print on Tuesdays.

**Pitt Son's** REAL ESTATE & LIVESTOCK

SAM PAYNE 0428 667 404 | ANDREW BLOMFIELD 0428 667 402

RON VINCENT 0427 775 821 | TROY DAVEY 0427 157 557

FOR LATEST UPDATES



6777 2000 | [www.pittsons.com.au](http://www.pittsons.com.au)



**SHORT  
WALK FROM  
THE CENTRE  
OF TOWN**

- Very neat three bedroom home
- Lounge room with near new wood fire
- Separate dining area
- Roomy kitchen with great views to the south
- Access to back yard through roller doors front and rear of garage

*Great location*  
**\$300,000**

**FOR SALE**

**600 MERINO EWES**

4.5yrs

MIRANI - YALGOO BLOOD

August shorn

**\$80**

**800 MERINO EWES**

5.5yrs

MIRANI - YALGOO BLOOD

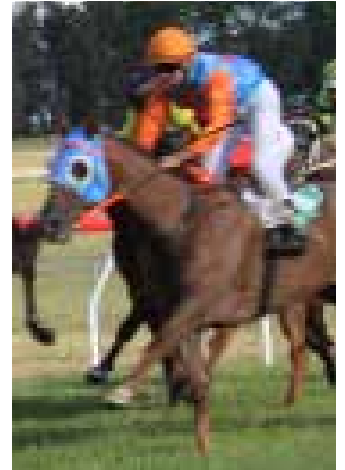
August shorn

**\$70**

For further information & inspection  
Contact Sam Payne 0428 667 404



# WALCHA RACES 2023



*Trainer Tas Morton from Port Macquarie hoists the Walcha Cup after Acoustix' win. Pictured with jockey Raymond Spokes, Elders manager Tom Henry and WJC Chairman Jim Nivison*



*Tracey and Bill Heazlett*



*Kirra-Lee Murphy, Olivia Haslem, Chloe Cox, Annyka McKenna, Marlee Wall*



*John, Yvette and Iona Stanton*



*Shae and Abby Partridge*



*Walcha Carrying Co. Fashions on the Field Lady winner Sharon Edmonds and runner up Belinda Creighton (centre) with judges Claudia Monique and Anna Barwick. Pictured with sponsor Stephen Haslem*



*Walcha Carrying Co. Fashions on the Field Mens winner Lance Partridge and runner-up Casper Ozinga (centre) with judges Will Fletcher, Claudia Monique and Anna Barwick. Pictured with sponsor Stephen Haslem.*



*Shelley Relf and Sarah Rose*



*Tess Johnstone, Cameron Norbury and Ada Garvey*



*Great racing mates Hugh Munro, Bob Charley, Mick Doyle and Peter Wauch*



# 'GLENEAGLES'

91 Gill Road, Walcha

**Versatile large scale breeding and backgrounding property**



**Wonderful location – just 17km N/E Walcha**

**2313.62 ha / 5716.96 ac**

- Gently undulating to low hills, well sheltered by natural assets of aspect and trees
- Outstanding water security – reticulation system, creek frontage, dams
- Huge amount of water storage for stock and domestic
- Substantial and functional property infrastructure in excellent condition
- 3 homes, donga village, machinery shed, shearing shed, 2 x sheep yards, cattle yards and more
- Off Grid - powered by 30KVA solar system and back-up generator

*An exceptional property will suit any investor looking for scale and growth potential.*

**Expressions of interest close 1.00pm 23 March 2023**

**Nutrien**  
Boulton's

**Bruce Rutherford 0428 660 328 or Simon Newton 0467 660 320**

Nutrien Boulton's – 3N Derby Street Walcha. Office 02 6777 2044

[www.nutrienharcourts.com.au](http://www.nutrienharcourts.com.au)





Left: Hannah Scobie and Niki Holz.  
Below: Brian Turton, Laura Haslem  
and Murray Rose. Right: Anna Barwick  
presenting Lance Partridge with his sash  
and prizes for Best Dressed Gentleman.  
Bottom left Race goers watching from  
the home straight. Right: Julie Bird,  
Carol Bird and Julie Hoad.



## what's the goss

with AJ Cross



**Had the pleasure of** being introduced to a couple of Pommy visitors, Terry and Dian Ward, who were great friends of the late Bernard Lynch, when they were here in town last week. Terry first met Bernard in a pub when he was travelling with Julian King quite a few years back and then was re-acquainted when on tour with Ian Crawford a few years later. 'Crawf' was very happy he caught up with Terry and Dian last week.

...

**Bumped into former Walcha 'Walloper'** and Roos front rower Dave King at the races last Saturday. Kingy was a member of the Walcha Rugby League team that defeated Werris Creek 12 - 4 in the 1995 Group Four Grand Final. He told me that of the 74 years he has been on the planet, the years he spent in Walcha as a policeman from the late 1960's up until 1976, were the best he had experienced anywhere.

...

**Local Veteran cricketer Peter Boyd** has been selected for a Northern NSW team to play a touring England side in an over 70's game at Number One Oval in Tamworth this Thursday. A talented all-rounder, 'Duke' has been Walcha's 'Player of the Season' taking out the E.R Brazel Memorial on six occasions 1982, 83, 91, 95, and shared the award with Nathan Goodwin in '99 before collecting his sixth prize in 2007. Good luck against the Poms on Thursday Peter.

...

**Still on Vets cricket, four current** and former Walcha players have been picked in NSW Over 60's team to play Queensland in a State of Origin Cooper Finlay Cup game at Toowoomba March 29th and 30th. Current Walcha/Uralla players Barry Hoy and Bill Duncan will be joined by Craig Stoddart (named Captain of the team) and Steph Sweeney for the Match.

...

**Late last month Bill played for** a Northern NSW Invitational squad against a Sunshine Coast Invitational team over three days which NSW won 3-0. Bill played two of the three matches scoring 40 runs off 20 deliveries before retiring on day two and then the following day belted 28

off 31 balls before once again retiring.

...

**It would have been an interesting** round of golf for the finalists in the 2022 Match Play last Sunday which was played in conjunction with the Keno two person ambrose event. Jack O'Hara and Michael Stackman not only played against each other, they teamed up with Deon Lawrence and Jamie Bowden where Jack and Des were required to play two balls a lot of the time.

...

**What's more it took 19 holes** to sort out the Match Play issue before Michael was crowned King after Johnny lipped out his putt on the first play off hole. Sadly for Jack he also lipped out a putt on the 18th which would have won the title if he sunk it.

...

**Last Saturday a group of girls were in a punting syndicate**, including Kimmy T and Sally B who were discussing the winner of the last race in Walcha. After telling them it was obvious to take 'Flying Pretty', by the way they looked the girls decided to select another horse instead of my suggestion. Gee I was happy when 'Flying Pretty' saluted, paying \$6.00 for the win after having invested \$20.

...

**The weekly 777's competition** at the Newie last Saturday went off with Philip 'Paddles' Chandler and Queenslander Gregory 'Doey' Partridge, splitting the jackpot cash after selecting winners of Race 7 in Sydney, Melbourne and Brisbane. This week prizemoney will commence at \$100.

...

**This seasons school swimming carnivals** kicked off last Friday when the Small Schools - Woolbrook, Niangala and Yarrowitch - were the first to hit the water. This Thursday Walcha Central have their carnival scheduled, followed by St Patricks on Friday. Best of luck to not only all competitors, but to organisers going on what the weather forecast is for later in the week.

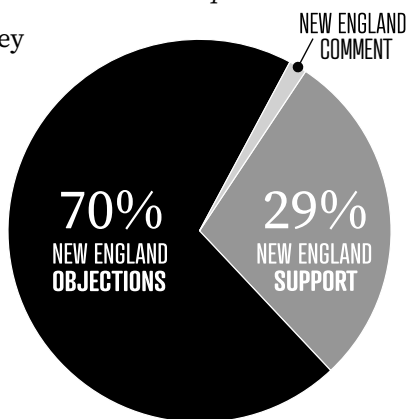


# THE FLOUNDERING OF HMAS WINTERBOURNE

You must have heard Vestas crowing lately, claiming to have totally squashed those divisive devils at Voice For Walcha. And you'd be forgiven for thinking they had a point, what with the EIS Support/Objection ratio touted at 52 to 46 percent. Hardly a landslide, but enough to make one sit up and take stock. And they've been crowing louder every day, no fear, even though that alone is a bit of a give-away. Empty vessels aside, it's often the case that the more someone shouts, the less secure they are in what they're saying. And although Vestas are telling a story they desperately want to believe (*and want everyone else to believe*), more holes in their boat are appearing all the time.

Let's consider just one major source of holes in this increasingly leaky vessel: **the origins of the Supporting Submissions** for the Winterbourne project. Most people would agree that the main impact of this wind project will be upon members of the New England communities within the designated area of the Project, Walcha in particular. After all it's their turf and they have to live with that burgeoning tribe of towering turbines. So they have more right than anyone to comment on what a project of this immensity will mean. But in fact about 70% of the Support Submissions come from well beyond the New England area - what might be called "Outsiders". We're talking country towns, coastal to inland, and cities like Melbourne, Brisbane, Sydney, Perth, and even Ontario, Canada! (It's true, no fear; though who dug up that one is anybody's guess.) Someone suggested that the bulk of these Support submissions were drummed up by Vestas itself, through social media. But surely that wouldn't be the case. We're talking 346 submissions. *Surely to goodness they couldn't be that desperate.*

Then again, maybe they could be. After all, remove those 346 ring-ins from the equation and the submission ratio changes radically: Supports 29% - Objections 70%. **Now that really is a very different story, and one that's riding high on the waves.**



However, if it is the case that something as tawdry as a kind of RentaMob was involved here, then you have to pity those involved in the gig because they sure didn't get good value for their effort. Most of the support submissions were pitifully weak; brief, banal and jokingly generic. Many were of the *Wind is Great* calibre, or *Love Renewables*, or *Jobs for a Dying Community*, etc. What's more, almost none of them made any significant comment whatsoever addressing the main reason for this entire submission process -



the Environmental Impact Statement, the big Vestas EIS. The most that these submissions could claim is that they boosted the numbers. Big deal. That's just more passengers on a sinking ship. But don't panic, you're on the Titanic.

Of course the poor quality of 'outside' submissions will be taken into account by the Independent Planning Commission. The Planning Department has made it clear that submissions of support from **outside the region, and that do not relate to the project or the community of Walcha**, will be considered as less relevant than those that do.

While we're on the subject of EIS submissions, though, this is a good point to flag the **incredibly high quality of the Objections** made to the wind farm project. It's also worth noting here that those Objections came almost entirely from the New England area, predominately from Walcha, so there has certainly not been any fatuous inflating of numbers - pretty well all honest home-grown stuff. And as it has been said before, this little community can be really proud of itself. In a David and Goliath conflict they have punched so far above their weight that it's beyond words.

*So what does it all mean?* It means that despite the megaphoned fabricated narrative from Vestas about silencing a community's objection to a truly dodgy project, the absolute opposite is in fact the case. It means that the 438 Objections to the wind farm project amount to over 8 times the 50 submissions required to trigger an Independent Planning Commission (IPC) into the project. Add a local council objection to the DA, and that IPC investigation becomes a dead-set certainty. No fear, Vestas will definitely have its work cut out answering the tsunami of searching question coming their way over the next year or so.

And, on a brighter note, maybe (just maybe) it also means that the Walcha community can at last come together and really start thinking seriously about ways of creating proper, realistic renewable energy solutions.

We can do it if we row together.



## Cricket

### Walcha/Uralla v Hillgrove

Hillgrove Third Grade

P TOWNSEND run out .....	44
D COWAN b B Mansfield c J McFarlane .....	26
L EASTWOOD b M Brazier .....	3
A STEWART LBW B Mansfield .....	3
R EASTWOOD b M Tasik .....	8
C VANDERVEER b D Morley c B Hamilton .....	5
A DULLAWAY not out .....	14
B JORDAN b C Mooney c N Endacott .....	2
C JORDAN not out .....	4
Total 132. Extras 23. Bowling (overs/maidens/runs/wkts)	
D Hamilton 7-0-24-0, C Mooney 6-0-27-1, J McFarlane	
8-0-24-0, P Mooney 4-4-1-14-0, M Brazier 4-2-0-10-1, B	
Mansfield 4-0-14-2, P Morley 3-0-7-1.	

### Walcha Uralla

B JEX LBW C Vanderveer .....	5
J MCFARLANE b C Vanderveer .....	7
M TASIK b A Partridge .....	18
P MOONEY not out .....	50
B MANSFIELD LBW A Partridge .....	8
C MOONEY LBW A Dullaway .....	4
N ENDACOTT b A Dullaway c A Cowan .....	0
M BRAZIER not out .....	24
D MARLEY LBW R Eastwood .....	3
Total 136. Extras 17. Bowling (overs/maidens/runs/wkts)	

V Simpsons 8-1-25-0, C Vanderveer 7-0-23-2, A Partridge 4-0-22-2, L Eastwood 3-0-15-0, A Dullaway 2-0-3-2, R Eastwood 3-0-17-1, C Jordan 2-0-14-0, B Jordan 2-5-0-14-0.

Walcha/Uralla Third Grade team defeated Hillgrove by three wickets in their Armidale and District 40 over match at Peter Fenwicke Oval last Saturday. Batting after winning the toss the visitors posted a score of 7/132 with several homeside bowlers meeting with success.

Brian Mansfield snared 2/14 from his four overs, whereas opener Cameron Mooney, Mitchell Brazier, Matt Tasik and David Morley all claimed a wicket each.

In reply Walcha/Uralla were in a bit of trouble at 7/71 before 'Player of the Match' Peter Mooney and Brazier put on an unbeaten 64 eighth wicket partnership. Batting at number four Mooney made an unconquered 50 runs which included three sixes and two fours while Brazier remained 24 not out when the homeside passed their assignment. Man of the Match Mooney was a bit tender earlier in the week after he pulled a tricep muscle while underarming a return while fielding, putting it down to 'Old Blokes' syndrome.

The Walcha/Uralla Second Grade team had the bye last weekend.

This Saturday both teams travel to Armidale where the Seconds take on Easts at Lambert Park and the Thirds do battle with Ex Services at Harris Park.

## Bowls

**Thursday Triples Carnival:** Sixteen teams from several clubs nominated for our annual triples carnival that was played on Thursday. Two games of sixteen ends were played and the teams who won most ends after both games took out the prize money. The winners were a team from Oxley of Tamworth led by Jamie Smyth. Second place went to South Tamworth who was led by Les Goodchild. Third and fourth places were won by Walcha teams, Steven and Kyle Goodwin who teamed up with Terry Parker and Noel and Brian Goodwin and Eric O'Keefe. Thanks to all who made the day so successful.

**Dads Army:** The majority of our players who played in the carnival had a great day and will be back to our usual games next Thursday commencing at 1pm.

## Vets Golf

The opening round of the New England Veterans Pennants 2023 is scheduled for this Thursday 9th February at Uralla.

Next Thursday 16th February is round one of the New England Medal Competition at Glen Innes commencing with a shotgun start at 9:30am. Nominations for the Glen Innes Vets Open close this Friday 10th February.

Then the following week Thursday 23rd February Glen Innes will be hosting the second round of the New England Vets Pennants competition followed by the third round here at home a month later.

## At the 19th

A two person ambrose NSW Keno qualifier was played in conjunction with a medley ambrose for trophies donated by Brian Smith Timber Transport last Sunday, where Lee and Ruth Fletcher ran out the winners after carding a 64 1/2 nett. Runners-up were Deon Lawrence and Jack O'Hara on 65 1/4, but as Jack is not a member of the Walcha Golf Club they were ineligible to qualify for the Keno competition. Sweepstakes went to Doug and Cheryl McDonald 66 1/4, Michael Stackman and Jamie Bowden 66 1/2, who were ineligible to qualify for the Keno because they won the Walcha qualifier last year. David Sweeney and Jock McLaren 67 1/4 (first qualifiers), Peter and Col Berry 68 (2nd qualifier), Don Brooks and Barry Hoad 68 1/4, Margaret Davidson and Jenny Lisle 68 1/2.

It took 19 holes to determine the 2022 Match Play Champion where Michael Stackman won the title from Jack O'Hara in the final. Sharpest shooters at the pins were John McCormack (3) and Jock McLaren (18).

Last Saturday Crichton Barr accumulated 17 points to win the weekly 9 hole competition, a couple of points clear of runner-up Col Higgins who counted out Jenny Lisle and Max Holstien also on 15 points.

This Sunday is a Stableford round for a trophy donated by Don Brooks.

## Wednesday Golf

Wednesday Golf got underway last week and it was great to see such a good turn out for the first game of the year. We played a 4BBB Stableford draw for partners for Simone Sweeney and Cark Street's trophy.

It was wonderful to see our newest player Robyn Salt in the winners circle. She partnered Lorraine Walshe and together they notched up 38 points to take home the trophy. Well played girls.

Sweepstakes were won by Ruth Fletcher and Lyn Laurie with 37 points, closely followed by Jenny Lisle and Pauline Carter also with 37. NTP on Hole 3 was Sal McCormack and second shot on 18 went to Cheryl McDonald.

Today we are hoping to get some beginners along. We are playing par for Margaret Higgins Beginners Day trophy.

## Flippers

The Walcha Swimming Club kicked off 2023 with the annual Harwood Swim School in late January, where 45 members took advantage of the Coaching Clinic kindly sponsored by the Walcha Council. President Yolanda Mooney would like to thank the club members and supporters who helped clean up after the Walcha Races where \$568 was raised through can collection.

Walcha Jockey Club President Jim Nivison indicated to Yolanda that they will also be making a donation to the Swimming Club following their clean-up efforts. Round one and two results for 2023 to come next week.

## Gun Club

The Walcha Gun Club will hold a One Day Open Shoot this Saturday at the club on Bergen Road. A total of 48 pre registered shooters will compete, shooting 150 targets before winners are declared. If necessary a 'shoot-off' will decide the eventual winners of overall and first to third in AA, A, B and E grades. This being the club's first Open Shoot, it would like to thank major sponsors - The Professionals Armidale and Alinghams Armidale. The club also thanks local support from Glen Collin Pastoral Company, New England Hotel, Peter Norbury Motors, Betts Transport, Walcha Tyre Service, ETE Services, with a huge thank you to Danny and Vicki Hoy of Hays Concrete.

### FRIDAY 10TH & SATURDAY 11TH MARCH



#### Mad Cow Bucking Comp

The Ash Barnett Show

#### Cattle Dog Challenge

Motor Bike Comp

#### Pet Show

Fireworks

#### Demolition Derby

Dog Jumping

#### Plus More, More, More

Details on Facebook - walchashow.org.au

Contact Dale Webber 0459 594 236 or walchashowsociety@gmail.com



### Niangala Hall Committee

invites you to the 33rd Annual

### Prawn & chicken night



Saturday 25th Feb - Niangala Community Hall - 7pm  
\$60pp BYO

Delicious prawns, chicken, salads and yummy desserts

● DANCING ● MUSIC ● RAFFLES

Limited numbers & no ticket sales at the door

Please RSVP BY  
Friday 17th Feb 2023

Gail: 6769 2335 - 0429 692 335  
niangalacommunity@outlook.com





## Positions Vacant



### Apsley Riverview Walcha

We are currently recruiting for the following positions:

#### Care Workers – part time & casual

Immunisation requirements: you must have had both Covid shots plus a booster and the flu shot in order to work in an aged care facility in NSW.

About us – Our mission is to provide care and accommodation for older Australians with a commitment to excellence. We care for and nurture the whole person and strive to enable our residents to live in a safe and caring environment.

Would you like to opportunity to care for older people in your community? How about working in a role that is truly rewarding in a workplace that feels like a big family? If yes we would love to hear from you.

Employment with Presbyterian Aged Care is subject to satisfactory background checks which include a National Police Check and reference checks. To be successful in these roles you must hold valid working rights in Australia.

If you would like to join our wonderful team, please contact Julie Blake (Facility Manager) or speak to our office staff for a full job description.

Phone: 02 6777 4400

Email: jblake@pcnsw.org.au

## Positions Vacant (CONT)



### NOW HIRING TRAINEE STORE MANAGER

Are you looking for a long-term Career?  
Experienced/passionate about wool?  
FOX & LILLIE RURAL are looking for a  
TRAINEE STORE MANAGER  
at our Uralla Wool Store.  
Training and mentoring provided.  
Apply now, send a letter of application  
and resume to: caseyr@flrural.com.au

## Public Notices (CONT)



### WALCHA COUNCIL Walcha Lions Park Upgrade Works Commence

Commencing 6 February 2023 and for the duration of March 2023, the Walcha Lions Park will be closed to the public for upgrade works. This first stage of the upgrade will see new playground equipment installed and landscaping works begin. The public rest rooms will remain Open for use. Please exercise caution when in the vicinity of the construction site.

PHILLIP HOOD, DIRECTOR  
INFRASTRUCTURE & DEVELOPMENT  
WALCHA COUNCIL  
PO BOX 2, WALCHA NSW 2354

## Public Notices

**Church service** at Woolbrook Church, 2pm, this Sunday. Info Graham Barnes 677 2539

**McDonalds Gas** will be closed from 9 February and re-open 20 February. No pick ups or deliveries during this time.

**Remedial Massage Therapist.** Walcha Physiotherapy welcome RMT Olivia Tickle back to their team. Tuesdays 8.30am - 11.30am and 2 Fridays per month 8.30am to 4.30pm. Bookings from Tuesday 14/2/23. Certified to claim health funds. For appointments contact: Walcha Physio on 6778 0011.

**Squash Comp** starting Tues 14th Feb. Will run 7-8 weeks. Anyone interested in playing contact James: 0427 049 378

## Garage Sale

**160n Angle St, Walcha. 11 February** 8am - 1pm. Household goods, tools and furniture.

## For Sale

**Layer pullets.** All breeds. 20 wks. Delivered Friday 17/2/23. Phone Jim 0428 194 105

**Good quality** fire wood split and delivered. Phone 0427 331 556

## Thank You

Gwen Lisle wishes to express her sincere appreciation to everyone who sent her congratulatory messages, cards, gifts and flowers on the occasion of her recent 100th birthday. Please accept this as her personal thanks.



### WEDNESDAY

GENTLE YOGA  
**9.15am - 10.15am** \*longer class\*  
8 February to 5 April (No class 15/3)

GENERAL YOGA  
**5.15pm - 6.15pm** \*new time\*  
8 February to 5 April (No class 15/3)

### THURSDAY

GENERAL YOGA  
**5.15pm - 6.15pm**  
9 February to 30 March

### COST

Wednesday am 1.25hr class – 8 week term  
\$150, \$120 concession  
Wednesday and Thursday 1hr class – 8 week term  
\$120, \$96 concession

### CASUAL PRICING

1.25 hour – \$25, Concession \$20  
1 hour – \$20, Concession \$15

### BOOKINGS & QUESTIONS

Email: walchayoga@gmail.com Phone: 0448 433 746

## church notices



### ANGLICAN

Sunday 7.30am Holy Communion  
10am Family Service and Kids Club  
All welcome. Phone 6777 2543 or email:  
walchaanglican@gmail.com

### PRESBYTERIAN

Walcha Sunday 9.30am. Woolbrook  
2pm.  
All welcome. Phone 6777 2539.

### CATHOLIC

Sunday 10:00am Mass.



**TRU BLU RECYCLING**

**CASH**  
FOR  
**CARS & TRUCKS**  
ANY CONDITION

TRUSTED LOCAL OPERATOR  
FOR OVER 15 YEARS  
Mark 0412 310 650

**CURTIS MOWERS & SMALL ENGINES**

**SERVICE + REPAIR**  
• Mowers  
• Chainsaws  
• Ride-ons  
• Pumps  
• Whipper snippers  
• Chain Sharpening  
• Bar Dressing

**NOW SELLING**  
• New 30 & 40 Tonne Petrol Hydraulic  
**WOOD SPLITTERS**  
From \$3100 delivered  
• Chainsaw chain

ALL TYPES

**JAMES – 0488 020 762 (7 Days)**

**PARTOS CONTRACTING**

• Ram Shearing  
• Two Hecton Crutch Handlers  
• Wool Classing

Lynden 0499 477 716  
Karina 0456 189 275

**Nick Moore PLUMBING & EXCAVATION SERVICES**

Highly qualified and experienced plumber  
All aspects of Plumbing and Gas Fitting  
Wood heater installation  
Roofing and Guttering  
Gold Licence No 59555C

**Nick 0418 691 306**  
nickmoore203@yahoo.com.au  
Katy 0422 034 660

Tree lopping  
Tree removal  
Truck & chipper  
Bobcat  
Post hole digger  
Trencher  
Woolshed cleaning  
Stockyard cleaning

**Scott Kermode 0427 100 889**

**TREETOP services**  
treetopservices@bigpond.com

**WALCHA LAW SOLICITORS**

Sophie Thomson | James Levingston

Conveyancing | Power of Attorneys  
Wills | Estates | Traffic Offences

Local Firm - over 70yrs in the Community

**02 6777 2066** info@walchalaw.com.au  
walchalaw.com.au

INCORPORATING PATTERSON BYFIELD & BRYEN

**SELF STORAGE**  
NORTH STREET – WALCHA  
**VARIOUS SIZED SHEDS**  
**SECURITY FENCED**  
**67773899** 0428 653 307

**A G W RURAL CONTRACTING**  
GPS Equipped boom spraying  
Andrew Wauch 0427 549 748

**STORAGE CENTRE WALCHA**

20' Containers available for rent \$35 pw + GST  
Secure Undercover parking for cars, vans etc \$15 pw +GST

**ANGUS 0427 787 332**

**DBE**  
DREW BIRD ELECTRICAL  
Call **0456 185 304**  
RURAL. DOMESTIC. COMMERCIAL.  
drewbirdelectrical@gmail.com Lic No.400883C

**GRAPHIC DESIGN**

**CORPORATE IDENTITY & LOGO DESIGN**  
BRAND GUIDELINES • SIGNS • BOOKS & MAGAZINES  
ANNUAL REPORTS • CATALOGUES • BUSINESS CARDS

**0418 281 489 • OSCARWAUGH@GMAIL.COM**

**WALCHA HIRE**  
Andrew: 0427 549 748  
Toni: 0421 972 354

**New England IT**  
**ONSITE COMPUTER SERVICE + SALES**  
Tim Sutton **0414 874 523**

**CHIROPRACTOR**  
**K Samantha Goor**  
B.Sc. Anatomy (NSW) M Chiroprac (Macq)  
Tuesday & Friday from 9.00am  
**6777 1340**

*A pure taste with little waste!*  
**PURE RAIN TANK CLEANERS**

**0428 320 985**  
James Patterson-Kane

**MOBILE-FIX AUTO+AIR**  
Mobile Repairer & Airconditioning Specialist  
Licensed Vehicle Repairer  
Lic.No.46696 RTA Lic No. AU22616

**PATRICK STACE – WALCHA**  
Mob. 0428 780 077 Ph. 6778 0595

**DISCLAIMER** LETTERS TO THE EDITOR are submitted on the condition that The Walcha Telecottage as the publisher of The Apsley Advocate may edit and has the right to, and license third parties to reproduce in electronic form and communicate these letters. They are published at the discretion of the Editor and Board. The Apsley Advocate is printed by The Walcha Telecottage, PO Box 116 Walcha NSW 2354. Phone 6777 1111 Fax 6777 1112. The Walcha Technology Co Operative Limited, the Editor and Staff of this Newspaper have published any article herein in good faith and bear no responsibility in respect to the accuracy of the information contained in such article. Any person or persons publishing material in this Newspaper do so in the knowledge that they shall personally accept any responsibility for the accuracy and other correctness of such articles and also accept full responsibility for the legal consequences if it be found that the article contains any inaccuracies in the contents of any such articles. **DEADLINE MONDAY 4.30PM** Editor: Anthea Macpherson. Advertising and Sport: Rosalie Gibson, Megan Scrivener and Emily Scrivener.



# Marchant Est. 2000 BROS.



A FULL RANGE OF AFFORDABLE TRANSPORT & EARTHMOVING  
**COMMERCIAL WATER CARTING**  
Dam construction/maintenance, stick raking, road building,  
site prep, pipe laying and all timber work.

Check out our website for the full range of machinery,  
attachments and services available



**Earthmoving and Heavy Haulage Transport**  
**Jason 0427 490 487**  
02 6777 2024 marchantbros@bigpond.com  
www.marchantbros.com.au

## FOR ALL YOUR EARTHWORKS TRANSPORT AND ELECTRICAL NEEDS

ALL ASPECTS OF RURAL, COMMERCIAL & CIVIL WORKS



- Freight & Transport • Machinery Float • Stick Raking
- Road construction and maintenance • Trenching
- General Earthworks • Drilling • Mulching
- Dam maintenance and construction
- Erosion Control • Site Preparation • Electrical Works

**Ian Notley 04188 29188 • Mark Notley 0422 637 686**  
www.eteservices.com.au



## WALCHA BOWLING & RECREATION CLUB

**Mon - Wed** 4pm – Close

**Thursday 9** 12.00pm – Close

Ladies bowls 9am for 9.30am start  
Social bowls 1pm

**Friday 10** 2.00pm – Close

2.00pm Bingo

6.00pm Bistro

• Grilled fish with BBQ fresh prawns

• Chicken & bacon Kiev

• Aussie deluxe steak sandwich

• Normal menu available, takeaway and delicious dessert.

6.00pm Tickets available for raffles -  
meat and veg trays

7.30pm Free Bingo

8.00pm Raffles drawn & Members Draw

**Saturday 11** 11.00am – Close

6.00pm Bistro

**Sunday 12** 11.00am – Close

12.00pm Bistro open

Children U/10 kids meal free with adult  
order

12.00pm Meat, fruit & veg raffles

**SUNDAY**  
**25TH FEB**

**\$12 ROAST OF  
THE DAY**

**HAPPY HOUR  
FROM MIDDAY**

**MEMBERS  
DRAW  
\$50**

YOU MUST BE A MEMBER FOR  
2023/2024 TO BE ELIGIBLE TO WIN

**TOM'S COCKTAIL**

**Long Island  
ICED TEA**



Do you live in Walcha Shire? If so you **MUST** be a member to enter the Club  
Social Membership ..... \$15 – Full Membership \$105. PHONE 6777 2077

## LINMAC ENGINEERING

**IF YOU NEED IT – We make it!**

### CUSTOM TRAYS AND TIPPERS



- Customer consultations to make sure we build to YOUR individual specifications
- Sandblasted and powdercoated
- Toolboxes, timber floors, tipper trays, water tanks ... whatever you need!

### AUTHORISED HUSQVARNA DEALER



**Check out our new facebook page:  
Linmac Engineering Walcha**

**211N Pakington Street WALCHA**  
Phone 6777 2822 Email enquiries@linmacengineering.com.au