

THE APSLEY Advocate

CIRCULATION 1810 P 02 6777 1111 F 02 6777 1112 wtc@walchatelecottage.com.au walchatelecottage.com.au

30 November 2022

Ash's big win at Equitana 2022



Photo credit: Jane Cross

Walcha's Ash Barnett has taken out the inaugural Liberty Championship at Equitana – a huge event showcasing the best of equine competitions – with her two horses Chilla and Spider.

From the time she could walk Ash has been working with horses, you name it she can do it. Pony Club, campdrafting, show jumping, eventing and stockman's challenges, breaking and training. A natural horsewoman and a real allrounder, over the years Ash has worked with some of Australia's most well-known trainers to hone her skills.

Liberty, working horses loose, without ropes or reins, has always been something Ash has been interested in, but it wasn't until 'Chilla' came into her life that she truly started her Liberty journey. Chilla, a homebred 9 yo Warmblood cross Quarter Horse, suffered an injury as a two year old resulting in him having his left eye removed. Ash poured her heart and soul into training Chilla and they share a very special bond. In 2021, Ash recruited Spider a 4 yo Quarter Horse cross, to her Liberty team.

Ash has worked hard to establish the trust between herself and her horses. "We have had hours of time together creating a bond and nutting out a routine to an 8 minute presentation in the ring, including the

music and props set up" says Ash.

Equitana is held in Melbourne, which meant Ash had to travel 14 hours with her two horses to attend. But from their results the journey obviously didn't affect her team and their performance. "Chilla and Spider travelled so, so amazing" says Ash.

Once there, Ash performed her routine with a *Harry Potter* theme, dressing up as Harry Potter herself and Chilla and Spider to match. "Chilla was a super star, the routine started with just us, showing off our connection. Spider later entered the act with speed. I work the two of them together displaying how well the three of us can work as a team" said Ash.

When they exited the ring at the completion of their performance Ash's support team were in tears. Tony Barnett, Ash's father was so proud of her and her boys, stating they were incredible.

"All the competitors are highly talented, but the support we all provide one another in the lead up is most impressive" said Ash. She would also like to thank her amazing support team – her father Tony and her partner John Wheeler.

Ash has a huge career ahead of her and we can't wait to see what else she can achieve.

-wolka-

COOL COLLECTIBLES STUFF

thebigblackbuilding

Christmas is almost here!!!

thebigblackbuilding has something for everyone, so don't wait until the last minute and panic buy, get down to the BBB now and get your Christmas shopping out of the way in one go!!!

10 till 4 Thu, Sun, Mon
10 till 5 Friday & Saturday

0411 713 566

THE FRUIT SHOP

Mon to Fri 6:30am to 4pm
Sat 6.30am to 1pm

CHRISTMAS ORDER FORMS NOW AVAILABLE!

Free in town delivery
For produce orders over \$50
Ph: 67772977
to place your order

CHRISTMAS IS NEAR

Looking for great gift ideas?

- Knives • Pocket knives • Hats
- Clothing (Ariats, Ringers Western, Wranglers, Thomas Cook, Just Country) Belts, Ariats and Blundstone Boots ... and more!

WVS
WALCHA VETERINARY SUPPLIES

6 Aberbaldie Road Walcha. Ph 6777 2588. www.wvs.com.au



OK EARTHMOVING

Specialising in road construction & maintenance

• Stickraking • Dam building • Erosion works



Bulldozers • Excavator • Tip-truck • Vibrating Roller

PH 6777 7430 FAX 6777 7448

PETER O'KEEFE: 0429 944 821

Winterbourne Wind Farm EIS Exhibition



An Environmental Impact Statement (EIS) for the proposed Winterbourne Wind Farm has now been lodged with the Department of Planning and Environment (DPE) and is on public exhibition.

Come along to our upcoming community drop-in sessions to learn more about the proposed wind farm and how you can make a submission about the project. We will have subject matter experts on hand to answer your questions.

Session 1 Friday 2 December, 12 pm – 4 pm
Walcha Bowling Club

Session 2 Saturday 3 December, 10am – 2pm
Walcha Bowling Club

Visit winterbournewindfarm.com.au
or call 1800 252 040 to learn more



around the traps



By SIMON NEWTON

The country has started to dry out and the grass has finally got some real substance about as we experience a run of warmer temperature and edge closure to summer. The wind as much as we all dislike it has played a real part in drying the joint out and its exactly what the croppers are looking for more of, as they tussle with the headache of a late and disruptive harvest. Locally people are marking lambs and calves, spraying out country and generally catching up on jobs that have been put aside due to the wet weather. Hard to believe it's just less than four weeks till Christmas and I might just say another drop of rain would keep the country fresh.

We took quick trip to Walgett last week through the Coonamble district to truck some agistment cattle out and I couldn't believe just how fresh the country still was. Not only has the harvest for most farmers just commenced, but it still looked like the country did in September. No doubt there will still be some big grain crops about, even after the deluge of rain, but the quality will be as big of an issue as the logistics of getting it out of the paddock. Not only has harvest been an issue, but the lack of shearers, barbers poll and the amount of flies getting into their sheep is ridiculous. I understand just how much goes into shearing a sheep, but the lack of shearers is getting beyond concerning with sheep farmers around Corinda bringing the shearers in by chopper and still paying their local contractor \$14.50 to get their sheep shorn – it has literally risen \$2/hd since we were there in September.

The beef market continues its decline as we head towards Christmas and the processors find adequate kill numbers as the country dries out. Majority of processors are on a no quote basis and are actually booked up completely on their direct kill space in December. There is a number of elements driving the market south, but it's generally just a simple case of supply and demand heading into a period where the processors will shut down for three weeks over Christmas this year, not the normal two.

There have been plenty of cattle suitable to get to the market over the last few months but logistically with floods and wet roads it has been impossible and they have hit the market all at once. Taking a look at the feeder market we can see that at least 80-90c/kg has been wiped of the feeder price, with Angus steers back to 500c/kg and XB 450c/kg. There are a number of factors affecting this value, currently high supply, uncertainty for feedlots surrounding grain prices and supply, and the fact that our beef is so much dearer on the world market when comparing to the likes of USA. Don't get me wrong, I believe our product is superior, but when you have USA killing a huge amount of females due to a large drought and being able to supply beef at \$500 or more less per beef body than us, it's no wonder the huge consumers like China and Japan are lapping the cheaper beef up. What you may not know is that even though USA are dumping large volumes of beef onto the world market, they will in turn become a net importer of beef next year, especially when there drought breaks, which could be next Autumn and the fact that there is 140,000 less cattle on feed in the last quarter of the year. So yes, there is some pressure on the feeder rate as feedlots try to get their beef supplied to the world market at a more competitive rate, but hopefully this will all change later into next year. Numerous producers have also decided to hold back their feeder cattle and fatten through, so I would also expect to see some downward pressure placed on the grass-fed kill market heading into Autumn next year.

Tamworth yarded 980 cattle on Monday with demand weaker and prices slipping 10-30c/kg. Weaner steers topped at 600c/kg, majority selling from 470-555c/kg, feeder steers sold from 400-485c/kg while cows sold from 260-312c/kg. Tamworth yarded 4100 sheep and lambs which saw resulted in cheaper trends for \$10-25/hd cheaper when compared to the previous week's sporadic buying behaviour. Trade weight kill lambs sold to a top of \$200/hd, with majority \$160-\$180 to processors, heavy lambs topped at \$230. Weaker processor competition carried on through the sheep with heavy XB ewes topping at \$130, while the majority sold between 90-\$110/hd.

Coog and Angus Flippers for life

On Wednesday 23 November, Walcha Flippers Swimming Club members and friends gathered to witness the first induction of Life Members to the club.

Operating for 52 years, the club is now thriving with 92 members, 19 of these new this season, and both Coog Cross and Angus Warden have played an integral role in its success.

Coog has been part of the club since its inception and over the years has taught most of the district's youngsters how to swim. How many hours has he spent in the Walcha Pool? We would hate to have a guess, but his contribution over decades is astounding and to be honoured as a life member of the local swimming club is well deserved.

"It is a great honour, especially as one of the first Life Members of the Club", Coog said.

Angus' passion, leadership and skills boosted the club's membership over the years from 30 odd in 2011 up to 90 plus. Club President Yolanda Mooney said Gus has a fantastic gift of getting the children to take advice and tips on improving their swimming.

On receiving his Life Membership Gus addressed current Club members "This is a great honour. I love this Club and I hope you enjoy it as much as I enjoy watching you". He also said it was an honour to be receiving his Life Membership alongside Coog who has contributed so much to the Club.

Angus thanked the current committee on their fantastic job, stepping up and keeping the club going. Both Coog and Angus said the Club seems to be getting better and



Coog Cross, Walcha Flippers President Yolanda Mooney and Angus Warden

better each year and previous committee members must also be thanked. Gus mentioned that without Kathy Mackaway, Cameron Greig and Ian Crawford the club would not be running as smoothly as it is and their past contribution should also be mentioned.

All-in-all, the Club is in great shape and both Coog and Angus have played a vital role in its success. Congratulations to you both.

Nutrien
Boulton's

Stock and Property Watch

www.nutrienharcourts.com.au

**IDEAL
FIRST
HOME**



GREAT INVESTMENT

- Rendered home with iron roof
- 2 large bedrooms, main bedroom with ensuite
- Northerly facing lounge and sunroom take advantage of the winters sun
- Lounge room has a fireplace and a gas point
- Additional toilet in laundry
- Fully fenced flat yard
- New Double colorbond garage

PRICED AT \$415,000

NUTRIEN BOULTON'S (02) 6777 2044

Inquiries to **Peta Carter 0407 350 781**



AuctionsPlus

**THIS FRIDAY
2ND DEC**

**A/c- RM & PL Wright
60 EU Angus Steers**

**A/c – Pomany Angus
80 EU Angus Cows**

50 EU Angus Heifers

50 EU Angus Steers

Phone

Miles Archdale

0428 660 326

LIVESTOCK FOR SALE

54 x 55

Angus & Angus Cross Cows and Calves

6 to 11 years old (All sound mouths)

Aug / Sept calves by Booroomooka Angus Bulls

Calves marked (29 Steers & 26 Heifers)

\$3600 + GST

16 x 16

Angus & Angus Cross Cows & Calves

3 & 4 years old

Sept/Oct calves by Angus bull

\$3600 + GST

Photos and Videos available on request.
 Inspections welcome

NICK HALL

0436 44 90 33

www.adcockpartners.com.au

Thank you Walcha!!

Christmas Day 2022 will be the last service for our current Anglican Minister, Ben France.

After eight years of being a part of the Walcha community the France family will be moving to Tamworth in 2023 to serve at St Paul's Anglican Church, West Tamworth.

Ben says, "We were definitely not looking to move away from Walcha, but we knew we would be tapped on the shoulder to go elsewhere at some stage. We can see that this is something that God has guided us towards and given us peace about, but it has still been a painful decision to make".

The family has all loved their time in Walcha being involved in a variety of different aspects of the community.

Ruth says, "This town is very unique. I have never lived anywhere that I have felt so much at home. This is a beautiful place to live, the countryside is stunning and the town itself is so picturesque. As much as it is cold here, I've always thought the people in Walcha make up for the cool climate. The people in this town make things happen, you get up and do things, whether it is being on a committee, reffing at touch footy, turning up at an event or volunteering on a street stall. There is a wonderful culture here."

"It has been a privilege to be a part of people's lives and to share life together in the midst of hardship and joy." Ben says. As they prepare to leave, Ben and Ruth and the boys would like to say, "Thank you for being our friends, thanks for taking time to get to know us. Thank you for running so many amazing things in Walcha, we have enjoyed so much being involved in all different aspects in the community. The school has been great for the boys, the staff have been extremely kind and we will miss very much the friendly faces and kindness there."

When we arrived here we came with an aim, to tell people about Jesus, and even if we haven't always got it right, we pray that we have done that with our words and with our actions."

The church family are holding a thanksgiving service for the Frances this Sunday at the Anglican Church, 9:30am.

Everyone in the community who wants to join them is very welcome. Following church there will be a lunch on the Vicarage Lawn and adjoining paddock, as well as a slip'n slide for the kids and young at heart.

Men of Walcha and surrounds

**Come along
and have a
chat with Perc!**



**TAKING
NAMES
NOW**

Walcha men this one is for you ...

Chainsaw specialist trainer Peter Berry will show you how to keep your gear going with Q & A's on chainsaw and maintenance.

Think.... Lets get our chainsaws ready for the bushfire season and next Autumn/Winter. You never know when you might need it.

DATE: Tuesday 6 December

TIME: 6.00 – 8.00pm

WHAT TO BRING:

Comfortable work clothes,
sturdy boots and any PPE
you may have.

WHERE: Woolbrook Hall

INCLUSIONS: Light food

COST: Free

RSVP: By Friday 2 December to
Brooke Jeffery 6774 2500
or bjeffery@walcha.nsw.gov.au

Participants must be over 18 years



Ben and Ruth with their children Hudson, Lincoln and Fletcher



IT MAKES NO SENSE

The Great Dividing Range is mainland Australia's most productive, biodiverse and substantial topographic feature. It serves as the definitive water shed for the river systems in Eastern Australia, hence the name.

It stretches more than 3,500 kilometres from the northern tip of Cape York Peninsula before fading into the Wimmera Plains as rolling hills west of the Grampians Region, at some places it can be up to 400 kilometres wide. It encompasses the world heritage listed areas of the Wet Tropics of Queensland and the Gondwana Rainforests.

Extensive areas of the highlands consisting of relatively flat well watered fertile land has been developed for agricultural and pastoral uses. Such areas as the Atherton Tablelands and Darling Downs in Queensland; the Northern Tablelands, Central Tablelands, Western Slopes and Southern Highlands in New South Wales; and the Victorian High Country have all served as dependable food bowls to the Australian economy for centuries. The parts too rugged for agriculture are used for forestry, producing a reliable supply of plantation softwoods and hardwoods to industry.

A succession of protected areas lie within The Range. There are over ninety national parks and reserves that encapsulate the greatest biodiverse forests in Australia, which apart from being home to critically important ecosystems, also provide enjoyment to thousands of people including many tourists seeking relief from the built environment.

But governments are recklessly offering up this rich, biodiverse region to wind and solar farm proponents on which to build thousands of enormous turbines, millions of solar panels and tens of thousands of kilometres of interconnecting high voltage power lines, potentially transforming it into an industrial wasteland. The turbines and solar panels will render thousands of acres of agricultural land sterile. The new transmission grid will cut a swathe of thousands of kilometres through magnificent forests, rendering the land to that of a moonscape.

Why then is government singling out the most valuable rural and natural environments in Australia, home to all creatures great and small, to be handed over to developers to destroy – it makes no sense?

For there are vast arid regions in Australia not all that far from the eastern seaboard where the wind blows constantly and the sun shines relentlessly day in day out, providing a reliable source of renewable energy, mitigating the need for environmentally unfriendly battery storage, made from rare earth metals, extracted by child labour in Chinese controlled mines, in Third World Countries:

- And a place where these 6MW eyesores the height of city skyscrapers together with their massive infrastructure would be out of sight.
- And where the blades of these monsters would not be chopping up on average 200 birds and 400 bats per turbine annually. Multiply that by an average sized wind farm of say 100 turbines – government and developers then have the mass slaughter of 20,000 birds and 40,000 bats per farm annually on their conscience.
- And where the toxic chemical dust, Bisphenol A (a compound that when unconfined is a ticking time-bomb) which is shed into the air every time the turbine blades rotate would not be poisoning people nor polluting farm dams and the water storage systems of towns and cities.
- And where dangerous levels of infrasound – emitted every time the blades rotate would be not be deleteriously impacting on the physical and mental health of man and animal across a distance of 20kms.
- And where man and animal would not be exposed to harmful levels of non-ionising and sonic radiation caused by the cobweb of high voltage overhead electricity transmission lines crisscrossing our rural landscape.
- And where vast native forests would not be razed to the ground.
- And where hundreds of thousands of native fauna would not be ungraciously displaced from their natural habitat.
- And where productive fertile agricultural and pastoral land vital for satisfying an ever increasing global demand for food, would not be impacted by significant loss in production.
- And where prime agricultural and grazing country would not be substantially devalued by the impost of heavy industry.
- And where a decade or more of chaos, causing traffic congestion, disruption to emergency services and commercial transport links could be avoided, during the construction phase.
- And where communities would not be divided by hubristic developers pitting neighbour against neighbour.

Nevertheless, the mass experiment with wind and solar farms on a scale that beggars belief, continues unabated, top to bottom of our extraordinary Great Dividing Range, which wonderland beholds its darling New England Region – it makes no sense.

Ian McDonald, Walcha Grazier and Conservationist

Are Wind Turbines the Best for our Future?

Dear Reader

Recently in the mail I received correspondence from the Department of Planning and Environment to view and comment on the proposed development of the Winterbourne Wind Farm.

Upon reading the letter I was confused, and that was my misunderstanding. I thought that I was limited in what I could have my say on, being "Controlled Action" as presented in the letter. All aspects of the proposed Winterbourne Wind Farm can be commented on.

Some major problems will be the increased traffic, loss of employees available to work in our shops, industry and in Primary Production, increased pressure on medical services and rental accommodation will be expensive and even more difficult to obtain. Just the start of a list of impacts to our Walcha community.

Winterbourne Wind is the first of many planned Farms in Walcha. Ruby Hills, Brackendale, Woolbrook and Thunderbolt Energy Hub. Approximately 550 turbines.

I consider nuclear energy to be our best alternative. No huge construction activity for Walcha, no industrial waste at the end of the turbine's life, and less resources to build. A greener future for our planet. Please take time to comment to the Department.

Name supplied but withheld

Walcha It's time for a Chemical CleanOut.

You can drop off for free:



Your next local event:

🕒 **Friday 9 December, 1:30 - 4:30pm**

📍 **Walcha Waste Depot
Aerodrome Road, Walcha**

🌐 **www.cleanout.com.au**

Only household quantities accepted (20L or 20kg).



Come along and join us for a Walcha Parkrun

Held every Saturday at 8.00pm, starting at *The Whale* on the Levee Bank, the Walcha Parkrun is currently Australia's highest parkrun and the only one of the 444 active events across the length and breadth of Australia that is over 1000m above sea level.

Everyone is welcome to come along and start their weekend off with a run, jog or walk, or if you do not feel like walking or running you can volunteer for the morning.

Walcha Parkrun started on 29 February 2020. Since then 549 participants have completed 2,217 parkruns covering a total distance of 11,085km, including 377 new Personal Bests. A total of 104 individuals have volunteered 593 times.

- The Female record is held by **Chiyo Brown** recording a time of 20:50 on 29 February 2020 (Event No. 1)
- The Male record is held by **Trent Irwin** recording a time of 17:37 on 9 July 2022 (Event No. 63)
- The Age Grade course record is held by **Christine Lalor** recording 83.62% (23:12) on 10 September 2022 (Event No. 72).



Today's Run Director Kath Little volunteered for the 26th time. Thanks to Rachel Fenwicke, Jane Moore, Michelle Wellings, Claire and Henry Williams for volunteering this morning.

Left: locals and visitors to town enjoying Walcha's 81st Parkrun.

Walcha Park Run: Event No. 81 – 26 November 2022

Run report by Robin Rishworth, Yarra Valley Victoria

In ideal running/walking conditions of about 15 degrees C, sunny with no wind, 22 participants completed the 81st Walcha Parkrun. The course wound its way on the Levee Bank beside the Apsley River. On one of the banks a long nose turtle was sunning itself.

Participants travelling from Queensland, Victoria and New South Wales to attend this Saturday's event. There were six participants who attended the event for the first time.

Well done to **Emma Noakes** on doing nearly a 25 min personal best (PB) with a time 26:17 and Emma was also the first female finisher. **Meredith Anderson** 28:42 a 42 second PB and **Sally Heaney** 42:08 a 21 second PB.

Robin Rishworth from the Yarra Valley in Victoria was the first finisher in 23:24. **Taddy Macfarlane** defied his age and ran 28:08 – not bad for a bloke in his late seventies, he had the best age graded percentage at 71.39%

from the Winterbourne EIS ...

“THE WINTERBOURNE WIND PROJECT WILL BE USING 116 MILLION LITRES FOR THE SUPPRESSION OF DUST, ROAD CONSTRUCTION, AND FOR CONCRETE.



EIS LINK

Concrete: The EIS states that 6ML will be used for Concrete foundation alone. With 119 x 800cu.m concrete foundation, at 22% water concrete. This equates to 20ML – well north of the EIS “guidance”.

Dust Suppression: The EIS states that 81 ML will be used for dust suppression over 113 km of roads within the project.

A large scale contractor with experience of many similar projects, has eyeballed the project in preparation for planning to provide dust suppression requirements. They estimate 30 x 12,000 Litre trucks doing 7-8 runs per day, for the 30 months (say 500 working days). This equates to 1,350ML. If they only apply dust suppression to 50% of their project road network, (or for 50% of the time) it will require 675ML – well north of the EIS “guidance”.

Road works/compaction: The EIS indicates that 26ML will be required for roadworks. Let's give them the benefit of the doubt on this figure– despite the poor performance of accurate calculations to date.

Rather than the 116ML indicated in the EIS, or the 220ML indicated by Doug Landfear in a meeting dated 29/9/22, we propose it would be arguably higher, more like 720+ML.



Where is this water coming from?



Walcha council have indicated that **Walcha town water is not for sale**, yet the EIS claims that;

“The Project has four viable options available to obtain an adequate and source water supply, being:

- Council water supply (or treated wastewater), in agreement with the relevant Council(s);
- Extraction of water collected from existing (or new) dams using landowner harvestable rights or from an existing nearby landowner bore, in agreement to use their allocation;
- Extraction from one or more new groundwater bores, which will require WAL(s) in consultation with WaterNSW; and
- Extraction from a large private dam located approx 20 km to the north of the Project Area, which will require a WAL in consultation with WaterNSW and the licence holder.”

It is difficult to put this amount of water into a scale that everyone can understand, but this would empty the newly designed Walcha Water storage (300ML), currently being constructed, more than 2 times over.

This is a valuable resource, that is sensitive to the residents of Walcha having endured 2 years of restrictions during the recent drought.

Is the scale of this project appropriate for this community?



OPEN 9 - 11AM,
AND 12 - 2PM
EVERY WEEKDAY



Local chiro 'Giving Back' through Toys for Treatment

This December, local chiropractor Dr Samantha Goor is joining chiropractors from the Australian Chiropractors Association (ACA) in hosting 'Giving Back' Week to help families in need this Christmas.

Walcha Chiropractic Centre have partnered with The Salvation Army to host 'Giving Back' Week in conjunction with their annual Toys for Treatment Day. The clinic will be asking patients to donate gifts to the value of a consultation in lieu of payment on Tuesday 6 December or donate gifts throughout the week.

The generous donations can be made in the form of new, unwrapped toys, non-perishable food, hygiene products, gift cards or cash donations. There's no limit to how you can help your community this Christmas. Those without an appointment are also welcomed to contribute with Walcha Chiropractic Centre receiving donations for the whole week and welcome all from the local community.

"Any contribution, big or small, will be greatly appreciated and go a long way to help members of the community in need this Christmas," Sam said. Items will be delivered by The Salvation Army in time for Christmas, to less fortunate children and families in the local area.

"The power to make a child smile and help relieve the burden on a family during Christmas is a great one, so join us this Giving Back Week/Toys for Treatment Day, and help us uplift our community this festive season."

For more information contact Walcha Chiropractic Centre, 109w Fitzroy Street on 6777 1340 or Giving Back www.chiro.org.au/givingback.



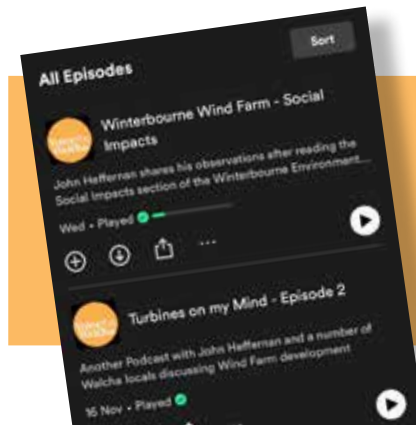
Podcast on EIS health failings

John Heffernan

I have just written an article addressing an array of health issues related to wind farms. The article deals with six main health matters. Each one on its own could provide the basis for a serious objection to Winterbourne Wind's Environmental Impact Statement (EIS). But together they highlight the gross inadequacy of that EIS to recognise and address some serious health factors that could potentially involve legal implications.

The article is quite long, even though I've edited it considerably. But because its length might put off more readers than worthwhile, I've decided to include it as a submission to the NSW Planning Department, and instead present a slightly shorter version as a podcast for the Walcha community. For more go to:

<https://voiceforwalcha.com/podcast/>



Listen to Voice for Walcha's new podcast, as well as previous episodes, on Spotify or Soundcloud.

Pitt Son's REAL ESTATE & LIVESTOCK

SAM PAYNE 0428 667 404 | ANDREW BLOMFIELD 0428 667 402
RON VINCENT 0427 775 821 | TROY DAVEY 0427 157 557

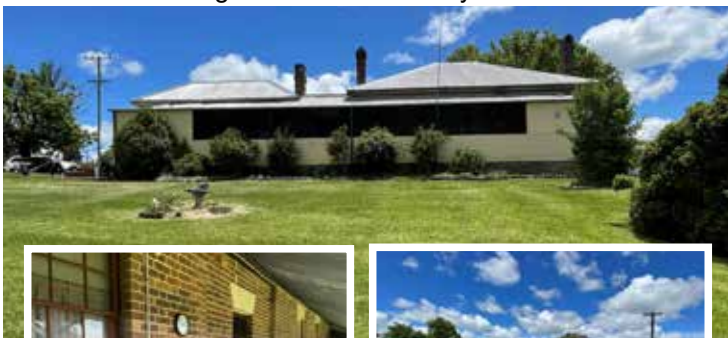
FOR LATEST
UPDATES



6777 2000 | www.pittsons.com.au

Home on 2051m2

This brick home offers renovators a great opportunity to bring some Walcha history back to life

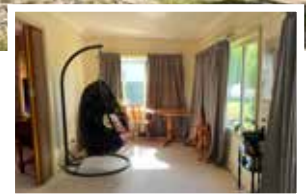


- Circa 1900 home consists of 4 bedrooms, kitchen, living areas, bathroom with shower.
- Home is filled with history with an old timber slab hut along side that is thought to be one of Walcha's original slab huts.
- Large verandah that spans the full length of the home with rooms opening on to it.

\$400,000

Sold home on large block

Three bedroom home on a large 1813m2 block



- Double street access
- 3 bedrooms all with built-ins
- Large living room with wood heater alongside a sunroom that captures the northern sun
- The back yard is a feature with rear access and a large 3 bay lockable shed that also feeds a 5000 gal water tank. Shed is fully concreted and has power connected

\$440,000

Winterbourne Wind Farm EIS



The NSW Department of Planning and Environment (DPE) has placed the application and accompanying Environmental Impact Statement (EIS) for the proposed Winterbourne Wind Farm project on public exhibition until Thursday 15 December 2022.

View the EIS on the DPE Planning Portal or in hard copy at Walcha Library and Uralla Library. Please make your submission on the proposal through the DPE portal.

Community drop-in sessions

We will host two information sessions for the community on December 2nd (12-4pm) and December 3rd (10am-2pm) at the Walcha Bowling Club. Please stop by to learn more about the proposed project and the findings of the EIS.

Why wind energy?

Wind energy is a clean and inexhaustible resource that generates zero pollution or carbon emissions during operation and is cheaper than new generation from coal and natural gas.

Community Benefit Fund

Vestas has committed to creating one of the largest community benefit schemes of any wind farm in Australia, providing a meaningful financial contribution that benefits the Walcha and Uralla communities.

Community Benefit Fund

Upfront Contribution

\$1,000,000

Annual Contribution

\$750,000

(up to 600 MW)

Potential Contribution

\$1,000/MW

(for every MW built over 600 MW)

Around

\$35 million

to the Community Benefit Fund over the expected project life (30 years)

Jobs and economic benefit



Substantial capital investment in Walcha and the broader New England region



Opportunities for local contractors and businesses to supply services to project construction and operation



Up to **400** new jobs to be created during construction



Up to **16** long-term service and maintenance jobs created during project operation



Training and development of new skilled labour in the region in the growing renewable energy industry



Upgrades to some local roads and construction of new access roads which may support emergency response activities in the future



View the EIS on the DPE Planning Portal



Read the Community Guide to the EIS



Read the project FAQ

Motorcycle Rally success and stimulus to the local economy

The buzz of bikes was everywhere in Walcha for this year's Walcha Motorcycle Rally. Approximately 1400 people (up from 1000 in 2021) came through the gates at the showground, including motorcyclists and spectators, who were invaluable to the success of the event. In town, the street procession and farmers' market attracted hundreds more to watch and hear the sea of bikes parade through town. Huge thanks must go to the hard working and dedicated Motorcycle Rally committee, to pull off this massive event for Walcha Council, along with the generosity of the wonderful sponsors and volunteers and everyone else who contributed in some way to the events success. The word is out that Walcha is the place to be and all feedback from motorcyclists is that they are returning next year and bringing their friends.

The aim of the event is to attract a large number of visitors from out of town to spend several nights in Walcha, who will return, tell their friends and visit at other times. The overwhelming positive feedback from visitors means that the event will continue to grow and attract significant visitation. We had attendees from all Australian states, many who had never been to Walcha before. Motorcyclists are a great demographic for visitation, as they can't carry much on bikes so have to purchase in town and they are also happy to camp, which is a great fit with Walcha's limited accommodation availability for large events. Many attendees have already rebooked accommodation for next year. The main events and activities are run on Friday and Saturday, with attendees starting to arrive on Thursday. Many stayed in Walcha for three to four nights. Some interesting statistics:

- Over the three-day period there were approximately 430 people staying per night (approx. 180 beds in Walcha plus 250 campers at the showground)
- 175 locals pre-purchased tickets
- More than 60 locals volunteered for the event

Large events like the Walcha Motorcycle Rally have significant costs to run and Walcha Council were successful in receiving a Regional Event Fund grant of \$20,000 and a Regional NSW Community grant of \$7500 to assist with costs. Generous sponsorship of \$7,150 was also received from local businesses. Continued growth and success of the event will be essential to ensure that the Walcha Motorcycle Rally can remain economically viable into the future.

Walcha Council would love to hear from you, if you have any feedback or suggestions for next year. Thank you to the community and businesses for supporting this major event to attract visitation to Walcha. Please follow the Walcha Motorcycle Rally Facebook page to find out more about the event and see the results of competitions held.



garden clippings

As Christmas is approaching it is a good time to prepare gardens so everyone is able to relax and enjoy the festive season.

There are few tasks to take into consideration. Mulching is certainly worth thinking about. If possible use the best quality mulch available. We are spoilt for choice with bark, lucerne hay, sugar cane, compost and straw. Gravel and stones are another type of mulch that enhance a garden keeping plant roots moist. It not only suppresses weeds but helps retain valuable moisture and nutrients for the soil and plants. Mulch should be 5 – 7.5cm in depth.



Avoid going any deeper with your mulch as this prevents air circulation to the soil and if there is excessive rain it could create mould. Aerate mulch after heavy rain as it can become clumpy and do more damage than good. Avoid 'volcano' mounding of mulch around trees. There is no advantage in doing this as it could cause collar rot at the base of the trunk and kill it. Over time mulch will break down and need replacing. Avoid using plastic as a base as organic mulches require contact with the soil to be able to breakdown.

Don't forget to provide some water for birds over summer too.

Now is the time to start enjoying all the hard work done in late winter to create a productive vegetable garden. Watering plants tops the list followed by weeding and fertilising. Flowering potato plants could be hilled to provide extra cover for your crop. Watch for mildew on tomatoes, zucchini and squash plants. Add liquid potash to your vegetable plants as this will encourage heavier cropping. Continue planting crops throughout summer to extend the production period.

The Walcha Garden Club Christmas meeting and luncheon is being held this Friday 2 December, at Phyllis Hoy's garden, 'Miltiades' 1606 Brackendale Road, Walcha. Cars will be departing McHattan Park at 9.30am. Please BYO chair, cup, plate of food to share and gift or plant to exchange. Members are encouraged to invite guests.

For enquiries please contact Di Bazeley 0403 464 865 or Diana Lisle 0429 799 083. Wishing everyone a happy, safe and wonderful Christmas and a very happy New Year.

Pictured top left: Mulch stops top soil drying out, can reduce watering by about 60 per cent and prevents weeds and weed seed germination. Bottom left: Care for your tomato, zucchini and squash plants to ensure you get the best possible crop this season.



45ft flat top • 45ft single deck cattle float • 26mtr B Double
19mtr mini B Double • Low Loader available for hire



BRIAN
Smith
TIMBER
TRANSPORT

Call us for
your large
Transport
needs

WALCHA
02 67772126
Bonnie Smith 0429 772 077
Brian Smith 0427 780 216

CHRISTMAS CAROLS

18th December
Anglican Church Lawn
6pm
Sausage Sizzle and Drinks

22nd December
Presbyterian Church
7pm
followed by supper

what's the goss

with AJ Cross



Talk about getting a tune up from my old mate Steph Sweeney after he read last weeks Advocate where he was reported to be a former Walcha-ite. He asked me how come he has lived in Walcha for 61 years going on 62 and is still paying rates for a house he still lives in and has done so for the last 37 years.

...

Stevie, the 'Golden Haired Wonder Child' then went on to point out that Bill Duncan who was mentioned in the same article, has lived in Walcha for approximately two years, was classed as a local and Steph was now a former Walcha-ite. Hope the boys had some success at the National Over 60's Veterans cricket in Geelong last weekend and earlier in the week.

...

Walcha/Urala cricket captain Ed Blomfield has had a dream start to the 2022/23 season where he is currently averaging an incredible 165.5 runs every time he strolls to the crease. Last Saturday Ed made an unbeaten 146 runs to back up his 66 a week before and his 119 at the start of the season.

...

Congratulations to local lawn bowler David Garth Clare who teamed up with Laurie Williams, Col and Brad Dade to win the annual Pasture Wonderland Tournament here last weekend with five wins and 34 ends. Well done to Graham Marshall, Andrew McGuffog, Jamie Kerr and Barry Kliendienst who were presented with the Ray Bird Memorial Trophy for Best Walcha Team after four wins.

...

The annual Walcha 'Oystermans' party day was held at the Hibbard Sports Club last Friday where a good number of current and former Walcha residents enjoyed prawns and oysters prepared by chief chef Wayne 'Traveller' Wilby and fish pieces which were washed down with a few beverages. A big pat on the back for all the organisers.

...

There should be a special mention made about the effort of Greg 'Doey' Partridge who made the 14 hour trip down from Wallaroo Outback Retreat where he currently resides to join in the festivities. Greg made his return trip on Sunday just in time for the birthday of his much better half Michelle on Monday. Fairly hectic weekend 'Doey.'

...

Group points, club points, players player and Best on Ground went to Mark 'Turbo' Peters who entertained our crew with his dance moves late in the evening while singer Graham Howle provided the music which in itself was a bonus at the end of the day.

thumbs



- 👍 To Lisa Kirton for all of her hard work and success with the Motorcycle Rally. An amazing job considering for nine months she didn't have another permanent staff member to assist her.
- 👍 To Walcha Twilight Markets. What a fantastic atmosphere. I hope there will be more.
- 👍 To NPWS for organising the Youdales Hut Open Day last Sunday. Managed a huge group of visitors in a friendly professional manner, organised very informative talks and provided fantastic food. Thank you very much.
- 👍 To Sam Bayley for the Twilight Shopping initiative last week – a great night for shoppers and stall holders.
- 👍 Thanks to all the stall holders and market attendees who made the Friday Twilights Markets such a successful event.

Contributions will be received in person, by phone or email and must be accompanied by your name and contact details. They will be printed at the discretion of the editor.

Saturday afternoon a few of us were in a betting syndicate where I suggested we get on 'Crosshaven' which unfortunately didn't happen much to the merriment of onlookers Darren Bird and Tom Rose who gave us plenty of cheek after 'Crosshaven' saluted.

...

No local golf last Sunday due to a number of players being away playing in other competitions but four did turn up for the weekly 9-hole event where Mark Hogan racked up 13 stableford points to win the prize. NTP on three went to Max Holstein. This Sunday is a Stroke Medal Round for a trophy donated by Ross King and then the following Saturday Ann Berry Memorial Three Person Ambrose is scheduled so you better start assembling your teams.

...

Seven local ladies headed to Werris Creek where they competed in the NSW Ladies Sandgreen Championship last weekend. Most successful competitor was Donna Martin who finished third in the Nett Division on 147 (73,74) while her sister Cheryl McDonald came 4th in the scratch section on 176 (92,84). In the Nett Division 2 Sally McCormack and Sue Partridge both tied for fourth position on 157. Julie Presnell, Caroline Street and Pauline Carter also flew the Walcha flag. Good on you girls.

...

Urala held their three golf opens last weekend where some Walcha players finished just off the pace. On Friday Jenny Lisle was counted out on 39 stableford points in a fiveway countback in the Vets Ladies Open. On Saturday Margaret Davidson and Owen Presnell were counted out on the impressive score of +11 in the mixed open where the 'Omen' collected NTP's on 3 and 15. On Saturday in the Mens Open, word has it Craig Morgan and Lee Fletcher finished third on a countback after registering +9 the same score as Nixon and Drew Bird, while Simeon Cross and Col Berry carded +8.

THE APSLEY Advocate

Time to starting
thinking about your

Christmas

Advocate Box Ads for
14 and 21 December

Book your Christmas Box ad by
4.30pm Friday 9 December to appear
in the final two Advocates for 2021.

\$50.00 for one week or \$80.00 for two weeks
(size 60mm w x 50mm h)

To book please call 6777 1111 or email
wtc@walchatelecottage.com.au



Walcha Bowling Club Fishing Club

Trophy Winners 2021/2022



Lady Champion Saltwater	Marissa Elliott	801 Points
Lady Heaviest Saltwater	Carol Bird	Flathead 50cm
Boy Champion Saltwater	Toby Rizzi	855 Points
Boy Heaviest Saltwater	Reid Withers	Flathead 47cm
Man Champion Freshwater	Graham Marshall	712.20 Points
Man Heaviest Freshwater	Graham Marshall	Rainbow 43.5cm
Man Champion Saltwater	John Brazel	2832 Points
Man Heaviest Saltwater	Gary Brazel	Flathead 61cm
Ray Bird Memorial Flathead	Darren Bird	Flathead 72cm
Paul Hoy Memorial Best Table Fish	SNR Graham Partridge	Flathead 48cm

Fish on board not winning a major trophy

Blackfish	Adam Tate	39cm
Bream	Kathy Rizzi	42cm
Rainbow Trout	Roger Jamieson	40cm



Above: Toby Rizzi and Reid Withers proudly display their trophies.

advocate sport



Bowls

Dads Army: Eight bowlers nominated for Thursday afternoon Dads Army and were put into two games of pairs. Barry Kliendienst and John McCormack had the biggest win when they defeated Eric O'Keefe and Geoff Salt 22 - 8. In the second game Jason Asmus and John Watts were 15 - 7 winners over Garth Clare and Warwick Hogan. Jason and John won the chooks and Tony Asmus won the raffle.

Ladies Bowls

Wendy Moore and Esther Hunt had a convincing win against Janice Rizzi, Jan Cross and Lyn Burnell in a game of triples last Thursday.

Janice Rizzi was in the winning team that played on Association Day in Uralla and she also won a spider.

Don't forget to put your name and a friend's name on the board by 8 December for our Christmas Party which is on the 15 December.

There will be social bowls tomorrow.

Wednesday Golf

It was a par event that we played on Wednesday for a trophy donated by Pip Monie. The course had dried out considerably resulting in some good scores. Our winner with a +3 was Prue Morgan and the sweepstakes went to Julie Presnell +2, Pip Monie +2, Margaret Davidson -1, Katie Smith -1 and Lyn Laurie on a countback -2.

NTP on 3 was Marg Parsons and no-one reached the sand on Hole 16.

Several girls also travelled to South West Rocks to play in a tournament and had a great few days. Those who were in the winners circle were Donna Martin, who won the Second Division nett on the first day and Penny King was runner-up in the C Division nett for the 36 holes. Well done girls.

Last weekend was the NSW Sandgreen Championships held out at Werris Creek in very warm conditions after what we have been experiencing. As the tournament had to be rescheduled due to flooding several weeks ago, the field was reduced to half the original number, which as it turned out was for the best, as it is only a 9 hole course, and because of the reduced numbers the play was not held up. Our star was Donna Martin who won Division 2 nett on the first day. Our congratulations go to Donna.

Walcha was announced as the host club for the 2023 NSW Sandgreen Championships on 21 and 22 October. Today we are playing stableford for Barb Mulligan's trophy. We also wish Pauline Carter the best of luck in the NSW Golf Women's Medal State final today in C Division, playing at Stonecutters Ridge.

Cricket

Walcha/Uralla v Ex Services

<u>Walcha/Uralla</u>	
J GRILLS lbw	46
E BLOMFIELD not out	146
D BOYD c ? b Sad Kazi	52
S RAFFERTY c ? Prodip	7
R GREWAL lbw J Power	42
C BOYD not out	37
Total 356. Extras 26. Bowling(overs/maidens/runs/wkts)	
Obayed 10-0-54-0, Prodip 8-0-64-1, Erroll 8-0-88-0, Sad	
Kozi 5-0-45-2, Mahbub 7-0-42-0, J. Power 7-0-55-1.	

Ex-Services

JARROD b Little	0
RATAM c & b Little	1
SAD KAZI c & b Grewal	2
MAHBUB c D Boyd b Hamilton	2
ERROL c & b Grewal	0
OBAYED b Little	11
FAHIM not out	0
Total 20. Extras 2. Bowling(overs/maidens/runs/wkts)	
Little 4-1-12-3, Grewal 3-1-4-1, Hamilton 1-0-4-1.	

Walcha/Uralla defeated Ex Services by 336 runs when they played their Second Grade match at Rologas No 1 field in Armidale last Saturday.

The visitors batted first after winning the toss and accumulated 356 runs at a loss of four wickets off their allotted 45 overs.

Leading the way was opener Ed Blomfield who belted sixteen boundaries on his way to an unbeaten 146 runs, while Daniel Boyd cracked three 6's and four 4's on his way to 52.

Opener Jay Grills made 46 runs, Randy Grewal chipped in 42 runs and Cooper Boyd contributed 37 runs.

The homeside were always going to be behind the eight ball right from the start as they could only field seven players after a number of their team mates had to step up a grade to fill in for clubmates that were unavailable.

Sinclair Little rearranged the furniture of Ex Services opener Jarrod Power with his first delivery before finishing up with 3/12 off his four overs.

His fellow opener Randy Grewal took 2/4 off three overs and Ben Hamilton snared the final wicket to fall.

The Third Grade game between Armidale City/UNE and Walcha/Uralla was called off due to lack of playing numbers.

church notices



ANGLICAN Walcha 4 December: 9.30am
Thanksgiving Service for the France family
All welcome. Phone 6777 2543 or email
walchaanglican@gmail.com

PRESBYTERIAN Walcha Sunday 9.30am.
All welcome. Phone 6777 2539.

CATHOLIC Sunday 10.00am Mass.



Positions Vacant

Part Time/Casual Milking & Calf Rearer

FARMING JOB OPPORTUNITIES

MILKING

- Flexible days, weekday and weekends
- Morning milking 4.00-7.30am
- Afternoon milking 1.30-5.30pm
- Includes collecting cows from the paddock
- Wash up of dairy and milking equipment after milking

CALF REARING

- Feeding of calves/teaching to drink
- Feeding of groups of calves, up to groups of 30 on milk bar trailer
- Diagnose and treat basic illnesses
- Maintain & cleaning of calf pens/ hutches



No experience required, just a love for animals!

WALCHA DAIRY

All enquires to Peter Notman Walcha Dairy on 0418 512 035

Positions Vacant

LINMAC ENGINEERING Fabrication Apprenticeship Opportunity

We would like to offer a position for an apprentice to join our team.

To be successful in this role you must:

- Be reliable and punctual
- Be keen and enthusiastic about the trade
- Great work ethic
- Team player
- Attention for detail
- Excellent communication and written skills

To apply please email a cover letter and your resume to:

enquiries@linmacengineering.com.au

or drop it into us at 211N Pakington St Walcha

Funeral Notice

WILLIAMS: Rita Ann 23rd November 2022

Formerly of Hill Street, Walcha.

Dearly loved wife of Max (dec'd). Loving mother and mother-in-law of Darryl and Rhonda, Maree and Tony, Cherryl and Ian, John (dec'd), Charlie and Kate, Wendy and Roderick and loved grandmother and great-grandmother of their families. Survived by her sister, Sister Margaret McKerrow.

In her 88th Year

Funeral Service to be held at St Patricks Catholic Church, Walcha
Thursday, 1st December 2022 commencing at 2:00pm followed by interment at the Walcha Beam Cemetery, Darjeeling Road Walcha.

Piddington's AFDA
6772 2288

Agistment Wanted

Agistment / Lease around Woolbrook, Niangala, Bendemeer or Walcha wanted for 15 cows and calves or a small mob of sheep. Phone 0473 878 144.

Raffle Results

Lady Bowlers raffle was won by Taddy Macfarlane and 2nd to Vanetta Cross. Thank you for your support.

Wanted

Cleaner 2 days a week, 3 hours p/day - \$80 per hour. Handyman/lawn-mowing person. Both must have ABN. Phone 0400 431 872.



Meetings

AMAROO LOCAL ABORIGINAL LAND COUNCIL
(ALALC)

Notice of General Meeting

20/12/2022, 11:00am at Amaroo LALC Board Room
– 36N Derby Street, WALCHA NSW 2354

AGENDA:

1. Welcome
2. Apologies
3. Minutes of Previous Members meeting
4. Financial Report
5. Amaroo LALC Budget 2021 – 2022
6. Memberships
7. Other business placed on the agenda prior to the commencement of the meeting.

All questions about this meeting should be directed to the Chairperson, Ms. Alena Stackman at the Amaroo LALC Office (02) 6777 1100 or via email office@amaroolalc.com.au during business hours.

AMAROO LOCAL ABORIGINAL LAND COUNCIL
(ALALC)

Notice of Annual General Meeting 2020/2021

20/12/2022, 1:00pm – 1:45pm at Amaroo LALC Board Room – 36N Derby St, WALCHA NSW 2354

AGENDA:

1. Welcome
2. Apologies
3. Minutes of Previous Members meeting.
4. Annual report on the activities of the ALALC for the 2020/21 financial year.
 - a. CLBP implementation report for the 2020/21 financial year.
5. Audited financial statements for the 2020/21 financial year; and
6. Other business placed on the agenda prior to the commencement of the meeting.

All questions about this meeting should be directed to the Chairperson, Ms. Alena Stackman at the Amaroo LALC Office (02) 6777 1100 or via email office@amaroolalc.com.au during business hours.

AMAROO LOCAL ABORIGINAL LAND COUNCIL
(ALALC)

Notice of Annual General Meeting 2021/2022

20/12/2022, 1:50pm at Amaroo LALC Board Room – 36N Derby Street, WALCHA NSW 2354

AGENDA:

1. Welcome
2. Minutes of Previous Members meeting.
3. Annual report on the activities of the ALALC for the 2021/22 financial year.
 - a. CLBP implementation report for the 2021/22 financial year.
4. Audited financial statements for the 2021/22 financial year; and
5. Casual Vacancy Election.
6. Other business placed on the agenda prior to the commencement of the meeting.

Please note: A Voting Member of Amaroo LALC is not entitled to vote, nominate, accept a nomination, or be elected to office in elections for Board Members if the voting member has not attended at least 2 meetings of the Amaroo LALC in the preceding 12 months as a voting member.

All questions about this meeting should be directed to the Chairperson, Ms. Alena Stackman at the Amaroo LALC Office (02) 6777 1100 or via email office@amaroolalc.com.au during business hours.

Public Notices



**PROPOSAL TO UPGRADE
AN EXISTING MOBILE PHONE
TELECOMMUNICATION FACILITY AT
123 TOPDALE ROAD WALCHA
NSW 2354 ON LAND DESCRIBED AS
LOT 93 ON DEPOSITED PLAN 41233.
RFNSA NO: 2354010, TELSTRA SITE
ID: BLACK SUGARLOAF
- BSLC - 69654.**

1. The upgrade comprises of removal of three (3) existing omni directional antennas at 23.90m and installation of four (4) new omni directional antennas (4G) at 23.90m.
2. The upgrade will include all ancillary works such as: combiners, diplexers, mounts, cable trays, feeders, cables. The internal and auxiliary works such as installation and connecting the new electronic equipment will be placed in the existing Telstra equipment shelter.
3. Telstra regards the proposed installations as a Low-impact Facility under Part 1, Item 5 of the Telecommunications (Low-Impact Facilities) Determination 2018 ("The Determination") based on the description above.
4. In accordance with Section 7 of C564:2020 Mobile Phone Base Station Deployment Code, we invite you to provide feedback about the proposal. Further information and/or comments should be directed to: Service Stream on behalf of Telstra, via phone at (07) 3068 6973, email to Telstra.submissions@servicestream.com.au, or at www.rfnsa.com.au, RFNSA No. 2354010 by **5pm 14th of December 2022.**

Walcha Hospital Auxiliary "High Tea"
Fundraiser. 10 Dec 1.30pm, \$25 pay on the day, BYO chair at the garden of Marg and John Cross, 219 Aberbaldie Rd. RSVP 4 Dec to Vic 0427 772 950 or vicete@aapt.net.au

DR GENEVIEVE FREER
Phone 6777 2068 0429 668 583

Live in helper required for elderly lady. Food and bed supplied, washing and ironing included. Phone: 0447 987 978.



Authors and illustrators bring Literary Festival to Walcha Central

Some of NSW' most inspiring authors and illustrators worked with students from Kindergarten – Year 10 at Walcha Central School's recent Literary Festival. Students explored story telling in a variety of forms including creating strong characters, manga illustration and intensive writing workshops. Students engaged with the authors and illustrators enthusiastically, producing a very high standard of work. Thank you to the Walcha Library for hosting afternoon sessions.



*Top of page:
Illustrator Matthew Lin with Years 7 – 8.
Above: Archie King, Patrick O'Connell and Max Martin show their book 'Go Duck!' to author Rowan McAuley.
Left: Corell Petuha.
Below: Matthew Lin presents an original Manga illustration to Teacher/Librarian John Stanton.*



trade and professions



ELECTRICIAN WALCHA
 LICENSED CONTRACTOR SINCE 1990
 "Not just that air conditioning guy"
Residential & Commercial work
Dave 0438 007 275
 SPLITZAIR (NSW) Pty Ltd 182154c Lic. EC41191

ANGUS CRAWFORD PLUMBING

0407 192 192
 A_C_P@outlook.com
 Licence. 313605C

CURTIS MOWERS & SMALL ENGINES

SERVICE + REPAIR

- Mowers
- Chainsaws
- Ride-ons
- Pumps
- Whipper snippers
- Chain Sharpening
- Bar Dressing

ALL TYPES

NOW SELLING

- New 30 & 40 Tonne Petrol Hydraulic **WOOD SPLITTERS** From \$3100 delivered
- Chainsaw chain

JAMES – 0488 020 762 (7 Days)

GRAPHIC DESIGN
 CORPORATE IDENTITY & LOGO DESIGN
 BRAND GUIDELINES • SIGNS • BOOKS & MAGAZINES
 ANNUAL REPORTS • CATALOGUES • BUSINESS CARDS
0418 281 489 • OSCARWAUGH@GMAIL.COM


Andrew: 0427 549 748
Toni: 0421 972 354

TRU BLU RECYCLING
CASH FOR CARS & TRUCKS
 ANY CONDITION
 TRUSTED LOCAL OPERATOR FOR OVER 15 YEARS
Mark 0412 310 650

A G W RURAL CONTRACTING
 GPS Equipped boom spraying
Andrew Wauch 0427 549 748

STORAGE CENTRE WALCHA
 20' Containers available for rent \$30 pw + GST
 Secure Undercover parking for cars, vans etc \$10 pw + GST
ANGUS 0427 787 332

Purcell CONTRACT SPRAYING
 LANDCRUISER UTE, 14M GRAYTILL BOOM
 GPS GUIDED AUTO STEER
Chris Purcell 0408 332 896

SELF STORAGE
 NORTH STREET – WALCHA
VARIOUS SIZED SHEDS
SECURITY FENCED
67773899 0428 653 307

Nick Moore PLUMBING & EXCAVATION SERVICES



Highly qualified and experienced plumber
 All aspects of Plumbing and Gas Fitting
 Wood heater installation
 Roofing and Guttering
 Gold Licence No 59555C

Nick 0418 691 306
 nickmoore203@yahoo.com.au
 Katy 0422 034 660

CHIROPRACTOR
K Samantha Goor
 B.Sc. Anatomy (NSW) M Chiroprac (Macq)
 Tuesday & Friday from 9.00am
6777 1340

Tree lopping
 Tree removal
 Truck & chipper
 Bobcat
 Post hole digger
 Trencher
 Woolshed cleaning
 Stockyard cleaning

 Scott Kermode 0427 100 889
 treetopservices@bigpond.com

MOBILE-FIX AUTO+AIR
 Mobile Repairer & Airconditioning Specialist
 Licensed Vehicle Repairer
 100% Satisfaction Guarantee
PATRICK STACE – WALCHA
 Mob. 0428 780 077 Ph. 6778 0595

DBE
DREW BIRD ELECTRICAL
Call 0456 185 304
 RURAL. DOMESTIC. COMMERCIAL.
 drewbirdelectrical@gmail.com Lic No.400883C

WALCHA LAW SOLICITORS
Sophie Thomson | James Levingston
 Conveyancing | Power of Attorneys
 Wills | Estates | Traffic Offences
 Local Firm - over 70yrs in the Community
02 6777 2066 info@walchalaw.com.au
 walchalaw.com.au
 INCORPORATING PATTERSON BYFIELD & BRYEN

DISCLAIMER LETTERS TO THE EDITOR are submitted on the condition that The Walcha Telecottage as the publisher of The Apsley Advocate may edit and has the right to, and license third parties to reproduce in electronic form and communicate these letters. They are published at the discretion of the Editor and Board. The Apsley Advocate is printed by The Walcha Telecottage, PO Box 116 Walcha NSW 2354. Phone 6777 1111 Fax 6777 1112. The Walcha Technology Co Operative Limited, the Editor and Staff of this Newspaper have published any article here-in in good faith and bear no responsibility in respect to the accuracy of the information contained in such article. Any person or persons publishing material in this Newspaper do so in the knowledge that they shall personally accept any responsibility for the accuracy and other correctness of such articles and also accept full responsibility for the legal consequences if it be found that the article contains any inaccuracies in the contents of any such articles. **DEADLINE MONDAY 4.30PM** Editor: Anthea Macpherson. Advertising and Sport: Rosalie Gibson, Megan Scrivener and Sue Jackson.

New England IT
ONSITE COMPUTER SERVICE + SALES
Tim Sutton 0414 874 523

Marchant

BROS. EST. 2000



A FULL RANGE OF AFFORDABLE TRANSPORT & EARTHMOVING
COMMERCIAL WATER CARTING
 Dam construction/maintenance, stick raking, road building,
 site prep, pipe laying and all timber work.

Check out our website for the full range of machinery,
 attachments and services available



Earthmoving and Heavy Haulage Transport
 Jason 0427 490 487

02 6777 2024 marchantbros@bigpond.com
 www.marchantbros.com.au

FOR ALL YOUR EARTHWORKS TRANSPORT AND ELECTRICAL NEEDS

ALL ASPECTS OF RURAL, COMMERCIAL & CIVIL WORKS



- Freight & Transport • Machinery Float • Stick Raking
- Road construction and maintenance • Trenching
- General Earthworks • Drilling • Mulching
- Dam maintenance and construction
- Erosion Control • Site Preparation • Electrical Works

Ian Notley 04188 29188 • Mark Notley 0422 637 686
 www.eteservices.com.au



WALCHA BOWLING & RECREATION CLUB

Monday-Wednesday 4pm – Close

Thursday 1 12.00pm – Close

9.00 for 9.30am Ladies Bowls.

1.00pm Social Bowls – all welcome

Friday 2 2.00pm – Close

2.00pm Bingo

5.30 for 5.45pm Twilight Bowls

6.00pm Bistro

- Sticky lemon chicken salad
- Grilled lamb open sandwich
- Beer battered fish
- Normal menu available, takeaway and delicious dessert.

6.00pm Tickets available for raffles

7.30pm Free Bingo

8.00pm Raffles drawn & Members Draw

Saturday 3 11.00am – Close

6.00pm Bistro

Sunday 4 11.00am – Close

12.00pm Bistro open

1.00pm Meat, fruit & veg raffles

**MEMBERS
 DRAW
 \$150**

YOU MUST BE A MEMBER FOR
 2022/2023 TO BE ELIGIBLE TO WIN

Tom's Cocktail
 of the week

OMA



Do you live in Walcha Shire?
 If so you **MUST** be a member to enter the Club.
 Social Membership \$15 – Full Membership \$105
 PHONE 6777 2077

**CHRISTMAS PARTY
 BOOKINGS
 0412 536 760**

LINMAC ENGINEERING

IF YOU NEED IT – We make it!

CUSTOM TRAYS AND TIPPERS



- Customer consultations to make sure we build to YOUR individual specifications
- Sandblasted and powdercoated
- Toolboxes, timber floors, tipper trays, water tanks ... whatever you need!

AUTHORISED HUSQVARNA DEALER



Check out our new facebook page:
 Linmac Engineering Walcha

211N Pakington Street WALCHA
 Phone 6777 2822 Email enquiries@linmacengineering.com.au