

# THE APSLEY Advocate

CIRCULATION 1810 P 02 6777 1111 F 02 6777 1112 wtc@walchatelecottage.com.au walchatelecottage.com.au

28 September 2022

**Friday 30  
September**



**AuctionsPlus**

**A/C RP Hutchinson**

**65**

**EU Angus & Murray  
Grey X Heifers**

**60**

**Angus & Murray  
Grey X Steers**

**Nutrien  Boulton's**

**Contact**

**Miles Archdale  
0428 660 326**

## FINANCIAL SERVICES



- **Rural and Commercial Finance**
- **Leasing**
- **Home Loans**
- **Insurance Premium Funding**

**KEL PENFOLD**

**6766 5309  
0427 667 118**

## In honour of Mathew



*Janet Dunbar pictured with the 2022 recipient of the Mathew Dunbar Memorial Award, CUO Callan Lawrence (centre)*

The memory of Walcha grazier Mathew Dunbar was first honoured by The Armidale School (TAS) in 1919, and on Friday 9 September CUO Callan Lawrence was presented with the Mathew Dunbar Memorial Award for 2022.

Mathew's mother, Janet Dunbar, was in attendance and presented the award to Callan at the 2022 Passing Out Parade – poignantly, the day prior to the anniversary of Mathew's death.

The Award is presented annually to an outstanding cadet who best fulfils the Army Cadet values of Courage, Initiative, Respect and Teamwork. The inaugural recipient in 1919 was CUO MD Braham, with SGT JD Miron and CUO HJ Catterall receiving the award in 2020 and 2021 respectively. Mathew himself was an active member of the unit, attending TAS from 1987 – 1992.

In 2019 the award was commissioned by the then Minister for Foreign Affairs, The Honourable Senator Marise Payne, with the Senator specifically requested that the award be made from timber sourced from the Walcha area.

2022 was the first year that the award was presented at the annual Passing Out Parade. Colonel Glenn Taylor, currently Commander of the NSW 2nd Australian Army Cadet Brigade reviewed the parade and remarked that it was the best cadet Passing Out Parade he had attended.



*Whilst at school Mathew was an active member of the TAS Cadet Unit.*

## Are you ready for spring spraying? Call in and see the range.

Silvan, Goldacres spray tanks and accessories.  
**IN STOCK** 10m, 12m manual crossover twin link booms, 800L, 1000L 3 point linkage spray tanks.



**6777 2588**

6 Aberbaldie Road, Walcha  
[www.wvs.com.au](http://www.wvs.com.au)





# OK EARTHMOVING

## Specialising in road construction & maintenance

• Stickraking • Dam building • Erosion works



Bulldozers • Excavator • Tip-truck • Vibrating Roller

**PH 6777 7430 FAX 6777 7448**

**PETER O'KEEFE: 0429 944 821**

## DO YOU WANT THE WAGYU F1 PREMIUM?

**Currently \$4/kg Lwt MORE than straight Angus!**

DO YOU WANT CALVING EASE?

PRICE OF BULLS TOO HIGH?

DON'T KNOW WHERE TO START WITH WAGYU?

WHY NOT START AT THE TOP WITH ROCFP00810 &

ROCFN01224 OPEN ALL F1 MARKETS



**SEMEN  
AVAILABLE FROM  
BULLS ABOVE TOP  
1% FOR MBS**

\$50/Straw based on 100 straws =  
\$5,000. All 100 heifers get 50 - 60 in  
calf and let your current bull clean up  
the rest.

**Let's talk Wagyu with  
Dave Woodley and make your  
F1 breeding program simple!**



**(02) 6769 2395 | 0427 335 631**  
**info@rocalawagyu.com**  
**'Mullabrook' Niangala NSW 2354 Australia**  
**www.rocalawagyu.com**

## around the traps



By **BRUCE RUTHERFORD**

Rain, rain and more rain is the prediction ahead for the spring and summer, with a third consecutive La Nina event forecast to stay around for about six months.

The district is very wet and for two weeks in a row, after two separate rain events, the flood fences have been washed away. Personally it's the highest I've seen the Apsley River in over a decade and last Thursday we only received around 50mm of rain over the already soaked catchment. People throughout the Northwest would have to be concerned about the next six months, with flooding already occurring from Tamworth to Wee Waa two consecutive weeks in row. No doubt there would have been some crop loss, but I think it's only the start of what's to come. Cereal growers would have to be concerned about the upcoming harvest, with a lack of labour and wetter than average season predicted, plus just being about to get the machinery onto paddocks to harvest the grain.

The district has well and truly kicked into gear with green fresh feed growing everywhere – the only thing lacking now is some more warmth. The district and all the New England tablelands will grow a mountain of feed and probably some of the biggest nodding thistles we've seen. A drive to Walgett early last week confirmed just how good the season is with huge amounts of clover and winter herbages still as fresh as the first day of winter. Traditionally the feed in the west would have hardened up by now, but I can see the season lasting longer than previous years. The old saying, "Get your cattle out of the west before Melbourne Cup Day", might be more like Christmas.

Stock losses have already been felt throughout the Northwest and around the district, with bloat and pulpy kidney primarily the main concern. Everyone should keep their 5-in-1 vaccines up on a routine basis which will help reduce the risk. Worms have kicked into gear a lot earlier this season on the back of some more temperate conditions over the past six weeks and aren't they causing some headaches. Lamb marking is just starting and the ewes are coming in very wormy. It's a tough gig for a ewe contending with a new born in wet weather and drench resistant worms – keep an eye on them.

The bull selling season is just about finished and what a prosperous season it was for seedstock producers, with records smashed across numerous breeds. It appears the buoyant bull market has carried over to the ram market throughout the central West with averages up and clearances high. Kerin Poll Merino lined up a whopping 519 rams last Friday, 100% clearance topping at \$18,500 for an average of \$4117. If this sale is a representation of the confidence in the sheep market then prepare to get blown away when the Tattykeel Australian Whites sale goes under the hammer this Wednesday.

While we are on sheep, if anyone has sold lambs or mutton over the hook recently then you would know about the extra scrutiny being placed around the cleanliness of the skins. Make sure your sheep are crutched, or not far off shears, prior to delivery to an abattoir or saleyard as deductions might be harsh.

Restocking for the spring and summer months are now well and truly underway with last week's store sale meeting hot demand. Tamworth fortnightly store sale yarded just under 3000 cattle which saw Angus yearling steers sell to \$2240. Angus cows with calves topped at \$4125, while you needed from \$1300 – \$1700 for a weaner heifer. AuctionsPlus listed 13,574 cattle in its eastern states sales on Friday and demand was high for quality and bloodlines. It's a clear pattern beginning to emerge in all markets that quality and breed are heavily sort after and producers are happy to pay for it. Quality Angus heifers to put straight to a bull topped at \$2740 for 435kg, while the majority sold between \$2300 – \$2600 for joinable weights. Restocking Angus weaner steers seem to be rare as hen's teeth if your chasing two or more decks and you will need in excess of \$2100 to play. PTIC heifers topped at \$3600 while cows with calves made in excess of \$4000 a unit, which to me seems to be where the value buying is at.



# Year 12 Graduation

On Wednesday 21 September, Walcha Central School's Year 12 cohort attended their farewell assembly, followed by a formal dinner at the Walcha Bowling Club later that evening.

Parents and friends were there to watch the Class of 2022 receive their portfolios and awards after completing 13 years of schooling. Special guest for the assembly was Mr Shaun Taylor, who had been the Class of 2022's Year Advisor whilst they were in Year 7 and 8.

Students were addressed by both Mrs Amanda Cooper, School Principal, and their current year advisor Mrs Samantha Bayley. Both reminded the outgoing students to stay focussed and do their best in their final exams – which are only a few short weeks away.

Congratulations and best wishes to the Class of 2022 – Dacian Andrews, Tyla Bloomfield, Rory Goodwin, Charlize Haling, Jacob Hamlin, Joscisca Matapakia, Teraia Marsters, Kaleb Mosiy and Timika Thornbury.



**Nutrien**  
Boulton's

## Stock and Property Watch

[www.nutrienharcourts.com.au](http://www.nutrienharcourts.com.au)

### Family Brick & Tile Home



- Three good sized bedrooms, two with built ins
- Bathroom consists of shower/bath/vanity with separate toilet.
- Large lounge/dining with wood heater
- Kitchen with new electric stove
- Fully fenced yard with separate garage

## \$350,000



### Are you thinking of selling?

- *There has never been more interest in residential real estate in Walcha as now*
- *Our team are fielding calls daily from qualified buyers looking to move to our small piece of paradise*
- *For an appraisal on your asset call us today.*

**To list your property please call:**

**Peta Carter**

Residential – 0407 350 781

**Bruce Rutherford**

Grazing and Small Properties –  
0428 660 328





**You're invited to**

# Youdales Hut

## Open Day

**Join the celebrations**

**Sunday 23 October**  
10am-2pm

Located deep in the Kunderang Brook Valley of Oxley Wild Rivers National Park, Youdales Hut represents an important part of the regions' pastoral and cultural history. Built by grazier Alan Youdale and Patrick Hogno in 1941, Youdales Hut served as a cattle mustering facility and accommodation for the Youdale family while they worked the gorge landscape.

After the Hut was destroyed during the 2019-2020 bushfires, NPWS staff, volunteers and contractors have rebuilt the Hut to its former glory using traditional bush carpentry methods.

The day will include a historical walk of the area with NPWS Ranger, presentations and a BBQ lunch.

**All attendees must have a low-range 4WD to access the site.**

**Bookings essential**  
Contact NPWS Walcha Office  
by 5pm Thursday 20 October  
(02) 6777 4700 or alternatively  
npws.nea@environment.nsw.gov.au

**For more information visit [nswparks.info/hut](https://nswparks.info/hut)**

Photo: The rebuilt Youdales Hut. (David Waugh/DPE)



# Walcha Pasture Walk

Morning tea provided

**Join us for a pasture walk:**  
Thursday 13th October 2022  
577 Emu Creek Road, Walcha NSW  
9:30am for morning tea  
10:00am - 12:30pm  
BYO Chair

**Key Topics**

- Benefits of pasture improvement
- Weed control for spring and summer
- Drones for weed control
- Upgrading farm water supplies

**RSVP 12 October 2022 to [emma.tilley@glenrac.org.au](mailto:emma.tilley@glenrac.org.au) or 02 6732 3443**

This event is supported by:



# letters to the editor

## Talk to your Neighbours

Walcha has proven time and time again, that as a community, together we are strong. Evidence of this is when the entire WALCHA community fought to save our council from amalgamation. We live in a community where there is respect, understanding and most importantly, communication. We don't burn off without talking to our neighbour, we don't put bulls on the boundary without talking to our neighbours, we don't bait for wild dogs without talking to our neighbours, nor do we have shooters on the property without talking to our neighbours.

Why, now, with new wind projects coming to Walcha have we stopped talking? People are looking across at their neighbours, wondering if they will be getting wind turbines. They are looking at their views, wondering if the ridges will be new industrial zones. They are hearing whispers of neighbours signing contracts. They are being shown maps of neighbouring properties with wind turbines. But nobody is talking, and we need to get the conversation back. Please – talk to your neighbours before the community collapses.

Landholders are considering signing contracts based on the inference that their neighbours have signed. Turbines marked on a map do not mean the landholder has signed an agreement. Don't assume your neighbour is getting wind turbines because developers may imply that they are. They are points on a map where developers would like to build turbines, and they are highly motivated to get landholders to sign contracts. There is nothing to stop you talking to your neighbours before signing a contract, regardless of your intentions.

**DO NOT SIGN A CONFIDENTIALITY AGREEMENT!** By doing so, this can remove the ability to have any external discussion with neighbours or collaborative negotiations for a better financial and legal outcome. As soon as you sign a confidentiality agreement, you are bound by those restrictive terms within the agreement. Be conscious of impacts on a potential sale and intergenerational transfer in the future, by giving "first right of refusal" to the developer. This eliminates your control on how much, and who you choose to sell your property to in the future. Consider what may happen in the future, and the rights you are giving away. These are unique agreements, make sure you are getting appropriate advice.

Landholders are being pressured to sign away rights to their freehold land, and their communicative freedom, potentially on the basis of misunderstandings about what is happening around them. We are potentially transforming our community into an industrial construction site for 5 – 15 years, and a changed environment for ever. We are letting the developer drive the agenda, and we need to maintain our community principles. Please don't let the developer stop you talking to your neighbours and your community. These are decisions that affect your land, your family and your neighbours for decades. Do not limit your knowledge to what you are being told by developers, whose interests are not aligned with yours. Please talk to your neighbours.

We are perhaps not all going to agree with each other on our view of the developments, but the only way we can remain strong as a community is to keep communicating with each other.

**Cameron and Rachel Greig for Voice for Walcha.**

## Emeritus Professor of Public Health not qualified in acoustics

Dear Editor, I am writing with reference to Simon Chapman's letter in the Apsley Advocate on 21st September 2022.

Despite, the impressive title, and the historical academic brilliance in undoing the tobacco industry, one should first enquire about the training and experience of Professor Chapman before rushing to embrace any of his opinions on wind turbines, and perhaps his motives in writing to our local community.

Professor Chapman has long engaged in battling the claims of noise intrusion, sleep deprivation and poor health by residents living close to wind farms. His main forte is public health and sociology. Unfortunately, Professor Chapman also doesn't have any qualification in acoustics and this does come through in his understanding of the issue. *Continued >*

For example, many years ago, I recall that Professor Chapman in the comments section of The Conversation website arguing that a wind turbine in suburban Sydney wasn't causing any health issues. Unfortunately, Professor Chapman failed to discern that the wind turbine in suburban Sydney spanned perhaps a metre or two in diameter as opposed to the wind turbines in rural areas that frequently span over 100m in diameter.

What makes wind turbine noise and infrasound potentially harmful? The answer is simple: firstly, consider the source of infrasound – not just the average noise figures; secondly, look at the research papers on wind turbine noise and how it compares to other industrial sources of noise. Infrasound can be compared to any other form of sound. It is the quality of what one hears, perceives and how that noise is interpreted. Compare the noise of wind chimes with a shot gun: On average the wind chimes make more noise than a shot gun fired once. Why do humans prefer wind chime noise over shotgun noise during sleep hours? The answer is obvious. The same can be said about wind turbines: the noise is impulsive, and research suggests it is by far amongst the most annoying sources of industrial noise. Research also suggests that infrasound from wind turbines can stimulate the fright-flight response of humans and animals, and it is worse when the noise is just below the audible level. This may explain the claims of sleep disruption and other symptoms around wind farms, raised stress hormones in animals etc.

With reference to the statistic on complaints to the National Windfarm Commissioner, I instead draw people's attention to the successful litigation against the Bald Hill's Wind Farm that concluded this year. The Bald Hills wind farm became operational in 2015. There has been plenty of opportunity for the National Windfarm Commissioner to have been engaged on the complaints of noise against the Bald Hill Wind Farm. Instead, several of the local residents felt it more important to pursue litigation rather than rely on the free services of the National Windfarm Commissioner. Any guess why?

As an alternate reading to Professor Chapman's book (which has only received 30,000 downloads internationally), I draw the reader's attention to another book "Wind Turbine Syndrome: A Report on a Natural Experiment" by Nina Pierpont. It was published in 2009 by a doctor who summarises case reports of people allegedly harmed by wind turbines; the book is being sold by multiple online book stores and gets a pretty good score on Amazon.

**George Papadopoulos, Kellys Plains NSW 2350.**

## NAPLAN success for St Pat's

St Patrick's Primary School recently received NAPLAN results for their Year 3 and 5 students and the results from assessments undertaken earlier this year show a high level of success for the school.

Reading results for Year 3 students had the school's highest ever NAPLAN mean score of 518.7, compared with the state average of 446.12, making St Patrick's one of the highest performing schools across the state. Out of the twelve Year 3 students who completed the NAPLAN Reading Assessment, 50% obtained a score of Band 6 or above, with two of these students achievements at Band 9 and above.

- Year 3 reading, writing, conventions of language and numeracy were well above the National average
- 100% of Year 3 students were above the National Minimum Standard (NMS) for reading
- 83% of Year 3 students were above the NMS for writing and numeracy.
- Year 5 reading, grammar and punctuation, as well as numeracy, were above the national average
- 88% of Year 5 students were above the NMS for reading, writing and numeracy.

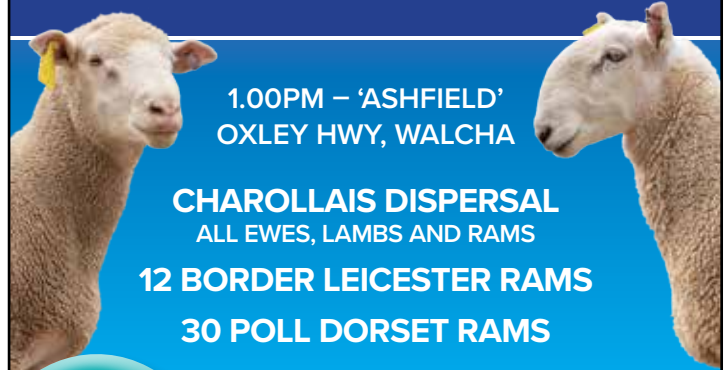
Students, teachers and parents must be congratulated on these outstanding results. It is a testament to the work of the St Patrick's professional learning community.

"I am very pleased with the journey we have made in improving learning and teaching outcomes that have contributed to this success in NAPLAN", said Dallas Hyatt, St Patrick's Primary School Principal.



# FOR SALE

## WED 12 OCTOBER



1.00PM – 'ASHFIELD'  
OXLEY HWY, WALCHA

**CHAROLLAIS DISPERSAL**  
ALL EWES, LAMBS AND RAMS

**12 BORDER LEICESTER RAMS**

**30 POLL DORSET RAMS**



**Sam and Kate Lisle**

02 6777 2605 or 0427 773 944

**Elders Walcha** ..... 02 6774 2600

**Tom Henry** ..... 0409 659 877

**Allan Laurie** ..... 0455 821 394



# PKF

## Wealth



Achieve the best outcome for your investment and retirement goals. Contact our highly qualified and professional financial adviser today.

**Greig Meyer** is a Certified Financial Planner and principal of PKF Wealth based in Tamworth and Walcha. For more information or to make an appointment contact one of our friendly staff now.

**Tamworth**

22-24 Bourke Street

Tamworth NSW 2340

**Walcha**

12 Derby Street

Walcha NSW 2354

Greig Meyer is an Authorised Representative of PKF Wealth TMW Pty Ltd

ABN 21 154 894 130 AFSL No. 515733



# Unexpected detour

When Luke Patch headed off on his two-month charity ride from Lismore on 19 September, he wasn't planning on a detour into Walcha.

Cycling from his home town of Lismore down to Dover Tasmania over two months, the easy option would be to ride straight down the highway, but for Luke that would be boring. Instead he has chosen to take the scenic route through back roads and National Parks.

While on his travels from Bellbrook to Mooraback Campground, Luke broke a screw that holds his cleat to his shoe, making climbing hills challenging – pedalling on your heel is not easy! Last Friday on passing Red Hill Organics Farmstay in Yarowitch, good samaritan Bill Croll stepped in to lend a hand and drove Luke and his bike into Walcha to see if they could do some running repairs. After they sifted through numerous screws at Richardson's Hardware and Ag, Bill took Luke to Agfix Mechanical where Tom Ireland completed the repairs. When we spoke to Luke he was planning on spending the night in Walcha before setting off on his journey Saturday morning.

Partnering up with the charity Gotcha4life, Luke hopes to create awareness of the important mental fitness and suicide prevention work they do, while hopefully raising some funds to help support the community programs they run.

If you would like to follow Luke's journey he is carrying a tracking device for the duration of his 3,000km trip. Visit [www.linktr.ee/lukepatch](http://www.linktr.ee/lukepatch) to view the live map and track his journey, or follow Luke on Facebook.



# Nathan and 'Buckol Megan' hard to beat at Bonalbo



*Nathan Brown and 'Buckol Megan' with their futurity trophy, alongside his dad Phillip Brown with 'Nil-Rain Music'.*

On the 17 and 18 September, local dog trainer Nathan Brown and his father Phillip competed at the Bonalbo Working Dog Trials.

The Bonalbo Trials, originating in 1950, were initially just a bit of fun at the local show, but have since taken hold attracting the best from across the country. Known as the birthplace of the working cattle dog trials, with the town even boasting a statue honoring the role of these amazing canines, you are definitely considered at the top of the game when you place here.

So, needless to say when Nathan and his hound 'Buckol Megan' won three events and finished runner-up it was more than an impressive result. The dynamic duo won the Futurity with a two round total of 195 ( $97^{1/2} + 97^{1/2}$ ), the Maiden with 192 ( $95 + 97$ ) and the Novice on 193 ( $95 + 98$ ). To add to their haul for the day, they placed second in the Open with a total of 172 ( $89 + 83$ ).

While Nathan cleaned up, his father Phil Brown combined with 'Nil-Rain Music' to place fifth in both the Futurity and Maiden. All-in-all a very successful weekend for them both.



45ft flat top • 45ft single deck cattle float • 26m B Double  
19m mini B Double • Low Loader available for hire



**BRIAN**  
**Smith**  
**TIMBER**  
**TRANSPORT**

Call us for  
your large  
Transport  
needs

**WALCHA**  
**02 67772126**

**Bonnie Smith 0429 772 077**  
**Brian Smith 0427 780 216**



# Annual Garden Luncheon

Friday 16 September saw over 110 people attend the Walcha Garden Club luncheon held at the Walcha Golf Club.

Guest speaker, Simon Rickard from Trentham Victoria, gave a presentation on how we can learn to adapt our gardens to suit our ever changing climate by introducing natives alongside exotic plantings. It is amazing to think that Melbourne is now landscaping

with trees and shrubs which normally grow in Dubbo.

Simon describes himself as a gardener and has not trained in botany or horticulture. He was Head Gardener at 'Heronswood' and 'Garden of St Erth', home of the Diggers Club. His vast knowledge on all aspects of gardening certainly enlightened everyone who attended.



Above: Sandra Holmes – North West Zone Coordinator, Walcha Garden Club's Margaret Cawley, Diana Lisle and Di Bazeley, with Guest Speaker Simon Rickard.  
Left: Gwen Higgins, who was celebrating her birthday, received a beautiful bunch of flowers.

## thumbs



- 👍 To the wonderful Garden Club Luncheon. Thoroughly enjoyable.
- 👍 To the 93 Camper Trailers visiting our town. Walcha businesses appreciate you!
- 👍 To the excellent crew at Walcha Telecottage. Thank you for giving equal space to differing views on the wind project debacle.
- 👍 To the new book shop in thebigblackbuilding. An awesome selection and great prices!

**Contributions will be received in person, by phone or email and must be accompanied by your name and contact details. They will be printed at the discretion of the editor.**

**Pitt Son's** REAL ESTATE & LIVESTOCK

SAM PAYNE 0428 667 404 | ANDREW BLOMFIELD 0428 667 402  
RON VINCENT 0427 775 821 | TROY DAVEY 0427 157 557

FOR LATEST  
UPDATES



6777 2000 | [www.pittsons.com.au](http://www.pittsons.com.au)

## ITS ON AGAIN ....



## Pitt Son's Online Auction

### COMING UP IN MID NOVEMBER

PLEASE CONTACT PITT SON'S STAFF TO LIST YOUR ITEMS

Catalogue will be available closer to the date to view at AuctionsPlus or Pitt Son's web site.

# Keeping an eye on men's health in rural NSW

Rotary Men's Health Education Rural Van (MHERV) will be in Walcha next week

An initiative of the Rotary Club of Warners Bay in collaboration with local Rotary clubs or other community groups, the Rotary Club of Walcha will be hosting MHERV next week.

**WHEN:** Wednesday 5 and Thursday 6 October  
**TIME:** 9.30am – 3.30pm  
**WHERE:** Corner Fitzroy and Derby Street, Walcha

With the support of the Royal Freemasons Benevolent Institution (RFBI) a Registered Nurse undertakes free basic check-ups for 'blokes'. Ladies are also welcome to have a free health check.

The purpose-built van is staffed by a male nurse Bill Power and offers free of charge health screening services for Blood Pressure, Cholesterol, and Diabetes. The consultation takes about ten minutes and provides immediate results, helping to improve health outcomes for men.

Bill has the knack of being able to relax even the most stressed clients. During the confidential consultation, he takes the opportunity to also chat about other health related concerns, including state of mind, in a relaxed, confidential and informal setting.

Bill submits a daily report to the program management team at Rotary Club of Warners Bay, from which statistics are gathered. Over the last four years results have averaged approximately 4% who require urgent attention, around 40% are advised to follow up with their GP in the next week, while 56% are encouraged to keep up the good work.

Over the past four years the van has seen nearly 11,000 people and has

potentially saved over four hundred people from a severe health event. So don't walk past, come in and say 'Hi' to Bill and take the opportunity to get a free health check.



Registered Nurse Bill Power will be in Walcha next week with the MHERV



**BROOKLYN  
QUARRY**

## Positions Available

Register your interest today  
with your resume.

Experienced Excavator Operator

HC Truck Drivers wanted

## Local Walcha Quarry OPEN for business

Brooklyn Quarry products are made from hard rock Basalt.

Products include:

- A full range of gravels / road base products
- Products tailored to your exact requirements
- Gabion rock all sizes
- Over size rock for specialised jobs and landscaping

Brooklyn Quarry is working with locals and businesses across NSW, supplying products for residential, farm or commercial orders. With prompt delivery to site. There's no order too big or too small for us.

Our products have been professionally tested by third parties and are proven to be a superior product, highly graded and perform well above industry standards.

If you want a product that will stand the test of time, give us a call to discuss your next project.

SCOTT@BROOKLYNQUARRY.COM.AU

0434 011 570

1643 OXLEY HWY, WALCHA RD. NSW  
(BY APPOINTMENT ONLY)

WWW.BROOKLYNQUARRY.COM.AU



# Wondering what's going on at the Showground?



If you have been driving past the Walcha Showground and wondering what is going on, wonder no more. The Australian CamperTrailers Group have converged on our town for their 2022 National Get-together. The event, which commenced on Monday 26 September, was officially opened by Walcha Mayor, Eric Noakes at the showground.

Near 100 camper trailers will be spending this week in Walcha and undertaking numerous organised activities while they are here. These include an Auction Night that was held Monday night, with our very own Mat Larkings as auctioneer, along with a Trivia Night on Tuesday. Proceeds from both of these events will go to the Walcha Community Support Group.

On Wednesday, Community Day, the group will enjoy a delicious breakfast cooked by the Walcha Lions Club, then from 9.00am stalls and displays by local organisations will be available for them to view in the Showground Pavilion. In the afternoon the CamperTrailer Group will head to the Bowling Club where they will enjoy a game or two of 'Barefoot Bowls', followed by an evening meal at the bistro.

Thursday the Group have several other organised activities planned, with their annual Get-together wrapping up on Friday.

At each Get-Together the group aim to purchase all they need within the nominated town and patronise as many local business as possible – a wonderful initiative and something that small rural towns such as Walcha are more than appreciative of. While here they will also hold a raffle, with proceeds donated to Walcha Central School's Breakfast Club.

As a community we thank them for their support and hope they have an enjoyable stay.

**telecottage**  
WALCHA

## Design, print and secretarial services

- Photocopying
- Laminating
- Business Cards
- Stationery
- Invoice / Receipt books
- Labels
- Sale Catalogues
- Brochures
- Resumes

## Publishers of the Advocate



**Phone 6777 1111**

E [wtc@walchatelecottage.com.au](mailto:wtc@walchatelecottage.com.au)

**advocate**sport



## Tennis

Thanks everyone for a great 2022 Spring Eskimo Comp. Our winners were: Division 1: Dennis Wall, Division 2: Emma Wauch, Division 3: Adam Barillaro and Division 4: Peter Tape. Congratulations to these four players. Special thanks to all our floaters. This Comp could not have gone ahead without you! Thanks to Ann and Troy Pendlebury who went above and beyond travelling in from Woolbrook to keep the comp going. Get your names in for the main Spring Comp starting on Tuesday 11 October. The next Club meeting will be held on Monday 10 October at 6.30pm. See you all at the net soon.

## At the Nineteenth

A Stroke Medal round was played, for a trophy donated by Andrew Crawford last Sunday and it was David Sweeney who collected the chocolates after he carded a six over par 76, which equated to a 65 nett. He also won the A Grade mug, best scratch score and took out the NTP on 3.

B Grade went to Jock McLaren 68 nett, while John McCormack claimed the C Grade mug with a 73 nett. Sweepstakes to Jeff Etheridge and Michael Stackman both 70 nett. Jamie Bowden 71 and Don Brooks 74 on countback from Jenny Lisle, who won the putting competition after engaging her flat stick on 22 occasions – but only after counting out Willy Brennan. Long drives sponsored by Tony 'Backhanded Larry' Asmus were caressed by Michael Stackman (A) Jeff Etheridge (B) and Charlie McLaren (C), who also received the coveted 'Pink Shirt' for most putts after he registered a rather healthy 38 jabs. NTP on 9 went to Willy Brennan. Last Sunday competitors were required to play the front nine holes twice as the back nine holes were deemed unplayable due to rain. Last Saturday Allan Laurie won the weekly 9 Hole Competition after racking up 14 stableford points to pip his son Lachlan by a point, whereas the Ladies winner was Sue Partridge on 12 points, who also picked up the NTP on 3. Runner-up was a three way countback to Margaret Parsons. This Sunday is a 4BBB Mixed where John and Janie McLaren are in charge of supplying the prizes.

## Wednesday Golf

It was a trophy donated by Cheryl McDonald that we played for last Wednesday. It was a stroke round, plus putting, monthly mug and the sixth Medal round for the year. Prue Morgan was the winner on the day with a great round netting a score of 67 points. First sweepstakes were taken out by Pauline Carter with a 68 and second sweepstakes went to Cark Street with 71, counting out Deb Richards also with 71. NTP on hole 3 was Jenny Lisle and Simone Sweeney was the winner of the putting with 24 putts. The Division 1 winner was Vicki Heffernan with 74. Division 2 went to Cark Street with 71 and Prue Morgan took out the Division 3 with 67. Today we are playing a par event for Rose Baumer's trophy.

# What's the Goss

With A.J. CROSS



**The Walcha/Uralla Rugby League Club** held their presentations at the Uralla Golf Club last Friday night, where a number of players and officials were recognised for their efforts throughout the 2022 Group 19 season. Jillaroes Captain Nicola Hoy took out the girls Players' Player and the Best and Fairest, after she polled 15 points to finish ahead of Rachel Green 12, Caitlin Hollis 9 and Jojo Matapakia 7.

...

**Most improved Jillaroe was Kirra Murphy** and the Josh Lordanic Coaches Award went to Jorjie Ledingham. Tigerroos Skipper Duncan Elks won the blokes Best and Fairest, Harley Cox picked up the Most Improved, Bryce Johnson finished Players' Player, whereas the Scott Swain Coaches Award was presented to Zac Walters. Club Persons of the Year went to Sally-Ann Hoy, Jenny Haslem and Maree Brazel. Former local resident Quinton Dillon was the Uralla recipient.

...

**The Walcha Cricket Association** held its Annual General Meeting last week where long time local servant of the game Wayne Boyd took over as President from Cameron Wood, who drops back a cog to Vice President. Secretary remains Dan Hunt, as does Treasurer Ed Blomfield and Publicity Officer/Recording Secretary A.J. Cross. Former curator Wayne Boyd has handed over the reigns to his son Daniel, but no doubt 'Pothole' will still be the one to give his young fella plenty of helpful hints.

...

**At this stage it is hoped there will be a Walcha Cricket competition** despite challenging player numbers. Another option is to enter a couple of teams into the Armidale competition – maybe in second or third grade. If you are interested in either proposal please contact any of the hierarchy to let them know of your intentions as soon as possible – if not sooner!

...

**Walcha Swimming Club** also held their AGM last week where President Yolanda Mooney was returned to her position, Anna Mulligan is Secretary, Trina Fletcher Treasurer and Angus Warden Vice President. Alex Blake will be marshall, David Swain starter, Patron is Bruce Hunt, Race Secretary is Anna Mulligan, while former young Swimming Club official Arianne Taylor will share race recording duties with president Yolanda. Publicity officer is A.J. Cross.

**Congratulations to former Flippers President Angus Warden** who was awarded with life membership when the club held their AGM last week. All the other Presidents have handled their duties efficiently since the Swimming Club commenced 50 years ago, but Gus has gone over and above what was required, taking the Flippers to the level they enjoy today. To receive life membership at the same time as Angus makes mine just that little bit more special.

...

**My Cousin Gregory Cross** texted me last week informing me he had just played a round of golf at Coolangatta/Tweed Heads with a bloke by the name of Tony McLean who had worked at the CBA/NAB bank here from 1961 to 1965. Tony informed 'Muscles' that he played Rugby on Saturdays and League on Sundays which was a bit before my time, but some locals may remember him.

...

**No doubt it will be on for young and old** when Penrith take on Parramatta in the NRL Grand Final this Sunday – including at Cross Brothers Butchery. Chief butcher Jonny follows the Panthers while his old man and shop assistant Simeon supports the Eels. Maybe a schooner or two many change hands on the result.

...

**Personally I reckon Penrith** have been the team to beat this season and nothing has changed with regard to that. On the other hand it's been a long time between drinks (36 years in fact) for Parramatta since they won their last competition, so it wouldn't be that bad if they finally added another title to their list of four, (1981 – 83 and 1986.) Never thought I would say or think it but – *Go Parramatta!!*

## LONG WEEKEND DEADLINE

Please submit all stories and advertising  
this week if possible.

Tuesday morning by 9am for sports reports.

[wtc@walchatelecottage.com.au](mailto:wtc@walchatelecottage.com.au)

## advocateclassifieds



### Death Notice

#### Wall: Gwenda Jean

20th September 2022

Loving wife of Aidan. Beloved sister,  
sister-in-law and aunt.

**Aged 80 years**

Funeral to be held at Piddington's Funeral  
Home, Uralla Road Armidale.

Wednesday, 28th September 2022  
commencing at 10am.

**Piddington's AFDA**  
**6772 2288**

### Public Notices

**Walcha Tennis Association Spring Comp**  
starting Tuesday 11 October. Nominations  
close 1 October. Contact Trev 0459 799 119  
or Hyde 0427 780 391, or post on the Tennis  
Club Facebook page.

**DR GENEVIEVE FREER**

Phone 6777 2068 0429 668 583

#### Zenziwear

Opening in October for a limited time  
Locally made and locally sourced  
Eco dyeing, felting and  
other handcrafted goods

### Raffle Results

**Niangala Hall Street Stall:** 1st Tim Norton,  
2nd Sally Munday, 3rd Marg Partridge. Thank  
you Walcha and surrounding communities  
for your never-ending support.

### Garage Sale

**Long weekend** from 8.00am Saturday.  
Outdoor items, household, pots and plants,  
plus more. 166w Evans Street.

### For Sale

**Layer pullets** All breeds, 20 wks. Delivered  
Friday 21 October. **Ph: Jim 0428 194 105.**





## A G W RURAL CONTRACTING

GPS Equipped boom spraying  
Andrew Wauch 0427 549 748

## STORAGE CENTRE WALCHA

20' Containers available for rent \$30 pw + GST  
Secure Undercover parking for cars,  
vans etc \$10 pw + GST

**ANGUS 0427 787 332**



## M L MASSAGE THERAPY

Remedial and Sport Massage

MOBILE  
TREATMENTS  
AVAILABLE

MADDIE LANCE  
TUES TO FRI 9AM - 6:30PM  
**0432 635 994**

## Nick Moore PLUMBING & EXCAVATION SERVICES



Highly qualified and  
experienced plumber  
All aspects of Plumbing  
and Gas Fitting  
Wood heater installation  
Roofing and Guttering  
Gold Licence No 59555C

**Nick 0418 691 306**

nickmoore203@yahoo.com.au  
Katy 0422 034 660

## ENGINEERING

**John Wall**

• Stock floats • Feeders • Sheep & cattle  
yards • Steel framed sheds & mobile welding

**6778 0588 • 0428 778 087**

Tree lopping  
Tree removal  
Truck & chipper  
Bobcat  
Post hole digger  
Trencher  
Woolshed cleaning  
Stockyard cleaning

Scott Kermode  
**0427 100 889**  
**TREETOP**  
services

treetopservices@bigpond.com

## STACES FAST FREIGHT

Delivering  
Tamworth – Walcha  
**0429 608 409**



## MOBILE-FIX AUTO+AIR

Mobile Repairer &  
Airconditioning Specialist

Licensed Vehicle Repairer  
Lic.No.46696 RTA Lic No. AU22616  
**PATRICK STACE – WALCHA**  
Mob. 0428 780 077 Ph. 6778 0595



## CURTIS MOWERS & SMALL ENGINES

### SERVICE + REPAIR

- Mowers
- Chainsaws
- Ride-ons
- Pumps
- Whipper snippers
- Chain Sharpening
- Bar Dressing

ALL  
TYPES

### NOW SELLING

- New 30 & 40 Tonne  
Petrol Hydraulic

### WOOD SPLITTERS

From \$3100 delivered

- Chainsaw chain

**JAMES – 0488 020 762 (7 Days)**



## ANGUS CRAWFORD PLUMBING

**0407 192 192**

A\_C\_P@outlook.com  
Licence. 313605C

## GRAPHIC DESIGN

CORPORATE IDENTITY & LOGO DESIGN  
BRAND GUIDELINES • SIGNS • BOOKS & MAGAZINES  
ANNUAL REPORTS • CATALOGUES • BUSINESS CARDS

**0418 281 489 • OSCARWAUGH@GMAIL.COM**

## SELF STORAGE NORTH STREET – WALCHA VARIOUS SIZED SHEDS SECURITY FENCED

**67773899 0428 653 307**

## ELECTRICIAN

**Ian & Cheryl Cameron**

- Installations • Repairs
- Household wiring

**6777 1190** Lic. 46478C

## CHIROPRACTOR

**K Samantha Goor**

B.Sc. Anatomy (NSW) M Chiroprac (Macq)

Tuesday & Friday from 9.00am

**6777 1340**

## SPLITZAIR WALCHA

- AIR CONDITIONING &  
ELECTRICAL
- Domestic & Commercial
- Split system specialists



**Dave 0438 007 275** Lic. 182154c

## JK PACIFIC TILING

WALL & FLOOR TILING  
WATERPROOFING

**0419 972 129**

Email: jake.kerby@hotmail.com  
ABN: 76781656814 Licence no: 335540c

## TRADE PAGE ADVERTISEMENTS

Small \$30.00 p/week  
Large \$40.00 p/week

## church notices



**ANGLICAN** Walcha Sunday 2 Oct,  
9.30am Kids Games Service at Anglican  
Church. All welcome.  
Contact us on 6777 2543 or email:  
walchaanglican@gmail.com

### **PRESBYTERIAN**

**Walcha:** Sunday – 9.30am Everybody  
welcome to join us.

For info call Graham Barnes 6777 2539

**CATHOLIC** Sunday 10.00am Mass

**DISCLAIMER** LETTERS TO THE EDITOR  
are submitted on the condition that The Walcha  
Telecottage as the publisher of The Apsley Advocate  
may edit and has the right to, and license third parties  
to reproduce in electronic form and communicate  
these letters. They are published at the discretion of  
the Editor and Board. The Apsley Advocate is printed  
by The Walcha Telecottage, PO Box 116 Walcha NSW  
2354. Phone 6777 1111 Fax 6777 1112. The Walcha  
Technology Co Operative Limited, the Editor and Staff  
of this Newspaper have published any article here-in  
in good faith and bear no responsibility in respect to  
the accuracy of the information contained in such  
article. Any person or persons publishing material in  
this Newspaper do so in the knowledge that they shall  
personally accept any responsibility for the accuracy  
and other correctness of such articles and also accept  
full responsibility for the legal consequences if it be  
found that the article contains any inaccuracies in the  
contents of any such articles.

### **DEADLINE MONDAY 4.30PM**

Editor: Anthea Macpherson. Advertising and Sport:  
Rosalie Gibson, Megan Scrivener and Sue Jackson.

# Marchant BROS. LTD. Est. 2000



A FULL RANGE OF AFFORDABLE TRANSPORT & EARTHMOVING  
**COMMERCIAL WATER CARTING**  
 Dam construction/maintenance, stick raking, road building,  
 site prep, pipe laying and all timber work.

Check out our website for the full range of machinery,  
 attachments and services available



**Earthmoving and Heavy Haulage Transport**  
**Jason 0427 490 487**  
 02 6777 2024 marchantbros@bigpond.com  
 www.marchantbros.com.au

## WALCHA **BOWLING & RECREATION CLUB**

2022/23  
 Membership  
 now due

**Wednesday 28** Open 4pm

**Thursday 29** Open 12pm

9.00am Normal trading  
 1.00pm Social Bowls – all welcome  
 1.00pm Ladies bowls

**Friday 30** Open 2pm

9.00am  
 2.00pm BINGO  
 6.00pm Bistro  
 • Curried Prawns & Rice  
 • Orange Chicken  
 • Aussie Steak Sandwich  
 8.00pm Fruit & Veg raffles  
 followed by Members Draw

**Saturday 1** Open 11am  
 6.00pm Bistro

**Sunday 2** Open 11am  
 12.00pm Bistro open  
 1.00pm Meat, fruit & veg raffles

**Twilight Bowls**  
 Starting 7 Oct 5:30pm  
 sheet on board for names

**MEMBERS DRAW**  
**\$250**  
 YOU MUST BE A MEMBER FOR  
 2021/2022 TO BE ELIGIBLE TO WIN

**TOM'S**

COCKTAIL OF THE WEEK

*Cosmopolitan*



Monday to Wednesday 4.00pm to close  
 Thursday 12 midday to close  
 Friday 2.00pm to close  
 Saturday and Sunday 11am to close  
**Phone 6777 2077**

Do you live in Walcha Shire?  
 If so you **MUST** be a member  
 to enter the Club.  
 Social Membership ..... \$15  
 Full Membership ..... \$105

FOR ALL YOUR EARTHWORKS TRANSPORT AND ELECTRICAL NEEDS



Freight & Transport

Machinery Float

Road building and maintenance

Dam maintenance and construction

Firebreaks • Drilling • Trenching • Stick Raking

Mulching • Fence Clearing • General Earthworks

Erosion Control • Site Preparation

Electrical • Pipe Laying

10ft Slashing

Ian Notley 04188 29188

Mark Notley 0422 637 686

Office 02 6777 6595



ALL ASPECTS OF RURAL,  
 COMMERCIAL & CIVIL WORKS  
 www.eteservices.com.au



Wayne Hoy: 0427 281 060  
 Matthew Hoy: 0427 322 640  
 Aaron Bullen: 0409 776 340

**SPRAYING  
 SOWING**

**EXCAVATING  
 EARTHMOVING**

*GPS & Auto Steer Equipped*

- Komatsu PC300 Excavator
- Cat 324 Excavator
- Cat D6N Dozer
- 2000ltr Quikspray Trailers
- Casotti's
- 4 x4 Tip Truck
- 4x4 Trucks & Boomsprays
- Full auto Rate Control
- GPS & Autosteer
- 4x4 Tractors GPS Equipped
- 20 & 24 disc Williams Seeders
- Fencing & Rural Contracting



# How much is too much?

The Cumulative Effect - In progress and proposed renewable projects in and around Walcha

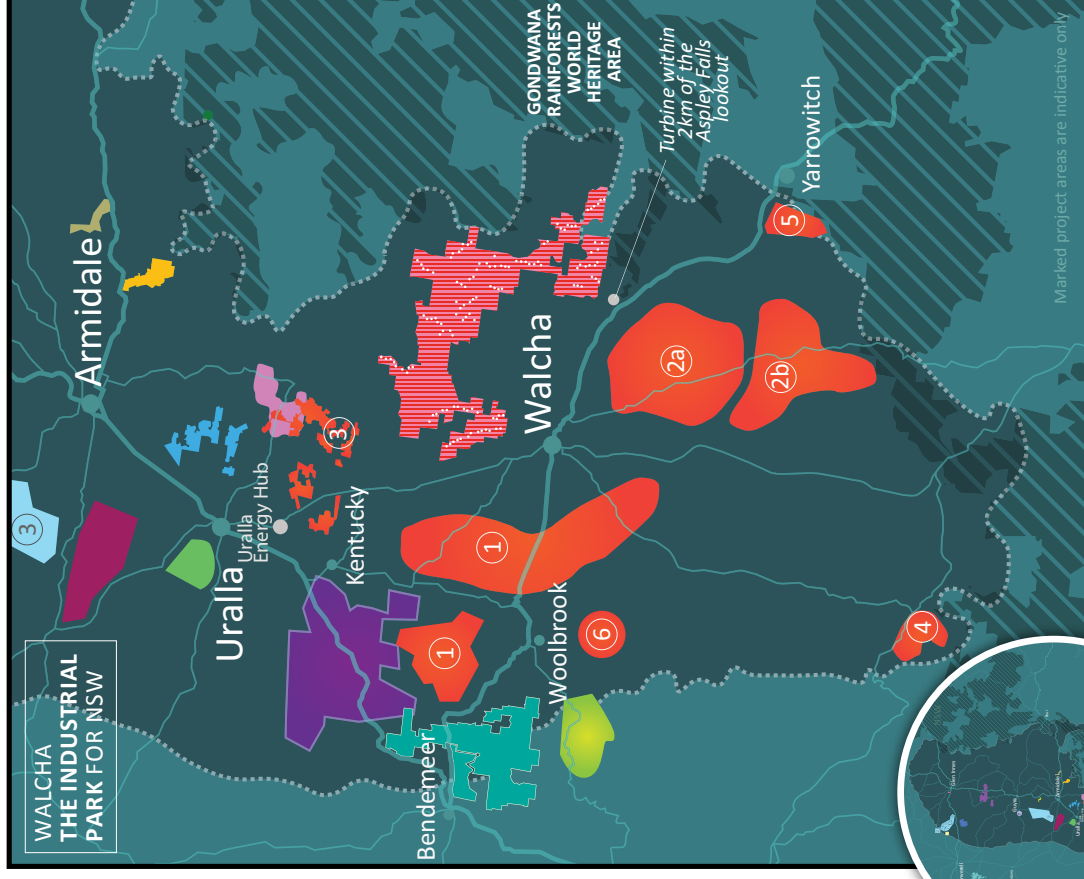
DEVELOPER	PROJECT NAME	TYPE	NO. TURBINES/ SOLAR PANELS	MEGA WATTS	SOURCE
Vestas, Copenhagen Infrastructure + WalchaWind (originally owned by Walcha Energy)	Winterbourne Wind	Wind	119 (project up-date 1/8/21)	800	Planning Portal NSW
Walcha Energy <i>Note: the renewable energy resource of the Walcha Energy Project is in excess of 4000MW. * Source: at Sept 2022 www.walchaenergy.com.au/</i>	1. Ruby Hills Wind	Wind	140	860	• walchaenergy.com.au
	2a. Brackendale Wind North	Wind	80	500	• Aemo.com.au >
	2b. Brackendale Wind South	Wind	30	200	NEM Generation Aug 2022
	3. Salisbury Solar	Solar	2.4 Million	700	• rubyhillswind.com.au
	4. Dungowan Hydro Battery	Hydro		300x8hr+	• dungowanpumpedhydro.com
	5. Tia Windfarm	Wind	50	300	• salisburyenergy.com.au
Neoen	6. Woolbrook Wind Farm	Wind	16	100	
	1. Thunderbolt Energy Hub	Wind	?	380	WindMap
	2. Thunderbolt Energy Hub	Solar	Est 60	120	
Cubico	3. Thunderbolt Energy Hub	Battery	Est 70	400	
	Salisbury Wind	Wind	Est 60+	360	Senior Advisor 0467 068 264
ACEN Australia	New England Solar Farm	Solar	2.6 Million	720	newenglandsolar.com.au
		Battery		50x1hr	
Athena	Woolbrook	Wind & Solar	? Early Stages	??	Unknown
Metis Energy	Bendemeer Renewable Energy Hub	Wind	?	380	bendemeerenergyhub.com.au
		Solar	?	300	
		Battery	?	200x2hrs	
Oxley Solar Farm	Oxley Solar Farm	Solar	3.85 Million	215	oxleysolarfarm.com.au
Infrastructure Capital Group	Rangoon Wind Farm (N/S) ^	Wind	25	130	Planning Portal NSW
		Battery		100x4hrs	
Providence Asset Group	Solar PV Farm (Guyra)	Solar		4.5	Planning Portal NSW
CWP	1. Sapphire Wind Solar Farm ^	Wind Solar	75	270	CWP Renewables
	2. Sapphire Battery Hub ^	Battery		30	
	3. Boorlong Wind Farm	Wind		270	
Goldwind	White Rock Wind Farm ^	Wind	119	175	White Rock Wind Farm
EDF Energy	Yarrowyck Wind	Wind	?	?	
EDF Energy	(Limited details)	Wind	?	?	
FRV	Metz Solar Farm	Solar		115	Metz Solar Farm
Enerpac	Tilbuster Solar Farm ^	Solar		152	Tilbuster Solar Farm
Canadian Solar	Sundown Solar Farm ^	Solar		360	sundownsolarfarm.com.au
Glen Innes Windpower	Glen Innes Solar Farm ^	Solar		4.5	gleninnessolar.com.au

^ Not shown on detailed map (right) to see actual location go to larger map > voiceforwalcha.com

\* includes the on sold Winterbourne Wind project and assumes the use of 6.2MW towers

Source: Planning Portal NSW Link, Eco Generation WindMap showing projects in area, Thunderbolt Energy Hub NEOEN booklet, Newtricity project link

Speak to your community and solicitor, *before* you sign with developers



< For a larger map showing other solar and/or wind projects in the whole NewEngland REZ zone > [voiceforwalcha.com](http://voiceforwalcha.com)



Voice for Walcha is a group of interested and passionate members of the Walcha community who value the local environment, the area and the people to such an extent, that we feel it is worth fighting for. Specifically, we feel that the disproportional and aggressive influx of Wind Turbine projects, is entirely out of whack with the communities wishes and needs to be restrained.

To learn more or to get involved > [voiceforwalcha.com](http://voiceforwalcha.com)

# RubyHills Renewable Energy Project

WalchaEnergy will be formally submitting its Scoping Report for the RubyHillsWind Renewable Project to the NSW State Government DPIE before the end of the year.

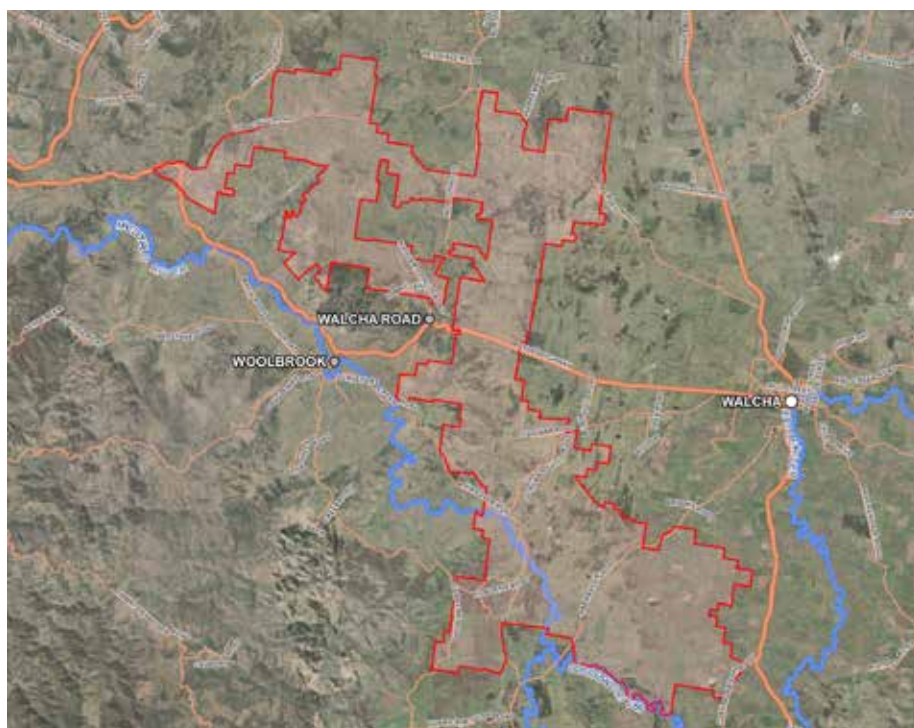
The Scoping Report is a detailed public document which can be reviewed at the NSW Governments Planning Portal ([www.planningportal.nsw.gov.au/major-projects/projects](http://www.planningportal.nsw.gov.au/major-projects/projects)).

WalchaEnergy would like to encourage the Walcha Community to read the Scoping Report and offer comment to either WalchaEnergy or directly to the DPIE.

Again we urge the community to use our office for information and updates. We have recently held two community open days for RubyHillsWind and will continue this trend as we further develop the project. **The information is here in the main street of Walcha for anyone to utilise.**

Once the RubyHillsWind Renewables project scoping report is formally lodged we will be hosting many different forms of engagement activities in and around Walcha.

**The next quarterly news letter will display turbine locations. This is due to finalising locations for scoping study submission.**



ISSUE 3, SEPTEMBER 2022

## ► At a glance

UP TO 140  
WIND TURBINES,  
860 MEGAWATTS



200-300  
CONSTRUCTION  
JOBS

10-15  
FULL TIME  
EMPLOYEES



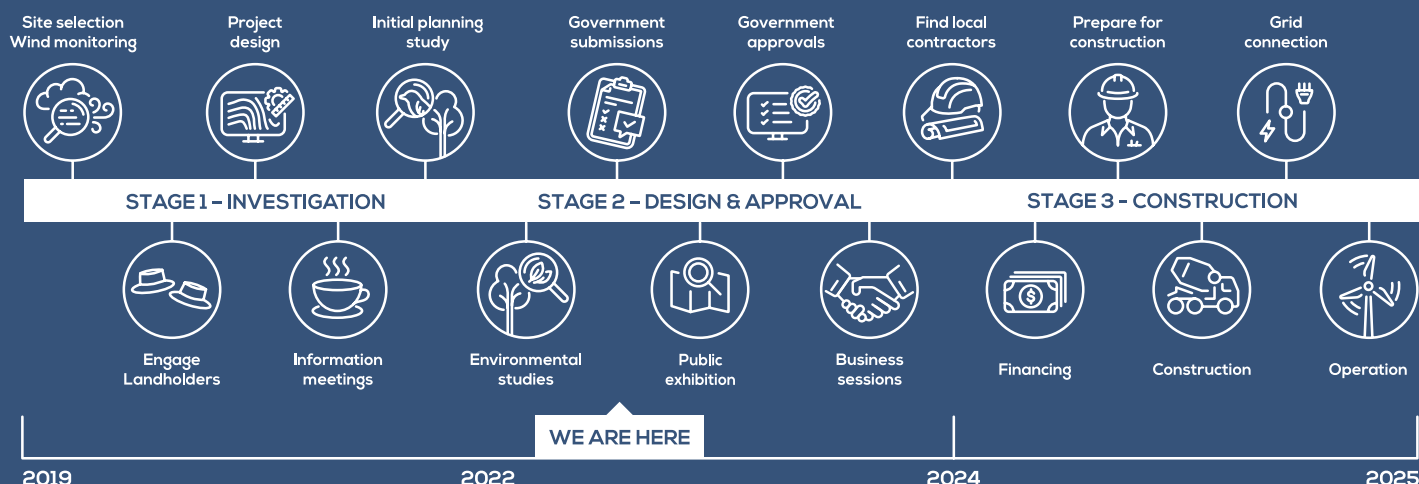
\$800,000/YEAR  
IN COMMUNITY  
BENEFIT SCHEME

RubyHillsWind 

We want to hear from you – so please contact us via email [info@walchaenergy.com.au](mailto:info@walchaenergy.com.au) or call us on 0419 613 471 (admin) or drop into the office at 13W Fitzroy Street, Walcha.



## Indicative project timeline



### Decommissioning

Any landholder entering in to an Option to Lease Agreement with WalchaEnergy will have exclusive and secure financial protection (bond structure) in the unlikely event the project owner defaults on its agreed obligation to decommission its infrastructure.

Prior to the above, our agreements already clearly state that the decommissioning obligation is the absolute responsibility of the project owner to decommission (not the landholder) and is also a government requirement linked to the development consent terms and conditions.

### WalchaEnergy land agreements

WalchaEnergy have always and always will hold group meetings combined with a consistent message to discuss the project with neighbours and the community. This message has been consistent regarding any agreement put forward by WalchaEnergy

- WalchaEnergy have not suggested and don't suggest that option to lease negotiations must be conducted on a one-one basis. Landholders may wish to negotiate one-one or as a group, this decision is up to them. This has consistently been our message to all potential host landholders. We encourage group meetings to ensure transparency for all involved.
- WalchaEnergy have held many Ruby Hills group host landholder meetings and will continue to do so. The entire potential host group are always invited to meet as a group and not as individuals.
- WalchaEnergy have held countless **combined** neighbour/host meetings and will continue to do so.

### WalchaEnergy other project areas of interest located in the Walcha LGA

WalchaEnergy do have additional areas we would like to explore for renewable project potential. We have for many years clearly displayed these areas of interest at different engagement events in Walcha and including our web site. These areas are always subject to change and not limited to the Walcha LGA.

#### Brackendale

Discussions have recently commenced with various landholders in the Brackendale area. These discussions have only been just that, discussions. WalchaEnergy will continue with scoping Brackendale for potential project interest.

Brackendale is one of the highest wind resources available in the New England, however there is no transmission infrastructure in this location. Therefore we would suggest this area as a very long term prospect for renewable project potential, approximately 8-10 years.

#### Woolbrook

Discussions have recently commenced and will continue South of Woolbrook. Woolbrook may become part of the Ruby Hills project in time or become a standalone small size project in the future. This project is also envisaged to be a potential project 5-8 years from now.

Information days will be held regarding these potential areas of interest in the near future. Before this occurs we encourage anyone requiring more information on these areas to visit us in the WalchaEnergy office.



Rubys Hills Renewables is  
a WalchaEnergy Project.

13W Fitzroy Street, Walcha  
info@walchaenergy.com.au  
www.walchaenergy.com.au

Dan Muller  
0402 551 826  
dan.muller@walchaenergy.com.au

Mark Waring  
0407 812 053  
mark.waring@walchaenergy.com.au

Felicity Hurt (Admin)  
Mon/Tues 0419 613 471  
felicity.hurt@walchaenergy.com.au