

THE APSLEY Advocate

CIRCULATION 1810 P 02 6777 1111 F 02 6777 1112 wtc@walchatelecottage.com.au walchatelecottage.com.au

22 June 2022

telecottage
WALCHA

Design, print and secretarial services.

- Photocopying
- Laminating
- Business Cards
- stationery
- Printed Envelopes
- Invoice / Receipt books
- Sale Catalogues
- Flyers and Brochures
- Resumes
- Invitations and Cards
- Certificates
- Menus
- Promotional signage/flags
- Magnets
- Stickers and Labels

OPENING HOURS

Mon/Tues 9.00am – 5.00pm
Wed/Thurs/Fri 9.00am – 4.30pm
www.walchatelecottage.com.au

• • LINDEN HOUSE • • OFFICE SPACE FOR RENT



Adjacent to the
Walcha Telecottage

- Fully renovated
- One room available
- Currently furnished
with one large desk

For enquiries please call
Anthea 0428 498 088

47th President of Angus Australia

Following a long history with the Angus breed and the Australian Angus Society, Erica Halliday has been elected the 47th President of Angus Australia by the Board of Directors at their meeting held in Armidale on Thursday 26 May. Erica comes into the position following out-going president and board chair Sam White, Bald Blair Angus, Guyra NSW.

Erica, along with her husband Stu, run Ben Nevis Angus in Walcha, which was established in 1947 by her father Bruce Steel.

She has a long history intertwined with Angus Australia, dating back to 1986, where she competed in the inaugural Angus Youth Roundup. Following this Erica was heavily involved with the society at a Youth level and in 1994 was selected for the Angus Youth University of Illinois Scholarship following her win of the National Judging Competition.

From 1995 to 2000 Erica served on the staff of Angus Australia as Youth Coordinator, where she worked in the development of the youth members of the organisation and has served on the board of Angus Australia since 2018.

Erica is a strong advocate for the Australian Beef Industry and has previously served on a number of board committees, including the New England Girls' School (NEGS) and the Australian Beef Industry Foundation and is currently an Elected Member of the BREEDPLAN Advisory Committee – Meat and Livestock Australia, an appointed member to Namoi Unlimited Industry Steering Committee and a director of Rural Aid Australia.



Pictured: Newly appointed Angus Australia President Erica Halliday with CEO Scott Wright and Vice-President James Laurie.

In taking over the helm Erica paid tribute to Mr White and his leadership of Angus Australia. "Sam is a man of great substance, a man of honour, integrity and pure kindness, but at the same time someone who is not afraid to pull the hard punches when required."

"If there were ever the hard questions to be asked or the courage needed to get something done to get to the heart of an issue, Sam was always up to the task."

'It has been absolute honour to work with Sam and while we will miss his presence on the Board, I look forward to working with the current Board and our CEO Scott Wright to continue to drive the success of Angus Australia and the Angus breed.'

Erica will be supported by newly appointed incoming Vice-President James Laurie of Knowla Livestock, Moppy NSW.

BE PREPARED FOR GRASS TETANY

See staff at Walcha Veterinary Supplies
for your Magnesium Supplements
BLOCKS OR LOOSE LICKS

AVAILABLE AT



6777 2588

www.wvs.com.au
6 Aberaldie Road, Walcha



OK EARTHMOVING

Specialising in road construction & maintenance

• Stickraking • Dam building • Erosion works



Bulldozers • Excavator • Tip-truck • Vibrating Roller

PH 6777 7430 FAX 6777 7448

PETER O'KEEFE: 0429 944 821

around the traps



By BRUCE RUTHERFORD

Milder conditions over the last week have provided some respite to the unmerciful cold conditions we have experienced since the dying days of autumn. This last week has been much more bearable with a few days of sunshine after some cold nights, with little or no wind. We do hit a milestone this week with the shortest day of the year, so at least we are going to be heading into longer days from this point, albeit slowly. As cold as it has been for us down under in recent weeks, it has been the opposite in parts of the northern hemisphere with high temperature records being tested. Once again Spain is recording extremely hot conditions and wild fires are causing serious damage to the landscape. Something we are all too familiar with and thankfully has not been a problem for us this last couple of years.

Livestock markets have taken a bit of a beating this last week or so with both sheep and cattle markets struggling to maintain their ground. Market reports for both species indicate buyer strength is missing from the rails with not all buyers operating freely. The EYCI has taken a distinct turn south this last week, closing at 1087 c/kg CW, after weeks of hovering around 1100 c/kg CW and having reached a high above 1200 c/kg CW in January. The ESTLI (Eastern States Trade Lamb Indicator) is sitting around 770 c/kg CW which is down from around 830 c/kg CW this time last year. Slaughter numbers are interesting, with cattle numbers still below the levels of 2020 and 2021 at this time and sheep numbers running above the previous two years. So the increased numbers in the sheep flock nationally are playing out as predicted and there are clearly more animals to process.

After the long weekend last week markets were back in full swing this week in Tamworth, Forbes and Wagga. Numbers increased in all three markets and values were for the most part cheaper. Wagga yarded 3200 mostly plain quality cattle while Tamworth yarded 1500 and Forbes 880. The markets on Monday all quoted cows cheaper by as much as 25 c/kg with some of the light cattle back by more. Feedlots still appear to be in the game for the best heavy weight feeder cattle although values have slipped for the lighter weights as restockers take a back seat in wintry conditions. This should come as no surprise as this correction has been forecast for some time, but there are forecasts out there pointing to beef shortages globally with climatic conditions creating significant problems for producers in the USA. So how this will play out, is anybody's guess, but if we do get another wet spring and the US continues to kill high numbers of breeders, prices could remain above expectations well into next year.

The cattle market on Auctions Plus this last week saw 19,600 head on offer and clearance rates immediately following the auction struggled to get much above 70% in many categories. I have no doubt there would be plenty of deals done post auction, as is always the case. However, buyers are more selective and paying the money for the better quality cattle. Prices are still remarkably strong for the females in particular, as buyers look to the longer term and confidence grows about the seasonal outlook. Since I declared the lamb market may have turned the corner a couple of weeks ago, I think it has dropped every week! I must say I thought it was about to take a turn for the better as we headed into the colder months where supply is more restricted, but that has not been the case and maybe feedlots are playing a part in that. Slaughter numbers for sheep and lambs are up year on year, and when you look at those numbers it is evident that prices are unlikely to move higher. We will have to keep an eye on the numbers being processed as we get to the other end of winter, but it is surprising to me there are still numbers about.

It is now the NSW Government's chance to spend money like there is no tomorrow in an endeavour to convince the public to give them another chance in the state election next year. I am not sure how many announcements this lot have made over the last few weeks prior to the state budget, but it is a lot, and they appear to be mostly to buy popularity. Not long ago they shelved a number of significant projects because of funding constraints, but apparently they can find \$100m for Rugby League facilities in Sydney. Spare us Dominic, but if you can't find something better to do with \$100m after the floods in the north, you don't deserve another term.



**BROOKLYN
QUARRY**

Taking orders today!

*Brooklyn Quarry is your local
Walcha Hard Rock Quarry.*

*Our Quarry Products are perfect
for rural roads that have been
washed out with the recent rains!*

*We have a variety of products that
will suit your every need:
big rocks, small rocks,
rocks of any size!*

Prompt local delivery to you

*Contact us today to have a
conversation with one of our team.*

Have a rock solid day!

**Experienced
Positions
Available:**

**> HC Truck +
Dog driver**

**> Excavator
Operator**

SCOTT@BROOKLYNQUARRY.COM.AU

0434 011 570

1643 OXLEY HWY, WALCHA RD. NSW
(BY APPOINTMENT ONLY)

WWW.BROOKLYNQUARRY.COM.AU

From red and white to GPS representative rugby

Three former Walcha Ram Lambs went head to head yesterday when GPS White took on the NSW Country Under 18 team as a part of the GPS representative carnival held at Shore.

Dougal Payne and Charlie McLaren learned of their selection in the GPS White squad on Sunday following the first round of GPS matches for their respective schools on Saturday. Dougal is full-back for the Shore First XV and Charlie is half-back for Scots' College First XV. They were selected from the best young rugby players in the GPS competition which comprises eight schools.

With the GPS representative squads only being named on Sunday, Dougal and Charlie have only had one training session together on Monday before Tuesday's clash.

Year 12 TAS student, Eugene Campbell lined up against Charlie and Dougal following his recent selection in the NSW Country squad. Eugene plays in the front row for Country with this being their second game following a tough 19-all draw against Combined High Schools at the end of May.

The GPS White team came away with a win 69-19 against the Country boys.



The three Year 12 students began their rugby careers playing together in the red and white for Walcha Junior Rugby in the Central North competition. For this small Club to have three representative players is a monumental achievement and highlights the strong base it provides for junior rugby players.



Nutrien
Boulton's

Stock and Property Watch

www.nutrienharcourts.com.au

Family Brick & Tile Home



- Three good sized bedrooms, two with built ins
- Bathroom consists of shower/bath/vanity with separate toilet.
- Large lounge/dining with wood heater
- Kitchen with new electric stove
- Fully fenced yard with separate garage

\$350,000



Are you thinking of selling?

- *There has never been more interest in residential real estate in Walcha as now*
- *Our team are fielding calls daily from qualified buyers looking to move to our small piece of paradise*
- *For an appraisal on your asset call us today.*

To list your property please call:

Peta Carter

Residential – 0407 350 781

Bruce Rutherford

Grazing and Small Properties –
0428 660 328

Nutrien Boultons: 3n Derby Street Walcha – Phone 6777 2044

**Passionate people.
Global thinking.
Regional heart.**
Building a better energy future.

FORGE YOUR OWN CAREER
**APPRENTICESHIPS
AND TRAINEESHIPS**
WITH ESSENTIAL ENERGY

Essential Energy is recruiting for
Powerline Worker, Zone Substation
Electrical Technician and Cable
Jointer apprenticeships; and Field
Operations Traineeships across NSW.

If this is the opportunity you've been waiting for
apply now essentialenergy.com.au/apprentices.
Applications close midnight 24 July 2022.





RUGBY REPORT

BARRABA V WALCHA

By Eric the Spider

The final match of the round saw Walcha Reserve Grade head to Barraba with first grade having a bye due to Barraba not fielding a first grade in this years competition.

With Walcha reserve grade still struggling for consistent numbers the boys managed to get 12 players to travel for the contest with Barraba. The game began with some very quick rugby and Barraba looking to throw the ball around and exploit their 3 man advantage. Walcha defended well with big collisions from Ross "mo Monie mo problems" Monie who floored a number of the bigger Barraba forwards. Ben "junkyard dog" Burwell was a menace around the paddock throwing himself into every tackle and attempting to disrupt the Barraba ball at ruck time. Tom "sausage specialist" Hoy made plenty of big runs with the ball leaving Barraba defenders in his wake.

As the 12 man Rams began to tire Barraba started to take their opportunities, scoring a handful of tries to take the lead. Matty "lil tis" Tisdell directed the team around well with some tactical kicking which gave Walcha some much needed territory. Walcha were able to hold onto the ball for a number of phases which finally resulted in Tom "AFL dude" Gough scoring in the corner. An excellent team try.

Troy "T-Rex" Tape had a great game making a number of tackles in defence and popping up in attack across the park. Lane "new guy" Clarke played well from halfback clearing the ball efficiently and providing quality service to the rest of the team. Archie "sheepman" Lawrence was tireless in defence and did not stop all game. Ben "other chicken guy" Partridge had some great runs breaking the line on a number of occasions. It was great to see Sione "ony" Kamoto back playing for the Rams with some enforcing runs and completing a number of turnovers against the run of play. It was a brave performance from the Walcha lads playing a few men down and never giving up.

To their credit when Barraba leant the Rams 3 players to even the teams up for the final 25 minutes the score remained 0-0. Barraba ended up winning the reserve grade fixture 46-7.

The second round of the Central North competition kicks off next week with Walcha travelling to Scone.

PKF
Wealth

Achieve the best outcome for your investment and retirement goals. Contact our highly qualified and professional financial adviser today.

Greig Meyer is a Certified Financial Planner and principal of PKF Wealth based in Tamworth and Walcha. For more information or to make an appointment contact one of our friendly staff now.

Tamworth	Walcha
22-24 Bourke Street	12 Derby Street
Tamworth NSW 2340	Walcha NSW 2354

Greig Meyer is an Authorised Representative of PKF Wealth TMW Pty Ltd

ABN 21 154 894 130 AFSL No. 515733

AUCTION
"SUNNY RIDGE"
33 Ohio North Road, Walcha

57.9 ha / 143 ac

A wonderful, rare opportunity to purchase quality acreage only minutes from the centre of town

There is so much to like about this property
IT IS A MUST TO INSPECT

- Walking distance to town on the northern side
- Beautiful, undulating country with plenty of trees and open grazing
- 2 dams providing stock water. Plenty of rainwater storage for domestic use
- Comfortable 3 B/R home – recently painted inside and new floor coverings

**Prime Position
RARE SIZE &
LIFESTYLE
OPPORTUNITY**

AUCTION
21ST JULY, 11AM
at Walcha Vet Supplies

SELLING AGENTS


6777 2044
Bruce Rutherford 0428 660 328


6777 2000
Andrew Blomfield 0428 667 402

letters to the editor

What will change with full blown Wind Farm development?

A recent letter to the editor explored the benefits of Wind Farm development to the community of Walcha, while describing Walcha as a declining town, in need of industry input to survive. I wanted to challenge this question, prior to the project being swung into full force following EIS approval.

Who in the community will benefit from this project? It is the landholders receiving wind turbine income, and the town receiving community benefit of \$500,000 annually, equivalent to 0.21% of Walcha's GDP. The revenue towards landholders and the community is welcome. The major beneficiary of course, is Copenhagen Infrastructure, or whoever owns the project at the time (along with project owners along the chain of ownership). More importantly, I believe, is the cost that this project will place onto the community of Walcha.

Rate payers will be asked to cover the cost of road repairs from 288 daily heavily loaded truck movements through the town and on local roads, in addition to 270 light vehicles during peak construction period. If limited to daylight hours, that equates to a truck through town every two and a half minutes. Couple this with the 270 light vehicle movements per day, and we don't just have major damage to roads and infrastructure, but major congestion also, as these light vehicles will be traveling to and from work during peak times. Damage to roads will be borne by the community, as ratepayers and as drivers on dilapidated roads. No arrangement has been allowed for, to cover the cost of this repair work, other than self-managed assurances from the developer that they will make good the repair of roads. There is no authority that will ensure that this work will be carried out at all. This is an international developer that we are relying on to carry out road repair work.

By law, mining companies have to hold funds in place to de-commission and re-habilitate end of life mines. This is not the case for wind farms, and landholders will be relying on the good will of an international conglomerate to cover this cost, (estimated to be in the order \$0.5M per wind tower) while not gaining any further financial benefit from the project. If they indeed do come to the party to cover de-commissioning costs, these turbine blades will need to be buried as landfill, somewhere in the Walcha district. Walcha Landfill is already struggling with the cost of assigning new and updated waste processing space. The scale of material to be buried is not to be underestimated.



Picture: Fragments of wind turbine blades await burial at the Casper Regional Landfill in Wyoming, dwarfing a bulldozer in top right of picture.

Developers bemoan the cry, "If it ain't broke, don't fix it". They call for a community need to rapidly and aggressively shake things up – of course, that is their business model. I would certainly argue that Walcha needs sustainable and long-term industry to build resilience and prosperity and support the local community, but a short-term project that employs specialist work staff, supports 20-30 landholders and an international developer is quite a different thing. I am not in any way denying the

landholders their due, simply saying that a beneficiary of a project will support its progress, and that their view must be understood with that background.

The workforce will comprise an out-sourced transient workforce carrying out the specialist construction work, using mostly imported components and materials. These are not bodies that will fill the Rugby or Rugby League side, they will have little or no attachment to community and be gone in a cloud of dust when their job is done. The raw materials required for construction will be sourced from a limited resource bank in the area and will provide a short-term boon for suppliers of materials, at the expense of the Walcha community who will be in the queue for once readily available, but soon to be rare materials such as gravel, water and the like. We have to be careful how we want this to play out.

While being supportive of the renewable energy drive, we are questioning the share of the NSW states Renewable Energy load that Walcha is being asked to carry. The proposed Wind energy projects for Walcha alone, amount to 3.2 GW of renewable energy production. This is 40% of the total New England REZ (Renewable Energy Zone). The next largest REZ in the state of NSW, is in the Central West, Orana, expected to deliver just 3 GW of renewable energy. Ref: <https://www.energyco.nsw.gov.au/>

The question we are asking is; Does this Walcha project need to be as large as it is proposed to be? Can the community and the landscape handle this load? Are we being fairly compensated for this industrial assault, and has the planning been adequate to manage these arising issues? I would argue that our community is simply not aware of the scale of this proposed project and it has not been adequately prepared for this very significant industrial load that will occur.

We do not want the community of Walcha to be ridden by a large international developer, without fair compensation for damage to infrastructure and landscape, as well as disruption to activity in the community. In addition, I feel that we have to be careful not to be asked to carry a disproportionately large load of the state's energy production, and becoming an industrial town, with a temporary and transient workforce that adds nothing to the community and disappears at end of construction.

I am in full agreeance with the sentiments that Warwick Fletcher expressed in last weeks letter regarding our town of Walcha, that Walcha is a beautiful town with a strong community that has withstood many challenges and boasts a myriad of sporting clubs and community groups that give a vibrancy to the community. Far from being broken, the town operates a thriving agricultural industry, with strong forestry and transport businesses, it is enjoying an influx of new people into the town, purchasing blocks where land was difficult to sell only 10 years ago. Despite many rural towns declining, Walcha has embraced opportunities associated with tourism, as a support to the main industries of agriculture, forestry, and transport. It currently boasts more café's, restaurants and pub dining rooms than I can remember – not to mention an art gallery of our own. The town is far from broken, and we need to be careful that it is not destroyed by external developers fighting for their desires, not ours.

Cameron Greig



FINANCIAL SERVICES

- Rural and Commercial Finance
- Leasing
- Home Loans
- Insurance Premium Funding

KEL PENFOLD
6766 5309 • 0427 667 118



Limited tickets
on sale
1st July 9am

HERITAGE HOMESTEAD SERIES 2022

NEW ENGLAND CONSERVATORIUM OF MUSIC

EMU CREEK HOMESTEAD
MIRANI HOMESTEAD
OHIO HOMESTEAD

SAT 15 OCT, 3pm
SUN 30 OCT, 3pm
SUN 6 NOV, 3pm

WALCHA, NSW

NECOM's Heritage Homestead Series offers a magical combination of chamber music performed live at three of New England's private homesteads.

The concert series showcases NECTOM's talented musicians and guest artists and offers a vibrant selection of 20th century masterpieces, music of the classic and romantic periods and the high baroque.

As these Homesteads are not open to the public, the series offers an exclusive glimpse into the architectural history of the area through three of the New England's most prestigious homesteads and gardens.

Tickets: \$75

Including refreshments

Book now: www.trybooking.com/eventlist/necom2022events



Presented in association with:



Welcome to our latest project update



**Winterbourne
Wind**

In this edition, read about:

- What we heard at the Walcha Show in March
- Biodiversity survey results
- How we are working to mitigate impacts from traffic and transport related activities
- Our progress to lodge an Environmental Impact Statement (EIS)

Walcha Show 2022

On 10-11 March, we had the pleasure of hosting a Winterbourne Wind Farm info booth at the Walcha Show for the third year in a row. Thank you to all who made the time to stop by, show support, or ask questions. We presented information on a range of topics and chatted with over 75 community members.

Feedback forms were available and completed by a number of visitors, providing the following insights:

- **88%** of visitors who completed the feedback form identified as local residents or local business owners
- **90%** of visitors who completed the feedback form were highly satisfied with the information presented.

Many visitors appreciated the visual photomontages that demonstrated a realistic view of the proposed project from various public viewpoints.

Several participants indicated that they 'felt reassured and better informed' after the conversations with members of the project team. Valuable feedback was obtained from the community



Visitors at the info booth at the Walcha Show 2022.

across a variety of topics and perspectives. Jobs, tourism, and economic stimulus were often noted as significant project benefits. Community members also positively mentioned the upgrade of local roads, clean energy for future generations, and funding for local projects and initiatives.

All feedback, both positive and negative, is being carefully considered in the preparation of the EIS.

Completion of biodiversity surveys

An extensive biodiversity field survey was completed in January 2022. The field survey included vegetation mapping, flora and fauna surveys, bird utilisation surveys, and bat surveys. In total, biodiversity surveys have included:



12 field investigations between August 2020 and January 2022.



2,633 total field survey hours.



140 Biodiversity Assessment Method plots.



Targeted surveys for **27** fauna species and **23** flora species.



4 Bird Utilisation Surveys.



518 microbat detector nights across **8** locations.

Summary of findings include:



10 Plant Community Types were identified within the proposed project footprint.



6 targeted fauna species were directly or indirectly identified: Squirrel Glider (*Petaurus norfolcensis*), Koala (*Phascolarctos cinereus*), Greater Glider (*Petauroides Volans*), Glossy Black-Cockatoo (*Calyptorhynchus lathamii*), Barking Owl (*Ninox connivens*), and Spotted-tailed Quoll (*Dasyurus maculatus*).



2 targeted flora species were identified: Narrow-leaved Black Peppermint (*Eucalyptus nicholii*) and Bluegrass (*Dicanthium setosum*).

Further information about biodiversity impacts will be made available in the Biodiversity Development Assessment Report, which will be included in the EIS.

Mitigating the impact of traffic

The purpose of the assessment is to evaluate the capacity of the existing road network to handle the average and peak traffic movements generated during project construction.

The project is expected to generate up to 288 heavy and 270 light vehicle movements per day during peak construction. A movement is a one-way trip. A single vehicle will make two movements (out and back) for any particular trip.

The current traffic on Thunderbolts Way is approximately 1,120 vehicles per day. Traffic generated by the project will likely increase that figure by approximately 280 vehicles per day during peak construction. A third-party traffic expert has concluded that Thunderbolts Way and the rest of the local road network can accommodate project traffic with a good level of service and ample spare capacity.

The majority of vehicle movements for the project will be made by workers travelling to/from the construction site in light vehicles. These movements will typically occur at the beginning and the end of the day.

Five to ten larger, oversized vehicles per day will be required for for approximately 12 months during the peak of project construction to deliver wind turbine components and equipment. These loads will originate from the Port of Newcastle and will travel via Tamworth along the Oxley Highway. While delivery of these components may require drivers to pull to the side road for a minute or two to let the



oversize vehicle pass, this will not significantly impact the travel time to Tamworth. Each oversized vehicle will require state transport permits and will be accompanied by a lead and lag safety escort vehicle. The oversized transports will be timed to arrive outside of school bus hours.

A Traffic Management Plan will be prepared prior to construction that describes in detail how traffic will be managed to reduce impacts to residents, school buses, commuters, cyclists and other community members.

We will upgrade local roads where necessary prior to construction to the satisfaction of Council and Transport for NSW. The road network utilised by the project will be monitored and maintained to ensure continued safe use by all road users, and any damage attributed to project construction will be rectified.

Environmental Impact Statement

The next project milestone is the submission of the EIS to the NSW Department of Planning and Environment. We are working hard to finalise the EIS and lodge the project development application in July or August. Once lodged, the EIS will be placed on exhibition with a public comment period of at least 28 days. We will advertise the exhibition period and the documentation will be available online and in hard copy. We will also host another community open day to provide information about the project and the EIS.

Do you have feedback or questions about the project?

We want to hear from you! We are always keen to hear from anyone with an interest in the project. Please reach out to discuss opportunities to get involved, ask questions or provide feedback for our consideration.

Website: www.winterbournewindfarm.com.au

Project Update: Approximately bi-monthly

CCC Meeting: Approximately quarterly, next meeting on 29 August 2022

Email: info@winterbournewindfarm.com.au

Phone: 1800 252 040



Fundraiser auction a great success

By A.J. Cross

What a wonderful success the Fundraiser Auction was last Saturday evening at the Walcha Bowling Club where over \$30,000 was raised to assist Troy Le Strande on his road to recovery from ill health.

A Monster Raffle was also conducted in conjunction and at the time of going to print proceeds from the raffle hadn't been announced.

Nutrien Boultons auctioneer Mat Larkings and his offsider Baden Chaffey from Ray White Real Estate in Tamworth both did a fantastic job with the 70 items that went under the hammer and deserve a big pat on the back for their efforts.

The best selling item on the night was a week's holiday at a unit on Newcastle Harbour kindly donated by the Betts family which was

finally secured by Narelle and Jim Gehrke after spirited bidding.

A couple of nights accommodation at Mudgee for eight people was next best, purchased by the Kawana Syndicate while a group of Troy's Central Coast mates who couldn't attend chipped in to buy the Terrigal Rugby League (Troy's former club) guernsey on offer.

After the auction Country teenage singing superstar Lane Pittman entertained the crowd and made his own donation towards the fundraiser.

Troy's son Jake thanked chief organiser Rebecca Taiki and everyone who attended the fundraiser, while 'Bec' thanked her mother Suzie Harrison, Diane Green and Peter Berry for their efforts. Good on ya Walcha for a job well done.



Troy with his sister Tandi, visiting at the rehab unit in Tamworth before the fundraiser



Above: Mat Larkings and Baden Chaffey run the auction with the assistance of Rebecca Taiki. Right: Supporters at the fundraiser



Pitt Son's REAL ESTATE & LIVESTOCK

SAM PAYNE 0428 667 404 | ANDREW BLOMFIELD 0428 667 402
RON VINCENT 0427 775 821 | TROY DAVEY 0427 157 557

FOR LATEST
UPDATES



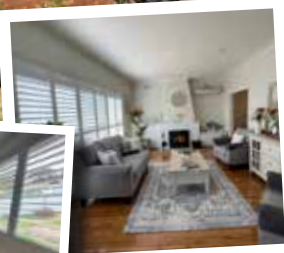
6777 2000 | www.pittsons.com.au

Something Special



**CATCHING THE
WINTER SUN ALL DAY**

- 3 Bedrooms
- Spacious lounge room with wood fire
- Family room northern side
- Kitchen with dishwasher
- Bathroom with shower & bath tub
- Dining area
- Lovely closed in room off dining area
- Lock up garage & workshop with power
- Spacious backyard



THIS HOME NEEDS
NOTHING TO BE DONE
\$470,000

FOR SALE

This Friday on Auctions Plus
COUNTRY AUCTIONS SALE

**Williams ATE 20 run
double disc seeder**
In very good condition

**Kerin Engineering
Yeoval Grouper**
40 bag capacity
Very good condition
Split bin 50/50

4x4 Safari Buggy
Hilux Petrol motor
5 speed Manual transmission
Great farm or shooting rig





Walcha Council WINTER



SCHOOL HOLIDAY PROGRAM

CNRL Robot Soccer

Mon 4th July 12-1pm @ Walcha Library Ages 8+

'Move it' gym session

Try an exercise class that mixes dance, boxing and aerobics.
Wednesday 6th July 9 - 11am @ Walcha Community Gym
Ages 10 - 17 yrs

"Kids in business" workshop

Fun activities to inspire Walcha's youth entrepreneurs
Thurs 7th July 2-5pm Ages 8 - 17
@Walcha Council Community Care 115 Middle Street

NAIDOC Storytime

Stories, craft & games to celebrate NAIDOC Week for all ages
Friday 8th July 10am - 12 noon @ Walcha Preschool

Little Lego Masters

Building challenges & games for ages 4-7 yrs
Monday 11th July 10-11am @ Walcha Library

Board game tournament

Meet your friends for some games - prizes on offer!
Wednesday 13th July 2-5pm Ages 8+
@ Walcha Council Community Care, 115 Middle Street

Learn to sew session

Sew library bags for the 'Baby's first library bag
program' Thursday 14th July 2-4pm
@ Walcha Handmade Ages 12yrs+



All activities are sponsored by Walcha Council
and FREE to attend

Bookings essential as places limited
via Walcha Library

library@walcha.nsw.gov.au or 67742550



45ft flat top • 45ft single deck cattle float • 26mtr B Double
19mtr mini B Double • Low Loader available for hire



BRIAN
Smith
TIMBER
TRANSPORT

Call us for
your large
Transport
needs

WALCHA
02 67772126

Bonnie Smith 0429 772 077
Brian Smith 0427 780 216

What's the Goss

With A.J. CROSS



The Walcha Bowling Club was jam packed when a Fundraiser Auction and Monster Raffle was conducted last Saturday evening where no less than 70 items were auctioned off to raise over \$30,000 to help council employee and former Walcha Rams player Troy LeStrande on his road to recovery. The LeStrande family couldn't thank the Walcha community enough for their support especially chief organiser Rebecca Taiki who put so much time and effort into making the night such a successful one.

...

Auctioneers Mat Larkings and Baden Chaffey did a great job entertaining the large crowd while selling all the items on offer, kindly donated by local individuals, local and surrounding business houses. Organiser 'Bec' thanked everyone who donated towards the auction and raffle as well as all the people who attended the auction along with those who purchased raffle tickets.

...

Teenage country singer Lane Pittman performed during the night and although there was no cost to attend a bucket was left at the door where a note could be dropped in as a donation. A total of \$1,100 was raised from the bucket and even Lane chipped in with a donation of his own.

...

There was another fundraiser going on at the Caravan Park last Saturday night where the Oxley Riders Club teamed up with the Park to raise funds for the young Howard family following the horrific car crash which claimed the lives of Hannah Howard and Molly Peachey recently. 'Adrenaline Crush' supplied the entertainment after the band had been booked months in advance for a different reason but park owners Luke and Tammy allowed the Oxley Riders to use the existing booking as part of the fundraiser. Tammy reports they had the best attended night in the five years they have been at the Park raising plenty of dollars to help the family with costs following the tragedy.

...

Sad to hear former Walcha Courthouse Clerk 1970's, Walcha Roos Secretary and St George Dragons supporter Bob Potter left this world recently. A service for Bob will be held at the Holy Trinity Church in South West Rocks from 10am this Saturday. Condolences to Bob's wife Sybil along with all his other family members and friends.

...

Former Walcha Rugby Union player Don Lisle who represented NSW in 1950 along with New England and Combined Country as a speedy winger also left this world recently. Condolences to all members of the Lisle family and friends.

...

Best of luck to the Scrivener brothers Mitchell and Austin when they head to Hawkesbury Showground this Saturday to compete in the Stihl Timbersports Rookie Series qualifier. Other qualifiers are being held in Tasmania, Victoria and Queensland where all competitors compete in various categories where each event is points based on their times. The top six Axeman with the highest points from across all states qualify for the Australian Rookie Series Final this year. Go gettum 'boys'.

...

On arriving at the Wauchope RSL Club following the farewell service for 1980 Dally M Medal winner Robert 'Rocky' Laurie last Friday I was greeted by Mal Butler who asked me if I was representing the Australian Rugby League at the funeral after he spotted the green and gold jacket I was wearing. I soon informed Mal I wasn't and that I was from just up the road at Walcha.

...

Mal's next question was if I knew a bloke by the name of Jimmy Duck while letting me know Jim moved up that way years ago. My reply was that I vaguely knew Jim and that he had been my next door neighbour for over 30 years since his arrival in town. On investigation A J Duck has been living at his current residence since October 1988.

...

Walcha Rugby League trailer load of wood will be drawn on Sunday 26th after the games against Tingha.



Bowls

Results: A Grade Singles Semi final K Goodwin defeated B Kliendienst 31-18. Pairs Semi Final S Goodwin & G Bird defeated T Parker & F Cameron 19-18.

Draw for this Saturday: Triples 12:00 start G Bird, G Carter & R Kerr v G Natty, K Creighton & S Bath. T Asmus, J Asmus & I Bird v E O'Keefe, N Goodwin & B Goodwin. N Dunn, A McGuffog & G Marshall v G Clare, M Hamel & F Cameron.

Dads Army: A game of triples and one of pairs was played on Thursday afternoon. In the triples, Brian Goodwin, Peter Hayes and Eric O'Keefe defeated Barry Kliendienst, John Watts and Warwick Hogan. The pairs saw the father and son combination of Tony and Jason Asmus defeat John McCormack and Geoff Salt. Tony and Jason won the chooks and 'Snow' Bird and Barry Kliendienst won the raffles.

Ladies Golf

It was a very sombre start to our golf on Wednesday as we stood together for a minutes silence to pay our respects, and remember our great golfing friend and long time member Jeanette Wark.

We played a stroke event along with putting and monthly mugs and country vets for Terry Hayes trophy. Pauline Carter came in with a ripping score of 68 points. Sweepstakes then were won by Margaret Davidson 71, Cark Street 74, and Simone Sweeney with 75.

Cheryl McDonald was the flat stick champion with 24 putts and she also won the second shot on 18. Margaret Davidson had a brilliant shot on 3 taking out NTP.

Our monthly mug winners were Simone Sweeney - Division 1, Margaret Davidson - Division 2, and Pauline Carter - Division 3.

Today we play the 27 Hole Foursomes Championships for a trophy donated by Elders.

At the 19th

Last Sunday a stroke medal round was played for a trophy donated by D A Locke where Michael Stackman continued his recent consistent form to win the event after carding a 70 nett. He was always going to collect the A Grade mug as the man they call 'Des' was the only player to tee off in that division.

The other grades went to former Walcha Mayors Alex Gill (B) 71 and Bill Heazlett (C) 72 on countback from Drew Bird who collected a sweepstakes ball along with club 'Head Honcho' Allan Green on 73 nett.

Best Scratch Score was 80 off the beater registered by Michael Stackman who also claimed the 18th hole Nearest the Pin.

Sharpest shooter at the 16th pin was 'Molleydooker' Julie Hoad, while no other players were clever enough to reach the beach on either 3 or 9.

Long drives sponsored by Tony 'Blackhanded Larry' Asmus went to club handicapper Don Brooks (B) and Mel Clark (C) whereas the only A Grade player on the day couldn't find the fairway with his tee shot.

The Putting competition was taken out by Bill Heazlett with just 19 putts while the coveted 'Pink Shirt' for most putts was eagerly accepted by John McCormack with 33 jabs.

Last Saturday Col Higgins won the weekly 9 hole competition after he accumulated 17 stableford points the same total Sue Partridge carded to win the Ladies division. Respective Runners up were Deon Lawrence and Pauline Carter both on 13 points.

This Sunday is a stableford round where Jack O'Hara is in charge of supplying the prize while the Manilla Open is also scheduled for the same day.

Ladies Bowls

On a nice sunny day last Thursday, only four bowlers played a game of three bowl pairs, with June and Jan Cross having a win over Debbie and Marg Tickle 17-14. Our Annual General Meeting will be held on the 18 August with nomination forms on the board.

At our monthly meeting last week it was decided to leave the Ivy Makeham Singles until October. Coming up is the Westpac Rescue Helicopter Charity Bowls Day on Sunday 21 August with sheet on board for names.

Rugby League

Walcha hosted their first Group 19 fixture last Saturday at Peter Fenwicke Oval where the Moree Boomerangs defeated Uralla/Walcha 46-28 after leading 26-16 at half time.

The visitors opened the scoring with a converted try after 9 minutes before the homeside levelled up with a runaway try to centre Zac Walters and a conversion to winger Harley Carlon.

Uralla/Walcha hit the lead three minutes later when fullback Shuaib Rhodes Swain touched down and Carlon converted but was short lived as the Boomerangs bounced back to equal at 12 all with their own converted try. When Hooker Brody Dexter burrowed his way over for a try Uralla/Walcha once again were in front but were unlucky when Carlon hit the upright with his conversion.

A knock-on from the kickoff proved expensive for the homeside as Moree scored a try in the next set of six tackles and then added another two tries one of which was converted before oranges were taken.

When Dexter touched down for his second try early in the second stanza and Carlon converted, Moree lead 26-22 which was increased when the Boomerangs scored an unconverted try, moving to 30-22.

Midway through the second session Uralla/Walcha reduced the lead to 30-28 through a try to Cooper Boyd and a Carlon conversion, but unfortunately that was the end of the homeside scoring.

Moree crossed a further three times, two of which were converted during the final 15 minutes to finalise the scoring at 46-28 just before the final hooter.

Uralla/Walcha certainly had their chances during the match but a few basic mistakes proved costly as the Boomerangs made them pay on each occasion.

This Sunday Walcha are again hosts when Uralla/Walcha take on Tingha here at Peter Fenwicke Oval with all the Ladies League Tag action kicking off at 1.00pm.



Plenty of action on the field last Saturday at Walcha



Photos: James Levingston

church notices



ANGLICAN Walcha

Sunday 26 June 7.30am Holy Communion, 10.00am Family Service. Contact us on 67772543 or email walchaanglican@gmail.com

PRESBYTERIAN

Walcha - Sunday - 9.30am Everybody welcome to join us. For info call Graham Barnes 6777 2539

CATHOLIC

Sunday 10.00am Mass

classifieds



For Sale

2 Furrow Mulboard Plough and a Ferguson 9 tyne scarifier. Ph 0429 772 443.

Wanted to buy

Rabbit traps and/or Dingo traps. Please contact 0427 104 123.



Funeral Notice

WALL: BRIAN JOHN

13th June 2022

Of "Summerfield" Lakes Road, Walcha
Much loved husband of Ros, loved father of
Jacqui Dunn and Simon Wall. Loved father-
in-law and grandfather of his family.

Aged 77 years

Funeral to be held at St Patrick's Catholic
Church, Walcha Wednesday, 22nd June
2022 commencing at 2pm followed by
interment at the Walcha Catholic Cemetery.

Piddington's AFDA

JUDY MAREE SMOLDERS

27/5/1948 – 16/6/2022

Precious wife of John

Adored mother of Jonathon (dec) and Jodi.
Cherished grandmother to Chloe & Michael
Great grandmother to her sweet peas Olivia,
Ellody, Heidi & Easton

Loved mother in law to and grandmother in
law to James, Jason & Megan

Service will be held at Piddington's Armidale,
Thursday 23rd June, 2.00pm.

'Your wings were ready but our hearts were not'

Public Notices

DRAFT Plans for Community Review Until 22 June 2022



Council at an Extra Ordinary Meeting of
Council, reviewed and updated its DRAFT
Community Strategic Plan 2032 and has
now placed it on another 28 days public
exhibition for the community to review.

Council also adopted its Draft Delivery
Program and 2022-2023 Operational Plan,
which includes the budget, fees and charges
and revenue policy, and has placed it on
public exhibition for 28 days as well.

All documents can be viewed on our website:
<https://www.walcha.nsw.gov.au/news/draft-community-strategic-plan-and-operational-plan-2022-2023.aspx>

until 5:00pm Wednesday 22 June 2022.
During this time written submissions on
the draft Plans will be received by Council.
Please send any submission via email:
council@walcha.nsw.gov.au or Post: PO
Box 2, Walcha NSW 2354. All submissions
will be reviewed by Council before the
documents are ADOPTED on 29 June 2022.

Barry Omundson, General Manager
Walcha Council, PO Box 2
Walcha NSW 235

DR GENEVIEVE FREER

Phone 6777 2068 0429 668 583

ST PATRICKS SCHOOL

OPEN MORNING POSTPONED

Due to illness

New date is Thursday 21st July.

Raffle Result

Walcha Poultry Club wood won by Ben Little
and Robyn Scully. Drawn by Bec Osland.

For Rent

House to Rent

Phone Pam Makeham 0429 772 419

Meetings

Walcha Support Group Inc. Thursday 30
June 1pm, WCCC Rooms, Middle Street.
All Welcome.

Friends of Riverview AGM Wed 6 July,
4.00pm in Willow Wing. Everyone welcome.

Walcha Garden Club meeting Friday 1st
July, commencing 9.30am at the Walcha
Tennis Club. Enquiries: D. Bazeley 0403 464
865, D.Lisle 0429 799 083. New members
most welcome.

Position Vacant



Merchandise Store Person

Elders Walcha is looking an energetic,
proactive individual to join the team in our
Merchandise Sector.

Responsibilities

- Assisting in the safe storage of rural products
- Handling, receiving, and dispatching of store stock
- Performing rural products and logistics support
- Providing administrative support for the processing of sales
- Performing rural products sales (in store) as well as general shed and yard duties

About you

- Are committed to the provision of high-quality customer service.
- Can demonstrate high-quality written and verbal communication and customer service skills, along with basic computer skills
- Are able to work independently and have good time management skills.
- Ideally have some previous sales and warehouse experience.
- Have a driver's licence.
- A Forklift licence is preferred but not essential.

Training will be provided to the right candidate.

If you think this position is for you email resume to DG_Walcha@elders.com.au or come in store and speak to Tom Henry.

Tom Henry – Branch Manager

0409 659 877

Tourism Officer

Part Time Permanent



The key focus of this position is to coordinate the day-to-day operations of the Visitor Information Centre and to develop and coordinate the overall marketing and tourism events, activities, and associated product development for Walcha Council. This position is permanent part time with minimum hours of 22.5 hours.

The salary and conditions will be in accordance with the Local Government (State) Award 2020, Grade 3 Operational Band 1 Level 4. Council is an EEO employer and offers a smoke free workplace.

To apply, visit Council's website at <https://www.walcha.nsw.gov.au/council/positions-vacant>.

Further information may be obtained by contacting Council's Director of Community & Tourism Karen Kermode on 02 6774 2500.

Applications close Sunday 10th July 2022.

Barry Omundson, General Manager
Walcha Council, PO Box 2
Walcha NSW 2354

Nominations for Council Advisory Committees



Council is seeking nominations from
community members to serve on the following
Walcha Council Advisory Committees:

- Community Care Advisory Committee (additional members)
- Tourism Advisory Committee

No particular qualifications are necessary though a commitment to the activities of each Committee and a willingness to be actively involved in issues or events of the Committee are essential.

Anyone interested in serving on these Committees should pick up a nomination form from the Council Office or download it from our website: <https://www.walcha.nsw.gov.au/news>. Current and past Committee Members are encouraged to apply. Nominations must be submitted to Council by 5:00pm Thursday 23 June 2022. For further information please contact Council on 6774 2500.

Barry Omundson, General Manager
Walcha Council, PO Box 2
Walcha NSW 2354

trade and professions



CURTIS MOWERS & SMALL ENGINES

SERVICE + REPAIR

- Mowers
- Chainsaws
- Ride-ons
- Pumps
- Whipper snippers
- Chain Sharpening
- Bar Dressing

ALL
TYPES

NOW SELLING

- New 30 & 40 Tonne Petrol Hydraulic
- **WOOD SPLITTERS**
- From \$3100 delivered
- Chainsaw chain

JAMES – 0488 020 762 (7 Days)

Dry & Seasoned Firewood

- Box wood
- Iron Bark
- Blue Gum
- Stringy Bark
- Split or log form
- Strainer posts

For pick-up or delivery



*Truck & Dog Hire *Small Tipper Hire

Phone Damian 0418 452 333

SPLITZAIR WALCHA

- AIR CONDITIONING & ELECTRICAL
- Domestic & Commercial
- Split system specialists



Dave 0438 007 275 Lic. 182154c

JK PACIFIC TILING

WALL & FLOOR TILING
WATERPROOFING

0419 972 129

Email: jake.kerby@hotmail.com
ABN: 76781656814 Licence no: 335540c

ANGUS CRAWFORD PLUMBING
0407 192 192
A_C_P@outlook.com
Licence. 313605C

A G W RURAL CONTRACTING

GPS Equipped boom spraying
Andrew Wauch 0427 549 748

M L MASSAGE THERAPY
Remedial and Sport Massage
MADDIE LANCE
WED & THURS 9AM - 6:30PM
0432 635 994

MOBILE TREATMENTS AVAILABLE

STORAGE CENTRE WALCHA

20' Containers available for rent \$30 pw + GST
Secure Undercover parking for cars, vans etc \$10 pw + GST
ANGUS 0427 787 332

SELF STORAGE

NORTH STREET – WALCHA
VARIOUS SIZED SHEDS
SECURITY FENCED
67773899 0428 653 307

CHIROPRACTOR

K Samantha Goor

B.Sc. Anatomy (NSW) M Chiroprac (Macq)
Tuesday & Friday from 9.00am
6777 1340

ENGINEERING

John Wall

• Stock floats • Feeders • Sheep & cattle yards • Steel framed sheds & mobile welding
6778 0588 • 0428 778 087

STACES FAST FREIGHT

Delivering
Tamworth – Walcha
0429 608 409



ELECTRICIAN

Ian & Cheryl Cameron

• Installations • Repairs
• Household wiring
6777 1190 Lic. 46478C

MOBILE-FIX AUTO + AIR
Mobile Repairer & Airconditioning Specialist
Licenced Vehicle Repairer
Lic.No.46696 RTA Lic No. AU22616
PATRICK STACE – WALCHA
Mob. 0428 780 077 Ph. 6778 0595

Tree lopping
Tree removal
Truck & chipper
Bobcat
Post hole digger
Trencher
Woolshed cleaning
Stockyard cleaning

Scott Kermode
0427 100 889

TREETOP services
treetopservices@bigpond.com

GRAPHIC DESIGN

CORPORATE IDENTITY & LOGO DESIGN
BRAND GUIDELINES • SIGNS • BOOKS & MAGAZINES
ANNUAL REPORTS • CATALOGUES • BUSINESS CARDS
0418 281 489 • OSCARWAUGH@GMAIL.COM

DISCLAIMER: LETTERS TO THE EDITOR are submitted on the condition that The Walcha Telecottage as the publisher of The Apsley Advocate may edit and has the right to, and license third parties to reproduce in electronic form and communicate these letters.

The Apsley Advocate is printed by The Walcha Telecottage, PO Box 116 Walcha NSW 2354. Phone 6777 1111 Fax 6777 1112.

The Walcha Technology Co Operative Limited, the Editor and Staff of this Newspaper have published any article here-in in good faith and bear no responsibility in respect to the accuracy of the information contained in such article. Any person or persons publishing material in this Newspaper do so in the knowledge that they shall personally accept any responsibility for the accuracy and other correctness of such articles and also accept full responsibility for the legal consequences if it be found that the article contains any inaccuracies in the contents of any such articles.

DEADLINE MONDAY 4.30PM.

Editor: Anthea Macpherson. Advertising and Sport: Rosalie Gibson, Megan Scrivener and Sue Jackson.

Nick Moore PLUMBING & EXCAVATION SERVICES



Highly qualified and experienced plumber
All aspects of Plumbing and Gas Fitting
Wood heater installation
Roofing and Guttering
Gold Licence No 59555C

Nick 0418 691 306

nickmoore203@yahoo.com.au
Katy 0422 034 660

Marchant Est. 2000

BROS. LTD



A FULL RANGE OF AFFORDABLE TRANSPORT & EARTHMOVING
COMMERCIAL WATER CARTING
 Dam construction/maintenance, stick raking, road building,
 site prep, pipe laying and all timber work.

Check out our website for the full range of machinery,
 attachments and services available



Earthmoving and Heavy Haulage Transport
Jason 0427 490 487
 02 6777 2024 marchantbros@bigpond.com
 www.marchantbros.com.au

WALCHA BOWLING & RECREATION CLUB

**THIS
 SUNDAY**

**MEMBERS DRAW
 \$800**

YOU MUST BE A MEMBER FOR
 2021/2022 TO BE ELIGIBLE TO WIN

Thursday 23 June

9.30am for 10am – Ladies Bowls
 1.00pm Social Bowls – all welcome

Friday 24 June

2.00pm BINGO
 6.00pm Bistro – Menu:
 Homemade Lasagna
 Baked Lemon and garlic butter fish
 Pork Schnitzel & creamy mustard sauce
 7.00pm Fruit & Veg raffles
 followed by Members Draw

Saturday 25 June

6.00pm Bistro
Sunday 26 June
 12.00pm Bistro open
 1.00pm Meat, fruit & veg raffles



LEAGUE HOME GAME

1.00pm Sunday 26 June

WALCHA / URALLA
 - V -
TINGHA

TOM'S COLOURFUL
 COCKTAIL
 OF THE WEEK  *Cuddles
 on the
 Beach*

Monday to Wednesday 4.00pm to close
 Thursday 12 midday to close
 Friday 2.00pm to close
 Saturday and Sunday 11am to close
Phone 6777 2077

Do you live in Walcha Shire?
 If so you **MUST** be a member
 to enter the Club.
 Social Membership \$15
 Full Membership \$105

FOR ALL YOUR EARTHWORKS TRANSPORT AND ELECTRICAL NEEDS



Freight & Transport

Machinery Float

Road building and maintenance

Dam maintenance and construction

Firebreaks • Drilling • Trenching • Stick Raking

Mulching • Fence Clearing • General Earthworks

Erosion Control • Site Preparation

Electrical • Pipe Laying

10ft Slashing

Ian Notley 04188 29188

Mark Notley 0422 637 686

Office 02 6777 6595



ALL ASPECTS OF RURAL,
 COMMERCIAL & CIVIL WORKS
 www.eteservices.com.au

LINMAC ENGINEERING

IF YOU NEED IT
- We make it!

**CUSTOM TRAYS
 & TIPPERS**



- Customer consultations to make sure we build to YOUR individual specifications
- Sandblasted and powdercoated
- Toolboxes, timber floors, tipper trays, water tanks ... whatever you need!

**HUSQVARNA
 DEALER**

**PURCHASE
 A CHAINSAW**

in the months of
 June, July & August

for a chance to
**WIN A CHAINSAW
 ACCESSORIES
 PACK**



Facebook page: Linmac Engineering Walcha

211N Pakington Street WALCHA
 Phone 6777 2822 Email linmac1@nsw.chariot.net.au