

THE APSLEY Advocate

CIRCULATION 1810 P 02 6777 1111 F 02 6777 1112 wtc@walchatelecottage.com.au walchatelecottage.com.au

15 June 2022

Westlawn Insurance Brokers

PROTECT WHAT'S
IMPORTANT TO YOU!

- ✓ Rural
- ✓ Hobby Farm
- ✓ Heavy Machinery
- ✓ Public Liability
- ✓ Home & Contents
- ✓ Motor Vehicles
- ✓ Business

FREE QUOTES
(02) 6778 0099
or 0418 746 804

Call ahead - I'm often out and
about visiting clients

Email: trinaf@westlawn.com.au

27W Fitzroy St, Walcha
Mon-Fri 8.30am to 5pm

Westlawn
Steadfast

Westlawn Insurance Brokers Pty Ltd
ABN 65 075 847 291 AFSL No. 246520

• • LINDEN HOUSE • • OFFICE SPACE FOR RENT



Adjacent to the
Walcha Telecottage

- Fully renovated
- One room available
- Currently furnished
with one large desk

For enquiries please call
Anthea 0428 498 088

Dig deep this weekend for Troy

By A.J. Cross

Country singing sensation Lane Pittman will be providing the entertainment when a fundraising auction for local Council employee and former Walcha Rams player, Troy Le Strande, is being held this Saturday 18 June at the Walcha Bowling Club.

All proceeds from the evening will go towards Troy to assist him recover from the ill health he has been experiencing over the past couple of months.

The concert performed by the 16 year old, who was coached by Keith Urban on *The Voice Australia* recently, will be free of charge, but there is going to be a 'Donate-a-note' bucket at the door for anyone who is in a position to chip in. Not compulsory, but greatly appreciated will be any note from \$5 to \$100.

Please be aware the Bowling Club will have very limited 'cash out' available so make sure you bring cash where possible.

There are too many auction items to list, but to say a large variety will be on offer would be an understatement.

Auctioneer Mat Larkings from Nutrien Boultons has re-arranged his weekend so he can attend and carry out the most important job on the night.



On top of that a monster raffle is also up for grabs with tickets available for just \$1.00 at both the New England Hotel and Bowling Club.

A number of Troy's family members and friends are expected to attend from the Central Coast, and although Troy is hoping to be in attendance, hospital restrictions may determine if he can or not.

The Le Strande family would like to thank chief organiser Rebecca Taiki for all the time and effort she has put into the fundraiser, while 'Bec' on the other hand would like to thank all the local and surrounding businesses who have donated towards the auction and raffle.

All the action kicks off around 5:30pm, after the Rugby League presentations and awards are made following the Walcha/Uralla v Boomerangs game at Peter Fenwicke Oval. Hope to see you there.

COME IN STORE FOR E.O.F.Y FENCING NEEDS

GALLAGHER
10% OFF
GALLAGHER WEID
& REID RANGE and
GALLAGHER W-O
WEIGH SCALE &
LOAD BAR BUNDLE

WARATAH
BUY \$7,500 worth of
Waratah products*
and be eligible to RECEIVE
a Weber Baby Q, BBQ
cover & roasting pack
(RRP \$550.00)

AVAILABLE AT
WVS
WALCHA VETERINARY SUPPLIES
6777 2588
www.wvs.com.au
6 Aberbaldie Road, Walcha



OK EARTHMOVING

Specialising in road construction & maintenance

• Stickraking • Dam building • Erosion works



Bulldozers • Excavator • Tip-truck • Vibrating Roller

PH 6777 7430 FAX 6777 7448

PETER O'KEEFE: 0429 944 821

around the traps



By BRUCE RUTHERFORD

It has been wonderful to see a bit of warmer weather this last few days after such a cold start to winter. People I have spoken with this last week or so are saying they can't remember a colder start to winter, and I must say I agree. A combination of wind, cold temperatures and a bit of moisture in the air has been pretty hard to cope with. There are a few producers shearing sheep over the last couple of weeks and weather conditions have not been so conducive to that. I can't imagine how cold it has been if you were working in a breezy old wool shed, not to mention trying to keep shorn sheep alive. I really hope we see the temperatures improve and we see a bit of sunshine if for no other reason than to see the shorn sheep doing it a bit easier.

I am seeing a bit of commentary about the possibility of another LaNina event this spring. Apparently the conditions are right and the probability is that we are in for another wet spring. That cannot be discounted when it comes to livestock production and also grain production. It has been a long time since we have had three wet spring seasons in a row and I certainly am having trouble thinking of a time when we have, but that is not saying much. Grain producers have struggled to get crops in the ground this autumn and many in the central west in particular are still trying. It has simply been too wet to get on and prepare the country and then plant it. However, things have turned around a little and there is plenty of dear diesel being used right now. The crop is going in where it has dried out enough. If we do have a wet spring, hopefully their endeavours will be rewarded.

A wet spring would undoubtedly play a part in holding livestock values at the higher end rather than seeing them fall away as predicted at one point. I did hear our market analyst Simon Quilty talking about the prospects for livestock values going forward, and his take on it was that America is in a massive drought with a lot of cows being slaughtered as a result. The American cattle herd is going backwards, at pace according to Simon, and that is going to play into Australian beef producer's hands at the end of the year. In the immediate term, the Americans are unloading cattle as fast as they can, but eventually it will lead to a shortage of beef in many export markets and higher prices. That was certainly my understanding of the comments Simon made last week, and his view was that values for us could actually increase early next year as demand overpowers supply. That may well be ongoing for several years as the Americans then have to rebuild their herd.

My positive comments last week about the sheep and lamb market certainly were poorly timed! A few good days in the market with substantial gains appeared to be the rise we have all been expecting for some time. However, by the end of the week the market was losing ground again and most of the gains from the previous week have been reversed. It is hard to make selling decisions about selling your lambs when one week the market can be \$20 dearer than the next and visa versa. It is all over the place and probably why so many producers are looking to contract their lambs rather than take the risk. Last Wednesday Cowra yarded 7,800 sheep and lambs, around 3,800 more than the previous week. The market corrected by around \$8 to \$15 which is significant and disappointing if you are a seller. On the same day Carcoar yarded 12,950 which was an increase of 6,600 on the previous week. The market was also cheaper, quoted anywhere from \$5 to \$13 cheaper for a yarding described as very good quality. Wagga yarded just on 49,000 sheep and lambs on Thursday which was also an increase of around 8,000 on the previous, much dearer market. Bidding was selective, and some export buyers did not operate according to the report. Prices were cheaper as a result. It is certainly hard to pick the right week to go, but with a short week the following week, the increased numbers must be harder to soak up.

The cattle market by comparison seems to be just bubbling along and prices have remained firm to dearer for much of the week. Numbers have dropped off in many centres over the last few weeks following the period of wet weather across a vast area in the eastern states. It will be interesting to see what happens to numbers after the end of the financial year, as some are suggesting numbers are being held back. I am not sure that makes much difference, but we will see.



**BROOKLYN
QUARRY**

Taking orders today!

*Brooklyn Quarry is your local
Walcha Hard Rock Quarry.*

*Our Quarry Products are perfect
for rural roads that have been
washed out with the recent rains!*

*We have a variety of products that
will suit your every need:
big rocks, small rocks,
rocks of any size!*

Prompt local delivery to you

*Contact us today to have a
conversation with one of our team.*

Have a rock solid day!

**Experienced
Positions
Available:**

**> HC Truck +
Dog driver**

**> Excavator
Operator**

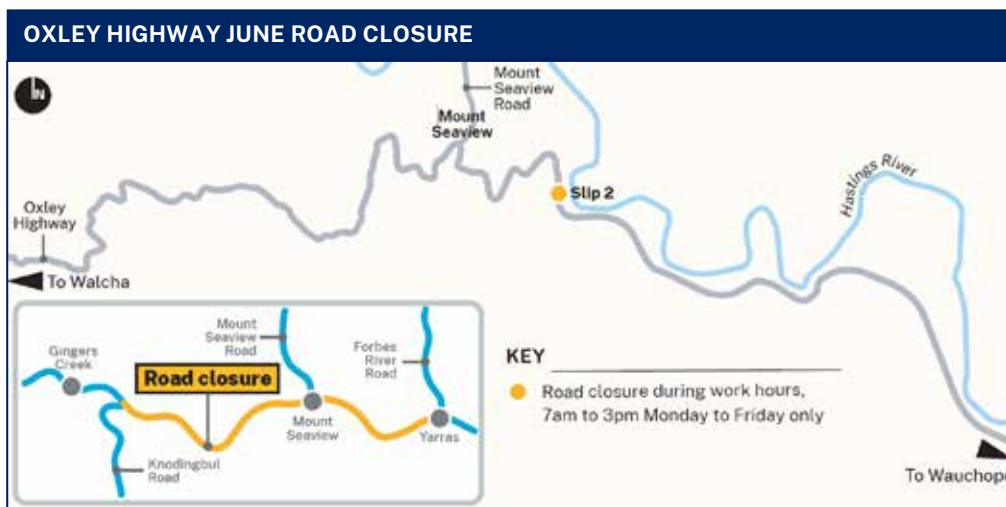
SCOTT@BROOKLYNQUARRY.COM.AU

0434 011 570

1643 OXLEY HWY, WALCHA RD. NSW
(BY APPOINTMENT ONLY)

WWW.BROOKLYNQUARRY.COM.AU

Oxley Highway closed from today



Essential maintenance work on the Oxley Highway at Mount Seaview will see the road closed from today for two weeks.

The road will close between 7am and 3pm Monday to Friday, weather permitting. "We need to close the road as the work area is too narrow for large machinery to work safely beside traffic," Transport for NSW said.

The work being carried out is to repair slips which have occurred during recent flooding.

The road closure is between Knodingbul and

Forbes River roads, with residents affected by the closure being contacted by the project team.

If you are planning a trip to Port Macquarie over the coming month, plan your journey so that you avoid the area during work hours.

"We encourage motorists to check for traffic updates through livetraffic.com, or you can sign up for SMS alerts at nswroads.work/oxleysmsalert."

Fundraiser to help with costs following tragedy

Following the tragic death of two Walcha residents last week in a car accident, Walcha's Oxley Riders Club are joining forces with Walcha Caravan Park owners Luke and Tammy to raise money for their funeral costs this Saturday.

"We are certainly aware of the clash of dates with a fundraiser also on the same night for Troy Le Strande," President Shane Carey said.

"Luke from the Caravan Park has had this band booked for many months and with the circumstances he has allowed the Oxley Riders to use this existing booking as a fundraiser for the family to help with costs following the tragedy," he said.

The band, *Adrenaline Crush* will play from 6pm to 11pm this Saturday at the Caravan Park. It is a family friendly event with a sausage sizzle running on the night, and BYO drinks.

Oxley Riders will have a member at the gate of the Caravan Park who will have a bucket collecting donations for those who can't stay and would like to donate.

Raffle tickets are also available at Thunderbolts Cafe, John Stuart, Walcha Caravan Park, New England Hotel and WVS.

Nutrien
Boulton's

Stock and Property Watch

www.nutrienharcourts.com.au

First Home buyer or investor



- Two bedroom fibro iron home
- Good sized lounge with wood heater and reverse cycle
- Well appointed kitchen with electric stove
- Bathroom with shower and separate toilet
- Deck for those lovely afternoon drinks
- Landscaped yard, including two garden sheds and mens shed. Drive through carport with access to the backyard
- This tidy home wont last so get in quick



\$310,000



AuctionsPlus™

Friday 17th June 2022

**A/c – OLSLAND PARTNERSHIP
30 EU PTIC HEIFERS**

Phone
Mat Larkings
0427 002 427

3n Derby Street Walcha. Phone 6777 2044

AUCTION

"SUNNY RIDGE"
33 Ohio North Road, Walcha

57.9 ha / 143 ac

A wonderful, rare opportunity to purchase quality acreage only minutes from the centre of town

**There is so much to like about this property
IT IS A MUST TO INSPECT**

- Walking distance to town on the northern side
- Beautiful, undulating country with plenty of trees and open grazing
- 2 dams providing stock water. Plenty of rainwater storage for domestic use
- Comfortable 3 B/R home – recently painted inside and new floor coverings

**Prime Position
RARE SIZE &
LIFESTYLE
OPPORTUNITY**

**AUCTION
21ST JULY, 11AM
at Walcha Vet Supplies**

Nutrien
Boulton's

6777 2044

Bruce Rutherford 0428 660 328

SELLING AGENTS

—Pitt Son's—

6777 2000

Andrew Blomfield 0428 667 402

Flowers brighten travellers' stop

Thank you to the *Phantom Flower Arranger* for always making sure our McHattan Park rest rooms are welcoming for visitors. Last week a very grateful traveller left this message.



21T EXCAVATOR

with log grab and buckets

Available for all timber work or dam cleaning

Fully insured
Competitive rates

Please call Andrew Wark
0427 040 832



TOP 1% MBS

\$50/Straw

SEMEN FOR SALE

Do you want to improve your Bottom Line?

Can't afford the price of bulls this year?

Why not try AI to make the bull you have go further!

We have Semen Packages available from \$50.00 p/straw on a commercial basis from bulls within the top 1% for MBS EBV's within the Wagyu Breed.

WAGYU F1's are currently selling up to \$10 p/kg lwt

BULLS FOR SALE

Come see us at Northern Beef Week

Tuesday 21st June

Contact David Woodley 'Mullabrook' Niangala
02 6769 2395 www.rocalawagyu.com



If nothing changes, nothing changes

Nestled in the hills of Southern New England is Walcha, a beautiful and quiet town, steeped in history and founded on the economies of sheep, cattle, and timber. We are small and do not always agree on everything, but when we pull together as a community, I pity anyone that gets in our way. In the words of Dr Jones, we certainly "punch above our weight."

Despite all this, the Walcha LGA has a declining population and limited development opportunities, up until now. Further constraining the declining population, Walcha's demographic age distribution demonstrates Walcha population when compared to other NSW and Australia LGA's is significantly below average in the 15 – 40 age groups and significantly above average in the 50 – 80 age groups. These age distributions explain why the Rugby Union and the Rugby League clubs find it difficult to field three teams, combined. Local cricket clubs, due to a lack of numbers, experience a comparable circumstance.

Our town has changed. Banks, pubs, and clubs are closing and reducing services, the sales yards and the mill have closed. Consequently, there are less agents and services.

In agricultural terms, family farms in recent years have experienced increased pressure to survive, primarily due to unpredictable markets and drought years that are more frequent and prolonged in duration. The past two and a half years have been the best many of us can remember, and certainly anyone could hope for. However, the seven years prior to 2020 placed the whole of Walcha LGA, and indeed all Eastern Australia, under enormous economic, social, and environmental pressure. Poor seasons and unpredictable markets have a severe and detrimental effect on Walcha's sustained future.

In the last 20 years there have been three attempts by the NSW government to amalgamate Walcha Council with Armidale and other Councils. We survived these attempts, however only just. It is only

a matter of time before the next amalgamation presents itself and unless we do something different, it is inevitable the Walcha Council will not survive. Unless we do something different.

In late 2021, the NSW Government designated the New England as a Renewable Energy Zone (REZ), which includes the Walcha LGA and multiple existing development applications in process.

This designation is a significant opportunity for Walcha to generate and supply electricity to Eastern Australia and be a part of major infrastructure development of national importance. These developments will assist to differentiate and increase Walcha's economy in the order of millions, known for the next forty-five prospective years.

With a strong financial and socially sound community, the Walcha LGA can position ourselves to howl down any future amalgamation orders. And as years progress, hopefully Walcha's population and demographic distribution, by age, will improve by attracting and retaining younger people to be a part of the Walcha community and ensure our future.

Considering the big picture, Walcha will supply renewable energy to Eastern Australia and replace fossil fuel generated electricity. Our Australian Government and most global governments have committed to time-based carbon reduction targets. We should not underestimate Walcha's contribution to the achievement of such goals.

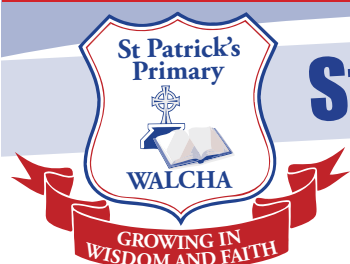
The Walcha community is at a crossroad. We can do nothing and take our chances with predicted unfavourable seasons and changing markets. We can watch our town population continue to diminish as the older population pass away, or we can embrace renewable energy generation that contributes to ensuring a stronger, more economically diverse future for the Walcha community.

Warwick Fletcher

KINDERGARTEN 2023 OPEN MORNING

23rd June – 9:30am -11:00am

RSVP 6777 2328 or spwadmin@arm.catholic.edu.au



St Patrick's Primary School Walcha

GROWING IN WISDOM AND FAITH



ENROLLING NOW!



Local Land
Services



1080 Aerial and Ground Baiting For Wild Dog & Fox Control 2022

Northern Tablelands Local Land Services, NSW National Parks and Wildlife Service (NPWS) and Forestry Corporation of NSW wish to advise they will be carrying out 1080 poison aerial and ground baiting for wild dog and fox control, commencing 20 May and to be completed by the June 2022.

This baiting program will be carried out in conjunction with the following Wild Dog Control Associations: Ashford, Atholwood, Bald Nob - Skeleton Creek, Baldersleigh, Boonoo Boonoo, Bundarra, Cataract River, Chandler River, Cooney Creek, Copeton, Deepwater - 10 Mile, Donnybrook - Leeches Gully, Dundee - Glen Elgin, Elsmore, Emmaville, Enmore - Blue Knobby, Jeogla, Kooreelah, Liston, McLeods Creek - Lower Rocky River, Mingoola - Mole River, Moona - Winterbourne, Mt MacKenzie, New Koreelah, Niangala - Nowendoc, Nullamanna - Wellingrove, Pyes Creek, Red Range - Pinkett, Rocky Creek, Rocky Dam, Rummeries Hill, Sandy Flat, South Valley, Steinbrook, Tenterden, Torrington, Upper Severn River, Wards Mistake, Wongwibinda, Yarrowitch - Tia, Yarrowyck and Yetman

Baiting will be undertaken on the following NPWS managed lands:

Avondale SCA, Back River NR, Bagul Waajaarr NR, Bald Rock NP, Barool NP, Basket Swamp NP, Bluff River NR, Bolivia Hill NR, Booroolong NR, Bulagaranda (Mount Yarrowyck) AA, Burrall Yurrul NR & NP, Butterleaf NP & SCA, Capoompeta NP, Captains Creek NR, Cataract NP & SCA, Cathedral Rock NP, Cottan-Bimbang NP, Crooked Creek NP, Cunawarra NP, Curracabundi NP, Donnybrook NR, Dthinna Dthinnawan NP & NR, Forest Land FR, Gibraltar NR, Gibraltar Range NP, Guy Fawkes River NP & NR, Indwarra NP, Jobs Mountain NR, Kings Plains NP, Kooreelah NP, Kwiambal NP, Mann River NR, Maroomba SCA, Maryland NP, Mount Hyland NR, Mummel Gulf NP, New England NP, Nowendoc NP, Nullamanna NP, Nymboida NP, Oxley Wild Rivers NP & SCA, Serpentine NR, Severn River NR, Single NP, The Basin NR, Tomalla NR, Tooloom NP, Torrington SCA, Tuggolo Creek NR, Warra NP, Warrabah NP, Washpool NP & SCA and Werrikimbe NP

Baiting will occur in the following State Forests: Bald Knob, Beaury, Billilimbra, Boonoo, Brother, Butterleaf, Donaldson, Donnybrook, Doyles River, Enfield, Ewingar, Forest Land, Girard, Giro, Hanging Rock, Koreelah, Malara, Moogem, Mount Mitchell, Nowendoc, Nundle, Oakwood, Paddys Land, Riamukka, Spirabo, Styx River, Terrible Billy, Torrington, Tuggolo, Warra and Woodenbong State Forests

Baiting will occur on the Travelling Stock Reserves:

TSR 14257, TSR 67816 and TSR 810.

1080 baits pose a high risk to domestic dogs.

All domestic dogs should be kept under control and away from baiting areas at all times.

For further information please contact Northern Tablelands Local Land Services:

02 6732 8800 (Glen Innes), 02 6770 2000 (Armidale), 02 6739 1400 (Tenterfield), 02 6720 8300 (Inverell), NPWS New England Area 02 6777 4700 (Walcha), NPWS Northern Tablelands Area 02 6739 0700 (Glen Innes) NPWS North Coast 02 6652 0900 (Coffs Harbour) or Forestry Corporation of NSW on 02 6585 3744 (Wauchope) or 02 6652 0111 (Coffs Harbour).

Walcha to receive the first housing units for hospital staff



Gunnedah and Walcha are among two of the first in NSW to benefit from the NSW Government's funding boost to ensure more modern, stylish and sustainable accommodation units are available for rural and regional healthcare workers.

Member for Tamworth Kevin Anderson said the accommodation would provide high quality housing close to local health facilities.

"The new accommodation will ensure we can attract and retain the health workers we need at Gunnedah Hospital and Walcha MPS," Mr Anderson said.

"It is critical that we pave the way for the best and brightest health care workers to come to our hospital, and that means providing affordable housing for our staff."

Minister for Regional Health Bronnie Taylor said the first brand new units will be located in Gunnedah, followed by Quirindi, Walcha, Armidale, Glen Innes, Inverell and Scone.

"The NSW Government is investing more than \$75 million to deliver health worker housing and accommodation across the state, making the opportunity to live and work in and rural and region NSW even more inviting to our healthcare staff," Mrs Taylor said.

"It is wonderful to see this initiative taking shape in the Hunter New England Local Health District, and I'm excited to share that the first units will open in the region in coming months.

"Each year, our local health districts divert funds to offsite accommodation that's safe and comfortable for visiting specialists and medical staff while they're providing essential health services to our communities.

"The savings generated by this initiative will be reinvested into delivering vital health services for our rural and regional areas."

Chief Executive for Hunter New England Local Health District, Michael DiRienzo said the accommodation units have been designed to minimise environmental impact.

"Our new accommodation units are based on sustainable design principles that maximise year-round comfort and reduce running costs. Everything from the framing to fit-out has been built with recycled products," Mr DiRienzo said.

"I'm confident our specialists and contract staff will appreciate the effort put into ensuring these units are comfortable, private and close to each health facility."

BEEF WEEK OPEN DAY

Highrent, Full Circle and The Station Angus would like to invite you to a

Yarrowitch Angus Open Day Tuesday 21 June 2022

9.30am – 3.00pm on display at 'Highrent' 12524 Oxley Highway

Yearling and 18 month old Bulls that will be offered at our Annual Sale on Friday 19 August 2022, along with a sample of Heifers from our herd.

9.30AM PRESENTATION: ASPECTS OF HEIFER SELECTION

Presented by Dr Udo Mahne BVSc (Full Circle) and Dr Jo Bacon BVSc (Highrent).

Laucan Ayoub (Zoetis) and Andy Burwell will present a local case study on the use of the genetic tool Angus Heifer Select in a commercial herd.

Morning tea will be provided so come along and join us.

10.30am – 3.00pm on display at 'Marathon' Yards, 181 Chandlers Road

a selection of our Angus Bulls and Heifers. We invite you to come along and find out about our MSA success and the direction we are heading with our new stud.

Tea and coffee provided. We look forward to seeing you on the day.

www.thestationangus.com



Based largely on Kilburnie bloodlines, with added emphasis on structure. Our aim is to produce high performing, commercially focused animals.

SALE: Friday 19 August 2022
on AuctionsPlus

Jo Bacon 0429 773 938
highrentangus@gmail.com
Andy Burwell 0457 025 399
519brighton@gmail.com



We aim at producing functional and market relevant bulls that need to fit in with our commercial customer's end market.

When combining well adapted and functional maternal Eaglehawk blood lines with high performing and carcass focused Kilburnie genetics, you end up with some powerful and impressive combinations that tick a lot of boxes in this current beef market.

SALE: Friday 19 August 2022
on AuctionsPlus

Udo Mahne 0467 882 801
udomahne@me.com



Based on Bonny Brooke bloodlines, The Station Angus will offer affordable bulls for the discerning commercial breeder. While temperament is key, our main aim is to breed bulls that sire progeny with the potential to meet the highest eating quality standards.

Paddock Sales

Alan Scrivener 0457 311 952
thestationangus@gmail.com

www.thestationangus.com

Celebrating **75** YEARS

BEN NEVIS

SALE 7 SEPT 90 BULLS

OPEN DAY 21 JUNE

9.30AM – 3PM MINGARY. FREE BBQ SCOTCH FILLET LUNCH
SUPPLIED BY CROSS BROS. BUTCHERY

Enquiries: Erica Halliday on 0427 780 154
www.bennevisangus.com.au



ESTABLISHED 1947

SAVE THE DATES

BEEF WEEK OPEN DAY
TUESDAY 21ST OF JUNE

OPEN FROM 10 AM – 3 PM

On display will be all sale cattle, sires
and a selection of females

ANNUAL SALE
1PM FRIDAY 22ND OF JULY
BULLS, FEMALES, SEMEN

CONTACT US:
WWW.SOUTHCOTESHORHTORNS.COM.AU
SAMUEL & JODIE: 0456 666 086



50 YEARS OF BREEDING
SHORTHORNS



SATELLITE PROGRAMS
PROVIDE ENHANCED SIRE
EVALUATION.



THE ENTIRE SOUTHCOTE
HERD IS DNA VERIFIED & HAS
GENOMICS ENHANCED EPD'S

"RAMBRAH" 13707, OXLEY HIGHWAY, WALCHA, NSW

SOUTHCOTE
SHORTHORNS

Walcha Central School Cross Country winners 2022

Students at Walcha Central School recently competed in their School Cross Country event. Winners from the school have competed at Armidale District Cross Country with the top six placegetters qualifying for Regional competition at Coolah this week.



5/6 years: Millie, Myla & Charlotte



5/6 years: Archie, Rupert & Angus



7 years: Isobel, Christina & Charlie



7 years: Isobel, Christina & Charlie



8/9 yrs: Eliza, Sophie & Savannah



8/9 yrs: Tyler, Lincoln & Kix



10 yrs: Isabelle, Francesca & Olivia



10 yrs: Ethan, Hudson & Flynn



11yrs: Anna & Georgie



11yrs: Kobi, Simon & Hugo



12yrs: Layla, Mary-Jane & Azaria



12yrs: Cameron, Fletcher & Alex

Pitt Son's REAL ESTATE & LIVESTOCK

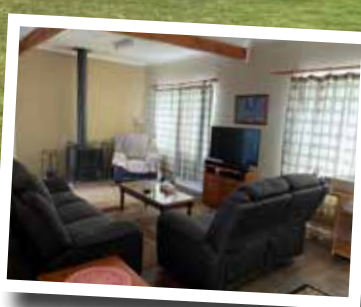
SAM PAYNE 0428 667 404 | ANDREW BLOMFIELD 0428 667 402
RON VINCENT 0427 775 821 | TROY DAVEY 0427 157 557

FOR LATEST
UPDATES



6777 2000 | www.pittsons.com.au

Cozy home on flat block



- Three bedrooms
- Spacious lounge room with wood fire
- Kitchen with views over backyard
- Bathroom with shower over tub
- Lovely flat block with two minute walk to school

REDUCED TO
\$330,000



AuctionsPlus™

This FRIDAY 17th June

A/c Oakburn Pastoral Co
50 PTIC ANGUS COWS



AuctionsPlus™

TUESDAY 21st June

A/c Summerfield Partnership
160 COMPOSITE EWE LAMBS
N.S.M. Av 46kg

What's the Goss

With A.J. CROSS



What an unbelievable heartbreaking time for members of our community all in the space of less than a week. Last Sunday Brian Wall and Jeanette Wark were both taken from us just five days after Hannah Howard and Molly Peachey were both tragically killed in a car accident at the Boxley turnoff 10 kilometres west of Walcha. Sincere sympathies to all family and friends of the four people that are no longer with us.



A minutes silence will be held in honour of Walcha Jillaroos player Hannah Howard when Walcha/Uralla play the Moree Boomerangs here at Peter Fenwicke Oval this Saturday. This will be held after the Ladies League Tag game, before the main fixture commences. Sincere condolences to all Hannah's family members and friends from both the Walcha and Uralla Rugby League Clubs. May Hannah Rest in Peace.

Pictured Jillaroo Hannah Howard



No play in the Group 19 Rugby League Competitions due to the June Long weekend, but both grades resume this Saturday when it's Walcha's turn to host our first home game of the season against the Boomerangs. All the action kicks off at 1.00pm when the Uralla/Walcha girls line up against the ladies from Moree.

After all the footy action is completed at 'The Park' players and supporters are invited to move over to the Bowling Club where presentations and awards will be made for both grades. A fundraiser auction will be then conducted for Troy LeStrande before 16 year old Country singing sensation Lane Pittman takes to the stage to provide the evening entertainment.

The Walcha Council Social Club are holding their mid year party at the Bowling Club on Saturday with the girls in the kitchen advising that once they open at lunchtime the eatery will remain open for the rest of the day, giving patrons an opportunity to dine early if they desire.

Riddle me this one Batman? If a representative of a sporting organisation in town requested to advertise a working bee next Saturday when he was talking to you the previous Sunday one would think it was fairly straight forward really. Anyway most importantly the Golf Club working Bee meant to be this Saturday went ahead last Saturday and if you are puzzled in any way please catch up with Golf Club Captain Willy Brennan for a full explanation. Do take into consideration though – he is a Queenslander.

Last week in 'Whats the Goss'. Fred Robert was listed as the winner of the 1992 Walcha A Grade Singles Bowling Club Champion which was incorrect. That should have read Fred Roper who was our across the road Apsley Street neighbour with wife Alma when my much better half Linda and myself moved into our current abode 36 years ago. Not only was Freddy a talented lawn bowler, the bloke could also play cricket where he grabbed the attention of quite a few batsmen with the pace he bowled the ball.

Let's just say the individual or persons who did the 'circle work' in their vehicles ripping up the John Oxley Sportground fields recently mustn't have any interest in local sport, going on the damage that was done. The sad thing about the whole thing is even if the offenders were caught there probably isn't a lot that could be done about it anyway.

Walcha Central School student Shaun McKenna represented North West at the NSW CHSSA Squash Championships in Thornleigh Sydney last week and although he played against opponents with a higher skill level, he thoroughly enjoyed himself despite only winning a couple of games over the three days. Good on ya Shaun, I can't remember any other student from Walcha Central being selected for representative squash, although Greg Flack was more than handy a few years back.

What's the matta Parramatta? Being fully aware that I certainly wouldn't have been the only tipster sweating on the Eels beating the Bulldogs last Monday to pick the full card, it was disappointing to see Parramatta go down so easily. If someone had offered you 291/2 points start to take the Eels there may have been some suggestion they had lost the plot, but if you did take the start, sadly you still would have lost.

Got some Goss? Then get in touch with Coog Cross.



45ft flat top • 45ft single deck cattle float • 26mtr B Double
19mtr mini B Double • Low Loader available for hire



BRIAN
Smith
TIMBER
TRANSPORT

Call us for
your large
Transport
needs

WALCHA
02 67772126

Bonnie Smith 0429 772 077
Brian Smith 0427 780 216

Gun Club

Saturday 11 June we hosted 15 die hard shooters as attested by the weather temperature at 3.00pm – 4 degrees with a wind chill factor of -7.5 degrees. We thank our visitors from Scone, Tamworth, Guyra, Gunnedah and our local shooters for making the effort to support our growing Club.

The day's events consisted of three 50 target events with Kevin Bourke winning Overall High Gun. Thank you to this month's sponsors, New England Hotel, Walcha.

The next Club shoot will be on Saturday 9 July commencing at 9.30am and we invite all licensed shooters to come and participate; or just come and have a look, a talk and see what happens at our Club, Bergen Road, Walcha.

Remember: stay focused on the target at hand.

Bowls

Dads Army: Ten players braved the elements on Thursday afternoon for the Dads Army games. The players were divided into a game of triples and one of pairs.

Triples winners were Noel Goodwin, Eric O'Keefe and Warwick Hogan who defeated Barry Kliendienst, Tony Asmus and Geoff Salt 21 – 11 and in the pairs Jason Asmus and John Watts won 22 – 11 against John McCormack and Mick Bullen. Noel, Eric and Warwick won the chooks and Mick Steep won the raffle.

Draw for this weekend: Saturday 12:00pm start
A Grade Singles Semi Final K Goodwin v B Kliendienst

Marker T Asmus. Pairs Semi Final: G Bird & S Goodwin v T Parker & F Cameron.

Ladies Bowls

Last Thursday cold windy conditions for the final of the Ladies Pairs Championships which resulted in a win to Pat Laurie and Jan Cross 21 – 11 over Wendy Moore and Janice Rizzi. The Ladies must be congratulated on braving the conditions. The Ivy Makeham Singles have been postponed until further notice.

This Thursday after Bowls is our monthly meeting to commence at 1.00pm.

At the 19th

Twelve time Walcha Golf Club Champion Tim Stackman and his left handed son Isaac posted a winning score of 63¼ nett and doing so took home trophies – two \$80 vouchers from Cross Bros Butchery, donated by Nutrien Boultons last Sunday.

Runners-up were Tim's uncle, Michael Stackman and Drew Bird, just half a shot away on 63¼ nett which entitled them to the first sweepstake prize.

According to the official score sheet the remaining sweepstakes went to Captain Willy Brennan and handicapper Don Brooks on 65¼, followed by current club champion Andrew Bowden and his father Jamie 66¼, Wayne Brennan and Peter Berry 66¼.

Word on the street is there was some controversy involved

in the accuracy of the second and fourth sweepstake prizes, as by all accounts there may have been some sort of wager between those two teams which rested on the final results.

Sharpest shooters at the pins were Andrew 'Buddha' Bowden (3) and Isaac 'Molly dooker' Stackman (18).

This Sunday is a Stroke Medal Round for a trophy donated by DA Locke, followed by a Stableford Round a week later, where Jack O'Hara is in charge of supplying the prize the same day the Manilla 4BBB Open is scheduled.

Last Sunday our golfing community lost two members – Jeanette Wark and Brian Wall, very sad news indeed. Heart felt sympathies from all Golf Club members goes out to both families.

Wednesday Golf

After no golfing last Wednesday due to the arctic conditions, twelve brave warriors rugged up, and took to the course on Wednesday for a very chilly start. We played a Stableford event for Pauline Carter's trophy.

The bleak conditions did not deter the winner Katie Smith with a score of 36 points.

Sweepstakes went to Cark Street on 33 and Jeannette Wark with 25.

Katie Smith also took out nearest the pin on 3, with Sally Rutherford the best on 16, and Jeanette Wark closest second shot on 9.

Today we play a stroke, putting, monthly mug, and country vets event for a trophy donated by Terry Hayes.

Walcha Central Secondary School Cross Country winners



Thomas, Riley, Charlotte and Kirra-Lee.



Hunter, Jasmine, Ivy and Shaun.

Give yourself a
BOOST

**Boost your protection and book your
COVID-19 booster at australia.gov.au**

**COVID-19
VACCINATION**

Authorised by the Australian Government, Canberra.



Positions Vacant

**CLEANER / GARDENER
PRESCHOOL
PERMANENT PART TIME
MINIMUM 15 HOURS
PER WEEK**



Council requires an additional staff member to fill a permanent part time vacancy. The successful applicant will be required to undertake cleaning and gardening duties, as specified in the position description, servicing the Walcha Preschool.

The salary and conditions shall be in accordance with the Local Government (State) Award 2020. The position has been graded in Council's Salary Structure as Grade 1. Council is an EEO employer and offers a smoke free workplace.

To apply, full details are available on Councils website at <https://www.walcha.nsw.gov.au/council/positions-vacant>.

For further information about the position, please contact Council's Director Community and Tourism Karen Kermode on 6774 2500.

Applications close Sunday 19th June 2022.

Barry Omundson, General Manager
Walcha Council, PO Box 2
Walcha NSW 2354

Public Notices

Don't miss your opportunity
to have input into the
**Council's Disability
Inclusion Action
Plan**



Complete the survey at <https://www.surveymonkey.com/r/WalchaDIAP>

or come along to our public meetings in the Community Care rooms at 11s Middle St on Wednesday, 15 June 2022 at 10am and 4pm. If you have any questions please contact Director Community & Tourism Karen Kermode on 0497 772 157.

This is your chance to tell us what you need to make Walcha more accessible and inclusive.

Barry Omundson, General Manager
Walcha Council, PO Box 2
Walcha NSW 2354

**The Story of the
Walcha Show Society**
\$25 at the Walcha Newsagency

Nominations for Council Advisory Committees



Council is seeking nominations from community members to serve on the following Walcha Council Advisory Committees:

- Community Care Advisory Committee (additional members)
- Tourism Advisory Committee

No particular qualifications are necessary though a commitment to the activities of each Committee and a willingness to be actively involved in issues or events of the Committee are essential.

Anyone interested in serving on these Committees should pick up a nomination form from the Council Office or download it from our website: <https://www.walcha.nsw.gov.au/news>. Current and past Committee Members are encouraged to apply. Nominations must be submitted to Council by 5:00pm Thursday 23 June 2022. For further information please contact Council on 6774 2500.

Barry Omundson, General Manager
Walcha Council, PO Box 2
Walcha NSW 2354

DR GENEVIEVE FREER

Phone 6777 2068 0429 668 583

BRETT DWYER MESSAGE THERAPIST

- Remedial Massage
- Sports Massage
- Dry needling
- Kinesio Taping

**Walcha
Tuesdays &
Fridays**

Call Brett 0414 349 625

Walcha Council Debt Recovery Policy Public Exhibition Until 29 June 2022



Council at its May 2022 Ordinary Meeting approved updates to the Debt Recovery Policy. This Policy will be on public exhibition on Council's website: <https://www.walcha.nsw.gov.au/news/public-exhibition-of-debt-recovery-policy.aspx> until 5pm Wednesday 29 June 2022. During this time written submissions on the Draft Policy will be received by Council.

Barry Omundson, General Manager
Walcha Council, PO Box 2
Walcha NSW 2354

For Sale

Pedigree pure bred Labrador. One beautiful golden girl looking for her *forever home*. Vaccinated, micro-chipped, wormed and vet checked. Genuine enquires phone Bec 0428 772 246.

Black and Tan Kelpie pups. Parents both good workers. Phone Lisa 0409 443 861.

Lost

Apple Air Pods lost at the Gym last Friday. Name on case. Phone Anthea 0428 498 088.

Thank You

Allan, John, James & Kathryn would like to thank Ben & Ruth France for their help and Janice Cross who played organ and to the people who decorated the church with lovely flowers and quilts. Also a thank you to all who came to Anne Kermode's memorial service.

telecottage
WALCHA

Design, print and secretarial services.

- PHOTOCOPYING (UP TO A3)
- LAMINATING (LARGE FORMAT)
- BUSINESS CARDS
- STATIONERY
- PRINTED ENVELOPES
- INVOICE / RECEIPT BOOKS
- SALE CATALOGUES
- FLYERS AND BROCHURES
- RESUMES
- INVITATIONS AND CARDS
- CERTIFICATES
- MENUS
- PROMOTIONAL SIGNAGE/FLAGS
- MAGNETS
- STICKERS AND LABELS

Walcha Telecottage

39w Fitzroy Street, Walcha

Phone 02 6777 1111

wtc@walchateleccottage.com.au

www.walchateleccottage.com.au



DREW BIRD ELECTRICAL
Call 0456 185 304

RURAL. DOMESTIC. COMMERCIAL.
drewbirdelectrical@gmail.com Lic No.400883C

CHIROPRACTOR

K Samantha Goor

B.Sc. Anatomy (NSW) M Chiroprac (Macq)
Tuesday & Friday from 9.00am
6777 1340

GRAPHIC DESIGN

CORPORATE IDENTITY & LOGO DESIGN
BRAND GUIDELINES · SIGNS · BOOKS & MAGAZINES
ANNUAL REPORTS · CATALOGUES · BUSINESS CARDS
0418 281 489 · OSCARWAUGH@GMAIL.COM

ANGUS CRAWFORD PLUMBING
0407 192 192
A_C_P@outlook.com
Licence. 313605C

New England IT

ONSITE COMPUTER SERVICE + SALES

Tim Sutton 0414 874 523

Tree topping
Tree removal
Truck & chipper
Bobcat
Post hole digger
Trencher
Woolshed cleaning
Stockyard cleaning
Scott Kermode
0427 100 889
treetopservices@bigpond.com

DISCLAIMER: LETTERS TO THE EDITOR are submitted on the condition that The Walcha Telecottage as the publisher of The Apsley Advocate may edit and has the right to, and license third parties to reproduce in electronic form and communicate these letters.

The Apsley Advocate is printed by The Walcha Telecottage, PO Box 116 Walcha NSW 2354. Phone 6777 1111 Fax 6777 1112.

The Walcha Technology Co Operative Limited, the Editor and Staff of this Newspaper have published any article here-in in good faith and bear no responsibility in respect to the accuracy of the information contained in such article. Any person or persons publishing material in this Newspaper do so in the knowledge that they shall personally accept any responsibility for the accuracy and other correctness of such articles and also accept full responsibility for the legal consequences if it be found that the article contains any inaccuracies in the contents of any such articles.

DEADLINE MONDAY 4.30PM.

Editor: Anthea Macpherson. Advertising and Sport: Rosalie Gibson, Megan Scrivener and Sue Jackson.

MOBILE-FIX AUTO+AIR
Mobile Repairer & Airconditioning Specialist
Licensed Vehicle Repairer
Lic.No.46696 RTA Lic No. AU22616
PATRICK STACE - WALCHA
Mob. 0428 780 077 Ph. 6778 0595

STORAGE CENTRE WALCHA

20' Containers available for rent \$30 pw + GST
Secure Undercover parking for cars, vans etc \$10 pw + GST
ANGUS 0427 787 332

SELF STORAGE

NORTH STREET - WALCHA
VARIOUS SIZED SHEDS
SECURITY FENCED
67773899 0428 653 307

A G W RURAL CONTRACTING
GPS Equipped boom spraying
Andrew Wauch 0427 549 748

church notices



ANGLICAN Walcha

Sunday 19th June 10am Family Service.
Contact us on 6777 2543 or email
walchaanglican@gmail.com

PRESBYTERIAN

Walcha - Sunday - 9.30am
Everybody welcome to join us.
For info call Graham Barnes 6777 2539

CATHOLIC

Sunday 10.00am Mass

CURTIS MOWERS & SMALL ENGINES

SERVICE + REPAIR

- Mowers
- Chainsaws
- Ride-ons
- Pumps
- Whipper snippers
- Chain Sharpening
- Bar Dressing

ALL TYPES

NOW SELLING

- New 30 & 40 Tonne Petrol Hydraulic
- WOOD SPLITTERS**
From \$3100 delivered
- Chainsaw chain

JAMES - 0488 020 762 (7 Days)

Dry & Seasoned Firewood

- Box wood
- Iron Bark
- Blue Gum
- Stringy Bark
- Split or log form
- Strainer posts



For pick-up or delivery

*Truck & Dog Hire *Small Tipper Hire

Phone Damian 0418 452 333

Nick Moore PLUMBING & EXCAVATION SERVICES



Highly qualified and experienced plumber
All aspects of Plumbing and Gas Fitting
Wood heater installation
Roofing and Guttering
Gold Licence No 59555C

Nick 0418 691 306
nickmoore203@yahoo.com.au
Katy 0422 034 660



WALCHA LAW
SOLICITORS

Sophie Thomson | James Levingston

Conveyancing | Power of Attorneys
Wills | Estates | Traffic Offences

Local Firm - over 70yrs in the Community

02 6777 2066 info@walchalaw.com.au
walchalaw.com.au

INCORPORATING PATTERSON BYFIELD & BRYEN

Like to advertise on our trade page?

Small ad \$30.00 per week Large ad \$40.00 per week

Once booked you can choose to run your ad weekly, fortnightly, or once a month

Marchant Est. 2000

BROS. LTD



A FULL RANGE OF AFFORDABLE TRANSPORT & EARTHMOVING
COMMERCIAL WATER CARTING
 Dam construction/maintenance, stick raking, road building,
 site prep, pipe laying and all timber work.

Check out our website for the full range of machinery,
 attachments and services available



**DELIVERING
 SPLIT
 FIREWOOD**

ORGANIC, LOW SMOKE, HIGH HEAT.
 Beat the climate change, order now

Earthmoving and Heavy Haulage Transport
Jason 0427 490 487

02 6777 2024 marchantbros@bigpond.com
 www.marchantbros.com.au

WALCHA BOWLING & RECREATION CLUB

**THIS
 SATURDAY**

**MEMBERS DRAW
 \$750**

YOU MUST BE A MEMBER FOR
 2021/2022 TO BE ELIGIBLE TO WIN

Thursday 16 June

9.00am for 9.30am – Ladies Bowls
 1.00pm Social Bowls – all welcome

Friday 17 June

2.00pm BINGO
 6.00pm Bistro – Menu:
 Garlic Prawns & Tomato Linguine
 Chicken and Bacon Enchilada
 Beef Red Wine casserole & cheese toast
 7.00pm Fruit & Veg raffles
 followed by Members Draw

Saturday 18 June

6.00pm Bistro
Sunday 19 June
 12.00pm Bistro open
 1.00pm Meat, fruit & veg raffles

**TROY LESTRANDE
 FUNDRAISER**
 Saturday 18 June

LANE PITTMAN
 playing from 7.30pm



TOM'S *Magic Margarita*
 COLOURFUL
 COCKTAIL
 OF THE WEEK

Monday to Wednesday 4.00pm to close
 Thursday 12 midday to close
 Friday 2.00pm to close
 Saturday and Sunday 11am to close
Phone 6777 2077

Do you live in Walcha Shire?
 If so you **MUST** be a member
 to enter the Club.
 Social Membership \$15
 Full Membership \$105

FOR ALL YOUR EARTHWORKS TRANSPORT AND ELECTRICAL NEEDS



Freight & Transport

Machinery Float

Road building and maintenance

Dam maintenance and construction

Firebreaks • Drilling • Trenching • Stick Raking

Mulching • Fence Clearing • General Earthworks

Erosion Control • Site Preparation

Electrical • Pipe Laying

10ft Slashing

Ian Notley 04188 29188

Mark Notley 0422 637 686

Office 02 6777 6595



ALL ASPECTS OF RURAL,
 COMMERCIAL & CIVIL WORKS
 www.eteservices.com.au



Wayne Hoy: 0427 281 060
 Matthew Hoy: 0427 322 640
 Aaron Bullen: 0409 776 340

**SPRAYING
 SOWING**

**EXCAVATING
 EARTHMOVING**

GPS & Auto Steer Equipped

- Komatsu PC300 Excavator
- Cat 324 Excavator
- Cat D6N Dozer
- 2000ltr Quikspray Trailers
- Casotti's
- 4 x4 Tip Truck
- 4x4 Trucks & Boomsprays
- Full auto Rate Control
- GPS & Autosteer
- 4x4 Tractors GPS Equipped
- 20 & 24 disc Williams Seeders
- Fencing & Rural Contracting