

# THE APSLEY Advocate

CIRCULATION 1810 P 02 6777 1111 F 02 6777 1112 wtc@walchatelecottage.com.au walchatelecottage.com.au

8 June 2022



## EOFY SALE

AT THE  
NEW BIRDS

STARTS TODAY

**30% OFF**

• MAVI • LAYERD  
• ALL SHOES AND BOOTS

**\$10 OFF**

• SCARVES  
• BEANIES • HATS

DRY CLEANING AVAILABLE

THE NEW BIRDS BOUTIQUE  
FITZROY STREET WALCHA  
PH 6777 2002

## • • LINDEN HOUSE • • OFFICE SPACE FOR RENT



Adjacent to the  
Walcha Telecottage

- Fully renovated
- One room available
- Currently furnished with one large desk

For enquiries please call  
Anthea 0428 498 088

## State title success for local shearers



After 15 years of judging shearing competitions throughout NSW, Colin Swanton is gearing up for the National Shearing Titles to be held at Bendigo in October after being selected on the judging panel.

Colin has just returned from Dubbo where he judged the State Shearing Titles, with the top three shearers in the Open section going through to National level. Sports Shear Australia will host the championships with competitors from Tasmania, WA, VIC, SA and NSW.

Sports Shear Australia is the governing body for competition shearing and wool handling in Australia. Its aim is to promote shearing and wool handling competitions and the development of the next generation of shearers and wool handlers, while showcasing excellence.

Colin will be judging the shearers on the quality of their shearing, as well as speed. Finalists will shear 18 sheep and Colin will have the task of inspecting the sheep following shearing and will score on things such as skin cuts and wool left on the sheep.

Colin has been a regular judge in shearing competitions around Northern NSW, spending many weekends volunteering his time at local shows for

over 15 years, and mentoring young shearers. "Shearers accumulate circuit points at events throughout the year to be eligible to compete at Dubbo," Colin said.

The Dubbo event was the last on the NSW Sport Shear circuit which included Walcha Show back in March.

Two Walcha shearers, Luke Kim and Jhorden Coulter have been following the circuit, competing in the Intermediate events. They both accumulated points at eight local Shows to be eligible for the finals in Dubbo. They were both extremely happy, finishing in the Top 5 shearers in the State in the Intermediate section.

Both Luke and Jhorden work alongside Colin in shearing sheds around Walcha, and are to be congratulated on their great results in Sports Shearing.

*Pictured above: Luke Kim (centre) and Jhorden Coulter (third from right) at the State titles in Dubbo. Inset: Judge Colin Swanton heading to the National Championships*



## COME IN STORE FOR E.O.F.Y FENCING NEEDS

**GALLAGHER**



**10% OFF**  
GALLAGHER WEID  
& REID RANGE and  
GALLAGHER W-O  
WEIGH SCALE &  
LOAD BAR BUNDLE

**WARATAH**

BUY \$7,500 worth of  
Waratah products\*  
and be eligible to RECEIVE  
a Weber Baby Q, BBQ  
cover & roasting pack  
(RRP \$550.00)

AVAILABLE AT

**WVS**  
WALCHA VETERINARY SUPPLIES

**6777 2588**

www.wvs.com.au

6 Aberbaldie Road, Walcha



# OK EARTHMOVING

## Specialising in road construction & maintenance

• Stickraking • Dam building • Erosion works



Bulldozers • Excavator • Tip-truck • Vibrating Roller

**PH 6777 7430 FAX 6777 7448**

**PETER O'KEEFE: 0429 944 821**

## around the traps



By BRUCE RUTHERFORD

Winter has arrived! A cold blast this last week has really hit hard after such a mild autumn. The wind has been atrocious, with a lot of damage to trees in some parts of the district. The Golf Club certainly took a beating, which will open the course up a bit for those who find themselves amongst the trees during a round! I am told the strong winds along the top of the range and onto the eastern fall have really done some damage where soils are literally saturated, and the trees just can't hang on any longer. Following a couple of good seasons, the foliage on many of the native trees is so dense this year which is more than likely be part of the problem. More wind is forecast with another cold front coming through this week. Hopefully we will get through without too much more damage.

Not before time we are seeing much more interest in the lamb market. After a few months of sub-par prices in the lamb market, we have seen a sudden increase in values for most grades of lambs this last week. Some categories of lambs have been quoted \$10 to \$20 dearer, with increases in mutton values as well. It is far more common to see estimated carcass values in the 800 to 850 c/kg range this week which is a vast improvement over a few weeks ago. One can only hope this trend is on sound foundations and prices are sustainable. Only time will tell, but at least it is a step in the right direction.

The cattle market has remained steady this week on the back of a couple of wet weeks in the eastern states. The rain in western QLD has seen the feed starting to grow and producers out there thinking their luck may have changed. Light restocker cattle are still receiving plenty of interest and last week on AuctionsPlus the light weight steers were \$49 dearer although lower clearance rates, which generally means buyers were more selective. The EYCI has continued its upward trend this week finishing last week at 1126 c/kg, which is well above expectations of just a few weeks ago. The heavier weight classes of cattle were all cheaper and clearance rates low. Breeder cattle have come off the values of a month ago with averages in the \$2700 to \$2800 range as opposed to above \$3000 a few weeks ago. This may have a lot more to do with quality than anything else. We are at the end of the selling season.

In the fat pens Tamworth numbers were back to 1250 despite a short week next week. Values were firm for light cattle and firm to easier for the heavy cattle. Wagga yarded 2270 cattle with little change from last week. Northern restockers and feedlots were still strong on suitable lines, while the processing lines were firm to dearer for most of the better quality lines. It seems to me that values for cattle are a bit like buying milk at the supermarket, making the same price wherever you are. The headwind coming in the cattle market in the next few weeks may well be the northern live cattle trade as Indonesian buyers are backing off a little due to the elevated risks for them with Foot and Mouth disease. So far the numbers are being soaked up domestically, but I am not sure how long that will last. According to Landline, export orders for July and August are looking very thin.

The Queen's Jubilee celebrations in the UK have certainly got them all going over there. It has been full on party mode for many as they wish the Queen well and thank her for her 70 years of service. I note our new government is already starting to make the case for a republic, but I have to say I don't share their enthusiasm. I see too many governments around the world whose citizens would give their eye teeth for our system of government, which you would have to agree has been very stable for a long time. There are so many countries where governments are supposedly democratically elected, and they are clearly not. Corruption and greed get very much in the way of a good democracy. I don't trust those in power to come up with a better system than the one we have. Someone once said "If it isn't broke, don't fix it!" and I agree.

There were a few spectators who braved the rugby on Peter Fenwicke oval over the weekend, in conditions slightly better than I thought they were going to be. The Rams are struggling for player numbers this year as a number of older stalwarts have hung up their boots. I have to hand it to the Rams though, with the Red Devils coming off the back of handing out a hiding to Pirates last week, the Walcha boys stuck to the task and never gave up. Go the Rams!



**BROOKLYN  
QUARRY**

### Taking orders today!

*Brooklyn Quarry is your local  
Walcha Hard Rock Quarry.*

*Our Quarry Products are perfect  
for rural roads that have been  
washed out with the recent rains!*

*We have a variety of products that  
will suit your every need:  
big rocks, small rocks,  
rocks of any size!*

### Prompt local delivery to you

*Contact us today to have a  
conversation with one of our team.*

*Have a rock solid day!*

**Experienced  
Positions  
Available:**

**> HC Truck +  
Dog driver**

**> Excavator  
Operator**

SCOTT@BROOKLYNQUARRY.COM.AU

0434 011 570

1643 OXLEY HWY, WALCHA RD. NSW  
(BY APPOINTMENT ONLY)

WWW.BROOKLYNQUARRY.COM.AU



# Walcha Show Society says thanks to volunteers

The Walcha Show Society hosted more than 60 volunteers last Friday with a delicious lamb spit roast dinner at the Show Function Centre.

It was a great success with speakers including local historian and author, Bob Walsh presenting his new book titled "The Walcha Show Society". Walcha has been involved with Shows since 1873 and there are many interesting stories to read. Copies of the book can be purchased at the Walcha Newsagency.

Committee member Warwick Fletcher spoke of the Joan Oatley Perpetual Trophy, which is a feature equestrian event at the Show. He said this event was extremely important for competitors and the Show. Previous multiple times winner Helen Wauch was a guest at the dinner.

President Martin Oppenheimer thanked the volunteers for making the Walcha Show happen.

"I remember in late 2019 many Societies were already cancelling their Shows for early 2020, because of drought, bushfires, smoke, lack of water, lack of volunteers. But for Walcha there was never any doubt about running a Show, because we have such a wonderful, dedicated Committee and committed Volunteers."

"It was similar during the lead up to the 2021 and 2022 'COVID Safe' Shows. Walcha was one of only a few Shows in NSW to run a full Show. Again because of our Volunteers. The 2021 and 2022 Shows have been some of our most successful Shows."

"Walcha is a proud town and the fact that we have a total of 270 volunteers that help deliver Shows is a credit to the community. Thanks also to our sponsors and supporters including local businesses who contribute time and equipment."

Thanks to the Australian Government for \$5,000 under the 2021 Volunteers grants program.

New members and volunteers are always welcome at the Walcha Show Society.



Walcha Show Society President Martin Oppenheimer with Bob Walsh and his book on the Walcha Show Society

**Nutrien**  
Boulton's

**Stock and Property Watch**

[www.nutrienharcourts.com.au](http://www.nutrienharcourts.com.au)

**Opportunity**



## Waiting for the next investor

- Two Bedroom, hardiplank and iron home
- Good sized lounge with reverse cycle heating
- Large kitchen with an abundance of cupboard space
- Bathroom with large shower/vanity/toilet
- Double garage, set on a lovely flat block in quiet cul de sac
- Currently leased with excellent tenant in place

**\$280,000** ~~**\$300,000**~~

  
**AuctionsPlus**

**Friday 10 June 2022**

A/c – AH & AC POINTING

**30 EU ANGUS & SHORTHORN X  
PTIC COWS**

10 years old

A/c – GLEN AUTHY PARTNERSHIP

**20 STATION MATED ANGUS X  
HEIFERS**

Joined to LBW Angus Bull

Phone Mat Larkings 0427 002 427

**3n Derby Street Walcha. Phone 6777 2044**



## 21T EXCAVATOR

with log grab and buckets

Available for all timber work or dam cleaning

Fully insured  
Competitive rates

Please call Andrew Wark  
**0427 040 832**



45ft flat top • 45ft single deck cattle float • 26mtr B Double  
19mtr mini B Double • Low Loader available for hire



**BRIAN**  
**Smith**  
**TIMBER**  
**TRANSPORT**

Call us for  
your large  
Transport  
needs

**WALCHA**  
**02 67772126**

**Bonnie Smith 0429 772 077**  
**Brian Smith 0427 780 216**

## letters to the editor



### BMT final wrap for 2022

All I can say is WOW, WOW, WOW. The final tally for the 2022 Biggest Morning Tea is \$6730.

Once again a huge thank you everyone for your amazing support. Please accept this as my personal thanks.

In total we have now raised over \$44,200 since we held our first BMT at the Tennis Club 19 years ago.

**Jenny Hoy**

## Rebates to help with electricity costs

With winter well and truly upon us, and electricity prices on the rise, the NSW Government has a range of rebates available to assist with the cost of electricity bills.

Applications for the 2021/22 rebates expire at 11pm on 30 June 2022. Applications forms are available on the Service NSW website, and online applications are also available on the site.

### Seniors Energy Rebate

The NSW Seniors Energy Rebate is available for eligible independent self-funded retirees to help cover the cost of their electricity.

To be eligible you need to hold a Commonwealth Seniors Health Card (CSHC).

The rebate is \$200 per household, per financial year, and if your application is successful it will be paid directly into your nominated bank or credit union account.



### Family Energy Rebate

The Family Energy Rebate helps NSW family households with dependent children cover the costs of their energy bills.

To be eligible for the NSW Family Energy Rebate in a given financial year, you must:

- be a NSW resident
- be the account holder of an energy retailer
- have been the recipient of the Family Tax Benefit (FTB) for the previous financial year

### Low Income Household Rebate

The Low Income Household Rebate helps low income NSW households cover the costs of their energy bills. It is paid once each financial year.

You can apply for the Low Income Household Energy Rebate if:

- you're a NSW resident
- you're an account holder of an energy retailer
- you hold one of the following:
  - Pensioner Concession Card issued by the Department of Veterans' Affairs (DVA) or Services Australia
  - Health Care Card issued by Services Australia, or
  - DVA Gold Card marked with either 'War Widow' or 'War Widower Pension', or 'Totally and Permanently Incapacitated' (TPI) or 'Disability Pension' (EDA).



# How can we make it easier for everyone to access things around Walcha?

Walcha Council are updating their Disability Inclusion Action Plan for the coming three years and are asking for community input.

Walcha's Disability Inclusion Action Plan talks about what we want to do to make Walcha region more accessible and inclusive.

- When something is accessible, everyone can use it.
- When something is inclusive, everyone can take part.
- We want your help to update our Plan.

"We want to hear from people with a disability, support people, service providers and any other interested parties," Director of Community and Tourism, Karen Kermode said.

"We want to know what things in our Region are hard to do and what things are easy to do, and what we can do to help."

Two face to face engagement sessions will be held at the Walcha Council Community Care rooms at 11s Middle Street (behind the hospital) on Wednesday 15 June at 10.00 – 11.00am and then from 4.00 – 5.00pm. We hope you can join us," Karen commented.

Council are requesting that any feedback be provided no later than 5pm Sunday 19 June 2022.



## Ways to get involved:

- Complete the survey at <https://www.walcha.nsw.gov.au/news/community-input-on-disability-inclusion-action-plan.aspx>
- Pick up a printed survey from our Council Offices or Library
- Email your feedback to Council at [council@walcha.nsw.gov.au](mailto:council@walcha.nsw.gov.au)
- Attend the engagement session 15 June

# PKF

*PKF Chartered Accountants offer clients access to full suite of professional services including:*

- Accounting and financial reporting
- Taxation Services
- Business Support
- Superannuation
- Cash flow projections
- GST support and advice
- Bookkeeping and record systems
- Audit and assurance
- Strategic alliances

[www.pkf.com.au](http://www.pkf.com.au)  
12n Derby Street  
Walcha NSW 2354  
Phone: 6777-2377



## Winter has arrived

The average for the first week of June 2022 was 11°C, 2.5° below average. This week's forecast is set to be colder with an average maximum temperature of 7°C, a massive 6.5° below average. Rug up!

Date	Min Temp °C	Max Temp °C	Rain (mm)
1 June	2.7	7.7	8.2
2 June	0.5	12	0
3 June	-1.0	11	0
4 June	4.5	13	12.6
5 June	2	N/R	0.4
6 June	N/R	11.5	N/R
7 June	-1	N/R	0

SOURCE: Bureau of Meteorology. Woolbrook weather station.



## FINANCIAL SERVICES

- Rural and Commercial Finance
- Leasing
- Home Loans
- Insurance Premium Funding

**KEL PENFOLD**  
6766 5309 • 0427 667 118



Local Land  
Services



## 1080 Aerial and Ground Baiting For Wild Dog & Fox Control 2022

**Northern Tablelands Local Land Services, NSW National Parks and Wildlife Service (NPWS) and Forestry Corporation of NSW wish to advise they will be carrying out 1080 poison aerial and ground baiting for wild dog and fox control, commencing 20 May and to be completed by the June 2022.**

This baiting program will be carried out in conjunction with the following Wild Dog Control Associations: Ashford, Atholwood, Bald Nob - Skeleton Creek, Baldersleigh, Boonoo Boonoo, Bundarra, Cataract River, Chandler River, Cooney Creek, Copeton, Deepwater - 10 Mile, Donnybrook - Leeches Gully, Dundee - Glen Elgin, Elsmore, Emmaville, Enmore - Blue Knobby, Jeogla, Kooreelah, Liston, McLeods Creek - Lower Rocky River, Mingoola - Mole River, Moona - Winterbourne, Mt MacKenzie, New Koreelah, Niangala - Nowendoc, Nullamanna - Wellingrove, Pyes Creek, Red Range - Pinkett, Rocky Creek, Rocky Dam, Rummeries Hill, Sandy Flat, South Valley, Steinbrook, Tenterden, Torrington, Upper Severn River, Wards Mistake, Wongwibinda, Yarrowitch - Tia, Yarrowyck and Yetman

**Baiting will be undertaken on the following NPWS managed lands:** Avondale SCA, Back River NR, Bagul Waajaarr NR, Bald Rock NP, Barool NP, Basket Swamp NP, Bluff River NR, Bolivia Hill NR, Booroolong NR, Bulagaranda (Mount Yarrowyck) AA, Burrall Yurrul NR & NP, Butterleaf NP & SCA, Capompeta NP, Captains Creek NR, Cataract NP & SCA, Cathedral Rock NP, Cottan-Bimbang NP, Crooked Creek NP, Cunnamurra NP, Curracabundi NP, Donnybrook NR, Dhinna Dhinawan NP & NR, Forest Land FR, Gibraltar NR, Gibraltar Range NP, Guy Fawkes River NP & NR, Indwarra NP, Jobs Mountain NR, Kings Plains NP, Kooreelah NP, Kwiambal NP, Mann River NR, Maroomba SCA, Maryland NP, Mount Hyland NR, Mummel Gulf NP, New England NP, Nowendoc NP, Nullamanna NP, Nymboida NP, Oxley Wild Rivers NP & SCA, Serpentine NR, Severn River NR, Single NP, The Basin NR, Tomalla NR, Tooloom NP, Torrington SCA, Tuggolo Creek NR, Warra NP, Warrabah NP, Washpool NP & SCA and Werrikimbe NP

**Baiting will occur in the following State Forests:** Bald Knob, Beaury, Billilimbra, Boonoo, Brother, Butterleaf, Donaldson, Donnybrook, Doyles River, Enfield, Ewingar, Forest Land, Girard, Giro, Hanging Rock, Koreelah, Malara, Moogem, Mount Mitchell, Nowendoc, Nundle, Oakwood, Paddys Land, Riamukka, Spirabo, Styx River, Terrible Billy, Torrington, Tuggolo, Warra and Woodenbong State Forests

**Baiting will occur on the Travelling Stock Reserves:**

TSR 14257, TSR 67816 and TSR 810.

**1080 baits pose a high risk to domestic dogs. All domestic dogs should be kept under control and away from baiting areas at all times.**

**For further information please contact Northern Tablelands Local Land Services:**

02 6732 8800 (Glen Innes), 02 6770 2000 (Armidale),  
02 6739 1400 (Tenterfield), 02 6720 8300 (Inverell),  
NPWS New England Area 02 6777 4700 (Walcha),  
NPWS Northern Tablelands Area 02 6739 0700 (Glen Innes)  
NPWS North Coast 02 6652 0900 (Coffs Harbour)  
or Forestry Corporation of NSW on 02 6585 3744 (Wauchope) or  
02 6652 0111 (Coffs Harbour).

# Don't get caught by shopping scams

## What's an online shopping scam?

More than one-third of Australian households shop online. Taking advantage of this trend, scammers are setting up fake websites and deceiving people into buying from them. Once the order is placed and payment made, shoppers might receive a fake, inferior product compared to what was promised, or nothing at all. Classified scams are a subset of this type of scam, where scammers pose as genuine sellers, posting fake ads on either a classifieds website, newspaper, or via email or social media.

## How to avoid being scammed

- Be wary of any offer that seems too good to be true, such as luxury items or popular brands being offered at unusually low prices
- Don't rush or be pressured by 'limited offers' or end-of-sale 'countdowns' – scammers always try to create a sense of urgency
- Online stores or classifieds that request you use non-secure payment methods. These include wire or bank transfers, money orders, preloaded gift cards and electronic currencies like Bitcoin. It's rare you'll be able to recover money sent this way.

## How to protect yourself

- Navigate directly to an online store using your web browser, rather than by clicking an email or social media link
- Google the merchant, its online store and its products to check their reviews
- Read the comments on a store's social media ads to see what other people have to say about them
- Regularly check your statements. If you've been shopping online, keep an eye on your transaction history and report anything suspicious as soon as possible. A small, unauthorised charge can be the first sign of credit card theft – scammers often do it to check if your account is active.
- If you're not familiar with the site, be cautious of unbelievably low prices, missing privacy policies, terms and conditions or refund information, or sites that limit your payment options. It should be easy enough to contact customer service if you need help – even better if they have a phone number or physical address. A quick web search can surface reviews and other buyer's experiences.
- Think twice before connecting to free public Wi-Fi networks. Cybercriminals like to lurk on public networks and intercept your activities, or even set up rogue hotspots for you to connect to, so never shop or bank online using public Wi-Fi.
- Before you browse or shop online, ensure your computer's anti-virus is up-to-date.
- If you need to create accounts with online stores, make sure you use strong and unique passwords – don't reuse your internet banking, email or social media passwords
- Generally, debit cards don't offer the same level of buyer protection as other payment methods, so it's recommended to pay with a credit card or payment system (e.g. PayPal).
- If shopping for second hand items from social media or another online marketplace, ask as many questions as possible upfront, look at the seller's profile and past feedback; Never share your bank account details or passwords, or transfer a deposit without seeing what you're buying first.

## Case study

- Jessie, a 30 year old admin worker, found an ad on social media for a weight-loss supplement endorsed by an Australian celebrity. The product was advertised for \$29.99 and once she clicked the link, the website prompted her to enter her card details before confirming the final price. She was wary of this but decided to proceed. Once the transaction was processed, Jessie received an SMS from CBA asking if she'd made a payment of \$166.43 to a company whose name she didn't recognise. She'd been involved in a scam that advertised a product for one price and yet charged her a much higher one.



# A great night of music at Yarrowitch Hall

On Sunday night, approximately 100 music enthusiasts headed east to Yarrowitch and braved the cold to attend Woodfordia's Festival of Small Halls.

The evening commenced with a short set by Lane Pittman. This talented young singer, with ties to the Walcha Community, was recently a semi finalist on *The Voice Australia*. Mentored on the show by Keith Urban, Lane sang several songs, including his original debut single 'My Way Over You'.

Talented duo Ash & Sara from the NSW Northern Rivers followed and had toes tapping

along to their beautiful harmonies, melding Ash's folk and celtic balladry with Sara's country rhythms. Candelo based singer-songwriter Melanie Horsnell completed the evening with her beautiful emotive melodies, followed by an encore where Ash, Sara and Melanie all took to the stage.

The Yarrowitch Community Group would like to thank Erica Halliday for her wonderful job as the evening's MC, all those who baked, braved the cold weather to attend, Woodfordia Inc., the musicians, local businesses and those who supplied items for the raffle.



Left: Lane Pittman, Melanie Horsnell, Ash Bell and Sara Tindley.  
Above: Erica Halliday, Lisa Kirton, along with members of the Yarrowitch Community Group, the team from Woodfordia and the nights musicians.

thumbs



Many thanks to all the wonderful Walcha Police officers who turned out last Sunday night to find me after I suffered a bad turn and became lost and disoriented. Such wonderful kindness is exemplary. *Bruce McIntosh*

A big thank you to SES volunteers Bob, Don and Mark for securing the roof on my hay shed.

Lisa Kirton who has been a tireless worker and advocate for Walcha Tourism for many years.

To Gemma who filled an elderly lady's vehicle with fuel. Thank you very much.

To Tracey Crisp for her kindness.

To Veronica and Lorraine for always being polite and welcoming when on raffle duty.

To the Yarrowitch Community Group and the wonderful Festival of Small Halls concert on Sunday night.

**Contributions will be received in person, by phone or email and must include your name and contact details. They will be printed at the discretion of the editor.**

**Pitt Son's** REAL ESTATE & LIVESTOCK

SAM PAYNE 0428 667 404 | ANDREW BLOMFIELD 0428 667 402  
RON VINCENT 0427 775 821 | TROY DAVEY 0427 157 557

FOR LATEST UPDATES



6777 2000 | [www.pittsons.com.au](http://www.pittsons.com.au)



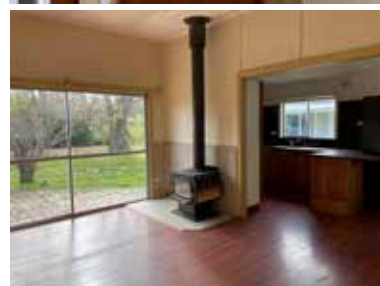
*Character & Style*

**This home is set on a lovely flat block**

- It has three bedrooms plus sleep-out with closed in verandah
- Remodelled kitchen adjoining dining area with wood fire
- Bathroom with shower, vanity & toilet
- Second shower and toilet in laundry

IT ALSO CONTAINS A FULLY SELF CONTAINED UNIT SEPARATE FROM THE HOME

**ALL THIS FOR  
\$370,000**



# What's the Goss

With A.J. CROSS



**Last Saturday evening a farewell was held** for former Walcha Council General Manager Jack O'Hara and his bride Sonia, where around 20 friends enjoyed dinner at the Top Pub in Uralla. An enjoyable night was had by all and although it will be sad to see the O'Hara's leave Walcha, hopefully we get to catch up with them at reasonably regular intervals from now on. All the very best wishes during your next chapter Johnny and Sonia.

...

**Talk about an eye for detail.** Last week my much better half Linda asked me to pick up a package from the Post Office and when she handed me the collection card, I noticed the address on it wasn't ours. After pointing that out to Linda she soon informed me the address on the card was that of the Post Office not our Apsley Street abode.

...

**Quite a few years ago my cousins,** The Shields, used to stay at the same house, then owned by my grandparents Alex and Laurel Keightley, when they visited from Tamworth for the Christmas School Holidays. Sadly we farewelled David or 'Chook', son of Auntie Leslie and Uncle Dick at Lincoln Grove Memorial Gardens in Tamworth last Friday at the much too young age of 58 years. A rough diamond with a heart of gold. May David Charles Shields Rest in Peace.



**The past 12 months have certainly whizzed past,** although at certain times the pace seemed a bit slow. This Friday will mark one year since dear old dad I.J was farewelled and is certainly missed. May Irwin John Cross continue to Rest in Peace.



**So sad to hear 1980 Dally M Medallist Robert 'Rocky' Laurie** left this world last weekend. 'The Rock' played for both South Sydney and Eastern Suburbs and also played one game for NSW in 1981. Rocky lived in Wauchope and was a regular visitor to the Walcha Races with a few of his mates, including former local Gregory 'Doey' Partridge. Condolences to his daughter Kate Lyon, along with all other family members and friends. 'The Rock' was not only a very good footy player he was a bloody good bloke. May Robert 'Rocky' Laurie Rest in Peace.



**When driving past the New England Hotel** you probably have noticed the trailer load of wood parked in Pakington Street which is the major prize in a monster raffle, part of the fundraiser for Troy LeStrande. Around 20 prizes are up for grabs in the raffle to be drawn at the big, up coming Auction Night on Saturday 18 June at the Bowling Club, following the Group 19 Rugby League. Tickets can be purchased at either the Newie or Bowling Club, or both, during both establishments' opening hours.

...

**Walcha Bowling Club Champions** Kyle Goodwin and his father Stephen are both in line to win their eleventh singles title following results from last weekend. Normie defeated Andrew McGuffog in one semifinal, while Kyle rounded up Club President Tony Asmus in a quarter final.

...

**One player Barry Kliendienst** could stand in way of both Kyle and Normie as he will take on Kyle in the remaining semi final with the winner qualifying for the final against Normie. Even 'Baz' suggested he will have his hands full which ever way it all pans out.

...

**Since 1990 only eight bowlers** have won the A Grade Singles Championship, four multiple winners and four players who have won the title once each. Kyle is the current Champion having won the title for the past seven years in succession to go with his three other victories. Normie on the other hand won his first in 1993 and his last in 2012 with both boys now searching for their eleventh crown.

...

**The two other multiple winners** have been Brian Lockyer with five wins between 1990 and 2014, while Denis 'Willy' Makeham was victorious in 2000 and 2003. Single winners were Trevor 'Kiwi' Smith 1991, Fred Robert 1992. Vidas Kulinskis 2005 and P.T. Clarke 2006.

...

Happy Queen's Birthday weekend to everyone.

## RUGBY REPORT WALCHA V GUNNEDAH



By Eric the Spider

Walcha took on Gunnedah at the Rugby Park on Saturday in cold and wintry conditions. The Rams managed to field both First and Second grade teams for the clash, which is excellent news for the club.

### Reserve Grade

The reserve grade game started with both teams looking to run the ball and play an expansive game. Gunnedah were able to take advantage early scoring two quick tries putting the Walcha Rams on the back foot. Some excellent kicking from Tom "AFL recruit" Gough gave the Rams some good field position which they were able to convert with a try of their own midway through the first half. The Walcha Rams who haven't played a lot of football together this year started to get into a groove and apply pressure of their own to the Gunnedah side, getting better and better as the game went on. Cameron "Knuckle" Norbury was leading from the front with a number of carries, getting over the advantage line. Ben "the other chicken guy" Partridge continues to perform well, with a high work rate in defence and some direct running in attack. Ben "Junkyard Dog" Burwell was at his usual menacing best, disrupting the Gunnedah forwards ball and being involved in everything around the park. Hayden "Jamillionaire" Jarman had the Gunnedah attack worried after a number of bone rattling hits in defence. The Walcha men continued to play some excellent rugby exchanging tries with Gunnedah throughout the second half. The Walcha Rams managed to score late in the game to put themselves ahead on the scoreboard. The Rams held off a late surge from Gunnedah to finish the game winners 28-26. An excellent display of rugby and shows what this group of men can do if they get a chance.

### First Grade

First grade took on the top of the table Gunnedah on Saturday in an attempt to get their season back on track. The game started with both teams struggling to hold onto the ball for any number of phases in the slippery conditions. Walcha's discipline early on in the match cost them field position, inviting the Gunnedah attack deep into Walcha's territory early. To the Rams credit they managed to hold out Gunnedah and exit their own end on a number of occasions. Gunnedah were first to score after a break up the middle resulted in a try. After this, Walcha began to hold onto the ball and put some phases together and apply pressure back on to the Gunnedah defence. Some trademark runs from Wally "the slippery Somerton sheep breeder" Davidson put Walcha in good attacking position which they managed to convert. A well worked set piece from the lineout saw Harry "the chicken guy" Locke receive the ball back on the blindside outpacing his opposite number and scoring in the corner. Walcha 5, Gunnedah 7. The rest of the half saw both teams battling for territory and field position. Unfortunately with four minutes to go the Walcha defence went to sleep which allowed the potent Gunnedah attack to score two converted tries. Halftime score Walcha 5 Gunnedah 21.

The second half began similar to the first with both teams not wanting to play too much rugby in their own end. Ross "mo Monie, mo problems" Monie was throwing his body around in defence tackling everything that ran at him.

Continued on page 9 >



Jim "Sausage dog pimp" Boyd returned the Gunnedah kicks well and found himself in some space often. As the half went on Gunnedah began to wear the Walcha defence down with Walcha missed crucial tackles allowing Gunnedah to gain easy field position and eventually scoring a couple of tries. To Walcha's credit they fought back into the game and scored another try off a lineout set piece which saw big Henry "loved up les" Leslie running a short straight line to barge his way over the try line from close. Ritchie "the wombat" Hunt was up to his burrowing best, having a number of carries from the back of the ruck making good metres. Joel "joog baby" Ballon and Toby "from Congi" got through a mountain of work together with plenty of tackles, carries and lineout wins between them. Edgar "mates call me bragsy"

Bragg continued to never give up running hard all game and tackling everything. Matt "nickname pending" Williams was in everything making a number of clean breaks and giving the Walcha backline good go forward. Unfortunately Walcha could not hang on in the second half with Gunnedah scoring a number of tries late in the half and eventually winning the game. Walcha 10, Gunnedah 45.

Next weekend Walcha have a bye due to the Country Championships. Good luck to all Walcha players involved in the Country Championships across all ages.



## WALCHA RUGBY PROUD SPONSORS



**Red Sponsors** New England Polaris, Walcha Vet Supplies, TA Fields Estates Pty Ltd, Karori, Marchant Bros Earthmoving & Transport.

**White Sponsors** Glen Collin Pastoral Co, Supermoto Armidale, Agfix, S.N. Nivison & Co, Branga Plains Pastoral Co, Ben Nevis Angus, Nerstane, Nutrien Boultons, Walcha Caravan Park, Davidson Cameron, Peter Norbury Motors. **Club Sponsors** TWM, Regional Australia Bank, Commercial Hotel, Dales Downtown Meats, DJ & CJ Kermode, MA Berry, Glenell Shorthorns, Peter & Rose McNeill, Pitt Sons, Ross & Debbie Keen, Greenwells Farming Pty Ltd, Yalgoo. **Rams Donors** Liddle Contracting, Old Woombi Poll Dorset, Angus Warden, Rose Valley Steel, Productive Pasture Solutions, Maryland White Suffolk, Cameron and Rach Greig, Peter Sendall.

advocate sport



## Rugby League

Both Uralla/Walcha Rugby League teams defeated Warialda at Woodville Oval in Uralla last Saturday and in doing so both sides notched up their second win of the Group 19 season. In the main fixture the home side converted a 18-6 halftime lead into a 28-22 victory while the Ladies League Tag won 24-4 after holding a 10-0 advantage at 'oranges'.

Second rower Harley Cox crossed for a try after just five minutes of play which winger Harley Carlon converted before fullback Shuaib Rhodes-Swain touched down midway through the opening stanza.

When Carlon raised the flags with his conversion attempt Uralla/Walcha had skipped away to a 12-0 lead which reduced to 12-6 when Warialda responded shortly after. Almost immediately the hosts bounced back with a try to bench player Lachlan Barndan and another conversion to Carlon giving them an 18-6 lead at the break.

Two tries to skipper Duncan Elks and centre Jock Abraham one of which was converted finalised the homeside scoring while the Wombats ran in two late tries but they had left their run too late.

Group B&F points 3- Duncan Elks, 1-Steve Eveleigh. Club B&F points 3-Bryce Johnson and Players Player 2-Duncan Elks, 1- Harley Carlon. Coaches award - Jock Abraham.

## Women's League Tag

Ten minutes had elapsed in the girls game against Warialda when Kirra Lee Murphy opened the scoring with a try, Joscisca Matapakia converted to record a 6-0 lead.

Deep into the first half Anika McKenna increased the point score gap to 10-0 when she touched down with no more points added before half time.

Spectators would have barely had time to finish their hot dogs when speedster Jordy Hoy increased her team's advantage to 14-0 with an unconverted try before the visitors responded with their own converted try not long later.

Six minutes from full time Rachel Green added her name to the try scoring list and then just before the final hooter Jordy Hoy registered her second try after taking a quick penalty kick tap.

When Hannah Byrne raised the flags, the score was finalised at 24-4. Group Best and Fairest points 3-Jordy Hoy, 2-Rachel Green.

Club B&F points 3-Rachel Green and Players Player, 2-Caitlin Hollis, 1-Anika McKenna/Jordy Hoy.

No Group 19 footy this weekend before resuming the following Saturday when Walcha get to host a home game here at Peter Fenwick Oval against the Moree Boomerangs.

## Bowls

### Results from the weekend:

A Grade Singles: K Goodwin def T Asmus 31-7. S Goodwin def A McGuffog 31-17.

No bowls drawn this long weekend due to the John Oxley Triple Carnival.

**Dads Army:** After a cold and windy start to the day, Thursday afternoon turned out good enough for the Dads Army crew to play.

Eight players nominated and two games of pairs was played. In the first game Barry Kliendienst and John McCormack def Noel Goodwin and John Watts 23-15 while in the second Peter Hayes and Eric O'Keefe had a win against Mick Bullen and Geoff Salt.

Barry and John McCormack won the chooks and John Watts won the raffle.

This week we welcomed Geoff Salt to our crew who had a good time.

## Ladies Bowls

In terrible conditions last Thursday the Pairs game between Pat Laurie and Jan Cross against Debbie Richards and Esther Hunt was played. This game was very close throughout and was 16 all with one end left to play with Pat and Janice scoring one to give them the win 17-16.

They will now play in the final Thursday 9th June. Their opponents are Janice Rizzi and Wendy Moore. Hope the weather is more favourable. Social Bowls will also be on.

## At the 19th

Last Sunday was a 4BBB Medley stableford round for trophies donated by Dark's Plumbing where 2003 4BBB Sandgreen Champions Wayne Brennan and Simeon Cross ran out the winners after they accumulated 44 points.

Runners-up were junior club champion Nixon Bird and his father Dion on 42 points while the remaining sweepstakes went to Drew Bird and Michael Stackman, Margaret Davidson and Jenny Lisle both on 40 points. Jack O'Hara and Deon Lawrence, Allan and Lachie Laurie, Sue Partridge and Pauline Carter all on 37 points.

No players were clever enough to reach the beach in the Nearest the Pins competition on 3 and 18.

A veterans qualifier was played in conjunction last Sunday where Wayne Brennan and Simeon Cross, Jack O'Hara and Deon Lawrence, Neil Dark and Doug McDonald all progressed to New England Vets final at Inverell Tuesday 27 September.

Following the recent windy conditions a working bee has been called to clean up the debris around the course and will commence on Saturday at 8am.

This Sunday is a 2 person ambrose for prizes supplied by Nutrien Boultons.



## Position Vacant

**CLEANER / GARDENER  
PRESCHOOL  
PERMANENT PART TIME  
MINIMUM 15 HOURS  
PER WEEK**



Council requires an additional staff member to fill a permanent part time vacancy. The successful applicant will be required to undertake cleaning and gardening duties, as specified in the position description, servicing the Walcha Preschool.

The salary and conditions shall be in accordance with the Local Government (State) Award 2020. The position has been graded in Council's Salary Structure as Grade 1. Council is an EEO employer and offers a smoke free workplace.

To apply, full details are available on Council's website at <https://www.walcha.nsw.gov.au/council/positions-vacant>.

For further information about the position, please contact Council's Director Community and Tourism Karen Kermode on 6774 2500.

Applications close Sunday 19th June 2022.

Barry Omundson, General Manager  
Walcha Council, PO Box 2  
Walcha NSW 2354

## In Memoriam

**Brian Kenneth Swift  
'Brin'**

5 years gone but never forgotten.

We miss your quiet indoor voice and your beaming smile. That laugh was infectious and you loved hard.

Missing you always and forever.

'Where you go I go, together forever. Amen'  
Your loving wife and daughter

## Public Notices

**DR GENEVIEVE FREER**

Phone 6777 2068 0429 668 583

**The Story of the  
Walcha Show Society  
\$25 at the  
Walcha Newsagency**

**Walcha Squash Club Winter Comp** starts Tuesday 14 June. All interested players call Bill Wake 0488 773 801. AGM to be held 6pm Tuesday 7 June at the Squash Courts.

## Public Notices cont.

**The Barber Shop** – Closed from Friday 10 and re-open Tuesday 14 June.

**Walcha Council  
Debt Recovery Policy  
Public Exhibition  
Until 29 June 2022**



Council at its May 2022 Ordinary Meeting approved updates to the Debt Recovery Policy. This Policy will be on public exhibition on Council's website: <https://www.walcha.nsw.gov.au/news/public-exhibition-of-debt-recovery-policy.aspx> until 5pm Wednesday 29 June 2022. During this time written submissions on the Draft Policy will be received by Council.

Barry Omundson, General Manager  
Walcha Council, PO Box 2  
Walcha NSW 2354

**Church Service at Woolbrook Church**, 2.00pm this Sunday. For info call Graham Barnes 6777 2539.

## For Sale

**Laver pullets.** All breeds. 20 wks. Delivered Friday 17 June. **Phone Jim 0428 194 105.**

**Dog Box/Storage Box** for ute. Excellent condition. Half of the box enclosed, fully sealed and waterproof, 1755 x 795mm. Andrew Blomfield 0428 667 402

## Raffle Results

**Walcha Tennis Association** Wood: Sandra Laurie, Meat Voucher: Dennis Wall, Fruit & Veg: Breanna West.

## Garage Sale

**11 & 12 June – 56n Lagoon Street, 8.00am**  
Households of leftovers. Don't miss a bargain. Lots of clothes.

## Design, print and secretarial services.

- PHOTOCOPYING (UP TO A3)
- LAMINATING (LARGE FORMAT)
- BUSINESS CARDS
- STATIONERY
- PRINTED ENVELOPES
- INVOICE / RECEIPT BOOKS
- SALE CATALOGUES
- FLYERS AND BROCHURES
- RESUMES
- INVITATIONS AND CARDS
- CERTIFICATES
- MENUS
- PROMOTIONAL SIGNAGE/FLAGS
- MAGNETS
- STICKERS AND LABELS

Your local Centrelink, Medicare and Child Support agent  
Hours 9.00am – 12.30pm  
Monday to Friday



**Walcha Telecottage**

Mon/Tues 9.00am – 5.00pm  
Wed/Thurs/Fri 9.00am – 4.30pm

39w Fitzroy Street, Walcha  
Phone 02 6777 1111

[wtc@walchateleccottage.com.au](mailto:wtc@walchateleccottage.com.au)

[www.walchateleccottage.com.au](http://www.walchateleccottage.com.au)

# JUNE LONG WEEKEND Advocate deadline

9.00am Tuesday morning.

If possible advertising preferred by this Friday.



# trade and professions



## Dry & Seasoned Firewood

- Box wood
- Iron Bark
- Blue Gum
- Stringy Bark
- Split or log form
- Strainer posts



For pick-up or delivery

\*Truck & Dog Hire \*Small Tipper Hire

Phone Damian 0418 452 333

## Nick Moore PLUMBING & EXCAVATION SERVICES



Highly qualified and experienced plumber  
All aspects of Plumbing and Gas Fitting  
Wood heater installation  
Roofing and Guttering  
Gold Licence No 59555C

**Nick 0418 691 306**

nickmoore203@yahoo.com.au

Katy 0422 034 660

## STORAGE CENTRE WALCHA

20' Containers available for rent \$30 pw + GST

Secure Undercover parking for cars,  
vans etc \$10 pw + GST

**ANGUS 0427 787 332**

## SELF STORAGE NORTH STREET – WALCHA VARIOUS SIZED SHEDS SECURITY FENCED

**67773899** 0428 653 307

## ELECTRICIAN

**Ian & Cherryl Cameron**

- Installations • Repairs
- Household wiring

**6777 1190** Lic. 46478C

## STACES FAST FREIGHT

Delivering  
Tamworth – Walcha  
**0429 608 409**



## CHIROPRACTOR

**K Samantha Goor**

B.Sc. Anatomy (NSW) M Chiroprac (Macq)

Tuesday & Friday from 9.00am

**6777 1340**



## M L MASSAGE THERAPY

Remedial and Sport Massage

**MADDIE LANCE**

WED & THURS 9AM - 6:30PM

**0432 635 994**

MOBILE  
TREATMENTS  
AVAILABLE

## ENGINEERING

**John Wall**

- Stock floats • Feeders • Sheep & cattle
- yards • Steel framed sheds & mobile welding

**6778 0588 • 0428 778 087**

## MOBILE-FIX AUTO+AIR

Mobile Repairer &  
Airconditioning Specialist

Licensed Vehicle Repairer  
Lic.No.46696 RTA Lic No. AU22616

**PATRICK STACE – WALCHA**

Mob. 0428 780 077 Ph. 6778 0595



**ANGUS  
CRAWFORD  
PLUMBING**

**0407 192 192**

A\_C\_P@outlook.com

Licence. 313605C

## GRAPHIC DESIGN

CORPORATE IDENTITY & LOGO DESIGN  
BRAND GUIDELINES • SIGNS • BOOKS & MAGAZINES  
ANNUAL REPORTS • CATALOGUES • BUSINESS CARDS

**0418 281 489 • OSCARWAUGH@GMAIL.COM**

## CURTIS MOWERS

**Servicing & repairing**  
all types of outdoor power equipment

- \*Mowers & Ride-ons • Chainsaws
- \*Pumps • Brush cutters & more

**JAMES – 0488 020 762**

- Tree lopping
- Tree removal
- Truck & chipper
- Bobcat
- Post hole digger
- Trencher
- Woolshed cleaning
- Stockyard cleaning



**Scott Kermode**

**0427 100 889**

**TREETOP  
services**

treetopservices@bigpond.com

## A G W RURAL CONTRACTING

GPS Equipped boom spraying

**Andrew Wauch 0427 549 748**

## church notices



**ANGLICAN Walcha**

Sunday 12th June 7:30am Holy Communion  
& 10am Family Service. Nowendoc 2pm. All  
welcome. Contact us on 6777 2543 or email  
walchaanglican@gmail.com

**PRESBYTERIAN**

Walcha - Sunday - 9.30am

Woolobrook - Sunday - 2pm

Everybody welcome to join us.

For info call Graham Barnes 6777 2539

**CATHOLIC**

Sunday 10.00am Mass

## Like to advertise on our trade page?

Small ad \$30.00 per week ..... Large ad \$40.00 per week

Once booked you can choose to run your ad weekly, fortnightly, or once a month

**DISCLAIMER:** LETTERS TO THE EDITOR are submitted on the condition that The Walcha Telecottage as the publisher of The Apsley Advocate may edit and has the right to, and license third parties to reproduce in electronic form and communicate these letters.

The Apsley Advocate is printed by The Walcha Telecottage, PO Box 116 Walcha NSW 2354. Phone 6777 1111 Fax 6777 1112.

The Walcha Technology Co Operative Limited, the Editor and Staff of this Newspaper have published any article here-in in good faith and bear no responsibility in respect to the accuracy of the information contained in such article. Any person or persons publishing material in this Newspaper do so in the knowledge that they shall personally accept any responsibility for the accuracy and other correctness of such articles and also accept full responsibility for the legal consequences if it be found that the article contains any inaccuracies in the contents of any such articles.

**DEADLINE MONDAY 4.30PM.**

Editor: Anthea Macpherson. Advertising and Sport: Rosalie Gibson, Megan Scrivener and Sue Jackson.

# Marchant Est. 2000 BROS. PTY. LTD.



A FULL RANGE OF AFFORDABLE TRANSPORT & EARTHMOVING  
**COMMERCIAL WATER CARTING**  
Dam construction/maintenance, stick raking, road building,  
site prep, pipe laying and all timber work.

Check out our website for the full range of machinery,  
attachments and services available



**DELIVERING  
SPLIT  
FIREWOOD**

ORGANIC, LOW SMOKE, HIGH HEAT.  
Beat the climate change, order now

**Earthmoving and Heavy Haulage Transport**  
**Jason 0427 490 487**

02 6777 2024 marchantbros@bigpond.com  
www.marchantbros.com.au

## WALCHA BOWLING & RECREATION CLUB

'TROY  
LESTRANDE'  
FUND RAISER

18th June  
*'Lane Pittman'*  
playing from 7.30pm

### Thursday 9 June

9.00am for 9.30am – Ladies Bowls  
1.00pm Social Bowls – all welcome

### Friday 10 June

2.00pm BINGO  
**CHILDREN'S MOVIES ON  
BIG SCREEN**

6.00pm Bistro – Menu:

Beer Battered Basa  
Honey Soy Meatball Stir Fry  
Chicken Cosmopolitan

7.00pm Fruit and Veg raffles  
followed by Members Draw

### Saturday 11 June

6.00pm Bistro  
9.30am JOHN OXLEY TRIPLES  
BOWLS CARNIVAL (Sat & Sun)

### Sunday 12 June

12.00pm Bistro open  
1.00pm Meat, fruit & veg raffles

### Monday 13 June

9.30am MIXED PAIRS CARNIVAL

## TOM'S

COLOURFUL COCKTAIL  
OF THE WEEK

*Green Grasshopper  
& Blue Lagoon*



**MEMBERS  
DRAW  
\$700**

YOU MUST BE A MEMBER  
FOR 2021/2022 TO BE  
ELIGIBLE TO WIN

Monday to Wednesday 4.00pm to close  
Thursday 12 midday to close  
Friday 2.00pm to close  
Saturday and Sunday 11am to close  
**Phone 6777 2077**

Do you live in Walcha Shire?  
If so you **MUST** be a member  
to enter the Club.  
Social Membership ..... \$15  
Full Membership ..... \$105

FOR ALL YOUR EARTHWORKS TRANSPORT AND ELECTRICAL NEEDS



Freight & Transport

Machinery Float

Road building and maintenance

Dam maintenance and construction

Firebreaks • Drilling • Trenching • Stick Raking

Mulching • Fence Clearing • General Earthworks

Erosion Control • Site Preparation

Electrical • Pipe Laying

10ft Slashing

Ian Notley 04188 29188

Mark Notley 0422 637 686

Office 02 6777 6595



ALL ASPECTS OF RURAL,  
COMMERCIAL & CIVIL WORKS  
www.eteservices.com.au

## LINMAC ENGINEERING

**IF YOU NEED IT**  
*- We make it!*

**CUSTOM TRAYS  
& TIPPERS**



**HUSQVARNA  
DEALER**

**PURCHASE  
A CHAINSAW**

in the months of  
June, July & August  
for a chance to

**WIN A CHAINSAW  
ACCESSORIES  
PACK**

- Customer consultations to make sure we build to YOUR individual specifications
- Sandblasted and powdercoated
- Toolboxes, timber floors, tipper trays, water tanks ... whatever you need!



Facebook page: Linmac Engineering Walcha

211N Pakington Street WALCHA  
Phone 6777 2822 Email linmac1@nsw.chariot.net.au