

# THE APSLEY Advocate

CIRCULATION 1810 P 02 6777 1111 F 02 6777 1112 wtc@walchatelecottage.com.au walchatelecottage.com.au

16 March 2022



- Property Sales & Consultancy
- Real Estate, Stock & Station and Business Agent
- Registered Valuer for 20 yrs
- Rural & Lifestyle Property Specialist
- Obligation free appraisals



Ben Green | 0412 100 681  
ben.green@yieldproperty.com.au  
www.yieldproperty.com.au



Anna Barwick scooped the pool at the NSW Women of the Year Awards last week. Not only was Anna named NSW Minerals Council Regional Woman of the Year, but also the overall award for NSW Premier's Woman of the Year.

"The Walcha community already knows how amazing Anna is, and I know the community is thrilled that her great work has been recognised with these awards,"

Member for Tamworth, Kevin Anderson said.

"Anna is a true community champion, ensuring women from our region and the rest of rural and regional Australia have the support they need when it comes to accessing pharmacy services."

A huge congratulations to Anna who is pictured above receiving her awards from NSW Minister for Women, the Hon. Bronnie Taylor. Photo: Women NSW

## Three huge days of golf in Walcha

By AJ Cross

Walcha Golf Club will host the 83rd New England District Tournament here on our course over the next three days 16th, 17th and 18th March where 84 players from the New England and North West have nominated to compete.

Today, the Colleen Cross Memorial Trophy is up for grabs awarded to the player who cards the best stroke round on the opening day.

The prize is given in memory of a player who won the Walcha Ladies Club Championships 17 times and competed in this tournament on many occasions winning the inaugural Heather Cougan Jug presented to the first N.E.D.G.A Champion of Champions in 1979.

In conjunction, today, players will be competing for the Mary White Cup awarded to the New England Club with the best four nett scores on opening day, and as the host club has 24 players participating they should be in with a chance.

Tomorrow there will be three opens played in Division 1, 2 and 3 (open to all players) along with the N.E.D.G.A champion of champions where champions from the club affiliated with the N.E.D.G.A are eligible to compete in a closed competition.

Walcha Club Champion Chery McDonald, who won the Champion of Champions in 2017 at Armidale and 2020 at Guyra has once again nominated for the event.

A dinner and presentation evening will be held on Thursday 6:30 for 7pm start, followed by the N.E.D.G.A Open Foursomes in both Division 1 and 2 on Friday. Best of luck to all competitors.



THE  
NEWBIRDS  
BOUTIQUE

NEW  
Winter  
ARRIVALS

Milson  
Kip & Co Pyjamas  
Mavi – the Alexa is back!  
Reality Sunglasses  
Emu Australia Shoes  
Hinako Boots  
Walnut Melbourne  
Tigerlily ... and more!

Come in.  
TAKE A LOOK!

FITZROY STREET. PH 6777 2002



ORDER YOUR SEED  
& FERTILISER NOW

- Oats (Nile & Bimbil) • Ryegrass
- Permanent pasture mixes

WVS  
WALCHA VETERINARY SUPPLIES

6 Aberaldie Road Walcha.  
Ph 6777 2588. www.wvs.com.au

Promotion from 1.12.21 to 31/05/22



# OK EARTHMOVING

## Specialising in road construction & maintenance

• Stickraking • Dam building • Erosion works



Bulldozers • Excavator • Tip-truck • Vibrating Roller

**PH 6777 7430 FAX 6777 7448**

**PETER O'KEEFE: 0429 944 821**

## around the traps



By BRUCE RUTHERFORD

The weather has settled down a little this week with the rain moving away from the coast. I am sure a few fine days in the east this week have been more than welcome. The big task now is getting north eastern NSW and south eastern QLD communities back on their feet in the aftermath of the floods. The water may have receded in most places, but the scars on those affected will never go away as lives have been changed forever. The magnitude of this recent rainfall event and the carnage that has been caused by these floods is beyond comprehension. I don't think we can even begin to imagine the extent of loss or simply how much people's lives have been turned upside down. We can only do as much as we can to offer support and hope that an event such as this does not happen again. When I see the images of the damage to property, I think it must be so hard just trying to figure out where to start to get things back in some sort of order. Despite all the calls for governments to help, it will be the community pulling together and helping their own that comes out stronger and more resilient. How often have we seen that happen?



*Milo's HIGHLY COMMENDED cake in the hotly contested Men's cake section. Look at that smile!!*

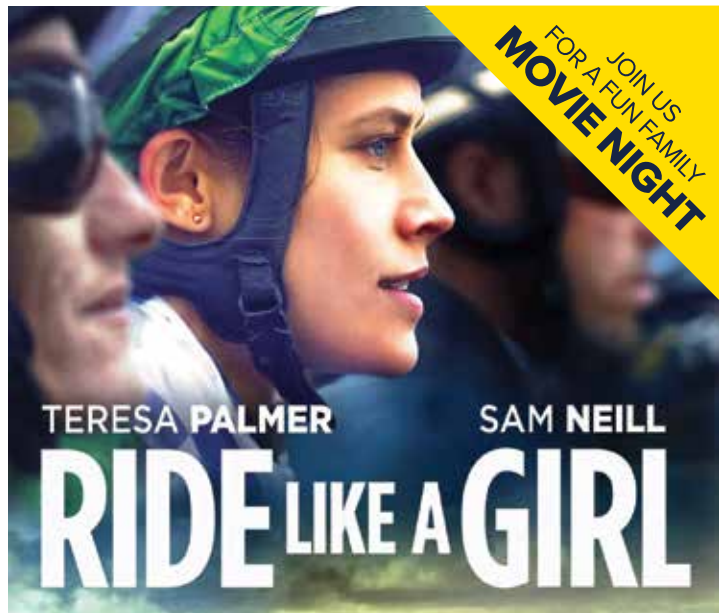
How good was the Walcha Show on the weekend? Firstly, the weather came good which is always essential to a good community event. Friday seemed a bit quiet from a spectator point of view but there appeared to be plenty of contestants in events and pavilions were busy. Saturday was huge from all accounts and the entertainment just kept coming. The Walcha Show committee has once again demonstrated how to do it, and hats off to them for their efforts once again.

With Russia pressing on in their blatant, boots and all attack on Ukraine and the rest of the world watching on in horror, it is difficult to predict where we will be in a months time or six months time and so on. I find it very difficult to watch news footage of the carnage and can't believe that the rest of the world can just let this maniac Putin do this. The fact is they are, and the world community will be a much more vulnerable place if he is allowed to complete this takeover of another sovereign country without resistance or consequence. Other countries are all terrified to step in because it may start something bigger. I get that, and certainly don't want that outcome either, but sanctions will not hurt the likes of Putin. He has robbed the Russian people blind for years and sanctions will only hurt the Russian people who we are led to believe don't want this war either. They too are expendable in Putin's world.

One thing this conflict is doing as western sanctions on Russia bite is putting pressure on energy supplies around the globe. Fuel prices have skyrocketed to places we have never seen and we are told there is more to go. Diesel prices seem to rise with every delivery to service stations and 250 c/ltr is not far off. It gave me a fright last week filling the utility at 201 c/ltr! As we all know there is so much swinging on the price of fuel and energy generally. Freight will get much dearer, prices will rise and there may be some financial shock from that. I have to say I am not sure what strength of sleeping pills the board of the Reserve Bank are all taking, but to tell us inflation is running at around 3% seems a little off the mark given the rise in prices we have seen for just about every farm input. From fuel to fertiliser and then steel, prices have risen by 30 or 40 percent this last year. Sure, commodity prices have risen to counter these rises, but there is plenty of gouging going on if inflation is truly only 3%.

Commodity prices around the globe have spiked on the back of this war. Russia is a huge player in oil and gas supplies in Europe, but also fertiliser and is also a huge wheat grower in its own right. Since this conflict began about four weeks ago we have seen grain prices for just about all grains increase significantly as the northern hemisphere moves to secure protein supplies. It must be a good thing for Australian grain growers in the short term, but it would be much better to take less for the grain and have world peace in my view.

As you can see, it is hard to think about a lot less at the moment!



TERESA PALMER

SAM NEILL

## RIDE LIKE A GIRL

**SATURDAY 26 MARCH**  
**YARROWITCH HALL**

**BBQ 6.00pm. Movie 7.30pm.**  
**Cost \$10.00 per family for movie**

Steak/sausage sandwiches and cold drinks for sale. For catering purposes, please contact Louise Clarke on **0428 695 184**.

Bring along a fold-up chair or picnic rug, warm clothes – *it might get chilly* – and a plate of supper to share.



# Mental Health services now in Walcha

Two psychologists have joined the Walcha General Practice team to provide mental health services to the community. People with mental health issues no longer have to travel long distances for treatment. James Reilly and Anna



Thew, both registered psychologists, who come with a combined 50 years of psychology experience, are now available to help the community, and provide both face to face and telehealth services.

James Reilly has been a psychologist for 40 years and has been working in the New England North West region since 1999. He has expertise in treating a wide range of mental health issues including relationship counselling. Mr Reilly said 'there has been an increase in anxiety and depression in recent years. People are now more aware of the impact of mental health on their lives, and are actively seeking professional help.'

Anna Thew, a Clinical Psychologist,



in our region. Anna utilises a person-centred approach to treat a broad range of mental health issues including (but not limited to) anxiety, depression, other mood disorders, trauma, eating disorders and risks to self and others. Anna said "we feel privileged to be able to work in the Walcha community and are pleased to be able to provide a range of mental health services to people locally."

To book an appointment, please see your GP and ask for a Mental Health Care Plan as, in some cases, the fee for service could be covered by Medicare. Then contact the Walcha General Practice and book an appointment with either Anna Thew or James Reilly.

completed her masters of clinical psychology at UNE and has been working for NSW Health for the past eight years with individuals and families experiencing mental illness

## Join in the fun

From Jane Morrison

Visit Walcha's Historical Pioneer Cottage and Museum complex and help us celebrate 60 years of the Walcha & District Historical Society Inc. We aim to conserve and preserve memorabilia from Walcha's settlement.

Come along to our Open Days, 2nd, 23rd and 30th April, see a range of Vintage and Classic cars and motorcycles. Explore the machinery barn and wonder at the machinery used in the past. So many "cordless" tools on display in the tool room. Imagine flying in the Tiger Moth Aeroplane housed in its own special Hangar. Wander around the grounds and marvel at the steam engine, horse drawn cart and road building implements. Smell the grease from the wool in the Wool Hall.

Try to envisage raising a family in the Cottage built in 1862 by Walcha's first policeman. Take a little time to remember our brave soldiers as you appreciate the collection in the war room. Be thankful for modern medicine when you look at the instruments used in years gone by. So much to see in our Museum. Then take a rest and enjoy a delicious Devonshire Tea in the shade of an elm tree.

Learn about our history and your connections to Walcha at the Family History Centre, Walcha Library talks from 5pm. On the 6th April Bob Walsh will speak about some of the tales in his "Walcha Stories" book. On the 20th April learn about some of our Pioneering Families and have a discussion with Vic Galvin and maybe find out about your family.

On the 9th April from 2pm enjoy our fabulous HIGH TEA and garment display. All costumes on display were owned by Walcha families.

A month's worth of events for 60 years of service.

**Nutrien**  
Boulton's

**Stock and Property Watch**

[www.nutrienharcourts.com.au](http://www.nutrienharcourts.com.au)

# Call for listings

## Are you thinking of selling?

- *There has never been more interest in residential real estate in Walcha as now*
- *Our team are fielding calls daily from qualified buyers looking to move to our small piece of paradise*
- *For an appraisal on your asset call us today.*

**To list your property please call:**

Peta Carter	0407 350 781	Residential
Bruce Rutherford	0428 660 328	Grazing and small properties



3n Derby Street Walcha. Phone 6777 2044

# MJG Earthmoving

Servicing Walcha and Surrounding Areas  
**MATT GARSIDE - 0429 647 738**



## 22 TONNE EXCAVATOR

- Dam Construction
- Dam Expansion and Cleaning
- Fence Line Clearing
- Timber Removal and Stacking
- Cattle/Sheep Yard Pads
- Horse Arena Pads
- Shed Site Preparation
- On Farm Gravel Pits
- Contour Banks and Erosion Control
- River/Creek Crossing Renewal and Culvert Pipe placement

## 6 TONNE SKID-STEER

- Strainer Post Driving, Steel and Timber
- Fence line Removal
- Stick Raking
- Small Scale Trenching and Pipe Laying
- General Earthworks



45ft flat top • 45ft single deck cattle float • 26mtr B Double  
19mtr mini B Double • Low Loader available for hire



**BRIAN**  
*Smith*  
**TIMBER  
TRANSPORT**

Call us for  
your large  
Transport  
needs

**WALCHA**  
**02 67772126**

**Bonnie Smith 0429 772 077**  
**Brian Smith 0427 780 216**

## letters to the editor



### Yarrowitch Hall revamp thanks to grant

The Yarrowitch Community Group was successful in obtaining a grant of \$20,000 for the Yarrowitch Hall from the Stronger Communities Program with the support of Barnaby Joyce.

The Yarrowitch Community group will use the grant to install wheel chair access and paint the hall. This work will help build a community hub in Yarrowitch. The Yarrowitch Community Group is hosting a film night on 26th March and will host the Small Halls concert on 5th June.

**Louise Clarke**

### Simply sensational Show

What a wonderful Walcha Show! Huge thanks and congratulations to all responsible. There was activity and interest to suit young and old. The standard of entries in the pavilion was superb and the horticultural pavilion was a sensory and visual delight. Everything was of such a high standard and appeared to run like clockwork, commented on by talented and humorous announcers.



One of the features of the Walcha Show is the inclusion and encouragement of youth. From the saucers of flowers to the junior stock judging and so much else. Our youth are the future of the show and are being included and encouraged in such a positive way.

Action of all sorts was constant and even when the Walcha cold arrived in the evenings there were still hundreds of people there watching the cattle dog trials, the shearing and the wonderful circus.

How lucky are we to have such top rate organisers and a huge supportive committee to pull it all together and give our little community two wonderful days of sheer enjoyment.

**Carol Laurie**

### Veterans and Ex-Servicemen and Women of Walcha

We are asking that any Veterans and Ex-Servicemen living in the Walcha area to make contact with the Walcha RSL Sub-Branch.

RSL NSW stands for the interests of veterans and their families, advocating on their behalf with government to maximise veteran wellness, support, and suicide prevention.

Currently, we have a small number of members but are looking into the community to ensure all Veterans and Ex-Servicemen have access to the services we can access.

There is no pressure to join the sub-branch, although increased numbers would help ensure we can continue to operate. Similarly, we can welcome family members of veterans as affiliate members or anyone who may be able to assist with fundraising to join the ranks of our Auxiliary.

**We can be contacted through:**

**Email: WalchaSB@rslnsw.org.au**

**Phone: 0402019192**

**Facebook: Walcha RSL sub-Branch**

We meet on the last Thursday of every month, 5.30pm at Walcha Bowling Club.

**Adam Hall, President**  
**Walcha RSL sub-Branch**





# 2022 Showgirls

From Pip Monie

Congratulations to Amy Kermode (Senior entrant) and Amber Macpherson (junior entrant) who were the winners of the Showgirl competition which was held over the weekend at the Walcha Show.

Thank you to our judges Janelle Archdale, Clem O'Gorman and Jenny Millner who were impressed with the maturity and overall presentation of both girls.

Amy and Amber both displayed a great knowledge of the issues facing rural NSW and are both very involved within our community. They commented that they are both young women with purpose and ambition and are great ambassadors for Walcha.

Walcha will host the Zone Finals for the Showgirl competition next February.



Reigning Showgirl, Katrina Campbell with Showgirl Co-ordinator Pip Monie, 2022 Walcha Showgirl Amy Kermode and 2022 Junior Showgirl Amber Macpherson.

- 👉 Shelley of New Birds, models and helpers for a wonderful fashion parade at the Show on Saturday. Very well organised.
- 👉 Walcha Show Committee for their enthusiasm and enormous amount of work to make the 2022 Show such a success.
- 👉 James Tickle for organising and running a fantastic motor bike competition at the Show. Also to Sally Munday and Ian Kerr for their assistance.
- 👉 Congratulations to Martin Oppenheimer and all who made the Show a wonderful success.
- 👉 Chloe Hoy from Walcha General Practice for her amazing efficiency and cheerfulness in all aspects of assisting patients.
- 👉 To all the Walcha Central teachers who give 110% – we appreciate how much you care for our kids!
- 👉 To our wholesome Walcha Show! Thanks to all the volunteers and people who put on such an awesome community event every year.
- 👉 To those smoking in amongst families at the Show.
- 👉 Our dedicated cleaners do a wonderful job for us. Far too often they have to remove graffiti and repair damage in the much admired ladies' toilets at McHattan Park. Is it that difficult to install CCTV lights there?
- 👉 How long more will we have to look ugly orange barriers closing off the beautiful crocodile bridge?

**Contributions will be received in person, by phone or email and must include your name and contact details. They will be printed at the discretion of the editor.**

**Pitt Son's** REAL ESTATE & LIVESTOCK

SAM PAYNE 0428 667 404 | ANDREW BLOMFIELD 0428 667 402

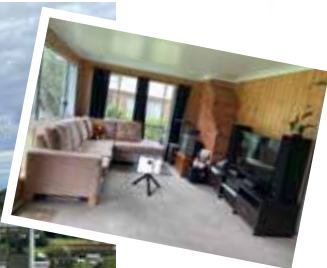
RON VINCENT 0427 775 821 | TROY DAVEY 0427 157 557

FOR LATEST  
UPDATES



6777 2000 | [www.pittsons.com.au](http://www.pittsons.com.au)

*Great views over town*



- Well presented three bedroom home
- Great location high in the township
- Main bedroom upstairs with ensuite
- Lovely fully refurbished kitchen with inbuilt oven and dishwasher
- Lounge room with wood heater.

**\$350,000**



**Pitt Son's  
Online Auction**

**Commencing  
THURSDAY 31 MARCH  
Finishes**

**TUESDAY 4TH APRIL at 6pm**

A LARGE LIST OF ITEMS ON OFFER

**FURTHER ENTRIES  
INVITED**

Catalogue will be available to view at  
AuctionsPlus or Pitt Son's web site.

# With lots of juggling ... It was a cracking Show

## From Martin Oppenheimer

The weeks before the 2022 Walcha Show were wet, but the weather improved to be almost perfect. It was a successful Show and people were happy.

The Show committee and volunteers worked hard to present one of the best country Shows in NSW. New and improved competitions, plus entertainment such as the Circus brought big crowds, particularly on Saturday.

Walcha Show President Martin Oppenheimer said "Conditions were far from perfect on the Monday before the Show yet most visitors could not tell the difference by Friday. Our team had to work extra hard this year to prepare the grounds."

"Owing to a combination of factors such as floods, fuel prices, shortages of staff and stock, a few Trade exhibitors pulled out in the week leading up to the Show."

"Entry numbers in the Horse and Cattle sections were also down slightly on last year for similar reasons. Some simply could not get trucks into their properties."

"Entries in the Motorbike, Cattle Dog and Yard dogs, Shearing, Merino and Meat Sheep, however, were up. Spectator numbers at the motorbikes, shearing and Fashion Parade were

huge. The Pavilion entries and displays were outstanding."

"It was a wonderful Show, thanks to our community and sponsors especially."

"We had a significant increase in membership and a successful event puts the Show Society in a sound financial position to invest in better equipment and future Shows."

Congratulations to Amy Kermode, Walcha Showgirl for 2022 and Amber Macpherson, Junior Showgirl. Thanks to Anna Barwick, NSW Premier's Woman of the Year for sashing the Showgirls. Michael Millner, President of the Royal Agricultural Society of NSW opened the Show on Saturday.

Martin Oppenheimer thanked the Australian Government's National Recovery and Resilience Agency for sponsoring the Walcha Show and having a display stand. He also acknowledged the NSW Government for a grant of \$36,000 under the 2022 Country Shows Support Package.

"Thanks again to our wonderful Committee and volunteers. If anyone wants to be part of a dynamic and fun organisation please join the Walcha Show Society. It is a good feeling to be part of a proud community."



## KENTUCKY | NSW



**AUCTION**



Land Size - 1,460 ha | 3,608 ac



4 2

## Prime New England Grazing - "Rimbanda"

- High rainfall country with quality soils for agricultural excellence.
- Water is a feature with close to 40 dams, 4 named creeks running through the property along with water license drawn from a feature dam.
- Proven track record as a powerhouse in the wool industry back in years gone by, now a powerhouse in the cattle industry with pasture improvements.
- Heavy carrying capacity owner estimate 600 C & C's. Weaning at a heavy weight.
- Ideally situated half way between the city of Tamworth and Armidale with New England Highway frontage.
- Information Memorandum can be emailed by request.

### AUCTION - 5th April 2022

Address: "Rimbanda"  
New England Highway, Kentucky NSW

Contact: Simon Burke 0427 634 341  
sburke@dcco.com.au

Auction: Tuesday 5th April 2022 at the  
Best Western Sanctuary Inn Tamworth





# "MIRAMOONA SOUTH"

A VERY RARE OFFERING IN A TIGHTLY HELD DISTRICT



A MAGNIFICENT PROPERTY  
WITH MANY  
EXCELLENT FEATURES

## AUCTION

THURSDAY 28 APRIL

WALCHA VET SUPPLIES AT 11AM

### OUTSTANDING FATTENING & BREEDING COUNTRY



**789.27 ha / 1950 ac**

**One family ownership for a century**

- ◆ Outstanding location between Walcha and Uralla on Thunderbolts Way
- ◆ Very attractive, gently undulating country, quality loamy traprock soils
- ◆ Water a feature – three bores, reticulated water to all paddocks
- ◆ Excellent working infrastructure for sheep and cattle enterprises
- ◆ Two cottages centrally located with easy access



INSPECTIONS STRICTLY BY APPOINTMENT

**Nutrien**  
Boulton's

**Bruce Rutherford 0428 660 328**

3n Derby Street Walcha. 6777 2044

[www.nutrienharcourts.com.au](http://www.nutrienharcourts.com.au)

March 2022

## Overview

Thunderbolt Energy Hub Stage 1 is a 192MW wind farm with the ability to provide affordable, reliable power to New South Wales consumers. The project is proposed near Kentucky, approximately 47km north-east of Tamworth.

### Project benefits – Stage 1



The project is predicted to produce enough renewable energy to power approximately **118,000 New South Wales homes**.



The project represents approximately **\$373 million investment in infrastructure**.



During construction the project would create over **190 direct jobs**, with **9 direct jobs during operations** (25-30 years).



**32 wind turbine** generators.

## DA Submission for Stage 1 & Public Exhibiton

Neoen have submitted the Environmental Impact Statement (EIS) to the NSW Government as part of its Development Application (DA) for Stage 1 of the Project. The Project will go onto public exhibition in the coming weeks.

Community members are invited to view and/or download the EIS documents on the NSW Planning portal:



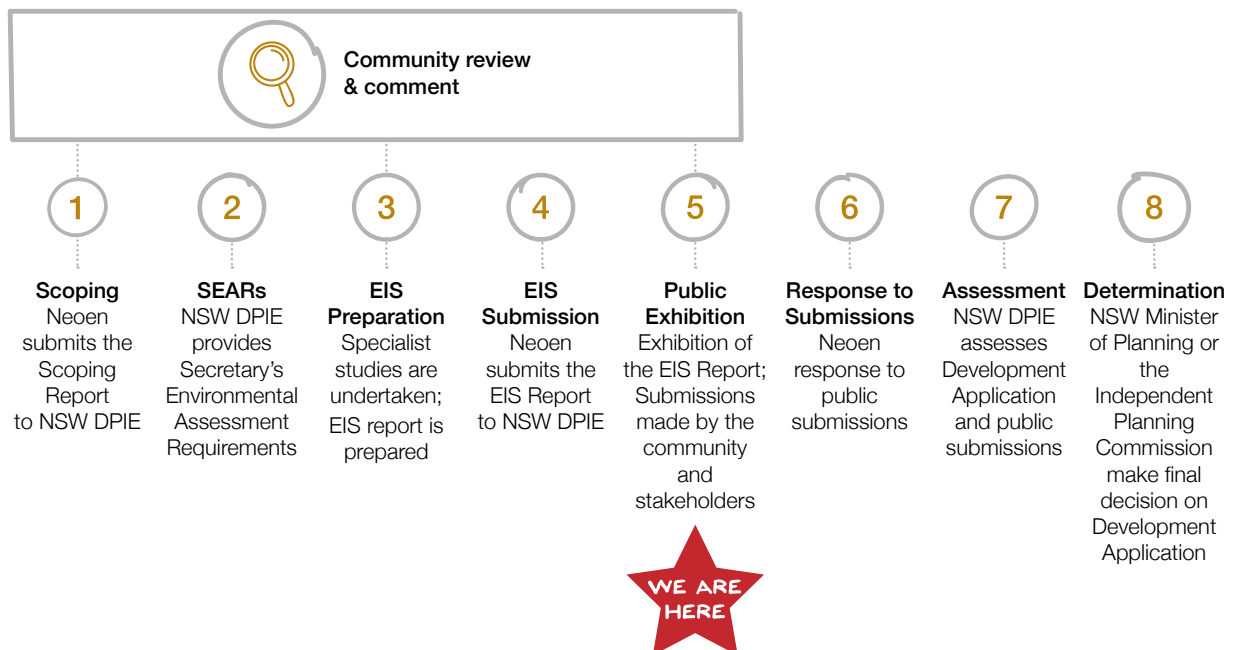
[planningportal.nsw.gov.au/  
major-projects/project/40551](https://planningportal.nsw.gov.au/major-projects/project/40551)

If you would like to receive a copy of the EIS documents on a USB drive, please contact:

Anne-Marie Ward  
[annemarie.ward.ext@neoen.com](mailto:annemarie.ward.ext@neoen.com)

or Joanna  
[joanna.murphy@neoen.com](mailto:joanna.murphy@neoen.com)

USBs will also be available at the local Councils for community members to take with them.





If you would like to make a public submission in response to the Project, you may do so during the public exhibition phase. To learn how to make a public submission, please refer to the below link:



[planningportal.nsw.gov.au/  
major-projects/have-your-say](https://planningportal.nsw.gov.au/major-projects/have-your-say)

Submissions can be made online or by sending a letter to the NSW Department of Planning, Industry and Environment. The Project's application number is **SSD-10807896**.

If you are unsure how to make a submission, please contact us for further clarification.



## CCC Meeting

The third Community Consultative Committee (CCC) meeting was held on 21 February 2022. Project updates were provided, including outcomes of some specialist studies. The Executive Director for Planning & Communities from the Energy Corporation of NSW (Department of Planning and Environment) also provided a presentation on the Renewable Energy Zone (REZ) process.

Meeting minutes and a copy of the presentation will be made available on the Thunderbolt website shortly:

[thunderboltenergyhub.com.au/  
community-consultative-committee-2/](https://thunderboltenergyhub.com.au/community-consultative-committee-2/)

## Neoen Learning Hub Launch

We have recently developed the Learning Hub, an educational resource for local schools, as part of our community engagement.

The Learning Hub is a stand-alone website with materials for Years 5-6 and another for Years 7-8, both centred around electricity and renewable energy.

Developed by an experienced science curriculum writer, each module contains 3 topics each with a video, interactive activities and lesson plans.

We hope you find them useful and that your students enjoy them!



## Jobs and Supplier Interest

If you are interested in learning what types of jobs and suppliers are typically required throughout construction and operations, or you wish to register your interest, please visit the Work With Us page on the Thunderbolt website:

[thunderboltenergyhub.com.au/  
work-with-us/](https://thunderboltenergyhub.com.au/work-with-us/)

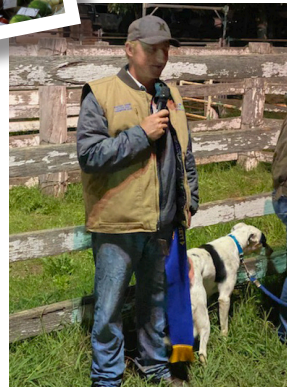
✉ [contact@thunderboltenergyhub.com.au](mailto:contact@thunderboltenergyhub.com.au)

☎ 1800 966 207

🔍 [thunderboltenergyhub.com.au](https://thunderboltenergyhub.com.au)



# WALCHA SHOW 2022





# WALCHA SHOW RESULTS

## Live Lamb Competition

**Trade Lamb (shorn)** 1st Norton Jones, 2nd Norton Jones, 3rd RS & PM King. **(Woolly)** 1st Branga Plains, 2nd Norton Jones, 3rd KR & SM Green. **Export Lamb (shorn)** 1st Phoenix Partnership, 2nd Norton Jones, 3rd Norton Jones. **(Woolly)** 1st Norton Jones, 2nd RS & PM King, 3rd Branga Plains. **Champion Lamb of the Show** Phoenix Partnership Tag #493. **Most Successful Exhibitor** Norton Jones

## Meat Sheep

**GC Junior Ram** Abelene Park (W. Suffolk)  
**GC Junior Ewe** Bensons (Wh Dorper)  
**GC Senior Ram** Clermont (Wh Suffolk)  
**GC Senior Ewe** Peel High School (suffolk)  
**Pair of Rams** Abelene Poll Dorsets  
**Pair of Ewes** Peel High School  
**Encouragement** Angela Robinson (PHS)  
**Supreme Group** Peel High School  
**Supreme Ch Ewe** Bensons (Wh. Dorpers)  
**Supreme Ch Ram** Abelene Poll Dorsets  
**Sheep of the Show** Abelene Poll Dorsets  
**Most Successful** Bensons

## Junior Judging

**Merino** 1st Bateson Pittman, 2nd Erica Menzies, 3rd Angela Ryan. **Meat sheep** 1st Bateson Pittman, 2nd Brook Grills, 3rd Amelia Fiechtner. **Cattle** 1st Meg Kealey, 2nd Ali Kealey, 3rd Zoe Rudder

## Guess the Weight Competition

**Steer Act. Wght 426kg** 1st Dale Webber, 2nd Troy Davey. **Sheep (combined) Act. Wght 126kg** 1st Daniel Kermode, 2nd Norm Miller.

## Cattle: Junior Heifer & Steer Show

**Jnr Champion Heifer** Ben Nevis Jean, **Reserve** Chilcotts Creek Petunis S012. **Senior Champion Heifer** Southcote Jupiter, **Reserve** Kamilaroi Leisl R26. **Grand Champion Heifer** Ben Nevis Jean. **Grand Champion Steer** Calrossy Espresso, **Reserve** Calrossy Coffee

## Junior Judging

**Under 11** Albert Green. **12 Years** Amelia Miller  
**13 Years** Reese Spencer Ruddy, **14 Years** Kieran Watts. **15 Years** Yassie Jones. **16 Years**

Zoe Rudder. **17/18 Years** Sophie Worth. **Grand Champion** Zoe Rudder.

## Saturday Stud

**Simmentals: Grand Champion Heifer** Logie Simmentals Ruby R002. **Grand Champion Bull** BAL Shots of Sambucca. **Shorthorns: G Champion Heifer** Southcote Jupiter R45. **G Champion Bull** Kamilaroi Touchstone R03. **Lincoln Red: Gr Champion Heifer** Antrim Lilly 9. **Red Poll: Gr Champion Heifer** Glenleigh Trixi, **Gr Champion Bull** Lagoon Once in a While. **Devons: Gr Champion Heifer** NAL Charlotte. **Limousin: Gr Champion Heifer** Clifton Nellie. **Hereford & Poll Hereford: Gr Champion Heifer** Te-Angie Duchess, **Gr Champion Bull** Ivybank Rodger R003. **Speckle Park: Gr Champion Heifer** Deeargee Quilt of Spots, **Gr Champion Bull** Deeargee Smooth Passion. **Angus: Gr Champion Heifer** Ben Nevis Jean, **Gr Champion Bull** Ben Nevis Sultan. **Led Steer: Gr Champion Steers** Calrossy Cino.

## Cattle Trophies

**Cairne Trophy** Ben Nevis Angus. **Nairn Park Trophy** Southcote Shorthorns. **Yalgoo Trophy** Ben Nevis Jean. **Ivybank Trophy** Ivybank Rodger R003. **Ben Nevis Trophy** Deeargee Speckle Park. **Supreme Exhibit** Ben Nevis Jean.



## Visit our Farmers' Market this Saturday

Autumn has arrived, colouring our trees bright gold, deep burgundy and burnt orange. Now is a great time for you to expand your garden with new varieties of shrubs, trees and succulents that you will find at our Farmers' Market.

As you take a stroll through the various market stalls, try the Town & Country Club breakfast BBQ along with a steaming espresso from our coffee wagon – the Float.

Enjoy the exotic, rich, warm tones of the ukulele from the *Ukelarrikans*, as the group entertain us with their debut performance at our Markets. Commencing at 10am, they will bring a joyous atmosphere to McHattan Park.

All our regular stall holders will be in attendance offering fresh seasonal produce, home baked treats, smoked trout, sparkling gin varieties and handmade goods. The Community Stall

will feature vegetable seedlings from the Men's Shed and student garden enthusiast – Sienna, along with her very popular pansies. Don't forget you can bring any homegrown produce, baked goods or condiments to the stall and we will sell them on your behalf.

So enjoy the beginning of Autumn with a visit to the Farmers' Market. Bring along your family and friends and support local producers and artisans. Market open from 8.30am – 12.30pm.



**FARMERS' MARKET THIS SAT!**

*Join us*  
**FOR AN ARRAY OF SEASONAL PRODUCE, FRESH COFFEE, SWEETS & PASTRIES, BACON & EGG ROLLS, PLANTS AND TREES, & MUCH MORE!!**



**NEW STALLHOLDERS WELCOME**  
[WALCHAFARMERSMARKET.ORG.AU](http://WALCHAFARMERSMARKET.ORG.AU)

# What's the Goss

With A.J. CROSS



**Urban works supervisor Stephen John Sweeney** will retire from the Walcha Council tomorrow Thursday 17 March, after 36 years having commenced duties on 20 March 1986. Personally I have worked with the 'Golden Haired Wonder Child' during that time, including on the Bridge Gang and Road Construction in the early days and then Parks and Gardens more recently. Since he was appointed Urban Supervisor quite a few years ago, Steph has always had beautification of our town high on his list and it is a credit to him the way Walcha has been developed to where it is today. Hope you enjoy a long and healthy retirement Stevie and we catch up for a cool drink from time to time.

**This Saturday marks 90 years** since the Sydney Harbour Bridge was opened and one thing Irwin John Cross prided himself on, was that he was nine days younger than the 'Big Coathanger'. Dad would have been 90 on Monday 28 March.

**Congratulations to the nine Walcha Central School students** who have been selected in the North West Primary Schools swim team to compete at the New South Wales PSSA championships at the Sydney Aquatic Centre, Homebush late this month following eye catching trial performances in Armidale recently.

**The only Walcha Primary girl to make this squad** is Hannah Swain who bettered her 11 years, 50 metre Butterfly time by over four seconds to finish third after stopping the clock at 47.25 seconds. Hannah was also a member of the senior girls relay team with Aria, Jess Wellings and Layla Smith when they slashed an amazing 10 seconds off their seed time only to still miss out. Good on ya girls – great effort.

**In his 10 years, 50 metre freestyle** Blaine Cooney sliced over 1<sup>1/2</sup> seconds off his seed time to win the event in 34.54 secs and then a bit later finished runner up in his 50 metre backstroke having stopped the clock at 51.54 seconds. Blaine also swam the anchor leg in the junior boys relay who won their race after Dustin Wellings, Flynn O'Connell and Hudson France got the team off to a great start.

**The third Walcha competitor to qualify individually** is Cameron Mooney after he trimmed his 12 years, 50 metre freestyle time by over a second to finish runner-up in 35.69 secs. Cameron also brought home the Senior Boys Relay into third position after Alex Gunn, Fletcher France and James McLaren provided a solid platform to take nearly 9 seconds off their time.

**One of the hard luck stories on the day** was when James 'Jumbo' McLaren missed out by a touch in his 50 metre backstroke, despite taking over two seconds off his seed time to finish fourth. To qualify for the next level competitors needed to finish in the top three of each event. Well done also to Eliza and Frankie Nivison, Nathan Ross and Simon Wellings who also flew the Walcha Central School flag at the North West trials.

**The Walcha Cricket season has been finalised** and for the first time in living memory there were no individual trophies awarded except for the Grand Final 'Player of the Match' and 'Best Bowling Performance' in the competition decider. A number of factors were involved in the decision including number of washed out games, forfeits and players filling in for other clubs on regular occasions.

**Plenty of players did perform well** throughout the season leading up to the grand final, including Round Swamp allrounder Ben France who made 193 runs to finish on top of the batting aggregate and captured six wickets, third on the wicket taking list.

**Kentucky skipper Daniel Boyd** scored 181 runs to finish runner-up, while Uralla opener Shannon Rafferty and Colts opener Ed Blomfield both amassed 158 runs just ahead of Kentucky veteran Michael Boyd on 153. Most catches were taken by Justin Gibson from Kentucky when he accepted six chances, whereas Cooper Boyd took four for Swamp.

**In the bowling department** Colts teenager Tommy Le Strande snared 18 victims to finish at the top of the aggregate list, just ahead of his team mate Randy Grewal 7, Ben France and his team mate Luke Wellings both on 6, Kentucky's Henry Carlon and Preston Boyd on 5 each.

**Wicketkeeper of the Year** couldn't have been much closer where Uralla gloveman Blaine Moore accumulated 17 pts followed by Kentucky's Bob Jex and Ed Blomfield both on 15 just ahead of evergreen Swampy Barry Hoy 13.

## Local Walcha Quarry OPEN for business.



### Positions Available:

**Register your interest  
with your resume**

- Experienced All rounder operator and labourers
- Trainee position available

At Brooklyn Quarry we can produce:

- A full range of DGB & DGS products to spec,
- Gravels; tailored to your exact requirements
- Gabion rock all sizes,
- Over size rock for specialized jobs and landscaping.

Brooklyn Quarry is working with locals and other businesses across NSW; Supplying products for once off orders, ongoing orders or large specific orders. With prompt delivery to site.

With many years experience in the earth moving and civils industry – we know how to speak your language.

Contact us today to have a conversation with one of our team!

Have a rock solid day!

✉ SCOTT@BROOKLYNQUARRY.COM.AU

☎ 0434 011 570

📍 1643 OXLEY HWY, WALCHA RD. NSW (BY APPOINTMENT ONLY)

🌐 WWW.BROOKLYNQUARRY.COM.AU





## Bowls

Results from the weekend:

**A Grade Singles:** K Goodwin defeated M Wall 31-3, S Goodwin defeated G Clare 31-8. **B Grade Singles:** J Asmus defeated S Bath 31-25. **Pairs Semi Final:** D Bird & K Goodwin defeated G Clare & B Kliendienst 22-21.

**Draw for this Weekend the Fours Championships:**

**Saturday 9:00am start:** If possible could a player from each team grab a jack and some cards Friday night after twilight to have ready to go for the early start.

**Game 1:** M Steep, B, N & A Goodwin v G Natty, M Hamel, S Bath & K Creighton.

**Game 2:** T Parker, F Cameron, M Hoy & G Marshall v F Henry, G Clare, I Bird & D Makeham.

**Saturday 1:00pm Start:** Winner of Game 1 v G Bird, G Carter, S & K Goodwin. Winner of Game 2 v G Michie, A McGuffog, D Bird & R Kerr.

**Sunday 11:00am start:** Final of the Fours championship winners of both Saturday afternoon games.

Also social bowls will be on both days for anyone wishing to have a roll or practice for pennants before we head away the following week.

**Dads Army:** Our afternoon commenced after a "Celebrity" selector picked the teams to play.

Tony Asmus (playing twice) and Eric O'Keefe got off to a good start against Noel Goodwin, Jason Asmus and John McCormack, before defeating them 17 - 9.

In the second game Barry Kliendienst, Mick Bullen and John Watts had a close 15 - 12 win over Brian Goodwin, Peter Hayes and Warwick Hogan.

Barry's team won the "chooks" and Garth Clare won the raffle after Mr "Celebrity" donated it back, as he was a member of winning team.

## Ladies Bowls

Last Thursday was the semi-final game of the Minor Singles in which Jan Cross was far too strong for Veronica. Jan recorded a convincing win and will play the Final this Wednesday 16 March against Sari Andrews, commencing at 11.30 am with June to mark. Good luck to both of you. Also last Thursday Debbie Richards defeated Janice Rizzi in the Major Singles to advance to the next round.

In a social game of three bowl pairs Pat and Carol had an easy win over Wendy and Marg Tickle.

This Thursday there are no championship games only social bowls. Our Monthly Meeting will follow at 1.00pm - all bowlers welcome to attend.

## Wednesday Golf

Again the heavy conditions didn't favour us at golf on Wednesday.

We played a par event for Sheila Faulkner's trophy and again this week our winner was Pauline Carter with -1. Well done Pauline, our wet weather star.

Runner-up was Marg Parsons with -2, and sweepstakes went to Prue Morgan -5, Julie Olrich, Jenny Lisle and Cheryl McDonald all with -6, and the final sweepstakes went to Simone Sweeney with -7, counting out Kerrie Hollis.

The Nearest the Pin on 3 was left high and dry and Prue Morgan was NTP on 16.

This week is our three day NEDGA tournament here at Walcha and the following week is a Graham Betts Stableford qualifier, playing for Lorraine Walshe's trophy.

## At the 19th

Retired Walcha Council general Manager Jack O'Hara blitzed the field last Sunday to win the monthly stroke medal round for a trophy donated by Gary Brennan, when he shot 88 off the stick which equated to 65 nett. It certainly was a big turn around from the previous weekend when he and his 4BBB partner Deon Lawrence could only manage to muster 18 stableford points over 18 holes in the NSW Sandgreen Championships at Dunedoo.

Last Sunday A Grade went to David Sweeney after he carded a 72 nett, which was also his winning score in the annual 'Mug of the Year' play-off, ahead of Willy Brennan 74 and Ladies Champion Cheryl McDonald 76.

Best scratch score was registered by Lee Fletcher, 80 off the beater and he also belted the longest A Grade drive. The remaining long drives, all sponsored by Tony 'Backhanded Larry' Asmus, were caressed by D A Locke (B) and Peter Berry (C).

B Grade was won by Doug McDonald 69, C Grade by the overall winner Jack O'Hara, while sweepstake prizes went to the A and B Grade winners, along with Don Brooks 71 and Crichton Barr 72 on a countback from Andrew Robertson.

Club Secretary Jenny Lisle won the putting competition after engaging her flat stick on just 21 occasions whereas the 'coveted Pink Shirt' for most putts was collected by an evacuated Gavin White after he racked up 35 jabs. Sharpest shooters at the pins were Mark Stackman (3) Doug McDonald (9) and Peter Berry (16) while no player was clever enough to reach the beach on the home hole.

In match play David Sweeney snuck home against Crichton Barr 1 up, President Allan Green downed Jamie Bowden 3 and 2, Jack O'Hara won comfortably 6 and 5 against Col Berry, as did Andrew Robertson over Gavin White by the same score.

Last Saturday Brian Lynch accumulated 20 stableford points to win the weekly 9 Hole Competition from organiser John McCormack on 19 points.

Ladies division winner was Margaret Higgins 18 just ahead of Margaret Parsons 17 whereas the NTP on 3 was taken out by Max Holstein.

This Sunday is the opening round of the 2022 Mens Championships where captain Willy Brennan is in charge of supplying the daily prize.

Reigning Club Champion Andrew 'Buddha' Bowden has indicated he will be defending his title as he attempts to win his fifth championship in succession.

A reminder to all members that their Annual General Meeting is on this Sunday March 20 commencing at 9:30am.

## Gun Club

The March shoot hosted 24 shooters coming from Port Macquarie to Moree and across all grades. The ladies dominated the lower grades - special mention to 14 year old Charlie Ward who shared a win in B Grade. Results as follows:

**Event 1 - 25 Pair Double Rise AA:** Guy Mephram. A: Kerry Miller / Terry Haynes. B: Charlie Ward / Trevor Flaxman / Peter Holmes. C: Craig Rogers.

**Event 2 - 50 Target Double Barrel AA:** Bart Crosby. A: Kevin Bourke. B: Jamie Poole. C: Lesley Langer.

**Event 2 - 50 Target Double Barrel AA:** Bart Crosby. A: Kevin Bourke / Terry Haynes. B: Kerry Young. C: Melissa Crosby

**Overall High Gun Shared by John Lisle and Guy Mephram.**

A big thank you to Danny and Vicki Hoy for their support of the club through donations to our new layout. Winner of the Hoy's Concrete 100 target double barrel was Kevin Bourke with 100/100. All welcome to our next club shoot on Saturday 9 April, commencing at 9.00am.

The Club will also be hosting a 'Come and Try Day' on Sunday 10 April, commencing at 10.00am.

## Tennis

Round 4 of the 2022 Summer Comp to be played on Tuesday 1 March was a washout, as was Primary Junior Tennis Round 2 that was to be played on Monday 7 March. Round 5 of the 2022 Summer Comp was played out under dark skies on Monday 8 March.

Stosur - K Wall, E Wauch, J Gibson and P Palmer defeated Barty - D Sweeney, C Bruce, M Clark and G Wall in a close match 29 to 26.

Kokkinaakas - D A Locke, M Palmer, P Uren and M Dye defeated Gavrilova - T Gough, C Lyon, J Hoy (floating for T Gibson) and L Lockyer 28 to 24.

De Minaur - A Goodwin, K Lisle, A Barillaro and M Luchich defeated Ebdon - H Thomson, N Buckland, E Clifton and R Mathews 29 to 24. Well done everyone.

Thanks to our floater J Hoy and C Lyon who had to play up a division.

Round 3 of the Primary Junior Comp was played on Monday 14 March. Some of the results: Singles: A Fletcher defeated N Powell 11 to 9 and J Lisle defeated L Blomfield 12 to 8. Doubles: A Green and S Wellings defeated M Grayling and E Olrich 10 to 6. Great job juniors, the whole squad is progressing well.

The next Club Meeting will be held on Monday 9 May. See you all at the net soon.



Primary Junior Tennis players. Simon Wellings, Albert Green, Mark Grayling and Ethan Olrich.



## Positions Vacant



### TERRITORY SALES MANAGER Walcha NSW

Permanent Full-time

Closing Date: 8th April 2022

- Competitive salary + opportunity for incentive
- As an integral team member be able to work and learn from some of the best leaders in this industry
- Flexibility + uniform allowance + motor vehicle

#### About the role

Provide clients with expert livestock sales support and insights. Working both in-branch and travelling the countryside in the iconic pink shirt, Territory Sales Managers assess and prepare livestock for market to obtain maximum value for clients.

#### What will I do?

As a key member of the branch, you will enjoy a varied day including:

- Maintaining professional relationships and growing a strong portfolio of new and existing clients
- Identifying and cultivating new livestock sales opportunities
- Developing and growing relationships with key industry partners including exporters and processors
- Providing professional onsite livestock advice to clients, recommending appropriate products and services to strengthen their business
- Employing tactful negotiating skills to bring buyers and sellers together
- Maximising promotional opportunities, including assisting at industry and community events

Elders is integral to rural and regional Australia and as Australia's leading agribusiness, our focus is to help clients find success in their agricultural pursuits, no matter what their business or personal goals may be.

We've been around for 180 years and with our employees stating that they feel proud to work at Elders, why not join us!

#### For more information please contact:

Tom Henry 0409 659 877 or  
thomas.henry@elders.com.au

#### To apply please head to:

<https://elders.applynow.net.au/jobs/ELDERS1968-territory-sales-manager>

## THE FRUIT SHOP

### Store Manager

The Fruit Shop is looking for an amazing new Store Manager to join our team.

#### Tasks and Responsibilities:

- Daily operations
- Stock Management
- Assist in Implementing/Introducing new product lines and projects
- Keep team motivated and on task
- Maintain and improve relationships
- Maintain the highest level of customer service
- Support the local community

#### Experience:

- Proven leadership and team management
- Stock management
- Cash handling and reconciling daily takings
- POS management
- Barista skills preferred
- Hospitality or retail experience preferred

This is a full-time position of a 38 hour week, with above award salary package. The position requires a range of hours, starting from 6am and the latest will be a 5pm finish. Working 1 to 2 Saturdays per month with flexibility will be required. For more information or to apply please email Sophie at:

[thefruitshopwalcha@outlook.com](mailto:thefruitshopwalcha@outlook.com)

## Meetings

**Walcha Junior Indoor Hockey Association** AGM, 6.00pm 22 March 2022. All encouraged and welcome. Please contact Chloe Hoy for further information 0400 389 573 or email [walchajuniorindoorhockey@gmail.com](mailto:walchajuniorindoorhockey@gmail.com)

**Walcha Golf Club AGM** 20 March 9:30am at the Golf Club.

## Thank You

The Tennis Association would like to thank the sponsors of the Seniors Tournament held March 4, 5 & 6th. Walcha Law, Commercial Hotel, Walcha Bowling Club, Mountain Motors, Transwest Fuel, Walcha Post Office, New England Hotel/Motel, McDonald Gas, Pitt Son's and Cafe Graze.

## Lost & Found

**Found** – Wallet left on counter of Lions Club BBQ at the Walcha Show on Saturday. Contact Walcha Telecottage on 6777 1111.

## For Sale

**Layer pullets.** All breeds. 20 wks. Delivered Friday 1 April. Phone Jim 0428 194 105.

## Wanted

**Walcha Lions Club** are collecting eye glasses to be recycled. Please leave at Pitt Sons.

## Public Notices

### DR GENEVIEVE FREER

Phone 6777 2068 0429 668 583

**Bendemeer Art Show** Entry nominations due by Friday 25 March 2022. Email us at: [bendemeerartshow@gmail.com](mailto:bendemeerartshow@gmail.com) or Facebook for more information.

### Niangala Prawn and Chicken Night

You're invited – 7.00pm Saturday 2 April at Niangala Hall. Cost \$50pp BYO  
Please RSVP before Saturday 26 March to:  
[niangalacommunity@outlook.com](mailto:niangalacommunity@outlook.com)  
Gail 0429 692 335

### NATURALLY ANATOMIC REMEDIAL MASSAGE

Tuesdays and Fridays. Phone Brett Dwyer  
0414 349 625 for appointments

## Walcha Show 2022

~ Percheron Mare ~  
Exhibited by Genevieve Freer

SECOND  
HUNTER HACK OVER 16h.h



*Congratulations to the  
organising committee,  
Judges and Stewards  
on a great show.*



# trade and professions



Tree lopping  
Tree removal  
Truck & chipper  
Bobcat  
Post hole digger  
Trencher  
Woolshed cleaning  
Stockyard cleaning



**Scott Kermode**  
**0427 100 889**

treetopservices@bigpond.com

## STORAGE CENTRE WALCHA

20' Containers available for rent \$30 pw + GST

Secure Undercover parking for cars,  
vans etc \$10 pw + GST

**ANGUS 0427 787 332**

## SELF STORAGE

NORTH STREET – WALCHA

**VARIOUS SIZED SHEDS**

**SECURITY FENCED**

**67773899** 0428 653 307

## church notices



**ANGLICAN** Sundays 7:30am & 10am  
All welcome. COVID restrictions apply.  
Contact us on 6777 2543 or email  
walchaanglican@gmail.com.

**PRESBYTERIAN** 9.30am Service.  
Everybody welcome to join us.

**CATHOLIC** Sunday 10am Service with  
conditions.

**DISCLAIMER** LETTERS TO THE EDITOR  
are submitted on the condition that The Walcha  
Telecottage as the publisher of The Apsley Advocate  
may edit and has the right to, and license third parties  
to reproduce in electronic form and communicate  
these letters. The Apsley Advocate is printed by  
The Walcha Telecottage, PO Box 116 Walcha NSW  
2354. Phone 6777 1111 Fax 6777 1112. The Walcha  
Technology Co Operative Limited, the Editor and Staff  
of this Newspaper have published any article here-  
in in good faith and bear no responsibility in respect  
to the accuracy of the information contained in such  
article. Any person or persons publishing material in  
this Newspaper do so in the knowledge that they shall  
personally accept any responsibility for the accuracy  
and other correctness of such articles and also accept  
full responsibility for the legal consequences if it be  
found that the article contains any inaccuracies in the  
contents of any such articles. **DEADLINE MONDAY**  
**4.30PM.** Editor: Anthea Macpherson. Advertising and  
Sport: Rosalie Gibson, Megan Scrivener and Sue  
Jackson.

## Nick Moore PLUMBING & EXCAVATION SERVICES



Highly qualified and  
experienced plumber  
All aspects of Plumbing  
and Gas Fitting  
Wood heater installation  
Roofing and Guttering  
Gold Licence No 59555C

**Nick 0418 691 306**

nickmoore203@yahoo.com.au

Katy 0422 034 660

## New England IT

## ONSITE COMPUTER SERVICE + SALES

**Tim Sutton 0414 874 523**

## GRAPHIC DESIGN

**CORPORATE IDENTITY & LOGO DESIGN**  
BRAND GUIDELINES · SIGNS · BOOKS & MAGAZINES  
ANNUAL REPORTS · CATALOGUES · BUSINESS CARDS

**0418 281 489 · OSCARWAUGH@GMAIL.COM**

## ELECTRICIAN WALCHA

**LICENSED CONTRACTOR SINCE 1990**

"Not just that air conditioning guy"

**Residential & Commercial work**

**Dave 0438 007 275**

SPLITZAIR (NSW) Pty Ltd 182154c

Lic. EC41191

## Purcell CONTRACT SPRAYING

LANDCRUISER UTE, 14M GRAYTILL BOOM  
GPS GUIDED AUTO STEER

**Chris Purcell 0408 332 896**

## CURTIS MOWERS

**Servicing & repairing**  
all types of outdoor power equipment

\*Mowers & Ride-ons \*Chainsaws

\*Pumps \*Brush cutters & more

**JAMES – 0488 020 762**

## A G W RURAL CONTRACTING

GPS Equipped boom spraying

**Andrew Wauch 0427 549 748**



**WALCHA LAW**  
SOLICITORS

**Sophie Thomson | James Levingston**

Conveyancing | Power of Attorneys  
Wills | Estates | Traffic Offences

Local Firm - over 70yrs in the Community

**02 6777 2066** info@walchalaw.com.au  
walchalaw.com.au

INCORPORATING PATTERSON BYFIELD & BRYEN

## Ewe Beauty

at New Beginnings Hair Salon

**9am - 5.30pm**

**Tuesday/Thursday/Friday**

For all your beauty needs

**0418 827 088**



## CHIROPRACTOR

**K Samantha Goor**

B.Sc. Anatomy (NSW) M Chiroprac (Macq)

**Tuesday & Friday from 9.00am**

**6777 1340**



**DREW BIRD ELECTRICAL**

**Call 0456 185 304**

RURAL. DOMESTIC. COMMERCIAL.  
drewbirdelectrical@gmail.com Lic No.400883C

## MOBILE-FIX AUTO+AIR

**Mobile Repairer &  
Airconditioning Specialist**

Licensed Vehicle Repairer  
Lic No.46696 RTA Lic No. AU22616

**PATRICK STACE – WALCHA**

**Mob. 0428 780 077 Ph. 6778 0595**



## Excavator with Operator



- 5 Tonne Excavator
- Detail excavation
- Site clean-ups
- Shed pads

**0417 379 122 - Gary Cole**



**ANGUS  
CRAWFORD  
PLUMBING**

**0407 192 192**

A\_C\_P@outlook.com

Licence. 313605C

# Marchant Est. 2000

**BROS. PTY**



A FULL RANGE OF AFFORDABLE TRANSPORT & EARTHMOVING  
**COMMERCIAL WATER CARTING**  
 Dam construction/maintenance, stick raking, road building,  
 site prep, pipe laying and all timber work.

Check out our website for the full range of machinery,  
 attachments and services available



**DELIVERING  
 SPLIT  
 FIREWOOD**

ORGANIC, LOW SMOKE, HIGH HEAT.  
 Beat the climate change, order now

**Earthmoving and Heavy Haulage Transport**  
**Jason 0427 490 487**

02 6777 2024 marchantbros@bigpond.com  
 www.marchantbros.com.au

**FOR ALL YOUR EARTHWORKS TRANSPORT AND ELECTRICAL NEEDS**



Freight & Transport

Machinery Float

Road building and maintenance

Dam maintenance and construction

Firebreaks • Drilling • Trenching • Stick Raking

Mulching • Fence Clearing • General Earthworks

Erosion Control • Site Preparation

Electrical • Pipe Laying

10ft Slashing

Ian Notley 04188 29188

Mark Notley 0422 637 686

Office 02 6777 6595



ALL ASPECTS OF RURAL,  
 COMMERCIAL & CIVIL WORKS  
 www.eteservices.com.au

## WALCHA BOWLING & RECREATION CLUB



### Thursday 17

9.00am For 9.30am – Ladies bowls.  
 1.00pm Social bowls – All Welcome

**FOOTBALL TIPPING  
 COMPETITION COMMENCES**

### Friday 18

2.00pm Bingo  
 5.30pm Twilight bowls  
 6.00pm Bistro

**Menu:** Barramundi Fillets topped with  
 crumbed calamari rings, Homemade Lasagne,  
 Chicken Kiev wrapped in bacon with a white  
 wine sauce  
 Normal menu, takeaway & desserts  
 8.00pm Meat & Veg raffles followed by  
 Members Draw

### Saturday 19

6.00pm Bistro

### Sunday 20

12pm Bistro  
 1pm Meat and Vegie raffles  
**LUCKY DOOR DRAW**

**MEMBERS  
 DRAW  
 \$100**

YOU MUST BE A MEMBER  
 FOR 2021/2022 TO BE  
 ELIGIBLE TO WIN

Monday to Wednesday 4.00pm to close  
 Thursday 12 midday to close  
 Friday 2.00pm to close  
 Saturday and Sunday 11am to close  
**Phone 6777 2077**

Do you live in Walcha Shire?  
 If so you **MUST** be a member  
 to enter the Club.  
 Social Membership ..... \$15  
 Full Membership ..... \$105



Wayne Hoy: 0427 281 060  
 Matthew Hoy: 0427 322 640  
 Aaron Bullen: 0409 776 340

**SPRAYING  
 SOWING**

**EXCAVATING  
 EARTHMOVING**

*GPS & Auto Steer Equipped*

- Komatsu PC300 Excavator
- Cat 324 Excavator
- Cat D6N Dozer
- 2000ltr Quikspray Trailers
- Casotti's
- 4 x4 Tip Truck
- 4x4 Trucks & Boomsprays
- Full auto Rate Control
- GPS & Autosteer
- 4x4 Tractors GPS Equipped
- 20 & 24 disc Williams Seeders
- Fencing & Rural Contracting