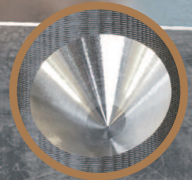




# High Performance Tool ACE Spot Drill

See more specification



Fine surface finish

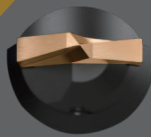


Ancient



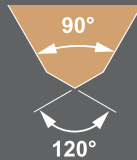
Now & Future

- ▶ High rigidity.
- ▶ High precision.
- ▶ Ultra-long tool life.
- ▶ Fine surface finish.



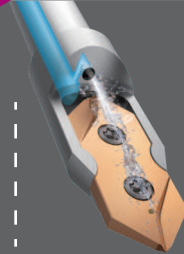
### 2-flutes edged

It is symmetric, it reduces the lateral force.



### Dual point angle

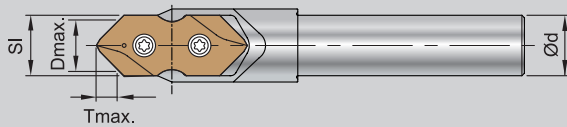
ensure strength at the centre to prevent fracturing.



### Internal Coolant

Optimized coolant design for better balancing.

## ▶ 90° MiniSets



Grade	Coating	Steel	Cast Iron
NC2057	AlTiN+TiSiN	●	●

EDP #	Fig.	SI	Parts No.	Ød	Dmax.	Tmax.	Insert Included	Content	Promo
21043	1	06 (0.236")	99688-SI06-06-MS	6 (0.236")	5.5 (0.217")	2.5 (0.098")	S9MT06T1-090-NC2057	Holder x 1 Insert x 2 Key x 1	\$130
21044	2	20 (0.787")	99688-SI20-20-MS	20 (0.787")	19.5 (0.768")	8.9 (0.350")	S9MT2004-090-NC2057	Holder x 1 Insert x 1 Key x 1	\$300



**EVEREDE TOOL COMPANY**  
800-621-5486 www.everede.net

**QTS QUALITY TOOLS & SERVICES, INC.**

BATON ROUGE 1-866-752-8729	BROUSSARD 1-866-500-2304	HAMMOND 1-800-621-3891	HOUMA 1-855-695-2703	LAKELAND 1-888-789-9770
-------------------------------	-----------------------------	---------------------------	-------------------------	----------------------------

qtstools.com Your Partner in Productivity