



AccuClamp™ Hydraulic Chuck

Focus on your Centerline TIR with the AccuClamp™ from Accutek®



Purchase Three AccuClamp Hydraulic chucks and get the Torque Wrench and three reductions sleeves at no additional cost.

A \$400 savings

Through March 31, 2024

The Accutek AccuClamp Hydraulic Chuck is a new way of tool holding with the highest TIR accuracy.

The new AccuClamp chucks are almost unbeatable in their combination of clamping power and precision. The reason is due to the intense knowledge of the technology to expand steel in a controlled and precise way, as well as the transformation of this technology into the clamping techniques.

This design and technology brings benefits and advantages to many machining applications. An absolute smooth surface and a TIR high accuracy are important in the field of fine machining. A high clamping force, however, is a must for secure clamping during roughing applications. AccuClamp hydraulic chucks are the appropriate tools for any application due to its controlled TIR within a few microns.

- High speed & fine milling
- Precision reaming
- Precision drilling
- Parallel milling
- Boring and chamfering
- Tool grinding

AccuClamp has a completely enclosed chamber system. No penetration of oil, grease, coolant, or chips is possible thus making it maintenance free and high life expectancy. Each AccuClamp unit is supplied with an AccuClamp torque wrench for proper clamping pressure and eliminating over tightening of clamping screw.



QUALITY TOOLS & SERVICES, INC.

BATON ROUGE
1-866-752-8729

BROUSSARD
1-866-500-2304

HAMMOND
1-800-621-3891

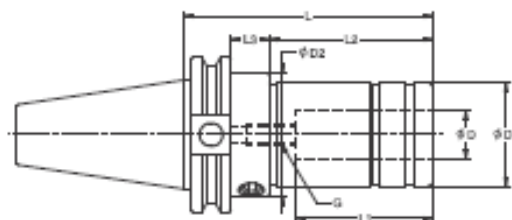
HOUMA
1-855-695-2703

LAKELAND
1-888-789-9770

qtstools.com

Your Partner in Productivity

CAT40 AccuClamp™ Hydraulic Chucks (ANSI/ASME B5.50-1994)

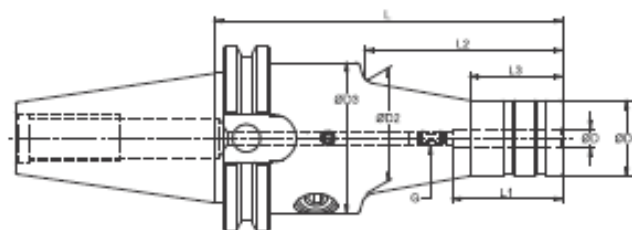


FEATURES

- Balanced to G2.5 @ 25,000 RPM
- T.I.R. < 0.0002"
- Taper shank ground to AT3 accuracy (or better)
- Bore tolerance: H6

Catalog Number	Description	ØD (inch)	ØD1 (inch)	ØD2 (inch)	L (inch)	L1 (inch)	L2 (inch)	L3 (inch)	G (inch)	Coolant Style
CAT40 Inch										
68242820	CAT40-HCS 0.750-4.00	0.750	1.65	2.05	4.00	2.05	2.28	0.96	M8x1	AD Thru
68242223	CAT40-HCS 1.250-4.52	1.250	2.36	2.36	4.52	2.44	3.78	-	M8x1	AD Thru
CAT40 Metric										
68242020	CAT40-HCS 20-100	20.00	42	52	100	52	56.4	24.5	M8x1	AD Thru
68243223	CAT40-HCS 32-115	32.00	60	60	115	60	60	-	M8x1	AD Thru

CAT40 AccuClamp™ Hydraulic Chucks Slim Design (ANSI/ASME B5.50-1994)



FEATURES

- Balanced to G2.5 @ 25,000 RPM
- T.I.R. < 0.0002"
- Taper shank ground to AT3 accuracy (or better)
- Bore tolerance: H6

Catalog Number	Description	ØD (inch)	ØD1 (inch)	ØD2 (inch)	ØD3 (inch)	L (inch)	L1 (inch)	L2 (inch)	L3 (inch)	G	Coolant Style
68241124SL	CAT40-HCSL 0.250-4.72	0.250	1.03	1.53	2.05	4.72	1.50	2.68	1.26	M5x0.8	AD Thru
68241324SL	CAT40-HCSL 0.312-4.72	0.312	1.10	1.61	2.05	4.72	1.65	2.68	1.26	M5x0.8	AD Thru
68242624SL	CAT40-HCSL 0.375-4.72	0.375	1.18	1.69	2.05	4.72	1.77	2.68	1.26	M6x1	AD Thru
68241524SL	CAT40 HCSL 0.500-4.72	0.500	1.26	1.77	2.05	4.72	1.81	2.68	1.26	M8x1	AD Thru



QUALITY TOOLS & SERVICES, INC.

BATON ROUGE
1-866-752-8729

BROUSSARD
1-866-500-2304

HAMMOND
1-800-621-3891

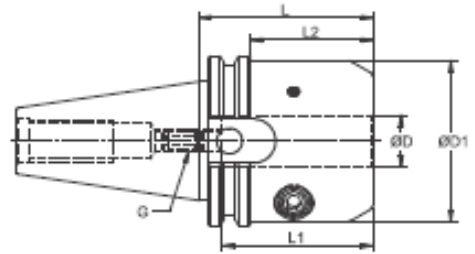
HOUMA
1-855-695-2703

LAKELAND
1-888-789-9770

qtstools.com

Your Partner in Productivity

CAT40 AccuClamp™ Heavy Duty Hydraulic Chucks (ANSI-ASME B5.50-1994)

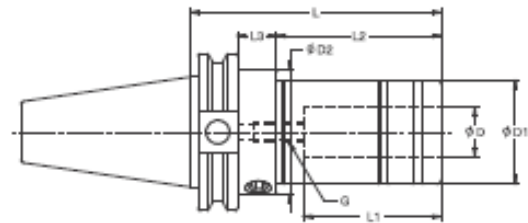


FEATURES

- Balanced to G2.5 @ 25,000 RPM
- T.I.R. < 0.0002"
- Taper shank ground to AT3 accuracy (or better)
- Bore tolerance: H6

Catalog Number	Description	ØD	ØD1	L	L1	L2	G	Coolant Style
67242813	CAT40-HC 0.750-2.50	0.75	2.36	2.50	2.05	1.75	M8x1	AD Thru
67242217	CAT40-HC 1.250-3.25	1.25	2.84	3.25	2.44	2.50	M8x1	AD Thru

CAT50 AccuClamp™ Hydraulic Chucks (ANSI/ASME B5.50-1994)



FEATURES

- Balanced to G2.5 @ 25,000 RPM
- T.I.R. < 0.0002"
- Taper shank ground to AT3 accuracy (or better)
- Bore tolerance: H6

	Catalog Number	Description	ØD (inch)	ØD1 (inch)	ØD2 (inch)	L (inch)	L1 (inch)	L2 (inch)	L3 (inch)	G (inch)	Coolant Style
CAT50 Inch	68262820	CAT50-HC5 0.750-4.00	0.750	1.65	2.05	4.00	2.05	2.28	0.96	M8X1	AD Thru
	68262225	CAT50-HC5 1.250-5.00	1.250	2.36	2.75	5.00	2.44	3.46	0.78	M8X1	AD Thru
CAT50 Metric	68262020	CAT50-HC5 20-100	20mm	42mm	52mm	100mm	52mm	56mm	25mm	M8X1	AD Thru
	68263225	CAT50-HC5 32-125	32mm	60mm	70mm	125mm	60mm	86mm	20mm	M8X1	AD Thru



QUALITY TOOLS & SERVICES, INC.

BATON ROUGE
1-866-752-8729

BROUSSARD
1-866-500-2304

HAMMOND
1-800-621-3891

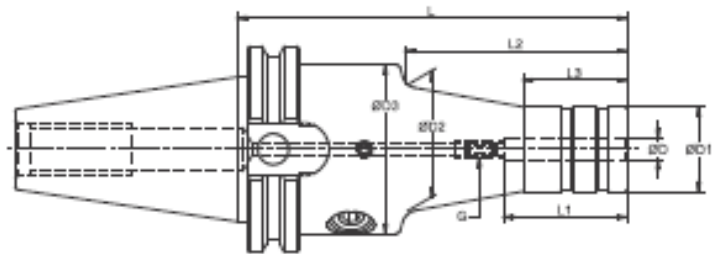
HOUMA
1-855-695-2703

LAKELAND
1-888-789-9770

qtstools.com

Your Partner in Productivity

CAT50 AccuClamp™ Hydraulic Chucks Slim Design (ANSI/ASME B5.50-1994)

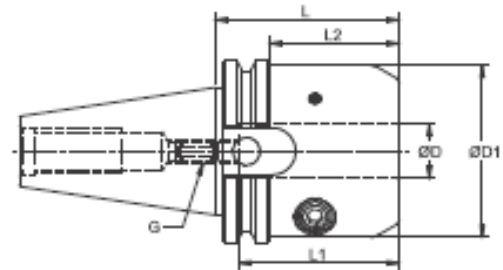


FEATURES

- Balanced to G2.5 @ 25,000 RPM
- T.I.R. < 0.0002"
- Taper shank ground to AT3 accuracy (or better)
- Bore tolerance: H6

Catalog Number	Description	ØD (inch)	ØD1 (inch)	ØD2 (inch)	ØD3 (inch)	L (inch)	L1 (inch)	L2 (inch)	L3 (inch)	G (inch)	Coolant Style
68241124SL	CAT50-HCSL 0.250-4.72	0.250	1.03	1.53	2.50	4.72	1.50	2.68	1.26	M5x0.8	AD Thru
68241324SL	CAT50-HCSL 0.312-4.72	0.312	1.10	1.61	2.50	4.72	1.65	2.68	1.26	M5x0.8	AD Thru
68242624SL	CAT50-HCSL 0.375-4.72	0.375	1.18	1.69	2.50	4.72	1.77	2.68	1.26	M6x1	AD Thru
68241524SL	CAT50 HCSL 0.500-4.72	0.500	1.26	1.77	2.50	4.72	1.81	2.68	1.26	M8x1	AD Thru

CAT50 AccuClamp™ Heavy Duty Hydraulic Chucks (ANSI-ASME B5.50-1994)



FEATURES

- Balanced to G2.5 @ 25,000 RPM
- T.I.R. < 0.0002"
- Taper shank ground to AT3 accuracy (or better)
- Bore tolerance: H6

Catalog Number	Description	ØD	ØD1	L	L1	L2	G	Coolant Style
67262817	CAT50-HC 0.750-3.25	0.75	2.36	3.25	2.05	2.50	M8x1	AD Thru
67262217	CAT50-HC 1.250-3.25	1.25	2.84	3.25	2.44	2.50	M8x1	AD Thru



QUALITY TOOLS & SERVICES, INC.

BATON ROUGE
1-866-752-8729

BROUSSARD
1-866-500-2304

HAMMOND
1-800-621-3891

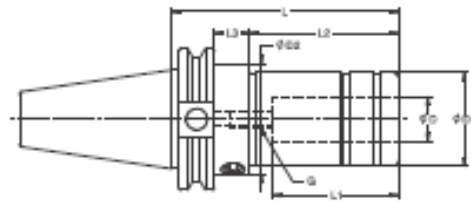
HOUMA
1-855-695-2703

LAKELAND
1-888-789-9770

qtstools.com

Your Partner in Productivity

CATP40 Face Contact AccuClamp™ Hydraulic Chucks

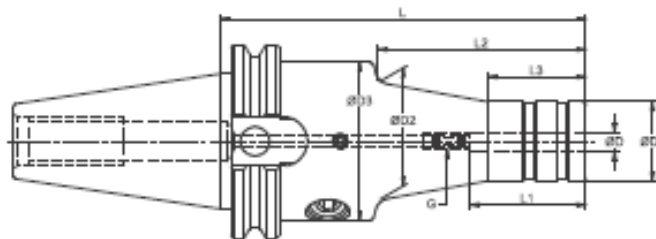


FEATURES

- Balanced to G2.5 @ 25,000 RPM
- T.I.R. < 0.0002"
- Taper shank ground to AT3 accuracy (or better)
- Bore tolerance: H6

	Catalog Number	Description	ØD (inch)	ØD1 (inch)	ØD2 (inch)	L (inch)	L1 (inch)	L2 (inch)	L3 (inch)	G (inch)	Coolant Style
CATP40	681362820	CATP40-HCS 0.750-4.00	0.750	1.65	2.05	4.00	2.05	2.28	0.96	M8x1	AD Thru
	681362223	CATP40-HCS 1.250-4.52	1.250	2.36	2.36	4.52	2.44	3.78	-	M8x1	AD Thru

CATP40 Face Contact AccuClamp™ Hydraulic Chucks Slim Design



FEATURES

- Balanced to G2.5 @ 25,000 RPM
- T.I.R. < 0.0002"
- Taper shank ground to AT3 accuracy (or better)
- Bore tolerance: H6

Catalog Number	Description	ØD (inch)	ØD1 (inch)	ØD2 (inch)	ØD3 (inch)	L (inch)	L1 (inch)	L2 (inch)	L3 (inch)	G (inch)	Coolant Style
681361124SL	CATP40-HCSL 0.250-4.72	0.250	1.03	1.53	2.05	4.72	1.50	2.68	1.26	M5x0.8	AD Thru
681361324SL	CATP40-HCSL 0.312-4.72	0.312	1.10	1.61	2.05	4.72	1.65	2.68	1.26	M5x0.8	AD Thru
681362624SL	CATP40-HCSL 0.375-4.72	0.375	1.18	1.69	2.05	4.72	1.77	2.68	1.26	M6x1	AD Thru
681361524SL	CATP40 HCSL 0.500-4.72	0.500	1.26	1.77	2.05	4.72	1.81	2.68	1.26	M8x1	AD Thru



QUALITY TOOLS & SERVICES, INC.

BATON ROUGE
1-866-752-8729

BROUSSARD
1-866-500-2304

HAMMOND
1-800-621-3891

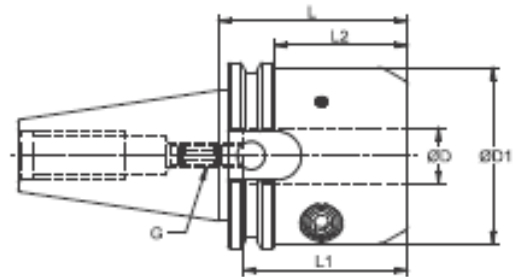
HOUMA
1-855-695-2703

LAKELAND
1-888-789-9770

qtstools.com

Your Partner in Productivity

CATP40 Face Contact AccuClamp™ Heavy Duty Hydraulic Chucks

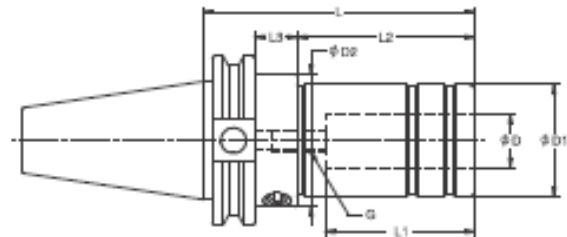


FEATURES

- Balanced to G2.5 @ 25,000 RPM
- T.I.R. < 0.0002"
- Taper shank ground to AT3 accuracy (or better)
- Bore tolerance: H6

Catalog Number	Description	ØD	ØD1	L	L1	L2	G	Coolant Style
671362813	CATP40-HC 0.750-2.50	0.75	2.36	2.50	2.05	1.75	M8x1	AD Thru
671362217	CATP40-HC 1.250-3.25	1.25	2.84	3.25	2.44	2.50	M8x1	AD Thru

CATP50 Face Contact AccuClamp™ Hydraulic Chucks



FEATURES

- Balanced to G2.5 @ 25,000 RPM
- T.I.R. < 0.0002"
- Taper shank ground to AT3 accuracy (or better)
- Bore tolerance: H6

	Catalog Number	Description	ØD (inch)	ØD1 (inch)	ØD2 (inch)	L (inch)	L1 (inch)	L2 (inch)	L3 (inch)	G (inch)	Coolant Style
CATP50 Inch	681382820	CATP50-HCS 0.750-4.00	0.750	1.65	2.05	4.00	2.05	2.28	0.96	M8x1	AD Thru
	681382225	CATP50-HCS 1.250-5.00	1.250	2.36	2.75	5.00	2.44	3.46	0.78	M8x1	AD Thru
CATP50 Metric	681382020	CATP50-HCS 20-100	20.000	42	52	100	52	56.4	24.5	M8x1	AD Thru
	681382520	CATP50-HCS 25-100	25.000	52	69.85	100	52	56.4	24.5	M8x1	AD Thru
	681383225	CATP50-HCS 32-125	32.000	60	69.85	125	60	85.9	20	M8x1	AD Thru



QUALITY TOOLS & SERVICES, INC.

BATON ROUGE
1-866-752-8729

BROUSSARD
1-866-500-2304

HAMMOND
1-800-621-3891

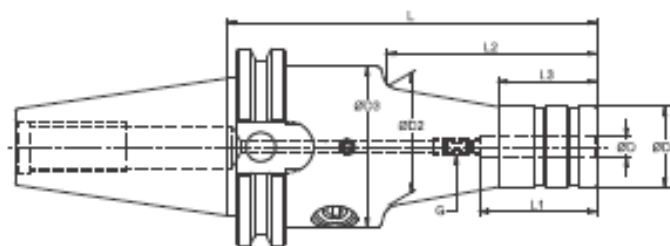
HOUMA
1-855-695-2703

LAKELAND
1-888-789-9770

qtstools.com

Your Partner in Productivity

CATP50 Face Contact AccuClamp™ Hydraulic Chucks Slim Design

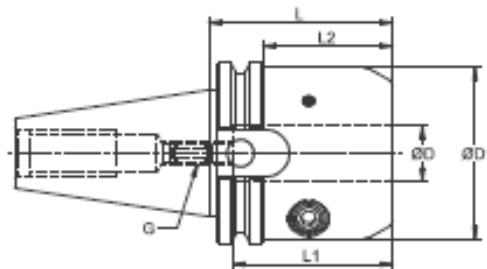


FEATURES

- Balanced to G2.5 @ 25,000 RPM
- T.I.R. < 0.0002"
- Taper shank ground to AT3 accuracy (or better)
- Bore tolerance: H6

Catalog Number	Description	ØD (inch)	ØD1 (inch)	ØD2 (inch)	ØD3 (inch)	L (inch)	L1 (inch)	L2 (inch)	L3 (inch)	G (inch)	Coolant Style
6813811245L	CATP50-HCSL 0.250-4.72	0.250	1.03	1.53	2.50	4.72	1.50	2.68	1.26	M5x0.8	AD Thru
6813813245L	CATP50-HCSL 0.312-4.72	0.312	1.10	1.61	2.50	4.72	1.65	2.68	1.26	M5x0.8	AD Thru
6813826245L	CATP50-HCSL 0.375-4.72	0.375	1.18	1.69	2.50	4.72	1.77	2.68	1.26	M6x1	AD Thru
6813815245L	CATP50 HCSL 0.500-4.72	0.500	1.26	1.77	2.50	4.72	1.81	2.68	1.26	M8x1	AD Thru

CATP50 Face Contact AccuClamp™ Heavy Duty Hydraulic Chucks



FEATURES

- Balanced to G2.5 @ 25,000 RPM
- T.I.R. < 0.0002"
- Taper shank ground to AT3 accuracy (or better)
- Bore tolerance: H6

Catalog Number	Description	ØD	ØD1	L	L1	L2	G	Coolant Style
671382817	CATP50-HC 0.750-3.25	0.75	2.36	3.25	2.05	2.50	M8x1	AD Thru
671382217	CATP50-HC 1.250-3.25	1.25	2.84	3.25	2.44	2.50	M8x1	AD Thru



QUALITY TOOLS & SERVICES, INC.

BATON ROUGE
1-866-752-8729

BROUSSARD
1-866-500-2304

HAMMOND
1-800-621-3891

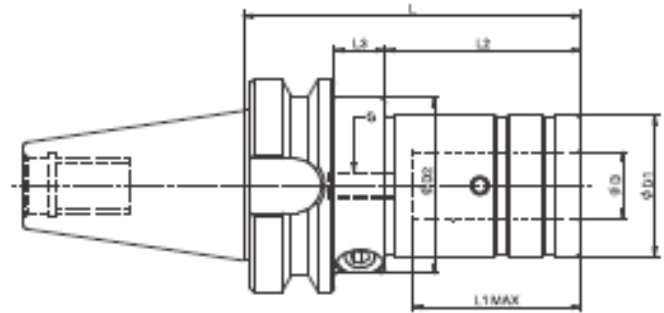
HOUMA
1-855-695-2703

LAKELAND
1-888-789-9770

qtstools.com

Your Partner in Productivity

BT AccuClamp™ Hydraulic Chuck (MAS 403)

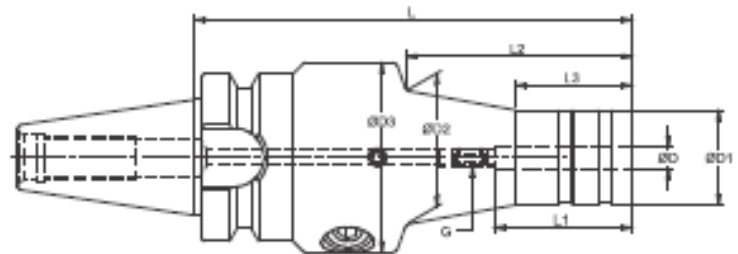


FEATURES

- Balanced to G2.5 @ 25,000 RPM
- T.I.R. < 0.0002
- Taper shank ground to AT3 accuracy (or better)
- Bore tolerance: H6

	Catalog Number	Description	ØD	ØD1	ØD2	L	L1 MAX	L2	L3	C	Coolant Style
BT30 Metric	68102020	BT30-HCS 20-100	20	42	52	100	52	53.8	19.05	M8X1	AD Thru
BT40 Metric	68122020	BT40-HCS 20-100	20	42	52	100	52	55.9	17.00	M8X1	AD Thru
	68123223	BT40-HCS 32-115	32	60	-	115	60	80.0	-	M8X1	AD Thru
BT30 inch	68102820	BT30-HCS 0.75-4.00	0.75	1.65	2.05	4.0	2.05	2.18	0.75	M8X1	AD Thru
BT40 Inch	68122820	BT40-HCS 0.75-4.00	0.75	1.65	2.05	4.0	2.05	2.20	0.67	M8X1	AD Thru
	68122223	BT40-HCS 1.25-6.52	1.25	2.36	-	4.52	2.44	3.50	-	M8X1	AD Thru

BT30 AccuClamp™ Hydraulic Chucks Slim Design (MAS 403)



FEATURES

- Balanced to G2.5 @ 25,000 RPM
- T.I.R. < 0.0002"
- Taper shank ground to AT3 accuracy (or better)
- Bore tolerance: H6

Catalog Number	Description	ØD (inch)	ØD1 (inch)	ØD2 (inch)	ØD3 (inch)	L (inch)	L1 (inch)	L2 (inch)	L3 (inch)	C (inch)	Coolant Style
681006245L	BT30-HCSL 6-120	6.000	26	36.60	52	120	38	62	32	M5x0.8	AD Thru
681008245L	BT30-HCSL 8-120	8.000	28	38.60	52	120	42	62	32	M5x0.8	AD Thru
681010245L	BT30-HCSL 10-120	10.000	30	40.60	52	120	45	62	32	M6x1	AD Thru
681012245L	BT30-HCSL 12-120	12.000	32	42.60	52	120	46	62	32	M8x1	AD Thru



QUALITY TOOLS & SERVICES, INC.

BATON ROUGE
1-866-752-8729

BROUSSARD
1-866-500-2304

HAMMOND
1-800-621-3891

HOUMA
1-855-695-2703

LAKELAND
1-888-789-9770

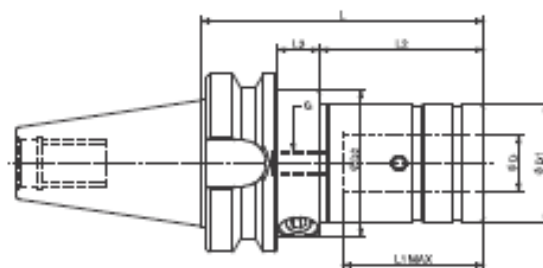


qtstools.com

Your Partner in Productivity

BTP Face Contact AccuClamp™ Hydraulic Chuck

PERMANENT KITING on page 130-132

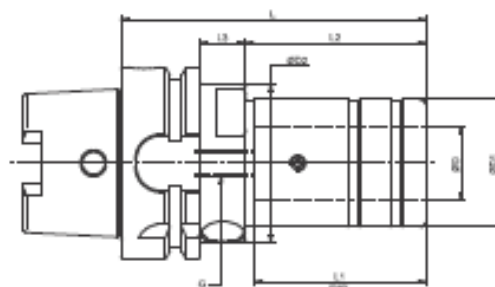


FEATURES

- Balanced to G2.5 @ 25,000 RPM
- T.I.R. < 0.0002
- Taper shank ground to AT3 accuracy (or better)
- Bore tolerance: H6

	Catalog Number	Description	ØD	ØD1	ØD2	L	L1 MAX	L2	L3	G	Coolant Style
BTP30 Metric	681062020	BTP30-HCS 20-100	20	1.65	2.05	100	2.05	2.16	0.75	M8X1	AD Thru
BTP40 Metric	681082020	BTP40-HCS 20-100	20	1.65	2.05	100	2.05	2.20	0.67	M8X1	AD Thru
	681083223	BTP40-HCS 32-115	32	2.36	-	115	2.44	3.46	-	M8X1	AD Thru
BTP30 inch	681062820	BTP30-HCS 0.75-4.00	0.75	1.65	2.05	4.0	2.05	2.22	0.75	M8X1	AD Thru
BTP40 inch	681082820	BTP40-HCS 0.75-4.00	0.75	1.65	2.05	4.0	2.05	2.20	0.67	M8X1	AD Thru
	681082223	BTP40-HCS 1.25-4.52	1.25	2.36	-	4.52	2.44	3.50	-	M8X1	AD Thru

HSK-A AccuClamp™ Hydraulic Chuck (DIN 69893 A+C)



FEATURES

- Balanced to G2.5 @ 25,000 RPM
- T.I.R. < 0.0002"
- Bore tolerance: H6

	Catalog Number	Description	ØD (inch)	ØD1 (inch)	ØD2 (inch)	L (inch)	L1 (inch)	L2 (inch)	L3 (inch)	G (inch)	Coolant Style
HSK50A	6873A2620	HSK50A-HCS 0.375-4.00	0.375	1.18	1.65	4.00	1.57	2.20	0.71	M8X1	AD Thru
	6873A1520	HSK50A-HCS 0.500-4.00	0.500	1.65	-	4.00	1.78	2.91	-	M8X1	AD Thru
	6873A2824	HSK50A-HCS 0.750-4.75	0.750	1.65	1.97	4.75	2.05	2.20	0.78	M8X1	AD Thru
HSK63A	6874A2820	HSK63A-HCS 0.750-4.00	0.750	1.65	2.05	4.00	2.05	2.20	0.78	M8X1	AD Thru
	6874A2225	HSK63A-HCS 1.25-5.00	1.250	2.36	-	5.00	2.44	4.00	-	M8X1	AD Thru
HSK63A Metric	6874A2020	HSK63A-HCS 20-100	20mm	42mm	52mm	100mm	52mm	56mm	18mm	M8X1	AD Thru
HSK100A	6876A2823	HSK100A-HCS 0.750-4.50	0.750	1.65	2.05	4.50	2.05	2.40	0.95	M8X1	AD Thru
	6876A2225	HSK100A-HCS 1.25-5.00	1.250	2.36	2.75	5.00	2.44	2.91	0.95	M8X1	AD Thru



QUALITY TOOLS & SERVICES, INC.

BATON ROUGE
1-866-752-8729

BROUSSARD
1-866-500-2304

HAMMOND
1-800-621-3891

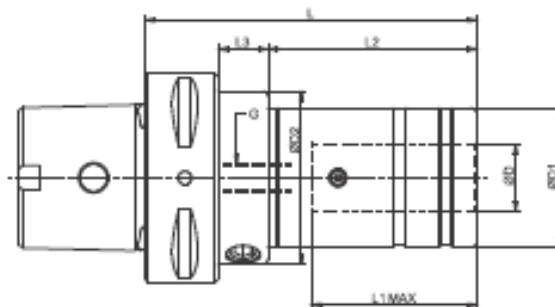
HOUMA
1-855-695-2703

LAKELAND
1-888-789-9770

qtstools.com

Your Partner in Productivity

PTI AccuClamp™ Hydraulic Chuck (ISO 26623-1)



FEATURES

- Balanced to G2.5 @ 25,000 RPM
- Bore tolerance: H6
- T.I.R. < 0.0002"

	Catalog Number	Description	ØD	ØD1	ØD2	L	L1 Max.	L2	L3	C	Coolant Style
PTI50 Shank	68682020	PTI50-HCS 20-100	20	42	50	100	52	56	16	M8x1	AD Thru
	68682820	PTI50-HCS 0.750-3.94	0.750"	1.65	1.97	3.94"	2.05	2.20	0.63	M8x1	AD Thru
	68682520	PTI50-HCS 25-100	25	50	-	100	52	-	-	M8x1	AD Thru
PTI63 Shank	68692020	PTI63-HCS 20-100	20	42	52	100	52	56	22	M8x1	AD Thru
	68692525	PTI63-HCS 25-125	25	52	52	125	52	102	-	M8x1	AD Thru
	68693225	PTI63-HCS 32-125	32	60	-	125	62	102	-	M8x1	AD Thru
	68692820	PTI63-HCS 0.750-3.94	0.750"	42	52	3.94"	52	56	0.86	M8x1	AD Thru
	68692225	PTI63-HCS 1.250-5.00	1.250"	60	-	5.00"	2.44"	4.05"	-	M8x1	AD Thru

Torque Wrench for AccuClamp™ Hydraulic Chuck



Catalog Number	Description	Range	
		Nm	Ft-lbs.
87924H20	HCS-0.75 / 20	55	400
87924H32	HCS-1.250 / 32	60	434



QUALITY TOOLS & SERVICES, INC.

BATON ROUGE
1-866-752-8729

BROUSSARD
1-866-500-2304

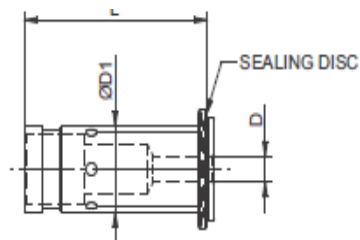
HAMMOND
1-800-621-3891

HOUMA
1-855-695-2703

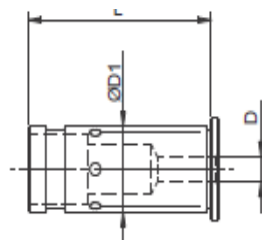
LAKELAND
1-888-789-9770

qtstools.com

Your Partner in Productivity



COLLET FOR ACCUMILL MULTI MILLING CHUCKS
MODEL - MC



COLLET FOR ACCUCLAMP HYDRAULIC CHUCKS
MODEL - HC

Series	ØD1	L
MC20	0.787	2.00
MC32	1.260	2.38
MC75	0.750	2.00
MC125	1.250	2.38

20mm MMC		20mm HCS		0.75" MMC		0.75" HCS	
Catalog Number	Description	Catalog Number	Description	Catalog Number	Description	Catalog Number	Description
954MC020003	MC20-3mm	954HC020003	HC20-3mm	954MC075003	MC75-3mm	954HC075003	HC75-3mm
954MC020004	MC20-4mm	954HC020004	HC20-4mm	954MC075004	MC75-4mm	954HC075004	HC75-4mm
954MC020005	MC20-5mm	954HC020005	HC20-5mm	954MC075005	MC75-5mm	954HC075005	HC75-5mm
954MC020006	MC20-6mm	954HC020006	HC20-6mm	954MC075006	MC75-6mm	954HC075006	HC75-6mm
954MC020007	MC20-7mm	954HC020007	HC20-7mm	954MC075007	MC75-7mm	954HC075007	HC75-7mm
954MC020008	MC20-8mm	954HC020008	HC20-8mm	954MC075008	MC75-8mm	954HC075008	HC75-8mm
954MC020009	MC20-9mm	954HC020009	HC20-9mm	954MC075009	MC75-9mm	954HC075009	HC75-9mm
954MC020010	MC20-10mm	954HC020010	HC20-10mm	954MC075010	MC75-10mm	954HC075010	HC75-10mm
954MC020011	MC20-11mm	954HC020011	HC20-11mm	954MC075011	MC75-11mm	954HC075011	HC75-11mm
954MC020012	MC20-12mm	954HC020012	HC20-12mm	954MC075012	MC75-12mm	954HC075012	HC75-12mm
954MC020013	MC20-13mm	954HC020013	HC20-13mm	954MC075013	MC75-13mm	954HC075013	HC75-13mm
954MC020014	MC20-14mm	954HC020014	HC20-14mm	954MC075014	MC75-14mm	954HC075014	HC75-14mm
954MC020015	MC20-15mm	954HC020015	HC20-15mm	954MC075015	MC75-15mm	954HC075015	HC75-15mm
954MC020016	MC20-16mm	954HC020016	HC20-16mm	954MC075016	MC75-16mm	954HC075016	HC75-16mm
954MC020125	MC20-1/8"	954HC020125	HC20-1/8"	954MC075125	MC75-1/8"	954HC075125	HC75-1/8"
954MC020187	MC20-3/16"	954HC020187	HC20-3/16"	954MC075187	MC75-3/16"	954HC075187	HC75-3/16"
954MC020250	MC20-1/4"	954HC020250	HC20-1/4"	954MC075250	MC75-1/4"	954HC075250	HC75-1/4"
954MC020312	MC20-5/16"	954HC020312	HC20-5/16"	954MC075312	MC75-5/16"	954HC075312	HC75-5/16"
954MC020375	MC20-3/8"	954HC020375	HC20-3/8"	954MC075375	MC75-3/8"	954HC075375	HC75-3/8"
954MC020437	MC20-7/16"	954HC020437	HC20-7/16"	954MC075437	MC75-7/16"	954HC075437	HC75-7/16"
954MC020500	MC20-1/2"	954HC020500	HC20-1/2"	954MC075500	MC75-1/2"	954HC075500	HC75-1/2"
954MC020562	MC20-9/16"	954HC020562	HC20-9/16"	954MC075562	MC75-9/16"	954HC075562	HC75-9/16"
954MC020625	MC20-5/8"	954HC020625	HC20-5/8"	954MC075625	MC75-5/8"	954HC075625	HC75-5/8"

All MC and HC Collets are supplied with Rubber and Aluminum Coolant seals that are removable but not desired.



QUALITY TOOLS & SERVICES, INC.

BATON ROUGE
1-866-752-8729

BROUSSARD
1-866-500-2304

HAMMOND
1-800-621-3891

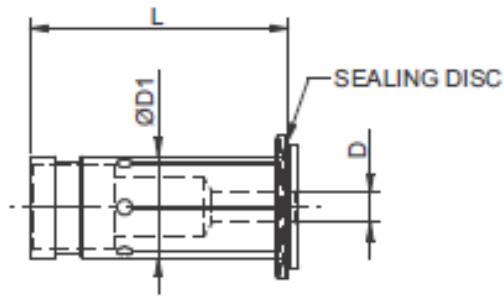
HOUMA
1-855-695-2703

LAKELAND
1-888-789-9770

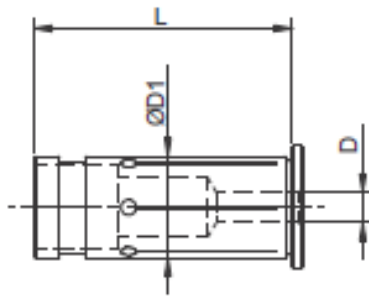
qtstools.com

Your Partner in Productivity

Reduction Collets for AccuClamp Hydraulic™ Chucks



COLLET FOR ACCUMILL MULTI MILLING CHUCKS
MODEL - MC



COLLET FOR ACCUCLAMP HYDRAULIC CHUCKS
MODEL - HC

Series	ØD1	L
MC20	0.787	2.00
MC32	1.260	2.38
MC75	0.750	2.00
MC125	1.250	2.38

32mm MMC		32mm HCS		125" MMC		1.25" HCS	
Catalog Number	Description	Catalog Number	Description	Catalog Number	Description	Catalog Number	Description
954MC032003	MC32-3mm	954HC032003	HC32-3mm	954MC125003	MC125-3mm	954HC125003	HC125-3mm
954MC032004	MC32-4mm	954HC032004	HC32-4mm	954MC125004	MC125-4mm	954HC125004	HC125-4mm
954MC032005	MC32-5mm	954HC032005	HC32-5mm	954MC125005	MC125-5mm	954HC125005	HC125-5mm
954MC032006	MC32-6mm	954HC032006	HC32-6mm	954MC125006	MC125-6mm	954HC125006	HC125-6mm
954MC032007	MC32-7mm	954HC032007	HC32-7mm	954MC125007	MC125-7mm	954HC125007	HC125-7mm
954MC032008	MC32-8mm	954HC032008	HC32-8mm	954MC125008	MC125-8mm	954HC125008	HC125-8mm
954MC032009	MC32-9mm	954HC032009	HC32-9mm	954MC125009	MC125-9mm	954HC125009	HC125-9mm
954MC032010	MC32-10mm	954HC032010	HC32-10mm	954MC125010	MC125-10mm	954HC125010	HC125-10mm
954MC032011	MC32-11mm	954HC032011	HC32-11mm	954MC125011	MC125-11mm	954HC125011	HC125-11mm
954MC032012	MC32-12mm	954HC032012	HC32-12mm	954MC125012	MC125-12mm	954HC125012	HC125-12mm
954MC032013	MC32-13mm	954HC032013	HC32-13mm	954MC125013	MC125-13mm	954HC125013	HC125-13mm
954MC032014	MC32-14mm	954HC032014	HC32-14mm	954MC125014	MC125-14mm	954HC125014	HC125-14mm
954MC032015	MC32-15mm	954HC032015	HC32-15mm	954MC125015	MC125-15mm	954HC125015	HC125-15mm
954MC032016	MC32-16mm	954HC032016	HC32-16mm	954MC125016	MC125-16mm	954HC125016	HC125-16mm
954MC032017	MC32-17mm	954HC032017	HC32-17mm	954MC125017	MC125-17mm	954HC125017	HC125-17mm
954MC032018	MC32-18mm	954HC032018	HC32-18mm	954MC125018	MC125-18mm	954HC125018	HC125-18mm
954MC032019	MC32-19mm	954HC032019	HC32-19mm	954MC125019	MC125-19mm	954HC125019	HC125-19mm
954MC032020	MC32-20mm	954HC032020	HC32-20mm	954MC125020	MC125-20mm	954HC125020	HC125-20mm
954MC032021	MC32-21mm	954HC032021	HC32-21mm	954MC125021	MC125-21mm	954HC125021	HC125-21mm
954MC032022	MC32-22mm	954HC032022	HC32-22mm	954MC125022	MC125-22mm	954HC125022	HC125-22mm
954MC032023	MC32-23mm	954HC032023	HC32-23mm	954MC125023	MC125-23mm	954HC125023	HC125-23mm
954MC032024	MC32-24mm	954HC032024	HC32-24mm	954MC125024	MC125-24mm	954HC125024	HC125-24mm
954MC032025	MC32-25mm	954HC032025	HC32-25mm	954MC125025	MC125-25mm	954HC125025	HC125-25mm
954MC032125	MC32-1/8"	954HC032125	HC32-1/8"	954MC125125	MC125-1/8"	954HC125125	HC125-1/8"
954MC032187	MC32-3/16"	954HC032187	HC32-3/16"	954MC125187	MC125-3/16"	954HC125187	HC125-3/16"
954MC032250	MC32-1/4"	954HC032250	HC32-1/4"	954MC125250	MC125-1/4"	954HC125250	HC125-1/4"
954MC032312	MC32-5/16"	954HC032312	HC32-5/16"	954MC125312	MC125-5/16"	954HC125312	HC125-5/16"
954MC032375	MC32-3/8"	954HC032375	HC32-3/8"	954MC125375	MC125-3/8"	954HC125375	HC125-3/8"
954MC032437	MC32-7/16"	954HC032437	HC32-7/16"	954MC125437	MC125-7/16"	954HC125437	HC125-7/16"
954MC032500	MC32-1/2"	954HC032500	HC32-1/2"	954MC125500	MC125-1/2"	954HC125500	HC125-1/2"
954MC032562	MC32-9/16"	954HC032562	HC32-9/16"	954MC125562	MC125-9/16"	954HC125562	HC125-9/16"
954MC032625	MC32-5/8"	954HC032625	HC32-5/8"	954MC125625	MC125-5/8"	954HC125625	HC125-5/8"
954MC032750	MC32-3/4"	954HC032750	HC32-3/4"	954MC125750	MC125-3/4"	954HC125750	HC125-3/4"
954MC032875	MC32-7/8"	954HC032875	HC32-7/8"	954MC125875	MC125-7/8"	954HC125875	HC125-7/8"
954MC032100	MC32-1"	954HC032100	HC32-1"	954MC125100	MC125-1"	954HC125100	HC125-1"

All MC and HC Collets are supplied with Rubber and Aluminum Coolant seals that are removable but not desired.



QUALITY TOOLS & SERVICES, INC.

BATON ROUGE
1-866-752-8729

BROUSSARD
1-866-500-2304

HAMMOND
1-800-621-3891

HOUMA
1-855-695-2703

LAKELAND
1-888-789-9770

qtstools.com

Your Partner in Productivity