

# 3 District Leaders Transform Educational Practices with Formative







## Lesson #1

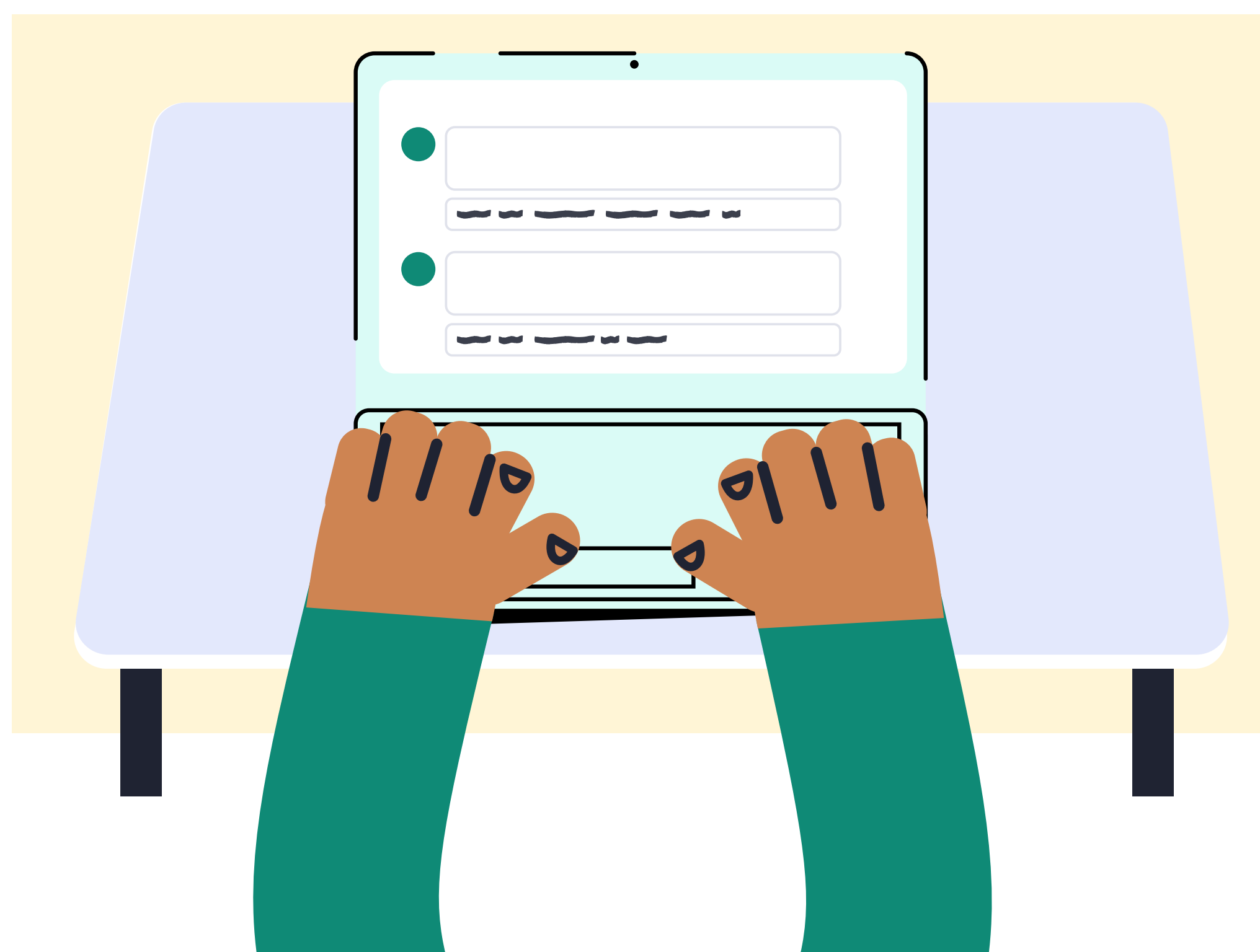
# How Lindsay Thompson Fosters Consistent Learning Experiences Across Her District

## Lindsay Thompson

### Digital Learning Specialist

Every day, district leaders across the nation confront a myriad of pedagogical challenges. For Digital Learning Specialist Lindsay Thompson, there are “so many teachers and staff [in Thomas County Central Schools] out...and we are having to make sure that our students are still being served.”

This situation puts an additional burden on Thomas County’s remaining educators since “they are having to pick up the slack.” It goes without saying that these pressures negatively impact the quality of resources that teachers prepare on a daily basis.



Thankfully, “Formative has been very helpful” in preparing Lindsay and her district to keep their learners top of mind. No matter what form the classroom takes, educators “can go ahead and schedule...assignment[s] in” Formative’s shared and private libraries.

If Lindsay’s district has last-minute “subs in a classroom, or we have a large class, and the teachers are feeling overwhelmed,” teachers can still receive quick and easy onboarding into the new classroom settings, “find assessments that are already created, and Formative can [then] deliver those assessments to the students.”



Lindsay has noticed that “if teachers don’t have good lesson plans that they’ve left for [another] teacher or the sub,” then teachers are left “scrambling to make sure the students have something to do.”

In addition, her district sometimes has to combine students into “a really large class” when many teachers are absent or juggling multiple responsibilities. Larger classroom spaces disrupt the learning experience for students, who struggle to navigate a space “larger than what [they’re] used to.”

## District Snapshot



- ✦ Thomas County Central School District
- ✦ Thomasville, Georgia, USA
- ✦ District student population: 5,832



1-833-463-6761



hello@formative.com



formative.com



Lindsay also loves how Formative helps students retain consistent learning experiences. With “the curriculum available for the students online,” Formative syncs “directly with Google Classroom” so that students receive updates from teachers with “really no downtime.” As a result, Lindsay and her educators can have students log in anywhere “for their assignments...And everything they need is there.”

Using Formative’s advanced tracking functions, teachers receive “all this data to show that the students have learned, what they still need to learn, what they need to review, or if they can move on.”

This invaluable data makes Formative “a great tool for us to use in our schools,” and one that contains “everything they need...everything that students need...and [one that] makes it easier for” Thomas County!

## Lindsay's Key Strategies!

- ✦ Leveraging shared and private libraries for quick and easy teacher onboarding.
- ✦ Syncing directly with Google Classroom integrations for instantaneous classroom updates.
- ✦ Using advanced tracking and real-time data to monitor student learning opportunities whether teaching happens remotely or in person.



## Lesson #2

# How Susan Uram Creates Stability and Flexibility for Educational Stakeholders

Susan Uram

Director of Educational Technology

Rockford Public Schools Director of Educational Technology Susan Uram knows all too well the challenges educators face during day-to-day teaching realities.

As she describes the problem, “at any given moment, whether it's just [being] around a large number of kids...[or] a large number of teachers being out, it's highly stressful.”

These challenges negatively affect students, who are “not used to being with [a substitute] teacher...in a classroom that they're not” used to, and they keep learners from making meaningful connections with the course curriculum.



1-833-463-6761



hello@formative.com



[formative.com](https://formative.com)





All of these hindrances confuse and unsettle educators and learners. Susan characterizes the mood in her district as “one wild ride,” with teachers “being asked to give of themselves even more.”

Such experiences are “disconcerting, for everybody to kind of always feel like you never know what you're going to find when you get to school.”

Ultimately, Susan worries that these issues turn the classroom into an unfamiliar space. Teachers are “daily being asked to give of themselves even more,” and Susan worries that “mak[ing] any gains forward seems really hard right now.”

As a result, Susan uses Formative to maintain stability and flexibility for educators within her district. Teachers can access standards-aligned materials in the shared and private libraries. Furthermore, Susan loves that these shared resources support teacher workload, which ensures consistent coverage and makes onboarding subs and new teachers quick and easy.

Most importantly, though, Formative foregrounds the student learning experience. The platform's advanced tracking functions provide data that helps Rockford Public School educators “tal[k] cohesively about the students.”

As they meet in their individual departments or PLCs, Susan's teachers are “having such better conversations about how to go forward” when handling support and classroom management.

What did they discover? That Formative “can help all the learners get to their learning in a more efficient and successful way!”

## District Snapshot



- ✦ Rockford Public Schools
- ✦ Rockford, Illinois, USA
- ✦ District student population: 28,194

Formative helps Susan and her Rockford educators stay focused on what matters most: their students!

## Susan's Key Strategies!

- ✦ Accessing standard-aligned resources whether teaching happens at-home or in-school.
- ✦ Leveraging shared and private libraries for quick and easy teacher onboarding.
- ✦ Using advanced tracking and real-time data to monitor student learning opportunities.







## Lesson #3

# How Jenn Mann Improves Instruction for All Teachers and Learners

## Jenn Mann

### Digital Curriculum & Math TOSA

When Digital Curriculum & Math TOSA Jenn Mann reflects on the overall health of her Beaverton School District, she focuses on the intense “stress of the workload” affecting her district’s educators.

“Teachers,” Jenn says, “are covering for other teachers” who are overloaded with coursework or heavy class numbers. “And that’s impacting their plan time and time to grade and time to create lessons.”

In addition, Jenn notes that her district also faces a sub shortage that puts Beaverton educators under further strain. Like so many of her peers, Jenn herself has to “help sub in classrooms” when the need demands it.



All of these challenges compromise classroom instructions: as Jenn notes “when you have 25 [or] 30 kids in a classroom, sometimes more, you really can’t get to every kid’s table to see what they’re actually working on” under less-than-optimal conditions.

Thankfully, in Formative Jenn has found a powerful tool to face these struggles and improve the quality of instruction for her district’s learners. “Formative,” she notes, “makes it so easy and efficient for teachers to give meaningful feedback, and on a regular basis.”

Formative’s library stores thousands of accessible, standards-aligned assessments “that allow students to continue to do the work that they’re doing,” no matter what the circumstances might be.

These shared resources and nuanced student data provide quick onboarding for substitutes while still letting teachers “check in...from their end and see the work that their students are doing.” With the real-time interactions that Formative facilitates, educators can provide students with “quality...guidance.” Best of all, “teachers can [provide that guidance] more efficiently, and [the platform] saves them time.”

For Jenn Mann and Beaverton School District, Formative helps them to always “fin[d] different wins” in the classroom. Mann’s teachers now have the power to “see the whole class in one moment and figure out, ‘Is there something I want to highlight? Is there somewhere I want to intervene?’ And so that’s been huge.”

## District Snapshot



- ✦ Beaverton School District
- ✦ Beaverton, Oregon, USA
- ✦ District student population: 39,515



## Jenn's Key Strategies

- ✦ Accessing standard-aligned resources whether teaching happens at-home or in-school.
- ✦ Leveraging shared and private libraries for quick and easy teacher onboarding.
- ✦ Using advanced tracking and real-time data to monitor student learning opportunities and provide quality feedback.



There is hope!

[Click here](#) to **schedule a meeting** today!

**Backed by Research**

**92%** of teachers

believe Formative fits easily into their weekly schedules.\*

**ESSA  
LEVEL 3**

Formative meets Level 3 ESSA evidence requirements.\*\*

**93%** of teachers

believe Formative is a valuable tool for their classrooms.\*

\*Formative's Research-Based Approach

\*\*Based on validated third-party research services provided by LearnPlatform, a for-benefit research organization. [Formative Pilot Study Report - Study Type: ESSA Evidence Level III](#)

Trusted by district leaders around the world

