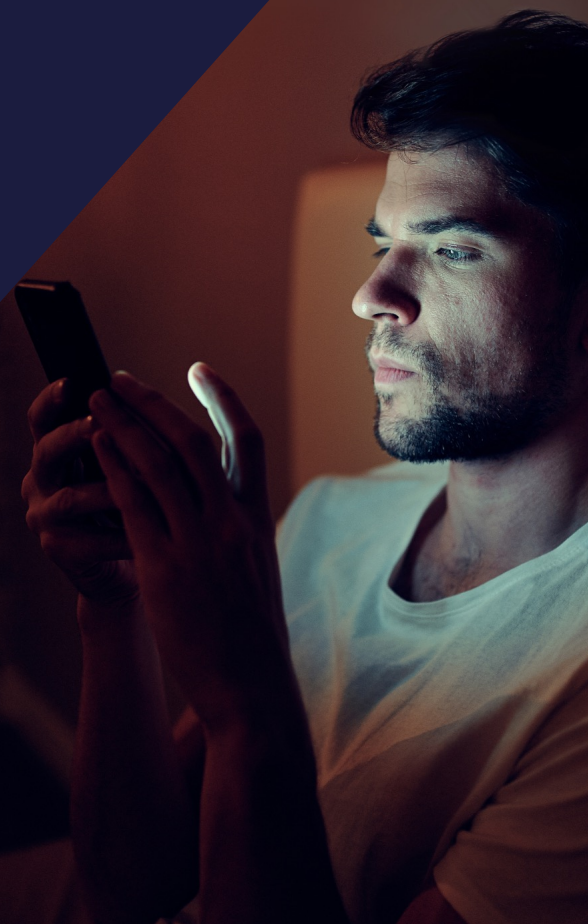




## THE NTEGRA DIFFERENCE

**Ntegra helps businesses to achieve  
their potential through technology.**



## CONTENTS

Section

01

**NTEGRA'S APPROACH TO  
END-TO-END DEVELOPMENT**

---

Section

02

**WHAT CAN NTEGRA  
DO FOR YOU**

---

Section

03

**WHAT OUR CLIENTS  
HAVE TO SAY**



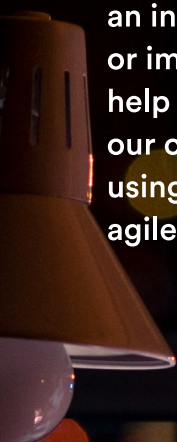
## INTRODUCTION

We are a tech consultancy company, specialising in complex project and programme delivery to get the job done. We are paving the way for your business to unlock its full productive potential.

Whether it's a custom web application, an intranet, data centre modernisation, or implementing cloud strategies, we help our clients to solve business challenges using cutting-edge tech and our proven, agile delivery method.

We focus on maximising the value of our customers' IT and business processes.

We accomplish this by effectively delivering your project, while simultaneously transferring new skills and techniques to your workforce. All of which, leaves you with the capability to maintain the solution once we are done.



Section

01

# NTEGRA'S APPROACH TO END-TO-END DEVELOPMENT





## NTEGRA'S APPROACH TO END-TO-END DIGITAL DEVELOPMENT

The solutions we build are carefully defined to address the exact needs of our clients. We make a point of delivering on time and to budget, exceeding expectations every time. Our ethos is one of honesty and transparency, that's why we've been long-term partners with so many of our clients and 92% of our business comes from personal recommendations.

Prototyping at an early stage is what our clients love most. We can both advise on the scope of your project and show you the prototype to bring the solution to life. Not only does this give you something tangible to review, it helps to demonstrate the value of the project to all stakeholders, even senior members not directly involved.

**From the boardroom suits, to the boots on the ground Prototyping brings the project to life for everybody**

Prototyping is also a powerful method of refining the exact needs of our clients, giving you the peace of mind that we fully comprehend your goals and objectives. As a core component of our agile development methodology, a prototype rapidly enables both you and ourselves to work in a collaborative, iterative way. Your insight will have a direct impact on refining and expediting the delivery of the project.



## NTEGRA'S APPROACH TO END-TO-END DIGITAL

Encouraging the adoption and engagement of our solutions is another area where Ntegra excels – it is our business to ensure your business successfully adopts new technology and tools. Increasing the adoption rate of the solution leads to greater ROI and benefit realisation for you. Your teams need to feel confident in new processes and ways of working, if your business is to gain genuine, additional value.

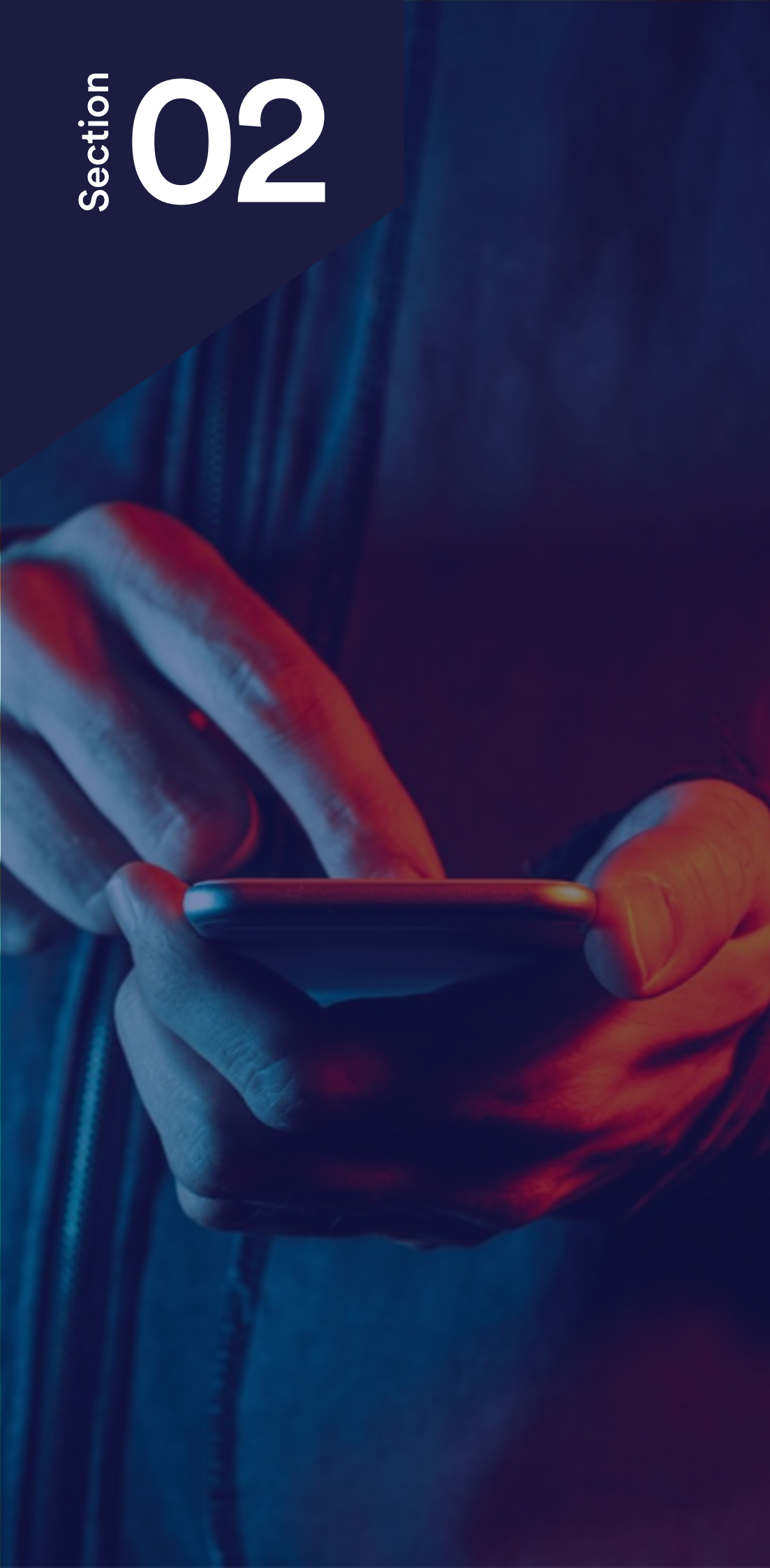
Our robust QA and test management protocols ensure a high degree of accuracy, we'll find any bugs and squash them before you do. This thoroughness reduces the number of in-production issues, which ultimately means less time testing for you.

Finally, when it comes to post-go-live support and project handover, we don't just leave you to figure it out on your own. Instead, we communicate throughout the lifecycle of the product, ensuring that the final handover is a routine effort. All necessary documentation and onboarding support have been designed to empower your own continued development. We do this with you, not to you.



# Section 02

**WHAT CAN NTEGRA  
DO FOR YOU**





# WHAT CAN NTEGRA DO FOR YOU?

To deliver a successful outcome and ensure your vision becomes reality, we provide you with every aspect of your project, from inception, to build, right the way through to launch.

**Ntegra can support your business in the following areas:**

- Development
- UI and UX
- QA and Testing
- Business Change
- Emerging Technology Monitoring
- Programme Management Office and Project Delivery
- Technical Architecture and Enablement

**Our expert consultants have an impressive track record of complex project delivery in the following specialist areas:**



**Business Intelligence**



**Billing and Customer Engagement**



**Collaboration and Knowledge Management**



**Data Centre, Infrastructure and Cloud Technology**

**Our success comes from enhancing the capability of both our customers' technology and their people, providing them with what they need to succeed.**

# WHAT CAN NTEGRA DO FOR YOU?

## Development

We blend the latest techniques and technology to build engaging, user focused, and functionally rich applications

## UI and UX

We can re-design or re-build your entire UI/UX journey, in a way that your people will love to use

## QA and Testing

Our robust QA and testing process ensure that we can find and fix bugs before they go into production

## Business Change

Our extensive experience means that any business changes are carefully planned and smoothly implemented

## Emerging Technology Monitoring

Our network of VC's and startups in global tech hubs, allows us to identify, and assess, new and emerging technologies. This prepares your business for the future as you exploit the innovations of today.

## Programme Management Office and Project Delivery

From beginning to end, we specialise in managing complex project delivery and our PMO support is designed to empower you.

## Technical Architecture & Enablement

Planning, designing and building best practice solutions that drive your business forward, no matter your sector.





Section

03

**WHAT OUR CLIENTS  
HAVE TO SAY**





## WHAT OUR CLIENTS HAVE TO SAY

### Wavemaker

#### Wavemaker

“I have worked on a complex and demanding project with Ntegra which is redefining the way in which our teams deliver strategies to their clients. Ntegra are a partner I can trust as they understand how media agencies operate and what is important for us as a business and our people.”

David Kaganovsky, CTO, Wavemaker



#### Vodafone

“The Ntegra team has been essential in delivering a critical, ground-breaking and complex BI programme, with us from the outset and continuing to support us in the next phases. Their expertise and professionalism are outstanding, creating value in all aspects of the project.”

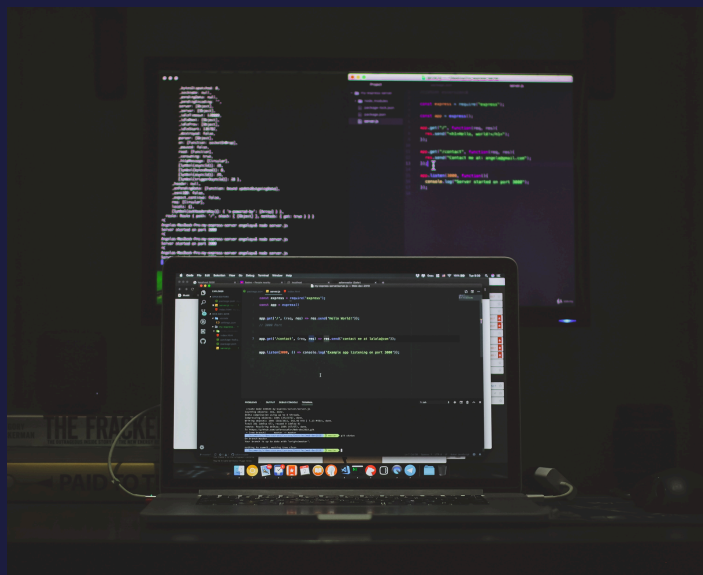
Ilinca Dragomir, Head of Global Programmes, Vodafone

### dentsu

#### Dentsu Aegis Network

“The Ntegra team have been instrumental in supporting Dentsu Aegis Network develop and build tools. Tools that have empowered our business to work more efficiently in optimising our teams, allowing them to share resources and information across the globe. We have worked with them for four years now and will continue to do so as they excel at engagement, delivery of projects, and support services.”

Matt Miller, Global Applications Director, Dentsu Aegis Network



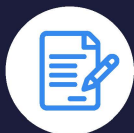


**Please contact:**

**Ben Gosset, Client Account Director.**

**E: [ben.gosset@ntegra.com](mailto:ben.gosset@ntegra.com)**

**T: +44 (0) 7951 232 665**



**Sign up to our newsletter**

