



DEMOUNTABLE CONCEPTS

• AMERICA'S SWAP BODY •



Air-Swap System Quick Guide

Toll Free: (844) 364-4021

Local: (856) 863-0900

Fax: (856) 863-6704

E-mail: sales@demount.com

Web: demount.com



Demountable containers, standard truck bodies equipped with retractable legs.



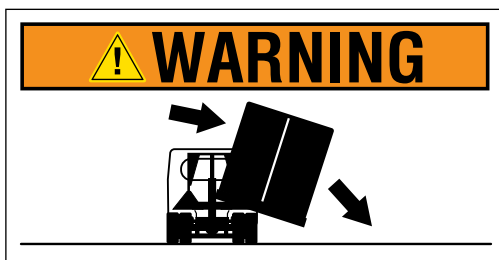
Straight trucks with a pneumatic lifting system installed on their chassis for mounting, demounting, and transporting containers.



Line-haul tractor-trailer that mounts, demounts, and line-hauls two containers at a time to a remote location.

An improperly secured container that falls off a chassis can result in injury or death.

It is the driver's responsibility to make sure that the container is properly locked onto the chassis before each trip.



Be sure all people are clear of the container when mounting and demounting.

Do not operate equipment without proper training from Demountable Concepts or an authorized training provider.

- Review the pre-trip inspection procedure at the back of this manual before every operation and report any defect or problem on your daily driver inspection report.
- Read and understand all safety labels on the equipment.
- Failure to check that chassis is centered and straight when backing under or pulling out is the primary cause of damage.

When demounting bodies:

- Be sure all legs are in proper position with leg pins locked.
- Light plug must be disconnected.
- Bodies must be unlocked.

When transporting the container on chassis:

- The container must be locked in place -- Visually confirm by checking locking hooks and levers before each trip.
- All legs must be stored inside container and locked in place.
- Light plug must be connected.



1. Inside the cab, start the truck.
 - Engage the parking brake.
 - Put the truck in neutral.
 - Air pressure must be 120 PSI for the system to operate.
-



2. Locate and disconnect the light plug on the container near the lifter control box behind the cab.
 - Store it in the storage holder.
 - The green indicator light on the dash will turn off.
-



3. At the lifter control box:
 - Remove the locking key.
 - Push the safety handle inward to release the locking assembly.
 - Lower the locking bar to expose the controls.



4. The container is now disconnected from the chassis.
- The alarm in the cab will flash and make a sound.
 - This will continue until the locking assembly is engaged.



5. **Always operate the front lift assembly first.**
- Inside the control box, set the selector lever to front.
 - Raise the front lift assembly by holding the lift control lever in the up position.



6. Begin setting the legs on the driver-side of the container.

When working with legs:

- ***Always wear gloves for hand protection.***
- ***Never put fingers into the holes in the legs.***



7. Start with the front leg:

- Release the secondary leg locking mechanism.

Pivot it until it is no longer in front of the foot pad.



8. Rotate the handle portion of the leg pin upward and slide it out of the leg and retainer.

Note: The key on the pin's side must be properly aligned to pass through the key-way in the retainer.

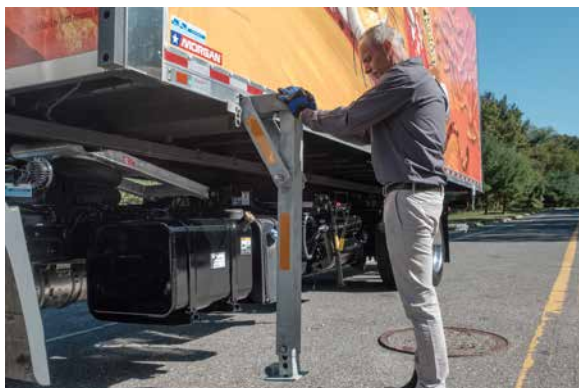


9. Grab the leg by the bottom of the footpad and pull it out all the way.

- Gently lower the leg. **Do not drop it.**
- If necessary, the bottom section of the leg is adjustable.



10. Insert the leg pin through the brace and leg. Swivel the handle down to secure it.



11. Push the leg assembly into the housing until the top brace touches the container side rail.



12. Repeat this procedure for the passenger side front leg.
- Check to be sure all leg pins are fully inserted and securely in place.



13. Return to the control box and move the selector lever to rear.

- Raise the rear lift assembly by holding the lift control lever in the up position.

Note: *Front lift assembly will automatically lower when rear lift is raised.*



14. Set the rear legs:

- Release the secondary leg locking mechanism.

Pivot it until it is no longer in front of the foot pad.



15. Rotate the handle portion of the leg pin upward and slide it out of the leg and retainer.

Note: *The key on the pin's side must be properly aligned to pass through the key-way in the retainer.*



16. Grab the leg by the bottom of the footpad and pull it out all the way.

- Gently lower the leg.
Do not drop it.
- If necessary, the bottom section of the leg is adjustable.



17. Insert the leg pin through the brace and leg. Swivel the handle down to secure it.



18. Push the leg assembly into the housing until the top brace touches the container side rail.

- Repeat this procedure for the passenger-side rear leg.



19. Return to the control box.

- Lower the rear lift assembly by holding the lift control lever in the down position.
- Make sure both lift assemblies are fully lowered.



20. Double check that light plug is disconnected from the container.

- It must be inserted the storage holder on the side of the control box.



21. Return to the cab of the truck.

- Double-check that all people and objects are clear.
- Pull straight out until the chassis is clear of the container.



1. Make sure the locking hooks are in the unlocked and down position.

The in-cab container lock alarm will sound until a container is locked in place.



2. Slowly back the truck straight under the container until the front stops on the lifter contact the front of the container.

- Exit the cab and go to the lifter control box.
- After backing under check alignment.



3. **Always operate the front lift assembly first.**

- Inside the control box, set the selector lever to front.
- Raise the front lift assembly by holding the lift control lever in the up position until the legs are off the ground.



4. Store the front legs. On the driver-side, front leg, rotate the handle portion of the leg pin upward and slide it out to release the leg brace.

Note: The key on the pin's side must be properly aligned to pass through the key-way in the leg and brace.



5. Lift the vertical portion of the leg to a horizontal position and slide the entire leg into the leg housing.

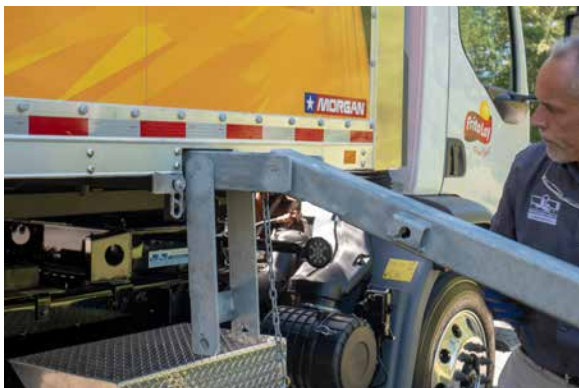


6. Be careful not to pinch your fingers between the leg's footpad and the housing.
 - We recommend making a fist with both hands and pushing against the bottom of the footpad to slide in the leg.



7. Place the leg locking pin through the leg retainer and the leg.

- Engage the secondary locking mechanism by swiveling it in front of the foot pad.



8. Double check to be sure the leg is securely locked in place.

- Repeat this procedure for the passenger-side front leg.



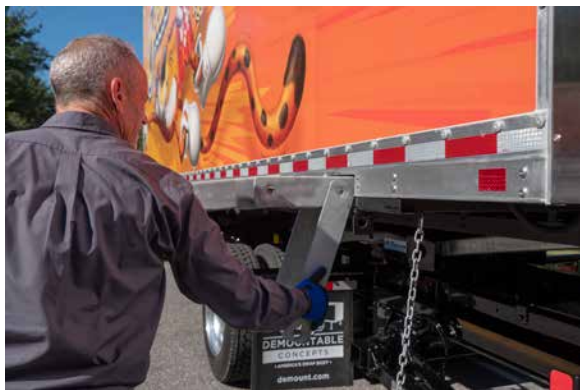
9. Return to the control box and move the selector lever to rear.

- Raise the rear lift assembly by holding the lift control lever in the up position.

Note: Front lift assembly will automatically lower when rear lift is raised.

**10.** Store the rear legs.

- Rotate the handle portion of the leg pin upward and slide it out to release the leg brace.

**11.** Lift the vertical portion of the leg to a horizontal position and slide the entire leg into the leg housing.**12.** Be careful not to pinch your fingers between the leg's footpad and the housing.

- We recommend making a fist with both hands and pushing against the bottom of the footpad to slide in the leg.



- 13.** Place the leg locking pin through the leg retainer and the leg.
- Engage the secondary locking mechanism by swiveling it in front of the foot pad.



- 14.** Double check to be sure the leg is securely locked in place.
- Repeat this procedure for the passenger-side rear leg.



- 15.** Return to the control box.
- Lower the lift assembly by holding the lift controller lever in the down position.
 - Make sure both lift assemblies are fully lowered.



- 16.** Lock the container onto the truck by raising the lifter locking bar.
- The hooks will engage, locking the container to the chassis.



- 17.** The spring-loaded safety handle will move into place.
- Insert the safety locking key.
 - A secondary clip or pad lock may be utilized to ensure the key stays in place.



- 18.** When the locking hooks are engaged the alarm on the dash will stop flashing and sounding.



19. Remove the light plug from the storage holder.

- Plug it into the receptacle on the container.
- The green indicator light on the dash will illuminate.



20. Confirm that the container is locked onto the truck.

- Visually check that the container locking hooks are securely attached to the locking bars on the underside of the container.



21. Return to the cab.

The truck is now ready to be driven.



Each set of hooks must be undamaged, working correctly, and the container must be locked onto the chassis.



All legs must be properly stowed with leg pins secured. The secondary locking mechanisms must be in place.



The light plug must be plugged into the container and lights must be functional.



The in-cab alarm must work properly. When container is unlocked the alarm sounds and flashes.



WARNING! Operation of the airbag lifting device is prohibited if it is not functioning correctly.

WARNING! Repair activities may only be carried out by qualified personnel using suitable tools. Do not work in any way which impairs safety when handling the airbag lifting device.

WARNING! Maintenance work may only be carried out by authorized, trained personnel. These persons must also have read and understood this documentation.

WARNING! Continually check the airbags for damage, as otherwise there is a risk of accidents.

WARNING! If air-bag(s) must be removed (only possible when airbag lifting device is raised), then the airbag lifting device must be braced mechanically to prevent it from lowering.

CAUTION! Malfunctions and unanticipated changes in the airbag lifting device must be rectified without delay.

**NOTICE!**

These specifications apply to normal transport conditions. Where operating conditions are less favorable, the maintenance and inspection intervals must be adapted accordingly.

Chassis-Lift Servicing	Servicing Interval	Activity
Visual inspection of airbag lifting device	Daily/before starting (before each use)	<p>Check the airbag lifting device for cracks, deformation and loose bolted connections and the airbag itself for cuts or pinching.</p> <p>Damaged airbag lifting devices must immediately be taken out of operation and repaired or replaced.</p>
Visual inspection of locking hooks	Daily/before starting (before each use)	<p>Check the hooks and linkage for looseness, damage, bending or other irregularities.</p> <p>Damaged hooks must immediately be taken out of operation and repaired or replaced.</p>
Lubrication of bearings	Every 90 days	<p>Lubricate the bearings on the frame using the grease nipples and also grease the lifting pads two times (2X).</p> <p>Normal, commercially available and water-repellent grease can be used for lubrication.</p>

Chassis-Lift Servicing	Servicing Interval	Activity
Wear inspections of airbag, bearing.	During vehicle inspection	<p>At regular intervals, check the wearing parts, in particular the airbag and bearing. To do this, raise the airbag lifting device to its maximum height without any load.</p> <p>If there are any visible signs of cuts, pinching or abrasion that could have damaged the airbag, the bag must immediately be replaced.</p>
Drain air bag	Monthly	<p>With the body removed, raise the air lift to full height to increase pressure. Open manual drain valve on locking frame.</p>

Daily Maintenance Check List

- ☐ Check warning system
- ☐ Check that locking lever is in good working order

90-Day Maintenance Check List

- ☐ Check all truck lights
- ☐ Remove body from truck and power wash truck chassis
- ☐ Grease all locking shafts
- ☐ Grease locking lever
- ☐ Check measurements of front hooks
- ☐ Check measurements of rear hooks
- ☐ Adjust front and rear hooks if required
- ☐ Check body stops



DEMOUNTABLE CONCEPTS

• AMERICA'S SWAP BODY •

**Training videos
available online at
demount.com/fl-training**



**Air-Swap
Straight Truck**

Contact Info: US, Canada & Mexico

Toll Free: (844) 364-4021

Local: (856) 863-0900

Fax: (856) 863-6704

E-mail: sales@demount.com

Web: demount.com