

# ***WASHTENAW COUNTY STREET SURVIVAL GUIDE***

---

This guide is for anyone who needs help finding any type of resource. Access to food, medical needs, homelessness, etc. Use it as you see fit.



# TABLE OF CONTENTS

---



1

Food - pg 3 -8  
Hot meals  
Ann arbor & Ypsilanti Food pantries

---



2

Shelter - pg 9-15  
Emergency shelter & legal aid  
Showers, laundry, & camp supplies  
Clothing & household items

---



3

Medical - pg 16-22  
Clinics & dental  
Mental health & Drug/alcohol help

---



4

Specific People Groups - pg 23-27  
Veterans & Women  
Youth & LGBTQ+

---



5

All Other Resources - pg 28-36  
Employment & Childcare  
Community centers & Libraires  
Transportation & Free Phones  
Street solidarity & mutual aid



# FOODS

---

## HOT MEALS:

- Robert J. Delonis Center
  - 312 W. Huron Street, Ann Arbor, MI, 48103
  - 734-662-2829 & [www.annarborshelter.org](http://www.annarborshelter.org)
  - Lunch: M-F 12-1pm & Sat-Sun 2:30-4:30
  - Dinner: M-F 5:00-6:30
- St. Andrews Episcopal Church
  - 306 N. Division St, Ann Arbor, MI, 48103
  - 734-663-0518 & [www.breakfastatstandrews.org](http://www.breakfastatstandrews.org)
  - Breakfast: 7:30-8:30am, 7 days a week
- Hope Clinic
  - 518 Harriet St, Ypsilanti, MI, 48197
  - 734-484-2989 & [www.thehopeclinic.org](http://www.thehopeclinic.org)
  - Every day except Wednesday from 5-6pm



# ANN ARBOR FOOD PANTRIES:

---

- Northside Community Center (CSS)
  - 809/815 Taylor St, Ann Arbor, MI, 48105
  - 734-662-4462 & [www.canwashtenaw.org](http://www.canwashtenaw.org)
  - Hours: Tuesday 2-5:30pm, Thursday 10-2:30pm
  - 2nd & 4th Saturday of every month from 10-12:30pm
- The Back Door Food Pantry (St. Clare Episcopal Church)
  - 2309 Packard St, Ann Arbor, MI, 48103
  - 734-721-2976 & [www.backdoorfoodpantry.org](http://www.backdoorfoodpantry.org)
  - Hours: Thursday 4-7pm
- Trinity Lutheran Church
  - 1400 W Stadium Blvd, Ann Arbor, MI, 48103
  - 734-662-4419 & [www.trinitya2.org](http://www.trinitya2.org)
  - Hours: Friday 10-12pm only during the summer
  - They have many other resources you should check out too!
- Journey of Faith Church
  - 1900 Manchester rd, Ann Arbor, MI, 48104
  - 734-971-4245 & [www.journeyoffaitha2.org](http://www.journeyoffaitha2.org)
  - Currently they are taking a break, but through their other programs you may be able to obtain a bit of food!
- Ann Arbor Second Baptist Church
  - 850 Red Oak rd, Ann Arbor, MI, 48103
  - 734-663-9369 ext. 7
  - Hours: Friday 12-1pm
  - Bring I.D & 1 visit per month
  - on weeks where a holiday occurs, please call for schedule
- Jewish Family Service
  - 2245 S. State St, Ann Arbor, MI, 48104
  - 734-769-0209

- Hours: M–Thur 9–5pm & Friday 9–3pm
  - Pickup on Thursday 11–4pm
  - Call for an appointment at a different time
  - For delivery must be 60+ & provide proof
- Bryant Community Center
  - 3 West Eden Ct, Ann Arbor, MI, 48108
  - 734-477-0292 & [www.canwashtenaw.org/bryant](http://www.canwashtenaw.org/bryant)
  - Hours: Mon & Thur 10–3pm, Friday 10–2pm
  - Lunch meals pickup Mon & Thur after 11 am
    - I.D and proof of residence needed
- Salvation Army
  - Note: Salvation Army is an actively anti-LGBTQ organization and this may not be a safe choice for LGBTQ+ people
  - 100 Arbana Dr, Ann Arbor, MI, 48103
  - 734-668-8353 & [www.centralusa.salvationarmy.org/washtenaw/](http://www.centralusa.salvationarmy.org/washtenaw/)
  - Hours: Tuesday & Thursday 9:30–11:30am & 1–3pm

## BONUS RESOURCE:

Here is a great resource to always find the nearest and update information on food pantries!

Visit <https://www.foodgatherers.org/foodresources/>



# ***YPSILANTI FOOD PANTRIES:***

---

- **Beautiful Gate Church**
  - 1225 Congress St, Ypsilanti, MI, 48197
  - 734-484-9700 & [www.beautifulgatechurch.com](http://www.beautifulgatechurch.com)
  - Hours: Saturday 12-2pm
- **Hope Medical Clinic**
  - 518 Harriet St, Ypsilanti, MI, 48197
  - 734-484-2989 & [www.thehopeclinic.org/get-food](http://www.thehopeclinic.org/get-food)
  - Hours: Tues 12:30-2:30pm, Wed 4-6pm, Fri 9:30 -11:30pm, & Sat 10-11:30pm
    - This is for appointment only pantry
  - 454 Harriet St Farm stand
    - no appointment needed
    - Hours: Mon 9:30-12pm, Thurs 12:30-3pm, & Sat 12-1pm
  - Delivery is also available!
- **Bethesda Bible Church**
  - 1800 Huron St, Ypsilanti, MI, 48197
  - 734-483-7279
  - Hours: 2nd & 4th Wed of the month 9-1:30pm
    - call for an appointment
    - one visit per month
- **Calvary Bible Church**
  - 8318 Carpenter rd, Ypsilanti, MI, 48197
  - 734-434-4044 & [www.calvary-bible.info](http://www.calvary-bible.info)
  - Hours: 2nd & 4th Sat of the month 10-12pm
- **Christian Love Fellowship**
  - 1601 Stamford, Ypsilanti, MI, 48198
  - 734-483-7967 & [www.clfmi.church](http://www.clfmi.church)
  - Hours: 4th Saturday of the month 10:30-12pm
    - Pickup only

- Community Church of God
  - 565 Jefferson St, Ypsilanti, MI, 48198
  - 734-483-1955 & [www.communitychurchofgod.net/foodpantry](http://www.communitychurchofgod.net/foodpantry)
  - Hours: 1st 3rd & 5th Friday of the month, 12-1:30pm
- Emmanuel Lutheran Church
  - 201 N River, Ypsilanti, MI, 48198
  - 734-482-7121 & [www.emmanuelypsi.org](http://www.emmanuelypsi.org)
  - Hours: Wed & Thurs 3-3:45pm
- Christian Tabernacle Church
  - 983 E Michigan Ave, Ypsilanti, 48198
  - 734-480-4470 & [www.ctbcypsi.com](http://www.ctbcypsi.com)
  - Hours: Last Sat of the month at 9am
- Grace Fellowship Church
  - 1301 S Harris, Ypsilanti, MI, 48198
  - 734-480-0077
  - Hours: Every Sat at 10am
    - Bring I.D
- Joyful Treats Community Development Corp.
  - 103 Ecorse Rd, Ypsilanti, MI, 48198
  - 734-485-4367 & [www.anewjoyfultreats.com](http://www.anewjoyfultreats.com)
  - Hours: Every Tues 11-1pm
  - Delivery available
- Messias Temple Church
  - 200 Harriet St, Ypsilanti, MI, 48197
  - 734-483-8092 & <https://messiastemple.org>
  - Hours: Tues 11-12:30pm
  - Sometimes hot meals are available
- SOS Community Services
  - 114 North River St, Ypsilanti, MI, 48197
  - 734-485-8730 & [www.soscs.org/food-pantry](http://www.soscs.org/food-pantry)
  - Hours: Tues 1-6:30pm & Wed 9-1pm
  - Appointment needed

- St. John the Baptist Church & St. Vincent De Paul
  - 411 Florence, Ypsilanti, MI, 48197
  - 734-483-3360 & [www.ypsilanticatholic.com](http://www.ypsilanticatholic.com)
  - Hours: Thurs 6-7:30pm
- Victorious Life Church of God
  - 860 E Clark Rd, Ypsilanti, MI, 48198
  - 734-482-4293 & [www.vlcog.org](http://www.vlcog.org)
  - Hours: 2nd & 3rd Tues 6-7:30pm
- Washtenaw County Public Health
  - 555 Towner Rd, Ypsilanti, MI, 48198
  - 734-544-6700 & [www.washtenaw.org](http://www.washtenaw.org)
  - Hours: 3rd Wed of the month 2-3:30pm
- Word of Deliverance Church
  - 1005 Midway Rd, Ypsilanti, MI, 48198
  - 734-757-4498
  - Hours: Second Tues of the month 11:30-1pm
- Ypsilanti Church of Christ
  - 1070 E Cross St, Ypsilanti, MI, 48198
  - 734-483-1864
  - Hours: 3rd Sat of the month at 11am
- Peace House
  - 706 Davis, Ypsilanti, MI, 48198
  - 734-754-0648
  - Hours: Thursdays boxes of groceries available for pick up or delivery
  - Sunday Brunch 10-1pm





# ***SHELTER***

---

## **EMERGENCY SHELTERS:**

- Shelter Association of Washtenaw County (Delonis Center)
  - 312 W Huron St, Ann Arbor, MI, 48103
  - 734-662-2829 & [annarborshelter.org](http://annarborshelter.org)
  - Hours: Open 24/7
  - Open to anyone facing or experiencing homelessness
  - Residential Program: Temporary shelter, intensive case management, help finding income & saving for affordable housing. Has access to all services and programs.
  - Non-residential Program: Intensive case management for those not seeking shelter. Other immediate and long term care available.
  - Critical Time Intervention: short term case management, connections to better quality of life and reduce risk of homelessness again for people who just found housing
  - Winter Services: (Mid-November to March) a warming site & rotating shelter is available
- Housing Access for Washtenaw County (HAWC)
  - 100 Arbana Dr, Ann Arbor, MI, 48103
  - 734-961-1999 & [www.housingaccess.net](http://www.housingaccess.net)
  - Hours: Mon-Fri 8:30-5pm
  - Open to anyone facing or experiencing homelessness
  - Central intake available
  - Information on housing agencies & referrals



- Salvation Army Staples Family Center Shelter
  - Note: Salvation Army is an actively anti-LGBTQ organization and this may not be a safe choice for LGBTQ+ people
  - 3660 Packard, Ann Arbor, MI, 48108
  - 734-761-7750 & [www.salvationarmy.org](http://www.salvationarmy.org)
  - Open to anyone & families
  - Daily meals are provided
  - Case workers assigned to each resident
  - Support groups available
- Alpha House
  - 4290 Jackson Rd, Ann Arbor, MI, 48103
  - 734-822-0220 & [www.alphahouse-ihn.org](http://www.alphahouse-ihn.org)
  - Houses families
  - Daily meals & hygiene products provided
  - Help finding affordable housing, employment, education, & more

# SHOWER, LAUNDRY, CLOTHING, & CAMP/HOUSE SUPPLIES

---

- Journey of Faith
  - 1900 Manchester Rd, Ann Arbor, MI, 48104
  - 734- 971-4245 & [www.journeyoffaitha2.org](http://www.journeyoffaitha2.org)
  - Hours:
    - Shower & laundry appointment needed
    - Mon-Fri 10-1:30pm
    - clothing and meals will be given when available as well
    - Cold weather care kits available upon request
    - School and backpack supplies available upon request
- Hope Center
  - 518 Harriet St, Ypsilanti, MI, 48197
  - 734-484-2989 & [www.thehopeclinic.org](http://www.thehopeclinic.org)
  - Hours: appointment needed to do laundry for free
  - Call 734-961-3124 to set up a time
- Peace House
  - 706 Davis, Ypsilanti, MI, 48198
  - 734-754-0648 & [www.missiona2.org/peace-house-ypsi.html](http://www.missiona2.org/peace-house-ypsi.html)
  - Hours: Appointment needed for everything
  - If you do not have the ability to call you can drop by Mon, Wed, or Fri 12-4pm, but may not be able to be accommodated at that time
  - Showers, laundry, and free store are all available
- Mercy House
  - 805 W Huron St, Ann Arbor, MI, 48103
  - 734-678-9818 & [www.missiona2.org/mercy-house.html](http://www.missiona2.org/mercy-house.html)
  - Hours: Mon & Wed 6-9pm & Sat 10-2pm
  - Showers, laundry, and emergency shelter available for free

- Shelter Association of Washtenaw County
  - 312 W Huron St, Ann Arbor, MI, 48103
  - 734-662-2829 & [www.annarborshelter.org](http://www.annarborshelter.org)
  - Hours: Non-residential laundry Tues, Wed, Fri 1:30-4:30pm
  - Non-residential showering everyday 5-7:30pm
- Emmanuel Lutheran Church
  - 201 N River, Ypsilanti, MI, 48198
  - 734-482-7121 & [www.emmanuelypsi.org](http://www.emmanuelypsi.org)
  - Hours: Wed 9-10:30am, free bag of clothes
- House by the Side of the Road
  - 2051 S State St, Ann Arbor, MI, 48104
  - 734-769-4085 & [www.housebythesideoftheroad.org](http://www.housebythesideoftheroad.org)
  - Hours: Mon-Fri 10-2pm
  - clothing and small household items all available for free
- Dress for Success
  - 5361 McAuley Dr #1125, Ypsilanti, MI, 48198
  - 734-712-0517 & [michigan.dressforsuccess.org](http://michigan.dressforsuccess.org)
  - Services included:
    - Suiting: Once an interview is scheduled, gain a referral to local shop
    - Guidance & support for upcoming interview
    - Employment retention: Programs for giving strategies to grow as a professional
    - Job training: Help support & motivate women to eliminate obstacles in the way of being hired
- Kiwanis
  - 100 N Staebler Rd Suite C, Ann Arbor, MI, 48103
  - 734-368-9738 & [www.a2kiwanisfoundation.org](http://www.a2kiwanisfoundation.org)
  - Hours: Appointment needed to be set up by case manger to shop for needed items for low costs.

- House N2 Home
  - 5361 McAuley Dr Suite 1125, Ypsilanti, MI 48197
  - www.housen2home.org
  - Hours: Case manger needs to reach out once you have secured some type of housing
  - They will work with you to get you needed household items for free
- Ypsilanti Community Schools Clothes Closet
  - Chappelle Elementary school: 111 S Wallace Blvd, Ypsilanti, MI, 48197
  - 734-244-2443
  - Hours: appointment only.



# DOMESTIC VIOLENCE HELP:

---

- Safehouse
  - 4100 Clark Rd, Ann Arbor, MI, 48105
  - 734-955-5444 & [www.safehousecenter.org](http://www.safehousecenter.org)
    - Doubles as 24 hour crisis line
  - Hours: Mon-Fri 9-5pm
  - Emergency shelter for 35 days
  - Daily meals & everyday products provided
  - Each resident is assigned an advocate to assist in finding other help & resources
  - Support groups
    - Sexual assault survivor Mon 6-7:30pm
    - Spanish speaking support Wed 6-7:30pm
    - Domestic violence Thurs 6-7:30pm
  - All services are free
  - Just be a Washtenaw County resident

# HOUSING SUPPORT:

---

- Habitat for Humanity
  - 950 Victors Way, Suite 50, Ann Arbor, MI, 48108
  - 734-677-1558 & [www.h4h.org](http://www.h4h.org)
  - Currently closed but can be reached by phone or email
  - Home Ownership Program
  - Works with potential home-owners to find affordable housing
- Legal Housing Center of South Central Michigan
  - 15 S Washington St, Ypsilanti, MI, 48197
  - 734-665-6181 & [www.lsscm.org](http://www.lsscm.org)
  - Hours: Mon-Fri 9-5pm
  - Helping individuals & families facing imminent loss of shelter. Can offer help to low-income folks in eviction & foreclosure cases
- Fair Housing Center of Southeast & Mid-Michigan
  - 877-979-3247 & [www.fhcmichigan.org](http://www.fhcmichigan.org)
  - Hours: Mon-Fri 9-5pm
  - A nonprofit dedicated to investigating complaints of illegal housing discrimination
  - Email [complaints@fhcmichigan.org](mailto:complaints@fhcmichigan.org) or call for help with your case

# ***MEDICAL SERVICES:***

---

- Family Life Services

- Note: this is an anti-choice provider who *does not* provide and may dissuade you from abortion services
- 840 Maus Ave, Ypsilanti, MI, 48198
- 734-434-3088 & [www.flscenter.com](http://www.flscenter.com)
- Hours: Mon & Wed 12:30-5pm & Fri-10-2pm
- Services offered:
  - Pregnancy testing
  - Ultrasounds
  - Abortion/adoption information
  - Infant/maturnaity items when available
  - Help finding other resources

- Hope Center/Clinic

- 518 Harriet St, Ypsilanti, MI, 48197
- To become a new patient call 734-481-0111
- [www.thehopeclinic.org/medical-care](http://www.thehopeclinic.org/medical-care)
- Hours: Tues & Thurs 9-5 pm, Wednesday 12-4pm & 5:30-8pm, 2nd & 4th Sat of the month 8:30-12pm
- Services offered:
  - Basic medical services
  - Social workers - by appointment & walk-ins
  - Baby items available sometimes
  - Flu shots
  - Other specialists can be worked with case by case



- Packard Health (3 Locations)
  - [www.packardhealth.org](http://www.packardhealth.org)
  - Location 1: 2650 Carpenter Road, Ann Arbor, MI 48108
    - 734-971-1073
    - Hours: Mon- Fri 8-12pm & 1-5pm Sat 8-12pm (in-person appointments only)
  - Location 2: 1915 Pauline Blvd, Ann Arbor, MI, 48103
    - 734-926-4900
    - Hours: Mon- Fri 8-12pm & 1-5pm
  - Location 3: 200 Arnet St, Suite 150, Ypsilanti, MI, 48198
    - 734-985-7200
    - Hours: Mon- Fri 8-12pm & 1-5pm
  - Services offered:
    - Primary Care for the Whole Family
    - Women's Health
    - Prenatal Care
    - Behavioral Health
    - Chronic Disease Management
    - Addiction Treatment Services
    - Nutritional Therapy
    - Insurance Enrollment Assistance
    - Food, Medication, Transportation Assistance
    - Translation Services

## **Bonus Resource:**

Applying for Medicaid could help you receive the medical care you need. You can apply for Medicaid, Healthy Michigan Plan, MiChild, or Healthy Kids through MI Bridges ([newmibridges.michigan.gov/](http://newmibridges.michigan.gov/)), then selecting Apply for Benefits. Children with special health care needs should apply for Children's Special Healthcare Services (CSHCS).

# DENTAL CARE:

---

- Community Dental Center
  - 406 N Ashley St, Ann Arbor, MI, 48104
  - 734-998-9640 & [www.dent.umich.edu/patient-care/community-dental-center](http://www.dent.umich.edu/patient-care/community-dental-center)
  - Hours: Mon-Thurs 8-5pm & Fri 8-1pm
  - Full dental services available to kids & adults
- Hope Dental Clinic
  - 518 Harriet St, Ypsilanti, MI, 48197
  - 734-484-2989 & [www.thehopeclinic.org](http://www.thehopeclinic.org)
  - Hours: Mon-Thurs 9-5pm
  - General preventative care available
- U of M School of Dentistry
  - 1011 N University Ave, Ann Arbor, MI, 48109
  - 734-763-6933 & [www.dent.umich.edu](http://www.dent.umich.edu)
  - Hours: Mon-Fri 7:30-5pm
  - Dental cleaning done by closely supervised faculty members just \$62 roughly
- Washtenaw Dental Clinic
  - 111 N Huron Street, Ypsilanti, MI, 48197
  - 877-313-6232 & [www.washtenaw.org](http://www.washtenaw.org)
  - Hours: Mon-Fri 8-4:30pm
  - All dental services available at sliding scale fee



# MENTAL HEALTH:

---

- Community Mental Health
  - 555 Towner St, Ypsilanti, MI, 48198
  - 734-544-3000 & [www.washtenaw.org](http://www.washtenaw.org)
  - Hours: Mon-Fri 8:30-5pm
  - Services offered:
    - 24/7 access to services & crisis line
    - 24/7 access to information and referral regarding behavioral health and substance abuse services
    - Inpatient authorization for Medicaid and uninsured individuals
    - Suicide risk assessment
    - Petition for involuntary hospitalization and pick up order services
    - Crisis stabilization, support, & planning
    - Crisis residential Services
      - 6 beds open 24/7
      - Therapeutic supports
      - Nursing & behavioral services
      - Case management
      - Medication management, stabilization & education
    - Medicaid accepted only

# DRUG & ALCOHOL TREATMENT:

---

- Dawn Farms
  - 6633 Stony Creek Rd, Ypsilanti, MI, 48197
  - 734-485-8725 & [www.dawnfarm.org](http://www.dawnfarm.org)
  - Hours: Open 24/7
  - Long term residential
    - 2 locations, this one & 544 North Division Street, Ann Arbor, MI, 48104
    - Public funding for those who qualify
    - 90-120 day stays
  - Transitional Housing
    - Houses & apartments across Ann Arbor & Ypsilanti
  - Out patient services
    - Group & individual therapy
    - Case management
  - Community corrections outreach
    - Both in jail & and out patient programs
- Spera Detox Recovery
  - 502 West Huron, Ann Arbor, MI, 48104
  - 734-669-8265 & [www.dawnfarm.org/patient-programs/detoxification/](http://www.dawnfarm.org/patient-programs/detoxification/)
  - Hours: Open 24/7
  - Average stay is 5 days
  - little to no fees or costs
  - safe place to stay
- Home of New Vision
  - 3115 Professional Dr, Ann Arbor, MI, 48104
  - 734-975-1602 & [www.homeofnewvision.org](http://www.homeofnewvision.org)
  - Hours: Mon-Fri 9-5pm

- Withdrawal Management
- In and out patient treatment
- Recovery Housing
  - Peer-to-peer recovery support & 12 step or other recoverybased meetings
  - Develop and practice skills for living a clean and healthy lifestyle
- Women's specialty program
  - Group and individual therapy
  - Case management
  - Peer Recovery Coach Services
  - Childcare and transportation to treatment
  - Linkages to community resources
  - Linkages to prenatal care
  - Integrated Services to address mental health needs.
  - Education regarding prenatal, childbirth, substance use disorders, and pregnancy education
  - Available to anyone in Washtenaw county with little to no income, medicaid accepted
  - 18 years or older
- Home of New Vision Engagement Center
  - 103 Arnet St, Ypsilanti, MI, 48197
  - 734-879-1101 & [www.homeofnewvision.org](http://www.homeofnewvision.org)
  - Hours: Open 24/7
  - Safe space for a hot meal, shower, and talking
  - Alternative to emergency room
  - 8 beds, first come first serve
  - No insurance needed
  - 18 years or older

- Alano Club
  - 995 N Maple Rd, Ann Arbor, MI, 48103
  - 734-668-8138 & [www.washtenawalano.club](http://www.washtenawalano.club)
  - Hours: Sat-Mon 8-9pm, Thurs & Tues 9-9pm, Wed 10-9pm, Fri 10-10pm
  - Recovery meetings everyday
- Friends of Little House Recovery Center
  - 802 N River St, Ypsilanti, MI, 48198
  - 734-219-5051 & [folhrc.wixsite.com/website](http://folhrc.wixsite.com/website)
  - Hours: Mon-Fri there are 4 meetings a day at 9:30am, 12:00pm, 5:30pm, and 7:30pm, Sat 9:30am men's meeting, 12:00pm, 5:30pm and Sunday 12:00pm & 5:00pm
  - Meeting rooms for 12 Step and recovery oriented programs like Alcoholics Anonymous, Narcotics Anonymous, Gamblers Anonymous, Overeaters Anonymous, and many other programs provided
- Methadone Clinic
  - 522 S Maple Rd, Ann Arbor, MI, 48103
  - 734-773-1785 & [www.ctcprograms.com](http://www.ctcprograms.com)
  - Hours: Mon-Fri 6-2pm
  - Services included:
  - Counseling
  - Methadone, suboxone, buprenorphine, & vivitrol Maintenance
  - Most insurances accepted
- Alcoholics Anonymous, Huron Valley Area Intergroup
  - 31 S Huron St, Ypsilanti, MI, 48197
  - 734-482-0707 & [www.hvai.org](http://www.hvai.org)
  - Hours: Tues-Fri 1-6pm
  - Meeting locator on their website
  - Meeting phone number and help 734-482-5700
  - Other resources also available!

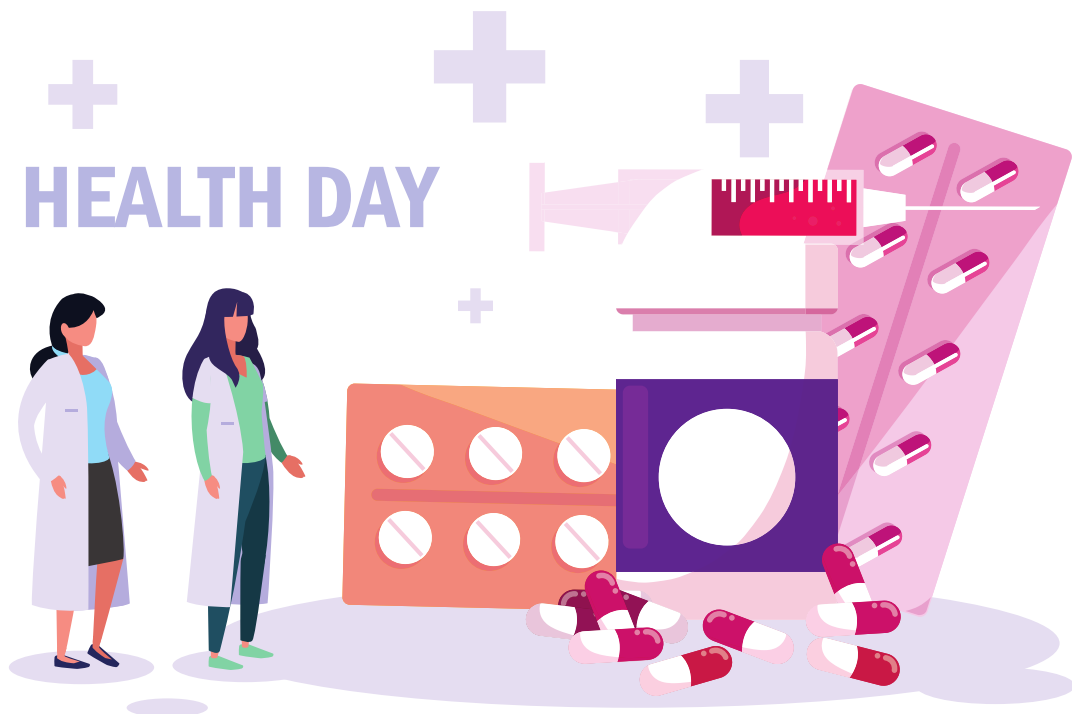
# *Specific People Groups*

---

## **WOMEN'S HEALTH:**

- The Women's Center of Southeast Michigan
  - 1100 Victors Way suite #10, Ann Arbor, MI, 48198
  - 734-973-6779 & [www.womenscentersemi.org](http://www.womenscentersemi.org)
  - Hours: Mon-Fri 9-5pm
  - Services included:
    - Support groups & counseling
    - Financial & job coaching
    - Therapist or divorce specialist available
    - Family law attorney
    - Insurance or sliding scale available
- Planned Parenthood
  - [www.plannedparenthood.org](http://www.plannedparenthood.org)
  - 2 locations:
    - 2370 W Stadium Blvd, Ann Arbor, MI, 48103
    - 734-929-9480 & Hours: Mon 10:30-5pm & Tues-Fri 9-5pm
    - 3100 Professional Dr, Ann Arbor, MI, 48104
    - 734-973-0710 & Hours: Mon 10:30-4pm, Tues 9-5pm & Wed-Fri 8-4pm

- Services included:
  - Pregnancy Testing & services
  - Abortions
  - Birth control
  - Morning after pill
  - STD testing, treatment, & vaccines
  - LGBTQ+ services
  - HIV services
  - Men's healthcare too!
  - Womens healthcare





# VETERANS:

---

- Veterans Affairs
  - 2155 Hogback Rd, Ann Arbor, MI, 48105
  - 734-973-4540 & [www.washtenaw.org](http://www.washtenaw.org)
  - Hours: Mon-Thurs 1-5:30pm & appointments
  - Help finding services such as
    - Disability Compensation
    - Education Benefits & Financial Assistance
    - Housing, utilities, food, & Transportation
    - Funeral and Burial Reimbursements (Federal & Local)
    - Home Loan Guarantees
    - VA Life Insurance, Health Care, & pension
- Veteran Haven of Hope House
  - 809 Henry Street, Ann Arbor, MI, 48104
  - 734-668-8353 & [www.michiganlegalhelp.org](http://www.michiganlegalhelp.org)
  - Free 2 year transitional housing for veterans
  - Continuing education available
  - Weekly meetings with case workers
- VA Medical Center
  - 2215 Fuller Rd, Ann Arbor, MI, 48105
  - 734-769-7100 & [www.va.gov](http://www.va.gov)
  - Offers physical & mental treatment

# LGBTQIA+:

---

- Corner Health Center
  - 47 N Huron St, Ypsilanti, MI, 48197
  - 734-484-3600 & [www.cornerhealth.org](http://www.cornerhealth.org)
  - Hours: Mon, Thurs, Fri 9-5pm, Tues 9-6pm & Wed 1-5pm
    - appointments needed for services
- Jim Toy Community Center
  - 319 Braun Ct, Ann Arbor, MI, 48104
  - 734-995-9867 & [www.jimtoycenter.org](http://www.jimtoycenter.org)
  - A relaxed, fun space for LGBTQ+ people to find groups they belong too and learn how to advocate for themselves and others. Check their website for meetings, groups, and events!
- Safehouse
  - 4100 Clark Rd, Ann Arbor, MI 48105
  - 734-995-5444 & [www.safehousecenter.org](http://www.safehousecenter.org)
  - There is an LGBTQ+ meeting for sexual assault survivors on Tuesday's 6-7:30pm
  - It's a 4 week period group
  - Checkout their website for more resources and groups!



# YOUTH:

---

- Ozone House
  - 1600 N Huron River Dr, Ypsilanti, MI, 48197
  - 734-662-2222 & [www.ozonehouse.org](http://www.ozonehouse.org)
  - Hours: Open 24/7
  - Great place with tons of helpful resources like
    - counseling
    - safe place to stay
    - text & call lines
    - job training or schooling opportunities
    - help repairing family relations
  - Insurance is needed for things like counseling
  - Also you cannot be pregnant or have children
  - Must be sober during stays or they will help refer you out to a different program for help
- Neutral Zone
  - 310 E Washington St, Ann Arbor, MI, 48104
  - 734-214-9995 & [www.neutral-zone.org](http://www.neutral-zone.org)
  - Hours: Mon- Thurs 2:30-8pm & Fri 2:30-6pm
  - Offers more than 20 programs for youths in areas of music, technology, media & arts, education, leadership, & so much more.
  - School year programs also available
- Washtenaw Camp Placement
  - 3135 S State St # 350D, Ann Arbor, MI 48108
  - 734-971-4537 & [www.washtenawcampplacement.org](http://www.washtenawcampplacement.org)
  - Apply for your child to attend a 1-2 week summer camp for free!

# ***ALL OTHER RESOURCES:***

---

## **EMPLOYMENT:**

- Michigan Works
  - 304 Harriet St, Ypsilanti, MI, 48197
  - 734-714-9814 & [www.mwse.org](http://www.mwse.org)
  - Hours: Tues 8-7pm Mon & Wed-Fri 8-5pm
  - Striving for helping those seeking jobs gain them through many resources such as
    - direct line to unemployment offices or help building resume
    - Variety of adult & teen programs
    - Help with car repairs or gas money
    - Helps train so you can move up in jobs
    - Education or tuition assistance
    - Job fairs twice a month (1st & 3rd Thursday)
    - There are many more resources so just check out their website for more details
    - All services are free

# ***COMMUNITY CENTERS:***

---

- Department of Human Services
  - 22 Center St, Ypsilanti, MI, 48198
  - 734-481-2000 & [www.michigan.gov](http://www.michigan.gov)
  - Hours: Mon-Fri 8-5pm
  - Manages food stamp program to supplement incomes of families or individuals in need
- SOS Community Services
  - 114 North River, Ypsilanti, MI, 48198
  - 734- 485-8730 & [www.soscs.org](http://www.soscs.org)
  - Hours: Mon 9-1pm & Thurs & Fri 9-4pm
  - Resources for parents, kids, homelessness
  - Help finding any type of assistance you need
  - Help applying for transportation/bus fare reductions and so much more!
- Jim Toy Community Center
  - This is discussed in LGBTQIA+ section! Check them out at [www.jimtoycenter.org](http://www.jimtoycenter.org)
- Ozone Hosue
  - This is mentioned in the Youths section! Check them out at <https://www.ozonehouse.org>
- Peace House
  - This is discussed in Ypsilanti Food pantries & showers, laundry, clothing, & camp/house supplies sections! Check them out [www.missiona2.org/peace-house-ypsi.html](http://www.missiona2.org/peace-house-ypsi.html)

- Corner Health Center
  - This is mentioned in LGBTQIA+ section! Check them out at [www.cornerhealth.org](http://www.cornerhealth.org)
- Peace Neighborhood Center
  - 1111 N Maple Rd, Ann Arbor, MI, 48103
  - 734-662-3564 & [peaceneighborhoodcenter.org](http://peaceneighborhoodcenter.org)
  - Services include:
    - Family or individual counseling & enrichment
    - College & career preparations
    - summer day camps & after school programs
    - advocacy & emergency assistance/shelter
- Mercy House
  - This is mentioned in shower, laundry, clothes, & camp/house supplies section! Check them out at [www.missiona2.org/mercy-house.html](http://www.missiona2.org/mercy-house.html)
- Ann Arbor Community Center
  - 625 N Main St, Ann Arbor, MI 48104
  - 734-662-3128 & [annarbor-communitycenter.org](http://annarbor-communitycenter.org)
  - Many resources & programs geared towards socio-economically disadvantaged children, teens, adults, & families
  - Some programs include
    - Summer Learning programs
    - Caring closets in schools
    - Thanksgiving & christmas help
    - Emergency help
    - Check out their website for other resources!
- Friends in Deed
  - 1196 Ecorse Rd, Ypsilanti, MI, 48198
  - 734-484-4357 & [www.friendsindeedmi.org](http://www.friendsindeedmi.org)
  - Hours: Mon-Fri 9:30-2:30pm
  - Furniture Line at 734-484-7607
    - Help obtaining furniture

- Help Line at 734-484-4357
  - Transportation help
  - Help preventing utilities being turned off
  - Many other resources available
- Michigan Ability Partners
  - 3810 Packard St Ste. 260, Ann Arbor, MI, 48108
  - 734-975-6880 & [www.mapagency.org](http://www.mapagency.org)
  - Hours: Mon-Fri 8:30-4:30pm
  - Services include:
    - Representative pay help
    - Job development & coaching
    - Housing support
    - Check out their website for more resources!



# ***CHILDCARE:***

---

- Child Care Network - Family Support Program
  - 3941 Research Park Dr, Ann Arbor, MI 48108
  - 734-975-1840 & [www.childcarenetwork.org](http://www.childcarenetwork.org)
  - Hours: Mon-Fri 8-4pm
  - Services include:
    - Family Support program: Child care assistance to low income families
    - Great Quality Start: Classes & resources on early childhood development and how to best help your kid
    - Community Programs: many training programs or other resources for help with childcare
- YMCA Ypsilanti Child Development Center
  - 111 S Wallace Blvd, Ypsilanti, MI, 48197
  - 734-661-8045 & [www.annarborymca.org/camps-and-childcare/childcare/ypsicdc/](http://www.annarborymca.org/camps-and-childcare/childcare/ypsicdc/)
  - Hours: 7:30-6:30pm
  - For children 18 months to 5 years old
  - Financial assistance is accepted
  - No drop in care, must be signed up prior
- Destiny & Purpose Community Outreach
  - 127 N Washington St, Ypsilanti, MI, 48197
  - 877-832-1277 & [www.dapco.org](http://www.dapco.org)
  - Baby & Parent in Need Program: Call to set up appointment to have baby essentials delivered to a public location. Use ext. 103 with their phone number



# LIBRARIES:

---

- Ann Arbor District Downtown Library
  - 343 S 5th Ave, Ann Arbor, MI, 48104
  - 734-327-4200 & [www.aadl.org](http://www.aadl.org)
  - Hours: Mon-Sun 10-8pm
- Malletts Creek Branch
  - 3090 E Eisenhower Pkwy, Ann Arbor, MI, 48108
  - 734-327-4200 & [www.aadl.org](http://www.aadl.org)
  - Hours: Mon-Sun 10-8pm
- Pittsfield Branch
  - 2359 Oak Valley Dr, Ann Arbor, MI, 48103
  - 734-327-4200 & [www.aadl.org](http://www.aadl.org)
  - Hours: Mon-Sun 10-8pm
- Traverwood Branch
  - 3333 Traverwood Dr, Ann Arbor, MI, 48105
  - 734-327-4200 & [www.aadl.org](http://www.aadl.org)
  - Hours: Mon-Sun 10-8pm
- Westgate Branch
  - 2503 Jackson Ave, Ann Arbor, MI, 48103
  - 734-327-4200 & [www.aadl.org](http://www.aadl.org)
  - Hours: Mon-Sun 10-8pm
- Washtenaw County Library
  - 4135 Washtenaw Ave, Ann Arbor, MI, 48108
  - 734-973-4350
  - Hours: Mon-Fri 8:30-5pm

- Ypsilanti District Library
  - 229 W Michigan Ave, Ypsilanti, MI, 48197
  - 734-482-4110 & [ypslibrary.org](http://ypslibrary.org)
  - Hours: Mon-Thurs 9-9pm & Fri-Sat 10-6pm
- Ypsilanti District Library
  - 5577 Whittaker Rd, Ypsilanti, MI, 48197
  - 734-482-4110 & [ypslibrary.org](http://ypslibrary.org)
  - Hours: Mon-Thurs 9-9pm, Fri-Sat 10-6pm, & Sun 1-5pm

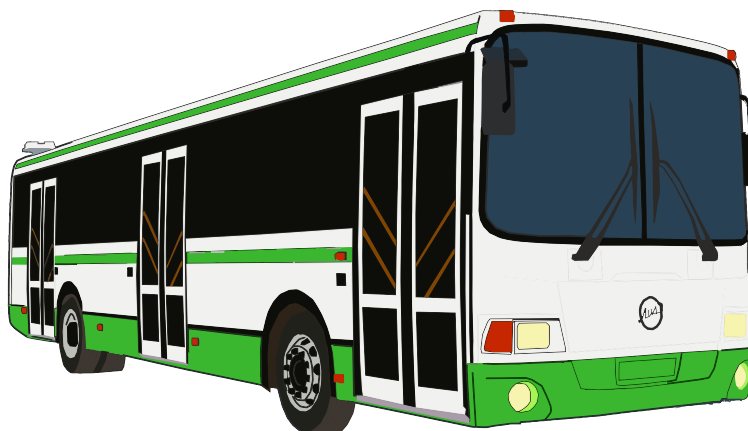
## ***FREE PHONES:***

- SafeLink Wireless
  - This is a government supported program for eligible low income people
  - Apply online for a free smartphone with unlimited talk, text, & data! Visit [www.safelinkwireless.com/](http://www.safelinkwireless.com/) to apply.
- QLink Wireless
  - This is also a government support program for eligible low income people
  - Apply online for free unlimited text, talk, & data. Visit <https://qlinkwireless.com/> to apply!



# ***TRANSPORTATION:***

- AAATA
  - 2700 S Industrial Hwy, Ann Arbor, MI 48104
  - Apply for reduced fare cards online and bring the application to the Main office listed above.
  - Call 734-973-6500 for more help or visit [www.theride.org](http://www.theride.org)
- AAATA Blake Transit Center
  - 328 S Fifth Ave, Ann Arbor, MI, 48103
  - Visit [www.theride.org](http://www.theride.org) for routes & times
- AAATA Ypsilanti Transit Center
  - 220 Pearl St, Ypsilanti, MI, 48197
  - Visit [www.theride.org](http://www.theride.org) for routes & times
- Amtrak
  - 325 Depot St, Ann Arbor, MI, 48104
  - Call 800-231-2222 or go online at [www.amtrak.com/home](http://www.amtrak.com/home) for routes & times
- Greyhound
  - 325 Depot St, Ann Arbor, MI, 48104
  - Call 800-231-2222 or go online at [www.greyhound.com/en-us/bus-station-240053](http://www.greyhound.com/en-us/bus-station-240053) for routes & times



# ***STREET SOLIDARITY & MUTUAL AID:***

- Washtenaw Camp Outreach (WCO)
  - 734-238-3639 & washtenawcampoutreach@gmail.com
  - Working with the homeless community to provide direct support, supplies, services, & aid
- Washtenaw General Defense Committee
  - 734-249-8051 & washtenawgdc@gmail.com
  - Services included:
    - Community defense
    - Solidarity actions & work
    - Mutual aid efforts
- MANY Mutual Aid Network of Ypsilanti
  - 32 N Washington St, STE 1, Ypsilanti, MI, 48197
  - 734-999-0356
  - A loose community support network & a worker self-directed 501c3 nonprofit
  - They focus on solidarity, not charity when working with neighbors.