

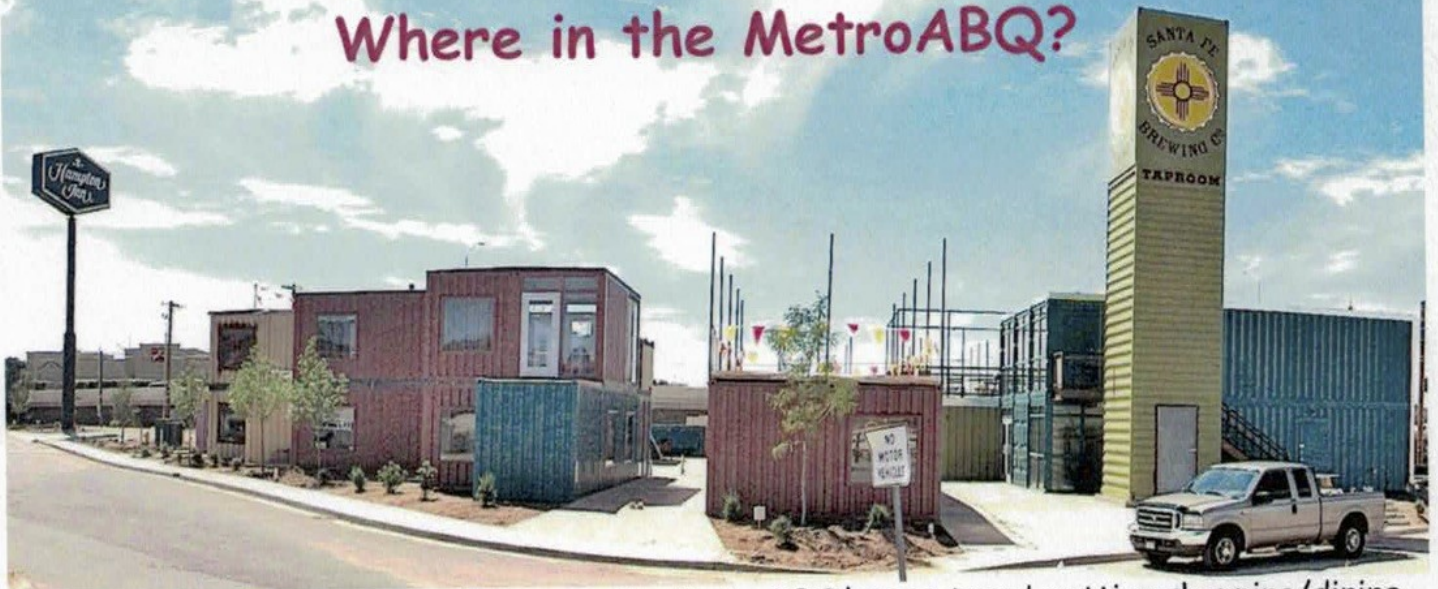
# MetroABQ Real Estate Newsletter



Including Albuquerque, Rio Rancho, Corrales, Placitas, and the East Mountains.

October 2015

## Where in the MetroABQ?



Welcome to **Green Jeans Farmery**, the MetroABQ's new trend-setting shopping/dining infill project close to the Big-I Corridor, crafted from metal shipping containers. The project, envisioned by local developer Roy Solomon, features 11 unique, local businesses, all fashioning their storefronts from numerous recycled steel containers. Santa Fe Brewery, the Rustic 505 Food Truck now Rustic on the Green, Zeus' Juice & Nutrition, Fit Studio & FashionLocker, Rockin' Taco, Epiphany Espresso, Amore Pizzeria, Bocadoillos, Distillery 365, Soup Dog and Chill'N Ice Cream are the current tenants.

From the [Greenjeansfarmery.com](http://Greenjeansfarmery.com) website: "Green Jeans Farmery is a community-oriented commercial plaza constructed entirely with repurposed shipping containers as modular, architectural building blocks. The Farmery functions as an indoor/outdoor gathering place that builds on ingenuity, fun and localist choices with the message of healthy living and neighborhood."



What I enjoy about this new community concept is the location: Green Jeans Farmery is located in the most unexpected place! **See page two for details...**

Chris Lucas

[www.ChrisLucasABQ.com](http://www.ChrisLucasABQ.com)

[Chris@chrislucasabq.com](mailto:Chris@chrislucasabq.com)

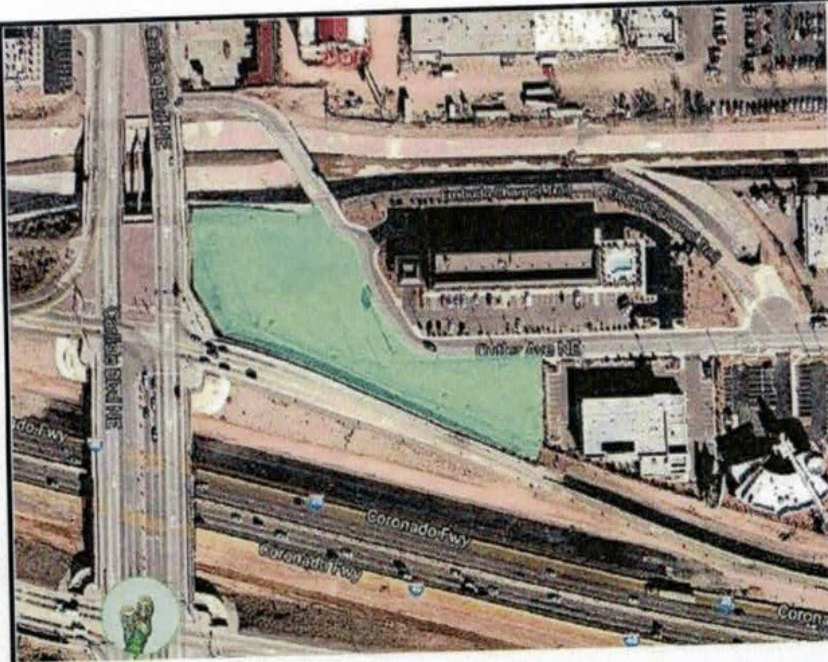
c. 505.463.5317



**Chris Lucas**  
Real Estate

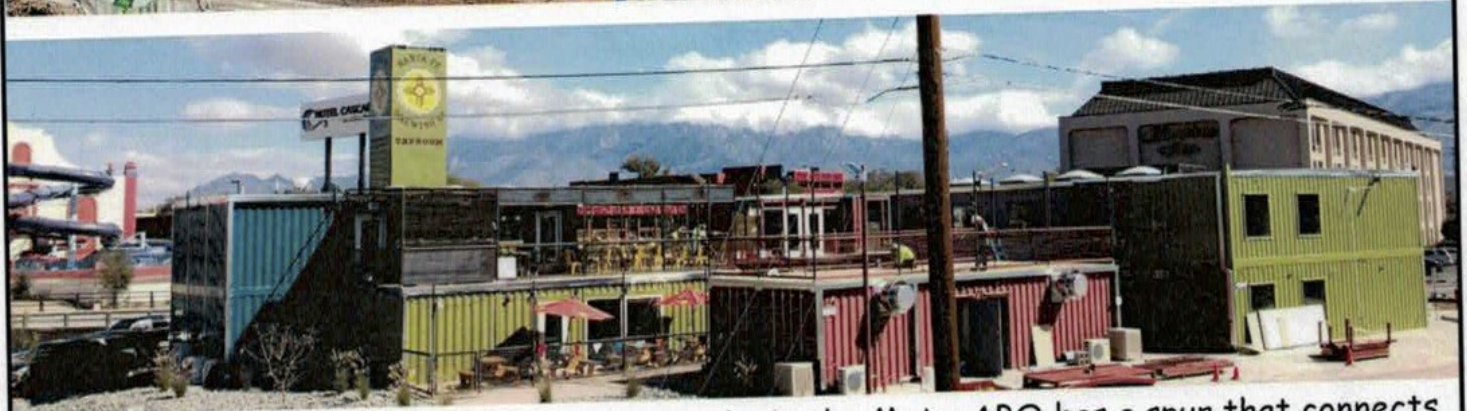






The new **Green Jeans Farmery** dining/commercial center is located alongside the off-ramp at I-40 and Carlisle Blvd. The unique, all-local concept fills in the open space no-man's land between the Hotel Cascada Waterslide and the Hampton Inn, as seen to the left in green, and below.

The commercial project will have numerous rooftop dining and drinking spaces, with incredible views of the Sandia Mountains. The entrance is from Carlisle Blvd; however, a major bikepath allows access to the complex, as it wends its way under the Carlisle Exit, and heads east toward the mountains, or west to the Big-I.

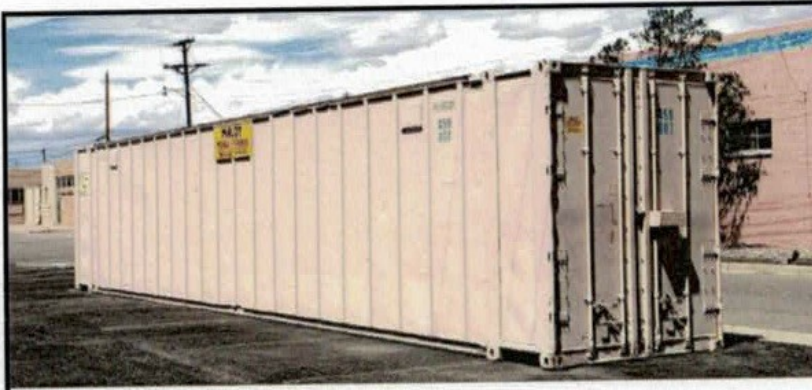


One of the most important bike/walking paths in the MetroABQ has a spur that connects to **The Farmery**: the North (Diversion) Channel Bikepath begins just down the road alongside the UNM North Golf Course, and heads due north all the way past Balloon Fiesta Park. Closer to the Big-I, though, that path forks east and pops up just at The Farmery, and continues along the interstate heading east. I love that bikepath because it is mostly dedicated--from UNM, you only cross over one roadway--Indian School Blvd; the rest of the path keeps you out of traffic, with safe bike underpasses, until Osuna Blvd.

To the right is an example of a hydroponic growing room/shipping container from [GreenJeansFarmery.com](http://GreenJeansFarmery.com). You can grow your own fruits and vegetables...see the next page. On page one, top, is a photo of The Farmery as they were still creating the site, stacking the shipping containers in place; bottom photo on the next page was taken the same day. From the website on page one, bottom, is a site image. This page, top, is the excellent infill design, fitting perfectly into an urban space. The middle pan image is from the off-ramp last week, as they were completing the project.







## A Container Of Your Own...

Do you want to grow your own hydroponic fruits and vegetables? It's easier than one might think, and doesn't take up much room.

From the [website](#): "You can own your own or lease a Grow Bin. It will easily pay for itself in saved grocery bills. Set it next to your juice bar and offer drinks right off the plant."

*We are what we eat: Real food is the best medicine. Locally grown fruits, vegetables and herbs made more affordable and without pesticides. Processed "empty calories" should not be the only alternative for people on a budget. Grow Bins Are:*

- **Affordable:** the footprint of the bin does not require a lot of land to grow and uses a space no bigger than a driveway. Own or lease the Bin; it can easily pay for itself.
- **Environmentally friendly:** no polluting our soil, pesticide free.
- **Year-around growing:** 12 months out of the year; climate controlled, unique LED grow lights and proven hydroponic vertical growing system."

Above left is a typical shipping container, in the Wells Park area north of Downtown; left: that same container can be re-purposed for another life.



Starting a Trend...Roy Solomon is beginning a local conversation with his shipping container project, which is taking off in other cities. Above is one of Starbucks' shipping container shops in San Francisco, from the web. Look for other shipping container projects in the

MetroABQ in the next few years. The evolution of local shipping container projects--numerous levels stacked and placed at crazy obtuse/acute angles, perhaps--will be wonderful to witness as we move forward; with The Farmery, the MetroABQ is now on firmly located on the Shipping Container map.



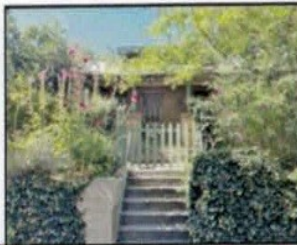


Click to view the Visual Tours for all these properties.

Where in the MetroABQ  
do you want to be?



In Ranchos de Albuquerque?

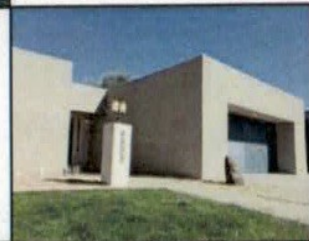


In Silver Hill?

Selected  
Listings...



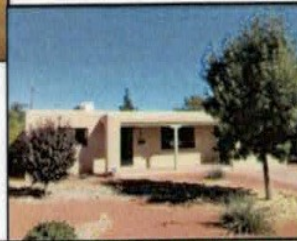
Downtown?



In Academy Estates?



In Los Altos?



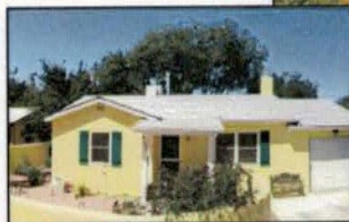
In Parkland Hills?



In Nob Hill?



In A Carlisle Condo?



In The UNM Area?



North of Downtown?

Heritage East  
Bent Road NE



Recently Sold:

Northern Meadows  
Desert Paintbrush NE



In Historic Silver Hill  
On Silver & Oxford Ave SE

