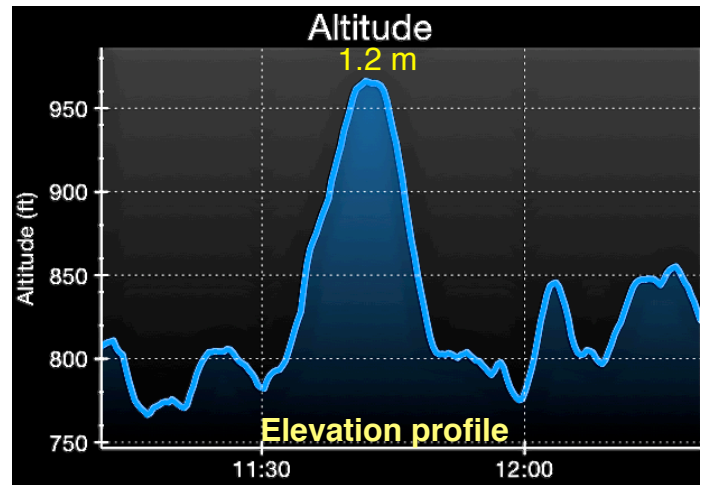
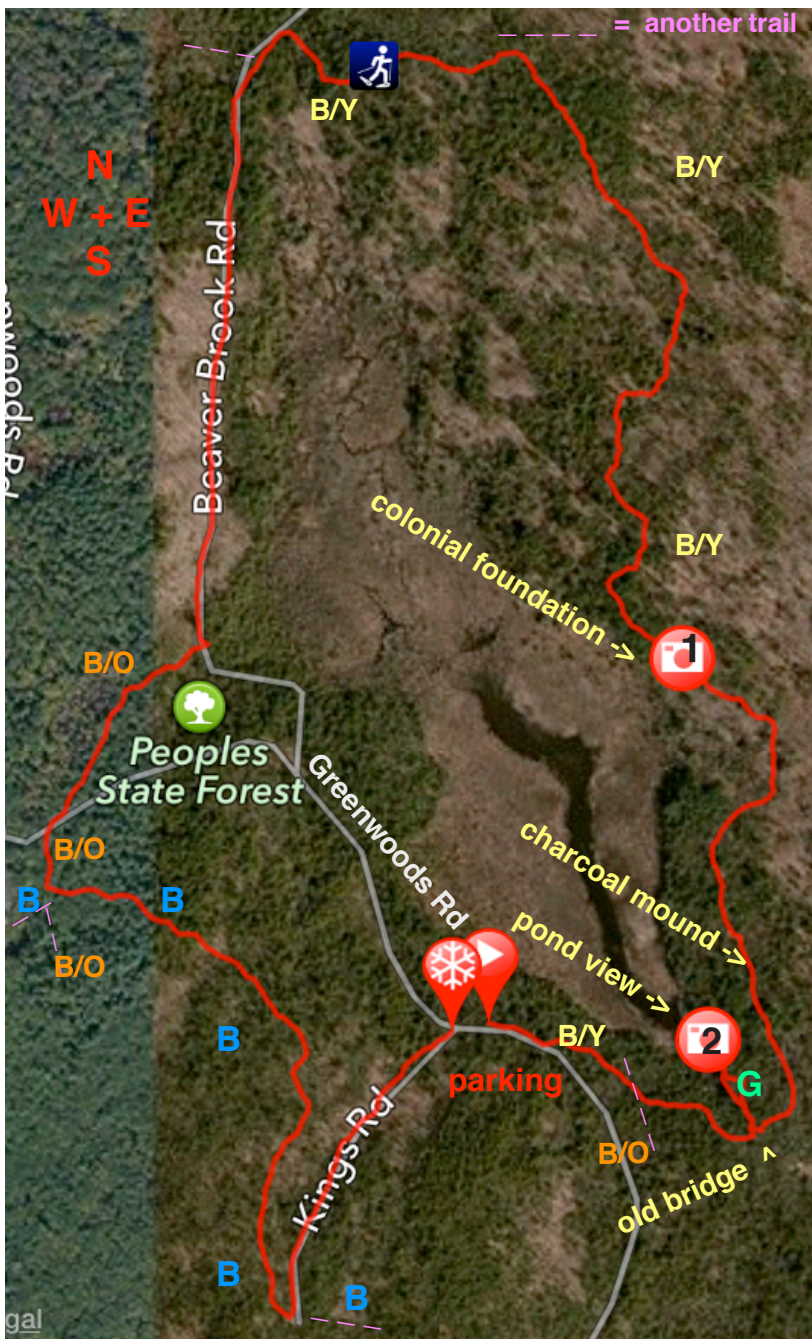


King Road Loop:

3.3 miles

800' vertical

1.7 hours



Colonial stone foundation

Mileage summary:

Hike south on Greenwood Rd > at 0.1 turn left on B/Y >
At 1.7 turn left on Beaver Brook Rd >
At 2.2 turn right onto B/O > at 2.5 turn left onto B >
turn left onto King Rd at 3.0 > return to car at 3.3

King Road Loop takes you on 3 of the major trails in Peoples State Forest and a number of historic features. Parking (41°56'33.67"N 72°59'44.0"W) is on either side of King Road at the junction with Greenwood Road. Additional parking is also available at the end of the road if you have a high clearance vehicle. At the junction of the two roads, hike a short distance on Greenwood Road, then turn left onto the Charles Pack Trail (blue blaze & yellow dot B/Y). Continue past the junction with the B/O (blue blaze & orange dot) trail at 0.2 to the bridge over Beaver Brook (note the old cable bridge on your right). Turn left after the bridge on the short green blazed trail (G) to the Pond at 0.3. Return to the B/Y trail next to the bridge, turning left to follow the B/Y north. At 0.6 discover a charcoal mound from the 1800's on your left. It is 25' wide & 1.5' high from the bottom of the ditch surrounding it. It is about 25' off the trail on the left. The key to finding it, is the ditch that surrounds it. To make charcoal, you cover the burning wood with dirt to carbonize it. If you cross a narrow bridge, you missed it. As you continue north on the B/Y you cross a number of wet sections with stepping stone that keep your feet dry. These were placed in the 1930's as a CCC project. Their work has stood the test of time!! At 0.9 you will reach, on your right, the foundation for an old colonial home (photo). A number of these stones are of very significant size. At 1.0 cross Pack Grove Road & at 1.5 cross Pack Grove Road again. At 1.7 turn left onto Beaver Brook Road & at 2.2 turn 90° right onto the B/O trail & ascend into the forest. At 2.4 turn right on Greenwood Road then left into the forest following the B/O trail, reaching the B (blue) trail at 2.5. Turn left to follow the B trail south. At 3.0 turn left at the Kings Road cul-de-sac & at 3.3 return to your car.

Alan M. Perrie 6-12-16