

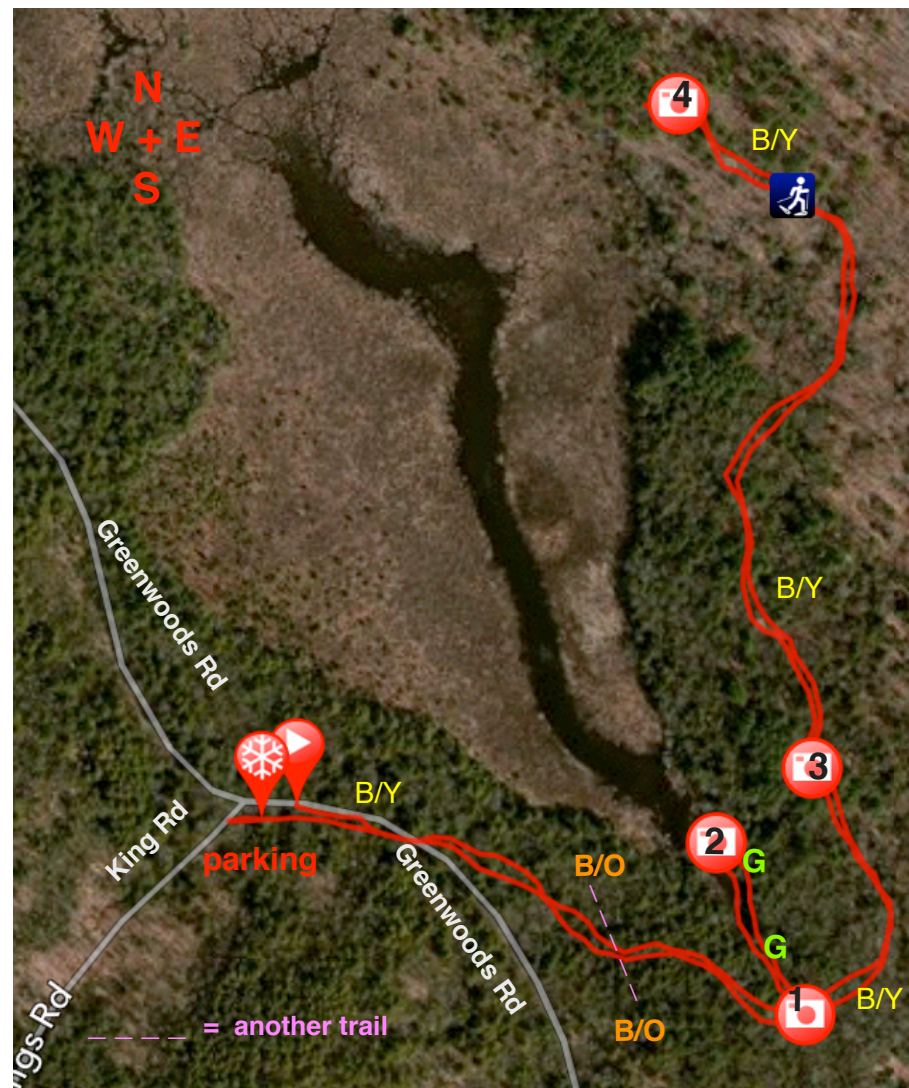
Pack Premium
“out & back”
1.7 miles
280’ vertical
1.5 hours



View of the Pond at the end of the Green Trail

Mileage summary:

Follow the B/Y from its start on Greenwood Rd >
to the old & new bridge at 0.2
to the Pond on the G trail at 0.3
to the charcoal mound at 0.6
to the old colonial foundation at 0.9
Reverse direction, & return to your car at 1.7



The Pack Premium “out & back” hike has the most photo ops per mile. Park at the junction of King Rd and Greenwood Rd (3-5 cars at 41°56' 33.67"N 72°59' 44.0"W). The Charles Pack Trail, marked by a blue blaze with a yellow dot (B/Y), begins at the sign located 0.1 east from your car on Greenwood Rd. Continue straight crossing the Agnes Bowen Trail (B/O) at 0.2 and arriving at the new bridge across Beaver Brook. Photo op #1 is of the new and old bridge (a double cable crossing). The new bridge is much easier. Take a 90° left turn after the bridge onto the short Green blazed trail (G) to the Pond with a bench for viewing at 0.3 (photo above). Return to the B/Y trail, making a 90° left turn on the B/Y and then another 90° left turn to stay on the B/Y. At 0.6 discover a charcoal mound from the 1800's on your left (photo op #3). It is 25' wide & 1.5' high from the bottom of the ditch surrounding it. It is about 25' off the trail on the left. The key to finding it is the ditch that surrounds it. To make charcoal, you cover the burning wood with dirt to carbonize it. If you cross a narrow bridge, you missed it. Try again on your way back. As you continue north on the B/Y you cross a number of wet sections with stepping stones that keep your feet dry. These were placed there in the 1930's as a CCC project. Their work has stood the test of time! At 0.9 you reach on your right, the foundation for an old colonial home (photo op #4). A number of these stones are of a significant size. It will make you wonder... how did they do that? It is something to think about after you reverse directions, to return to your car at 1.7 miles.

Additional information on the construction of these trails, charcoal mounds, history, as well as its geological features can be found at the Barkhamsted Historical Society on 100 East River Road.