

POWERED BY



# BRYCE BULK

## Bulk Solvent Cartridge

### Key Specifications

- Up to 1/4" (6mm) throw distance\*
- Bulk-use
- Single-color
- Heavy-solvent compatible
- 1/2" (13.5mm) print swath
- 600 DPI
- Drop mass: 22pl\*
- Up to 1L yield\*
- 24 kHz effective (12 kHz per nozzle)\*

### Key Applications

- Primary package coding utilizing plastics, metals, and glass
- Variable data coding (lot/expiration)
- Other non-porous substrates

### About

Bryce Bulk is a bulk monochrome solvent industrial cartridge with 640 nozzles and a 1/2" print swath. With a 24kHz printing speed, Bryce Bulk nearly doubles the speed and/or resolution of the competition. Common uses include text, barcodes, and graphics on semi and non-porous substrates.




The cartridge design features long open times with heavy solvent inks while ensuring a low cost of operation. On chip READ/WRITE memory ensures that only approved inks are utilized in OEM partner machines.

### Target Customer

The ideal customer:

- Requires solvents in the ink formulation
- Utilizes semi and non-porous substrates
- Runs medium-to-large production batches or multiple shifts (24/7)

### Print Speed Table

12 kHz Print Speed Translation			
Horizontal DPI	Max. Line Speed* (Single Channel)	Max. Line Speed* (Dual Channel)	Sample Print Image (Simulated)
300	200 ft/min (~61 m/min)	400 ft/min (~122 m/min)	 1 234567 890128 Funai 300 DPI Printing
150	400 ft/min (~122 m/min)	800 ft/min (~244 m/min)	 1 234567 890128 Funai 150 DPI Printing
75	800 ft/min (~244 m/min)	1,600 ft/min (~490 m/min)	 1 234567 890128 Funai 75 DPI Printing

### Contact Us

Funai Microfluidic Solutions  
700 Setzer Way  
Lexington, KY USA 40508-1187  
+1(859)550-2070  
[contactus@funaisolutions.com](mailto:contactus@funaisolutions.com)  
[www.funaisolutions.com](http://www.funaisolutions.com)

\*Fluid Dependent

### Powered By Funai

Funai focuses on research and development of thermal inkjet microfluidics for specialty printing, life sciences, and consumer applications. With hundreds of printing-related patents, Funai is recognized as a top-tier microfluidic designer and manufacturer with scaling capabilities to partner with global industries.



# BRYCE BULK

## Bulk Solvent Cartridge

### About

Model	Funai Model No: F2**UA, F2**EU	
Environmental Protection	RoHS / REACH	
Printable Images	Text Barcodes Graphics	
Ink Capacity	Ink fill (avg) 17ml Deliverable ink (avg) Up to 1L*	
Nozzles	640 (two rows of 320)	
Heater Pitch	600 DPI	
Print Swath	0.532" (13.5mm)	
Firing Frequency	12 kHz per nozzle*	
Pen Stall	Shetland/Clydesdale	
Nozzle Sealing Method	Nozzle Clip	
Reservoir Type	Bladder	
Tubing Connector Size	1/8" (~3.2mm) ID	

### Usage

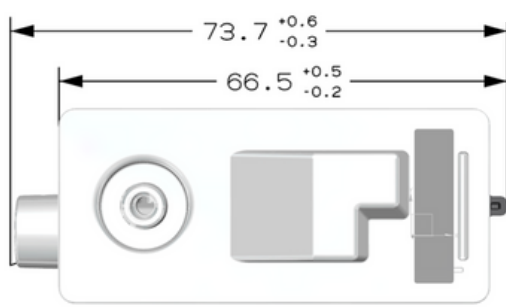
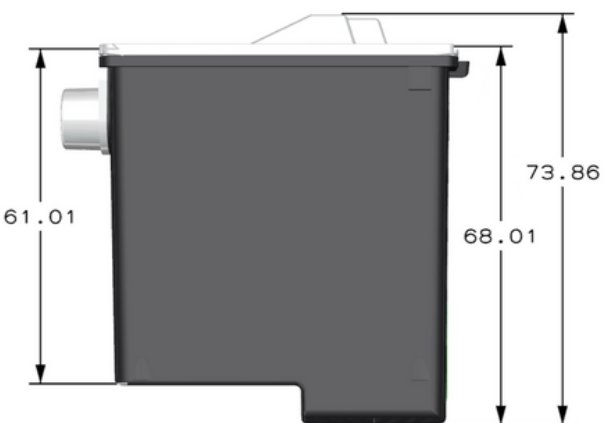
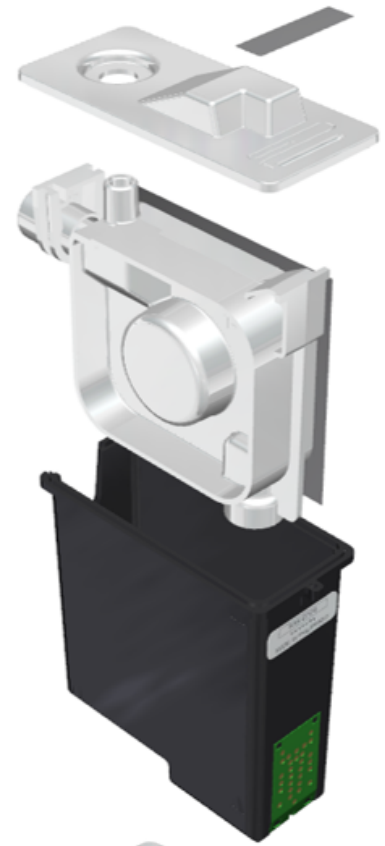
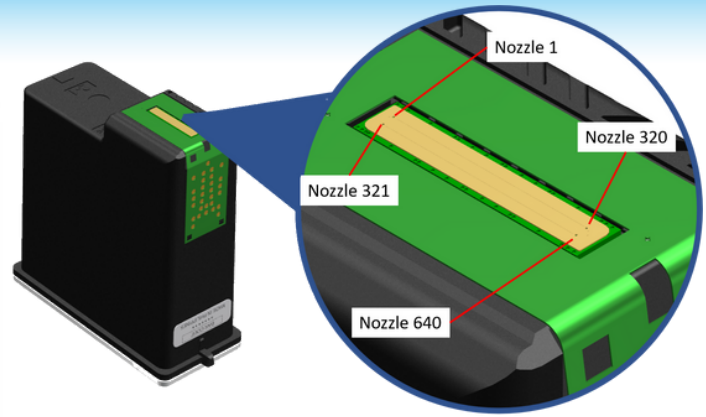
Working Location	Indoor	
Working Temperature	15C-35C (~60F-95F)	
Working Humidity	8%-80% (non-condensing)	
Compatible Solvents	Methyl Ethyl Ketone Acetone Ethanol <50% Methanol	

Ink Properties	PH	7-8
	Surface Tension (dynes/cm)	24-45
	Viscosity (cP)	2-10
	Particle Size (nm)	111.00

Filling Method	Vacuum Filler (LOBOZAR TECHNIK)
Drop Size	22pl*

### Dimensions and Storage

Size(mm)	28.8(W) x 73.9(H) x 73.7(D)	
Weight	41g	
Storage Temperature (empty)	15C~50C (~60F-120F)	
Storage Temperature (filled)	15C~35C (~60F-95F)	
Storage Humidity (filled)	5%-80% (non-condensing)	
ATM Pressure	<1609 (~5280ft)	
Shelf Life (Empty)	12 Months	



\*Fluid Dependent

