

THE POWER OF LIGHT ILLUMADYNE



ILLUMAGLO LED Highbay



HAVE QUESTIONS?

Call us today at (850) 741-4089



Scan the QR code
to visit our
Illumadyne website!

Illumadyne's IllumaGlo is a fresh take on traditional HID Highbay Designs, possessing the familiar appearance and subtle glow associated with refractor style lenses.

Illumadyne leverages the tried and true optical designs of the past with the best of today's LED's and electronic design principals to deliver unparalleled results in design and function.

HIGHLIGHTS

- > 175 LPW
- > 82 CRI
- Mid Power LED's Reduce Glare and Improve Visual Comfort
- Dim to Off Dimming Driver
- Integral PIR & Microwave Sensor Available
- Lifetime - L90 > 38,000 HRS at 55C
- Limited 10-Year Warranty

LED SYSTEM

- Latest mid-power LED's
- Efficiencies of up to 210 LPW
- High Thermal conductive Aluminum PCB for optimum efficiency and thermal management
- Silicone thermal interface pad to enhance thermal conductance and low LED operating temperature
- > 93% efficient outdoor rated driver -w- Synchronous Rectification. Equipped with short circuit and over temp protection
- DALI D4i Optional
- Built in 10KVA Surge Protection

CONSTRUCTION & MATERIALS

- Proprietary Wave Design Heat-Sink enhances turbulent air flow with increased surface area for exceptional thermal management
- Lightweight design provides ease of installation
- Pendant Mount or Aircraft Cable Hanger Assembly
- Suitable for Damp Location
- ETL Listed

OPTICAL SYSTEM

- Available with 3.5-11% Uplight
- Narrow, Medium and Wide Distributions
- Available with a clear or diffuse acrylic or polycarbonate refractor lens

ORDERING GUIDE

ORDERING EXAMPLE: IG - XXX - XXX - (XXX-XX) - XX - XXXX - [OPTIONS]

ORDERING GUIDE

SERIES	POWER LEVEL	VOLTAGE	LENSING	CRI	CCT	OPTIONS
IG	160 (160 Watts)	UNV (120-277V)	S16-AC (S16 Clear Acrylic)	70 70 CRI	3500 3500K	DOBS (Dimming Hi/Lo PIR Sensor)
	145 (145 Watts)	HV (200-480V)	S16-MG (S16 Acrylic MoonGlow)	80 80 CRI	4000 4000K	DOBSL (Low Mount Dimming Hi/Lo PIR Sensor)
	130 (130 Watts)		L16-AC (Lena 16 Clear Acrylic)	90 90 CRI	5000 5000K	DOBNLS (Bluetooth® Network Sensor)
			L16-MG (Lena 16 Acrylic MoonGlow)			SYN (Synapse Network Lighting Controls)
						BBU (20w Battery Backup)
						BBU30 (30w Battery Backup)
						10Y (10' Y-Toggle Hanger Assembly)
						120TL (6' Cordset with 120V Twistlock)
						277TL (6' Cordset with 277V Twistlock)
						CC (Conformal Coated Board)
Notes:	Notes:	Notes:	Notes:	Notes:	Notes:	Notes:

PERFORMANCE

FIXTURE	SYSTEM WATTS	DELIVERED LUMENS	EFFICACY LUMENS/W	CRI	CCT (°Kelvin)
IG 160 UNV	156 W	27,500	175	>80, >90	3,500 - 4,000 - 5,000
IG 145 UNV	145 W	26,000	179	>80, >90	3,500 - 4,000 - 5,000
IG 130 UNV	130 W	23,500	181	>80, >90	3,500 - 4,000 - 5,000

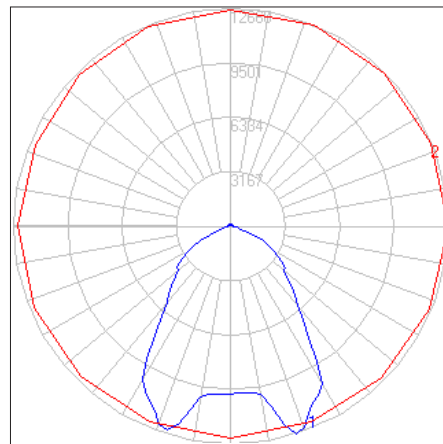
SYSTEM WATTS @ 120 VAC

Delivered Lumens Based on 4000K CCT with S16 Clear Acrylic Lens





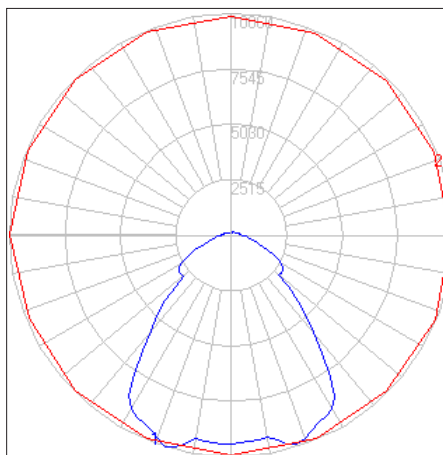
S16-AC (S16 Clear Acrylic)



	ZONE	LUMENS	LUMINAIRE
LUMEN SUMMARY	0-30	9526.57	37.95%
	0-40	14449.45	57.56%
	0-60	21604.36	86.06%
	0-90	24257.26	96.63%
	90-110	387.27	1.54%
	90-130	606.46	2.42%
	90-150	777.50	3.10%
	90-180	845.78	3.37%

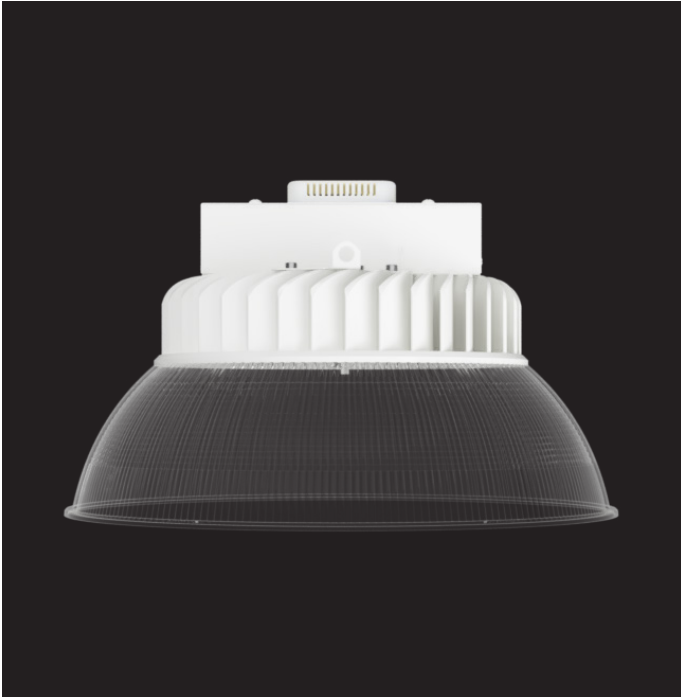


S16-MG (S16 Acrylic MoonGlow)

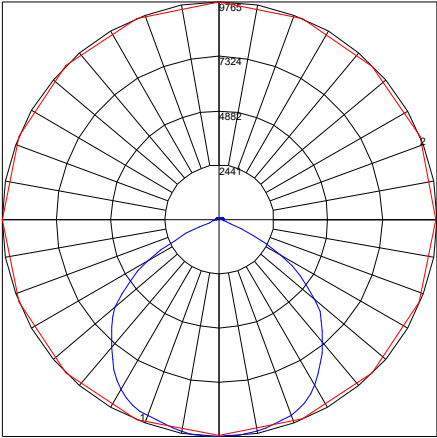


	ZONE	LUMENS	LUMINAIRE
LUMEN SUMMARY	0-30	8020.44	32.84%
	0-40	12915.95	52.88%
	0-60	18790.66	76.93%
	0-90	22781.02	93.27%
	90-110	804.29	3.29%
	90-130	1248.56	5.11%
	90-150	1534.12	6.28%
	90-180	1643.21	6.73%

APPLICATION PHOTOS



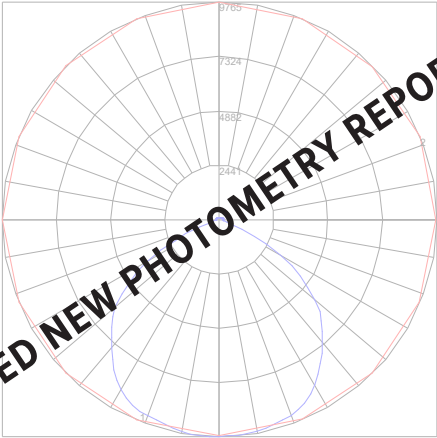
L16-AC (Lena 16 Clear Acrylic)



LUMEN SUMMARY	ZONE	LUMENS	LUMINAIRE
	0-30	7835.11	30.60%
	0-40	12877.89	50.30%
	0-60	22231.29	86.80%
	0-90	24782.23	96.80%
	90-110	346.31	1.40%
	90-130	604.84	2.40%
	90-150	761.23	3.00%
	90-180	820.89	3.20%



L16-MG (Lena 16 Acrylic MoonGlow)

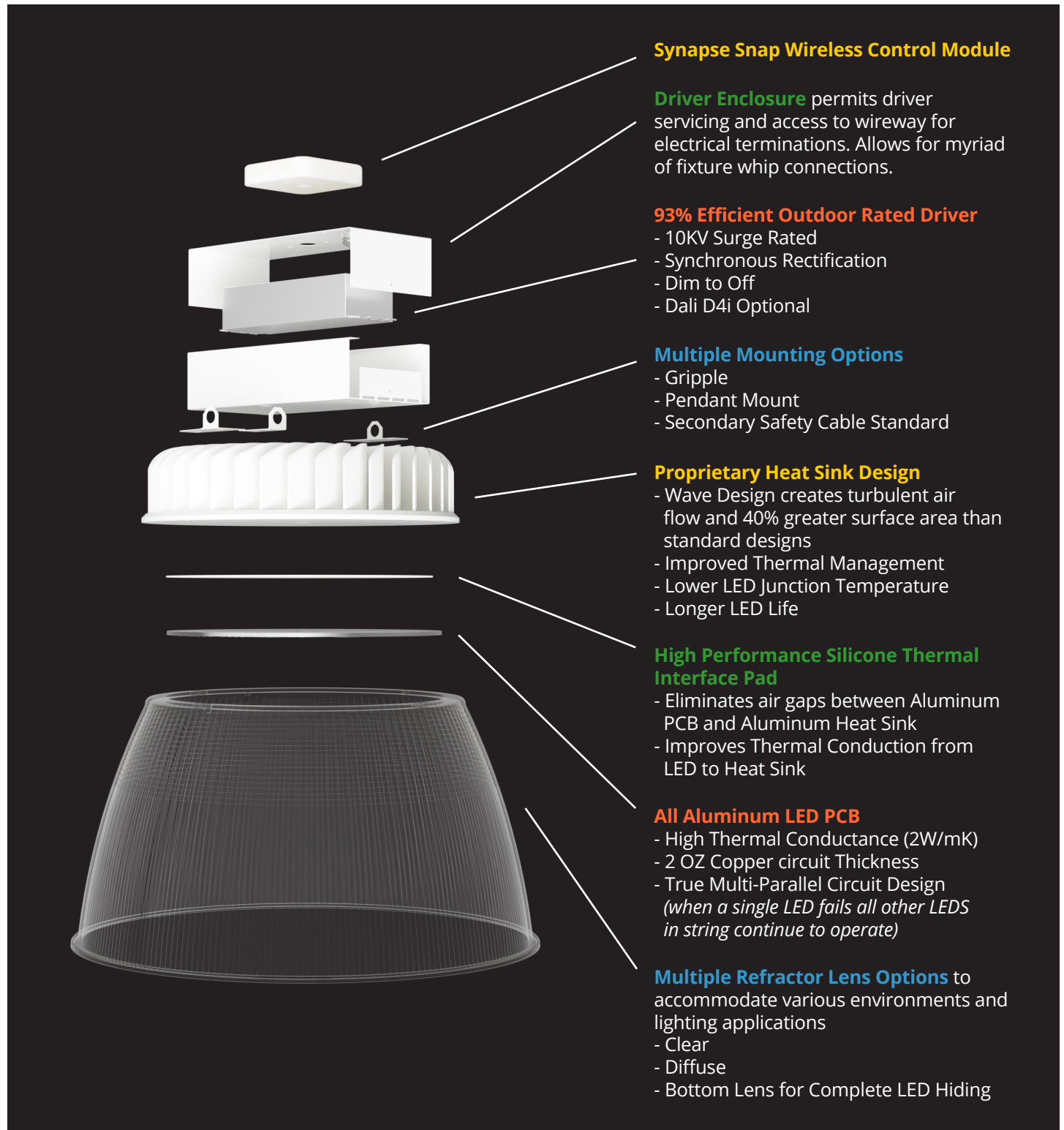


LUMEN SUMMARY	ZONE	LUMENS	LUMINAIRE
	0-30		%
	0-40		%
	0-60		%
	0-90		%
	90-110		%
	90-130		%
	90-150		%
	90-180		%

NEED NEW PHOTOMETRY REPORTS

NEED NEW PHOTOMETRY REPORTS

EXPLODED VIEW



TYPICAL INSTALLATION



ADDITIONAL IMAGES

