

SEASON **69**

DOMINION STAGE

UP NEXT | 2018-19

P.S. Your Cat Is Dead!
by James Kirkwood, Jr

spring 2019

Directed by Michael Page

Visit our website for audition information

anything but predictable

www.DominionStage.org



DS REWIND! *Dreamgirls*

More photos
online and
coming at
DominionStage.org



DS REWIND!
Urinetown: The Musical

CONTRIBUTORS/DONATIONS IN KIND

THANK YOU to our contributors!

DS always welcomes your
tax-deductible gift -
see our house manager or our
website for details on how
you can support your local
Community Theater!

Shop. Save. Support.
www.AMAZONSMILE.com
Select DOMINION STAGE

amazonsmile
You shop. Amazon gives.

Contributions are from Season 69 through December 31, 2018

Corporate/Foundation
Susan (Suzy) Platt Foundation
Surescripts
Amazon Smile
Community Forklift

Patron Sponsor (\$50 or more)
Brianna Goode
Jennifer Lyman
Phil Natalini
Richard Isaacs and David Vecera
David Moretti and Jake Carson
Matthew Randall

Patrons
Rebecca Harris
Ruben Vellekoop, Maxwell Wimmer

**DOMINION
STAGE**

Book, Music and Lyrics
by Laurence O'Keefe
and Kevin Murphy



TH FR SA > JAN 11 - 26, 2019 | GUNSTON THEATRE TWO



HEATHERS: THE MUSICAL

Book, Music and Lyrics by
Laurence O'Keefe and Kevin Murphy

Based on the film written by Daniel Waters

Heathers: The Musical was originally directed Off-Broadway by
Andy Fickman and choreographed by Marguerite Derricks

"Heathers: The Musical" is presented by special arrangement with SAMUEL FRENCH, INC.



Dominion Stage

2305 S. Walter Reed Dr. Box 15 | Arlington, VA 22206 | www.DominionStage.org

Matthew Randall..... *President*
Jennifer Lyman..... *Vice President*
Alex Bryce..... *Treasurer*
Rebecca Harris..... *Secretary*
Jason Damaso..... *Member at Large*
Brianna Goode..... *Member at Large*
Larry Grey..... *Member at Large*
Richard Isaacs..... *Member at Large*
David Moretti..... *Member at Large*

Executive Producer, Heathers: The Musical

Matthew Randall..... *WATCH Representative*

Dominion Stage is an all-volunteer, non-profit 501(c)3 organization and is a member of the American Association of Community Theatre (AACT) and Washington Area Theatre Community Honors (WATCH).



Dominion Stage is supported in part by
the Arlington Cultural Affairs Division
of Arlington Economic Development
and the Arlington Commission for the Arts.
WWW.ARLINGTONARTS.ORG

ANDREW REGIEC (*Set and Scenic Design*) is new to DS but has directed and designed sets for RCP, ESP, TAP and LTA - always with the guidance of a great director and talented (magical?) crew who build, paint and dress his design - and this experience is no exception! Thanks to Sam and Dave and team for collaborating to bring Westerberg High to life (with a little death).

STEPHANIE RUDDEN (*Technical Director*) is so proud to be a part of this amazing cast and crew! As an actress and designer, she has worked on more than 80 dance and theater productions, receiving two WATCH nominations in Lighting Design and as a Supporting Actress. Many thanks to the DS production team for the opportunity, and to Mike for his constant support.

JOLENE VETTESE (*Choreographer*) directed/choreographed *Peter and the Starcatcher* for RCP and *Cinderella Kids* at OHE. Dancing since age 5, she choreographed for Roundhouse Theater's summer camp programs and taught dance lessons at RCP and in her hometown in MI. As an actor/singer/dancer she was seen as Violet in PWLT's *9 to 5 the Musical* and *Godspell* at NTC (Broadway World Regional Award nomination). President of the Board of Directors for RCP, Jolene thanks Sam for this amazing opportunity, and David, Emma, Joey and her mom for supporting her addiction to theater.

COURTNEY WASHINGTON (*Assistant Director*) feels beautiful making her assistant directorial and production team debut! Previously she directed *Dog Sees God: Confessions of a Teenage Blockhead* at University of Mary Washington and *Swedish Fish* at NVCC. Thanks to her family, congrats to the cast and crew, and both to the production team!

GUIDE TO ORGANIZATIONS

2FT	Second Flight Theatre Company	MCP	McLean Community Players
ACCT	Aldersgate Church Comm Theatre	NTC	NextStop Theatre Company
ASC	Annapolis Shakespeare Company	OHE	Oak Hills Elementary School
BBAC	Black Box Arts Center	PTP	Port Tobacco Players
BSMF	Bethesda Summer Music Festival	PWLT	Prince William Little Theater
BWOC	Baltimore Washington Opera Co	QOHS	Quince Orchard High School
CFTC	City of Fairfax Theatre Company	RCP	Reston Community Players
CRT	Castaways Repertory Theater	RMT	Rockville Musical Theatre
DCMTA	DC Metro Theatre Arts	RPI	Rensselaer Polytechnic Institute
DS	Dominion Stage	STC	Shakespeare Theatre Company
ER	Echo Rep (Keegan Theater)	SU	Shenandoah University
FCT	Fauquier Community Theater	TAP	The Arlington Players
GMU	George Mason University	TCP	Tantallon Community Players
GWU	George Washington University	TT	Tapestry Theatre
JMU	James Madison University	VLOC	Victorian Lyric Opera Company
KAT	Kensington Arts Theater	VYP	Vienna Youth Players
LSDT	Lazy Susan Dinner Theater	WATCH	Washington Area Theatre Community Honors
LTA	Little Theatre of Alexandria	WA	Workhouse Arts
LWAC	Lorton Workhouse Arts Center	WS	Washington Savoyards
MCSDT	Montgomery College Summer Dinner Theatre	WSC	Washington Shakespeare Company

ABOUT THE TEAM continued

MARK HIDALGO (Co-Costume Design) would like to thank the many faces of Winona Ryder and the network of theatre costume shops who have lent their support to this production.

EMILY 'EI' JONAS (Fight Choreographer) is delighted to be back at DS, this time behind the scenes. Past onstage DS roles include Ms. Gardner in *Carrie: The Musical* and Jeannie in *The Great American Trailer Park Musical*. She is thankful to Sam and the production team for inviting her to lay a hand on stage combat and fight choreography. Break a leg, but, not really!

JOAN A.S. LADA (*Co-Stage Manager*) is happy to return to DS and join Christine Farrell as a member of the SM team. SM gigs for DS include *The History Boys*, *The Wild Party*, *Musical of Musicals: The Musical*, *Spring Awakening*. Other favorite SM gigs include (LTA) *August Osage County*, *Jesus Christ Superstar*, *Anything Goes*, *In the Heights*, *Spamalot*, *The Rocky Horror Picture Show*, *Chicago*, *Into the Woods*, and *Tommy*; (RCP) *A Chorus Line*, *Seussical*; (RMT) *The Full Monty*; (MCT) *Next to Normal*; (TAP) *Nine*; (ESP) *Love! Valour! Compassion!* Love to Stephen and our family. As always, love and thanks to my parents.

FRANK MOBILIO (Projection Design) is an architect, photographer, and caregiver to #sleepy-serge. Actor: STMP's *12 Angry Jurors* (Juror #6) and *Peter and the Starcatcher* (Scott). Design: STMP's *The Philadelphia Story* (Set Designer), *South Pacific* (Projection/Co-Set Designer with David M. Moretti), *A Bright Room Called Day* (Projection/Set Designer), *Evita* (Dramaturg/Projections). Thanks for this adventure. @reel_spectacles

DAVID M. MORETTI (*Co-Producer, Master Carpenter*) has been spending an abundance of time behind the scenes over the last few years designing/building sets (WATCH award recipient) and producing/directing for Dominion Stage. Dave just wrapped up time back on stage this past Fall, performing as Edna Turnblad (in sensible heels!) in *Hairspray* at RCP. Shout out to Jake for his patience and support of his husband's ongoing theater antics.

PHILLIP NATALINI (*Sound Design*) welcomes you to this production. As a safety reminder, there may be 50 ways to leave your lover, but there are only four ways to exit this theatre. Find the closest one to you now...really, look around, we'll wait. Phil is happy to be working with DS again with a great cast and crew. Love to the best two people he knows, Bill and Mom.

LARISSA NORRIS (*Makeup Design*) has been nominated for five WATCH awards, including Makeup nominations for *Steel Magnolias* (LTA), *Dreamgirls* (DS), *9 to 5* (TAP), and bloody special effects makeup for *Bug* (DS), and Hair nominations for *A Streetcar Named Desire* (LTA). Larissa is a makeup artist in the area, check out Larissa Norris Makeup on Facebook to see her work.

SAM NYSTROM (*Director, Co-Producer*) is excited to work again with DS after having appeared in their productions of *Avenue Q*, *Reefer Madness*, and *The Musical of Musicals: The Musical*. He has also directed for RCP and SSS and appeared in shows with NextStop Theatre Company, TAP, LTA, RCP, RMT, MCP, and KAT.

PRODUCTION TEAM

Producers	David M. Moretti, Sam Nystrom
Director	Sam Nystrom
Music Director	Blakeman Brophy
Choreographer	Jolene Vettese
Stage Managers	Christine Farrell, Joan A.S. Lada
Assistant Director	Courtney Washington
Technical Director	Stephanie Rudden
Lighting Design	Ryan Desmond
Sound Design	Phil Natalini
Special Effects/Projection Design	Frank Mobilio
Set and Scenic Paint Design	Andrew Regiec
Master Carpenter	David M. Moretti
Set Construction/Paint	Alex Bryce, Jake Carson, Rebecca Harris, Jennifer Lyman, Dave Moretti, Andrew Regiec, Chris Spadoni, Rachel Wolkowitz
Load In/Technical Crew	Heathers: The Musical Cast, Stephanie Rudden, Mike Rudden
Properties Design	Helen Bard-Sobola
Set Dressing	Hector Lorenzini
Costume Design	Barbara Esquibel, Mark Hidalgo
Hair Design	Mary Francis Dini
Makeup Design	Larissa Norris
Fight Choreography	Emily "EJ" Jonas
Firearms Coordinator	Chris Charbonneau
Marketing Materials	David M. Moretti
Campaign and Show Photography	Matthew Randall

Special Thanks to

Surescripts, The Little Theatre of Alexandria, The Arlington Players,
Port Tobacco Players, Reston Community Players,
AHCA neighborhood friends, Hal Crawford, Jared Davis, Andres Luque,
The Studio3700 Staff, Steve Lada, Bobbie Herbst, Steve Przybylski,
Elisa Rosman and those names not available when we went to press

Shop. Save. Support. @ AmazonSmile!
Visit >> smile.amazon.com
Select >> DOMINION STAGE

Visit >> smile.amazon.com

Select >> DOMINION STAGE

MUSICAL NUMBERS

TIME AND PLACE: 1989 | Sherwood, a small suburban town in Ohio

ACT ONE

Beautiful
Candy Store
Fight For Me
Freeze Your Brain
Big Fun
Dead Girl Walking
The Me Inside Of Me
You're Welcome
Big Fun (Reprise)
Our Love Is God



ACT TWO

My Dead Gay Son
Seventeen
Shine A Light
Lifeboat
Shine A Light (Reprise)
Hey Yo, Westerberg
Kindergarten Boyfriend
Yo Girl/Meant To Be Yours
Dead Girl Walking (Reprise)/
Hey Yo, Westerberg (Reprise)
I Am Damaged
Seventeen (Reprise)

Heathers: The Musical is presented with a 15 minute intermission.

**This performance contains gunshot sound elements, adult language/
mature situations and the use of fog effects**

**Thank you for silencing all electronic devices and not texting during the show.
Unauthorized photography, videotaping and audio recording
of this production is strictly prohibited.**

Thank you for your cooperation.

DIRECTOR'S NOTES

Before *Mean Girls*, there was *Heathers*. The 1988 cult film classic, while not a success at the box office, grew in popularity during the years after its release. This dark comedy's quotable lines (many of which are in the musical) and memorable scenarios has had numerous effects on pop culture and was eventually musicalized and staged Off-Broadway in 2014. I brought the show to Dominion Stage's attention shortly after its release and am thrilled to have had the opportunity to direct it for them now. Dominion Stage has developed a reputation in recent years for presenting quirky, "out of the box" musicals, such as *Reefer Madness!*, *Carrie: The Musical*, and *The Great American Trailer Park Musical*, and I am proud to have helped add this show to that list. Enjoy.

Sam Nystrom, Director

ABOUT THE TEAM

HELEN BARD-SOBOLA (*Properties Design*) Props: *Pippin* (TAP); *Greater Tuna, The Complete Works of Shakespeare (Abridged)*, *Spamalot* (WATCH nom), all at LTA. For DS, 'Night, Mother, Psycho Beach Party, Evil Dead: The Musical, The Great American Trailer Park Musical (WATCH win), History Boys, and Spring Awakening. Onstage: *Into the Woods* (Witch); *Pajama Game* (Babe), *Company* (Joanne); *Fiddler on the Roof* (Golde); *Man of La Mancha* (Aldonza). Love to my family!

BLAKEMAN BROPHY (*Music Director*) Music Direction: Next Stop: *Amour*; TAP: *Pippin*, *Little Shop of Horrors* (DCMTA nominee); ESP: *Rooms: A Rock Romance*. Other music credits: STC, Keegan Theatre, WSC, RCP, MCP, HRA 30th Annual Bark Ball, Greater Good Times Band. Blake's involvement in metro-DC theatre commenced in 1994 with onstage appearances in DS' productions of *The Visit*, *Oklahoma!* and *The Surrogate Son*.

RYAN DESMOND (*Lighting Design*) is excited to be joining DS for the first time. Some highlights from the past include lighting design for TAP's *The Hunchback of Notre Dame*, RCP's *The 25th Annual Putnam Valley Spelling Bee*, and RPI Players' *Titanic*. He would like to thank the cast and crew for a great production, and his fiancée Adena for her support.

MARY FRANCIS DINI (*Hair Design*) is thrilled to work with DS and be a part of the *Heathers: The Musical* team. She assisted with Hair Design for RMT's *Anything Goes*, and maintained wigs for RCP's *Hairspray*. She would like to thank Sue Pinkman and Malca Gibin for taking her under their wing (or curl) and teaching her all their tricks.

BARBARA ESQUIBEL (*Co-Costume Design*) is thrilled to work with DS for the first time, with this talented production team and cast. Barbara designed costumes for *A Funny Thing Happened on the Way to the Forum* (TAP-2008), *The Producers* (TAP-2010; WATCH Award) and co-costumed *Peter Pan* (TAP-2015). Barbara thanks Mark and Sam for allowing her to return to her first theater love, costuming.

CHRISTINE FARRELL (*Co-Stage Manager*) proudly partners once again with Joan Lada. Favorite production team credits include: *Harvey*, *The Audience*, *To Kill A Mockingbird*, *The Complete Works of Shakespeare (Abridged)*, *The Odd Couple: Female Version*, *The Game's Afoot*, *Spamalot*, *The 39 Steps*, *33 Variations*, *Rabbit Hole* and *Company* with LTA; *Sister Act*, *Evita*, *Arcadia*, *Assassins*, *The Lion in Winter*, *Parade*, *Amadeus*, *A Little Night Music*, *The Wiz*, *Bye Bye Birdie* and *A Midsummer Nights Dream* with SMP; *Snakebit*, *Urinetown: The Musical*, *Bent and Love! Valour! Compassion!* with DS; *Picasso at the Lapin Agile* with 2FT and *The Complete Works of Shakespeare (Abridged)* with the Fat and Greasy Citizens Brigade.



DS REWIND!
The Best Little Whorehouse in Texas

ABOUT THE CAST



PATRICIA RUPINEN (*Heather Chandler*) is ecstatic to be performing in DS' production of *Heathers: The Musical*! She most recently appeared on stage as Catherine in *Pippin* (TAP, WATCH Nomination), and Velma in *West Side Story* (LTA). While she lives to sing and dance, Patty works a 9-5 as a Software Developer to support her theater addiction...and her wonderful husband.



ALEX SIEGAL (*Ensemble, Preppy Stud, Officer McCord*) Professional (ASC): *Cabaret* (Kit Kat Dancer/Victor/Sailor); *Kiss Me, Kate* (Dance Captain/Featured Ensemble). Regional (BSMF): *The Sound of Music* (Rolf). Collegiate: *Curtains* (Randy/Ensemble), *The Drowsy Chaperone* (Gangster), *Into the Woods* (Steward). Training: B.A., Music (Vocal Performance), High Point University. Endless thanks to Mom, Dad, brother John, and amazing friends for encouraging me to dream big!



JON SIMMONS (*Ram Sweeney*) is thrilled to go back to high school! His experience as an elementary school teacher is very different than Westerberg High. Favorite roles include Adam/Felicia in *Priscilla, Queen of the Desert* (KAT), Charlie in *The Bridges of Madison County* (KAT), Younger Brother in *Ragtime* (OHP), and Willard in *Footloose* (MCP). Jon loves performing with such talented, fun performers. Go Rottweilers!



HANA TAWIL (*Heather McNamara*) GMU Theatre, SU Vocal Performance. Hodel in *Fiddler on the Roof*, Annas in *Jesus Christ, Superstar* (both at VYP), Gabriella in *High School Musical 2*. *Heathers: The Musical* is a dream come true for her! She'd like to thank her parents, her cousins, Liam, Hannah, and especially Mrs. Smith for always supporting and believing in her.



RYAN WALKER (*Ensemble, Hipster Dork*) is so thrilled to be doing his first production with DS and this show especially! Ryan has studied musical theatre at Catawba College in North Carolina as well as The American Musical and Dramatic Academy in NYC. He is currently a bartender at Regal Cinemas in Springfield, VA. Enjoy the show!



DAVID WEINRAUB (*Principal Gowan, Veronica's Dad, Kurt's Dad*) After a 15 year hiatus, David is excited to return to the stage in *Heathers: The Musical*. Since that time he has played with various bands and most recently music directed LWAC's *The Rocky Horror Show* and *Rock of Ages*. Previous roles include TT: *You're a Good Man, Charlie Brown* (Charlie Brown); LSDT: *Fiddler on the Roof* (Motel Kamzoi); *Once Upon a Mattress* (Prince Dauntless); ER: *Brighton Beach Memoirs* (Stanley Jerome); BWOC: *Die Fledermaus* (Frosch); WS: *Pirates of Penzance* (Pirate/Policeman). Much love to Catherine and Michael for being the best wife and son... ever!!

CAST

Veronica Sawyer Rebecca Cooley
J.D. Dean Matt Calvert
Heather Chandler Patricia Rupinen
Heather Duke Jennifer Rose
Heather McNamara Hana Tawil
Ram Sweeney Jon Simmons
Kurt Kelly Morgan DeHart
Martha Dunnstock Amanda C. Herman
Ms. Fleming/Veronica's Mom Colleen Robinson
Ram's Dad/Big Bud Dean/Coach Ripper Rishabh Bajekal
Kurt's Dad/Veronica's Dad/Principal Gowan David Weinraub

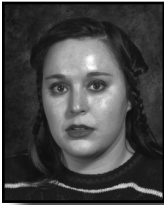
ENSEMBLE

New Wave Girl/Officer Milner Skye Lindberg
Stoner Chick Moriah Austin-Brantly
Young Republicanette Tobi Baisburd (Jan. 11-12, 24-26)
 Claire O'Brien-Jeffrey (Jan. 17-19)
Beleaguered Geek Chris Beatley
Preppy Stud/Officer McCord Alex Siegal
Hipster Dork Ryan Walker

ORCHESTRA

Conductor/Keyboards Blakeman Brophy
 Guitar David Smigielski
 Bass David Burrelli
 Violin Alex Lew
 Trumpet Paul Weiss
 Reeds Lindsay Williams
 Drums Matt Robotham

ABOUT THE CAST



MORIAH AUSTIN-BRANTLY (*Ensemble, Stoner Chick*) is having big fun performing in her first DS production with the talented company of *Heathers: The Musical*! She recently graduated from St. Mary's College of Maryland, where she was seen in *Spring Awakening* (Wendla Bergman), *a Eurydice*, and *Much Ado About Nothing*. She thanks her family, friends, and loving boyfriend for their support.



TOBI BAISBURD (*Ensemble, Young Republicanette 1/11-1/12 and 1/24-1/26 performances*) is a recent graduate of Quince Orchard High School and excited to join the DS family. Credits include Little Red in *Into The Woods* (MCSDT), Reno Sweeney in *Anything Goes* (QOHS) and Ariel Moore in *Footloose* (QOHS). Thanks to family for always supporting her and to cast for making every rehearsal "so very!"



RISHABH BAJEKAL (*Ram's Dad, Big Bud Dean, Coach Ripper*) is thrilled to be making his DS debut with such a talented cast and crew! Rishabh was most recently seen on the LTA stage in *Jesus Christ Superstar* and will be performing in *The Gondoliers* with VLOC next month. He loves his dead gay son and is very nervous that he will run out of words for this—



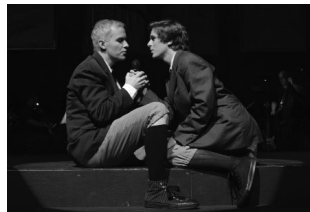
CHRIS BEATLEY (*Ensemble, Beleaguered Geek*) is thrilled to join DS for the first time! Going back to high school never felt so sweet. He thanks the kick-ass cast and crew, and his friends, family, and better half for supporting and keeping him sane. Past roles include Jamie in *The Last Five Years* and Mephistopheles in *Faustus* with BBAC and Inspirata, respectively.



MATT CALVERT (*J.D. Dean*) is thrilled to work with such a talented cast on his first DS production! Recent credits include Phoebus in *The Hunchback of Norte Dame*, Lucas from *If/Then*, and Will Bloom from *Big Fish the Musical*. He thanks DS for this experience, his family for their never-ending love and support, and the cast for the laughs and the memories.



REBECCA COOLEY (*Veronica Sawyer*) is astounded and delighted to be here, returning to DS after playing Emma Goldman in *Assassins*. Previous credits: Wendla in *Spring Awakening*, Maureen in *Rent*, and Natalie in *Next to Normal*. Becca thanks cast and crew for trusting her in this role and friends and family for listening to her myriad of anxieties and vocal warm-ups.



DS REWIND!
Spring Awakening



MORGAN DeHART (*Kurt Kelly*) is excited to return to DS in a favorite musical. Credits include *Carrie the Musical*, *History Boys*, and *Assassins* with DS, and *Pippin* and *Sweeney Todd* with TAP. As Ren McCormack in MCP's *Footloose*, he won broadwayworld.com's "Best Male Lead in a Community Theatre Musical" award." Thanks to friends and family for their limitless support and constant love.



AMANDA C. HERMAN (*Martha Dunnstock*) joins her first DS production, the first onstage after five years, as she focused on directing, including Artistic Director of CFTC. Holding a BA in Theatre from JMU, previous roles include Margot in *Legally Blonde*, Bonnie in *Anything Goes*, Joanne U/S/Ensemble in *RENT*, Jo in *Little Women*, The Baker's Wife in *Into the Woods*. She thanks the cast and production team, and fiancé, Michael.



SKYE LINDBERG (*Ensemble, New Wave, Officer Milner*) is excited to be joining DS for *Heathers: The Musical*, although the thought of going back to high school is terrifying! Favorite credits: *Musical Therapy* (Capital Fringe Festival) and *We Found the Wild Things* (Who What Where Theatre Collective). She graduated from GMU and serves as the Media Relations Associate at Arena Stage. Love to her friends and family!



CLAIRE O'BRIEN-JEFFREY (*Ensemble, Young Republicanette 1/17-1/19 performances*) RCP: *Aida* - Amneris (2018 WATCH Award - Outstanding Featured Actress), *Rock of Ages* - Sherrie (2018 WATCH Award - Outstanding Musical), *Legally Blonde* - Serena; WA: Janet - *Rocky Horror*; DS: *Bachelorette* - Gena, *The Little Dog Laughed* - Ellen; LTA: *Avenue Q* - Lucy, *Spelling Bee* - Marcy, *Ragtime* - Evelyn Nesbit; KAT: *Hair* - Sheila; MCP: *Drowsy Chaperone* - Janet; TAP: *Wedding Singer* - Linda. Thanks to Piano Man for being on baby duty.



COLLEEN ROBINSON (*Ms. Fleming, Veronica's Mom*) is making her third appearance with DS. She was previously seen in *Assassins* (Sara Jane Moore) and *Evil Dead: The Musical* (Cheryl). Other favorite shows include *Sister Act* (Sister Mary Patrick, SMP), *The Marvelous Wonderettes* (Missy), and *The 25th Annual Putnam County Spelling Bee* (Logainne). She sends love to her future husband Michael for all of the support!



JENNIFER ROSE (*Heather Duke*) is a recent GWU graduate appearing in 18 productions, including Julia Sullivan from *The Wedding Singer*, Blanche Barrow from *Bonnie and Clyde*, Roxane from *Cyrano de Bergerac*, Jesse from *The Complete Works of William Shakespeare [Abridged]*, Diane from *Bare: A Musical*, and Dell from *Tomorrowland*. This has been an incredible, life-changing experience and she hopes you have a lot of Big Fun watching.



DS REWIND!
Glorious!