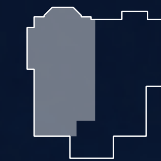




2 THE OVAL
HARROGATE

FLOORPLAN - APARTMENT ONE

2 BEDROOM APARTMENT LOWER GROUND FLOOR



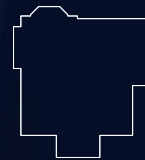
LOWER
GROUND FLOOR



GROUND FLOOR



FIRST FLOOR



SECOND FLOOR



THIRD FLOOR

KITCHEN/LIVING/DINING

25'4" x 18'5"

7.7m x 5.6m

BEDROOM 1

17'2" x 10'4"

5.2m x 3.1m

BEDROOM 2

17'1" x 9'4"

5.2m x 2.8m

DISCLAIMER

The dimensions shown are approximate and the precise measurements may vary. Please ask to see the drawings relative to the specific plot. Bathroom and kitchen layouts are indicative only. Please consult the Sales Adviser on-site for specific kitchen layouts. This information is for guidance only and does not form part of any contract or constitute a warranty. The specification was correct at the time of going to print however, Oakdale Estates reserve the right to make amends where necessary. Please note that any amends (that will be equal to or better) will be communicated at the time of reservation.



2 THE OVAL
HARROGATE

LUXURY LIVING ON THE OVAL

Visit

twotheoval.co.uk

Email

sales@oakdale-estates.co.uk





2 THE OVAL
HARROGATE

FLOORPLAN – APARTMENT TWO

2 BEDROOM APARTMENT LOWER GROUND FLOOR



KITCHEN/LIVING/DINING	26'9" x 14'2"	8.2m x 4.3m
BEDROOM 1	15'1" x 13'3"	4.6m x 4.0m
BEDROOM 2	12'0" x 13'11"	4.2m x 3.7m

DISCLAIMER

The dimensions shown are approximate and the precise measurements may vary. Please ask to see the drawings relative to the specific plot. Bathroom and kitchen layouts are indicative only. Please consult the Sales Adviser on-site for specific kitchen layouts. This information is for guidance only and does not form part of any contract or constitute a warranty. The specification was correct at the time of going to print however, Oakdale Estates reserve the right to make amends where necessary. Please note that any amends (that will be equal to or better) will be communicated at the time of reservation.



2 THE OVAL
HARROGATE

LUXURY LIVING ON THE OVAL

Visit

twotheoval.co.uk

Email

sales@oakdale-estates.co.uk

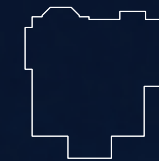




2 THE OVAL
HARROGATE

FLOORPLAN - APARTMENT THREE

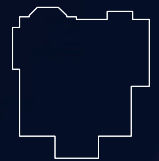
2 BEDROOM APARTMENT GROUND FLOOR



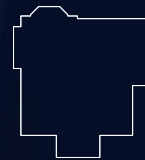
LOWER
GROUND FLOOR



GROUND FLOOR



FIRST FLOOR



SECOND FLOOR



THIRD FLOOR

KITCHEN/LIVING/DINING

25'4" x 18'5"

7.7m x 5.6m

BEDROOM 1

17'2" x 10'4"

5.2m x 3.1m

BEDROOM 2

17'1" x 9'4"

5.2m x 2.8m

DISCLAIMER

The dimensions shown are approximate and the precise measurements may vary. Please ask to see the drawings relative to the specific plot. Bathroom and kitchen layouts are indicative only. Please consult the Sales Adviser on-site for specific kitchen layouts. This information is for guidance only and does not form part of any contract or constitute a warranty. The specification was correct at the time of going to print however, Oakdale Estates reserve the right to make amends where necessary. Please note that any amends (that will be equal to or better) will be communicated at the time of reservation.



2 THE OVAL
HARROGATE

LUXURY LIVING ON THE OVAL

Visit

twotheoval.co.uk

Email

sales@oakdale-estates.co.uk

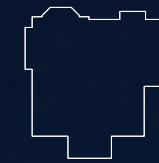




2 THE OVAL
HARROGATE

FLOORPLAN – APARTMENT FOUR

2 BEDROOM APARTMENT GROUND FLOOR



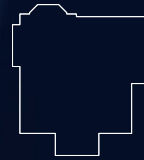
LOWER
GROUND FLOOR



GROUND FLOOR



FIRST FLOOR



SECOND FLOOR



THIRD FLOOR

KITCHEN/LIVING/DINING

24'4" x 18'0"

7.4m x 5.5m

BEDROOM 1

13'3" x 9'9"

4.0m x 3.0m

BEDROOM 2

10'4" x 10'0"

3.1m x 3.0m

DISCLAIMER

The dimensions shown are approximate and the precise measurements may vary. Please ask to see the drawings relative to the specific plot. Bathroom and kitchen layouts are indicative only. Please consult the Sales Adviser on-site for specific kitchen layouts. This information is for guidance only and does not form part of any contract or constitute a warranty. The specification was correct at the time of going to print however, Oakdale Estates reserve the right to make amends where necessary. Please note that any amends (that will be equal to or better) will be communicated at the time of reservation.



2 THE OVAL
HARROGATE

LUXURY LIVING ON THE OVAL

Visit

twotheoval.co.uk

Email

sales@oakdale-estates.co.uk

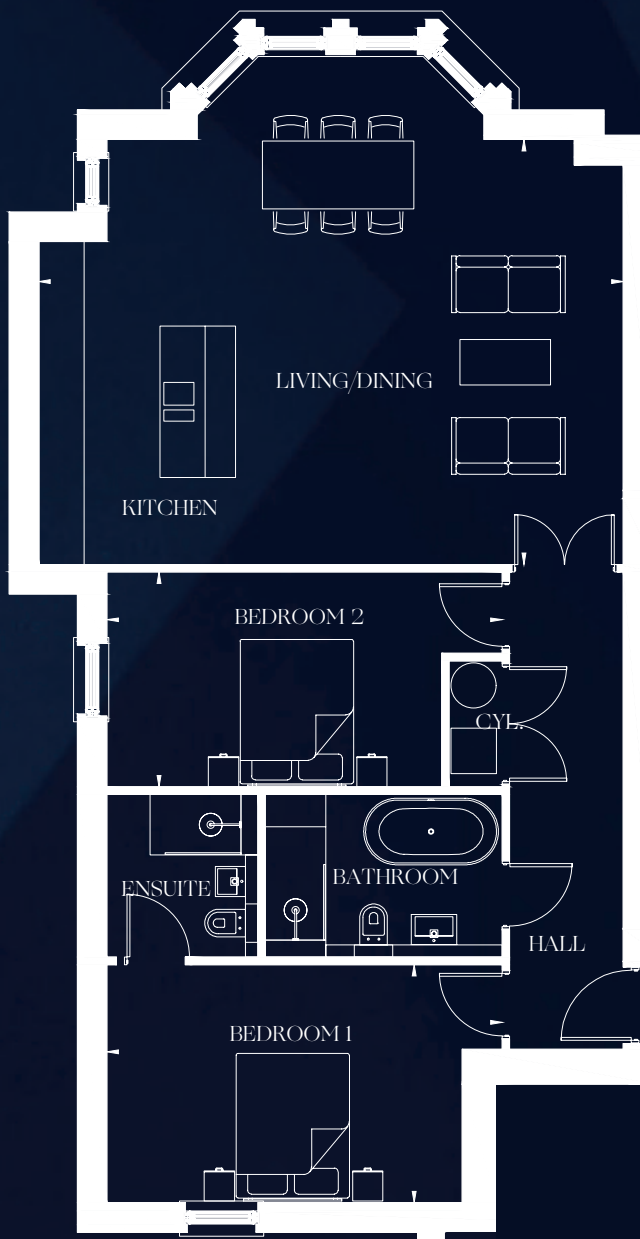




2 THE OVAL
HARROGATE

FLOORPLAN – APARTMENT FIVE

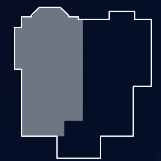
2 BEDROOM APARTMENT FIRST FLOOR



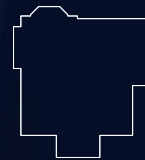
LOWER
GROUND FLOOR



GROUND FLOOR



FIRST FLOOR



SECOND FLOOR



THIRD FLOOR

KITCHEN/LIVING/DINING

25'4" x 18'5"

7.7m x 5.6m

BEDROOM 1

17'2" x 10'4"

5.2m x 3.1m

BEDROOM 2

17'1" x 9'4"

5.2m x 2.8m

DISCLAIMER

The dimensions shown are approximate and the precise measurements may vary. Please ask to see the drawings relative to the specific plot. Bathroom and kitchen layouts are indicative only. Please consult the Sales Adviser on-site for specific kitchen layouts. This information is for guidance only and does not form part of any contract or constitute a warranty. The specification was correct at the time of going to print however, Oakdale Estates reserve the right to make amends where necessary. Please note that any amends (that will be equal to or better) will be communicated at the time of reservation.



2 THE OVAL
HARROGATE

LUXURY LIVING ON THE OVAL

Visit

twotheoval.co.uk

Email

sales@oakdale-estates.co.uk





2 THE OVAL
HARROGATE

FLOORPLAN – APARTMENT SIX

2 BEDROOM APARTMENT FIRST FLOOR



NORTH



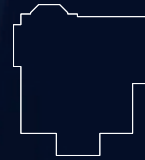
LOWER
GROUND FLOOR



GROUND FLOOR



FIRST FLOOR



SECOND FLOOR



THIRD FLOOR

KITCHEN/LIVING/DINING

26'9" x 14'2"

8.2m x 4.3m

BEDROOM 1

15'1" x 13'3"

4.6m x 4.0m

BEDROOM 2

12'0" x 13'11"

4.2m x 3.7m

DISCLAIMER

The dimensions shown are approximate and the precise measurements may vary. Please ask to see the drawings relative to the specific plot. Bathroom and kitchen layouts are indicative only. Please consult the Sales Adviser on-site for specific kitchen layouts. This information is for guidance only and does not form part of any contract or constitute a warranty. The specification was correct at the time of going to print however, Oakdale Estates reserve the right to make amends where necessary. Please note that any amends (that will be equal to or better) will be communicated at the time of reservation.



2 THE OVAL
HARROGATE

LUXURY LIVING ON THE OVAL

Visit

twotheoval.co.uk

Email

sales@oakdale-estates.co.uk





2 THE OVAL
HARROGATE

FLOORPLAN – PENTHOUSE ONE

3 BEDROOM PENTHOUSE SECOND & THIRD FLOOR



KITCHEN/LIVING/DINING	
25'11" x 22'5"	7.9m x 6.8m

DRESSING AREA	
11'0" x 8'0"	3.4m x 2.4m

BEDROOM 3	
15'5" x 10'8"	4.7m x 3.3m

BEDROOM 1	
19'4" x 14'11"	5.9m x 4.5m

BEDROOM 2	
12'8" x 12'4"	3.9m x 3.8m

DISCLAIMER

The dimensions shown are approximate and the precise measurements may vary. Please ask to see the drawings relative to the specific plot. Bathroom and kitchen layouts are indicative only. Please consult the Sales Adviser on-site for specific kitchen layouts. This information is for guidance only and does not form part of any contract or constitute a warranty. The specification was correct at the time of going to print however, Oakdale Estates reserve the right to make amends where necessary. Please note that any amends (that will be equal to or better) will be communicated at the time of reservation.



2 THE OVAL
HARROGATE

LUXURY LIVING ON THE OVAL

Visit

twotheoval.co.uk

Email

sales@oakdale-estates.co.uk





2 THE OVAL
HARROGATE

FLOORPLAN - PENTHOUSE TWO

3 BEDROOM PENTHOUSE SECOND & THIRD FLOOR



KITCHEN/LIVING/DINING	
26'9" x 24'4"	8.2m x 7.4m

BEDROOM 1	
19'3" x 16'11"	5.9m x 5.2m

BEDROOM 2	
17'0" x 15'11"	5.2m x 4.8m

BEDROOM 3	
13'3" x 10'9"	4.0m x 3.3m

DISCLAIMER

The dimensions shown are approximate and the precise measurements may vary. Please ask to see the drawings relative to the specific plot. Bathroom and kitchen layouts are indicative only. Please consult the Sales Adviser on-site for specific kitchen layouts. This information is for guidance only and does not form part of any contract or constitute a warranty. The specification was correct at the time of going to print however, Oakdale Estates reserve the right to make amends where necessary. Please note that any amends (that will be equal to or better) will be communicated at the time of reservation.



2 THE OVAL
HARROGATE

LUXURY LIVING ON THE OVAL

Visit

twotheoval.co.uk

Email

sales@oakdale-estates.co.uk

