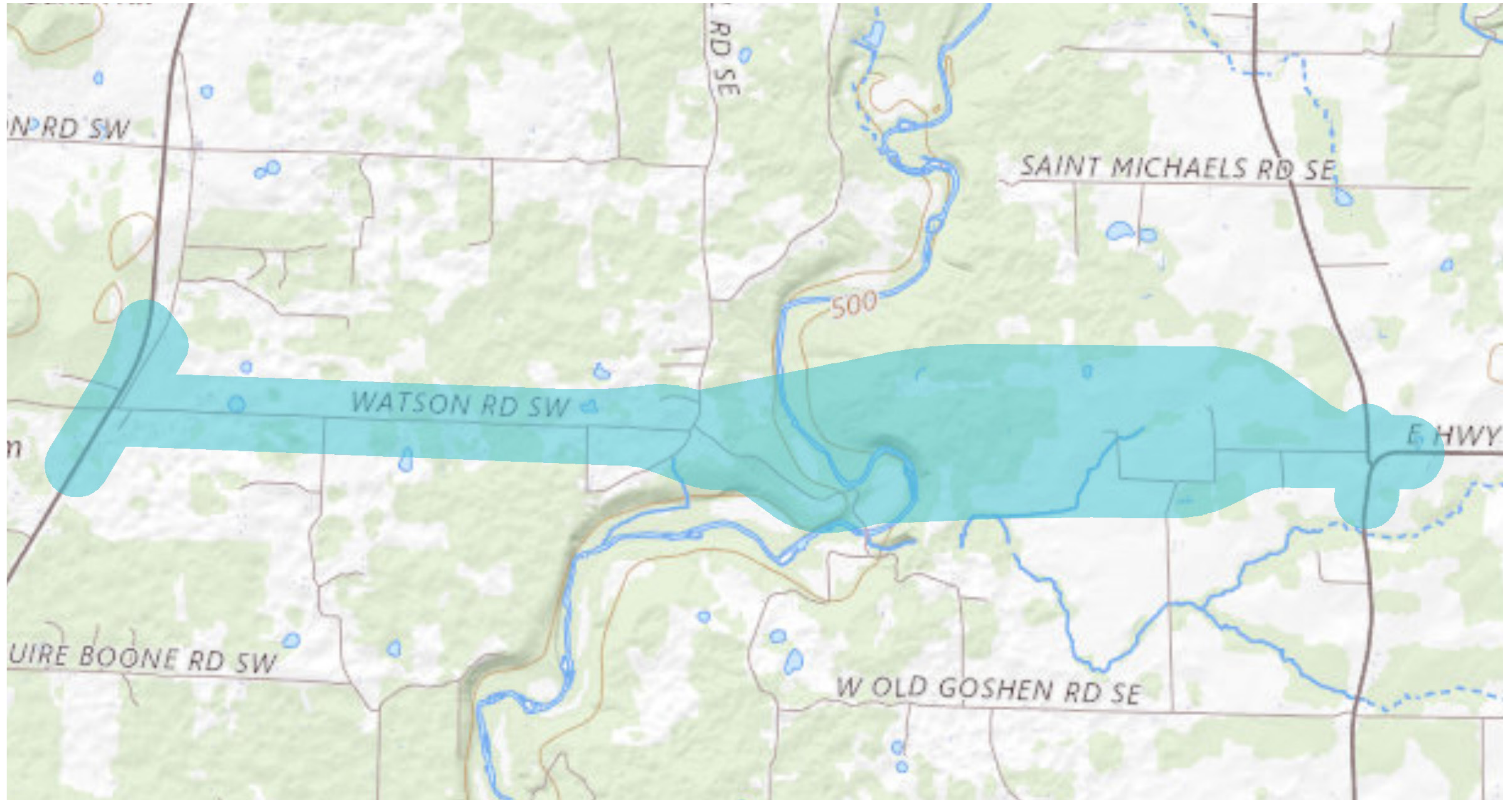




STATE ROAD 11



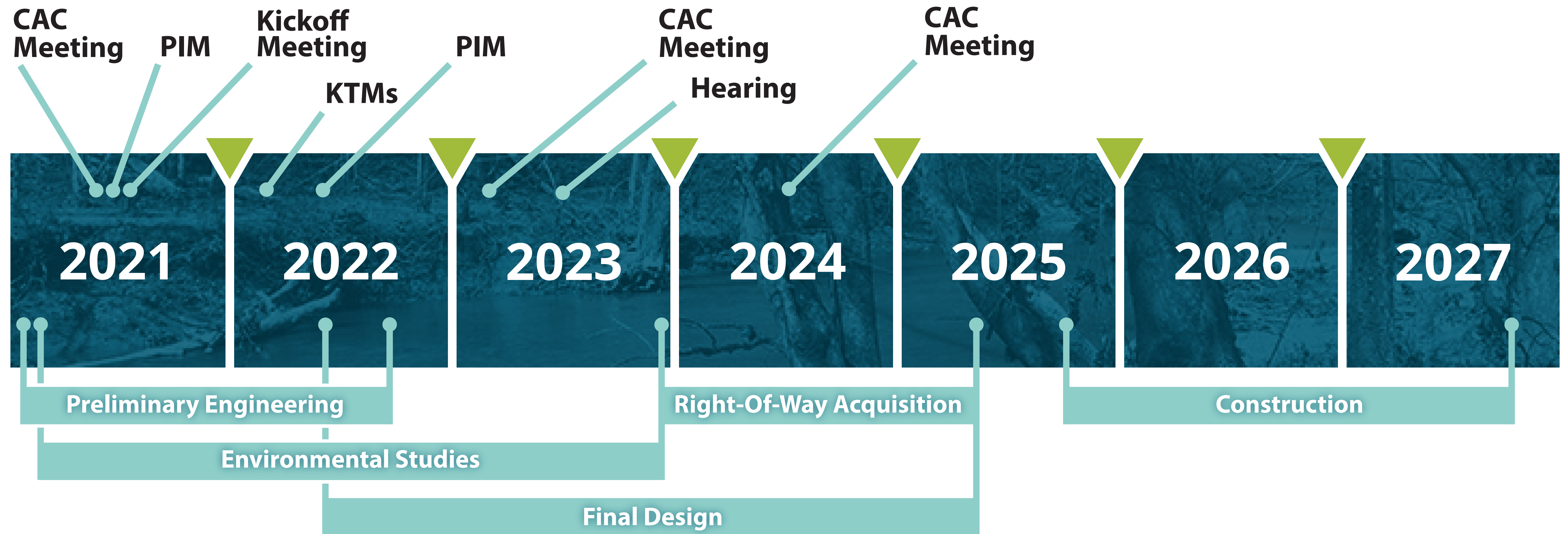
Project Study Area





STATE ROAD 11

Project Timeline





Need:

Improve safety, mobility and accessibility in southern Harrison County.

- Hilly, narrow, and often winding roadways with multiple 90-degree turns and poor sightlines are a safety concern and extend travel times
- There are only three crossings of Buck Creek in southern Harrison County

Purpose:

Provide an improved east to west transportation link in southern Harrison County that meets current INDOT standards for rural state highways and improves access:

- to and from Corydon (north)
- to and from Brandenburg (south)
- to and from South Central schools, South Harrison Park, and other local destinations

SR11 Alternatives Evaluation Matrix				
		Alternative 1	Alternative 2	Alternative 3
Environmental Impacts	Tree Removal (Acres)			
	Wetland Impacts (Acres)			
	Open Water Impacts (Acres)			
	Stream Impacts (Lft)			
ROW Impacts	Residential (Acres)			
	Agricultural (Acres)			
	Undeveloped (Acres)			
	No. of Relocations Residential			
	Total ROW (Acres)			
Earthwork	CYS Common Excavation West of Buck Creek			
	CYS Rock Cut West of Buck Creek			
	CYS Borrow West of Buck Creek			
	CYS Common Excavation East of Buck Creek			
	CYS Rock Cut East of Buck Creek			
	CYS Borrow East of Buck Creek			
Project Cost	Length of Project (Miles)			
	Utility Cost			
	Right-Of-Way Cost			
	Mitigation Cost			
	Construction Cost			



STATE ROAD 11



