



# STATE ROAD 11



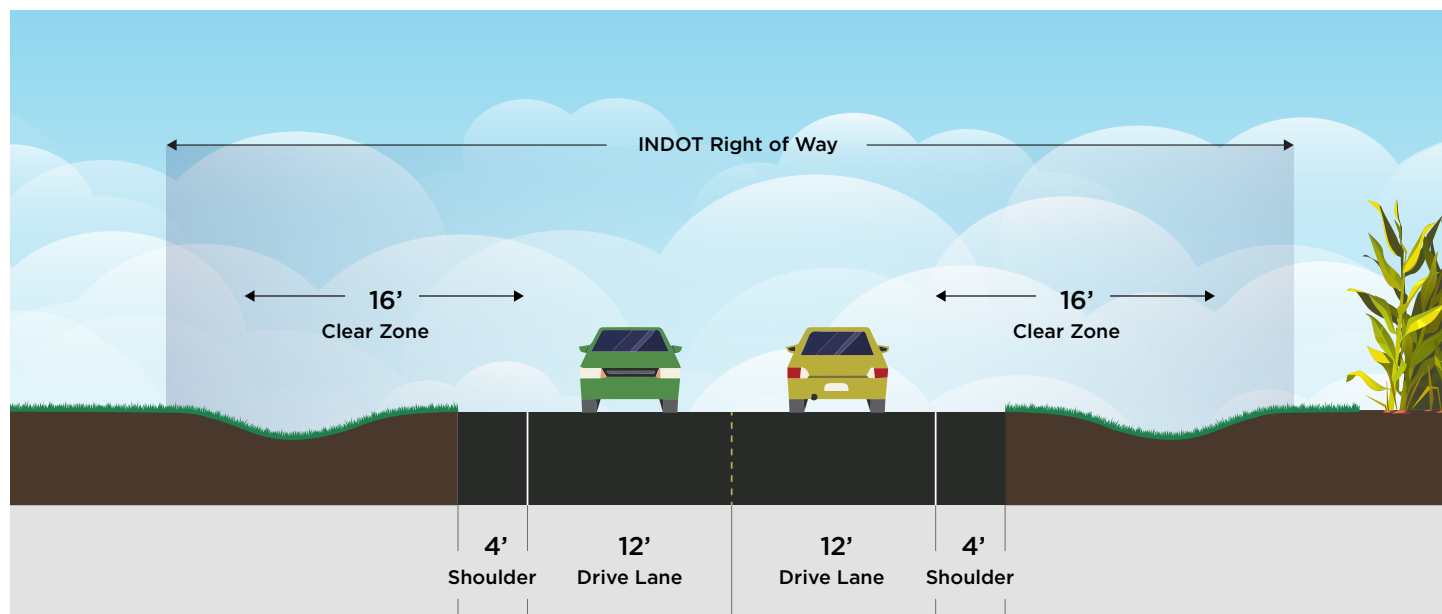
**The project extends State Road 11 in southern Harrison County from the intersection of SR 337, SR 11, and Melview Road across Buck Creek, generally following Watson Road to the intersection with SR 135.**

## Project History

The project was identified in the approved Harrison County 2003 Long Range Transportation Plan, and again in the 2019 Harrison County 2040 Long Range Transportation Plan. Public comment and input were integrated into the development of both long-range planning documents. The SR 11 Project (Watson Road Extension) was first discussed in the 2003 Long Range Transportation Plan as an improvement to east-west connectivity in the southern part of Harrison County. In a 2020 relinquishment agreement between Harrison County and INDOT, INDOT assumed the responsibility for funding and completing the SR 11 extension project and selected Lochmueller Group to study and develop the project.

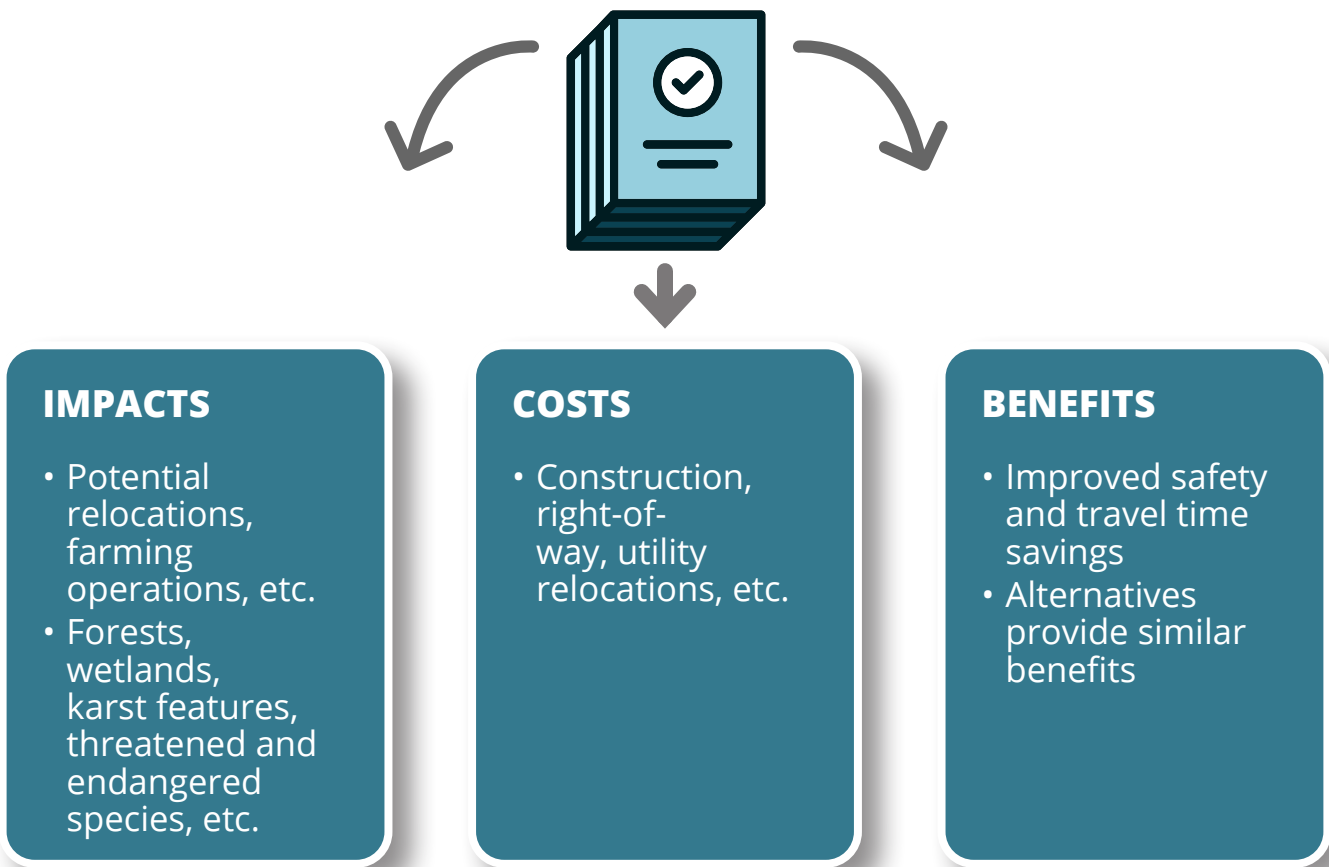
## Project Description & Typical Section

The project extends State Road 11 from the intersection of SR 337, SR 11, and Melview Road, across Buck Creek to the intersection of Watson Road and SR 135. The project includes improvement of existing roads (Melview Road SE and Watson Road SE), construction of new terrain state road, and construction of a bridge. The Typical Section figure below shows the approximate dimensions that are expected for the portion of State Road 11 constructed by this project.



# Alternative Analysis

The project team, working with INDOT, will complete the environmental study, project design, and acquisition of necessary right-of-way over a four-year timeframe. Preliminary engineering and environmental studies will proceed through early 2023. The preliminary engineering and environmental studies will provide insight into the cost, impact, and benefit of each alternative and inform selection of the preferred alternative.



## Draft Purpose and Need

### Need:

*Improve safety, mobility and accessibility in southern Harrison County.*

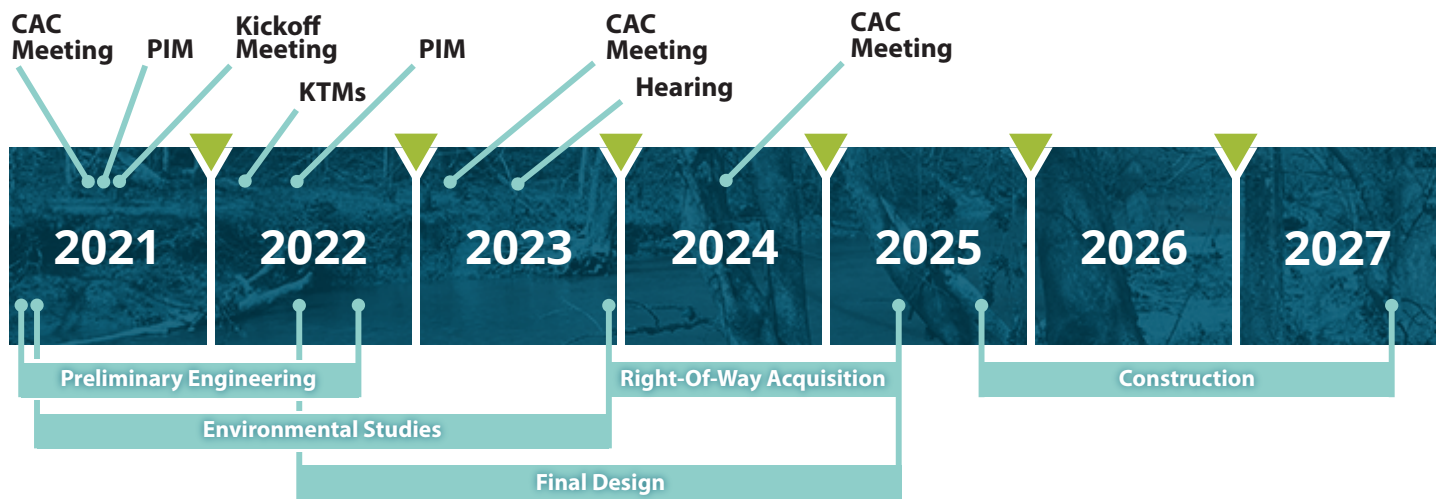
- Hilly, narrow, and often winding roadways with multiple 90-degree turns and poor sightlines are a safety concern and extend travel times
- There are only three crossings of Buck Creek in southern Harrison County

### Purpose:

*Provide an improved east to west transportation link in southern Harrison County that meets current INDOT standards for rural state highways and improves access:*

- to and from Corydon (north)
  - to and from Brandenburg (south)
  - to and from South Central schools, South Harrison Park, and other local destinations
- .....

# Project Timeline



# Engagement


Two-way communication with the public, stakeholders, and resource agencies is a critical component of the environmental study process. Stay engaged with the process by filling out the comment sheet or contacting the project team directly. To receive regular project updates, sign up for email alerts at the sign in sheet or on the project website. Contact information for project representatives is provided below.

## Contact Information

A comment form is included as a separate sheet in this handout. Share your knowledge of potential concerns by filling it out and dropping in the comment box.


Completed forms can also be mailed to **6200 Vogel Road, Evansville, IN 47715.**

You are welcome to email comments to **dgoffinet@lochgroup.com.**



**www.sr11extension.com**


.....



**Project team:**  
dgoffinet@lochgroup.com

**INDOT Seymour District:**  
secommunications@indot.IN.gov

.....



**Project team:**  
812-893-0642

**INDOT Seymour District:**  
855-INDOT4U (463-6848)

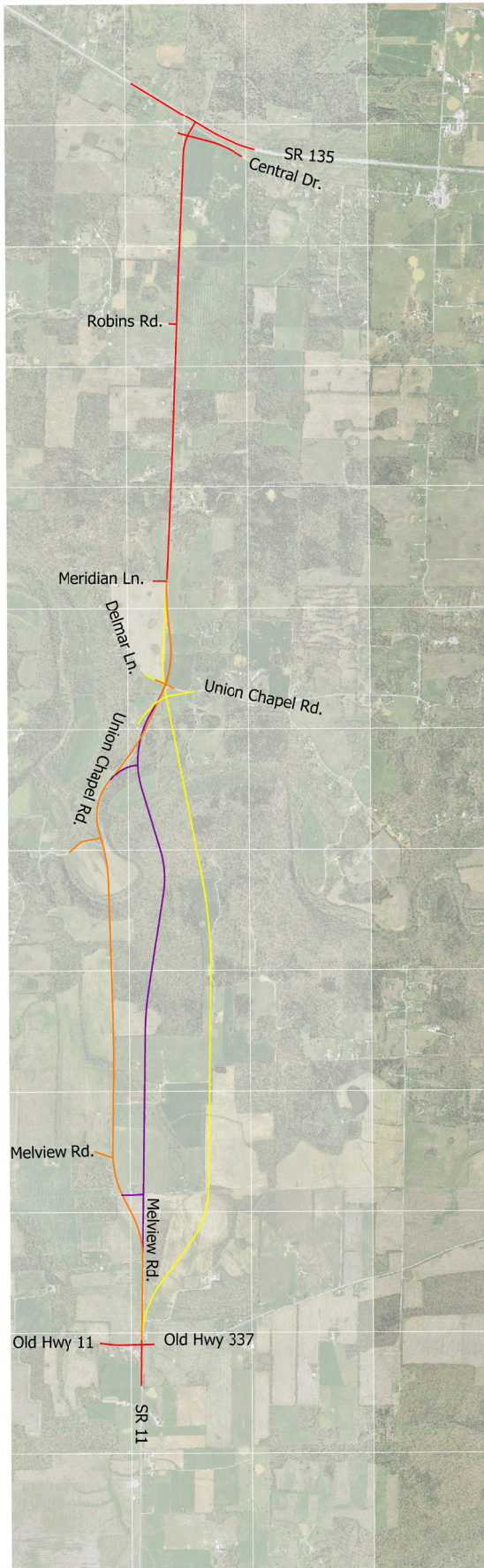
# Project Area Map

Plot: 6/16/2022 9:21:14 AM

L:\WORK\2020\9960-00\Draw\Modest\Exhibit SR 11 Project.rvt.dgn

## LEGEND

- All Alternatives Centerline
- Alternative 1 Centerline
- Alternative 2 Centerline
- Alternative 3 Centerline



SR 11 Extension New Roadway Construction Project  
Alternative Exhibit

SCALE: 1" = 1000'  
0 500' 1000'

