



eve investments

Medical Nutrition Investment Company

Investment Focus

Eve's vision is to be a leading Australia Investment company in the rapidly growing Global Medical Nutrition sector.



Investing in businesses in the early growth phase with the aim to support their expansion programs



Identifying products that have a unique medicinal properties and a global reach/application.



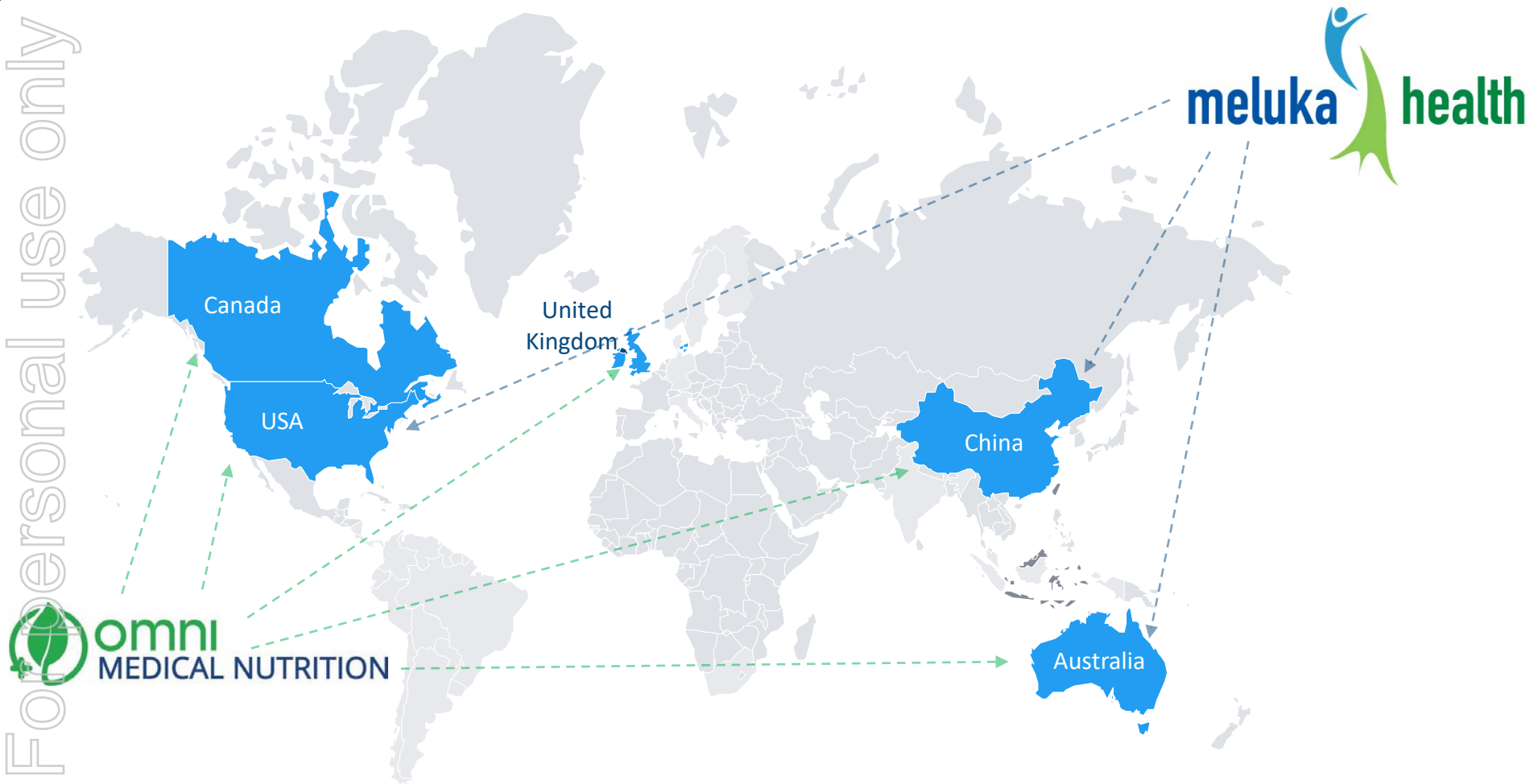
Preference for natural organic products that have demonstrated medicinal benefits.

Global medical nutrition market is estimated at US\$37.6 billion in 2017 and is projected to reach US\$52.3 billion by 2022 at a CAGR of 6.8% between the two years



Global Focus – Current Investments

For personal use only



Investments – Current

For personal use only



eve investments



Potential new
acquisitions

50%



40%



eve investments

Meluka Health – Business Structure



Option to Acquire



US Distribution business.



2,100 acres of organic tea tree plantation, including approx 900 acres of old growth melaleuca native plantation.

100%



Organic Medicinal Honey Producer. Developing unique product range

100%



TGA licensed contract manufacturer. Currently manufactures Meluka Honey.



eve investments

Meluka Honey – Current Update



- ✓ Established organic honey production
 - Hives installed on old growth plantation to produce medicinal honey.
 - Targeted production of 100 tons per year within 1 year.
- ✓ Organic honey supply from the Bungawalbyn Valley Basin has been secured (Bee Services Australia) for additional supply requirements.
- ✓ Supply initially to US wholesalers via distribution agreement with NAP.
- ✓ First Direct to consumer products developed:
 - Hemp Seed Honey
 - Organic Australian Native Raw Honey
 - Australian Meluka Honey (active with a medicinal factor)
 - Hon-E-Vite Serum for topical application



Meluka Honey – Initial Product Range

For personal use only



Meluka Honey – Next 12 Months



- ☐ Launch of Meluka Honey e-commerce website with initial product offering.
- ☐ Direct to Consumer marketing campaign commences in the US.
- ☐ Completion of Bee Health research by Southern Cross University for development of a Bee Tonic
- ☐ Secure exclusive Medicinal Cannabis supply for use in the development of Cannabis Honey product.
- ☐ Commence marketing and distribution of Meluka Honey products into China.
- ☐ Branding, production and market launch of Bee Health Tonic.
- ☐ Commence production and branding of Cannabis Honey product.
- ☐ Increase hive numbers to maximise production capacity at old growth Melaleuca plantation.
- ☐ Expand honey manufacturing capacity at existing TGA approved manufacturing facility.



EcoBotanicals – Current Update



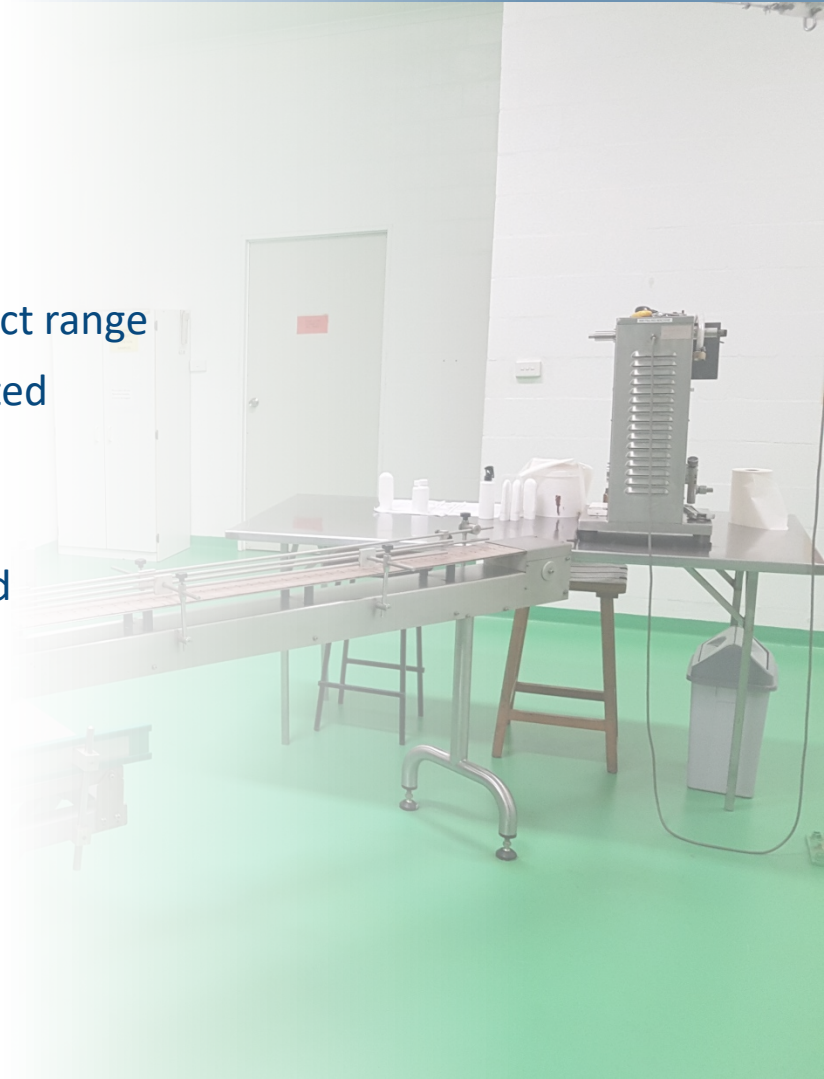
- ✓ Contract manufacturing of organic oil based products for established client base
- ✓ Expanding manufacturing capability for Meluka Honey products.
- ✓ TGA licensed and with requisite organic accreditations.
- ✓ Securing Kosher accreditation for Meluka Honey products for segments of the US market.
- ✓ Identifying key product formulations within its capability to cater for Chinese market.



EcoBotanicals – Next 12 Months



- ☐ Manufacturing focus will centre on Meluka Health product range
- ☐ Expand capacity of Honey manufacturing to meet expected demand.
- ☐ Formulation of Medicinal Cannabis Honey
- ☐ Development of “own” range of natural products tailored specifically for the Chinese markets.
- ☐ Finalise distributor arrangements for Chinese markets.
- ☐ Maintain TGA license accreditation.



Omni Medical Nutrition - Current Update



- ✓ Distribution and Sales of Pre-meal drink for diabetes into China via agreement with Eagle Health (ASX: EHH) has commenced.
 - Eagle Health have invested \$3.1m and committed a further \$5.7m for factory, warehouse and exhibition centre upgrades including a high speed line for the production of Hutang 1 diabetes product using Omni's licensed technology.
- ✓ Finalised agreement with Dr Alan Barclay, a leading Australian Dietician for the development and marketing of a new low calorie diet product.
- ✓ R&D and Market development programs key to new product flow.



Omni Innovation Near Future (12 Months)



鷹君健康控股
EAGLE HEALTH HOLDINGS LIMITED

ASX:EHH

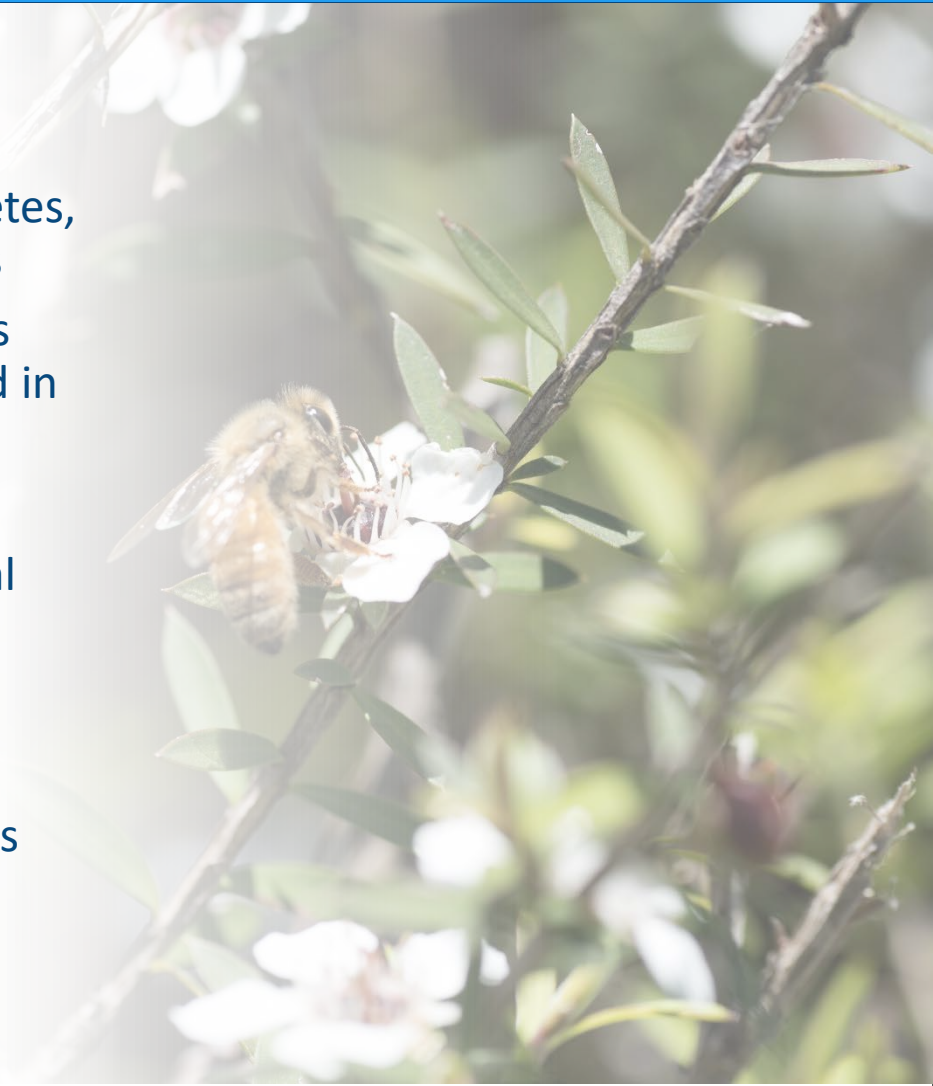


- ❑ China sales and revenue numbers for the Hutang 1 product manufactured and Distributed by Eagle Health to be released.
- ❑ Complete Formulation of new low calorie diet drink with Alan Barclay.
- ❑ Complete production and commence marketing of new low calorie drink into Australia.
- ❑ Secure new distribution agreement for establish pre-meal drink in the US.
- ❑ CFDA registration as 'Food For Special Medical Purposes' in China.
- ❑ Progress significant R&D project to advanced clinical trial stage (hunger management
- ❑ Complete market development of Blood Glucose Management product (IP captiatisation of Pre Meal Drink)



Summary

- For personal use only
- Medical Nutrition sector growing rapidly and competing with traditional pharmaceuticals.
 - Eve is well exposed to the sector via it's diabetes, weight loss and general wellness investments
 - Global appeal of Medical Nutritional products developed by the businesses Eve has invested in
 - Revenue generation ramping in its business investments
 - Eve aiming to be a leading Medical Nutritional investment company producing
 - High quality
 - Scientifically backed
 - Australian owned and produced wellness products



Thank you



Appendix 1 - Eve Investments Structure

ASX listed healthcare investment company (ASX Code: EVE)

Capital Structure	
Ordinary Shares:	2,198,870,299
Options/Rights	100,050,000 (various exercise prices)
Market Cap:	\$22m (6 March 2018)
Cash:	\$4.2m (6 March 2018)
Debt:	Nil

Board of Directors & Management

- George Cameron-Dow, Non-executive Chairman
- Bill Fry, Executive Director
- Alasdair Cooke, Non-executive Director
- Michael Pixley, Non-executive Director (TRT Rep)
- Ben Rohr, Investment Director
- Steven Jackson, Company Secretary

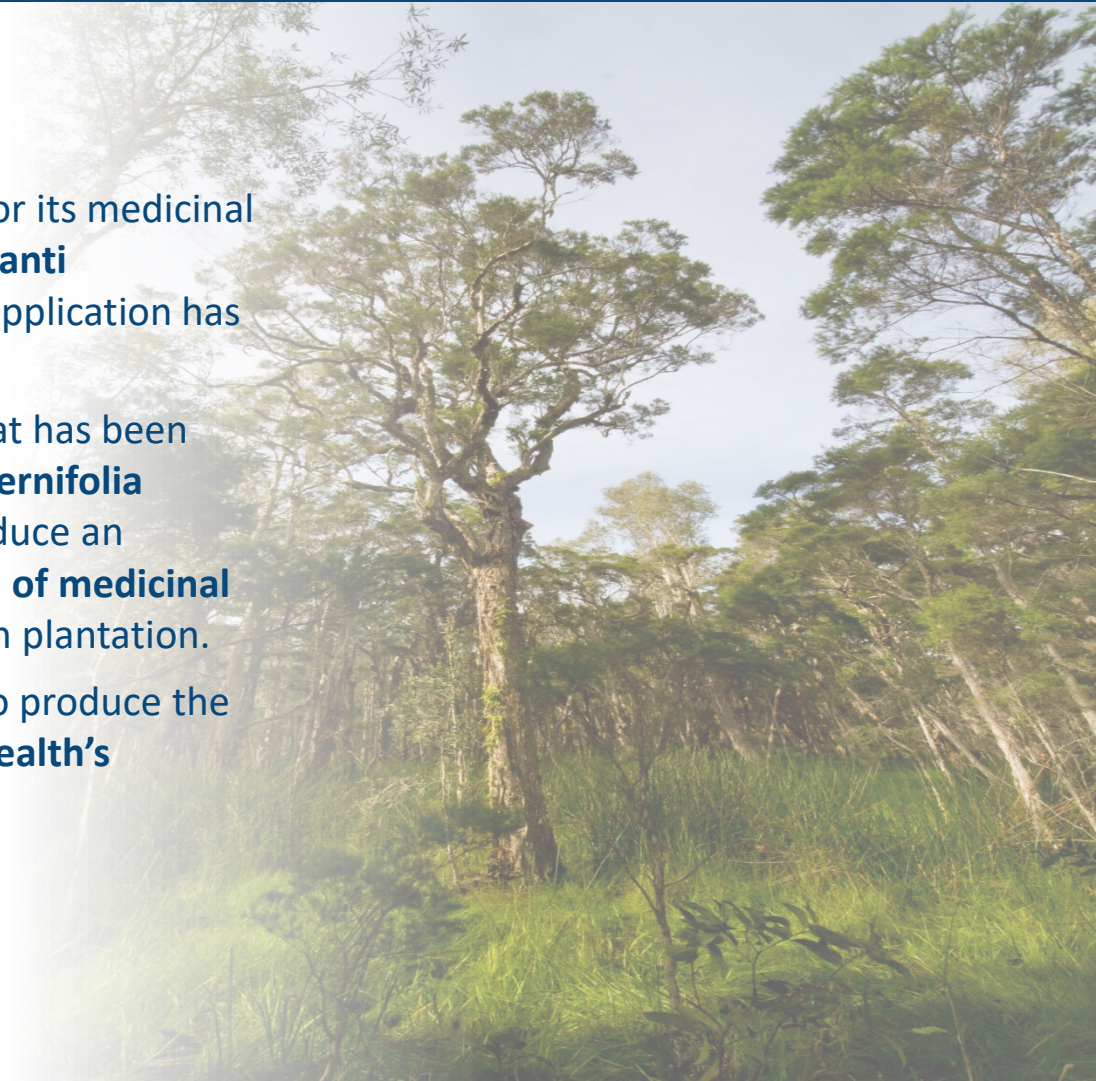
Key Shareholders	
Directors and Management	11%
TRT	6%
Surfit Capital Pty Ltd	4%
Illwela Pty Ltd	2%
Refresh Group	2%



Appendix 2 - Old Growth Tea Tree Plantation

For personal use only

- The **Melaleuca tea tree** is known globally for its medicinal properties, in particular it's **anti microbial, anti inflammatory power**. The most common application has been through the use of its oil.
- By harnessing an **old growth plantation** that has been identified as an **origin of the Melaleuca alternifolia species** of tea tree, Meluka Health can produce an aqueous extract that has a **far greater level of medicinal activity** than that of a farmed young growth plantation.
- The use of the old growth Melaleuca leaf to produce the medicinal extract is the **basis for Meluka Health's products**.



Appendix 3 - Interesting facts

Bee populations are declining globally with estimates suggesting a 44% decline in global bee populations caused by Bee health issues.

Around **a third of global food supply** comes from Bee pollination.

Australia produces between **20,000 and 30,000 tons** of honey per year with only 5,000 tons exported.

New Zealand produces similar quantities to Australia but **exports 50% of its production**.

Global import demand for honey is estimated at over **US\$2.1billion**.

New Zealand's **natural honey exports have grown dramatically** over the last 10 years and continue to grow rapidly especially into China which has doubled from Q1 to Q2 in 2017.

New Zealand's rapid growth in Bee Hive numbers has **caused Bee health issues** which is starting to impact production.

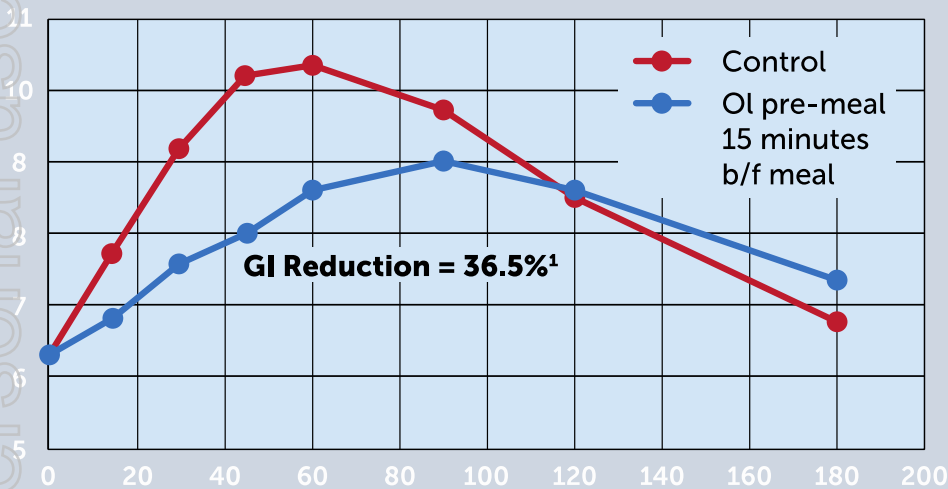
Manuka honey currently achieves prices that vary from **\$12/kg to \$148/kg** which make it a high margin product.

According to research by the CSIRO **Australia** has one of the **healthiest Bee populations** across the globe and given its land mass has ample room to grow.

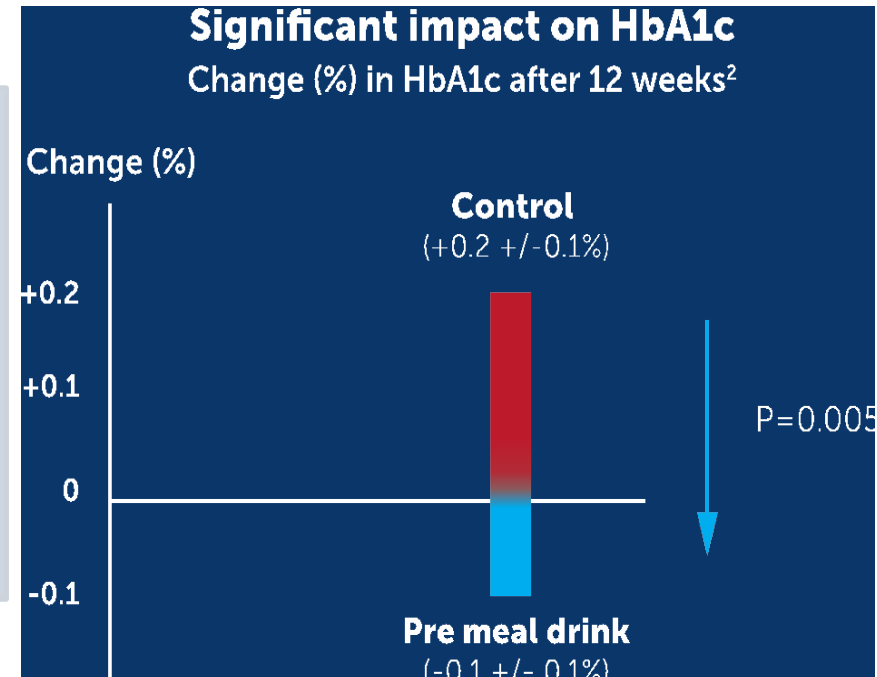


Appendix 4 - Pre-Meal Drink Validation

For personal use only



Acute Response of blood glucose to pre-meal drink

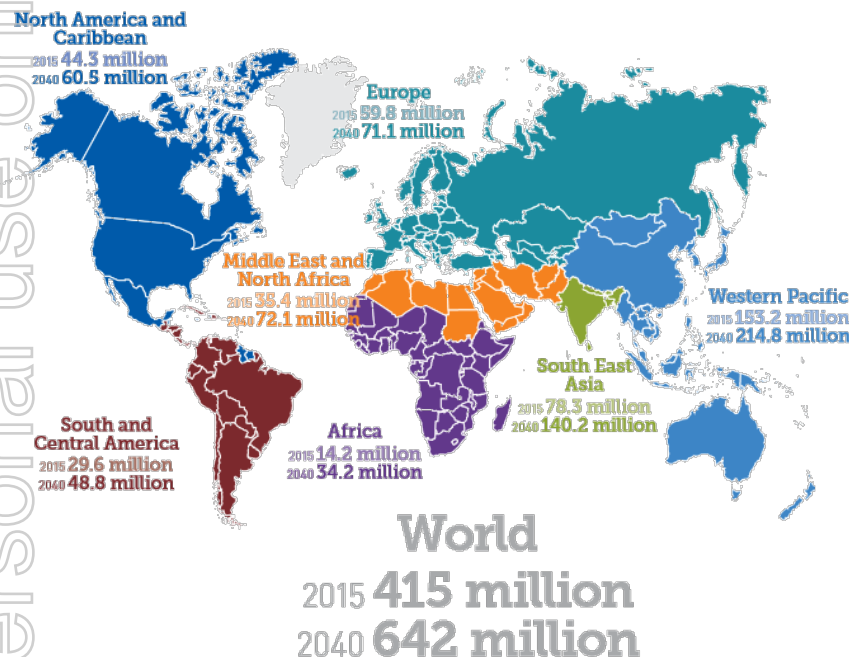


Long term impact on HbA1c to pre-meal drink

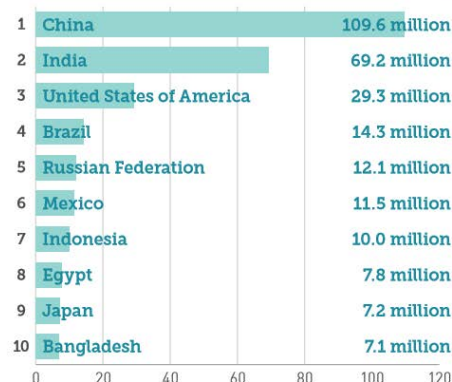


Appendix 5 – Global Incidence of Diabetes

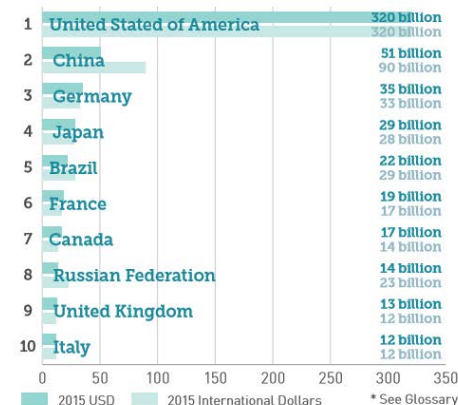
Estimated number of people with diabetes worldwide and per region in 2015 and 2040 (20-79 years)



Top ten countries/territories for number of adults with diabetes



Top ten countries/territories for diabetes-related health expenditure (R=2*)



Source: IDF Diabetes Atlas Seventh Edition 2015



Appendix 6 - Disclaimer

For personal use only

- The information contained in this presentation is not financial product advice. The presentation is for information purposes and is of a general and summary nature only. It does not constitute an offer. EVE Investments Limited (EVE) gives no warranties in relation to the statements and information in this presentation. Investors should seek appropriate advice on their own objectives, financial situation and needs.
- This presentation contains certain statements which may constitute “forward-looking statements”. Such statements are only predictions and are subject to inherent risks and uncertainties which could cause actual values, performance or achievements to differ materially from those expressed, implied or projected in any forward looking statements.
- EVE disclaims any intent or obligation to update publicly any forward-looking statements, whether as a result of new information, future events or results or otherwise. Investors are cautioned that forward-looking statements are not guarantees of future performance and investors are cautioned not to put undue reliance on forward-looking statements due to the inherent uncertainty therein.
- This presentation does not constitute or form any part of any offer or invitation to sell or issue, or any solicitation of any offer to purchase or subscribe for, any securities in the Company nor shall it or any part of it, or the fact of its distribution, form the basis of, or be relied on in connection with, any contract or commitment or investment decision relating to any securities in the Company. Any decision regarding any proposed subscription for securities in the Company must be made solely on the basis of information on the Company that is publicly available.

