

Nel PreTech Corporation

Seeing is Better Than Believing

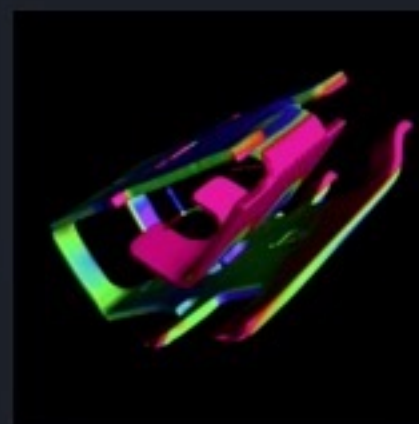


Believability in the data is always a factor in the decision-making process for engineers, quality and manufacturing professionals alike. The newest 3D technologies provide a clear visual depiction of the data. This helps build the confidence needed to make quick and accurate decisions.

This is why we say, "**Seeing is Better Than Believing**". We are providing sight to precise measurements and material performance confirmation.

NPC offers dimensional inspection on most first article manufactured parts.

We are an A2LA accredited lab offering industrial CT, CMM, VMS, and blue light scanning.



Post Measurement Services:

- dimensional reports
- capability studies
- assembly defect
- wall thickness analysis
- material porosity evaluation
- volume study
- part-to-part comparison
- part-to-CAD comparison
- 3D modeling/reverse engineering
- FEA analysis



nelpretech.com



708-429-4887

First Article Inspection by NPC

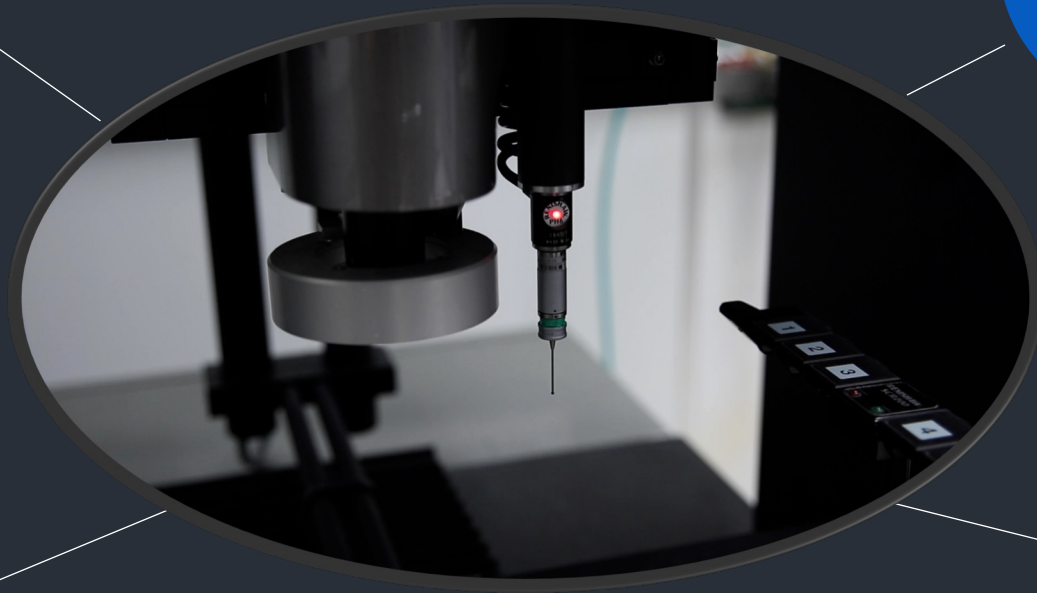
Ensure First
Manufactured
Parts Are Up
to Specific
Standards

Establish a
Baseline For All
Subsequent
Testing

Evaluate Actual
Dimensions of Each
Measurement &
Check Against
Drawings

Reduce
Manufacturing
Delays

Raise Level of
Overall
Quality Control



nelpretech.com



Color Map Analysis by NPC

Seeing is Better Than Believing

Free Viewer
Software for
End-User
Analysis Scan

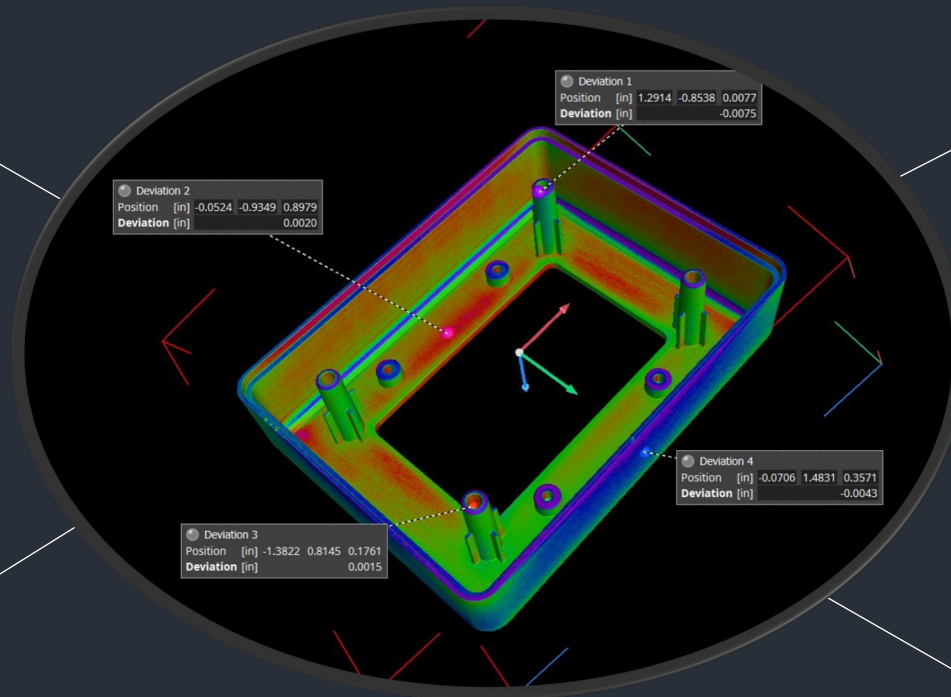
Compare Scans
to Nominal
CAD Model

Current
Part-to-Part
Comparison

Current
Part-to-Historical-Part
Comparison

2-Color
In/Out of
Tolerance
Color Map

Variable
Color Map

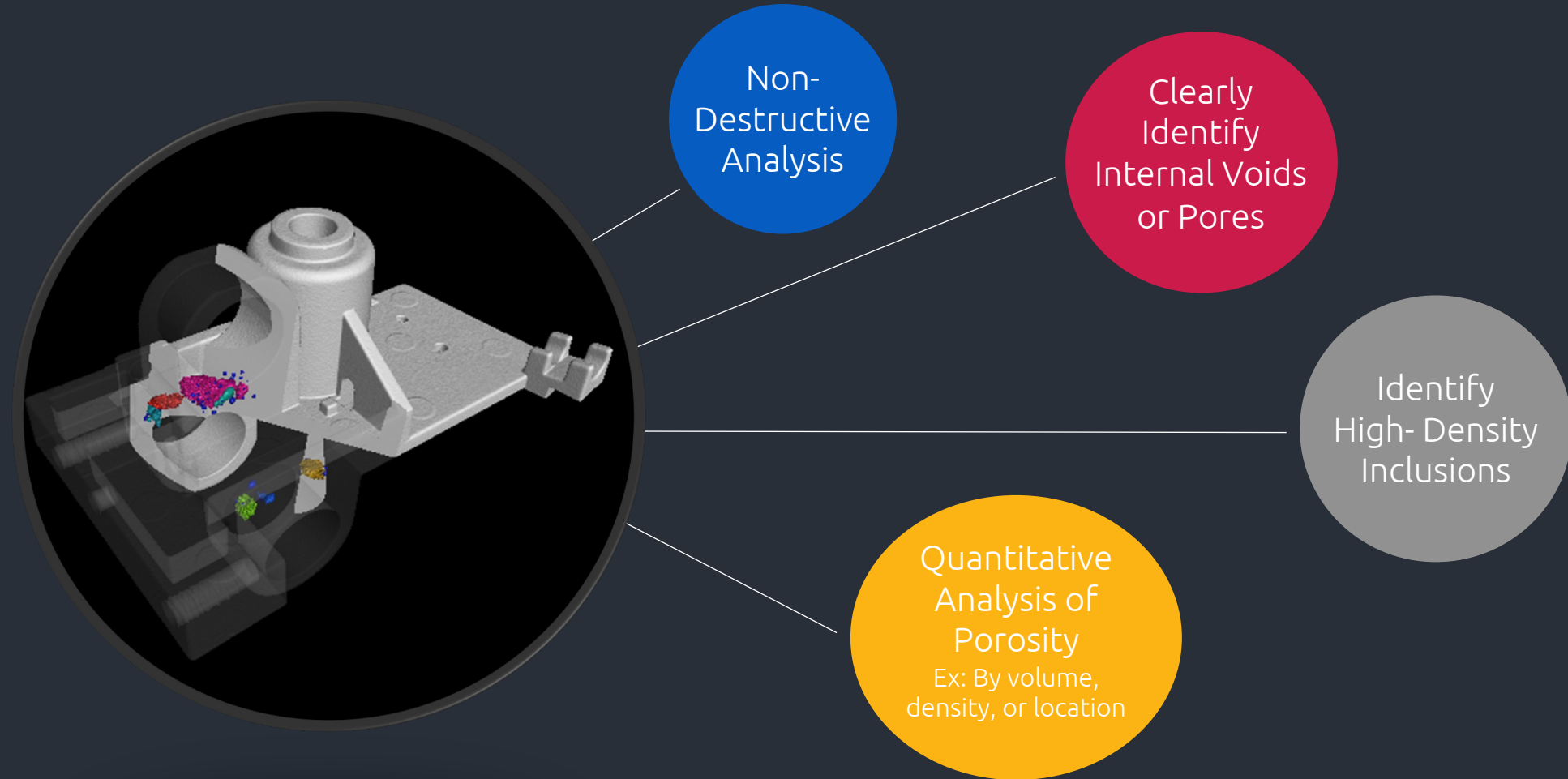


nelpretech.com



CT Scanning by NPC: Porosity Analysis

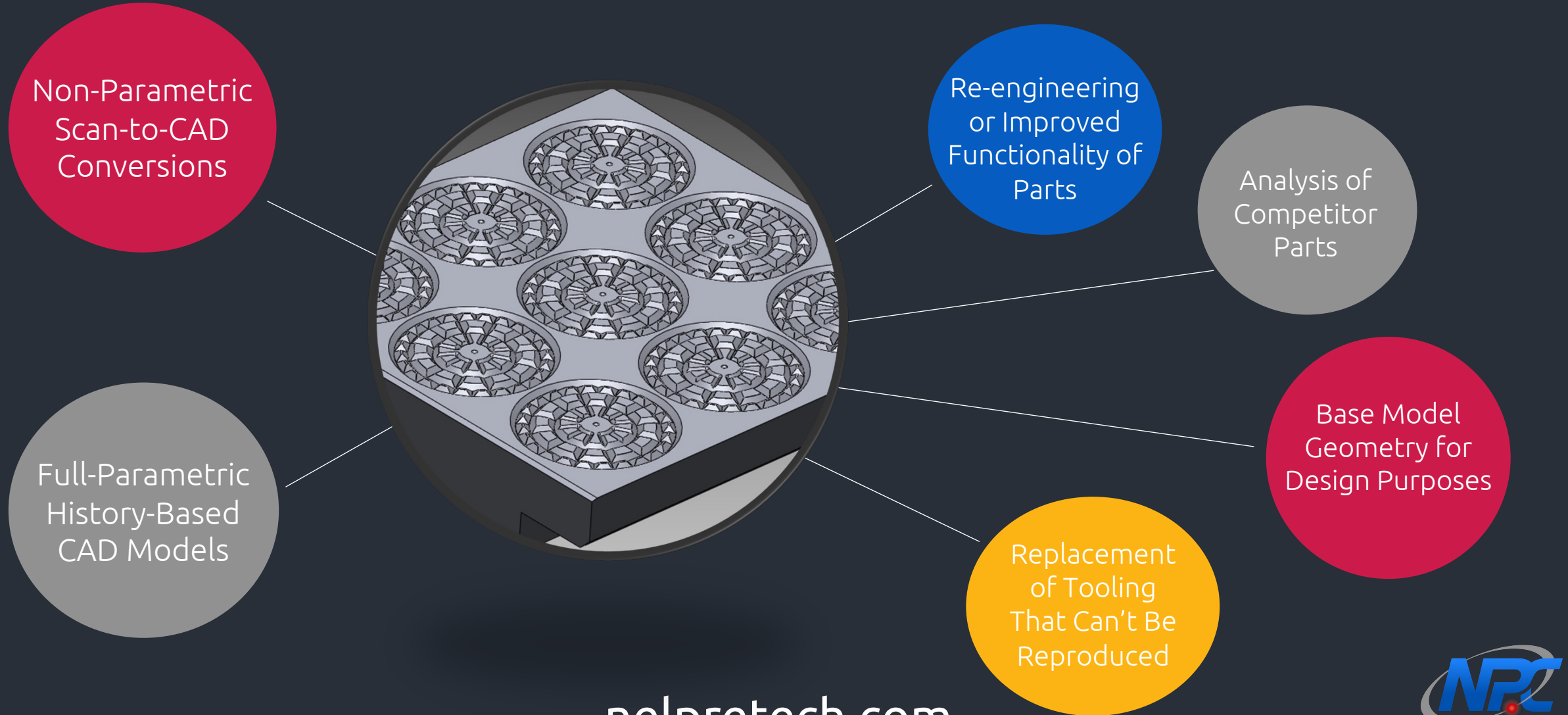
Seeing is Better Than Believing



nelpretech.com



Reverse Engineering by NPC



nelpretech.com

