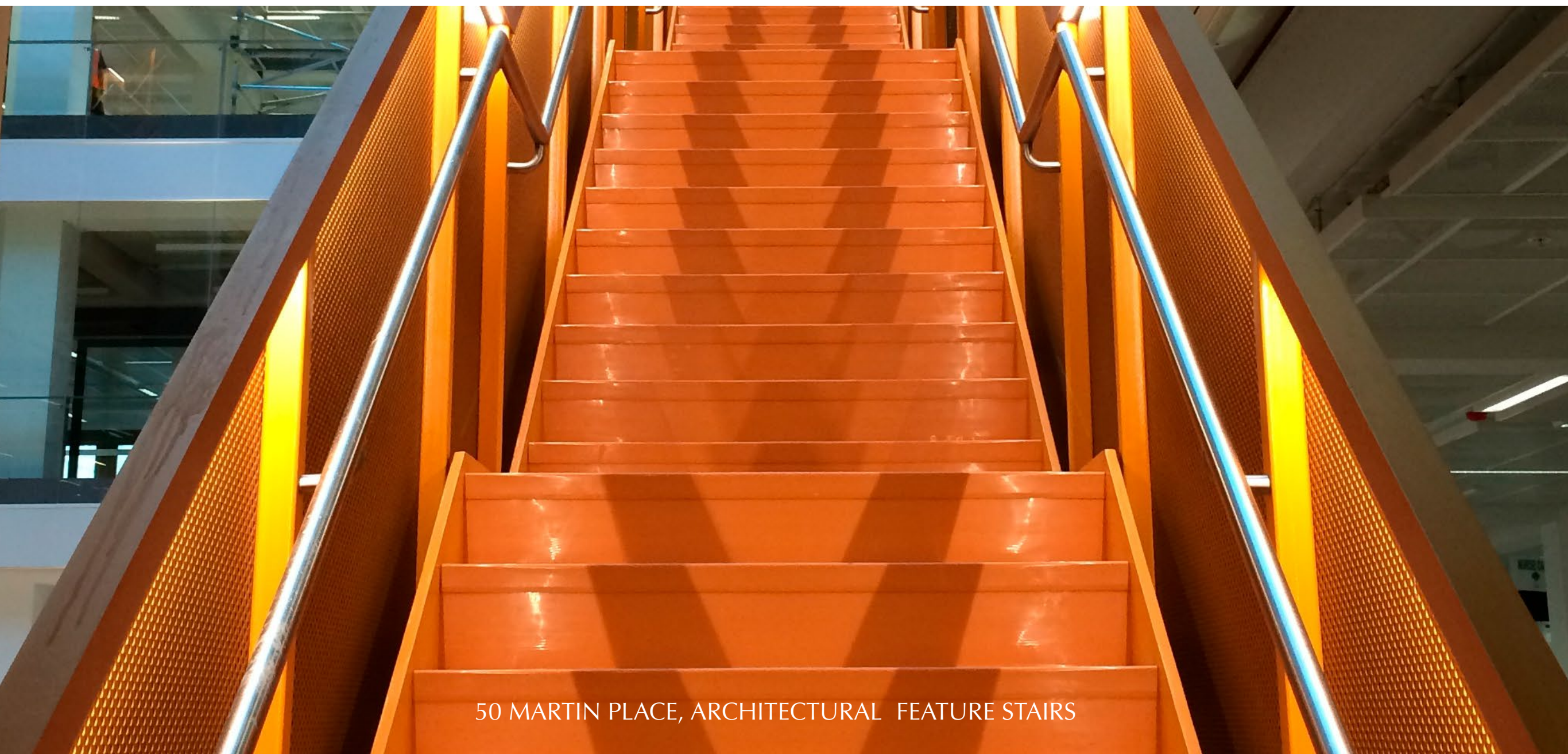




CAPABILITY STATEMENT: PROJECTS



50 MARTIN PLACE, ARCHITECTURAL FEATURE STAIRS



CAPABILITIES

- [Specialist structural steel](#)
- [Architectural steel](#)
- [Miscellaneous metalwork](#)
- [Infrastructure: Rail and Metro](#)
- [Infrastructure: Health and Defence](#)
- Glass (balustrades and architectural features)
- Cladding
- Design and drafting (CAD detailing, measured drawings, 3-D BIM modeling)
- Metal fabrication
- Project management
- Site installation
- Bespoke trailer manufacture and assembly

Icon Metal are problem solvers. We specialise in the difficult, idiosyncratic jobs that other subcontractors run away from. We run towards the challenge, and deliver.

For more on our capabilities see our [ICN Gateway profile](#).

RAIL & METRO

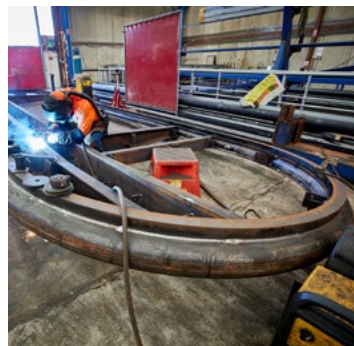
PARRAMATTA LIGHT RAIL

2021-ongoing

CLIENT: NSW Government / Laing O'Rourke

VALUE: \$14.6M

BRIEF: Fabrication of light rail stops for 16 stations connecting Westmead to Carlingford via Parramatta CBD and Camellia with a two-way track spanning 12 kilometres. Includes steel canopies, balustrading, handrails and cladding.

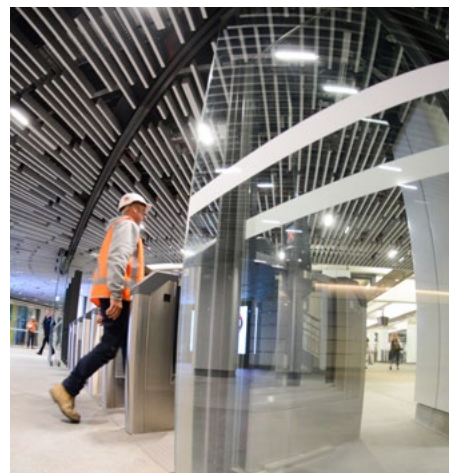


SYSTEMS CONNECT

2021

UGL / CPB Contractors
\$4M

Fabrication and supply of 8 rail consists to transport materials, lifting equipment and elevated work platforms

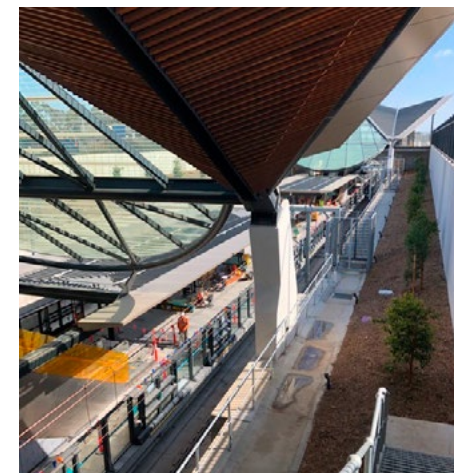


WYNYARD STATION

2016

Laing O'Rourke
\$2.2M

Balustrade and glass screen works



NORTHWEST RAPID TRANSIT

2019

CPB Contractors
\$9.6M

Structural and architectural steel and miscellaneous metalwork to 8 stations simultaneously

HEALTH & DEFENCE

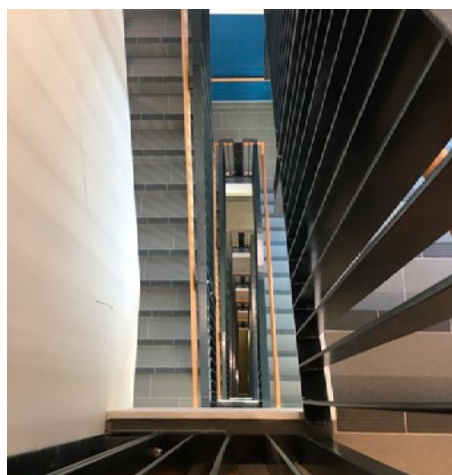
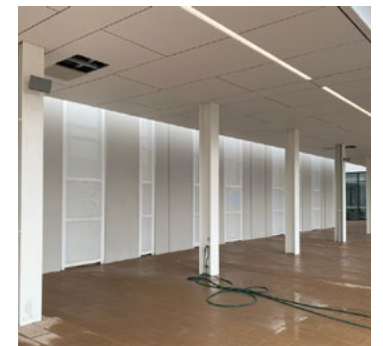
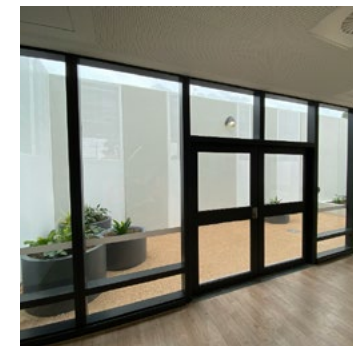
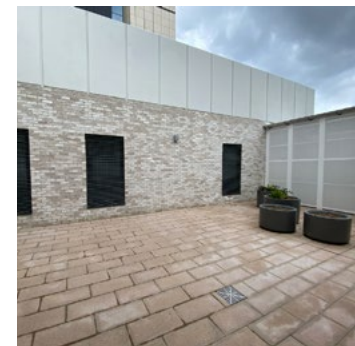
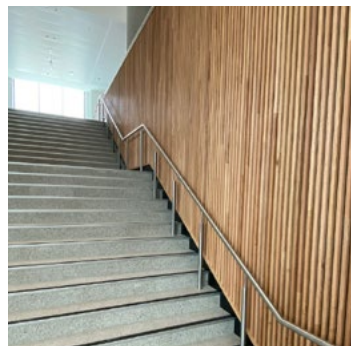


RANDWICK HOSPITAL REDEVELOPMENT 2022

CLIENT: LendLease

VALUE: \$2M

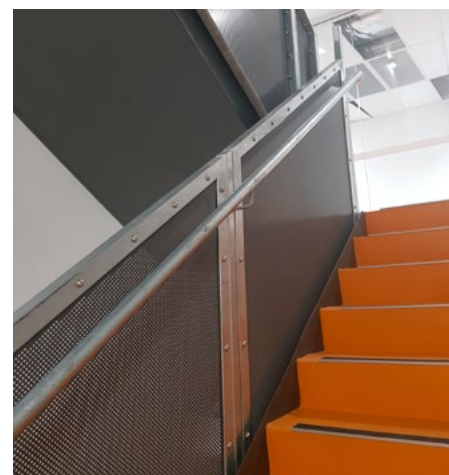
BRIEF: Miscellaneous metalwork package for the redevelopment of the Prince of Wales Hospital funded by the NSW Government for Health including design, procurement, supply, delivery, installation and certification of all metalwork.



ST GEORGE HOSPITAL

2017
Multiplex
\$1.5M

Atrium and feature stair glass balustrade, picketed stair balustrades with integrated timber handrails



WESTMEAD HOSPITAL

2016
Multiplex
\$1.5M

Perforated aluminium and galvanised steel fire stairs

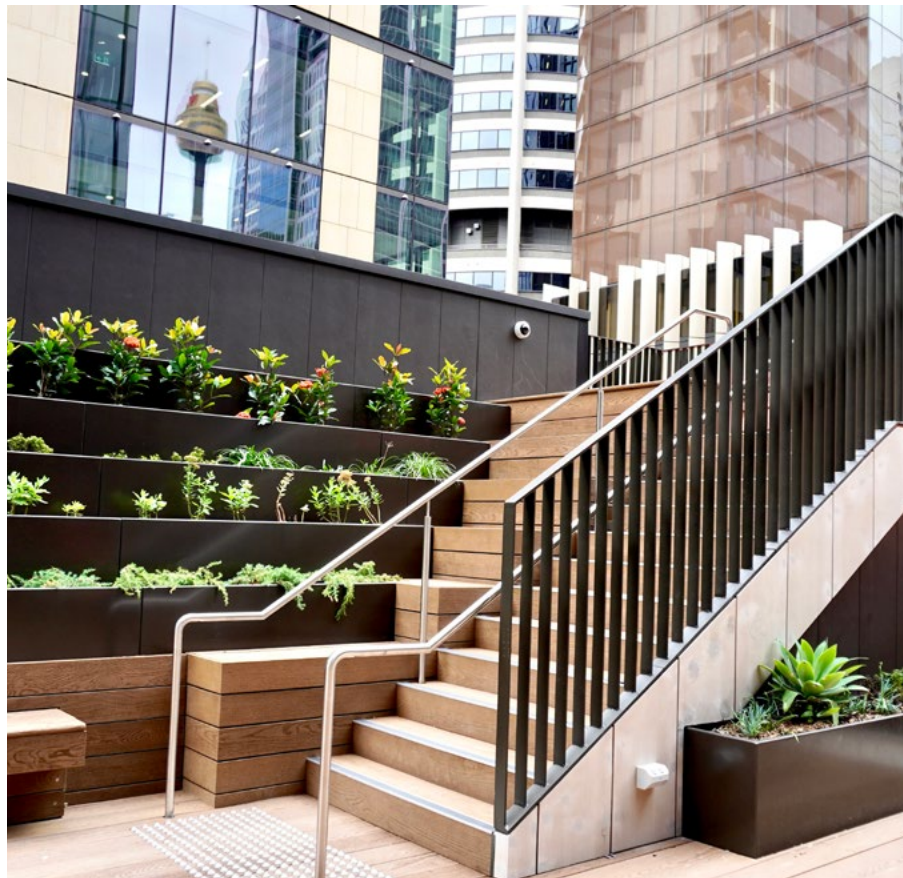


DEFENCE: MOOREBANK

2015
Laing O'Rourke
\$4.4M

Balustrading, military training equipment, vehicle maintenance trenches and security partitions

MISCELLANEOUS METALWORK



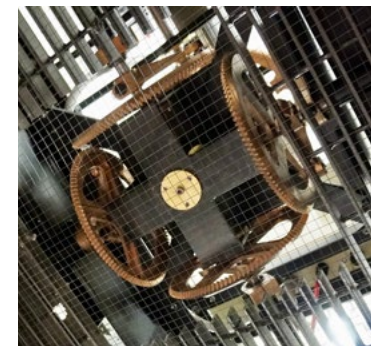
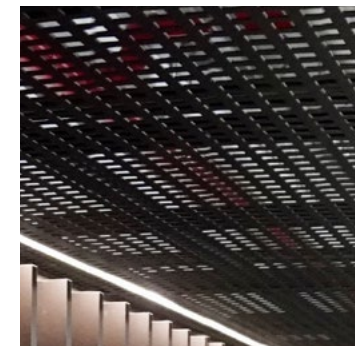
WYNYARD PLACE

2020-2021

CLIENT: Multiplex

VALUE: \$2M

BRIEF: Design, supply and installation of galvanised and stainless steel bike screens, handrails and balustrades, aesthetic and functional maintenance gantry in the clock tower, gold stainless steel feature wall installed in the car park.



ICC DARLING HARBOUR

2016

LendLease

\$3M

Supply and installation of screens, bollards, and balustrades in a variety of finishes



ROYAL RANDWICK RACECOURSE

2013

Multiplex

\$3.4M

21 level spiral stairs, balustrades, and parade barrier railing



ANZ STADIUM

1999

Multiplex

\$6M

Balustrading and cladding package for 90,000 capacity stadium

ARCHITECTURAL FEATURE STAIRS

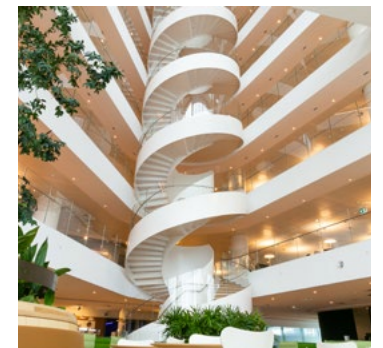
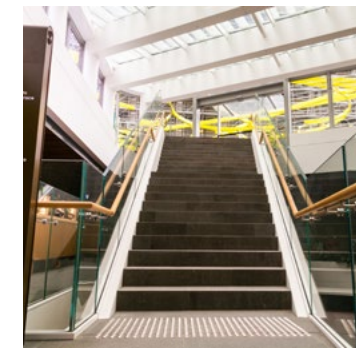
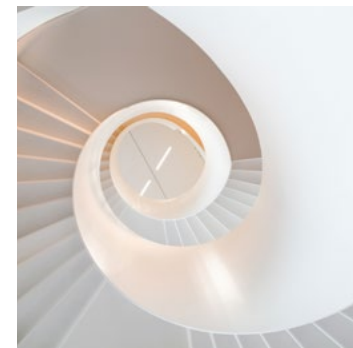
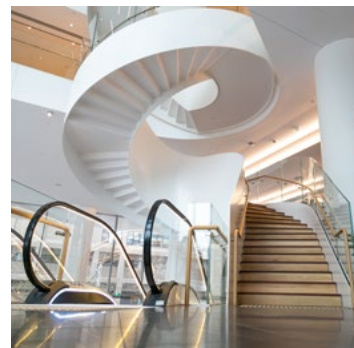


QUAY QUARTER TOWER 2019-2022

CLIENT: Multiplex

VALUE: \$21M

BRIEF: Design, fabrication and installation of 38 spiral feature stairs including curved glass balustrades, atrium stairs, structural steel reinforcement to lobby, installation of steel artwork canopy (see [Case Study #2](#)).



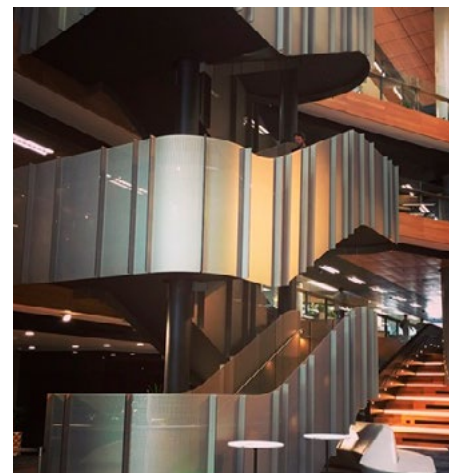
50 MARTIN PLACE

2014

Multiplex

\$3.6M

Fabrication and installation of atrium stairs in perforated aluminium, with a powder coated finish



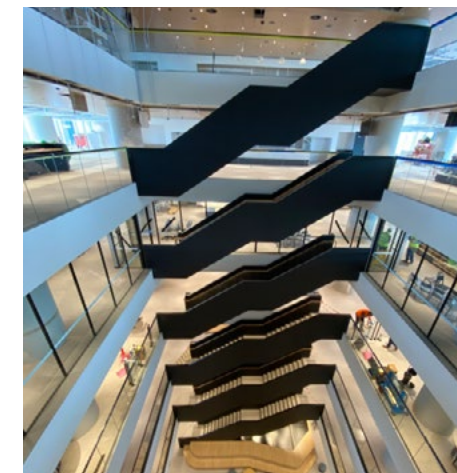
CBA DARLING SQUARE

2015-16

LendLease

\$4M

Fabrication and installation of perforated aluminium clad stairs, balustrading and stainless handrail



6&8 PARRAMATTA SQUARE

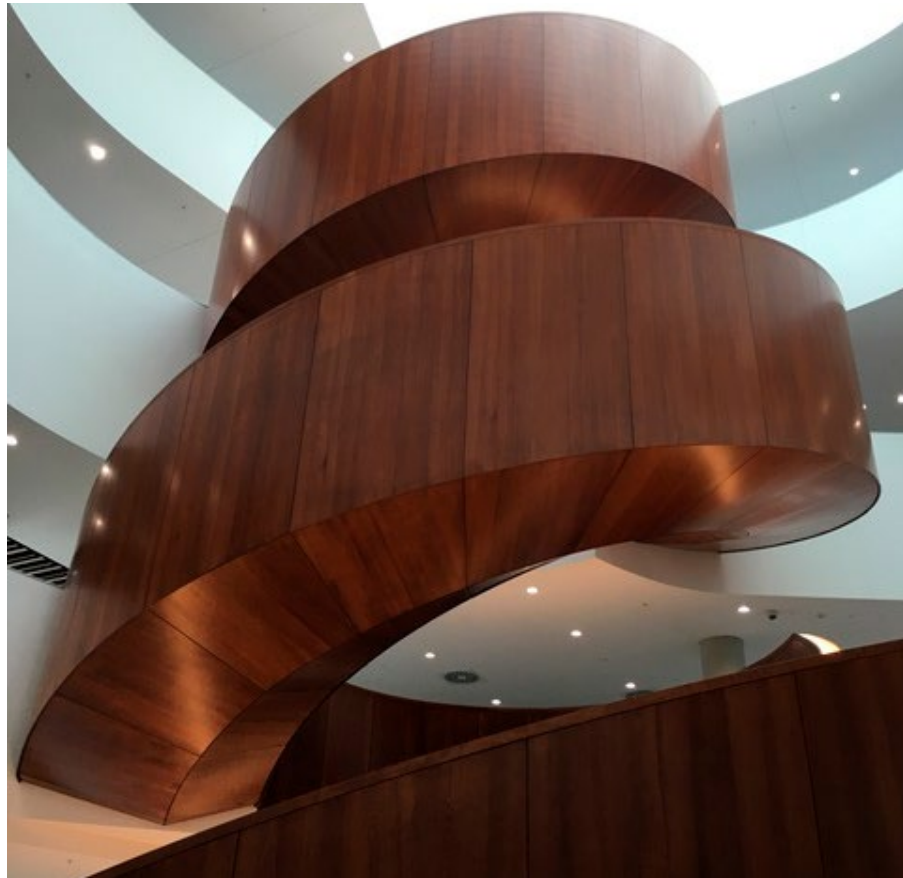
2021-22

Built

\$6M

Fabrication and installation of feature atrium stairs (see [Case Study #3](#))

ARCHITECTURAL FEATURE STAIRS

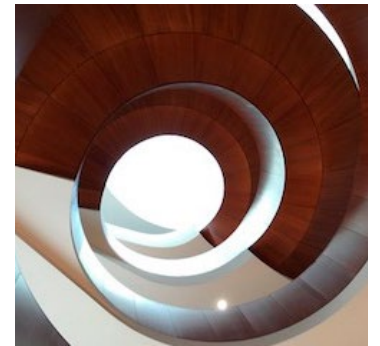
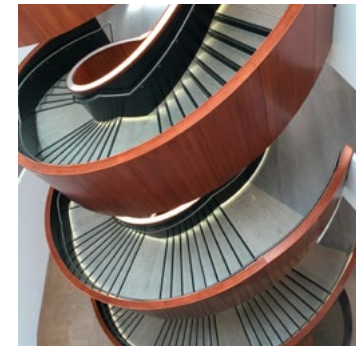
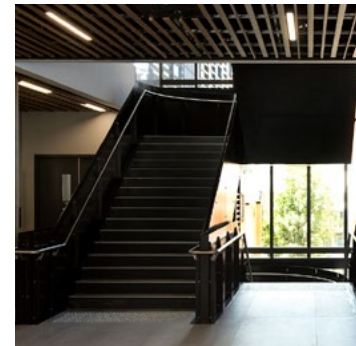


SYDNEY UNIVERSITY SCHOOL OF BUSINESS 2016

CLIENT: John Holland

VALUE: \$4M

BRIEF: Design, manufacture and installation of the central spiral stair feature, multiple connecting stairs, handrails and balustrades both within and external to the building.



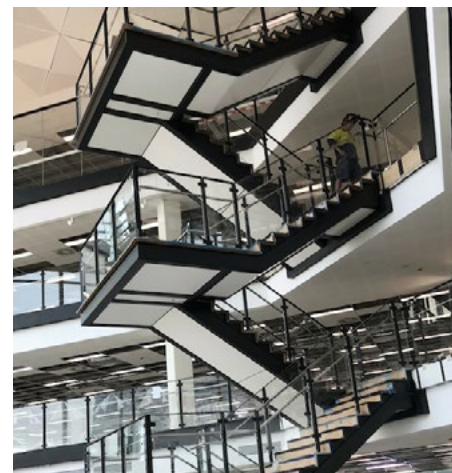
COCA-COLA AMTIL

2014

CBRE

\$2.1M

Structural steel stair with an unusually high specification paint finish to meet Coca-Cola's branding standards



388 GEORGE STREET

2019/20

Multiplex

\$2M

Supporting structural steel to three level steel stairs



8 CHIFLEY SQUARE

2014

Mirvac

\$2.8M

Fabrication and installation of the atrium stairs in powder coated aluminium cladding and curved glass finish

STRUCTURAL STEELWORK

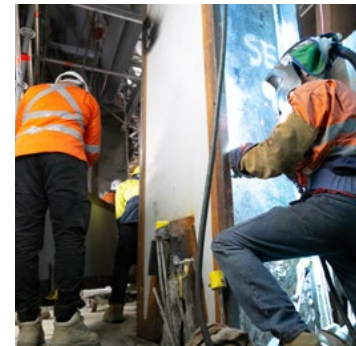


SYDNEY OPERA HOUSE CONCERT HALL 2019-2022

CLIENT: Taylor Construction

VALUE: \$6M

BRIEF: Increase the capacity of the concert stage from 8T to 38T by installing structural steel support to the existing World Heritage-listed structure. Installation of acoustic panels to improve performance of the concert hall (see [Case Study #1](#)).



SOH JOAN SUTHERLAND THEATRE GLASS LIFT

2017

Laing O'Rourke

\$2.8M

Installation of a glazed lift with architecturally exposed steel detailing over three floors. Precision rigging to ensure the heritage listed roof and glazed atrium were not damaged during lifting.



QUEENS SQUARE LAW COURTS

2012

Reed Construction

\$4.4M

Supply and installation of structural steel



CASE STUDY #1

SYDNEY OPERA HOUSE

CONCERT HALL REFURBISHMENT, STRUCTURAL STEELWORK
2019-2021

CLIENT: Taylor Construction

BRIEF: To increase the load-bearing capacity of the stage from 8 tonne to 38 tonne by reinforcing the main stage and choir stall area.

CHALLENGES:

- Difficult access
- Working in confined spaces
- Working safely at height
- High fire danger
- Preservation of world heritage-listed interiors

To fulfill the brief required the installation of 180 tonne of steel inside the cavity between the outer shell of the Opera House and the internal wall of the auditorium, and 25m above the auditorium in the Tech Zone from where the stage is suspended.

Without using a crane, up to 2 tonne of steel at a time was brought into the building in stages using pulleys to lift and trolleys to move the steel around inside the cavity.

In places the space inside the cavity was less than a metre wide.



CASE STUDY #2

QUAY QUARTER TOWER

ARCHITECTURAL SPIRAL STAIRS & STRUCTURAL STEELWORK,
2019-2022

CLIENT: Multiplex for AMP Capital

BRIEF: Fabrication and installation of 38 sets of spiral stairs in this 3XN-designed sustainable development for AMP Capital. Installation of structural steel reinforcing in the lobby area.

CHALLENGES:

- Complex geometrical engineering
- Difficult access rigging
- Preserving pristine white paint and glass finish

Our site installation and rigging teams had to employ some very creative techniques to get these huge sections of spiral stairs in place, each piece weighing 4 tonnes. The largest set of spiral stairs (left) covers 9 floors of commercial space and forms the architectural centrepiece of the building's main atrium, offering 180 degree views of Sydney Harbour.

▶ [Watch](#) our 11-minute documentary about the making of these stairs.



MISCELLANEOUS METALWORK

For the [miscellaneous metalwork package](#) Icon installed brass handrails with an antique patina to match the powder-coated aluminium balustrades, and 2,500 stainless steel slip-proof tactiles in the floor

CASE STUDY #3

6&8 PARRAMATTA SQ

ATRIUM STAIR, SKY BRIDGE, MISCELLANEOUS METALWORK
2020-2022

CLIENT: Built for Walker Corporation

BRIEF: Icon Metal was awarded a number of packages at this landmark development, including the atrium stairs, miscellaneous metalwork and a glass sky bridge spanning the main foyer of the building.

Comprising two interconnected towers, this 55-storey project designed by JPW Architects will be the largest corporate development in Australia, and aims to revitalise Parramatta's central business district. The project adheres to the highest environmental and sustainability standards.

The six sets of atrium feature stairs were delivered from concept to installation in just 3 months, on time and without incident. This uncommonly quick turnaround was made possible by the use of rigging techniques developed by our team, using pre-installed overhead cast-in brackets to support and lift the 6-tonne sections into place consecutively from top to bottom.

[Simple, elegant and efficient.](#)

In the foyer that connects Building 6 to Building 4 Parramatta Square, Icon Metal installed a [12 metre-long, glass-floored sky bridge](#). Supported by two 5.4 tonne beams that support 6 laminated glass floor panels, this bridge took 8 weeks and 5 full-time staff to fabricate at our Silverwater facility.



OUR FACILITIES

Icon Metal has a 1600m² fabrication facility in Silverwater, western Sydney that is fitted out with:

- 13 designated welding bays and a large open area to fabricate large or irregular-shaped commissions.
- 3 gantry cranes with a 6.5T lifting capacity.
- Welding/fabrication of materials including mild steel, stainless steel, aluminium, brass and copper.
- Machine area containing, gear head multi-angle drill, punch and cropping machine, linishing machine from stainless steel high-finishing.
- Mandrel pipe bender to take care of our handrail needs.
- Band saw for processing large structural members.
- CNC plasma-cutting machine for all our plate cutting requirements.
- 2,000m² of hard stand yard to handle semi-trailer deliveries and storage of finished goods.
- 2 forklifts with maximum lifting capacity of 6T.

STANDARDS

We are compliant to AS/NZS 5131:2016 that sets out minimum requirements for the construction of structural steelwork and our qualified welders comply to AS/NZ 1554.1 SP Standard.

COMPLIANCE



Icon Metal is committed to providing a healthy and safe work environment to its employees, and we hold ourselves to the highest possible standards.

Our Work Health and Safety Management System has been certified by the industry leaders, Compliance Australia Certification Services (CACS) to International Standard **ISO 45001:2018**, and our QA and Environmental Management Systems are certified to **ISO 9001** and **ISO 14001**, respectively. We are compliant to **AS/NZS 5131:2016** that sets out minimum requirements for the construction of structural steelwork.

Icon Metal is a [Gold Member](#) of the [ASI Environmental Sustainability Charter](#) (ESC), a commitment to sustainable business practices, taking environmental responsibility, and sharing our knowledge of sustainability with our clients and subcontractors. The ESC is recognised by the Green Building Council of Australia (GBCA), and allows projects that use our steel to achieve their 'Green Star' Mat-5 Steel point in the GBCA credit for Responsible Building Materials.

DONESAFE

Icon Metal uses the [Donesafe](#) Health, Safety and Environment digital platform that connects our compliance management system from workers in the field or factory to the boardroom.



Connect with us



www.iconmetal.com



Icon Metal Pty Ltd
81 Egerton Street, Silverwater NSW 2128
(02) 9637 2102
admin@iconmetal.com